



# MODBURY MESSENGER

## 'SEPTEM'

the seventh month in the 10-month Roman calendar before January & February were added

also good for organic carrots

# SEPTEMBER

illustration - Andy and Polly Rathbone

For the People of Modbury - Best Kept Large Village 2013 Volume 16, Issue No. 209 September 2016

## Modbury Fruit and Produce Show 2016

WOW, WOW, WOW what a show we have had this year, and I must say a big thank you to all the exhibitors who made it so, what an effort from you all. Firstly we had about 640 exhibits from all ages, as the hall gradually fills with exhibits it all starts to come together and look really great, it makes all the hard work worthwhile.

I have to congratulate all the children who entered their pieces of work. It all looked very good and the entries were excellent, more than I have seen in many years. I understand the children were encouraged to enter by the school, their entries were "draw and colour my five a day plate" for one section and "draw and colour a picture of a flower" for another. These

came to 110 exhibits from the school children and were hung all around the hall and they looked really great. The children were also encouraged to take part by the pre-school, Cubs, Brownies, Scouts and the PTA. It is hoped they all enjoyed the event and will carry on entering as they get older as they are the future of these country shows. The miniature gardens were really good, about eight in all. The entry for the pre-school was "make and decorate a crown" and the twelve entries looked really good with some designs with jewels and lovely coloured glitter all fit for a queen. It was good to see the children's cookery section have 16 entries. The new children's cookery prize was won by Nathaniel Gamblin for his chocolate cake. He really is a great little cook. Young Angus Hope entered five classes in the children's competitions, winning the cup for the 4-7year olds. The grand total for children's entries was 172 so well done to you all.

Once again Mr Jeff Booth won two cups for his garden produce, but like me he will not have a garden for growing his vegetables next year and between the two of us that will be a large amount of exhibits the show will not have next time. I was very disappointed with the Modbury Allotment Association receiving only two exhibits from all the allotment holders so perhaps we should change the format for the class.

Another disappointment this year was the floral art as we only had three petite and one church pew end.

I thought picking something that would go in the church i.e. pew end and harvest festival would have encouraged more to enter. We will have to consider cutting this section down to just two or three smaller arrangements in the classes, and see how that goes. Please let me have your ideas.

I would like to welcome our new president, Roger Pickles. Most of you who live in Modbury will know Roger, he and his wife Helen owned Pickles shop for many years before retiring a few years ago. Roger presented the cups to the prize winners and as a gesture for his taking over as president he would like to offer the children free entry for next year's show.

**Continued on p. 7**



Nathaniel receiving his prize for his winning cake

# THE PICKWICK INN

WWW.PICKWICK-INN.CO.UK | 01548 810310 | INFO@PICKWICK-INN.CO.UK

ST ANNS CHAPEL, BIGBURY, NR KINGSBRIDGE, TQ7 4HQ



## • THE 3RD ANNUAL • SNAIL GRAND NATIONAL



FRIDAY 14TH OCTOBER 2016 @ 7:30PM

JOIN US FROM 7:30PM FOR OUR

### - 3RD ANNUAL - SNAIL GRAND NATIONAL

*Racing Snails will be provided, but please feel free to bring your finest racing snail to help you win the Snail Grand National Title for 2016!*

**SLOW AND STEADY WINS THE RACE**



## LOCAL DOMESTIC ELECTRICIAN

- ✓ Installations, Cookers, showers, fans, inside and outside lights
- ✓ Alterations / additions / sockets / rewiring / Earth bonding
- ✓ Consumer Units – no better price fitted
- ✓ No job too large or too small
- ✓ Honest and reliable service
- ✓ PAT (portable appliance testing) inc certificate

All work guaranteed/ certificated  
Fully insured / qualified & registered with NICEIC

- Call **Phil** for a free, no obligation quote or callout;

Tel: 01548 859041

Mob: 07769 840012

email: [lightworkselectrics@gmail.com](mailto:lightworkselectrics@gmail.com)



Tel- 01364 72418 Mobile- 07710453118

[www.srplumbingheating.co.uk](http://www.srplumbingheating.co.uk)

- LPG & Natural Gas
- Oil
- Plumbing
- Heating
- Boiler Service and Repair
- Bathroom Installations
- Underfloor Heating
- Domestic Electrical Installer
- All Work Guaranteed
- Modbury Based Engineer



## Parish Council Report

## District Council Report

Over 120 people attended a public meeting held in the Memorial Hall to discuss the Joint Local Plan. The meeting was very constructive and a majority of the people favoured small pockets of development rather than a major extension of R A 1, the development currently being built. Mr Gary Streeter MP chaired the meeting with District Councillor Lindsey Ward explaining the procedures which needed to be followed by the Modbury Parish Council in our comprehensive response to South Hams District Council. Mr Gary Streeter has pledged support to make sure Modbury residents get a fair deal. The draft response was discussed at length at the August Parish Council meeting and with a few small adjustments was agreed by all and has been sent to South Hams District Council. It is copied in full on pages 10 & 11 of this Messenger. Thanks to the Neighbourhood Planning Group for preparing the draft.

A two part planning application has been made by Bloor homes to change the employment building from two stories to one which was supported by the Council. It was not so straight forward with the play area which has been presented without prior consultation with the Council and we are now requesting further discussions with Bloor's designer.

**Keep Modbury Tidy:** We have had several complaints of overgrown hedges and banks and weeds on the roads and pavements. Due to reductions in their budgets, Devon County Council have stopped cutting a lot of the places they used to and have also stopped spraying weeds on the road and pavement verges. We are looking at training some councillors to carry out some limited work, but it is up to individual householders to keep their own borders tidy and cut back hedges where they can overhang a pavement or road. If DCC have to trim hedges for road or pedestrian safety reasons they can charge the householder.

South Hams District Council are responsible for litter clearance and have a new team and equipment in place so hopefully our pavements will be tidier, but they can't be everywhere at once so if you do notice a mess outside your property could you help by sweeping it up?

**Affordable Housing:** Now that Bloor Homes have started work on the Palm Cross Green site it won't be long until some of the affordable houses become available to rent or part own. If you are interested in one of these houses you will need to be registered with Devon Home Choice for rentals ([www.devonhomechoice.com](http://www.devonhomechoice.com)) or Help to Buy South West for shared ownership ([www.helptobuysw.org.uk](http://www.helptobuysw.org.uk)). For outright purchases Bloor will be establishing an on-site office when completions are closer.

### Champernowne Celebration Day!

The sun shone brightly at the recent celebration event to mark the end of the middle phase of the Champernowne play park improvement work. Residents young and old chatted with representatives from DCH, SHDC and the parish council including the Neighbourhood pPan reps. As well as enjoying squash, cakes and playing on the bouncy castle provided by DCH housing association, the event was an opportunity to talk through some ideas for play equipment - the next and final phase of the project. The final phase will be the most challenging to achieve. This challenge was recognised in the project planning working phase at a time so that residents could begin using the park as early as possible without having to achieve all aspirations. The park now boasts a bench, picnic table, planted beds and planter all designed by a resident and agreed by the project steering group with support from SHDC and DCH officers. There are chalk boards on the wall for drawing too. In short the park provides a space for play, relaxing, meeting friends old and new and enjoying another beautiful green corner of Modbury. The project itself has been a great example of teamworking between different organisations and residents being involved from the bottom up. It has been an absolute pleasure to be a part of it. All residents are very welcome to use the park but we ask that all users of the park are respectful to the work that is in progress, to the other users and to the residents who live close to the park itself. Have a look of the photographs of the park on page 15. Thank you.

### Recent public meeting regarding the Joint Local Plan:

I just want to say a very big well done and thank you to the residents of Modbury who attended the public meeting in July well organised by the parish council and chaired by our MP Gary Streeter. I thought that residents displayed a great deal of thought in their comments and in effect did the community proud! I will keep you updated.

### Can you help?

Just about to start work on the final outstanding action of the Erme Remind plan for raising awareness of dementia.... The production of an information booklet. If you are a resident and would like to make some suggestions so we can get this right please let me know, particularly if you have experience of dementia as a carer or someone who lives with a dementia.

I am running out of space for my report but have some interesting news regarding the leisure procurement for a new provider for the district leisure centres. More to follow next month.

**Bernard Taylor**

**Lindsay Ward**





Cookery Evening

Student Stir-Ups!

Thurs 8<sup>th</sup> Sept 6 - 8.30pm

Learn how to turn a £30 box of groceries into 14 healthy and tasty meals.

£50 per head. Booking essential

Call 01548 831432 for details.

# solereflexions

for mind, body & spirit



I am an Ingham Qualified, Fully Insured Reflexologist who can offer treatments at either my rural treatment room just outside **Modbury**, or within the comfort of your own home.

Gift Vouchers available Gift Vouchers available

Bridget Thomas, MAR

Tel: **Modbury 01548 831629**

Mob: **07973 506083**



ASSOCIATION OF REFLEXOLOGISTS



# HARDY PRINT

DO YOU HAVE A NEED FOR  
**HIGH QUALITY  
LOW COST PRINTING ?**  
THEN WE CAN HELP YOU

FLYERS, POSTERS, BROCHURES, BOOKLETS & MUCH MORE

HIGHLY COMPETITIVE COSTS,  
AMAZING TURNAROUND !

DESIGN SERVICE AVAILABLE

WE CAN ALSO OFFER, WEBSITE DEVELOPMENT,  
MAILING SERVICES, MARKETING CONSULTANCY,  
SEARCH ENGINE OPTIMISATION  
AND PUBLISHING SERVICES.

LET US KNOW WHAT YOU WANT TO DO

**CONTACT JON HARDY**

**07801 238859**

OR

[jon.hardy@btconnect.com](mailto:jon.hardy@btconnect.com)

LOCATED IN IVYBRIDGE  
FOR A VERY PERSONAL SERVICE

## MARGARET BALDWIN BALLET SCHOOL BEGINNERS BALLET CLASSES

Starting Friday

9th September

Modbury Memorial Hall

Babies Ballet 3-4 years

Beginners Ballet 5 years  
and upwards

For Details Contact

Margaret on

**01548 857522**

## hunt and russells property advisor

redecorate

refresh

redesign

renovate

eco advice

garden design

moving on or

staying put

Janey Hunt

0773 421 6809

[huntandrussells@gmail.com](mailto:huntandrussells@gmail.com)

ARE YOU PAYING TOO MUCH TAX ?  
ARE YOU GETTING VALUE FOR MONEY FROM  
ACCOUNTING SERVICES ?

For a free confidential review, and a service second to none  
contact :

MARTIN RANWELL, FCA

## ELLIOTT & PARTNERS

Chartered Accountants

Tuckers Brook House, Modbury, Devon PL21 0UT

Tel 01548 830452

e-mail: [ranwell@modbury2.eclipse.co.uk](mailto:ranwell@modbury2.eclipse.co.uk)

[www.elliottpartners.co.uk](http://www.elliottpartners.co.uk)

EXTENSIVE EXPERIENCE IN BOTH THE PROFESSION AND  
COMMERCIAL MANAGEMENT  
IRIS (iXBRL compliant) and Sage software  
PROPERTY MANAGEMENT SERVICES

- Bathroom and kitchen fitting
- Floor and wall tiling
- Leaking toilets/radiators/taps etc
- Radiator replacement and additions
- Shower pumps
- Links with local builder/electrician for larger installations if required

## Chapman & Sons Plumbing Service

Small jobs welcome  
Reasonable rates  
Free quotes

Telephone **07468 466380** now  
for a speedy and efficient service.

## Thank you Pickles!

We recently entertained family members who were visiting from New York. The two little girls, Brooke aged 9 years and Taylor aged 7 years enjoyed mooching around our wonderful Modbury shops. Having been away from home for 6 weeks, Taylor explained that she especially enjoyed children's crossword books, but had been unable to find any in the department stores as the family travelled around the UK. Pickles came to the rescue, it was great to see Taylor's face light up as she saw a choice of crossword books. Good old Pickles, thank you, you made that little girl's day!

Paula Jarrett



**St. Monica's**  
**Roman Catholic Church**  
 St Austin's Priory  
 01752 892606  
 Sundays 8.45 am Mass  
 Everyone Welcome



## Harvest at St George's

On Sunday 18th September the Harvest Festival will be celebrated at St George's. Fresh produce and especially tinned and packet food or other useful household products such as soap, bin liners and washing up liquid for the Salvation Army, the Shekinah Mission and Plymouth Woman's Refuge will be most gratefully received.

Please bring any donations to the church on the morning of Saturday 17th December or leave them in the back of the church earlier in the week.

Donations of flowers also welcome for decorating the church,

Thank you. **Helen Pickles 01752 881385**

**Save the date!**  
**St George's Church Puddings and Quiz**  
**evening will be on**  
**Saturday November 19<sup>th</sup>**  
**in the Memorial Hall.**  
**More details next month.**

**S**  
**t.**  
**G**  
**e**  
**o**  
**r**  
**g**  
**e**  
**'**  
**s**  
**C**  
**h**  
**u**  
**r**  
**c**  
**h**

**Family Harvest Supper**  
**Saturday 17<sup>th</sup> September**

**In St George's Church**  
**6.00pm**

**Children's quizzes**  
**(and for grown ups!)**

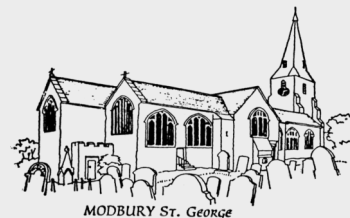
**Adults £5 Children £2.50**  
**pre-school free**

**Please buy your tickets in**  
**advance at Pickles from**  
**September 10<sup>th</sup>**

**Bring your own plate, bowl, glass,**  
**drink, knife, fork and spoon.**

**All proceeds will be given to the**  
**Shekinah mission**

**St George's,**  
**Modbury**  
**Services and**  
**Events**



## September

Thursday 1st	9.15am	Noah's Ark
Sunday 4th	9.30am	Holy Communion
	4.00pm	Confirmation group at the Vicarage
Thursday 9th	9.30am	Holy Communion
Sunday 11th	8.00am	Holy Communion
	9.30am	Family Service with the Rex's Picnic lunch
	6.00pm	Evensong
Wed 14th	9.00am	Staff Meeting
Thursday 15th	9.30am	Noah's Ark
	7.30 pm	PCC
Saturday 17th	6-00pm	Harvest Supper
Sunday 18th	9.30am	Harvest Communion with Sunday Club
Thursday 22nd	9.30am	No Holy Communion
Sunday 25th	8.00am	Holy Communion
	9.30am	Sunday Worship
	6.00pm	Living Room
Tuesday 27th	10.30 am	Open the book
Wed 28th	7.30pm	Team Council
Thursday 29th	9.30am	Holy Communion

## October

Sunday Oct 2nd 9.30am Holy Communion

**MODBURY FRIENDS OF ST LUKE'S**  
 invite you to a  
**PIG RACING NIGHT**

(Live Country & Western music too)

Please bring your own picnic but purchase your drinks from the licensed bar



In aid of  
**St Luke's**  
 Hospice Plymouth

**Tickets**  
**available**  
**now!**

**Saturday 15 October**  
 at Modbury Memorial Hall at 7.30pm

**Tickets £10.00 - to include the first drink**  
 (from committee members or Pickles)

**Dress code: rustic**

## Modbury Health Centre

### Flu Vaccination Clinics start 21st September

Book your appointment now if you have:

- Asthma
- COPD
- Heart disease
- Kidney disease
- Liver disease
- Diabetes

Book your appointment now if you are...

- Pregnant or
- over 65 years..

Tel: 01548 830666 or make an appointment  
at the health centre

## Modbury Information Centre

With the great improvement in the weather we have seen an increase in visitors and our new volunteers have coped admirably. Thank you.

Sales are good and the fun postcards are selling well, worth using these for thank you cards, I think. I hope you have seen the new cards of Hope Cove.

There are many individual walks of South Devon AONB that can be copied and laminated for a small charge and so easy to use. Come and have a browse of the file.

Don't forget those discount vouchers either.

Come and visit us in Modbury Court.



## Modbury Messenger Closing Date

The copy date for the October Modbury Messenger is 10th September. Please send all copy, except for paid advertisements by e-mail to: [messenger@modburypc.co.uk](mailto:messenger@modburypc.co.uk).

Commercial advertisements should be sent to the Parish Clerk at [parishclerk@modburypc.co.uk](mailto:parishclerk@modburypc.co.uk)

The Modbury Messenger is published by the Parish Council and is printed by Kingfisher Print, Totnes. The views expressed in the Messenger do not necessarily represent those of Modbury Parish Council.

## Contacting Your Local Police Community Support Officer

You have several ways of contacting your local PCSO, Warren Palmer, from the Kingsbridge Neighbourhood Policing Team

Telephone: 07703885625

Email - [warren.palmer2@devonandcornwall.pnn.police.uk](mailto:warren.palmer2@devonandcornwall.pnn.police.uk)

### MODBURY PARISH COUNCIL OFFICE.

2 Galpin Street, Modbury PL21 0QA

Tel: 01548 830222

[parishclerk@modburypc.co.uk](mailto:parishclerk@modburypc.co.uk)

**Hours of Business-** Mondays 2.00pm – 4.00pm

**Parish Surgery** 10 – 11 am every Saturday

**Planning Applications:** Notices of planning applications lodged with SHDC are displayed on the Parish Noticeboard outside the Post Office. Copies of plans relating to these applications can be inspected at the Parish Office during the above office hours.

**Contacting Parish Councillors:** Parish Councillors attend the Parish Office, on a rota basis, on Saturday mornings from 10.00 - 11.00am. Should you have any parish matter you would like to discuss come along to the Office or call in to the Office and speak to the Parish Clerk, Sacha Hager. Alternatively you can write a letter or speak at the public forum held at the beginning of each monthly meeting of the Parish Council, on the second Monday of each month at 7 pm in the Pavilion, QEII Recreation Ground.

## PERSONAL ANNOUNCEMENTS

(Births, Deaths, Marriages,  
Thanks etc)

£5 per insertion—Max. 50 words  
(Subject to available space)

*The Editorial Committee reserve the right to précis/abbreviate any copy submitted for inclusion in the Modbury Messenger.*

*The contents of the Modbury Messenger may not be reproduced in any form without the prior written permission of Modbury Parish Council.*

## MEMORIAL HALL PROJECT UPDATE—A Community Hall Fit for All

We are pleased to report that the project to refurbish the toilets & kitchen, install IT equipment and build an extension to the rear of the stage is on track. We have now obtained grants from the Big Lottery and the Garfield Weston Foundation which, together with the legacy we received last year and some generous donations from the Players, Pantomime, individuals and one user group, puts us to within £10,000 of our £61,000 target.

We do however need to close that gap if the project is to be completed successfully. We do understand that there have never been so many calls on your charitable giving but if all those who use the Hall during the year could help in a small way then we will get there.

Also look out for fund raising events and if any of the regular user groups would like to raise money on behalf of the project then we would be grateful.

The Memorial Hall has provided a meeting place for the community for over 60 years. With your help we can upgrade the facilities to make it fit for all for the next 60.

If you would like to help please contact the Treasurer, Phil Jolly, on 01548 831263, email: theseus.pmj@btinternet.com or at Silverhill, 3 Treveor Gardens, Modbury, PL21 0TE. Gift Aid forms are available for those lucky people who pay tax!

Thank you.

**Phil Jolly**

---

## Modbury Fruit and Produce Show (continued from p.1)

Mr P Gilbury was an exceptional winner in the open section winning a grand total of five cups and any number of first prize cards.

I would also like to thank all the other vice presidents for their financial gifts and class prizes. I would like to thank the ladies who kindly helped the committee on the Friday morning to prepare the hall and as stewards to the judges on show day and to the children who do all the running with the prize cards, Clem, Poppy, Nathaniel and Aurora.

Thank you to all those who made bids for items in the auction, this goes to the funds for the running of the show. By the time you add it all up it takes a fair amount of money to put the show on each year. I would also like to thank the shopkeepers who display the posters and the schedules for people to take.

We had a good report in the Gazette newspaper with some lovely photographs, if you would a photograph you can order from Greg Taylors web site.

Again thank you all for a lovely show see you all again next year, show date is Saturday 29<sup>th</sup> July 2017. If anyone has any suggestions for classes for next time please let any committee member know.

**Angela Peters, Show Secretary**



### Modbury Local History Society

We commence our next series of talks on 14th September, Robert Hesketh will be talking about Devon's Railway Heritage. Annual subscriptions will be due, the same as last year, £10.00 per person, £3.00 for each meeting for casual visitors. This first meeting will be held in the White Hart Assembly Room, starting at 7.30 pm.

Meetings in October and November will be held in a different venue - THE MEMORIAL HALL. Programmes are being prepared for the rest of the season.

**David Mitchell**

### IT'S FOR YOU – WHY NOT USE IT? MARS SPORTS AND COMMUNITY FACILITY

We now have a fully equipped community facility on the Recreation Ground – including a large multi-purpose Events Room for up to 60 people, catering facilities, sport changing rooms and showers, disabled facilities and access, plus extensive free parking.

- Extremely competitive hire rates
- Ideal for children's parties and private social events
- Choir/band practice
- Training and meeting events
- Keep Fit, Yoga, Pilates classes
- Art classes etc.

**Check availability/rates, book online or contact us at:**

**[www.marsport.org](http://www.marsport.org)**



## G H W Rosevear & Co

Chartered Secretaries and  
Incorporated Financial Accountants

We specialise in the following services:

Accountancy and Taxation  
Probate and Inheritance Tax (IHT)  
Company Secretarial Services  
Legal Support Services  
Property Management

We can also provide you with Book-keeping,  
Payroll Services and VAT Returns

### Office Hours

G H W Rosevear & Co  
3, Modbury Court, 32 Church Street  
Modbury, Ivybridge, Devon, PL21 0QR

9<sup>15</sup> a.m. - 6 p.m.  
Monday - Friday  
Weekends by appointment

Tel: 01548 831427  
Fax: 01548 830977  
Email: george@holbrookass.com  
www.accountantsouthdevon.co.uk

## BISTRO 35

35. Church Street. Modbury

### Art Room at the Bistro

Tutored Life Drawing  
Classes

Tuesdays 10:30am to 1pm  
Twice a month  
Booking Essential

Phone: 01548 831273

Opening Times  
Mondays—closed  
Tuesday to Friday 6pm-11pm  
Saturday 6pm-Midnight



## MARTIN LEY PLUMBING & HEATING

- Oil Installations,  
Servicing & Repairs
- Unvented Cylinders
- Bathrooms & Showers
- General Plumbing

Tel: Modbury 01548 830609  
Mobile: 07811 934551



- Hypnotherapist
- Emotional Freedom  
Technique Practitioner
- Reiki Master

Help with weight loss,  
self confidence,  
reduce anxiety, stress relief,  
pain management and quit smoking

Appointments available at Fifth Sense, Modbury.  
Home visits, evenings and weekends also available.

Please contact Liz  
07971 897652  
or email

liz-pearson@hotmail.co.uk

Liz Pearson BA(Hons); RMN; ITEC Dip; Hyp Dip CS  
Fully insured and a member of the  
Hypnotherapy Society and AAMET.



## Barnes Computer Services

Your Modbury One Stop Shop  
for Computer Help

- Help with technical  
problems—large or small
- Friendly lessons on using your  
computer, tablet or iPad in  
your own home
- Installing anti virus software
- How to use Word, Excel,  
Publisher and Access
- Advice on buying computers  
or tablets
- Posters, Letters, Spreadsheets  
Databases, Websites
- Printing & Laminating

01548 830031

bcsmodbury@gmail.com

## MICHAEL HAGGER

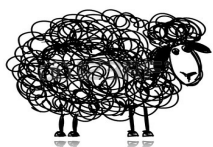
Professional Interior  
& Exterior Painter  
& Decorator.

Friendly and reliable, trained to City &  
Guilds advanced craft level with  
32years experience.



Lankwells Farm  
Burraton  
Ermington  
T 752881438.  
7445521.

Free  
Estimates & References.



### Local, tasty Black Welsh Mountain lamb for sale.

Available as half or whole  
lambs, ready packed and  
labelled for your freezer @  
£7/kg. All lambs reared  
naturally on permanent

pasture at **East Worthele Farm, Ermington.**  
We also have a limited supply of mutton, bagged  
and labelled. £4/kg if sold as halves, £5/kg if  
sold as separate joints.

Contact 01752 893051 or  
carolinebower@btinternet.com

## Newton Ferrers Equus

Pony Club

Holiday  
activities

Birthday  
Parties

Kids club



Adult lessons

Beginners to  
intermediate

Events &  
competitions

Private hacks

Indoor and outdoor riding for all weather conditions

Newton Downs Farm, Newton Ferrers PL8 1JA  
01752 872807 - www.newtonferrersequus.com

## Modbury Speed Networking/Breakfast Club

We are hoping for a September start date for our speed networking. We plan to meet in the Modbury Inn, Brownston Street, from 9am to 10 am every Friday.

Our aim is to meet and exchange details, collect the business cards of attendees throughout the year and be a point of reference for businesses seeking local contacts and additional work at various times of the year. We will have no restrictions on trades like some business clubs so its open to anyone.

**Wheelbarrow Market:** This weekend we have Bella & Bridget as organisers and the weather looks promising , for September we need volunteers please with an optimistic view on the weather too.

**Future:** We today discussed the possibility of a Loft Sale in the Autumn, and Saturday October 22nd was proposed with open doors 10 am to 3ish. At the sale local people can clear all those good quality items, make a profit and sell them, in we hope, the Modbury Memorial Hall and funds from the rental of the pitches going to local charities via the Chamber of Trade. As this will be under cover and at half term it should be an opportunity to get tidy before winter sets in and the Christmas decorations need to be found. We look forward to hearing back from you on this idea, which should bring people into Modbury as a place of interest and extend the Wheelbarrow Market idea.

Should you wish to take part please contact me at the e-mail address:  
jane.darbyshire@pspinsurancesolutions.com

Jane Darbyshire

---

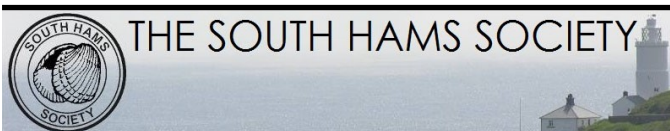
## MODBURY EDUCATIONAL FOUNDATION

A small grant is available to students who are resident in Modbury and have left school to start either a course of Further / Higher Education, or a Vocational Course, this autumn.

Please apply giving your home address and brief details of the course to :-

Rev Neil Barker, The Vicarage, Church Lane Modbury PL21 0QN Email revbarker@btinternet.com

Applications must be received by October 10th



### THE SOUTH HAMS SOCIETY

#### BEACH CLEANS

The next beach clean will be on Saturday, 17 September, at Soar Mill Cove. Why not join us?



Assemble in the car park behind the hotel at 12noon. (LW 13.13 ). This pretty little beach is very popular with families and walkers alike.

Remaining beach cleans for 2016 are at: Gara Beach (15 Oct), South Milton (Thurlestone) Sands (12 Nov) and Yarmer Beach and Leas Foot (17 Dec).

For more information about the South Hams Society, visit the website at:

<http://www.southhamsociety.org>

or contact Vivien Napper Tel: 01548 842405

Mob: 07855 383601.



### Kingsbridge Estuary Decorative & Fine Art Society

## The Fine Art of Forgery: Craftsmanship or Conjuring Trick

David Phillips

Venue: Methodist Church, 100, Fore Street  
Kingsbridge, TQ7 1AW

September 28<sup>th</sup> 2016 - 7 for 7.30pm  
September 29<sup>th</sup> 2016 - 10 for 10.30am

Everybody welcome – no need to be a member.  
£8 donation includes coffee/tea and biscuits.

KEDFAS

Registered Charity number 1158965

## Modbury Parish Council Response to Joint Local Plan

Modbury Parish Council is preparing a Neighbourhood Plan (NP) with the assistance of several volunteers and parish councillors formed into a Neighbourhood Plan Group (NPG). Over the past year they have held many consultation events as they gathered evidence to support the NP. **The evidence gathered so far indicates a preference for development post RA1 to be on smaller sites, of which there are several possibilities.**

The site analysis conducted under the Strategic Housing and Employment Land Availability Assessment (SHELAA) considered parcels of land presented by land owners in totality and not on individual fields within those parcels. We consider that there are some fields which could come forward to be developed free of the constraints SHDC have identified. **These could be considered instead of the SH 35 03 site, NOT in addition to it.**

The NPG is shortly to conduct a household questionnaire throughout the parish to assess the needs and aspirations of the community, these results will be available in the autumn.

As a result of the consultation on the JLP Modbury Parish Council held a public meeting on July 28th with Gary Streeter MP in the chair and District Councillor Lindsay Ward giving an explanation of the background to the plan and answering questions. All properties in the town were notified by hand delivered letters.

Over 120 people attended the meeting and made representations, the majority of which were against the single large allocation on the site adjacent to RA1. **When a show of hands was called for by Mr Streeter only two were raised in support of the allocation, the vast majority were against it, for the following reasons:-**

- The main objection is that, together with the RA1 site which is currently under construction for 93 dwellings and which will be the single largest development in the town, the two developments together will become a large estate served by a single road on the fringes of the town and divorced from it.
- It is considered premature to release this land until the full impact of the RA1 development can be assessed and the new population integrated into the town.
- If this land is needed for the period beyond 2026 it should be phased in some way. There is concern that development on this site would start as soon as RA1 is completed (in three or four years) and then there would be demand for further allocations well before 2034 when the LP is reviewed in 2021.
- The allocation as shown on the plan is for the entire SHLAA site. As shown it could take up to 200 houses, not the 80 suggested. Should this allocation go forward it should be redrawn to include a much smaller part immediately adjacent to the RA1 built area in the south east corner, not all five fields.
- There are concerns over the infrastructure requirements should development happen at a fast pace. The road network in Modbury already has difficulties and the junction of the RA1 estate onto the A379 has not been tested; the Health Centre will require greater capacity; there is a shortage of play provision; there are as yet unresolved flooding issues.
- Due to the nature of the Long Park estate to the east, partly contained within the listed Barracks Wall, there can be no footpath links between the new and older development thus reducing social cohesion.
- It is considered people will use their cars to shop, either in Modbury with its already difficult parking problems, or further afield to the detriment of local traders.
- The development of this site will open up access to further fields even more remote from the town centre.

**Thus Modbury Parish Council cannot support the suggested allocation of 80 houses on the site next to RA1 and Long Park. It does not object to having more houses but they should be located on three or four smaller sites around town. Part of the proposed site could be one of those sites. The development of Modbury should be managed in accordance with the Neighbourhood Plan being drawn up by the community and not by the need to fulfil housing numbers set by central government. Housing should not be considered in isolation from employment, this runs the risk of Modbury becoming a dormitory town.**

The site is shown for mixed use, with the NP tasked with identifying what provision for employment is needed. In our opinion employment use is not suitable on this site. Indeed, there is an existing industrial



use at Park Farm, on Barracks Road, which uses agricultural buildings next to the proposed site with an access track along the field boundary with Long Park. This use could give rise to complaints of noise and fumes in the future should the site be fully developed for residential use.

The 2007 Parish Plan, completed after a questionnaire which got a 75% response, said that Modbury should plan for a relief road "in the longer term" as that had been the wish of the majority of respondents. Traffic has increased since 2007, particularly very large HGVs, and the noise and fumes in the centre of town, with its conservation area and listed buildings, is becoming intolerable. As the towns and villages, particularly Kingsbridge, grow this will become even worse. Is it not time to consider planning for a relief road and use some of the housing allocation to pay for it?

There were comments for and against the proposed RA2 allocation, the main concern being the perceived loss of parking spaces should a Town Square be developed. A Town Square continues to be an aspiration of the Parish Council. There is also a concern that any RA2 development is breaking into the AONB and will create a significant impact on the landscape character. The very steep topography (more than 1:5 in places) and presence of a mains sewer easement will constrain development and require expensive civil and structural engineering.

**The NPG are concerned about the methodology used to justify the total housing numbers which form the basis of the allocations.**

- The Peter Brett report quotes "Planning Practice guidance is explicit that the 2012 based household projections are the most up-to date estimate of future household growth." This shows an increase of 19,456 households for the Housing Market Area (HMA) and a population increase of 32,600. The subsequent revision of the population forecasts based on 2014 increases population by 2,400 people, equivalent to just over 1000 households, giving a revised household increase of about 20,500.
- The report then argues that as the national forecasts are based on "short term trends" and they don't reflect "the growth agenda being pursued within the city of Plymouth" a different rate of net in-migration based on the past 10 years is used. This gives a population increase of 50,661, 15,000 greater than the 2014 national forecasts. The report doesn't give the associated household increase but we estimate it to be about 6,500 based on the 2014 relationships between population and household numbers.
- Other migration periods (20 years and 30 years) are dismissed because "they show a smaller overall population and dwelling growth than both the official household projections and the 10 year trend".
- In converting a household forecast increase into a dwelling figure it is accepted that allowances have to be made for the vacancy rate that is evident at any time, about 2.5%. It is less acceptable to make adjustments for the proportion of the new dwellings that could be second homes, about 10% in the South Hams. It is even less acceptable to apply a "housing market uplift" of 25% in the South Hams due to the high house prices and low average wages. The argument for this uplift is that building more houses will depress their price. In the South Hams, particularly the southern towns and villages, any houses built will be sold and prices will not come down to affordable levels for those on lower wages. No amount of "uplift" will reduce prices. Other means have to be found to provide housing at affordable levels rather than building more and more open market housing.

**Should a lower total figure for housing need be used across the HMA, the 5 year land supply will be more likely met and a lower need for housing allocations will be required in the towns and local centres in the South Hams. A figure of 60 for Modbury would be more reasonable.**

*Modbury Parish Council*

**EDDYSTONE WINDOWS**  
**Modern Energy Efficient Windows, Doors & Conservatory**  
 Aluminium or UPVC  
 National Quality Local Value!  
 Repairs and Replacement Glass

Modbury: 01548 830216/07484848272  
 mark@eddystonewindows.co.uk  
 www.eddystonewindows.co.uk

**ARCHITECTURAL DESIGN & SERVICES**  
 contact Jon & Emily Sullivan to discuss your requirements further

- Planning Applications
- Building Regulations
- On Site Supervision

**arab**  
 Architects Registration Board

**NEST DESIGN**  
 28 Galpin Street, Modbury, Devon, PL21 0QA  
 www.nestdesignstudio.co.uk 01548 830409



Andrew says...

SUPPORT YOUR LOCALS



## Modbury Broad Street and Church Street Shops

**Devonshire Fine Art** (01548 830872) opened in 1990 by David and Karen Smith, offers picture framing and the restoration of paintings and frames. They sell antique maps all over the world! Also for sale are antique paintings and antique prints specializing in Vanity Fair cartoon lithographs. Modern local paintings and prints from South Hams artists are sold. They make bespoke mirrors and always use conservation acid free materials. I have used their framing service and found it good. David has found me, more than once, Vanity Fair 'Spy' cartoons of my great grandfather, WLThomas, which was great as I can give them to family members. We are lucky to have David and Karen's shop in Modbury!



**Fifth Sense** (01548 831264) The business occupies the whole building, with Fran Lock and Mike Tillett fronting the shop, and Isabelle Leger with her Materia Aromatica upstairs. Her products are sold in the shop and on the internet and are mostly organic. Apart from these many local artists' work is sold, covering pottery and mugs, fused glass artwork, lampshades, soft furnishings, tea-towels, cards and prints, mirrors, re-furbished furniture, eclectic clothing, and colourful fair-trade toys. Once in the shop it is difficult to leave because you are drawn in again by something you've missed! The photo shows Fran amongst the treasures.



**Modbury News and POST OFFICE** (01548 830201) is a shining beacon that attracts communities from miles around. With national banks closing rural branches as fast as they can, it's up to Post Offices to replace them ... and they do. Peter, Justine, and their dedicated staff, Kate and Karen (in the photo with Justine) and others, offer a banking service like this: Pay-ins and cash withdrawals for Lloyds, Barclays, Nat West, HSBC, TSB, Halifax, RBS, Clydesdale, Cahoot, Nationwide and others. They offer most PO services, including Euros at any time and any other currency can be ordered, usually within 24 hours. Also, travel insurance and the National Lottery. Their NEWSAGENCY has national and local papers and a wide variety of magazines, maps, walking books, stationery products, very many cards, gift wrap etc.



UNBELIEVABLY bureaucrats in centrally heated city offices want to close local rural PO's.

**DON'T let them succeed. MARCH, wave flags! Together we will WIN!!**

**Ringrose** (01548 831509) next to the Post Office, started by Sarah Ringrose, a well-known South Hams artist, etcher and print maker, over fourteen years ago, is full of exciting cards and gifts. Silver and costume jewellery vies with candles and Emma Bridgewater pottery. Scarves, handbags and knapkins flash with colour, as more ceramics and pottery catch your gaze. Of course, they are the sole stockists of Sarah's own design of Modbury Mugs. "Solmate Socks" and "Jellycat" children's soft toys nestle below their massive collection of greetings cards for every occasion, many designed by Sarah herself and other well-known local Devon artists. Their paintings, original etchings and prints hang on the walls, while boxes and stands allow you to flick through. One is easily drawn in, then find it difficult to leave!! The photo shows Sarah with Christina.

*Andrew Thomas*





**Shop at The Top** (01548 830072) is the place for you. Mandy and Tim Rolt say "We sell designer quality 'Good as New' women's clothes, shoes, bags, hats and jewellery on a 50/50 basis". This is how it works: you bring in your quality 'Good as New' clothes for us to sell. We agree a price for each item. If sold, you receive 50% of the selling price. Why not have a cup of coffee and watch a customer drool over your Ascot hat, which was not quite 'you' but looks gorgeous on her! The photo shows a lovely dress and matching accessories.



**Kitchens By Dezine** (01548 830819) David and Donna George opened their shop in Church Street in 2008. Customers can choose from a wide range of designers and styles. They will recommend service trades to create your ultimate kitchen. They have done over sixty kitchens in Modbury! David has reached Gold Standard in Kitchen Design, so is well qualified to give you the best advice. Worktops can be Composite made by Consentino, the Spanish world leaders, or Corian by Dupont, Natural Granite or various wooden ones including prime oak and walnut. The floor and wall cabinets are bespoke to fit your kitchen, painted to fit your scheme or natural wood. David and Donna will advise, YOU choose! Here, you will get the service you've been looking for! The photo shows David and Donna in the showroom.



**Wild Goose** (01548 830715) Ty and Kay Freeman's Shop has everything, so if you don't go in you've missed out on your visit to Modbury. If you want the table upon which their collection of blue and white Burleigh Pottery is displayed, it's yours! Where the pottery goes is not your problem! That table was part of their collection of country furniture: corner cupboards, shelves, cabinets, dressers. More pottery and ceramics, Joanna Martin's hare sculptures are superb (I've had one for seven years), silver, marcasite, and costume jewellery, scarves and lots of hats, handbags and hand puppets for education and pleasure. Reclaimed pine bushel baskets are popular as are willow baskets, mirrors, pictures and prints and a good display of greetings cards. You'll think you can't get in, but persevere, it's worth it!



**The Brownston Gallery** (01548 831338) Catherine Gillen has been running the gallery for the past five years, specializing in promoting local artists from the South West. In addition to original oil paintings, there are limited edition fine art prints, ceramics, sculptures and designer jewellery. Artists represented include Anthony Amos, Robert Lenkiewicz, Andrew Miller, Michael Hill and many more. Regular exhibitions with evening openings, to which everyone is welcome, are held all the year round. Go through the gallery to the sculpture garden and relax, before deciding on your purchase! The photo shows Catherine Gillen and Alison MacKenzie in the Brownston Gallery.



**Pickles** (01548 830412), owned by Richard & Nikki Mitchell, is an Aladdin's Cave, full of little gems and hidden treasures. Step inside and you will discover everything you need for your kitchen, home and leisure – from wetsuits to wedding gifts, paint to pest control, charcoal to the latest Paul Hollywood cookware range. And for all those household DIY jobs, Gill, Hazel, Kelly and Mo are on hand to offer expert advice and guidance. With a wide range of pet foods, treats and accessories, Pickles are your local stockists for James Wellbeloved, Royal Canin, and Barking Heads. Free delivery for heavier items within a 10 mile radius, this includes bottled LPG gas. Timber can also be cut to order, usually within 24 hours. I have always got my DIY bits from Pickles, and also bulbs, lamps, batteries and more. As with the PO, Pickles are a Modbury NECESSITY! The photo shows Mo and Kelly off to the beach!!





# DEVONLAW



Your Local and Professional Solicitors can help you with:

- Conveyancing - Buying and Selling
- Business Advise - T&Cs, Buying and Selling, Debt Recovery
- Commercial Property - Landlord and Tenant and Development
- Employment Law

Call us on 01548 831689 or 07414 572757 to find out how we can help you.

Free no obligation quotes. Weekend and Evening Home and Office visits available on request.

## MODBURY BADMINTON CLUB

Memorial Hall

Tuesdays 7.30 – 10 pm

(September to May)

*New members always welcome*

*For further information please contact:*

**Gill Jolly Tel: 01548 831263**

# 1st Modbury Scouts present MAD DOG MCREA

Saturday 17th  
September, 2016

Modbury Memorial Hall  
Doors/Bar Open 7.30pm

Ticket Price: £13.50 Available from  
Pickles of Modbury

WeGot  
Tickets

Band Starts  
at 8.00 pm

## Property Of The Month



### Flat 2, Mount Howe

Part Furnished beautiful two bedroom ground floor apartment in the heart of the desirable location of Newton Ferrers, enjoying a delightful situation with long South & West facing views over the village, surrounding countryside & the sea beyond. The property is immaculately presented and comprises of a good size sitting room with large balcony, kitchen breakfast room, master bedroom with en suite a further double bedroom and shower room. there is garage parking and use of the communal gardens. EPC Rating D. Available immediately. No Housing Benefit, No Smokers, No Pets.

**£825 pcm**

**Modbury (01548) 830831**

## Luscombe Maye

Estate Agents

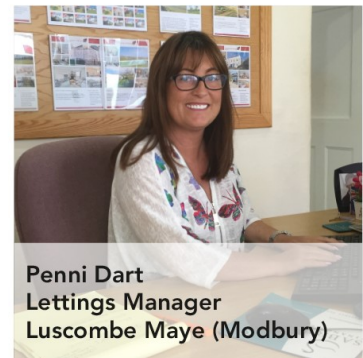


Dear Reader,

Can I first say a huge thank you to the Modbury office for welcoming me as part of their team. My name is Penni Dart and I am the Lettings Manager for Luscombe Maye and what a month, I have certainly seen an increase in the amount of properties coming to the market and subsequently being let within days, we have recently let properties in Yealmpton, Modbury, Newton Ferrers and South Brent.

If you have a property you wish to let or you would like some advice on the lettings market please call or pop in to book a free no obligation appraisal.

Best Wishes



**Penni Dart**  
Lettings Manager  
Luscombe Maye (Modbury)



## RAISING THE ROOF—FINAL CALL FOR SLATE SIGNING

A final opportunity to sponsor or dedicate a slate in aid of the Raising the Roof campaign will be held in the Assembly Room at The White Hart on Saturday 3<sup>rd</sup> September between 11am and 1pm.

Slates will be available to dedicate or sign, and then all of the slates will be fixed to the Church roof during the following week.

Also, if you have already purchased a dedicated slate but not written on it, then please do come along if you are able. Below are some shots from the drone showing the progress of the new roof.

**Alex Hammerstein**

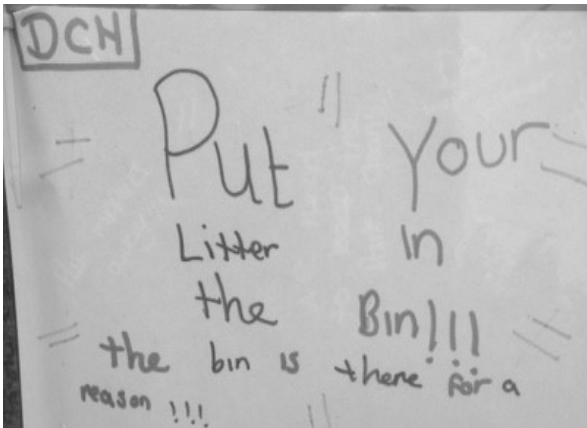


## Modbury Short Mat Bowls Club

A friendly, non-competitive club for the over 50s We meet in the Memorial Hall on Tuesday afternoons at 2pm. New members are very welcome to give it a try.

**Margaret Romney**

## Celebrations at Champernowne Play Park



dch



## Want to do something amazing this year? Get on your bike, says St Luke's

Mountain bike riders can now sign up for a "muddy amazing" cycle challenge that makes a difference as registration opens for the St Luke's Hospice Plymouth 2016 Tour de Moor on Sunday 9 October, sponsored by Murray Skoda.



New for this year is the route around Buckland Abbey, letting St Luke's super-cyclists go where we have never gone before and slog their way around our toughest courses. But it's not all hard-going, there's a straight-forward 11km ride, the intermediate 23km, or the big beast at 52km.

Claire Luckhurst, Events Fundraiser at St Luke's explained, "The Tour de Moor is coming back fresh and tougher than ever. We know our riders are looking for something a bit special so we're going out of our way to put on a muddy brilliant day! People in need of vital care across our area will benefit from all the hard work, it's so worth it."

The charity would also like to

remind riders that Tour de Moor will not only get the adrenaline pumping, but offer the real chance to make a difference to patients in the last months, weeks and days of life. St Luke's offers care for people dealing with life-limiting illnesses everywhere from Salcombe to East Cornwall, via Tavistock and the moors, supporting families as much as patients.

Kevin Murray, Managing Director from Murray Group (Ltd) added, "We are very proud to be sponsoring the Tour de Moor for the first time. Since the start of our partnership with St Luke's in 2014 we have always strived to be involved in a good local charity such as St Luke's. This event completely dovetails with the Skoda brand's appetite for cycling, we hope the event is a massive success and raises some well-deserved funds".



*St Luke's Corporate Fundraiser Nicola Keen with Murray Skoda Dean Price*



**St Luke's**  
Hospice Plymouth



## COUNTRY HILL ANIMAL SHELTER

Charity reg. No. 1114853

**Lots of bargains in furniture, nearly new clothes, books and bric-a-brac at our NEW CHARITY SHOP in the centre of Modbury.**

**Wanted, VOLUNTEERS and UNWANTED ITEMS FOR RESALE Collections possible. 01548 288001**



## Salcombe Oarsome

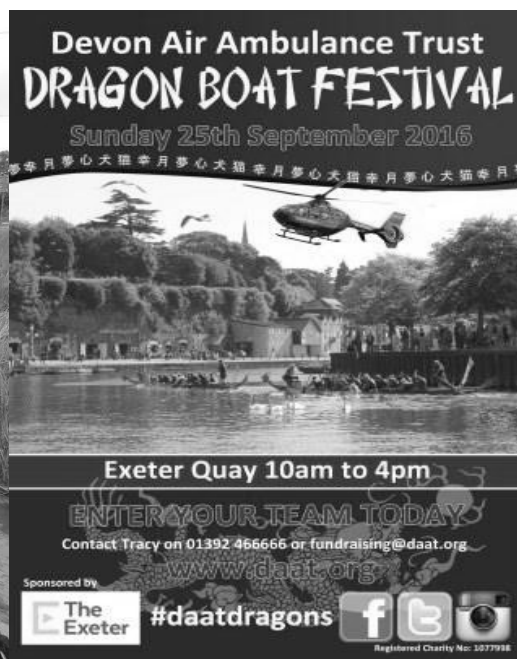
Salcombe Estuary Rowing Club (SERC) are fundraising for the Devon Air Ambulance Trust. Members of the Ladies Veterans section of SERC, including Modbury residents Justine Slade and Lynne Barnes, are in a team called 'Salcombe Oarsome' entered into the Devon Air Ambulance (DAA) Trust Dragon Boat Festival which is taking place on Sunday 25<sup>th</sup> September between 10am and 4pm at Exeter Quay.

The DAA provide an invaluable service to everyone who lives in or visits our beautiful county and are entirely reliant on charitable donations to operate the two helicopters in service. Salcombe Estuary Rowing Club would like to recognise the vital role the DAA plays in maintaining a 24-hour search and rescue service across Devon and thus have decided to take part in this event (provided by [www.dragonboatevents.com](http://www.dragonboatevents.com)). The crew of 16 plus a drummer are required to raise sponsorship of £60 per person to take part in the Festival and, in addition, are holding fundraising events (a paddle down the Avon on the 26<sup>th</sup> June and Cream Teas in Churchstow on the 30<sup>th</sup> July). Salcombe Oarsome have also set up a Justgiving page to help raise money for the Devon Air Ambulance. If you feel you would like to help raise money for this very worthwhile charity and sponsor Modbury residents Justine Slade and Lynne Barnes then follow this link:

(<https://www.justgiving.com/fundraising/jill-bremer>)

Look out for the Salcombe Estuary Rowing Club barrow at the Modbury Barrow Market selling beautiful, hand made, individual bags to raise money for the Devon Air Ambulance. The picture shows SERC a 'paddle down the Avon' day when £215 was raised from a raffle and sale of coffee and cakes.

**Lynne Barnes**



Noah's  ARK

**A time of songs, stories and play for the under 5s**

1st & 3rd Thursdays of the month  
9.15 am, term time, 10.00 am holidays  
£1 per family

 **St George's Church**  
**Modbury**  
(Car park in Church Lane)

For more information contact  
**Helen Pickard 01548 830216**




## SOUTH HAMS CHILDREN'S CENTRE

South Hams Children's Centre is based in Totnes with satellites sites in South Brent and Dartmouth. The services are commissioned by Devon County Council and South Hams Children's Centre is managed by Action for Children.

We aim to ensure that every child gets the best start in life and South Hams Children's Centre works alongside local families with under fives, providing information, advice and a wide range of services; Play sessions, help with returning to work, finding childcare, family support, family health, and much more. We work closely with a wide range of other service providers to ensure we are able to answer your questions ...or find someone else who can!

For more details telephone 01803 847626



## Yealm U3A Photography Exhibition

17<sup>th</sup> to 29<sup>th</sup> September

The Gallery Project,  
Noss Mayo Village Hall

Eight local photographers, including some eminent members of the Royal Photographic Society, will be showcasing some of their work, which will be for sale at affordable prices, including framed and unframed images and cards.

This free exhibition will be held in The Gallery Project at the rear of Newton and Noss Village Hall in Noss Mayo, **from Saturday 17<sup>th</sup> September until Thursday 29<sup>th</sup> September.**

**It will be open on Wednesdays, Thursdays, Saturdays and Sundays between 11am and 5pm.** Do come if you can.



THE UNIVERSITY OF THE THIRD AGE



**Retired or no longer working full time?  
Keen to meet people, learn new things, have new experiences?**

### IVYBRIDGE U3A

**could be just what you are looking for!**

*The next General Meeting will be at  
THE WATERMARK, Ivybridge on*

*Monday 19<sup>th</sup> September 2.00pm – 4.00pm*

**Speaker: Anida Rayfield**



### The King is Coming

**The Visit of King George III &  
Queen Charlotte to Saltram House**

New and potential members welcome.  
The U3A offers a wide range of interest groups for you to join including Walking, Looking at Art, Dartmoor Archaeology, Etymology, Bridge, Tai Chi, Local History – and many more.

See our website for full details [www.ivybridge-u3a.org.uk](http://www.ivybridge-u3a.org.uk)

Or email [ivybridge.u3a@gmail.com](mailto:ivybridge.u3a@gmail.com)

Or phone 01364 724700

**14-17 September 2016  
Malborough**

**KATS presents**

**Alan Ayckbourn's  
adaptation of**

**Tons  
of  
Money**

Original by Will Evans and Valentine

**Tickets on sale early August**

**Kingsbridge Information Centre  
[www.kats-kingsbridge.co.uk](http://www.kats-kingsbridge.co.uk)**

### **Aveton Gifford Preschool Playgroup**

Every Monday morning 9.45am in term time

Babies, Toddlers and Preschoolers welcome

A friendly group always happy to welcome newcomers

Find us in The Hive, located behind the school, access through the school.

### **MODBURY**

#### **MEMORIAL HALL**

Reg. Charity 300901

**A Superb Amenity**

**Available to the Whole Community**

**Offering**

\*A Large Hall & Stage with 150 plus capacity\*

\*Adjoining Room for smaller events\*

\*Large Kitchen for Catering\*

\*Safe Environment on these Dark Winter Nights\*

\*A short walk from the Town Centre\*

\*Car Parking\*

**On-Line or Telephone Booking**

**[www.modburymemorialhall.co.uk](http://www.modburymemorialhall.co.uk)**

**Tel: Pauline Ryder 01548 830 133**



## MODBURY WI

On August 2<sup>nd</sup>, the Modbury WI hosted a Walk and Cream Tea event. Below are just a few of the comments received from guests.

"Thank you for inviting us over to join you for the guided walk around Modbury and the lovely cream tea. We enjoyed meeting all of you, and we are so impressed by all that has been achieved in such a short time by the Modbury WI." Halwell and Morleigh WI.

"On behalf of the Yealmpton and Brixton WI, thank you for inviting us to your event. We are sure that the Modbury WI will go from strength to strength".

"We had fun exploring the hidden corners of your beautiful town and learning more about its history from Sue Rogers, our guide, who was most helpful and informative on the history of Modbury". Down Thomas and Heybrook WI.

There were many compliments too from our other guests who included Loddiswell, Ringmore and Avonwick, and Kingsbridge WIs. What accolades! what a team! Well done everyone who helped to make the event such a success.

The next meeting of the Modbury WI will be on Friday September 2<sup>nd</sup>. We shall be entertained by Maggie Duffy, a professional entertainer, with folk songs and tales of Devon. I look forward to all our members coming along to enjoy the evening. Visitors and non-members are invited to join us and for whom there will be a small charge. Should you wish to become a member now, no need to wait, as you only pay for the remaining months up to December. Membership also includes a monthly magazine, some discounts and offers, as well as a Devon Newsletter with information on local craft workshops, and federation visits. For further information, please phone 01548 830687, or e-mail conmay@gmail.com.

PS. Ringmore WI invites you to pop in for their home-made cakes and a cuppa which will be available every Sunday up to and including September 4<sup>th</sup>, 3.15 to 5.30 pm., at the Ringmore WI Hall and Gardens.

*Connie O'Neill, President*

theWI  
INSPIRING WOMEN



**THE ONE & ONLY  
FABULOUS**

# MODBURY BARROW MARKET



EVERY SATURDAY JUNE- SEPTEMBER  
**9.30-12.30**  
BY POUNDWELL CAR PARK  
BEHIND THE WHITE HART

A pop up market featuring featuring local produce  
handmade items, delicious delicacies,  
local arts & crafts.



**FIND  
US ON  
FACEBOOK**




South Hams  
District Council

Make your claim  
**Online**

Quicker  
Easier

Do it online 24/7

**Making a benefit claim has never been easier or quicker.**

You can now complete the whole process online from a computer, tablet or mobile. No need to post your documents or visit the council offices.

**Benefits Calculator**  
Use the calculator to see if you are entitled to benefits

**CLAIM**  
Make a Claim  
Register a new claim for benefits

**Make a Change**  
Change the details of an existing claim

[www.southhams.gov.uk](http://www.southhams.gov.uk)



# MODBURY MEMORIAL HALL

'A Community Hall Fit for All'

Saturday 1st October at 7.30pm

No! It's not a keep fit class – it's a Disco!

And it's to raise funds to complete the project

Featuring the return of the **Incompetent Brothers Disco**

and the return of the **Modbury Players May Fair Cabaret** performance.

Bar and Raffle.

## Angel Heart Theatre

present

### Freya

for children age 4+

**Sunday, 27 November 2.30pm**

at Kingston Reading Room.

Child £5, Adult £7.50, Family £20.

On the day child £7, Adult £10, Family £25



## WELCOMES NEW MEMBERS

Annual membership:

Family £60, Single £38, Student/Junior £19.50

Mini-tot (8 and under) £10.50

Non member court hire £6/hour from Modbury P.O.

Adult and junior coaching available throughout the year.

Enquiries: [modburytennisclub@btinternet.com](mailto:modburytennisclub@btinternet.com)

Tel. 01548 831064 or 01548 831340

## Community Table Top/Garage Sale

On the green behind the entrance to Long Park

**Saturday, 3<sup>rd</sup> September**

**2pm – 4pm**

Come along for bargains such as

- Sports equipment
- Garden & DIY tools
- Children's toys
- Ex-Pet Shop stock
- Timber & decorating materials
- Crafts & bakes

Percentage of all sales to  
**Devon Air Ambulance**



For more information call 01548 830677  
or email [margaretm1059@gmail.com](mailto:margaretm1059@gmail.com)

The Modbury Pantomime returns with

## ***The Elves and the Shoemaker***

on 5, 6, 7 January 2015

Anyone interested in being:

onstage, backstage, costume, music, singing, mime

\*\* Support or Star\*\*

Please come to an

## Open Meeting

at 11:00

on Saturday 17 September

in Modbury Memorial hall.

Nigel & Felicity Guild look forward to seeing you then:

and/or contact us any time:

20 Church Street

01548 830786

[ModburyPantomime@f2s.com](mailto:ModburyPantomime@f2s.com)

Are your feet trying to tell you something?



If your feet are crying out for professional care:



Bernard Hill Podiatrist  
Bsc (Hons) MChS

### Call me today

for advice & treatment for:  
**Difficult Nails, Heel Pain, Corns and Hard Skin, Diabetic Foot Care, Verrucae, Cracked Heels, Bio-mechanical Testing, Sport Injuries etc**

Home visits or treatment in our Aveton Gifford clinic  
Mon-Fri and Eve & Weekend appointments on request



**2RightFeet**  
Podiatry/Chiropody  
**01548 830 761**



Or call **07808 953 538** leave a message and I'll get back to you  
[www.2rightfeetpodiatry.com](http://www.2rightfeetpodiatry.com)

# walk&talk



South Hams  
District Council

September walk dates:-  
6th September  
13th September  
20th September  
27th September

Contact Modbury volunteer walk leaders:

Sue Rogers (831289)  
Sandra Sidey (830582)  
Catherine Speight (830195)  
and Monica Yunnie (831049)

Kate Hewett

[wfh@southhamscvs.org.uk](mailto:wfh@southhamscvs.org.uk)

Walking for Health Co-ordinator

WE ARE  
MACMILLAN  
CANCER SUPPORT



ramblers

Supporting you to  
get active and stay active

## SOUTH HAMS MOBILE LIBRARY



**Saturday 24th September**  
Poundwell Square 09:30 to 12:30

**Tuesday 6th September**  
Ayleston Park 14:45 to 15:30  
Poundwell Square 15:35 to 16:35



### New Pilates classes

**Modbury Memorial Hall**  
Wednesdays: 09.30 - 10.30 and 18.00 - 19.00

**Aveton Gifford Village Hall**  
Thursdays: 18.00 - 19.00

Beginner / Intermediate  
pre-booking is essential

**Email: [abbie@pilates-sessions.co.uk](mailto:abbie@pilates-sessions.co.uk)**

Pilates focuses on mobilising the joints,  
good movement and posture.

Trained with **Body Control Pilates** and  
**The Register of Exercise Professionals**  
Smaller classes, tailored to you.

Price per class: £8.50  
(booked in blocks of approx 6 weeks)

**[www.pilates-sessions.co.uk](http://www.pilates-sessions.co.uk)**  
**07870 862139**

## KINGSBRIDGE EYE CARE GROUP

**Nigel Frost Optometrist**

3, Chene Court, Modbury

01548 830944

### *Clinical Excellence*

Full Eye Health Examinations  
Contact Lens Specialist  
Eye Examination Packages  
OCT screening packages  
Diabetic and Glaucoma Examinations  
Retinal Photography  
Luxury Designer Brands

**Kingsbridge Eye Care**

1, The Promenade  
Kingsbridge  
01548 856854

**Salcombe Eye Care**

84, Fore Street  
Salcombe  
01548 843207

**[www.kingsbridgeeyecare.co.uk](http://www.kingsbridgeeyecare.co.uk)**

## Safari Supper Helps Court Refurnishing

A great big "THANK YOU" to everyone who participated in the recent Safari Supper to support the Club's court resurfacing fund. Safari Suppers are an ideal way to meet people in the community that you may not have known before and to enjoy each other's

hospitality. The gathering for coffee at the end of the evening in The Bistro was really lively and thank you to Annabel for hosting the finale.

A grand total of £420 was raised and everyone had a very social and enjoyable evening in the warm summer sunshine.

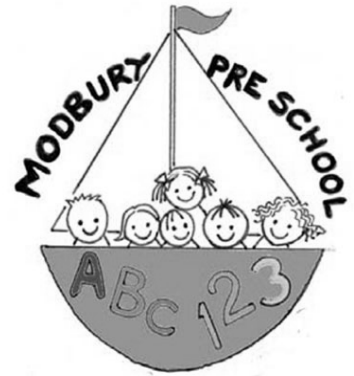
If you would like to be included in any future event do please let us know.

*Lynn Weeks and Jane Bullen*

modburytennisclub@btinternet.com

## Modbury Pre-School, Barracks Road

Open 9am-3.30pm Mon-Fri, during term time.  
For children 2 - 4 years. Toddler sessions on a Thursday afternoon 1-3.30pm. Please contact us for more information or to discuss your needs. The preschool also operates a breakfast, afterschool and holiday club for 3-11 year olds.



www.modbury-preschool.org modburypreschool@hotmail.co.uk 01548 831477

### Vintage Loft Sale

Saturday 22<sup>nd</sup> October 2016

Memorial Hall, Modbury

Doors open to the public 10am-3pm



#### Refreshments available

50 pitches available to book now!  
£10 per 6ft half table  
Monies raised from pitch hire to support Modbury charities

Contact either

**Jane** Jane.Darbyshire@pspinsurancesolutions.com

**Alice** acartertyler@nash.co.uk

to book your pitch before 1<sup>st</sup> October 2016

## in Vogue

Quality Painting, Decorating & Renovation  
All aspects of interior & exterior decoration & design undertaken

Wall papering Wall & floor tiling

Bathrooms and kitchens fitted

Dry lining Plastering

Renovation featured on BBC's Britain's Dream Homes

**NEW**



Decorate in half the time with the perfect finish using the Wagner Spray System—perfect for new builds & renovations.

**No job too big or small**

Over 30 years experience—references available  
Call or email to book your FREE no obligation quote

**01548 831551**

**in.vogue@hotmail.co.uk**



## the**brownston**gallery

9 September - 1 October

### THE MISTS OF TIME

exhibition of work by

**ANTHONY AMOS**

and introducing

**JULIE ELLIS**

29 September - 7-10pm

### CHARITY ART AUCTION

raising funds for

### SALCOMBE LIFEBOATS

an evening of art, fizz & canapes

Music by the fabulous Scarlet Ladies!

*(Please contact the Gallery to reserve free tickets)*

[www.thebrownstongallery.co.uk](http://www.thebrownstongallery.co.uk)

36 Church Street, Modbury, Devon PL21 0QR  
tel - 01548 831338

ghd MOROCCANOIL

dermalogica

GOLDWELL



TANGLE  
TEEZER

FELLOWSHIP  
BRITISH HAIRDRESSING  
creative excellence  
MEMBER 2016

Late night Fridays

London House, Church Street,  
Modbury South Devon

**01548 830152**

Email: [info@nicholashair.co.uk](mailto:info@nicholashair.co.uk)



nicholashairandbeauty



@nicholashair

# Nicholas



## Aune Valley Meat & Valley View Café

*You will be surprised just what we do!*



Rake Farm, Loddiswell &  
6 Church Street, Modbury

Loddiswell Shop: 01548 550413

Café: 01548 559126

Modbury Shop: 01548 830240



[www.aunevalleymeat.co.uk](http://www.aunevalleymeat.co.uk)

MATERIA AROMATICA



# Fifth Sense

- \* Organic essential oils, creams, soaps & skincare products
- \* Fairtrade gifts, homeware & toys
- \* Select range of women's & men's clothing
- \* Local crafts
- \* Antique & refurbished furniture

5 Church Street, Modbury,  
Devon PL21 0QW

Tel: 01548 831264 email: [info@fifthsense.co.uk](mailto:info@fifthsense.co.uk)

To advertise in the Modbury Messenger, please contact Sacha Hager, the Parish Clerk at:

[parishclerk@modburypc.co.uk](mailto:parishclerk@modburypc.co.uk)

Or call in at the Parish Office,  
2 Galpin Street from 2-4pm on Mondays.



**01548 550909**

**07970 809978**

[danielknightelectrical@aol.com](mailto:danielknightelectrical@aol.com)



**10% introductory discount for all  
Messenger readers.**

Fast, efficient and reliable domestic  
and commercial electricians,  
covering all aspects of the trade  
including fire, sound, lighting, power  
and PAC testing.

***'from spark to finish'***

Office: 01548 831249 (Modbury)  
James: 07825 214368  
info@mrsparkyco.com



A friendly, honest  
and reliable service, covering all  
aspects of the building trade.  
Fully insured and guaranteed.

Transforming any part of your home,  
***'from foundation to decoration'***

Office: 01548 831249 (Modbury)  
Mr Builder James: 07825 214368  
Mr Builder Paul: 07974 508947

james@mrbuilderco.com

# Marchand Petit

ESTATE AGENTS

www.marchandpetit.co.uk

We are successfully selling and letting property  
in Modbury and the surrounding area.

If you would like any property related help and advice  
please pop in and see our Modbury team  
or contact us:

**01548 831163**

modbury@marchandpetit.co.uk

 <b>Dartmouth</b> 01803 839190	 <b>Kingsbridge</b> 01548 857588	 <b>Millbrook</b> 01752 829000	 <b>Modbury</b> 01548 831163	 <b>Newton Ferrers</b> 01752 873311	 <b>Salcombe</b> 01548 844473
 <b>Totnes</b> 01803 847979	 <b>London</b> 0870 112 7099	 <b>Country House</b> 01548 855590	 <b>Lettings</b> 01548 855599	 <b>New Homes</b> 01548 233100	 <b>Marketing</b> 01548 855593