



illustration - Annabel Gregory

For the People of Modbury - Best Kept Large Village 2013

Volume 15, Issue No. 195

June 2015



MODBURY FAIR

The Modbury May Fair Committee would like to thank everyone in Modbury and beyond who came together to celebrate a fantastic 'Great Inventions' week. It involved lots of people giving up their time to organise memorable events but it reminds us how lucky we are to live in such a great community.

If you would like to get involved next year or have any ideas of how we can improve please email guy.thomas@mercedes-benzsouthwest.co.uk



The Ukelele Band Train at the May Fair Carnival



Photo: Ann Cooke accompanied by her son, Reuben, at Buckingham Palace

Modbury Resident Ann Cooke Honoured at Buckingham Palace

Local resident Ann Cooke has had the great honour of attending the recent Queen's Garden Party on Tuesday 12th May. She was invited on behalf of HM Lord-Lieutenant of Devon for her charity work over a number of years. This includes training 21 Guide Dog puppies for The Guide Dogs for the Blind Association and helping on the Modbury Fair committee for over 40 years of which 33 years was as treasurer. Ann has also been involved with the Modbury Pantomime as treasurer for a similar number of years.

Ann attended the event at Buckingham Palace in London with her son, Reuben. Ann told the Messenger "the invite was an honour and a wonderful surprise - my charity work over the years has been so rewarding and I was thrilled to attend".

Reuben Cooke

Share your news with the people of Modbury. Send items of interest, in Microsoft Word or RTF format with photographs in jpeg format to: modburymessenger@live.co.uk. If you haven't got computer access, take your stories and photos down to the Parish Office in Galpin Street and I can scan them for publication.

Lynne Barnes, Editor, Modbury Messenger

Modbury Parish Council

MESSENGER CLOSING DATE

For the July edition the closing date for submissions is 10th June

Please send all copy, by e-mail to modburymessenger@live.co.uk.

Payment for all advertisements must be made in advance. Cheques should be made payable to 'Modbury Parish Council' and sent to The Parish Office.

For advertising tariff info please email parishclerk@modburypc.co.uk or telephone 01548 830222

For further information please contact Sally Walsh on 01548 830222 (Monday mornings – or leave a message).

The Modbury Messenger is published by the Modbury Parish Council and is printed by Hardy Print, Ivybridge.

The views expressed in the Messenger do not necessarily represent those of Parish Council.

The new Parish Council's first meeting was put back a week because of the elections so the only news is that the following councillors were elected for the next four years.

Chris Barnes, 37 Long Park
Robin Berry, 1 Ayleston Park
Lucy Brown, The Green, Palm Cross
Bill Cole, Tree Tops, Plymouth Rd
John Joseph, 1 Barracks Rd
Mark Lawrence, 11 Poundwell Street
Stephanie Rayner, 15 The Priory
David Rickman, 11 Wakeham's Close
George Rosevear, The Quoin, 4 Bigbury Ct, Bigbury
Bernard Taylor, 4 Silverwell Park
Daniel Turner, 20 Brownston St
Trevor Ward, Taormina, Barracks Rd

Commiserations to Jon Harvey and Allan Jenkins but thanks for standing and giving the people of Modbury the opportunity to vote for their representatives.

At the PC meeting on 18th May Lucy Brown was elected Chair and Bernard Taylor was elected Vice-Chair. Hopefully phone numbers and e-mail addresses for councillors will appear in the next Messenger, along with their committee responsibilities.

To householders without a parking space

Did you know that you can park in any SHDC car park after 4.00pm and up to 10.00am the next morning for only £21 a year? Look on the SHDC website under "Resident Parking Permit" for details. There is a more expensive permit which lets you park at any time in the overflow part of the Poundwell Meadow car park. It is called a "Commuter Permit" and costs £191 per annum, just over 5p per day.

Contacting Your Local Police Community Support Officer

You have several ways of contacting your local PCSO, Warren Palmer, from the Kingsbridge Neighbourhood Policing Team
Telephone: 07703885625

Email - warren.palmer2@devonandcornwall.pnn.police.uk

For non emergency police enquiries, dial 101

MODBURY PARISH COUNCIL OFFICE.

2 Galpin Street, Modbury PL21 0QA

Tel: 01548 830222

parishclerk@modburypc.co.uk

Hours of Business- Mondays 9.00am – 1.00pm

Parish Surgery 10 – 11 am every Saturday

Planning Applications: Notices of planning applications lodged with SHDC are displayed on the Parish Noticeboard outside the Post Office. Copies of plans relating to these applications can be inspected at the Parish Office during the above office hours.

Contacting Parish Councillors: Parish Councillors attend the Parish Office, on a rota basis, on Saturday mornings from 10.00 - 11.00am. Should you have any parish matter you would like to discuss come along to the Office or call in to the Office and speak to the Parish Clerk, Sally Walsh. Alternatively you can write a letter or speak at the public forum held at the beginning of each monthly meeting of the Parish Council, on the second Monday of each month at 7.15pm in the Pavilion, QEII Recreation Ground.

PERSONAL ANNOUNCEMENTS

(Births, Deaths, Marriages, Thanks etc)

£5 per insertion—Max. 50 words
(Subject to available space)

The Editorial Committee reserve the right to précis/abbreviate any copy submitted for inclusion in the Modbury Messenger.

The contents of the Modbury Messenger may not be reproduced in any form without the prior written permission of Modbury Parish Council.

Around the Churches



**St. Monica's
Roman Catholic Church**

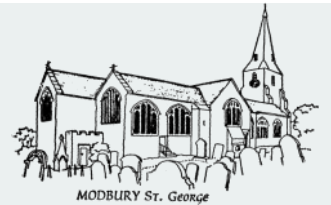
St Austin 's Priory

01752 892606

Sundays 8.45 am Mass

Everyone Welcome

**St George's,
Modbury**
Services and Events



June

Thursday 4th	9.15am	Noah's Ark
Friday 5th	7.00pm	Lamagoao Curry Evening At the Modbury Pavillion
Sunday 7th	9.30am	Holy Communion
Thursday 11th	9.30am	Holy Communion
Sunday 14th	8.00am	Holy Communion
	9.30am	Family Service
Thursday 18th	9.15am	Noah's Ark
	2.00pm	Robert Stetson Baptism Anniversary
Saturday 20th	2.00pm	Church Fete
Sunday 21st	9.30am	Family Communion with Sunday Club
Tuesday 23rd	10.30am	Open the Book at Modbury Primary School
Thursday 25th	9.30am	Holy Communion
Saturday 27th	12 noon	Wedding
Sunday 28th	8.00am	Holy Communion
	9.30am	Morning Prayer
Thurs 2nd July	9.15am	Noah's Ark
Sun 5th July	9.30am	Holy Communion



**The Kingsbridge Estuary
Decorative and Fine Arts Society**

Turner in Devon

Sam Smiles

June 24th - 7 for 7.30pm

June 25th - 10 for 10.30am

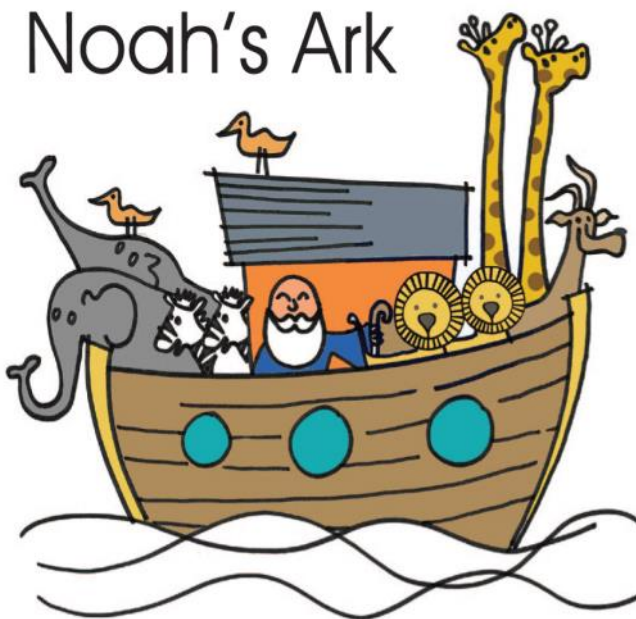
Methodist Church

100, Fore Street, Kingsbridge

No need to be a member – all welcome

Donation £8 including a coffee or tea

Noah's Ark



A time of songs, stories and play for
under 5's

1st and 3rd Thursday's of the month

9:15 during term time,

10:00 in the holiday's

St. George's Church, Modbury

£1 per family

Contact Helen Pickard 830862

ST GEORGE'S CHURCH

SUMMER FETE

SATURDAY JUNE 20TH 2-5PM

**Bric a Brac - Bottle Tombola - Produce - Plants
Cakes - Books - Toiletries - Jewellery
Stationery - Children's Activities**

Everyone is welcome to this fun community afternoon

**Treasure Hunt
Games
Raffle and Teas**

Contributions of cakes, preserves, produce, plants, books, good quality bric a brac, toiletries, jewellery, stationery and full bottles would be much appreciated. Also donations for the raffle hamper prize. *Thank you.*

Please contact:

Sue Chambers 831447

Rachel Taylor 830021

Carole James 830804 is willing to come and collect your good quality bric-a-brac

A Tight Squeeze



R West & Son, owned and run by local residents, Rob and Gill West, have been sub contracted by Pipex px® of Plymouth, who won the contract to manufacture the Combined Sewer Overflow (CSO) Chamber for the project in the bottom Poundwell car park.

Pipex px® off-site manufacture advanced thermoplastic C.S.O. chambers on a regular basis, for many clients up and down the country, with R West and Son constructing the shuttering around the chambers to allow for an immediate concrete pour around them. Visit Pipex px® website for more information <http://www.pipexpx.com/products/>

Rob confirmed this was about the 30th chamber they had shuttered for Pipex px® and was not the largest by far, but had special interest, due to the fact of his family living in Modbury for many generations.

The Chamber was delivered on Monday, 13th April, measuring 7m long by 4.5m wide – Poundwell Street is 4.5 m wide at its narrowest point, so before leaving the Pipex px® facility, some pipe work had to be modified, it was a tight squeeze, but due to careful planning and good driving, delivered to site without scraping any walls.

Modbury Society Summer Party

Saturday 20th June from 7pm-9pm

At Middle Traine, Brownston Street

Tickets Available from Pickles—Visitors Welcome

MARS 50 - 50 LOTTERY RESULTS

March 2015

Prize	Lottery No.	Name	Amount
1st	66	Mrs Grainger	£34.50
2nd	148	Hilary Berry	£20.70
3rd	88	David James	£13.80

April 2015

1st	29	Angus Hope	£34.50
2nd	156	Helen Pickard	£20.70
3rd	173	Emma John	£13.80

May 2015

1st	67	John Martin	£34.50
2nd	53	Simon Bonnell	£20.70
3rd	143	Colin Low	£13.80

MOBURY ASSOCIATION OF RECREATION & SPORT

MARS AGM

Wednesday 3rd June

8.00 pm

White Hart Hotel

This will be followed by a meeting of the new committee.

Local Adverts

**ARE YOU PAYING TOO MUCH TAX ?
ARE YOU GETTING VALUE FOR MONEY FROM
ACCOUNTING SERVICES ?**

*For a free confidential review, and a service second to none
contact :*

MARTIN RANWELL, FCA

ELLIOTT & PARTNERS

Chartered Accountants

**Tuckers Brook House, Modbury, Devon PL21 0UT
Tel 01548 830452**

**e-mail: ranwell@modbury2.eclipse.co.uk
www.elliottpartners.co.uk**

**EXTENSIVE EXPERIENCE IN BOTH THE PROFESSION AND
COMMERCIAL MANAGEMENT
IRIS (iXBRL compliant) and Sage software
PROPERTY MANAGEMENT SERVICES**

KINGSBRIDGE EYE CARE GROUP

Nigel Frost Optometrist

3, Chene Court, Modbury

01548 830944

Clinical Excellence

Full Eye Health Examinations
Contact Lens Specialist
Eye Examination Packages
OCT screening packages
Diabetic and Glaucoma Examinations
Retinal Photography
Luxury Designer Brands

Kingsbridge Eye Care
1, The Promenade
Kingsbridge
01548 856854

Salcombe Eye Care
84, Fore Street
Salcombe
01548 843207

www.kingsbridgeeyecare.co.uk



**Tel- 01364 72418 Mobile- 07710453118
www.srplumbingheating.co.uk**

- LPG & Natural Gas
- Oil
- Plumbing
- Heating
- Boiler Service and Repair
- Bathroom Installations
- Underfloor Heating
- Domestic Electrical Installer
- All Work Guaranteed
- Modbury Based Engineer



LOCAL DOMESTIC ELECTRICIAN

- ✓ Installations, Cookers, showers, fans, inside and outside lights
- ✓ Alterations / additions / sockets / rewiring / Earth bonding
- ✓ Consumer Units – no better price fitted
- ✓ No job too large or too small
- ✓ Honest and reliable service
- ✓ PAT (portable appliance testing) inc certificate

All work guaranteed/ certificated
Fully insured / qualified & registered with NICEIC

- Call **Phil** for a free, no obligation quote or callout;

Tel: 01548 859041

Mob: 07769 840012

email: **lightworkselectrics@gmail.com**

solereflexions

for mind, body & spirit



I am an Ingham Qualified, Fully Insured Reflexologist who can offer treatments at either my rural treatment room just outside **Modbury**, within the comfort of your own home and now also available at **Fifth Sense** in Modbury.

So why not call me today to see how reflexology may help you.

Gift Vouchers available Gift Vouchers available

Bridget Thomas, **MAR IIR**

Tel: Modbury 01548 831629

Mob: 07973 506083



ASSOCIATION OF REFLEXOLOGISTS

Frenchy's Beauty

Your Local Mobile Beauty
Therapist & Nail Technician in
the Modbury area

Contact Victoria on:

07432 643900

www.frenchysbeauty.co.uk

OFFERING SALON TREATMENTS
IN THE COMFORT OF YOUR
OWN HOME

...relax & feel pampered



SOUTH HAMS SOCIETY BEACH CLEANS

Why not join members of the South Hams Society for a beach clean? You will be made very welcome.

The next one is at **South Milton**, on **Saturday 13 June**. Meet at the Beach Hut at **10 am**. It may even be warm enough to swim after our hard work.

LW 10.03 BST

Then it's **Soar Mill** on **4 July**. Meet in the car park behind the hotel at **2 pm**. It is a superb time of year to be on this dramatic beach. The beach seems to attract an unusual amount of rubbish washed in from who knows where, so well worth the effort.

LW 14.31 BST

More beach cleans are scheduled for 2015: Gara (1 August, 12 Dec), Yarmer/Lease Foot (29 August), Soar Mill (12 Sep), South Milton (10 Oct), West Charleton (14 Nov)

For more information, please contact Vivien Napper 01548 842405 viv@rathlyn.eclipse.co.uk

Materia Aromatica & Fifth Sense

Offer a large range of

- Organic skin care, essential oils, soaps & accessories
- Fair-trade gifts, homeware & toys
- Local crafts, British-made & eclectic items
- Exclusive summer wear & jewellery

The Modbury Therapy Centre,
for a relaxing experience

Beauty, breathwork, counselling,
hypnotherapy, massage, reflexology, reiki ...

Book or walk in on the spur of the moment

01548 831671 or 07757 165828

5 Church Street, Modbury PL21 0QW

HARDY PRINT

DO YOU HAVE A NEED FOR
HIGH QUALITY
LOW COST PRINTING ?
THEN WE CAN HELP YOU

FLYERS, POSTERS, BROCHURES, BOOKLETS
& MUCH MORE

HIGHLY COMPETITIVE COSTS,
AMAZING TURNAROUND !
DESIGN SERVICE AVAILABLE

WE CAN ALSO OFFER, WEBSITE DEVELOPMENT,
MAILING SERVICES, MARKETING CONSULTANCY,
SEARCH ENGINE OPTIMISATION
AND PUBLISHING SERVICES.

LET US KNOW WHAT YOU WANT TO DO

CONTACT JON HARDY

07801 238859

OR

jon.hardy@btconnect.com

LOCATED IN IVYBRIDGE
FOR A VERY PERSONAL SERVICE

AQUA

HAIR DESIGN

Modbury

Unisex Experienced Stylists

7, Modbury Court
Church Street
01548 831260

Modbury Physio

Sue May, a local physiotherapist with many years' experience now offering private physiotherapy

Based at Modbury Osteopathic Clinic Monday (Coppers Corner - The old police house on the Plymouth Road) Monday pm and Thursday am

If you would like to make an appointment or discuss if physiotherapy is for you, please contact us on:

07980 922273 or modburyphysio@yahoo.com

Saturday 13th June, 7.30pm,
Modbury Memorial Hall

Think Pink Hampers and Champers Evening

in aid of the Primrose Breast Cancer

Tickets available from myself, Jackie and at
Petty Cache

For more info tel- Jackie 07748999700
or Rebecca - 07770740605
rebecca pepperell91@gmail.com

Modbury Silver Threads Over 60s Group

Tues 2nd & 16th June, 1:45pm to 4:00pm
Modbury Social Club

Cards—Bingo—Quiz

All old and new members welcome

All enquiries to
Zena 830923 Liz 830313

SOUTH HAMS MOBILE LIBRARY



Saturday 6th June
Poundwell Square 09:30 to 12:30

Tuesday June 16
Ayleston Park 14:45 to 15:30
Poundwell Square 15:35 to 16:35

walk&talk

New walk dates:-

9th June and 23rd June
14th July and 28th July
11th and 25th August

Contact Modbury Volunteer walk
leaders

Sue Rogers (831289)
Sandra Sidey (830582)
Jenny Pannell (83006)

Andy Sloper 01392 263674
Walking for Health Lead for Active
Devon



South Hams
District Council



ramblers
Supporting you to
get active and stay active

Holbeton Film Club

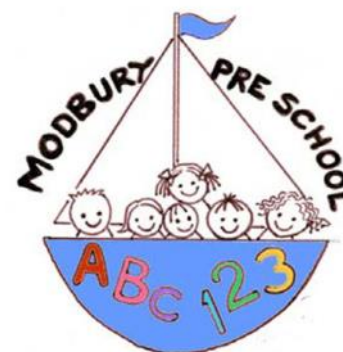
June's film is **The Imitation Game**, with a **12A certificate**. Based on the real life story of legendary Alan Turing, the film portrays the nail-biting race against time by Turing and his brilliant team of code-breakers at Bletchley Park, during the darkest days of World War II.

This is showing on **Friday 12th June** in Holbeton Village Hall. Doors open as usual at 7pm. Programme starts 7:30pm. Tickets £4 on the door. Don't miss this great film! As usual tea, coffee and ice creams will be on sale. There is no bar, but you are welcome to bring your own alcohol if you wish.



Modbury Pre-School, Barracks Road

Open 9am-3.30pm Mon-Fri, during term time.
For children 2 - 4 years. Toddler sessions on a
Thursday afternoon 1-3.30pm. Please contact
us for more information or to discuss your needs.
The preschool also operates a breakfast,
afterschool and holiday club for 3-11 year olds.



www.modbury-preschool.org modburypreschool@hotmail.co.uk 01548 831477

MAY FAIR WALKS



The Walks traditionally start the May Fair programme and this year was no exception. The weather forecast in the run up was not encouraging but fortunately, on the day, conditions were not too bad, a little low cloud, a few minor showers and even some sun.

In spite of the weather, we count this year's event a great success. We were delighted to have 122 people taking part (a 30% increase on last year) with 7 taking up the 14 mile major challenge and what was really encouraging was the number of young families out walking. The children's walk, which included an 'inventions' treasure hunt, was very popular and we presented certificates to the 24 children who completed it.

There was a great atmosphere in the Pavilion, with returning walkers comparing their experiences, excited children waiting for their certificates and several people just coming to join in and enjoy a delicious cream tea. The queue for Teas almost overwhelmed the Modbury Society Ladies at times and the desperate cry for extra supplies often heard! But they coped and managed to serve everyone. A record of around 150 teas were produced and happily consumed!!!

We have the Norman Fuzland Memorial Cup in our gift. Each year this is awarded to a person or group who have achieved something special associated with the walks. It has been given to youngsters and older people who walked distances most of us would never consider attempting, and one exceptional year it was presented to a blind lady for completing one of our set walks. This year we chose to award it to the lady stalwarts from the Modbury Society, who turn up every year to provide Cream Teas and who this year coped with an unprecedented number, without 'turning a hair'. Many thanks to Mesdames Nicky Shepley, Margaret Barnett, Burda Gage, Judith Pratt and Naomi Ainsley for this, to Chas Hearnden for his invaluable assistance, to Ann Oakins for arranging the quiz and finally, well done to all of you who completed the walks,

Mike Oakins and Brian Weeks
Modbury P3 Co-ordinators



The club members' sessions for this season are Thursday evenings at 6.00pm and Sunday mornings at 9.30am. Membership enquiries to modburytennisclub@btinternet.com or Telephone Paul Eden on 01548 831064

Rockshop



Fridays
Modbury School Hall

Mad Games ~ Messy Craft ~ Big Screen DVD's

Bring a friend
10p entrance ~ **anyone** over 8 years welcome

A Christian youth group which has been running absolutely ages (that's probably 40 years)

Call David and Karen 01548 831589 or Simon 830857

Devon Rural Archive

The Devon Rural Archive is a unique local resource dedicated to promoting a greater understanding of Devon's domestic rural architecture and associated landscapes.

Thursday 4th June, 7pm DRA, Shilstone

A History of Dartmoor Farming

by Colin Pearse
£5, Booking advisable

Tuesday 9th, 2pm DRA Shilstone

Guided Tour of Shilstone

by Abi Gray
£15, including a cream tea. Booking essential.

Tuesday 23rd June, 11am—3pm
Picture Day

Help preserve the history of this county for future generations and bring in your photos of Devon's buildings and landscapes to be scanned and added to the DRA Image Bank .

The Devon Rural Archive,
Shilstone, Modbury PL21 0TW
Tel 01548 830832 office@dra.uk.net

Curry Evening at Queen Elizabeth Pavilion on Fri 5th June 7 for 7.30pm

You may have seen "the Spice Girls" at the May Fair market, just back from a trip to the Himalayas where they helped out in the school built and supported by Modbury folk. If you would like to hear their story and see some pictures, come and enjoy a curry made from their Indian spices. (There will be an English alternative for those who are not curry fans - and puddings). There is no charge but please book in advance. As always, any donations towards the ongoing work of the school would be appreciated.

Contact kathymilthorp@gmail.com 830416



Many thanks for the support given to us at the Modbury Fair Market, we raised just over £200.00 for the Poppy Appeal.



The Royal
British Legion
Modbury
Branch

Next Branch meeting will take place on June 1st at 7.30pm in the Modbury Club. New members welcome. **David Mitchell.**

400th Anniversary of the Baptism of Robert Stetson Thursday 18th June, 2pm, St George's Church

Robert Stetson was born in Modbury, baptised in 1615 and later married his wife, Honour Tucker, at St George's Church. In the unrest preceding the English Civil War they emigrated to America where he founded a dynasty at Scituate Plymouth Colony. One of his descendants, John B Stetson founded the Stetson hat company in the USA and co-founded a University. The "Stetson Kindred of America" have regularly sent a donation to St George's Church.

A seventh generation descendant is sending a Stetson hat for display and is coming to visit later in the year.



'A restaurant with heart'
Tom Parker Bowles

Serving an abundance of the freshest, locally caught seafood around, 12- 9pm daily.

Join us for our up coming Shack Fishing Trips!

11th July & 15th August
Setting sail from Salcombe £195pp

Check out our website for news, menus & events,
including our

Six Course Tasting Menu with Wine Pairings

Take Home Menu | Picnics | Party Bookings | BBQ Chests
Take Away Wine Menu | Gift Vouchers | Fishmonger Menu

01548 810876 | Bigbury TQ7 4BE

www.oystershack.co.uk | bigbury@oystershack.co.uk





The Breakfast Club & Business Chamber



This has to be one of the most unusual photos in the Modbury Calendar as instead of traditional Devon farm animals – there are alpacas! Although it looks as if the sheep and the alpacas are in the same field, in fact the sheep are on one side of the Ayleston Brook and the alpacas on the other. The sun is shining, the animals are resting, a perfect image of a June day. Thank you to Elen Williams for a great photograph. Be sure to be taking your best shots to enter into the 2016 calendar!

Annabelle Gregory's painting depicts the allotments in Modbury and the predominant colour green gives you the impression that there is a veritable cornucopia of every kind of vegetable there. It really brings the allotments to life.

Chris Duff - The Thatches Holiday Village

Last month we interviewed Chris Duff, Manager of The Thatches Holiday Village. It was interesting to find out how someone who has travelled the world found his way to Modbury!

When did the travel bug start?

I had the travel bug for roughly 20 years, starting in 1978 when I left Manchester. I had an amazing time and lived in Canada and the Americas (I loved Central America) until I moved to London in 1999.

After travelling so much have you a favourite place?

Of all the places I've been, the one that struck me as the most beautiful was the Falkland Islands. There's something romantic about the feeling of space, quietness, rolling hills and even the wind, it's so different from anywhere else. I also liked Ascension



Island which is warmer and more tropical than the Falklands.

What was it like coming back?

I finished my 22 years in the Army, and stayed on as a Recruitment Officer, which gave me a chance to get involved with the local communities in London. It was such a good experience integrating with different cultures and religions and I found a particular respect for the Sikh community who are very peaceful and giving. I once took Liz, my wife, out for a surprise lunch at the Sikh Temple as they feed everyone. It was not quite what she was expecting, but she did enjoy it! In London I recruited people from all walks of life, and gained valuable experience dealing with the general public, and large organisations, which has helped me in my present job.

So how did you come to Modbury?

I'm a great believer in fate and luckily for me, my in-laws owned a lodge at The Thatches. The owners were looking for a manager, and I was in the right place at the right time! Within a year the McFarland Leisure Partnership purchased the site and they kept me on.

Is it quite a large place to manage?

There are about 80 lodges in the park and we have a mixed clientele of semi retired, retired people and young families. My job, along with Becky Haywood and the rest of the staff, is to make sure everything runs smoothly. The homes are only occupied part of the

year. Once the grass is cut, the TV working and there is parking for everyone, most people are happy. One customer said he wasn't worried if his lodge burnt down as long as the grass was cut!

If you won the lottery?

I'd travel the world, especially South Africa, with Liz, my wife who is my unsung hero and does so much for me.

What are you most proud of?

I am very proud of my achievements in the Army. I joined as a private soldier at 21 and left as a WO1. I was awarded The Commander Recruiting Commendation Award when I was a Recruiting Officer in Central London.

Hidden talents?

I was a great climber and abseiled quite a bit. I used to arrange fund raising events abseiling or climbing for the National Blind Society and I took a group of 15 people to climb Mont Blanc. Only a few made it, not because of the climbing, but because of the altitude sickness!

Join us for Breakfast!
Every Thursday 8.15 till 9am
at the Lazy Cow
Friendly advice, business
chat and great ideas.
New faces always welcome

Join our 600+ followers. Search **Modbury News** on Facebook

David West - Royal Marines Helicopter Instructor

David was brought up in Modbury and joined the Royal Marines in 1978. Having completed his Commando Training, he joined 42 Commando RM as a rifleman based at Bickleigh Barracks. He has lived in Modbury for most of his career, when not deployed on exercises or operations around the world.

Why did you become a pilot?

I was on a night troop insertion flight in Norway when we hit a set of high tension power cables. We were lucky to walk away and at that point I realised I wanted to be the one in control of the aircraft. I was selected after completing the aptitude tests for pilot training at the School of Army Aviation at Middle Wallop and awarded my Pilot's Wings in 1989. I joined 3 Commando Brigade Air Squadron RM based in Somerset. I later became a qualified helicopter instructor teaching pilots how to fly and operate the aircraft in a tactical environment.

Have you been on many operations?

I have seen my share - my first major operation was the Falklands in 1982 and I have taken part in most operations since then.

Most exhilarating moments?

I think flying a Lynx Anti Tank helicopter at 10ft over the Iraqi desert at 150 miles per hour, in support of the troops during the battle for Basra during Gulf War 2.

Can you tell us about the most rewarding time?

I think that must be flying a Sea King as the Aircraft Commander of the Immediate Response Team again in Iraq. Our job was to get the medical team to the scene of an incident as quickly as possible. We could be airborne in five minutes during the day and the fastest scramble at night that my crew achieved was 12 minutes. I remember one incident when we were called to the scene of an IED explosion, which had left a soldier with very bad head injuries. The medical team needed to get him to the hospital as quickly as possible, so we had to battle through a sand storm to get him there, we were airborne for four hours in support of the incident. The good news was that the individual survived.

So what have been the most emotional moments in your career?

That would be leaving my family to deploy on operations and also the homecomings. The return to the UK



after the Falklands will always stick in my mind as it was a very public affair. Also my return from the Iraq war when Jo and the children were waiting for me at the main gate at RNAS Yeovilton. To see them running towards me as I got off the bus is still vivid in my mind, especially as it was 3 o'clock in the morning.

What are your plans for the future?

Well, I have just less than two years to serve to finish my commission and then I will need to get a proper job!



The Modbury Barrow Market

The May Fair street market was a perfect time for a guest appearance of the barrow market - due to re launch in June. Wonderful produce was on sale and it promises some great market days for the summer months. To find out more contact Trish Berry by email at trish.berry@gmail.com or come along to Breakfast Club on a Thursday morning.



Speed Networking Event

Last month Breakfast Club ran a Business Speed Networking evening. The idea is to make a lot of new contacts in a short time. You have a minute to present your business or line of work to another person, then hear about them before moving on. Business cards are exchanged, advice given, experiences shared. The atmosphere is very friendly and it is great to have the opportunity to present your ideas to a relative stranger to see how they are received. We hope everyone who attended made new contacts.

ARCHITECTURAL DESIGN & SERVICES
contact Jon & Emily Sullivan to discuss your requirements further

- Planning Applications
- Building Regulations
- On Site Supervision

arb
Architects Registration Board



NEST DESIGN

28 Galpin Street, Modbury, Devon, PL21 0QA
www.nestdesignstudio.co.uk 01548 830409



**IT'S FOR YOU – WHY NOT USE IT?
MARS SPORTS AND COMMUNITY FACILITY**

We now have a fully equipped community facility on the Recreation Ground – including a large multi-purpose Events Room for up to 60 people, catering facilities, sport changing rooms and showers, disabled facilities and access, plus extensive free parking.

- Extremely competitive hire rates
- Ideal for children's parties and private social events
- Choir/band practice
- Training and meeting events
- Keep Fit, Yoga, Pilates classes
- Art classes etc.

Check availability/rates, book online or contact us at:
www.marsport.org

We have a fantastic, fun timetable of free events for families with children up to the age of 5 years

For full details please visit:
www.southhamschildrenscentres.org.uk



SeaMoor



A Sure Start Children's Centre



Town Hall, Erme Court, Leonards Rd
Ivybridge, PL21 0SZ 01752 896356



Traditional Butcher, Farm Shop & Cafe

You will be surprised just what we do!

Providing local produce. Beef, Pork, Lamb & Poultry for the retail & catering trade.
Delicatessen, Fresh Fruit & Veg, Vintage Style Café

**Free Local
Delivery available**

Rake Farm, Loddiswell & 6 Church Street, Modbury

Loddiswell: 01548 550413 | Café: 01548 559126 / Modbury: 01548 830240

www.aunevalley.com

Marchand Petit

ESTATE AGENTS

www.marchandpetit.co.uk



**Specialists in coastal and country houses holiday cottages
and apartments. For any property related help and advice
Please contact us on
01548 831163**

email: modbury@marchandpetit.co.uk

Dartmouth
01803 839190

Kingsbridge
01548 857588

Modbury
01548 831163

Newton Ferrers
01752 873311

Salcombe
01548 844473

Totnes
01803 847979

London
0870 1127099



IVYBRIDGE U3A

The June General Meeting of Ivybridge U3A will be held at the Watermark Centre on Monday 15th June at 2pm. The speaker will be Vicky Norman on "Lady Astor—Sunshine of Plymouth".

KINGSBRIDGE U3A

Monthly meeting on Friday 26th June, contact the membership secretary for further details. Membership Sec: Judy Tyler judyatyler@icloud.com

MODBURY FRUIT & PRODUCE SHOW 2015

Yes folks, it's that time of year again to give a thought to your exhibits for the 111th Modbury Show. As usual the show takes place on the last Saturday of July the date this year is Saturday 25th July at Modbury Memorial Hall. The schedules will be available in the shops about six weeks before the show date.

Once again I ask everyone to do a little something in the form of an entry perhaps painting, drawing, cooking, an item of knitting, sewing, pot plant, any fruit or vegetables or flowers, floral art - come on have a go.

Calling the children of Modbury to consider doing an entry as there are several classes to choose from.



As requested by many parents the committee have split the children's classes into age groups. We have pre school age, 4-7yrs 8-11yrs 12-15yrs. The committee hope this is a better spread for the ability of the children in the age groups.

Modbury School will be giving us another surprise this year with their exhibit as we have no idea what they will be doing. Their exhibit last year of the flags of the world really filled the hall with a blaze of colour.

Come on lets make this a really good show.
A Peters, Show Secretary

The Green Corner



We've had some beautiful visitors in the garden recently – a pair of bullfinches - a particularly handsome male with a relatively dull wife, and a small flock of brightly coloured goldfinches. They were nibbling seeds and buds from the plentiful dandelions and daisies which are a special feature of the grass around the house. Saturday morning, and I thoughtlessly got the lawn mower out to make the garden look respectable, and since then not a single bullfinch or goldfinch has been seen. A difficult choice – wildlife or a stripy lawn? Put weed killer on your grass and you get rid of a whole range of nectar producing plants that bumble bees thrive on.

And who doesn't like butterflies? But they started off as pesky caterpillars, possible eating the lettuces you've just planted out. You could use an insecticide spray which would get rid of caterpillars, blackfly, greenfly, and er – ladybirds, hover flies and bees

Particularly as we live in a beautiful rural area, interfering with nature is more of a balancing act. The blackbirds we feed in the winter repay us by eating every cherry on the tree just before they are ripe to pick. Pretty baby bunny rabbits turn into carrot munching thieving rodents. But they were here long before we moved into their field. So come back Mr Fox, as long as you don't eat the neighbour's hens. My new espalier apple tree strangely lost all of its apples last autumn and a very guilty looking deer was later spotted lurking in the brambles. We provide nesting places for swallows which devour huge numbers of flies through the summer but we are then rewarded with heaps of guano on the floor.

We are all part of nature, and are going to influence it, but hopefully with consideration for the unintended side effects. And don't even mention genetically modified food crops **Jeff Booth**



Modbury Local History Society

SUMMER OUTING MORWELLHAM JULY 2nd

Last month we published details of the trip to MORWELLHAM. The departure time will be 9.30am. The cost of £22.00 will include the coach from Modbury, entry to Morwellham and a ride on the Mine Train.

At the time of writing this report only 4 members have entered their names on the booking form in the Modbury Post Office. PLEASE put your names on the list if you intend to go - you do not have to be a member of the Society—everyone welcome. We have ordered a coach and hope that at least 25 people will be able to come. Please let me know if you have any queries. Telephone 830446.

David Mitchell

FOOTBALL ROUND-UP from MODBURY ROVERS JUNIOR FOOTBALL CLUB



It is with great sadness that we learned of the sudden death of Jim Petford on Friday 8th May. Jim has devoted countless hours to the maintenance of the facilities at the recreation field for many years. The Junior Club first became established in 2007 and we have been aware since that time of Jim's tireless efforts in his numerous roles – mowing, linemarking, general maintenance, car park attendant – and more recently as caretaker of the new Pavilion. He was very much the 'face of the recreation field' with a welcome, cheery smile for all users of the facility. He will be sorely missed and the club would like to pass on our sincere and heartfelt condolences to his wife, Stella.

The end of the season is now with us and the club would like to thank all those who continue to support us. We are extremely proud of the achievements and endeavour of our teams this past season:

Under 15s

A very positive season and finished a close 5th in their league with Jack Eades scoring his 50th goal in the dying minutes of our final game. The boys have come a long way over the last three seasons which is a testament to the fact that they have 'stuck with it' and grown in confidence, ability and strength. Well done boys, our coach Lee and thank you to our parents for your continued support.

Under 13s

Individual players and the team have progressed hugely this season both in terms of skill and physicality. It has been rewarding to watch a team develop an unselfish passing game, turning defence into attack with speed and intent. With at least third place guaranteed, this Sunday's final match against Dawlish sees us playing for a second place finish and promotion. All 18 players in the squad should be enormously proud of themselves and their achievements.

Under 11s

The continued dedication and endeavour of players and parents has been fantastic. There have been clear challenges this season in terms of numbers and provision of coaching. As a club we are looking to address these issues, and past experience of our two older teams gives us every reason to believe that 'where there's a will there's a way'. Thank you to our parents and players for their unwavering support.

Under 9s

From Paul (coach): "the team have worked really well this season. The younger players especially have "dug deep" and this has reflected in some great results, more so in the latter part of the season. We have a superb foundation to build on and I look forward to taking them when the new season begins. As you know, we are still looking for new talent to bolster the squad, so spread the word to friends, family etc. WELL DONE EVERYONE and that includes the parents who have supported this team from start to finish. I myself appreciate your loyal support and am also very thankful to those who have helped out with reffing, nets goals etc. "

Under 8s:

In order to continue to provide for this age group we will need to identify a coach to take them forward, organise friendlies and ensure that their training needs are met. Please consider whether you are able to or know of anyone who can step into this role. Many thanks.

Once again, please spread the word to all football enthusiasts out there as we seek to boost our numbers of both players and coaches.

We look forward to continued success next season.

For further details of the club please phone Eileen on 07752 886307 or email modburyroversjfc@hotmail.com

Eileen Berry



MODBURY NEIGHBOURHOOD PLAN

Thanks to all of you who came and talked to us about the Neighbourhood Plan at the May Fair Street Market on May 9th. This was the start of the consultation process, gathering views and ideas from the community about the longer term future of Modbury Parish. All the opinions and suggestions put forward will be included in the information we are collecting for the developing Neighbourhood Plan. Thanks to those of you who gave us your contact details. We have put you on our distribution list.

A key requirement in producing a plan is that every effort has been made to consult as widely as possible with the community. This takes time to do thoroughly. We will be holding a series of events and informal meetings throughout the year at which we hope to see as many people as possible.

We are keen that this process remains open and that people can join the core plan group to contribute to particular topics where they have interest or experience. It isn't necessary to commit to a "forever" attendance! Our regular meetings are on the **second Wednesday** of the month **at 8.15 pm** and are now held at the **Exeter Inn**. Forthcoming meetings will focus on plans to meet with different sections of the community, so please come along if you would like to contribute! We still need a Treasurer. If you feel that role is for you, please contact us via the details below or come to the next meeting.

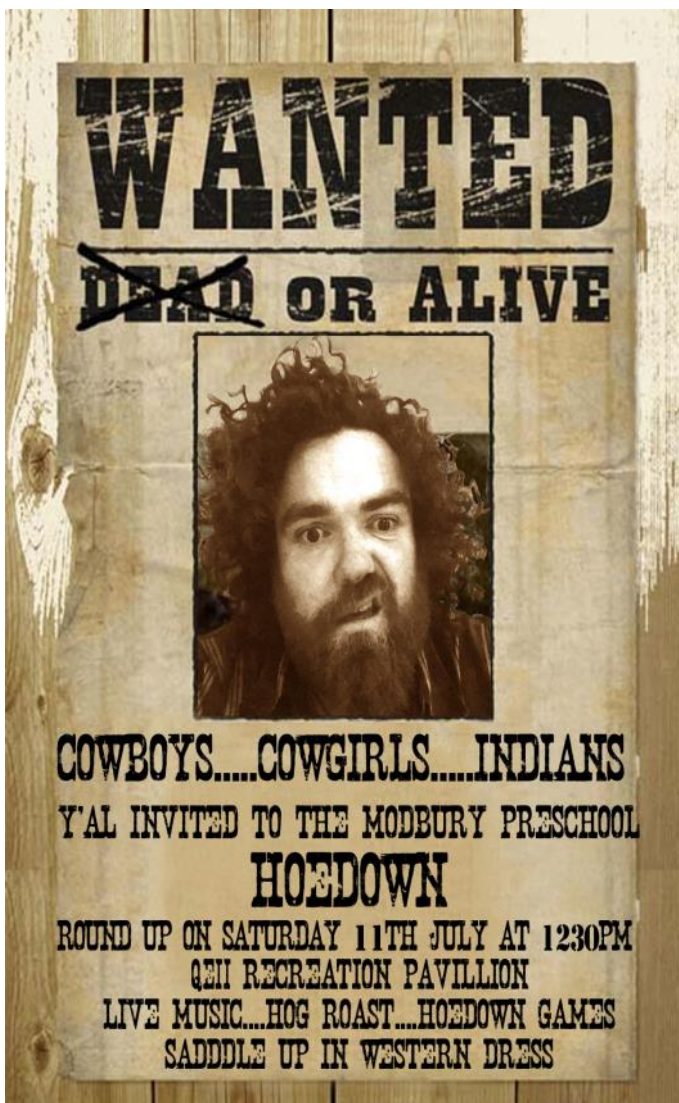
Forthcoming events:

Modbury School Hall, Friday May 22nd at 2.45. Particularly for parents of primary and pre-school children.

The White Hart, Saturday June 6th, 10.00-12.30. Public consultation meeting.

Ann Turner – Chair Neighbourhood Plan Group

modburyneighbourhoodplan@hotmail.com



Modbury Barrow Market



After a successful start to the season at the Modbury Fair, the Modbury Barrow Market will be running on Saturday mornings from June to September outside the Lazy Cow, Poundwell.

- Local Produce
- Arts
- Crafts
- Charity Stalls

For more details and to book a barrow contact:

Trish Berry at trishberry@gmail.com

G H W Rosevear & Co

Chartered Secretaries and
Incorporated Financial Accountants

We specialise in the following services:

Accountancy and Taxation
Probate and Inheritance Tax (IHT)
Company Secretarial Services
Legal Support Services
Property Management

We can also provide you with Book-keeping,
Payroll Services and VAT Returns

Office Hours

G H W Rosevear & Co
3, Modbury Court, 32 Church Street
Modbury, Ivybridge, Devon, PL21 0QR

9¹⁵ a.m. - 6 p.m.
Monday - Friday
Weekends by appointment

Tel: 01548 831427
Fax: 01548 830977
Email: george@holbrookass.com
www.accountantsouthdevon.co.uk

BISTRO 35

35. Church Street. Modbury

Art Room at the Bistro
Next Life Class at the Bistro
19th June 10:30 - 1pm
Booking essential

Sunday Roast
From 6pm, starting June 7th
2 courses £12. Children £6
Veg option
Booking advisable

Phone: 01548 831273

Opening Times
Mondays—closed
Tuesday to Friday 6pm-11pm
Saturday 6pm-Midnight



MARTIN LEY
PLUMBING & HEATING

- Oil Installations,
Servicing & Repairs
- Unvented Cylinders
- Bathrooms & Showers
- General Plumbing

Tel: Modbury 01548 830609
Mobile: 07811 934551

Rest Assured Laundry

New Mills Business Park, Modbury

**Collection & Delivery
Service Available**

Duvets : Bed Linen : Table Linen : Pillows
: Blankets : Towels : Curtains

01548 831488 / 07722294060

www.restassuredproperties.co.uk



MR BUILDER CO.

A friendly, honest
and reliable service, covering all
aspects of the building trade.
Fully insured and guaranteed.

Transforming any part of your home,
'from foundation to decoration'

Office: 01548 831303 (Modbury)
Mr Builder James: 07825 214368
Mr Builder Paul: 07974 508947

jamesandpaul@mrbuilderco.com

MICHAEL HAGGER

**Professional Interior
& Exterior Painter
& Decorator.**

Friendly and reliable, trained to City &
Guilds advanced craft level with
32years experience.



Lankwells Farm
Burraton
Ermington

Tel: 01752881438.
Or 07977445521.

Free
Estimates & References.



LEARN TO SEW
Workshop at Hulu



3 Lessons starting
Friday 26th June
10am-12pm
For absolute beginners!

Sentinel House, Poundwell, Modbury
Call us on 01548 831911

Advance Notice

Modbury Friends of St Luke's invite you to
celebrate the 150th Anniversary of Alice in
Wonderland.

There will be a family "Mad Hatter's Tea Party"
2-5pm Sunday 12th July
at 22 Galpin Street (Sarah Wyatt's house)

Tea and Cakes, Plants for Sale,
Fun and Games in the Garden
Raffle



- **Need a lift to a medical appointment?**
- **Need a friend for support and companionship?**
- **We are there for you, covering Modbury and the outlying villages.**

Modbury Caring is a charity based at Modbury Health Centre to help patients.

To book transport, telephone the Health Centre on 01548 830666

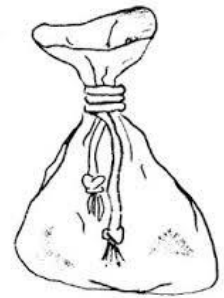
To contact Sheila Harrison, our Befriending Co-ordinator, Telephone 07554 997140 or email modburycaring@gmail.com or

'Drop in' to see Sheila on Wednesdays from 10 -11am at the Modbury Parish Office, Galpin Street
The befriending service can provide regular visits and some assistance to those who are isolated and/or living alone.

Modbury Carers need more volunteer drivers, if you feel you can help, please ring Michael Tagent on 810520 to discuss how you could help.

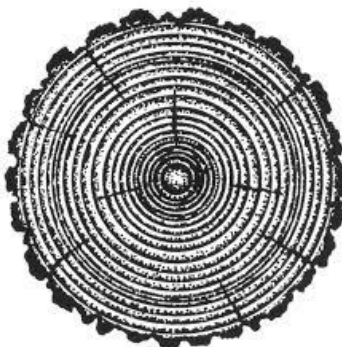
Modbury School Report

Phil the Bag is back and we are collecting until the end of June. Please drop off all your old material – any quality and condition – it all gets recycled. All those odd socks you've cherished in the hope of finding its pair, ripped sheets, stained shirts – stick them all in the bag, tie them up and we'll chuck it on the lorry. Or even better if you've got an old bag you don't want put it all in there, along with old belts, shoe laces, smelly trainers – the more the better (just no carpet, duvets or pillows please).

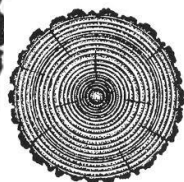


It's such a good cause and helps people in developing countries while reducing landfill. Modbury School gets paid for every tonne and the money will be put towards our new outdoor learning area.

If you need to know more or you need someone to collect for you please call Clare Hagger on 01752 881438.



Talking of our new outdoor learning area, we're so excited that year two teacher, Catherine Pemberton, is leading this initiative which will only enhance children's learning. A horseshoe-style bank planted with trees to provide shade and logs for seats so that children can come and learn outdoors are some of the things being planned. We're fund raising to create this wonderful area that will make outdoor learning fun.



If you have any log rounds, plants or top soil that you would be happy to donate please do get in touch with the school. Telephone 01548 831477.

Vote for Modbury with the Aviva Community Fund

Modbury is a small town that has lost out to our neighbouring larger towns for years in terms of facilities and funding. This project builds on the Town's track record for self-help, initiative and determination to ensure our community and the surrounding countryside is properly supported.

MARS have a funding bid in with Aviva and it needs as many votes as we can possibly get, please use the link below, register, an email will be sent to you to activate the registration once this is done you can vote and you are entitled to 10 votes each this can be done with just one visit to the site.

<https://community-fund.aviva.co.uk/voting/project/view/596/>

Advertising in the Modbury Messenger

The cost of producing the Modbury Messenger is supported by the advertisers. We would like to thank our advertisers and encourage our readers to support their local businesses.

If you would like to advertise your business or an event in the Modbury Messenger, please contact the Modbury Parish Clerk at the Parish Office at 1 Galpin Street, 01548 830222 or by e-mailing parishclerk@modburypc.co.uk.

Adverts can be a one off insertion, for a number of months or for a full year. Please note the Messenger is not published in August. Advertising copy should be sent in jpg or pdf format. Prices include VAT

SIZE	1 INSERTION		3 – 10 INSERTIONS (Per insertion)		11 INSERTIONS (Per insertion)	
	Black	Colour	Black	Colour	Black	Colour
1/8 th page	£15.00	£30.00	£13.00	£26.00	£8.00	£16.00
1/4 th page	£30.00	£60.00	£25.00	£50.00	£15.00	£30.00
1/2 page	£60.00	£120.00	£48.00	£96.00	£27.00	£54.00
1 page	£120.00	£240.00	£92.00	£184.00	£50.00	£100.00

THE STANBOROUGH
CHORUS
presents

Charity No: 1084313
<http://stanboroughchorus.blogspot.co.uk>

"SUMMER MELODIES"

Opera Choruses and Arias

An evening of song to entertain & delight you

A Summer Supper Concert

An evening not to be missed!

Director of Music : Christopher Fletcher

Accompanist : Irina Kosogova

Supper served from 6:45pm

Saturday, 13th June 2015 ~ 7:30pm

Malborough Village Hall

Tickets: £12 ADVANCE ONLY

Get your tickets early...avoid disappointment!

Available from:

Kingsbridge Information Centre

Salcombe Information Centre

May Crimp 01548 842361

Tom Gilkes 01548 560973

Chorus Members



Robyn Dylan (ARPS)

Professional and Experienced
Photographer specialising in
Natural Photography.

- * Weddings
- * Civil Partnerships
- * Informal portraiture
- * Celebrations
- * Pet/Animal Portraits.

Business and Corporate enquiries welcome.

Giclee prints and canvasses of this
beautiful area (and beyond) available
to purchase.

For more information, please visit:

www.robbyndylan.co.uk

Tel: 01548 811 112

Email: robbyndylan@btinternet.com

Follow me on facebook: Robyn Dylan Photography.



Pauline Young Hairdressing Modbury

The salon experience at mobile prices

25% DISCOUNT FOR ALL NEW CLIENTS

Tel: 07796 184301

www.gchqhair.com

4 Galpin Street, Modbury, PL21 0QA



WILLS & PROBATE LASTING POWERS OF ATTORNEY

PRE-PAID FUNERAL PLANS

FREE Home call services for OVER 60's

Over 60's
Specialists



David Richardson

HOME PROTECTION TRUSTS

David Says: *A Home Protection Trust gives all the following advantages:*

- Immediate protection for your home from all unforeseen eventualities
- Saves Probate costs which can be substantial
- Saves waiting months for probate to deal with your property
- Makes things simpler for your beneficiaries after your death

Telephone for a **Free Home Protection information leaflet**

* Richardsons Legal Services are a friendly local firm, fully insured, qualified, regulated, and give FREE consultations. *



RICHARDSONS
LEGAL SERVICES
PROTECTING YOUR ASSETS

TEL: 0800 014 8031

Free from any BT line | www.rls-uk.com

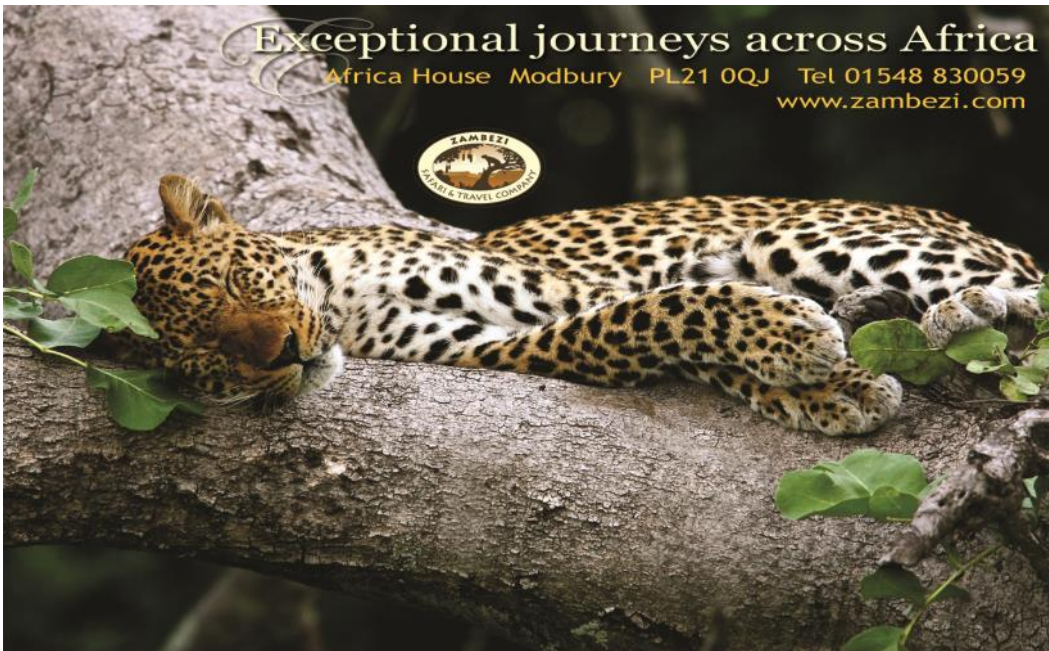


Plymouth City Council Trading
Standards Approved

Exceptional journeys across Africa

Africa House Modbury PL21 0QJ Tel 01548 830059

www.zambezi.com



THE PICKWICK INN

WWW.PICKWICK-INN.CO.UK | 01548 810310
ST ANNS CHAPEL, BIGBURY, NR KINGSBRIDGE, TQ7 4HQ

STEAK NIGHT
EVERY WEDNESDAY FROM 5:30 - 9:30PM

2 DELICIOUS STEAKS & BOTTLE OF HOUSE WINE

- £27.95 -



BIGBURY GOLF CLUB



MEMBERSHIP OPTIONS TO SUIT ALL LIFESTYLES
FULL MEMBERSHIP STARTS AT UNDER £5 PER WEEK
PLEASE CALL IN ADVANCE AND BRING THIS
ADVERT TO CLAIM A **FREE** ROUND OF
GOLF FOR TWO AND MEET OUR TEAM



Telephone: 01548 810557 | www.bigburygolfclub.co.uk

- GREAT VALUE DELICIOUS SUNDAY LUNCHES
- SOCIAL MEMBERSHIP - ONLY £35 PA



Roscoff - Derek Holland

DEREK HOLLAND

18 June - 4 July

the **brownston** gallery

36 Church Street, Modbury, Devon PL21 0QR tel - 01548 831338

www.thebrownstongallery.co.uk