



illustration - Les Howard

for the people of Modbury - Best Kept Large Village 2013

issue number 192, volume 15 March 2015

ORGANISERS of the Modbury Mayfair are hoping the theme for this year will prompt some exciting entrants for the annual carnival procession.

Under the banner of "Great Inventions" competitors are encouraged to let their imaginations run riot to illustrate some great ideas from history; from morse code to email and from the wheel to the aeroplane.

The inspiration has been taken from famous former residents of Modbury parish such as Thomas Savery, one of the early pioneers of the steam engine and also the Stetson family, creators of the famous cowboy hat. The procession, on Saturday, May 9, has two classes; motorized, which includes trucks trailers, milk floats and motorbikes; and pedestrians, who can be on foot, with a pram, wheel-barrow, push bike or even a horse!

Judging begins at 3.15pm and the winning entry for the motorized class will receive £50. For the best pedestrian entrant first prize is £25. Entry forms are available in the Mayfair programme. All money collected at the carnival is distributed to organizations within the community.



Road Marshalls: More marshalls for the carnival procession are still needed. If you can help please contact Paul Romney on paul.romney415@btinternet.com

Help and Ideas: The Mayfair committee is made up of a group of people who give up their time to make sure the event is as successful as possible for the benefit of our town. Offers of help, ideas, help delivering programmes and general muscle power is ALWAYS welcome. If you can supply any of the above please contact secretary Guy Thomas on guy.thomas@mercedes-benzsouthwest.co.uk

Market: Organisers are keen to tap into untapped local talent so if you make, bake, build, knit, up-cycle or recycle why not join the Mayfair Market? It's a fabulous opportunity to showcase local skills. It will take place as usual on the morning of Saturday, May 9 from 08.30 to 13.00 and this year it will also be joined by the Modbury Barrow Market and Pop up Art featuring a selection of Modbury artists. All stalls and barrows are £5. Half stall available. For details contact Fiona on 01548 830023 or for a barrow call Trish on 0779 6863513.

Bunting: Any contributions/ loans of bunting to make sure Modbury looks its festive best will be very gratefully received. These can be dropped at Pickles or the Lazy Cow

We have a few changes to be brought to your attention this month:

The Natwest Mobile Bank visit to Poundwell Car Park has stopped and you may have noticed that the mobile library has returned to Saturday as well as Tuesday visits.(page 2)

More good news , a new Editor for the Messenger has been appointed.

Her name is Lynn Barnes and she will take up the reins in April. She will be working closely with members of the Parish Council to ensure the Modbury Messenger continues to bring you all the news, views, advertising and significant notices of our inclusive town.

Congatulations Lynne, thank you for volunteering !

Please continue with your contributions as before, we anticipate a seamless transition, and no change of email address.

Thankyou everyone for your patience and kindness to me during my 3 year stint as editor. I have really enjoyed the experience. Goodbye! Ed.

District Council News.

District Council.

At its meeting on 29 January 2015, the Executive recommended to the Council that the Council Tax for 2015/16 should be 'frozen'..... watch this space!

2. Owners of empty homes throughout South Hams are being urged to bring their properties back to life. For further information, or to inform the Council about an empty property, town and parish councils are asked to call Environmental Health on 01803 861234 or via email environmentalhealth@southhams.gov.uk. This will be a great way to bring more homes back in to use for people to live in.

3. Having spent the last four months setting up the neighbourhood plan process for Modbury I have now completed the passing on of the chair role to Ann Turner. Neighbourhood planning is a new process and a democratic tool for enabling communities to shape their future – looking ahead to 2031 and beyond. Next meeting is 11th March at 8.15. The area designation of Modbury Parish consultation is due to end on 18th February. If you are a young or a student getting involved with neighbourhood planning may be good for your CV and also Modbury needs your views. If you would like to be involved then please contact the parish office and visit the web page. Thame, Eden and Tattonhall are really good case study examples!

4. Finally, a note about dementia and Erme Remind project..... It would be great to make more local businesses dementia aware. I have a really helpful information sheet to help you and your staff more dementia aware so you can understand more about the needs of people in our community. You can display a dementia aware logo in your business once read and understood. Just ask if you want a copy or I might drop one off any way.....Meanwhile, thanks to the Exeter Inn for hosting a quiz, to Zena and Liz who organised it and to all those who took part. Well done to all! We raised £160 for Dementia UK. Don't forget the Shared Reading Project every Thursday in the Pavilion for people with memory loss - 10.30 in the Pavilion.

Cllr Lindsay Ward

Member for Erme Valley Ward

Executive Lead for Support Services South Hams District Council

01548 831078

Cllr.LWard@southhams.gov.uk

Parish Council News.

Parish Council.

Palm Cross development proposals. Over 60 people attended the exhibition in January of Bloor's plans for the site and left comments and questions for the meeting with SHDC, DCC and Bloor at the PC meeting on the 9th Feb. At this meeting it was standing room only with again about 60 attendees, many of them younger members of the community who are interested in seeing houses built in Modbury that they can afford.

By the time you read this the PC will have met to make its formal observations on the development to SHDC. It is their Development Management Committee which will eventually take the decision based on their officer's report and following a site visit. The PC is only one of many consultees and all comments can be seen on the SHDC website. **NB. Some revised plans concerning highways have been submitted and are on the SHDC website. They show the removal of the bus stops and the pavement by the school following DCC comments. The closing date for comments has been extended to March 6th.**

One thing that was made clear to all by Dave Kenyon, Major Projects Manager at SHDC, was that the principle of development on this site has already been accepted, following a public inquiry in 2010. The 2011 Rural Areas Development Plan Document proposed "about 50 houses by 2016 and about 30 houses after 2016" together with 1 hectare of employment land.

Possible reduction in bus services. Devon CC have just started a consultation on whether they should continue to subsidise certain bus routes. They are proposing to remove the 93 bus on summer Sundays and Bank Holidays. Also to reduce the Fare Car F7 service to Saturdays only. The consultation ends on 20th April and you can make comments at <https://new.devon.gov.uk/publictransportbudget/>

Mark Lawrence

Parish Council elections, May 7th.

See notice on page 4. A "quality" Parish Council is one where there are elections for the councillors. If there are insufficient people standing (less than 12) then individuals will be co-opted or, at a significant cost to Modbury Parish Council, the election will be re-run in June. The Parish Clerk has information on what it means to be a councillor, or you can speak to one of the present councillors.

Mark Lawrence.

Around the churches



St. Monica's
Roman Catholic Church
St Austin 's Priory
01752 892606
Sundays
8.45 am Mass
Everyone Welcome

The Kingsbridge Estuary Decorative and Fine Arts Society.



A Personal Heaven – the Paintings of Stanley Spencer
Valerie Woodgate

Methodist Church, 100, Fore Street, Kingsbridge.

25th March - 7 for 7.30pm
 26th March - 10 for 10.30am

**S
t
G
e
o
r
g
e
,
s
C
h
u
r
c
h**

SOUP LUNCH

& mini bazaar

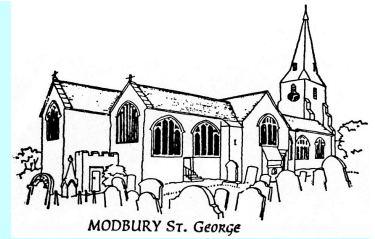
Saturday March 14th

12.00-2.00PM

IN THE CHURCH

Come and enjoy good company and delicious soup and bread, followed by tea or coffee and something sweet.

IF YOU REQUIRE TRANSPORT PLEASE RING RACHEL TAYLOR 830021



St George's Parish Church, Modbury

Services and Events in March

Sunday 1st	9.30am	Holy Communion
Thursday 5th	9.15am	Noah's Ark
Sunday 8th	8.00am	Holy Communion
	9.30am	Family Service
Thursday 12th	9.30am	Holy Communion
Saturday 14th	12 noon	Lent Lunch in St George's
Sunday 15th	9.30am	Family Communion with Sunday Club
Thursday 19th	9.30am	Noah's Ark with Preschool
	7.30pm	Modbury PCC
Sunday 22nd	10.30am	Team Service at Loddiswell
Thursday 26th	9.30am	Holy Communion
Sunday 29th	8.00 am	Holy Communion
	9.30am	Sunday Worship
Thursday 2nd April	9.15am	Noah's Ark

Connecting people to God.

St George's and St Andrew's are open every day for prayer



A Contemporary, Café style evening service

Sunday 22nd March at 6pm

St George's Church, Modbury

All welcome. Refreshments.

Parish Council Page.

ANNUAL PARISH MEETING

The Annual Parish meeting will take place on Monday 13th April, 6.30PM in the Memorial Hall. Local organisations are invited to give a brief report at the meeting. Further details to follow.

SOUTH HAMS MOBILE LIBRARY



The Mobile Library will be at the following locations in March

Saturday 14th.

Poundwell Square 9.30 am-12.30 pm

& TUESDAY 24th

Ayleston Park 14.45 pm – 15.30 pm

Poundwell Square 15.35 pm – 16.35 pm

YOUR TOWN NEEDS YOU!

In May there will be vacancies on Modbury Parish Council. Local councils are delivering more services for residents that ever before, and are in a position to do even more in the future. Councillors take an active role in influencing what services are and are not provided, and are consulted on nearly everything that happens within their communities. These decisions affect the lives of people who live and work here. If you would like the opportunity to represent the community and be actively involved in shaping the future of Modbury Parish please do contact any of the current councillors or the clerk to find out what opportunities this rewarding role offers.

For background papers take a look at our website:

<http://www.modburypc.co.uk/parish-council/about-the-parish-council/>

Calling all enterprising women; do you have the ideas but need help to start or grow your business?

Help is at hand with the Women Led Enterprise (WLE) programme, from Devon Communities Together. This project enables networks of like-minded rural business women to connect, learn and share their experiences. For FREE networking and training events, Register your place at [http://](http://www.devoncommunities.org.uk/Event/women-led-enterprise-networking-and-training-events)

www.devoncommunities.org.uk/Event/women-led-enterprise-networking-and-training-events.

SOUTH HAMS DISTRICT COUNCILLORS

Lindsay Ward – 831078
Cllr.LWard@southhams.gov.uk

Tom Holway
tomholway@lineone.net

DEVON COUNTY COUNCILLOR

richard.hosking@devon.gov.uk
tel: 01752 690775

MODBURY PARISH COUNCIL OFFICE.

2 Galpin Street
Modbury PL21 0QA
Tel: 01548 830222

parishclerk@modburypc.co.uk

Hours of Business-

Mondays 9.00am – 1.00pm

Parish Surgery

10 – 11 am every Saturday

Planning Applications

Notices of planning applications lodged with SHDC are displayed on the Parish Noticeboard outside the Post Office. Copies of plans relating to these applications can be inspected at the Parish Office during above office hours.

Contacting Parish Councillors

Parish Councillors attend the Parish Office, on a rota basis, on Saturday mornings from 10.00 - 11.00am. Should you have any parish matter you would like to discuss come along to the Office or call in to the Office and speak to the Parish Clerk, Sally Walsh. Alternatively you can write a letter or speak at the public forum held at the beginning of each monthly meeting of the Parish Council, on the second Monday of each month at 7.15pm in the Pavilion, QE11 Leisure Centre.

MESSENGER CLOSING DATE

*For April edition is 10th.
March 2015*

Please send all copy, by e-mail to modburymessenger@live.co.uk.

Payment for all advertisements must be made in advance. Cheques should be made payable to 'Modbury Parish Council' and sent to The Parish Office.

For advertising tariff info please email

parishclerk@modburypc.co.uk or tel 01548 830222

For further information please contact Sally Walsh on 01548 830222 (Monday mornings – or leave a message).

The Modbury Messenger is published by The Modbury Parish Council and is printed by Hardy Print, Ivybridge.

The views expressed in the Messenger do not necessarily represent those of Parish Council.

PERSONAL ANNOUNCEMENTS.
(Births, Deaths, Marriages, Thanks etc) £5 per insertion - max. 50 words
(Subject to available space)

The Editorial Committee reserve the right to précis/abbreviate any copy submitted for inclusion in the Messenger.

The contents of the Modbury Messenger may not be reproduced in any form without the prior written permission of Modbury Parish Council

Local Adverts

**ARE YOU PAYING TOO MUCH TAX ?
ARE YOU GETTING VALUE FOR MONEY FROM
ACCOUNTING SERVICES ?**

*For a free confidential review, and a service second to none
contact :*

MARTIN RANWELL, FCA

ELLIOTT & PARTNERS

Chartered Accountants

Tuckers Brook House, Modbury, Devon PL21 0UT
Tel 01548 830452

e-mail: ranwell@modbury2.eclipse.co.uk
www.elliottpartners.co.uk

**EXTENSIVE EXPERIENCE IN BOTH THE PROFESSION AND
COMMERCIAL MANAGEMENT**
IRIS (iXBRL compliant) and Sage software
PROPERTY MANAGEMENT SERVICES

KINGSBRIDGE EYE CARE GROUP

Nigel Frost Optometrist 3, Chene Court, Modbury 01548 830944

Clinical Excellence

Full Eye Health Examinations
Contact Lens Specialist
Eye Examination Packages
OCT screening packages
Diabetic and Glaucoma Examinations
Retinal Photography
Luxury Designer Brands

Kingsbridge Eye Care
1, The Promenade
Kingsbridge
01548 856854

Salcombe Eye Care
84, Fore Street
Salcombe
01548 843207

www.kingsbridgeeyecare.co.uk



Tel- 01364 72418 Mobile- 07710453118
www.srplumbingheating.co.uk

- LPG & Natural Gas • Plumbing • Heating
- Oil • Boiler Service and Repair • Bathroom
- Underfloor Heating • Domestic Electrical Installer
- All Work Guaranteed • Modbury Based Engineer



LOCAL DOMESTIC ELECTRICIAN

- ✓ Installations, Cookers, showers, fans, inside and outside lights
- ✓ Alterations / additions / sockets / rewiring / Earth bonding
- ✓ Consumer Units – no better price fitted
- ✓ No job too large or too small
- ✓ Honest and reliable service
- ✓ PAT (portable appliance testing) inc certificate

All work guaranteed/ certified
Fully insured / qualified & registered with NICEIC

- Call **Phil** for a free, no obligation quote or callout; **Tel: 01548 859041**
- Mob: **07769 840012** email: lightworkselectrics@gmail.com

Local Adverts.

solereflexions
for mind, body & spirit



I am an Ingham Qualified, Fully Insured Reflexologist who can offer treatments at either my rural treatment room just outside **Modbury**, within the comfort of your own home and now also available at **Fifth Sense** in Modbury.

So why not call me today to see how reflexology may help you.

Gift Vouchers available Gift Vouchers available

Bridget Thomas, *MAR IIR*
Tel: Modbury 01548 831629
Mob: 07973 506083




Frenchy's Beauty

Your Local Mobile Beauty
Therapist & Nail Technician in
the Modbury area

Contact Victoria on:
07432 643900
www.frenchysbeauty.co.uk

OFFERING SALON TREATMENTS
IN THE COMFORT OF YOUR
OWN HOME

...relax & feel pampered

**MODBURY MAY FAIR
ROAD CLOSURES
ROAD TRAFFIC
REGULATION ACT 1984
SECTION 16A
THE COUNTY OF DEVON
TEMPORARY
PROHIBITION OF
THROUGH TRAFFIC**

NOTICE is hereby given that Devon County Council has made the above titled order.

No person shall cause or permit any vehicle to proceed on the sections of Affected Roads except for access to land or premises on or adjacent to those length of roads.

Monday 4th May
May Fair Opening Ceremony
Poundwell Short Stay car park
closed from 0800 - 1400
1415-1430 & 1440-1455
Town Centre (Palm Cross Green
- Galpin St), Brownston Street,
Dark Lane,
Barracks Lane closed to all
traffic - Modbury Mile Road
Races

Saturday 9th May 1500 -
1700*
Town Centre (Palm Cross Green
- Galpin St) 1600-1630
Brownston Street, 1600 - 1700
Dark Lane, Barracks Lane 1600-
1610 / 1630 - 1700
Carnival Parade

*Barracks Lane closed between
Palm Cross Green and Long
Park from 1500

Friday 8th May 1800 -
Saturday 9th May 1300
Poundwell Short Stay Car Park
closed for May Fair Market.
Access to Poundwell from 0700
on Saturday via Church Lane &
Bunker Hill only

*Materia Aromatica
&
Fifth Sense*

Come and browse
our large range of organic essential oils, skin
care products, soaps and accessories,
our wide variety of products made of natural,
organic and fair-trade materials,
our fine display of arts and crafts created by
local artists and businesses.

If you wish to pamper yourself, we also offer
a range of treatments by our team of
qualified and experienced therapists,
from Massage & Reflexology
to Homeopathy & Bowen Therapy
and more ...

Ring 01548 831671 to make an appointment or
just walk in on the spur of the moment.
5 Church Street, Modbury, PL21 0QW

HARDY PRINT

DO YOU HAVE A NEED FOR
**HIGH QUALITY
LOW COST PRINTING ?
THEN WE CAN HELP YOU**

FLYERS, POSTERS, BROCHURES, BOOKLETS
& MUCH MORE

HIGHLY COMPETITIVE COSTS,
AMAZING TURNAROUND !
DESIGN SERVICE AVAILABLE

WE CAN ALSO OFFER, WEBSITE DEVELOPMENT,
MAILING SERVICES, MARKETING CONSULTANCY,
SEARCH ENGINE OPTIMISATION
AND PUBLISHING SERVICES.

LET US KNOW WHAT YOU WANT TO DO

CONTACT JON HARDY
07801 238859
OR
jon.hardy@btconnect.com

LOCATED IN IVYBRIDGE
FOR A VERY PERSONAL SERVICE

AQUA

HAIR DESIGN
Modbury
Unisex Experienced Stylists

7, Modbury Court
Church Street
01548 831260

Modbury Physio

Sue May, a local physiotherapist with many years' experience now offering private physiotherapy

Based at Modbury Osteopathic Clinic Monday (Coppers Corner - The old police house on the Plymouth Road) Monday pm and Thursday am

If you would like to make an appointment or discuss if physiotherapy is for you, please contact us on:

07980 922273 or modburyphysio@yahoo.com

Modbury Societies.





**Retired or no longer working full time?
Keen to meet people, learn new things, have new experiences?**

IVYBRIDGE U3A
could be just what you are looking for!

**The next General Meeting will be at
THE WATERMARK, Ivybridge on
Monday 16th March 2.00pm – 4.00pm**

Speaker: Lorna Howell



Lukesland

New and potential members welcome.
The U3A offers a wide range of interest groups for you to join including Walking, Gardens, Dartmoor Archaeology, Etymology, Bridge, Tai Chi, Local History – and many more.

See our website for full details www.ivybridge-u3a.org.uk
Or email ivybridge.u3a@gmail.com
Or phone 01752 892772

SOUTH HAMS SOCIETY – BEACH CLEANS .



Why not join members of the South Hams Society for a beach clean, at Gara, on **Saturday 7 March**? You will be made very welcome. Meet at the Lookout Cafe, at 12 noon. It is a relatively arduous walk to the beach and back. The hotel has improved the steps to the beach but it is still a tricky climb, so be warned. However, the views more than compensate. We leave the rubbish near the top of the beach close to the fence. The local farmer collects it in his four-wheel drive. The next beach clean is scheduled for South Milton 4 April For more information on beach cleans please contact Vivien Napper, t: 01548 842405 e:viv@rathlyn.eclipse.co.uk or visit the South Hams Society website at <http://www.southhamsociety.org>

walk&talk

New dates:
10th March and 24th March
14th April and 28th April
12th May and 26th May
9th June and 23rd June

Contact Modbury Volunteer walk leaders
Sue Rogers 01548 831289

Sandra Sidey 01548 830582

Jenny Pannell 01548 830062

Andy Sloper - Walking for Health lead for Active Devon 01392 263674



South Hams District Council



walking for health



WE AGE MACMILLAN. CANCER SUPPORT



ramblers

Supporting you to get active and stay active


Modbury Silver Threads over 60s group.

Tuesday 10th, Tuesday 24th

Meeting at 1.45 until 4.00 pm

All old and new members welcome

All enquiries to Liz 830313 Zena 830923




MODBURY LOCAL HISTORY SOCIETY

An impressive number turned up for the talk on Feb. 11th, in spite of the cold weather, to hear Stewart Linton from Plymouth speaking on the subject of the CANBERRA, the aeroplane not the liner. Stewart was a pilot for 10 years on the CANBERRA and he explained how the aircraft was first planned and built in the early 1940s which played an important part in the Second World War. We were shown some photographs of the various modifications made over the years and Stewart explained how the aircraft was used for aerial photography during the war and since. The next talk will take place on March 11th, by Chris Robinson the Plymouth Historian, his subject will be "PLYMOUTH IN THE 40's & 50's " 7.30pm the White Hart. **David Mitchell.**

The next general meeting will take place on 30th MARCH, in the Modbury Club, at 7.30pm.

New members welcome. you do not have to be ex-service.

David Mitchell.



The Royal British Legion Modbury Branch



The Breakfast Club & Business Chamber



Modbury Photo Calendar 2015 - March by Jacqui Thorns

Whilst walking her dog Jacqui Thorns passed this spot in Church Lane and luckily for us decided to photograph it. What attracted her to the image was the bench being cushioned by the bluebells with the original pavement in front - the contrast of colours is wonderful.

On the front of the Messenger, Les Howard's artwork complements Jacqui's photo beautifully. Les was walking his dog on the Ridge Road and came upon a couple of Hares "squaring up" and instantly had the inspiration for his illustration of the March Hares.

Meet Alice Carter-Tyler from SWLaw Solicitors...

Alice spent the first part of her life living abroad in countries such as Gibraltar, Russia and France before coming to Dartington, Devon in 1999 and then moving to Modbury in 2008. She says "I have been impressed by the strong community life here. I am lucky to live in such a special part of the world nestled between the sea and the moors".

Alice is a regular face at the Business Breakfast Club and she is part of the SWDevon Networking Group.

When did you join SWLaw Solicitors?

I joined SWLaw Solicitors in November 2013 and I work as a trainee solicitor within the Private Client Department. Since March 2014 I have been volunteering as a co-ordinator of the SWDevon Networking group which takes place on the third Friday of the month at The Watermark in Ivybridge. One of the charities I know is dear to many people in Modbury, is Devon Air Ambulance. SWLaw Solicitors have agreed to support this charity by offering a charity Will scheme for the month of May. During this month, the firm will discount all wills by £150 making the less complex ones free. In return, we will be asking those taking advantage of this offer to make a donation to Devon Air Ambulance. For further information or to make an appointment please get in contact with me.

What helps you get through your working day?

The interesting people that I work with both as colleagues and clients. The area I specialise in is very rewarding in being able to assist people organise their affairs and plan for their and their family's futures.

Is there something you're especially proud of?

I am particularly proud of raising money for local charities. In recent years, I have taken part in regular musical events to raise money for St Luke's Hospice, while at SWLaw we recently raised £3,500 during November as part of the Will Aid charity will scheme.

What are your secret skills?

I enjoy making sushi! In my spare time I enjoy surfing, walks exploring our beautiful coastline and playing my 'cello.



NEST DESIGN

ARCHITECTURAL DESIGN & SERVICES

Contact Jon & Emily Sullivan

- Planning Applications
- Building Regulations
- On Site Supervision

28 Galpin Street, Modbury
www.nestdesignstudio.co.uk
01548 830409

Dates for the Diary

24th February

An evening at The Oyster Shack with dinner and a talk by owner Chris Yandell.

5th March

Business Chat at the Bistro 6-7pm

April

Speed Networking Event at The White Hart

Join us for Breakfast

Last three Thursdays of the month at the Lazy Cow, 8.15-9am. Coffee, tea cakes and ideas!

We get to know Councillor Lindsay Ward

Lindsay Ward has lived in Modbury for 23 years. Originally from Liverpool, she moved here from the South East. Trevor and Lindsay were married in St. George's Church in July 1993. Her parents soon followed and enjoyed 15 happy years of retirement.

Lindsay says: "I first came to Modbury in the early 1970s and never forgot it. We came to the South Hams for our holidays every year and I decided I would move here as soon as I could. It is a privilege to live here."

Tell me about your career

I had a 25 year career in education which took me as far afield as Kuwait and gave me the experience in a range of roles in many different types of school and context. Working with young people was great fun and I do so miss the jokes! I gave up working full time a couple of years ago when my Dad was too ill to care for himself.

I have been a district councillor for the last four years. This is a really exciting role and one which I have really enjoyed. I feel blessed to have the opportunity to be able to work with lots of different groups to solve community issues and bring in new ideas and hopefully make the area an even better place. I don't have a business but I really admire people who have the courage and tenacity to set up



something which creates wealth and provides jobs. The business base in this area is really interesting and I enjoy learning about all the different enterprise. I admire people who are prepared to take a risk and give it a go.

Have you got any anecdotes?

Last May Zena and Liz from Silver Threads came to an event I organised at the QE2 Pavilion. It featured Norman McNamara a 57 year old man who was diagnosed with dementia at 50. He is a fabulous speaker and provides a great insight into his condition and is an inspiration to many. Liz and Zena held a quiz in the Exeter Inn to raise money for Dementia UK. The event raised £160 and we were

very grateful to the many people who took part. It was great to see how one event could lead to another.

What are you most proud of?

I have a great husband who supports me so well and I am especially proud of my son Jon and lately of his interest in music. He plays guitar and has performed live a few times now. He has extremely eclectic tastes in music but more sophisticated than mine. His Dad and I laugh when we hear Paganini coming down from upstairs while we are downstairs with Teenage Kicks (do you remember the Undertones?).

Have you any special interests?

My favourite sport is Formula One and I hardly miss a race. I was a James Hunt fan at school and recently enjoyed the film Rush about his rivalry with Nikki Lauder. I am proud of the fact that so much of Formula One is based on British creativity, engineering and sheer dare! I also like to cook and I make a lot of ice cream. My last recipe was for chestnut ice cream using the sweet chestnut puree from Mackgills.

Do you have a secret skill? When I lived in Kuwait I was taught how to belly dance. I did once perform to a large open air crowd in Istanbul but that was a long time ago..... !

A Smashing time with Jules Wileman

Jules grew up in Ryarsh, a small village in Kent, where she spent her summers picking strawberries. She left home for the bright lights of Liverpool to study Social Science, then headed for the brighter lights of London, where she lived for 12 years. Her first job was working for London Transport which evolved into a 25 year career in Transport Planning. Jules has worked all over the country and moved to Modbury six years ago to take up a job with Plymouth City Council.

When did you start your business?

Six months ago "I gave up the day job" to set up my business Vintage Poppy, which is all about bringing new life back to unloved and discarded crockery. It had been a hobby of mine for the last eighteen months, after I went on a short mosaic course. Last summer I took a wheelbarrow down to a few of the Barrow Markets and when people who weren't my friends bought some of my mosaics, it made me feel that perhaps I could make a go of it. I've been sat at the kitchen table ever since smashing plates and then sticking them back together again!

What helps you get through your working day?

Whilst I enjoyed what I did before I absolutely love what I do now and there don't seem to be enough hours in the day. Motivation is not a problem! In my spare time I love to walk the coastal path, laze on the beach, bake cakes and potter in the garden.

Have you had any interesting commissions?

I'm currently working on a commission for a woman who dropped a bowl that had huge sentimental value to her as it has the footprint of her baby boy on it. It was in too many pieces to stick it back together so she asked me to make a mosaic from it. I have also made a mosaic heart for a couple's wedding anniversary, made out of a chipped plate from the dinner service they received as a wedding present.

What are you especially proud of?

I am really pleased to have sold some of my mosaics at Ringrose, as well as through my online shop www.vintagepoppy.co.uk

Interesting anecdote!

When I was younger I used to collect plastic carrier bags and have approximately 2,200 neatly stored and catalogued in my loft. How ironic then in later life that I move to Modbury where I have no use for them whatsoever!



Join our 500+ followers. Search **Modbury News** on Facebook

Local Adverts.



Pauline Young
Hairdressing Modbury
The salon experience at mobile prices

25% DISCOUNT FOR ALL NEW CLIENTS

Tel: 07796 184301 www.gchqhair.com
 4 Galpin Street, Modbury, PL21 0QA



RLS
WILLS & PROBATE
LASTING POWERS OF ATTORNEY
 PRE-PAID FUNERAL PLANS
 FREE Home call services for OVER 60's

Over 60's Specialists

HOME PROTECTION TRUSTS
 David Says: *A Home Protection Trust gives all the following advantages:*

- Immediate protection for your home from all unforeseen eventualities
- Saves Probate costs which can be substantial
- Saves waiting months for probate to deal with your property
- Makes things simpler for your beneficiaries after your death

Telephone for a **Free Home Protection information leaflet**
 * Richardsons Legal Services are a friendly local firm, fully insured, qualified, regulated, and give FREE consultations. *

RLS RICHARDSONS LEGAL SERVICES
 PROTECTING YOUR ASSETS

TEL: 0800 014 8031
 Free from any BT line | www.rls-uk.com

BUY WITH CONFIDENCE
 Plymouth City Council Trading Standards Approved



Exceptional journeys across Africa
 Africa House Modbury PL21 0QJ Tel 01548 830059
www.zambezi.com

ZAMBEZI SAFARI & TRAVEL COMPANY

Pre-School & School Report etc.

Modbury Preschool Dates for your diary:
Please come to our singalong 'Frozen' dvd party!

Friday, March 6

at 4:00pm - 6:00pm

The Sports Pavilion Queen Elizabeth II
Recreation Field Chatwell Lane PL21
0FS

For £4 a ticket enjoy a hotdog, drink, popcorn and a frozen lolly whilst singing along to the fabulous 'Frozen' movie.

You must be accompanied by a grownup, pre-schooler siblings welcome too.

Tea and coffee available for the grownups.

You are more than welcome to come dressed in costume.

Tickets are available from the preschool.

**Modbury Preschool and Modbury Tiddlers
Easter Egg Hunt!**

Friday, March 27

at 9:30am

Modbury Memorial Hall

Come and join the fun with all the little bunnies, hunting for yummy chocolate Easter eggs.

If weather bad, we will hunt inside the memorial hall!

Nicolle Evans.

School Report.

So much has been going on at school this term it's been a busy and exciting time for all the children.

Well done those who took part in the Saltash Music Festival. They did so well and we are very proud of them with the results as follows:

Solo Singing Class 1st Eliza
Duets 1st Joely and Amy 2nd

Piano Solo classes 1st – Max, 2nd Iris, 2nd Eliza,
2nd Joely, 3rd Felix

Piano Duets 1st Joely and Felix

Singing Group 1st Truly Twilights (Ellie, Eliza,
Molly, Scarlett)

Ukulele Group 1st – Nathaniel, Molly, Joely, Ellie,
Amy, George

Oil Fuel Poverty Solutions

(OFPS), representing Devon Communities Together, continue to source the best value for money, purchasing in bulk in order to pass on savings to members.



To keep warm and save please call 01993 225011 to join this scheme or email info@ofps.org.uk.

£150m endowment for social enterprises

'The Power To Change' programme, supporting community enterprises has been backed by a huge £150million endowment. This is great news for rural community groups across Devon if you are developing your own enterprises from saving your local shop or pub, to redesigning your library service. Keep an eye out for announcements over the coming weeks as it looks like funding is on the way.

Are you prepared? would like to know how to start, grow and sustain your business then the following workshops are what you have been looking for:

Social Enterprise Workshops:

Intro to Social Enterprise, 10th February 2015, 1pm – 5pm

Sustainable Funding, 26th February 2015, 1pm – 5pm

From Ideas to Enterprise, 19th March, 1pm – 5pm

Funding for Start Up and Growth, 26th March, 1pm – 5pm

All events to be held at Devon Communities Together HQ,
1st Floor, Unit 3 & 4, Cranmere Court, Lustleigh Close, Exeter,
EX2 8PW

Book your place at <http://www.devoncommunities.org.uk/Event/intro-to-social-community-enterprise>

(Contd.)The Farm to Fork trips to Tesco at Lee Mill gave the children a fascinating insight into where their food comes from and how it ends up on their plates. They've been cheese tasting, bread making and proving perfect ambassadors for the school.

Pete Moore from Forest and Beach School at Beeson, near Kingsbridge spent a day with Year 2 building bag gardens and we had also a visit from the Dartmoor Zoo, who brought along a gecko, snake and tortoise and the children learned lots of interesting facts about them.

Before half term an open afternoon allowed parents to pick their children up from class and spend an hour or so exploring the classrooms and seeing what the pupils have been up to. What a great initiative.

Red Nose Day is on March 13 and children will come to school wearing something red. Wouldn't it be great if they entire community of Modbury also dug out their best red attire and wore it for the day! Finally a huge thank you once again to Zoe Thorpe and her team of helpers for organizing another brilliant Live and Local in the memorial hall. Thank you also to all the bands who donated their time free to help raise funds

Local Adverts.

G H W Rosevear & Co

Chartered Secretaries and
Incorporated Financial Accountants

We specialise in the following services:

Accountancy and Taxation
Probate and Inheritance Tax (IHT)
Company Secretarial Services
Legal Support Services
Property Management

We can also provide you with Book-keeping,
Payroll Services and VAT Returns

Office Hours

G H W Rosevear & Co
3, Modbury Court, 32 Church Street
Modbury, Ivybridge, Devon, PL21 0QR

9¹⁵ a.m. - 6 p.m.
Monday - Friday
Weekends by appointment

Tel: 01548 831427
Fax: 01548 830977
Email: george@holbrookass.com
www.accountantsouthdevon.co.uk

BISTRO 35

35. Church Street. Mod-
bury

March 10th

Film night

Shakespeare in Love and meal £8-50.

7pm start

BOOKING ADVISABLE.

ALSO CHESS NIGHT

19thmarch

ALL ABILITIES. START 8pm



MARTIN LEY
PLUMBING & HEATING

- Oil Installations,
Servicing & Repairs
- Unvented Cylinders
- Bathrooms & Showers
- General Plumbing

Tel: Modbury 01548 830609
Mobile: 07811 934551

Rest Assured Laundry

New Mills Business Park, Modbury

Collection & Delivery Service Available

Duvets : Bed Linen : Table Linen : Pillows
: Blankets : Towels : Curtains

01548 831488 / 07722294060

www.restassuredproperties.co.uk



MR BUILDER CO.

A friendly, honest
and reliable service, covering all
aspects of the building trade.
Fully insured and guaranteed.

Transforming any part of your home,
'from foundation to decoration'

Office: 01548 831303 (Modbury)
Mr Builder James: 07825 214368
Mr Builder Paul: 07974 508947

jamesandpaul@mrbuilderco.com

MICHAEL HAGGER

Professional Interior
& Exterior Painter
& Decorator.

Friendly and reliable, trained to City &
Guilds advanced craft level with
32years experience.



Lankwells Farm
Burraton
Ermington

Tel: 01752881438.
Or 07977445521.

Free

Estimates & References.



See & try
our range
of sewing
machines

Yarn • Fabrics • Sewing Machines

Open Mon-Fri 9am - 5pm
Sentinel House, Poundwell, Modbury
Call us on 01548 831911



Spring Timetable Available Online

We have a fantastic, fun timetable of
free events for families with children
up to the age of 5 years

For full details please visit:

www.southhamschildrenscentres.org.uk



SeaMoor



A Sure Start Children's Centre

Town Hall, Erme Court, Leonards Road,
Ivybridge, PL21 0SZ 01752 896356



Local Adverts.

Celebrating our most recent award.



The California Country Inn

~ AND RESTAURANT ~

Situated at the heart of the South Hams renowned for its finest food, while championing the use of local produce and suppliers & awarded local excellence in the area.

Reservations
01548 821449

California Cross, Modbury PL21 0SG
www.californiacountryinn.co.uk



~ DEVON LIFE ~

"Dining Pub of the Year" 2008-10 &
"Devon Chef of the Year" 2009-11



Award Winning Seasonal A la Carte Menu

served from 6pm - 9pm
Wednesday - Sunday

Bar Menu

Monday - Saturday 12 noon - 2pm,
6pm - 9pm
Sunday 6pm - 8.30pm

Traditional Local Sunday Lunch

only **£9.95**
served 12pm - 2.30pm

Every Wednesday is... Posh Fish & Chip Night

Beer Battered Cod, chips and mushy peas and a glass of Prosecco (125ml.)

only **£10**
6 - 9pm every Wednesday

The Government Will Pay YOU To Heat YOUR Home Or Business



Beautiful Biomass From South Hams Energy Experts



Viewings can be arranged of working systems
Fully paid for by Government Incentives*

Free No Obligation Survey.

RHI Tariff cut on April 1st due to high numbers of installations. Get in touch today to guarantee your installation!

Find out how our renewable energy systems can benefit your family home.

Contact Modbury based Energy On The House on **01548 895 219**

info@energyonthehouse.co.uk

*Typical domestic install paid for in around 5 years by the Renewable Heat Incentive.

Local Adverts & Information.

1st Modbury Cub Scouts Present
MAD DOG MCREA



Modbury Memorial Hall
Saturday 18 April 2015
Doors/Bar Open 7.30pm

Tickets £13 Available From Pickles of Modbury
Band Starts at 8pm

Oliver!

BOOK, MUSIC & LYRICS BY LIONEL BART

TUES 24TH - SAT 28TH MARCH 2015
7:30PM EACH EVENING PLUS 2:30PM SATURDAY

MALBOROUGH VILLAGE HALL
LICENSED BAR - RAKED SEATING - AMPLE PARKING

TICKETS £5 - £12

ON SALE ONLINE AT WWW.K&TS.KINGSBRIDGE.CO.UK
OR FROM KINGSBRIDGE INFORMATION CENTRE

This amateur production is presented by special arrangement with
MusicScope and Stage Musicals of New York.

**DON'T FORGET ST LUKE'S RACE
NIGHT**

**7pm on Sat 14th March in the Memo-
rial Hall**



PICKLES

the one-stop shop for home essentials

It's been a busy start to 2015. Apart from the day to day business in the shop, we have been looking at ways to expand our ranges and offer more to our customers.

Fresh as a daisy

We spent a fantastic couple of days trawling the exhibition halls of the Spring Fair trade show at the Birmingham NEC. Exhausted but inspired. To put it into perspective we were reliably informed that if we visited every stand at the show we would have walked 17 miles - our aching feet were testament to this!

However, it was all worth it, we found some great lines and are looking forward to unveiling our new stock in the coming weeks, bringing Spring into your home with our range of 'daisies' and plenty of other bright ideas. Prepare to be impressed.



More treats

Everyone likes a treat every now and again and our Free £5 Gift Voucher proved very popular at Christmas. We are planning more promotions throughout the year.

Delivery

Just to remind you, we offer a free service within Modbury, please ask.

Have your say

We are looking for people of all ages to take part in our customer focus groups planned for later this year. We want to hear what you think about Pickles and how you think we could improve what we do.

If you'd like to join in we would love to hear from you so please contact us and register your interest.

Meanwhile, there are lots of ways to stay in touch with all that's happening at Pickles ...

Talk to us!

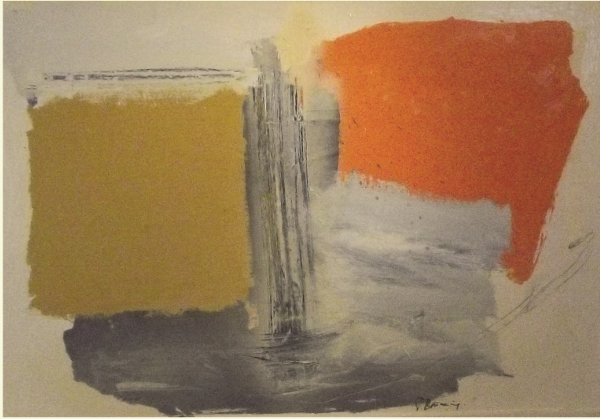


Call us on 01548 830412
www.picklesmodbury.co.uk
shop@picklesofmodbury.co.uk



2 Broad Street, Modbury PL21 0PS

Local Adverts



Jerry Browning

the **brownstongallery**

art ■ prints ■ sculpture ■ jewellery

open late on Thursdays

www.thebrownstongallery.co.uk

36 Church Street, Modbury, Devon PL21 0QR tel - 01548 831338

BIGBURY GOLF CLUB



MEMBERSHIP OPTIONS TO SUIT ALL LIFESTYLES
 FULL MEMBERSHIP STARTS AT UNDER £5 PER WEEK
 PLEASE CALL IN ADVANCE AND BRING THIS
 ADVERT TO CLAIM A **FREE** ROUND OF
 GOLF FOR TWO AND MEET OUR TEAM



Telephone: 01548 810557 | www.bigburygolfclub.co.uk

- GREAT VALUE DELICIOUS SUNDAY LUNCHES
- SOCIAL MEMBERSHIP - ONLY £35 PA



Fresh, local, seafood.

LIVE COOKERY DEMONSTRATIONS

Learn key cooking techniques from The Shack team

11/03/15 - Shellfish Preparation & Cooking Technique

25/03/15 Pastry & Desserts

26/04/15 Seafood BBQ Party

Perfect for gifts, vouchers available.

Tickets are £40 and include a glass of wine on arrival, nibbles during the demo and recipes to take home finishing off with a two course dinner.

Shack Set Menu

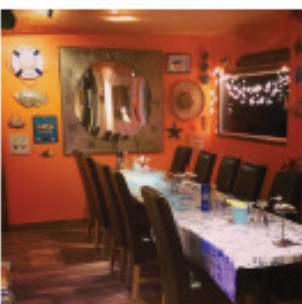
1 Course £10 | 2 for £12 | 3 for £14

Our set menu is back and available 7 days a week for lunch and dinner until 22.05.15.

(Excludes Mother's Day, Easter Holidays 25/03/15 - 19/04/15 & bank holidays.)

01548 810876 | Bigbury TQ7 4BE

www.oystershack.co.uk | bigbury@oystershack.co.uk



Local Adverts.



Traditional Butcher, Farm Shop & Cafe

You will be surprised just what we do!

Providing local produce. Beef, Pork, Lamb & Poultry for the retail & catering trade.
Delicatessen, Fresh Fruit & Veg, Vintage Style Café

**Free Local
Delivery available**

Rake Farm, Loddiswell & 6 Church Street, Modbury

Loddiswell: 01548 550413 | Café: 01548 559126 / Modbury: 01548 830240

www.aunevalleymeat.co.uk

Marchand Petit

ESTATE AGENTS

www.marchandpetit.co.uk



Specialists in coastal and country houses holiday cottages
and apartments. For any property related help and advice

Please contact us on
01548 831163

email: modbury@marchandpetit.co.uk

Dartmouth | **Kingsbridge** | **Modbury** | **Newton Ferrers** | **Salcombe** | **Totnes** | **London**
01803 839190 | 01548 857588 | 01548 831163 | 01752 873311 | 01548 844473 | 01803 847979 | 0870 1127099