

# The Modbury Messenger

Volume 15 Issue 182: February 2014

*for the people of Modbury- Best Kept Large Village 2013.*



Photograph by Les Howard.

20

TWENTY IS PLENTY. Please keep your speed down in Modbury -

20

## MODBURY ACHIEVES "WALKERS ARE WELCOME"

We are delighted to tell you that Modbury has been successful in its application to join three other Devon towns in the Walkers are Welcome UK Towns Network. You will soon see more of the symbol that is in the parish window indicating our membership.

The application was the result of a chamber launched steering group involving the TIC. Joining the network includes making a contribution to local tourism plans, regeneration strategies, promoting the health benefits of walking and increased participation.

We promoted Modbury as an inclusive destination for walkers of all abilities as well as drawing on the heritage interest. It was shown that Modbury is also a place where you can take a walk, shop, enjoy a meal or coffee all from the same car park or bus stop! We were able to do this because of the hard work of groups like P3 maintaining the parish paths and those who support Walk and Talk project. We also had input from local high street businesses and the Modbury Heritage Group. **"Thank you"** to all.

Walkers are Welcome encourages use of public transport through showing how the town can be reached via bus routes. The more people who use the bus network the better for those of us who need to use the bus.

As members we will gain access to exclusive additional information, events and will be promoted through the website. [www.walkersarewelcome.org.uk](http://www.walkersarewelcome.org.uk)  
Lindsay Ward (SHDC and Modbury Parish Council)  
Margaret Middleton (Modbury TIC)  
Jon Sullivan (Modbury and District Business Chamber)

Welcome to the new look Messenger! Thanks to the support of local advertisers we are now printing more pages in colour .

We are grateful to one of our local artists Les Howard, for the beautiful picture above and send a plea for more colour photos of the town, beauty spots or interesting encounters to ensure we keep The Messenger lively, up to date and a true reflection of our vibrant community.

A great big "thankyou" also, to Jeff Booth who took time away from his friends Christian and Anastasia to edit the Messenger in December and January , he then had to escape to Australia to recover!

Modbury Clubs and Groups (page 13) is an invaluable source of local contact and a great illustration of community commitment. On that note please do consider Paul Romney's plea ( page 5) regarding the Modbury Fair- it would be such a pity to lose it. Here's a reminder of last year's race!

**Ed...**





**Where would you like to be in 2014?**  
 Why not treat yourself to something special? Our coach holidays to the UK and Europe are planned by our specialist team with your comfort in mind. In 2014 we could be taking you to The World Heritage city of **London**, the **Gower Peninsula**, the **Loire in France**, **York Moors and Dales**, **Leeds Castle** in Kent, the **Channel Islands**, **Bruges** and many other exciting destinations.

Let us take care of everything so that you can relax and enjoy.

**Call us on 01548 854067 or visit [tallyhoholidays.co.uk](http://tallyhoholidays.co.uk)**

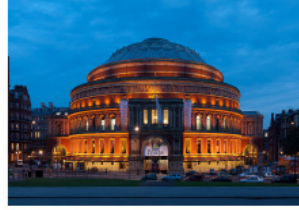


Station Yard Industrial Estate, Kingsbridge, Devon, TQ7 1ES



**Mountbatten Festival of Music**  
 14<sup>th</sup>-16<sup>th</sup> March 2014  
 Guoman Tower Hotel\*\*\*\*

From  
**£225pp\***



Ticket for Mountbatten Festival of Music  
 2 nights full English Bed & Breakfast  
 Time to visit Westminster on Sunday  
 Why not have lunch in Covent Garden?  
 Accompanied by our Tour Manager  
 Travel by Tally Ho Pullman Coach

\*Single supplements may apply



**Tuesday 11<sup>th</sup> and 25<sup>th</sup> February**

Programme available  
**No dogs please**

Contact Sue Rogers Modbury  
 Volunteer walk leader on 01548  
 831289 or  
 Kate Wright Walk and Talk Co-  
 ordinator on 01803 861234,  
[leisure@swdevon.gov.uk](mailto:leisure@swdevon.gov.uk)

**walk&talk**

**MARS 50:50 Lottery - Make 2014 a winning year**

1st Prize £100 2nd Prize £60 3rd Prize £40 (example winnings based on a monthly prize pot of £200) Throughout February a small team from MARS will be knocking on your door and inviting you to join the 50:50 lottery in 2014. In return for a small investment of just £13 for the year, you will be entered into a monthly draw for a period of 12 months. Half monthly subscriptions received make up the prize pot, whilst half of each subscription helps support the new community sports facility at the QEII Recreation Ground. Good luck!



**Marchand Petit**

ESTATE AGENTS

[www.marchandpetit.co.uk](http://www.marchandpetit.co.uk)



Specialists in coastal and country houses holiday cottages  
 and apartments. For any property related help and advice  
 Please contact us on  
**01548 831163**

email: [modbury@marchandpetit.co.uk](mailto:modbury@marchandpetit.co.uk)

**Dartmouth** | **Kingsbridge** | **Modbury** | **Newton Ferrers** | **Salcombe** | **Totnes** | **London**  
 01803 839190 | 01548 857588 | 01548 831163 | 01752 873311 | 01548 844473 | 01803 847979 | 0870 1127099

## Around the churches



**St. Monica's  
Roman Catholic Church**

**St Austin 's Priory**

**01752 892606**

**Sundays**

**8.45 am Mass**



A time of songs, stories and play  
for under 5s - £1 per family



1st & 3rd Thursday of every month from 9.15  
in St George's Church, Modbury

Sunday Children's Club for under 11s  
every 3rd Sunday 9.30

Car Park in Church Lane Contact Helen 830862

## Rockshop 2013



**Fridays  
Modbury School Hall**

Mad Games ~ Messy Craft ~ Big Screen DVD's

Bring a friend  
10p entrance ~ anyone over 8 years welcome

A Christian youth group which has been running absolutely  
ages (that's probably 40 years)

Call David and Karen 01548 831589 or Simon 830857

### St George's Parish Church, Modbury

*Connecting people to God.*

### Services and Events in February

Sunday 2nd	9.30am	Holy Communion
Thursday 6th	9.15am	Noah's Ark
Sunday 9th	8.00am	Holy Communion
	9.30am	Family Service
Tuesday 11th	7.30pm	Magnet meeting at the Vicarage
Thursday 13th	9.30am	Holy Communion
Friday 14th	3pm	Marriage blessing service
Sunday 16th	9.30am	Family Communion with Sunday Club
Thursday 20th	9.15am	Noah's Ark
Sunday 23rd	8.00am	Holy Communion
	9.30am	Morning Prayer
	3pm	Growing leaders at St Andrew's AG
Wednesday 26th	7.30pm	Team Council at St Andrew's AG
Thursday 27th	9.30am	Holy Communion
Sunday 2nd March	9.30am	Holy Communion
Thursday 6th	9.15am	Noah's Ark



MODBURY St. George

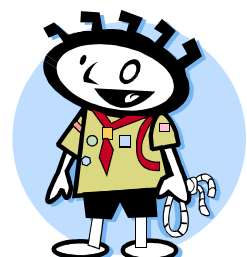
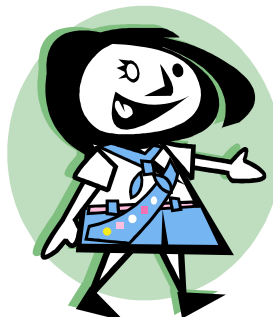
**St George's and St Andrew's are open every day for prayer**

Caroline Barker is part of Pressgang Printmakers which are having an exhibition in the room above the café at Avon Mill.

The exhibition will run from Friday 31<sup>st</sup> January till 4<sup>th</sup> April. So if you are over at Avon Mill enjoying a morning coffee or cream tea, don't forget to pop upstairs and see this exhibition by local artists.

If you were or are a cub scout, brownie or girl guide or a leader of the uniformed organizations, St. George's Church are holding a scout themed Family Service on Feb 9<sup>th</sup> at 9.30am. We hope that as many members of the Modbury uniformed organizations will be there and we are asking them all to bring a photo, for display, of themselves in uniform.

(It could enable us to see friends in a new light !)



# News from the Parish Council

## Parish Clerk

The council was pleased to welcome our new clerk Sally Walsh to the January meeting, who was understudying David Hansford, our outgoing clerk, at this meeting. The councillors all joined the Chairman Peter Watts in showing their appreciation of the work David has done for the town in his time as clerk. David said that he has made many friends here and has 'nearly always' very much enjoyed the work. A small event to mark his retirement will be held for David by the councillors before he officially retires at the end of the month. The contact details for the clerk and the parish office will remain the same.

## Precept

Much of the last meeting was taken up with setting the precept because the finances of the town have changed over the last year. It has been decided to increase the Modbury precept from £23,000 to £25,000 for the financial year 2014/2015. This is because our reserves are now very low and the council wish to maintain services to the same level as have been provided previously. The reserves are low as the council has contributed as agreed towards the building and completion of the new pavilion on the sports field. The building of this has given the town a valuable asset which will benefit many residents for many years into the future, but it means that the council will need to control its finances very carefully over the coming months.

**PCSO** Paul O'Dwyer is now our Police Community Support Officer.

## 20 is plenty

A reminder from our District Councillor that this very much applies to towns such as Modbury where there are built up areas and hazards are easier to see at lower speeds. **Nicky Shepley**, Parish Councillor.

## CHERNOBYL CHARITY SEEKS HOST FAMILIES

Local charity Chernobyl Children's Lifeline is once again welcoming a group of ten children from Belarus this summer and is looking for more host families. The children come from a deprived and contaminated region of the former Soviet republic which is still suffering the effects of the 1986 explosion at the Chernobyl nuclear power plant. A holiday in the South Hams benefits them enormously; they go home after a month of fresh air, healthy food (and a lot of love!) much stronger and more confident. We have met some of the parents of children who have stayed with us in previous years and they have told us that the visit benefited the whole family.

Would you consider hosting two ten-year-olds for two weeks? The dates are 7<sup>th</sup> – 20<sup>th</sup> July and 21<sup>st</sup> July – 4<sup>th</sup> August. During the visit the children are taken on two or three group outings each week (for instance to Woodlands and the Rare Breeds Farm) and parties and barbecues are arranged for them by support families. In previous years hosts have found the experience to be most rewarding and the children delightful and appreciative guests. Language never seems to be a barrier!

If you feel you can help host these children or assist in any way please ring our chairman Sue Wyeth on 01548-821201. More information about the work of Chernobyl Children's Lifeline can be found on our website [www.ccll.org.uk/totnes](http://www.ccll.org.uk/totnes)

Ian McClure

Vice Chairman & Publicity Officer Totnes & South Hams Link Chernobyl Children's Lifeline Tel:01548-830578

## Local News

### MAYFAIR 2014 - CARNIVAL AT CRISIS POINT!

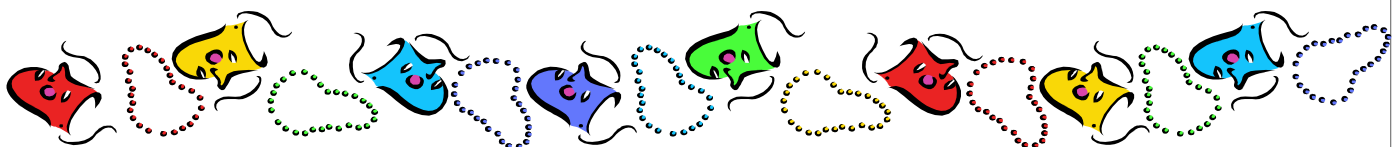
The provisional dates for this year's May Fair are 4th-11th May. I say provisional because following the first planning meeting it is clear we have a couple of large hurdles to overcome before we can declare the Fair for 2014 as 'on'.

After many years of amazing community service, Jane Brown, Pauline Ryder and Claire Hagger are all taking a very well deserved backward step from the coal face of May Fair planning. Whilst we are not losing their expertise and experience completely, they are not going to be leading affairs and consequently two of the Fair's flagship events are now in jeopardy unless we can find some volunteers to take them forward. However, before appealing for assistance I would like to register a massive thank you from Modbury to Pauline, Claire and Jane for their tireless support to the Fair over many years. For anything to be sustained for 42 successive years it is absolutely essential that new people get involved each year and sometimes a small crisis is needed to regenerate this momentum.

So, the 43rd Carnival Parade and Fair's own Royal Family are at risk in 2014. The May King and Queen and their attendants are chosen from within the School Year 6 community resident within the Parish of Modbury, irrespective of which school they attend. Absolutely key to a successful Royal Family is parental involvement in getting royalty to the right place at the right time and in the appropriate attire and crucially aboard the Royal Float for the carnival; with the float prepared in line with the Fair week theme and usually the specific wishes of the Queen and her Ladies in Waiting. A May Queen is an English tradition dating back centuries and has been part of the Modbury Fair since it was first staged in 1329 (that is NOT a misprint). For it to happen in 2014, we absolutely need the commitment and active participation of the wider Royal Family, so please do consider this carefully before registering your child to be considered for the role as the Fair team do not have somebody to do it for you. Registration forms will be available in the next few weeks and the selection process will be detailed in next month's Messenger.

The Carnival needs the support of a small coordination team and leader. This involves identifying and booking bands etc that might be wanted for the parade, advertising the parade and coordinate entries. On the day, this team spends a couple of busy hours handling late entries, ensuring entries are in the appropriate classes, coordinating judging and prize giving and finally organising the parade into some form of order to march off. Traffic marshalling and road closures are all handled by a separate team. So if you don't mind a bit of hassle and bustle and can cope with a crowd of happy people dressed to make you laugh, then we need to hear from you. If we don't have a Carnival coordinating team in place by the next planning meeting in February, then we will be faced with two difficult decisions. First can we run a May Fair without a Carnival Parade and second, if we can't, we will have to cancel plans for a 2014 Fair week.

In the meantime please do give some thought to specific events you would like to see and are prepared to coordinate for Fair Week and pass these details to me, Paul Romney (831126 or paul.romney415@btinternet.com) for inclusion in the programme. If you'd like to get involved with one of the established events then you will be very welcome, be this the Modbury Mile, Fair Market, the P3 Fair walks (who are very keen to encourage more people out onto the paths surrounding the Town), Bingo, BBQs, Pet Show, Live Music etc; we have something for everyone. The next Fair planning meeting is scheduled for Tuesday 11th February, at 7:30pm in the White Hart. We really need to hear from you. ***Paul Romney.***



## Local Adverts & Events.

### Kingsbridge Estuary Design and Fine Arts Society.

Wednesday February 26th - Methodist Church Kingsbridge at 7 for 7.30pm

**The Bayeux Tapestry: An Embroidered Tale - Mark Cottle**

Thursday February 27th - Methodist Church Kingsbridge at 10 for 10.30am

**The Bayeux Tapestry: An Embroidered Tale - Mark Cottle**

No need to be a member, all welcome. Donation towards expenses £8.

### South Hams Mobile Library

**Tuesday 11th & 25th February.**

Aylestone Park 14.45 - 15.30

Poundwell Square 15.35 - 16.35

**Saturday 1st & 15th February**

Poundwell Square 09.30 - 12.30

## KINGSBRIDGE EYE CARE GROUP

**Nigel Frost Optometrist** 3, Chene Court, Modbury 01548 830944

*Clinical Excellence*

Full Eye Health Examinations

Contact Lens Specialist

Eye Examination Packages

OCT screening packages

Diabetic and Glaucoma Examinations

Retinal Photography

Luxury Designer Brands

**Kingsbridge Eye Care**

1, The Promenade

Kingsbridge

01548 856854

**Salcombe Eye Care**

84, Fore Street

Salcombe

01548 843207

[www.kingsbridgeeyecare.co.uk](http://www.kingsbridgeeyecare.co.uk)

## BISTRO 35

**OPEN TUESDAY-SATURDAY**

**6PM-11PM**

**RESTAURANT 6PM-9PM**

**OPEN -SUNDAY**

**4PM-11PM**

**RESTAURANT 6PM-9PM**

\*\*\*\*\*

**FILM NIGHT 11FEB.**

**" Whisky Galore" & food 8.30**

\*\*\*\*\*

**VALENTINE'S NITE 14 FEB.**

**Kim & Dennis Wedding.**

\*\*\*\*\*

**35 Church Street., Modbury.**

**01548 831273**

## OFFICE SPACE

Cautious about expanding? Working from home not working for you?

Friendly media company based in Modbury has more space than it needs - why not come and join us in our bright well-appointed offices?

No long leases, no business rates - just a single, modest, monthly payment.

Walking distance from town centre - but plenty of car parking too.

Call 07767 427666

## Local Adverts



**SR**  
PLUMBING & HEATING

- LPG & Natural Gas
- Oil
- Plumbing
- Heating
- Boiler Service and Repair
- Bathroom Installations
- Domestic Electrical Installer
- All Work Guaranteed
- Modbury Based Engineer







Tel- 01364 72418  
Mobile- 07710453118



**Karen Purdy** ITEC Dip, BM, AR, IHM, DTM, NMT, CThA  
**Massage Therapy**

Aromatherapy • Sports Injury Treatments  
Indian Head and Indian Face Massage  
Hopi Ear Candles

**dermalogica**® Body Treatments

Treatment Room in Ringmore,  
also at Nicholas Hair and  
Beauty in Modbury

01548 810382 • 07968 718901  
mail@karenpurdy.co.uk  
www.karenpurdy.co.uk



**ARE YOU PAYING TOO MUCH TAX ?**  
**ARE YOU GETTING VALUE FOR MONEY ON ACCOUNTING SERVICES ?**  
*For a free confidential review, and a service second to none contact :*

**MARTIN RANWELL, FCA**  
**ELLIOTT & PARTNERS**  
*Chartered Accountants*

Tuckers Brook House, Modbury, Devon PL21 0UT  
Tel 01548 830452  
e-mail: ranwell@modbury2.eclipse.co.uk

**SPECIALISING IN TAXATION SERVICES AND SMALL BUSINESS ACCOUNTS**

*IRIS (iXBRL compliant) and Sage software*

**LEARN TO KNIT GLAMOROUS MITTS workshop at Hulu**

*Saturday 1st March 2014 10am-4pm*

Learn to knit in the round and make a pair of glamorous fingerless mitts.

£45 including lunch




*Booking Essential - limited places!*  
**Yarn, Fabrics and Sewing Machines**

To book or for more information speak to Vicky Perry on 01548 831911 or visit our shop Mon-Fri 9am-5pm

**Modbury Tiddlers**

*A community run group for children aged 0-5 (and for the people who wipe their noses!)*

*Playtime for them  
Coffee and chat for us!*



*Fridays 9.30 - 12 noon  
Modbury Memorial Hall  
£1.50 per child*

*Enquiries ring Nicky on 559172  
or Julia on 830963*




**MARTIN LEY**  
**PLUMBING & HEATING**

- Oil Installations, Servicing & Repairs
- Unvented Cylinders
- Bathrooms & Showers
- General Plumbing

Tel: Modbury 01548 830609  
Mobile: 07811 934551

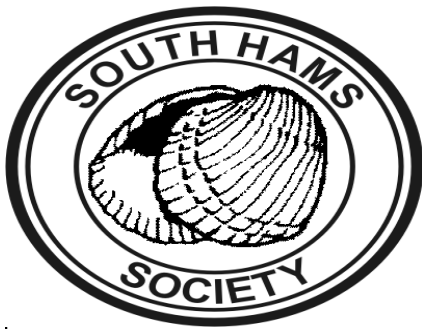


**EDEN TREE & HEDGE CARE**  
**TREE SURGEONS**

- All tree surgery under taken (NPTC Qualified)
- Felling / Reduction / Pruning
- 24 hr call out on trees
- Lawn Mowing / Strimming
- Hedge Cutting & Laying
- Chipping & Chainsaw work
- Logs & woodchip for sale
- Fully Insured to £5 million



**Adam Sloman** t. 01548 830611  
m. 07760 324419



Our Beach Cleans continue every month. The next one will be Saturday 15th February at South Milton at 11.30. Park in the National Trust car park. Depending on the number of volunteers we will aim to clean both the beach and dunes. Hot drinks are generally supplied by the owners of the Beach Cafe if it is open. Low tide 12.22.

For more information: Vivien Napper t; 01548 842405 e; [viv@rathlyn.eclipse.co.uk](mailto:viv@rathlyn.eclipse.co.uk)



Devon Rural Archive.

The DRA will be open every Monday, Tuesday and Thursday from 6th January between 11am and 3pm for private research. There is no need to book and entry is free.

Our next event is on Thursday 6th February at 7pm when Adam Hart-Davis will be giving a talk entitled ' The Eddystone Lighthouses '. Tickets are £5 each and include refreshments from 6.30pm when doors open. Booking is recommended.

**Modbury Caring Befriending Service.**



Following a successful recruitment drive for volunteer befrienders, we

can now accept referrals. Befriending may take many forms, including spending time with someone who is lonely or isolated, there may be a need to help with shopping, a little light gardening or some simple form filling, maybe a carer needs a regular break and a befriender could help fill that gap. Our volunteers are from a variety of backgrounds and a wide age range and our plan is to match the most appropriate volunteer to the individual need. This service is available to all ages and all needs/ requests are considered. Referral forms are available at Modbury Health Centre.

For more information .please contact Gill West, befriending co-ordinator, on [modburycaring@gmail.com](mailto:modburycaring@gmail.com) or on 07554997140. If you are making a referral on behalf of someone else please ensure that you have their permission.



**Communities Supporting Health in the South Hams!**



South Hams Community & Voluntary Services has received an award from the Big Lottery 'Awards for All' programme, to help local organisations provide 'healthy activities' for older people in their communities. Do you have an idea for new healthy activities which will help people, over 50, in your parish? Would you like to help us host a meeting bringing your local groups together to come up with some ideas?

Contact us now, to discuss how we can help and the small grants which may be available to put your ideas into action!

Contact Jill Davies at South Hams Community & Voluntary Services on 01803 862266 for further information contact [jill@southhamscvs.org.uk](mailto:jill@southhamscvs.org.uk)

**NatWest Mobile Bank**  
Is at Poundwell Car Park  
Modbury

**Every Friday:**  
10.30 am- 10.45 am



## Local Adverts

Serving Devon's best seafood for 25 years!!



**HAPPY NEW YEAR 2014!!**

**WE REOPEN ON MONDAY 3<sup>RD</sup> FEBRUARY**

**SHACK FISHMONGER TAKE AWAY MENU NOW AVAILABLE**

**£12 for 2 courses &  
£14 for 3 courses  
is back again until Easter 2014**

**Don't forget Valentines Day!!**

12 to 3pm & 6 to 9pm

7 days a week Closed Sunday evenings Booking is adviseable

[bigbury@oystershack.co.uk](mailto:bigbury@oystershack.co.uk)

01548 810876

[www.oystershack.co.uk](http://www.oystershack.co.uk)

twitter @theoystershack

The  
**California**  
Country Inn  
~ AND RESTAURANT ~

**10%  
OFF**

All food purchases in the Restaurant  
& À la Carte menu.

Wednesday to Sunday evenings only.  
Throughout January, February & March 2014.

(not including Valentines)

For parties of 4 or less.

Telephone: 01548 821449

[www.californiacountryinn.co.uk](http://www.californiacountryinn.co.uk)

The  
**California**  
Country Inn  
~ AND RESTAURANT ~

À la Carte Menu

Wednesday to Sunday evening 6-9 pm

~\*~

Homemade Bar Menu

Monday to Saturday 12-2 pm, 6-9 pm & Sunday Lunch 12-2.30 pm from £9.95

~\*~

Private Meeting & Function Room

Caters for up to 60 people sit down or 150 buffet.

~\*~

Now taking Bookings for Valentines Day

Friday 14th & Saturday 16th evenings only £25.99 pp

Tel: 01548 821449 [www.californiacountryinn.co.uk](http://www.californiacountryinn.co.uk)

# Breakfast CLUB

Issue 6 Brought to you by The Breakfast Club in association with Modbury & District Business Chamber

**Phew! If you are reading this then you have got through January and are almost back to your usual routine. This month we have some more interesting Modbury folk for you to read about – if you are looking for garden inspiration, have a read about the Rathbone Partnership. Planning your dream holiday – Zambezi Travel and Safari can help you get there! Meanwhile plans are afoot for the Modbury Fair 2014 (volunteers always needed!), and the Breakfast Club also has a few exciting projects which we are working on.**

*John and Trish Berry - Zambezi Safari and Travel Company.*



*Above - John and Trish Berry (on the left) with other members of their company*

**Where do you come from?**

John was born in Earls Court, London before emigrating with his parents by ship, to enjoy a free range, organic upbringing in South Africa. I was born on a tobacco and cattle farm in Zimbabwe (Rhodesia), enjoying a typically colonial lifestyle including being at boarding school from 6 yrs old.

**Why did you move to Modbury?**

In April 2000 political upheaval caused us to move overnight to England, as it was no longer safe for us to live in Zimbabwe. We arrived at Heathrow with a suitcase each. Our computers took up half of that space! We rented a two bedroomed house from an English friend in Newton Abbot. My mother and the two children shared one bedroom and John and I used the other bedroom as an office! We used our small bit of savings to live on and keep the company going.

**When did you start the company?**

In 1995 we were living in a national park on the edge of Lake Kariba working at my father's engineering business. Our garden was regularly visited by elephant and there were hippo grazing the lawn, spectacular stars at night. Our visitors were always commenting on how amazing it was and saying we should start a safari company, so we did!

**What are you most proud of?**

Besides our 2 children whom we're terribly proud of, our business has provided us with a living through thick and thin, given employment to a few in Africa, England and USA. In addition, we're the biggest safari company in Modbury!

**What is your secret skill?**

John makes teeny little cherry tomato butterflies to decorate the dinner plate and is an amazing chef. I love food - its a perfect match when the world is in harmony and John agrees to do the cooking!



*Above - stunning photo of a leopard taken in Zambia by Ashton Berry, John and Trish's son.*



**Put this date in your diary**  
**Saturday, 19th July, 2014**  
 No, we have no idea what it's all about but Kay from Wild Goose will let us know soon!

*Right - Wonwell - Modbury's favorite beach, according to this month's interviewees! (Lovely photo taken by Ron Wood)*



*Justine Slade - Modbury Post Office*

**What made your family decide to move to Modbury?**

We were looking to buy a business and the Newsagents came up for sale so we thought we'd give it a go! The time was right with our son Alex starting school. When the Post Office came on the market we thought that the Post Office and a newsagents would blend well together.

**Any regrets?**

No, it was a good decision. The hours are very long and it's six and a half days a week, but we have great staff so we don't have to get up every morning!!

**What are you most proud of?**

My children and after them it would be my time as a Fire Fighter.

**What is so interesting about being a Fire Fighter?**

The work and training is really intense as is the commitment of the people who do it. You are training all the time either to keep yourself fit physically or for different scenarios that might occur - for instance - resuscitation or other acute medical situations you might encounter. A Fire Fighter has no idea what they will encounter when there is a call out so you have to be prepared for anything. Also you get to go to the most amazing places that you never knew existed.

**Any hobbies?**

Peter and I really enjoy walking and I love gig rowing in Salcombe. At the moment I am training hard to be fit enough to hopefully for the World Championships on the Scillies in May.

**If you won the lottery what would you like to be doing next year?**

Nothing different really, except maybe more holidays!

**Favourite place?**

Wonwell.





*Jennifer Johnson  
Artist*

**Are you from Modbury?**

*No, I was fairly nomadic till I moved to Devon. And have now lived here for 35 years.*

**What is your favourite thing about Modbury?**

*Its central location in the South Hams and I love the Georgian architecture.*

**Tell us about your career**

*I have always worked as an artist and previously have done more book illustration and design, I am now often commissioned to paint portraits and animals.*

*For the last 21 years I have tutored painting holidays at a chateau in France for 4 weeks a year, teaching all abilities and all mediums.*

**When you're not working what do you like to do?**

*I like to sketch in my spare time.*

**What are you most proud of?**

*For the last 7 years I have been the artist in residence at Dartington's Way with Words festival. I have sketched lots of famous people including Michael Palin and Darcy Bussell.*

**Where would you like to be right now?**

*My favourite places in the world are the Isles of Scilly and Wonwell beach.*



*Come and join us for Breakfast!*

*Bright and early and full of ideas at the Lazy Cow on Thursday mornings, 8.15 - 9am.*

*On **Thursday 6th February** please come to our evening meeting at the Modbury Inn at 6.30pm. We hope this will suit those of you who can't make the morning meetings.*

**If you are a business owner and would like to 'spread the word' about what you do, then please email Lizi Watson - [breakfastclub.lizi@gmail.com](mailto:breakfastclub.lizi@gmail.com) and she will arrange to interview you for a future edition of The Modbury Messenger.**



*update*

**THE BREAKFAST CLUB**

*The Breakfast Club is an informal group which supports small businesses. Its main aim, along with the Modbury and District Business Chamber, is to promote Modbury and the surrounding area. Please feel free to join us if you would like to - everyone is very welcome.*

**FACEBOOK PAGE - CONTINUING SUCCESS!**

*Keep up-to-date with news of special offers and general town gossip*

[www.facebook.com/modburynews](http://www.facebook.com/modburynews)



*Our facebook page is a great way to talk to the people of Modbury and beyond! Every week we reach around 1,500 people. If you have a message to get out there please email it to [alisonsgraphics@yahoo.com](mailto:alisonsgraphics@yahoo.com)*

*We have fans all over the world - from Africa to Australia, the USA to Dubai. Please 'like' our page and encourage your friends and family to do the same!*



*Charlotte & Andy -  
Rathbone Partnership*

**When and why did you move to Modbury?**

*We came here in 1995 and started our business, Rathbone Partnership, in 1996. We bought this house because it suited our needs as we wanted to work from home and also have time with the children and the community.*

**You are both Chartered Landscape Architects and in business together, how does that work?**

*We share most of the routine day to day running of the house and children - Andy is a dab hand with the Hoover and ironing!!*

**Where were you before you moved here?**

*We spent nearly four years working in Hong Kong and Josh, our son, was born there.*

**What type of landscape architecture did you do in Hong Kong?**

*Because Hong Kong is densely populated the government employed us to design public parks. These parks were on a huge scale where we had to reclaim part of mountains to build the parks. It was a very exciting time and it was wonderful to experience another culture at such close quarters.*

**Secret skills?**

*Andy built a boat which we sailed for several years and I love cooking with locally sourced foods.*

**What are you most proud of?**

*Balancing bringing up children and working. We are also so proud to still be living in the South Hams which is such a beautiful place!*

**Where is your favourite place?**

*It has to be Wonwell.*



**MODBURY**  
HERITAGE MARKET TOWN

ARCHITECTURAL DESIGN & SERVICES



**NEST DESIGN** 28 Galpin Street, Modbury, Devon, PL21 0QA  
[www.nestdesignstudio.co.uk](http://www.nestdesignstudio.co.uk) 01548 830409



## Traditional Butcher, Farm Shop & Cafe

*You will be surprised just what we do!*

Providing local produce. Beef, Pork, Lamb & Poultry for the retail & catering trade.  
Delicatessen, Fresh Fruit & Veg, Vintage Style Café

**Free Local  
Delivery available**

**Rake Farm, Loddiswell & 6 Church Street, Modbury**

Loddiswell: 01548 550413 | Café: 01548 559126 / Modbury: 01548 830240

[www.aunevalleymeat.co.uk](http://www.aunevalleymeat.co.uk)

### Retained Duty System Firefighters

Devon & Somerset Fire and Rescue Service have vacancies **in Modbury** for on-call ( Retained Duty System ) Firefighters. We are actively seeking to enhance our establishment especially from Mon – Fri 09:00 – 17:00. With flexible contracts this can be more appealing for shift workers or those who may be able to offer term time working. On call Retained Duty System Firefighters are paid for their services - they receive thorough training enabling participants to achieve a certificate in First Aid, plus all there is to know about emergency situations. These roles are certainly demanding but in return offer the chance to make a real contribution in this vital service in your community. They also provide the opportunity of forming close working relationships with members of the team. Whilst dealing with emergencies takes priority attending community events and acting as an ambassador for the Service are additional aspects of the job. We need both men and women to operate in frontline situations. Watch Manager Pete Watts 07786 255 056



## Clubs and Groups in Modbury

Modbury Society	Burda Gage	<a href="mailto:roger@burdagage.fsnet.co.uk">roger@burdagage.fsnet.co.uk</a>
Badminton Club	Gill Jolly	<a href="mailto:gill.jolly@btinternet.com">gill.jolly@btinternet.com</a>
Bellaphonics	Gill Jolly	<a href="mailto:gill.jolly@btinternet.com">gill.jolly@btinternet.com</a>
Cricket Club	Rodney Bomford	<a href="mailto:rodney@bomford.eclipse.co.uk">rodney@bomford.eclipse.co.uk</a>
Millennium Meadow	Doreen Flood	<a href="mailto:doreenflood@tiscali.co.uk">doreenflood@tiscali.co.uk</a>
British Legion	David Mitchell	01548 830446
History Society	David Mitchell	01548 830446
Fruit and Produce Show	Angela Peters	01548 830638
Footpaths	Brian Weeks	<a href="mailto:weeks.fam@virgin.net">weeks.fam@virgin.net</a>
Twinning	Charlotte Kendrick	<a href="mailto:gckendrick@btinternet.com">gckendrick@btinternet.com</a>
Tiddlers/Noah 's Ark	Helen Pickard	<a href="mailto:helenpickard@metronet.co.uk">helenpickard@metronet.co.uk</a>
Lunch Club	Monica Willis	01548 830541
Parish Council	Sally Walsh	<a href="mailto:modburypc@tiscali.co.uk">modburypc@tiscali.co.uk</a>
Scouts and Cubs	Jo Woodcock	<a href="mailto:jojowoodcock@hotmail.co.uk">jojowoodcock@hotmail.co.uk</a>
Devon Rural Archive	Abi Grey	<a href="mailto:office@dra.uk.net">office@dra.uk.net</a>
Calligraphy	Caroline Barker	<a href="mailto:revbarker@btinternet.com">revbarker@btinternet.com</a>
Church	Rev Neil Barker	<a href="mailto:revbarker@btinternet.com">revbarker@btinternet.com</a>
Craft Fairs	Charlotte Aylward	<a href="mailto:possumaylward@aol.com">possumaylward@aol.com</a>
Silver Threads	Zena Hockaday	01548 830923
Modbury Cyclists	David Smith	01548 831589
Rock Shop	David Smith	01548 831589
Gospel Singers	Jill Miller-Williams	<a href="mailto:jmwmodbury@gmail.com">jmwmodbury@gmail.com</a>
Allotment Association	Brian Weeks	<a href="mailto:weeks.fam@virgin.net">weeks.fam@virgin.net</a>
Modbury TIC	Stan Pratt	<a href="mailto:stanpratt@modbury.entadsl.com">stanpratt@modbury.entadsl.com</a>
Modbury Club	Geoff Fielden	01548 830916
Modbury Junior Rovers	Eileen Berry	01548 831307
Tennis Club	Jo Owen	<a href="mailto:jo_owen@hotmail.com">jo_owen@hotmail.com</a>
May Fair	Paul Romney	<a href="mailto:paul.romney415@btinternet.com">paul.romney415@btinternet.com</a>
Town Square Group	Rob West	<a href="mailto:rob@robwest.me.uk">rob@robwest.me.uk</a>
School PTA	Claire Haggard	01548 830957
Preschool		01548 831477
Business Chamber	Jon Sullivan	<a href="mailto:jonleighsullivan@gmail.com">jonleighsullivan@gmail.com</a>
MARS	Peter Watts	<a href="mailto:petewatts1943@hotmail.co.uk">petewatts1943@hotmail.co.uk</a>
Modbury Caring	Helen Prosser	01548 830666
Modbury Players	Sarah Wyatt	<a href="mailto:sarahannewyatt@yahoo.co.uk">sarahannewyatt@yahoo.co.uk</a>
Brownies	Lorraine Phillips	01548 830301
Pantomime	Nigel Guild	<a href="mailto:nigel_guild@lineone.net">nigel_guild@lineone.net</a>
Memorial Hall	Mel Jeynes	<a href="mailto:pamandmel@googlemail.com">pamandmel@googlemail.com</a>
Lupbridge Singers	Roger Gage	<a href="mailto:roger@burdagagefsnet.co.uk">roger@burdagagefsnet.co.uk</a>
Modbury Patchwork	Lynn Pinkney	<a href="mailto:pinkney.ian@gmail.com">pinkney.ian@gmail.com</a>

# Modbury Information Centre

MODBURY INFORMATION CENTRE  
2, Modbury Court, 32 Church Street  
**01548 830159**

If the rain ever stops (and we can get through the mud!) there are lots to do during February whether you prefer to get out for a stroll or enjoy something indoors.

For the energetic walkers amongst you, on Saturday 8<sup>th</sup> February, Dartmoor National Parks have a ranger led walk on the north of the Moor starting at 10.00am and lasting 6 hours. Call 01626 831040 to book.

The Devon Wildlife Trust, South Brent & Ivybridge branch, have arranged a saunter through the snowdrops along the River Yealm on Saturday 15<sup>th</sup>, starting at 10.30am from near St Bartholomew's church in Yealmpton. There is an optional extension for birdwatching along the estuary after 12 noon, bring a picnic lunch if you would like to do this. Call Margery Evans on 01752 892984 for further details. For a day out during half-term why not pop up to Moretonhampstead for a family activity day on Thursday 20<sup>th</sup> from 11am – 3pm at Dunsford nature reserve. There will be tree ID games, nature quiz trail and woodland craft activities for all ages.

An exciting exhibition starts on the 8<sup>th</sup> February until the 26<sup>th</sup> at Harbour House in Kingsbridge. Twelve local primary schools have contributed drawings, paintings, collage and printmaking, and sculpture in its many forms. The exhibition is titled Primary Colours and is guaranteed to brighten up drizzly days, raise the spirits and celebrate the children's creative talents.

## Annual General Meeting

All members of the association, (that is volunteers, advertisers and committee members) are invited to attend our AGM on Wednesday 26<sup>th</sup> February at 6pm in the meeting room of the Memorial Hall in Back Street. Please try to find time to attend this important meeting to discuss the future of the TIC.

Sadly this is my last report for the Messenger as I relinquish my position as Manager of the TIC. I hope you have tried one or two of my suggestions during the last 3 years and will continue to enjoy our wonderful surroundings in the future. Thank you also, for the many favourable comments I have received during my tenure.

**Margaret Middleton**, Manager.

## ST LUKE'S COFFEE MORNINGS GET A MAKEOVER



St Luke's Hospice Plymouth invites you to join them tin holding a coffee morning this February.

Coffee mornings aren't something new to St Luke's, in fact, they have been an important part of the local charities fundraising activities for over 30 years.

As the charity starts a New Year of fundraising, St Luke's coffee mornings are about to get a complete makeover with a new look and the introduction of a pack to support you every step of the way as **Assistant Community Fund-raiser at St Luke's, Rebecca Bristow explains:** "The coffee morning pack includes, a poster to promote your event, recipes for some scrumptious cakes, fun games to play and loads of ideas to make sure your event is the talk of the town. With over £4.5 million to raise every year to fund the hospice

You can make a real difference to the people who need us most in the last months, weeks and days of life". A coffee morning with your friends, W.I groups, toddler groups, churches or local businesses, anyone can join and help raise money for St Luke's.

So dig out your best crockery, turn on the kettle and get the whole community drinking coffee for St Luke's this February.

**To request your coffee morning pack, call 01752 246597**

**or visit ww**

**w.stlukeshospice.org.uk**



## Modbury Societies



### MODBURY LOCAL HISTORY SOCIETY

The talk on Devon Castles by Robert Hesketh ( Jan 8th ), attended by at least 50 members, was very interesting .We were surprised to learn how many there are – Blackdown Rings near Loddiswell was included as there are remains of buildings to be seen and it was an important fortification. Robert was thanked by our chairman, Mary Timmis, who said no doubt many of our members will be visiting some of the interesting places mentioned. One of our more recent members – Lesley Allsopp , with her husband Stephen, settled here in 2010 and she has been encouraged to give a talk about her experiences. Her family has connections with Modbury going back many years and she will give a talk on Wednesday February 12th at 7.30pm in the White Hart, thanks to the management.

**David Mitchell**



### The Royal British Legion Modbury Branch

The first branch meeting in 2014 will take place on February 3<sup>rd</sup> at our usual venue – The Modbury Club, commencing at 7.30 pm. The Modbury Branch was represented at the recent Devon County Conference in the Crownhill Royal British Club. This month we shall also be represented at the group meeting in Totnes by our chairman and secretary. We belong to the South Devon group, which consists of 12 branches.

New members welcome, you do not have to be ex-service.

**David Mitchell 830446**

### Calling all local outside caterers



Modbury Association of Recreation & Sport is currently inviting any local outside caterer who would like to promote their services to hirers of the Pavilion at the QEII Recreation Ground, to contact us in the first instance with their details. You can do this by visiting [www.marsport.org](http://www.marsport.org) and completing the Enquiry Form on the Home Page.



The next general meeting will be held in The Watermark on Monday 17th February at 2pm The speaker will be Tom Maddock talking about Scobell RM of Sevastopol

**Doreen Flood**

### Modbury Silver Threads

We hope to see all our members and friends as usual in early February

Contact Numbers:

Liz 830313

Zena 830923

# School Report



## Modbury Pre-School.

We are holding a quiz night at the Exeter Inn Modbury to raise funds for a new sandpit for our outside play area. It will be held on 1st March 8.30pm start. Entry fee is £1 per person, teams of up to six people. There will also be a sponsored head shave on the night by Mrs Fiona Baker! You can sponsor Mrs Baker by sponsorship form on our information table at the entrance to preschool. All funds raised from Mrs Baker's head shave will also go to buying a new sandpit. Please come along for a fun filled night!

*Nicolle McKenzie Modbury preschool committee*

Are you fed up with winter? Do you need a bit of cheering up? If the answer is yes, then make sure you head to the Modbury Memorial Hall on Saturday, February 8 for the 2<sup>nd</sup> running of Live and Local.

Even if you are a cheery soul whatever the weather, it 's a night not to be missed as three fantastic local bands will be taking to the stage, not at the same time of course, to provide musical entertainment.

There 's Hillhead, for funky happy tunes that make you smile and tap your feet, Fifty3Four, who play covers that make everyone want to get up and dance, and Dead Horses, another fantastic band.

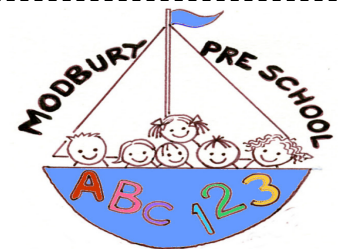
Please come and support this brilliant evening – the bands are providing their time free, and all proceeds will go towards Modbury Primary School.

Tickets cost £5 in advance and £6 on the door and are available in Pickles.

We 'll be collecting for **Phil the Bag** in March so please do keep any textiles and clothing. It 's a great initiative that really benefits the school and the environment because by recycling your clothes for people to re-use, you will be helping to reduce landfill.

If you 'd rather not hold on to your textiles until March, please give Clare Hagger a call as we have storage space at the school. 01548 830957.

Lucy



**FULL DAY CARE,  
5 DAYS A WEEK**

Your **3 - 5 year** old can now attend preschool all day

**Toddler Group Thursday**  
1.15 - 3.45pm, all welcome

**2½ year olds** are welcome  
3 afternoons per week

Excellent OFSTED Report

Learning opportunities in  
Number, Language & Literacy,  
Creativity, Knowledge &  
Understanding of the World,  
Physical & Personal and Social &  
Emotional Development.

### SESSIONS

Monday to Friday:  
Morning 9.15 -11.45  
Lunch Club 11.45-1.15  
Afternoon 1.15-3.45pm

Maximum of 5 sessions can be covered  
by Early Years Grant Funding

Please phone or drop by to enquire  
about extra sessions to suit your  
needs.

**Modbury Preschool, Back St,  
Modbury**  
01548 831477

Registered Charity No. 1039616



## Local Adverts

### "The Ermington Players

#### Pantomime.

"The Good, The Bad and The Ugly Sisters " will be performed on February 20<sup>th</sup>, 21<sup>st</sup> and 22<sup>nd</sup> at The Globe Theatre, Stonehouse, Plymouth.

Performances start at 7:30pm.

Tickets cost £8 for adults, £5 for under-12 's and a family ticket for 2 Adults and 2 Children costs £21.

Tickets can be purchased via the Ermington Players website:

[www.ermingtonplayers.org.uk](http://www.ermingtonplayers.org.uk)

Select the Future Productions page and then click Buy Tickets.

Bob Knightly.



I am an Ingham Qualified, Fully Insured Reflexologist who can offer treatments at either my rural treatment room just outside **Modbury**, or within the comfort of your own home.

*So why not call me today to see how reflexology may help you.*

Gift Vouchers available Gift Vouchers available

Bridget Thomas, MAR  
Tel: Modbury 01548 831629  
Mob: 07973 506083



### New Pilates Class

Monday nights 6-7pm  
And 7-8 in the brand new Modbury Recreation Ground Function Room with myself, **Faith Taylor**, Pilates Instructor/ Physio-therapist.

A chance to improve your strength, balance and flexibility..

All Welcome!

Please contact me on 07988 892588 or email : [faithtaylor1988@gmail.com](mailto:faithtaylor1988@gmail.com)  
To book your place.

Flete House illustrated Talk: In Grandpa 's Footsteps - from Barry Island to Shanghai by Lizzie and Tony Barron, who made the same journey 100 yrs later! Feb.7th.7 - 9pm. Tickets £5 including a glass of wine or soft drink and nibbles. Tickets from Ruth -78430 or Marcia 01752 830579

## HARDY PRINT

DO YOU HAVE A NEED FOR  
HIGH QUALITY  
LOW COST PRINTING ?  
THEN WE CAN HELP YOU

FLYERS, POSTERS, BROCHURES, BOOKLETS  
& MUCH MORE

HIGHLY COMPETITIVE COSTS,  
AMAZING TURNAROUND !  
DESIGN SERVICE AVAILABLE

WE CAN ALSO OFFER, WEBSITE DEVELOPMENT,  
MAILING SERVICES, MARKETING CONSULTANCY,  
SEARCH ENGINE OPTIMISATION  
AND PUBLISHING SERVICES.

LET US KNOW WHAT YOU WANT TO DO

CONTACT JON HARDY

07801 238859

OR

[jon.hardy@btconnect.com](mailto:jon.hardy@btconnect.com)

LOCATED IN IVYBRIDGE  
FOR A VERY PERSONAL SERVICE

## G H W Rosevear & Co

Chartered Secretaries and  
Incorporated Financial Accountants

*We specialise in the following services:*

*Accountancy and Taxation  
Probate and Inheritance Tax (IHT)  
Company Secretarial Services  
Legal Support Services  
Property Management*

We can also provide you with Book-keeping,  
Payroll Services and VAT Returns

### Office Hours

**G H W Rosevear & Co**  
3, Modbury Court, 32 Church Street  
Modbury, Ivybridge, Devon, PL21 0QR

9<sup>15</sup> a.m. - 6 p.m.  
Monday - Friday  
Weekends by appointment

**Tel: 01548 831427**

**Fax: 01548 830977**

**Email: [george@holbrookass.com](mailto:george@holbrookass.com)  
[www.accountantsouthdevon.co.uk](http://www.accountantsouthdevon.co.uk)**

## Ivybridge Food Bank.

Please continue to give generously to the Ivybridge Food Bank.

There are two 2 collection points one in Petty Cache (with thanks to Margaret Middleton) and one in St. George's Church (at the back by the bells).

Please remember those families in crisis this spring when you are doing your shopping, or if you are donating goods from your store cupboard please ensure they are still in date, as out of date produce cannot be distributed.

The Ivybridge scheme covers Ivybridge, Yealmpton, Modbury, Sparkwell, Shaugh Prior and Lee Moor.

The following is a list of food they would like donated;

Milk (UHT or powdered), Sugar (500g), Fruit Juice (carton), Soup, Pasta sauces, Sponge pudding (tinned), Tomatoes (tinned), Cereals, Rice Pudding (tinned), Tea bags/ instant coffee, Instant mashed potato, Rice/ Pasta, Tinned meat/fish, Tinned vegetables, Tinned fruit, Jam, Biscuits or snack bar.

Thank you!

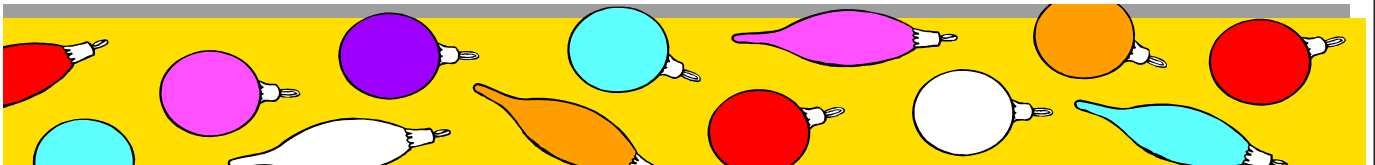
## Christmas lights

### Thank you

Now that the Christmas lights and signs are neatly put to bed for another 10 months we must thank everyone who helped make this last Christmas lights again a spectacular sight.

Phil Ainsley and his Elves made this happen along with the enormous Christmas tree donated by Colin Campbell from Flete Gardens allowed us to complete the high street's Christmas effect. Thank you to everyone who contributed to the Lights and the donations from some of the shops in the high street was a welcomed gesture.

***Tim Roll.***



## Modbury Caring 100 club.

Modbury Carings 100 club January draw took place at The White Hart, the lucky number was drawn by landlady Claudia Gales, the winning number belonged to Lois Lloyd.

Thank you for supporting Modbury Caring.

Modbury Caring Christmas Hamper.

The draw for the Christmas hamper took place on the 20th December at the Health Centre, the lucky winning ticket drawn by Cllr Lindsay Ward, belonged to Ian Leonard.

The raffle raised £454, and Modbury Caring would like to say thank you to all those that supported this latest fund raising event.

***Helen Prosser***



## Contacts & Information

Modbury Messenger-Advertising Tariff  
(From September 2013)

Now reflects VAT at the current rate.

### Single Insertion

One ninth page	£12.26 per insertion
Two ninths page	£27.72 per insertion
One third page	£41.58 per insertion
Half page	£55.44 per insertion

### Three Insertions

One ninth page	£11.10 per insertion
Two ninths page	£22.20 per insertion
One third page	£33.30 per insertion
Half page	£44.40 per insertion

### Six Insertions

One ninth page	£ 8.40 per insertion
Two ninths page	£16.68 per insertion
One third page	£24.96 per insertion
Half page	£33.96 per insertion

### Eleven insertions

One ninth page	£ 5.58 per insertion
Two ninths page	£11.10 per insertion
One third page	£16.68 per insertion
Half page	£19.80 per insertion

Please note that the above is for black and white copy only. Colour copy will cost double the above rates

## MODBURY PARISH COUNCIL PARISH OFFICE

Galpin Street  
Modbury

Tel: 01548 830222

e-mail

[parishclerk@modburypc.co.uk](mailto:parishclerk@modburypc.co.uk)

**Hours of Business-**  
Mondays 9.00am – 1.00pm

**Parish Surgery**  
10 – 11 am every Saturday

### Planning Applications

Notices of planning applications lodged with SHDC are displayed on the Parish Noticeboard outside the Post Office. Copies of plans relating to these applications can be inspected at the Parish Office during above office hours or when a Councillor is on duty.

### Contacting Parish Councillors

Parish Councillors attend the Parish Office, on a rota basis, on Saturday mornings from 10.00 - 11.00am. Should you have any parish matter you would like to discuss come along to the Office on Galpin Street. You can also call in to the Office on Mondays from 9.00am - 1.00pm and speak to the Parish Clerk, Sally Walsh.

The Parish Clerk can also be contacted by phone on 01548 830222 or e-mail at [parishclerk@modburypc.co.uk](mailto:parishclerk@modburypc.co.uk)

At all other times you can leave a message either by phone or e-mail (see above) or alternatively you can write a letter or speak at the public forum held at the beginning of each monthly meeting of the Parish Council, held on the second Monday of each month at 7.00pm in the annexe of the Memorial Hall.

The Editorial Committee reserve the right to précis/abbreviate any copy submitted for inclusion in the Messenger.

## MESSENGER CLOSING DATE

*The closing date for the March Messenger is*  
**16<sup>th</sup> February 2014**

Please send all copy, by e-mail to [modburymessenger@live.co.uk](mailto:modburymessenger@live.co.uk) or deliver to the **Parish Office** (please note that all commercial advertisements should be submitted **ONLY** via the Parish office, and must be in an electronic format).

**Payment for all advertisements must be made in advance. Cheques should be made payable to 'Modbury Parish Council' and sent to The Parish Office, 2, Galpin Street, Modbury PL21 0QA.**

**For advertising tariff info please email**

[parishclerk@modburypc.co.uk](mailto:parishclerk@modburypc.co.uk) or tel 01548 830222

**For further information please contact Sally Walsh on 01548 830222 (Monday mornings – or leave a message).**

The Modbury Messenger is published by The Modbury Parish Council and is printed by SHDC, Follaton House, Totnes.

*The views expressed in the Modbury Messenger do not necessarily represent those of The Modbury Parish Council.*

### **SOUTH HAMS DISTRICT COUNCILLORS** Our South Hams District

**Councillors are:**

**Lindsay Ward – 831078**

[Cllr.LWard@southhams.gov.uk](mailto:Cllr.LWard@southhams.gov.uk)

**Tom Holway**

[tomholway@lineone.net](mailto:tomholway@lineone.net)

Our representative on DEVON COUNTY COUNCIL is William Mumford and he can be contacted on:

**01752 873002 or**

[william.mumford@devon.gov.uk](mailto:william.mumford@devon.gov.uk)

## PERSONAL ANNOUNCEMENTS

The contents of the Modbury Messenger may not be reproduced in any form without the prior written permission of Modbury Parish Council



# PICKLES

## Essentially Home



House & Home



DIY



Garden



Leisure



Outdoor



Toys



Pet Food



Fuel

With regular special offers  
...we stock everything from cookware to pet products,  
thousands of items available at Modbury's one stop shop.

**"delivery service available"**



**Light Bulbs!** Now the manufacture of many incandescent bulbs has ceased, what does the new era technology have to offer? Here is our guide.

Feature	Halogen	Energy Saving	LED
Cost to buy	Cheapest of new era	Middle of the road	Most expensive
Light	Familiar warm light	Harsher than normal bulb	Familiar warm light
Dimmable	Yes	Yes	Options available
Look & size	Same as incandescent	Larger so may not fit all light fittings	Not all equiv wattages and shapes available yet
Brightness	Instant	2 mins to achieve 100% brightness	Instant
Bulb life	Short - approx 2,000 hrs	Long - up to 10,000 hours	30x longer - up to 30,000 hrs
Energy saving	2-25% less energy than incandescent	80% energy saving	90% energy saving
Running cost	Average	Low	Ultra Low
Harmful chemicals	None	Traces of mercury- careful disposal required	None



**Don't forget Pancake day!** *Shrove Tuesday, 4 March*

### INGREDIENTS

120 g plain flour, 2 eggs, 300 ml milk, vegetable oil, for frying. Prep time: 15 min, plus standing  
Cook time: 15 min / Serves: Makes 8 pancakes

### METHOD

1. Sift the flour into a bowl and make a well in the centre. Add the eggs and beat with a whisk or fork. Gradually beat in the milk, drawing in the flour from around the edge, until you have a smooth batter.

2. Cover and leave to stand in the fridge for at least 30 mins.

3. Heat a little oil in a 18cm heavy-based frying pan, tilting the pan to spread the oil evenly.

4. Pour in just enough batter to thinly coat the base of the pan. Cook for 1-2 minutes until golden on the under side. Flip over, and cook the other side until golden.

5. Transfer to a plate, keep warm.

6. Repeat with the remaining batter to make eight pancakes.

*(Needs to be over seen by an adult)*

**10% OFF**  
**Kitchenware**  
Voucher  
valid until  
04.03.14

2 Broad Street · Modbury PL21 0PS · Tel : 01548 830412  
[www.picklesmodbury.co.uk](http://www.picklesmodbury.co.uk)