



# Modbury Messenger



## MODBURY CHRISTMAS LIGHTS AND



### LATE NIGHT SHOPPING

Yes it's here again. Time to put in your Diary of Events the date for **THE MODBURY LIGHTS SWITCH ON** which this year is **Friday 26 November** starting at **6.00 pm**. All the fun of the fair will again happen.....and a few more surprises to enjoy.

Come and soak up the atmosphere and show your support




**Santa's Grotto**  
Friday 26<sup>th</sup> November

At the Crab Pot Café,  
(behind the White Hart)

After turning on of Modbury  
Christmas lights



In aid of Modbury Preschool  
Charity Number: 1028010

## Modbury's very own "Nearly New Fashion Show"



Fund raising for any cause brings out the very best in people whether it is their expertise, time, or digging deep into their pockets for a charitable cause; and Thursday 14 October at The White Hart in Modbury was no exception. The Nearly New Fashion Show organised by Mandy Rolt of Top O' The Steps in Modbury, on behalf of The Lady Taverners who raise funds in order to give young people, particularly those with Special Needs, a sporting chance, generated a staggering £1034.

Using nearly new or new clothing generously donated by The Lady Taverners and organised by its Chair Lady, Leslie Forrest, Mandy and her team of volunteers transformed the function room above The White Hart (loaned by Mark free of charge) into a spectacular catwalk for an audience of over 130 people who were entertained as if viewing a 'New Collection' at the beginning of season in Paris. All this with a Bellini and nibbles prior to the start of the show.

Eleven glamorous volunteer models from Modbury and the surrounding area, expertly made up by Louise Pitt of Individual Eyes and hair styled by the team at Nicholas Hair & Beauty, wowed the audience with a show choreographed by Mandy and professionally compered, by Andrew Facy.

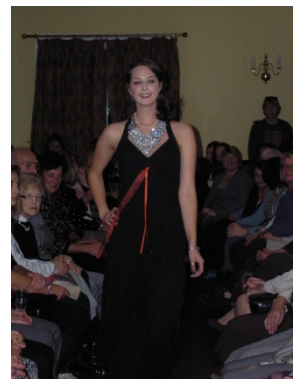


The whole show (lighting & music by Mike Berry of Euphoric Promotions) created a fantastic ambiance, all given free of charge for the Charity.

Four very quick changes by the models allowed a seamless show presenting outdoor, day, wedding/occasional and evening wear. The finale where one of the models, Kate West, was carried out by a fireman (her husband Sam) brought the show to an amusing and fitting climax.

Unreserved thanks go to all who made this gala evening such a resounding success.

*Tim Rolt*



## AROUND THE CHURCHES



### St Monica's Roman Catholic Church

St Austin's Priory  
01752 892606  
Sundays  
9.00 am Mass

*Everyone Welcome*

---

---

### Modbury Methodist Church

#### Superintendent Minister

Rev John Beadle  
(Tel 01548 852073)

#### Minister

Rev Gordon Davis  
(Tel 01803 862350)

#### Sunday Services

10.30 am in  
St Monica's Church  
This is a small friendly group  
Do come and join us

#### November Services

##### Sunday 7<sup>th</sup>

Mr Rob Hamblin

##### Sunday 14<sup>th</sup>

Remembrance Service  
At St George's

##### Sunday 21<sup>st</sup>

Rev John Beadle  
(Holy Communion)

##### Sunday 28<sup>th</sup>

Miss Anne Kenyon

### **"Change and Decay in all around I see"**

They say that as you get older you find change more difficult to cope with. Perhaps it's because we have vivid and valued memories of the past, and how we did things then. Perhaps it's because the latest gizmo is actually no better than its predecessor (or is even unnecessary). Perhaps we are simply trying to avoid the inevitable, cocooning ourselves in a little world of our own.

But the truth is we can't avoid change. The grey hairs, wrinkles and aching joints remind us of the changes that come as we get older. Yesterday's babies and toddlers tower over us today, and are off to university. Whether the world around us is decaying (as the hymn suggests), there are times when we feel decidedly that we are! The frightening thing about change is the way you lose familiar landmarks (and that's before the short-term memory goes!). The town centre you knew like the back of your hand becomes a nightmare with rebuilding and new traffic flows. We find ourselves in unfamiliar territory, in an alien landscape, and it can be more than a trifle disconcerting.

So is nothing constant, certain? The Bible describes Jesus as "the same yesterday and today and for ever", who can provide a sure anchor and foundation for life. In other words, behind all the changes, developments and technological advances of the 21<sup>st</sup> century, is someone who provides a constant yardstick for our lives. Jesus is the reference point by which we can judge whether our actions are good or not, and a sure foundation when we are tossed about by problems and uncertainties. It is little wonder that the verse of that hymn ends with a plea: "O thou who changest not, abide with me!"

And that is the secret of a contented life – not a selfish one full of self-satisfaction, but one which can cope with all the problems, joys and tragedies of life and still be at peace. Someone once said that if you feel that God is a million miles away, who moved? We come back to him when we accept that we have not gone his way, and ask him not only to forgive us, but also to be the centre of our lives, to guide and strengthen us day by day. That's what is meant by "abiding" in God. It doesn't mean special words or religious knowledge, just a desire to have Jesus as a constant and unchanging friend through life's journey.

If you haven't done so, why not ask him now?

Michael Tagent



### St George's Parish Church, Modbury *Connecting people to God*

#### SERVICES AND EVENTS NOVEMBER

##### Wednesday 3<sup>rd</sup>

7.30 pm – Worship Group Practice

##### Thursday 4<sup>th</sup>

9.15 am ish – Noah's Ark

##### Sunday 7<sup>th</sup>

9.30 am – Holy Communion

##### Wednesday 10<sup>th</sup>

9.00 am – Staff Meeting at St George's

##### Thursday 11<sup>th</sup>

9.30 am – Holy Communion

##### Sunday 14<sup>th</sup>

8.00 am – Holy Communion  
10.30 am – Remembrance Service

##### Tuesday 16<sup>th</sup>

7.30 pm – Magnet Committee Meeting  
in the Vicarage

##### Thursday 18<sup>th</sup>

9.30 am – Holy Communion

##### Saturday 20<sup>th</sup>

7.00 pm – Puddings and Quiz Evening  
In Modbury Memorial Hall

##### Sunday 21<sup>st</sup>

9.30 am – Family Communion

##### Thursday 25<sup>th</sup>

9.30 am – Holy Communion

##### Friday 26<sup>th</sup>

6.00 pm – Modbury Lights  
and Late Night Shopping

##### Saturday 27<sup>th</sup>

2.00 pm – Cre8 Advents  
Craft Workshop at St George's

##### Sunday 28<sup>th</sup> (Advent)

8.00 am – Holy Communion  
9.30 am – Morning Prayer

**St George's & St Andrew's  
are open every day for prayer**

# PARISH PAGE

## PLANNING

**Modbury Parish Council recommended approval for the following:**

*Alyth, 12 Silverwell Park* – Extension and alteration to bungalow.  
*Modbury School* – Demolition of Horsa Classroom and construction of new single storey double classroom block.  
*Moor View Touring Park, California Cross* – Siting of 11 holiday lodges.

**South Hams District Council granted and Modbury Parish Council recommended approval for the following:**

*1 Tuckers Brook* – Alterations and extension.  
*The Barn, Back Street* – Change of use from residential to office accommodation.

## ROAD CLOSURE

Please note that from Wednesday 3 November until approximately Tuesday 9 November 2010 the C286 from Trainee Terrace at the top of Galpin Street to Ayleston Cross will be closed due to repairs being undertaken.

## THE DISAPPEARING PICNIC BENCH MYSTERY

Many people used the picnic bench in the Millennium Meadow during the summer for snacks or picnics but now it has disappeared – why? Unfortunately a few **vandals/litter louts** chose to misuse it. They first just spread their litter then they broke the seat, and as if that weren't enough they broke the table, making it not only unsightly but a positive danger. As a result the Community Police recommended that we remove it and not replace it. So the mindless actions of a few have spoilt the pleasure of many.

Littering itself, although unsightly, is not always dangerous, although it can be if that litter includes dog faeces or broken bottles and we would like to remind you that it is illegal and can result in a considerable fine for the offenders. There really is no excuse now that there is a bin for both litter and dog mess near the entrance to the meadow.

**Discarded litter won't just vanish; dog mess is dangerous – pet walkers must bag it and bin it  
PLEASE USE THE LITTER BINS**

## ONE MONTH PROPOSED ROAD CLOSURE FOR MODBURY HIGH STREET BY SOUTH WEST HIGHWAYS

Last Monday morning at 9.00am shop owners in the high street were informed by way of a letter given to them by a community liaison officer of South West Highways of a road closure for re-surfacing Church Street. The work will take place between the hours of 9.30am and 4.30 pm Monday to Friday commencing 14th February until 11th March 2011.

Traders who asked if SWH might consider an alternative time such as evening work were told that SWH and Devon County Council did not want to upset the residents by working later into the night and also that they would incur overtime costs!!

We are all aware of the downturn in the retail high street sector and Modbury is one of the most vulnerable as all of its high street traders are independents, bar the Co-op. If this closure takes the format that is proposed, then your high street may never look the same when the road re-opens. The Chamber and its traders urge all the residents to support a review of this closure in any way

they feel fit. It is understood that repairs need to be done but a more workable solution must be found. The Parish Council and District Councillors are abreast of the situation and a formal meeting has been requested with Devon CC and SWH but they and we need everyone's input and support.

We are all very proud to be part of our special town and want to keep its uniqueness so please help us keep Modbury **OPEN** and its shops trading.

*Modbury Chamber of Commerce.*

## PERSONAL NOTICES

### THANK YOU

Words cannot express my gratitude for all the cards, gifts and flowers bestowed upon me during my recent 'holiday' in hospital. Rehabilitation has been progressing well and hopefully soon I will be walking tall!!

My thanks go especially to my sons Simon and Ross, their wonderful wives Susan and Jane and my two beautiful grand-daughters. Also my friends John and Joan Burns who were such a support to Christine with transport and lovely suppers! Sue Sturton, Mike and Gill, Mel and Janet..... the list is endless, so thank you all so much

Derrick Wilkinson

### LIFT SHARE - Can you help???

Lift needed please from Modbury for school leaver who has embarked on 6<sup>th</sup> form vocational course.

Is there anyone who goes to/through Plympton Ridgeway (Mon or Wed for 8 am) or (Thurs or Fri for 9 am) or to Saltash (Mon or Wed for 9 am). If you can help, even on just one day a week, it would be really helpful. Thank you.

Please call (m:07855 830631 h:01548 831636)

Or email [elainegosling@btinternet.com](mailto:elainegosling@btinternet.com)

### MARS 50-50 LOTTERY RESULTS SEPTEMBER 2010

1 <sup>st</sup> : 125	Jacqui Thorns	£27.50
2 <sup>nd</sup> : 046	Mary Rose Rogers	£16.50
3 <sup>rd</sup> : 117	Nessa Martin	£11.00

### OCTOBER 2010

1 <sup>st</sup> : 001	Deena Farrell	£27.50
2 <sup>nd</sup> : 075	Estelle West	£16.50
3 <sup>rd</sup> : 108	Caroline Percival	£11.00

**To take part in the 50-50 Draw contact the Membership Secretary: Lynn Weeks - 830007**

## MODBURY TOURIST INFORMATION CENTRE

5 Modbury Court Modbury Ivybridge Devon PL21 0QR  
Tel: 01548 830159 [www.modburytic.org.uk](http://www.modburytic.org.uk)

And so our main season draws to a close - but no, we are not finished yet! There is still so much to do throughout the Autumn and Winter months.

The new **South Devon AONB** leaflet is now available with exciting walks of various lengths, days when you can help with countryside management and spooky activities to entertain the family for Halloween. For those of you who enjoy food, the Dartmouth Food Festival may inspire you or maybe a wander around Sharpham to harvest rosehips, berries and chestnuts to make delicious chutney. Every 3<sup>rd</sup> Sunday join in with Stride Out Sundays, guided walks of four to nine miles.

Hate the gloomy evenings? Even when it's dark there is something going on - join a local astronomer to gaze at the skies at Berry Head, Slapton or Yealmpton.

I can personally recommend any of the Secret Slapton events having experienced an extremely informative (and entertaining!) stroll around the Nature Reserve, with Nick Binning of the Field Centre, as part of the Walking Festival.

**Dartmoor National Park** also has an **Autumn/Winter publication** with safe, guided walks of varying lengths, an Introduction to Caving and yet more Spooky Halloween trails. Younger members of the family may enjoy identifying different birds on one of the Young Bird Watchers walks organised by the National Trust.

I know it's really too early to be thinking of Christmas but we do have some **exclusive** 'Modbury' gifts to give to your loved ones around the country - tea towels, fridge magnets, mugs, coasters & miniature tea-sets. Also the beautiful 'South Hams Calendar 2011' with stunning local views is available for only £4.99.

Not enough room for Granny over Christmas? Some of our local accommodation providers will be open over the period on a 'bed only' basis - ask for further details.

Full details of these events, and many others, are in the Tourist Information Office in Modbury Court. Open 10-1, Monday-Saturday throughout October and then every Saturday morning 10-1.

When closed, much of the information can be collected from the racks outside the office.

Come in and see what's going on around you!

*Margaret Middleton*

## National Service Reunion 2010

This year's reunion will be held at the Modbury Inn on Thursday 18th November commencing at 1900 hours. By kind permission of Colin and Mary.

Any person who was conscripted to National Service is welcome to attend.

*AC1 Roy Sims RAF  
Tel: 830530*

## COB BUILDING IN DEVON

Wednesday 3 November 2010

At 8.00 pm

At the Devon Rural Archive, Shilstone  
Modbury PL21 0TW

An evening lecture by Linda Watson who is the Programme Manager for the MA in Architecture Conservation. Linda is also Associate Professor in Architecture at the University of Plymouth.

Tickets £4 in advance from Amy Davies. Tel: 01548 830888  
Email: [amy@dra.uk.net](mailto:amy@dra.uk.net)

There is an associated exhibition on Cob Building on display, which was originally produced in 2000 by English Heritage and the International Council on Monuments and Sites (ICOMOS) UK.

*Amy Davies, Devon Rural Archive*

## THE GREEN CORNER November 2010

**10:10** is a global project urging everyone to cut their carbon emissions by 10% this year. Along with this goes the financial saving, and as winter temperatures make us spend more on heating, how can we save on our heating bills? Proper insulation and sealing windows and doors can save at least 10% of our costs. Keep the heat inside instead of trying to heat all of Modbury. All homeowners and private tenants in the South Hams are eligible for free or discounted loft and cavity wall insulation. Call The Energy Saving Trust (0800 512 012) and mention "Cosy Devon", or look at: [www.cosydevon.co.uk/47/south-hams](http://www.cosydevon.co.uk/47/south-hams)

The Allotment Association have had a fantastic year with their vegetables and fruit and many people had success with their "Plant in a Pot" from Modbury Fair week. So why not plan to grow something to eat next year? You'll maybe not be able to save 10%, but what value can you put on eating fresh beans or tomatoes that you've grown yourself. At a local Garden Centre some trays of small lettuce and leak plants were on sale at £3.49 for six plants or so. For £3.49 you can buy enough seed for everyone in Modbury to overdose on lettuce for a week!

The latest box of cat-food contains "10% less Cardboard" and I wonder whether Rusty the cat has noticed the improvement in flavour.

In days past, drivers used to boast about how quickly they could do long journeys - "from here to Bristol and back in 4 hours". Probably exaggerating a little, but now the new skill is to claim you can drive from A to B and average 78.5 miles a gallon. The Energy Savings Trust has a "Smarter Driving" section on its website [www.energysavingtrust.org.uk](http://www.energysavingtrust.org.uk).

Personally I can claim to have saved lots more than 10% on journeys to Plymouth. I just try not to go there at all.

*Jeff Booth*

# SCHOOL REPORT

## DINNER SERVICE

After nearly a quarter of a century of telling schoolchildren to sit up straight, that carrots help you see in the dark and that sprouts are good for them, school dinner lady Mrs Lowry has finally hung up her apron. Staff and children wished her a fond farewell in a special assembly, during which she was presented with several gifts, one of which was a memory box to remind her of her time at the school.



## A FRUITFUL EXERCISE



All was safely gathered in – and given out again at the end of this year’s highly successful harvest festival. The school stage just managed to support the weight of all the fabulous fresh produce brought in by the children and artistically arranged by the teachers.

Following an upbeat and entertaining service in which all the children performed beautifully, PTA members divided the fruit, vegetables and flowers into bags especially decorated by the children. These were then distributed to 120 households in the town. Thanks to all those who helped.



## IF YOU DON'T WANT TO THINK ABOUT CHRISTMAS YET, THEN LOOK AWAY NOW

Don't shoot the messenger, but here's an early warning of a few dates for your festive diary. The school's Christmas Craft and Gift Fair and school Bazaar will be on Saturday, December 4th at the Memorial Hall and the School Hall respectively. It was a great success last year and promises to be even bigger and better this year.

The Art Café will be bringing all the gear for children – and artistically minded adults – to paint their own Christmas decorations, which also make excellent gifts. Some of the best local crafts, from jewellery and cards to hand-made chocolates and fudge, will be on display. The school choir will provide the entertainment and lashings of seasonal refreshments will be on offer.

Then, on Monday, December 13th, the schoolchildren will be putting on their Christmas entertainment for the more senior members of the town. Everyone's welcome, there'll be tea and mince pies and the doors open at 2pm.

*Ellen*

**MODBURY SCHOOL CHRISTMAS CRAFT & GIFT FAIR**  
Free admission!  
**SATURDAY 4<sup>TH</sup> DECEMBER**  
11am - 4pm  
At Modbury Memorial Hall, Beck St., PL21 0RF

LOCALLY MADE CRAFTS JEWELLERY  
CHRISTMAS PUDDINGS & MINCE PIES  
HOME MADE FUDGE & CHOCOLATES  
GREETINGS CARDS RAFFLE  
PAINT YOUR OWN CHRISTMAS DECORATIONS WITH THE ART CAFÉ.  
REFRESHMENTS! - Delicious Bacon Rolls, Sizzling Hot Dogs, Scrumptious Cakes, Tea & Coffee  
And starring... the SCHOOL CHOIR!

For Craft Fair see contact: Charlotte Jayward on 01548 830982  
post@modburyschool.com

And just over the road...

**THE SCHOOL BAZAAR**  
In the school Hall  
TOYS...BOOKS...CAKES...TOMBOLA...  
SECRET SANTA

IN AID OF MODBURY COUNCIL'S CHARITY FUND

## MODBURY COMMUNITY CHRISTMAS CARD

As in previous years this is a fabulous way of sending Christmas wishes to all your local friends and colleagues without having to write any Christmas cards!

The Community Christmas Card will be displayed in local shops in the weeks running up to Christmas and is a beautifully produced card by local artists – the local artists of course being children from Modbury Primary School! It will also be displayed in the December issue of the Modbury Messenger.

All you have to do is donate £5 and have your family's names added to our ever growing list of contributors. In the past few years all your support for this scheme has enabled the school to purchase much needed equipment for the children that will be enjoyed for years to come.

We not only save money by doing this fabulous card (let's face it, Christmas cards are getting pricey), we also help preserve our environment and cut down on recycling waste, save ourselves some precious time and can feel confident in the knowledge that our £5 contribution is investing in our children's future. You do not have to be a parent of Modbury School to join this wonderful scheme, anyone can be involved.

Simply put your donation in a sealed envelope and either deliver it to the School Office or take it to Pickles or Luscombe Maye.

Please remember to put on the envelope ALL the names that you wish to appear on the Community Christmas Card, this may or may not include your surname, it is entirely up to you, we will enter it on the card exactly as written on the envelope.

**The cut off date for contributions is:**  
**12<sup>th</sup> November 2010**  
**which is not too far away so please do it now and the job is done!**

If you have any queries you can contact:

**Rachel Hardy – 810440**  
Email : [rachhardy2@googlemail.com](mailto:rachhardy2@googlemail.com)

**Or Diane Cray – 830746**  
Email: [bradleycray@btinternet.com](mailto:bradleycray@btinternet.com)

**Many thanks in anticipation of your continued support**

## The Royal British Legion Modbury Branch

### November Events

#### Saturday 6 November

Coffee Morning - Modbury Club  
10 am to 12 noon

#### Thursday 11 November

##### Armistice Day

Assemble at the War Memorial at 10.50  
am for two minutes silence at 11.0 am  
*Medals to be Worn*

#### Saturday 13 November

Coffee Morning - Exeter Inn  
10 am – 12 noon  
Grand Draw in aid of  
*The Poppy Appeal*

#### Sunday 14 November Remembrance Sunday

Assemble on the Green  
at 10 am and march to  
St George's Church for the  
service at 10.30 am  
*Medals will be worn*

Crosses will be placed in the designated area near the main Church gate, one for each name inscribed on the War Memorial. Their names will be written on the crosses. Anyone who wishes to place a cross in memory of a loved one will be welcome to do so – the crosses will be available from the Poppy Distributors during the house-to-house visits.

#### Date of next Branch Meeting

**6 December 2010**

Ted Squires will be giving a short talk

**Appeal:** Due to illness we are in need of volunteers to help with the house-to-house collection for the Poppy Appeal. If you can spare an hour please contact Don Masters (830545) or David Mitchell (830446). You do not have to be a Legion member to help.

*Many thanks.....David Mitchell*



### MODBURY LOCAL HISTORY SOCIETY

When Terry Pearson from Paignton offered to come to Modbury to give our Society a talk we gladly accepted because Terry is a professional lecturer – with

world-wide connections. This time Terry's talk on 13 October was titled 'The Street Pedlars of London in Medieval Times' and was illustrated by many slides taken from various publications and paintings. It took three years to assemble the lecture which Terry will be presenting at other venues – the next being Salisbury.

Our guests at the October meeting were members of the Modbury Society and on behalf of all those present a vote of thanks was given by Frank Mullery who said that we had enjoyed a fascinating evening.

We hope that Terry will visit us again – she said that it is always a great pleasure to come to Modbury.

The next talk on 10 November should have been given by Eric Wallis MBE from Ermington. Eric has been a leading member of the South West Coast Path Association for many years. Unfortunately Eric is indisposed and will be unable to give his talk.

However we have been able to book Tony Burges from Honiton, who will be giving us an illustrated talk entitled 'The City of Exeter through the ages of the Roman, Saxon, Norman and Medieval periods until the present day'.

Meetings commence at 7.30 pm and are held in the Library in Flete House. Please ring our Chairman Mary Timmis (830768) or David Mitchell (830446) if you require transport.

Annual Subscription £7.00; Casual Visitors welcome at £2.00 per meeting.

*David Mitchell*

## Knitting Workshops

### Continental Knitting

Tuesday 5th October, 10am- 4pm

### Professional Finishing Techniques

Tuesday 2nd November, 10am- 4pm

### Basic Sock Knitting

Tuesday 23rd November, 10am- 4pm

Cost for each workshop is £40 including lunch and refreshments. *Book your place quickly to avoid disappointment.*

Call on 01548  
831911 or visit the  
showroom  
Hulu, Sentinel  
House, Poundwell,  
Modbury, PL21 0XX



[www.hulucrafts.co.uk](http://www.hulucrafts.co.uk)

## 'Greenlands Landscaping' and 'The Big Plant Company'

- Full garden Landscaping services
- Traditional walling and stonework
- Best quality garden plants supplied at competitive prices and delivered to your home
- Garden Buildings
- Garden design, advice and project management

Contact Ben on 01548 810058

<http://www.greenlandslandscaping.co.uk>

<http://www.thebigplantcompany.co.uk>

Established over 20 years



**BRIDGET THOMAS – MAR**

**Ingham Qualified Reflexologist**

**Mobile  
Reflexology**

Treatments in your own home  
Fully insured

**Tel : 01548 831629  
Mobile : 07973 506083**



### Boden Party

Come and try the new

# Boden

Winter Range

**SEE IT, TOUCH IT, TRY IT  
ON AND BUY IT!**

**Join us for a spot of  
shopping and exclusive  
offers**

*(20% off women's trousers, menswear, mini & Johnnie b PLUS 15% off everything else! OR Buy 4 items and get the cheapest for £1! Also, free delivery & returns!)*

**TUESDAY 9<sup>TH</sup> NOVEMBER  
11 AM – 9 PM**

**WHITE HART, MODBURY**

*Introduce a friend as a new Boden customer and earn £25 credit!*

**Queries? Call  
(01548)830023**



## Modbury Town Square

A very well attended public exhibition was hosted by appointed consultants Halcrow, upstairs at the White Hart Hotel on Tuesday 12th October. Three options were presented and attendees invited to fill in a questionnaire and elect a preferred option. Local school children were involved and helped to provide some valuable input whilst also feeding into their project work at school. The options, together with the findings from the day, will be available to view on the Parish Council's website [www.modburypc.co.uk](http://www.modburypc.co.uk) and at the Parish Office.

Over the next few weeks Halcrow will be looking at the results of this and the other work and surveys that they have been carrying out and will develop a single scheme based on their findings and the feedback that has come from the community.

As the scheme develops this preferred scheme will be available to view at the Parish Council's office and website after mid November.

*Town Square Group*

## AMUSING SKILLS

### Do you have any? Would you like to learn one?

Just when the winter months are getting a bit tedious, we are intending to open up the largest community building in Modbury, namely St George's, on a Wednesday evening for anyone to come and share their skill or learn from someone else.

There will be 8 sessions between January and March with a number of options on offer each week. We have already pencilled in foreign language classes, learning the guitar, a selection of arty-crafty workshops and navigation skills, but there is room for more. So if you have a skill you would be willing to share, let us know before we put the programme together.

Similarly if there is something you would love to learn, get in touch and we will investigate. We are not intending to make a profit and all tutors will be giving their time freely; there will be a charge for courses to cover costs.

Look out for further details in the December and January magazines. Meanwhile, we would love to hear from you.

Contact: Carole James: 830804  
[carole.james@btinternet.com](mailto:carole.james@btinternet.com)

## MODBURY SILVER THREADS

Our next friendly get-togethers at the Modbury Club are:

**Tuesday 9 November & Tuesday 23 November**  
Please come along for a chat, play bingo, quiz, cards  
Tea and Biscuits

The Christmas Meal will be held at Buckfast Abbey  
On: 7 December Cost: £16 per head

Anyone wishing to go please contact:  
**Liz – 01548 830313 or Zena – 01548 830923**



**22<sup>nd</sup> – 26<sup>th</sup> November 2010 10 am – 5 pm**

This will be the fourth year for the Christmas Fair with stalls selling turned wood, sculptures, silver jewellery, glass, pottery, lotions, paintings, prints, woven products, native art, Christmas gift bags, tags and cards.



The Fair supports MSF (Medecins Sans Frontieres) the Charity that provides doctors, nurses and medical aid where it is needed anywhere in the world, irrespective of race, religion or political affiliation.

We ask for VOLUNTEERS to do shifts selling coffees, teas and snacks to visitors to the Fair, mornings 10 – 12.30, lunchtimes 12.30 – 2.30, afternoons 2.30 – 5 pm. From Monday 22<sup>nd</sup> to Friday 26<sup>th</sup> November. Please say which day and time you would like to do.

Also we ask for cakes, cookies and preserves to sell to visitors from the MSF table. If you can bake something for us but cannot come to the Fair, please give it to 'Possum' at 31 Long Park, or myself at 2A Poundwell House.

ALL proceeds from the sales of teas, coffees and cakes etc go to MSF.

We will be extremely grateful. Many thanks  
*Andrew Thomas – 830664.*

## G H W Rosevear & Co

Chartered Secretaries and  
Incorporated Financial Accountants

*We specialise in the following services:*

**Accountancy and Taxation**  
**Probate and Inheritance Tax (IHT)**  
**Company Secretarial Services**  
**Legal Support Services**  
**Property Management**

We can also provide you with Book-keeping,  
Payroll Services and VAT Returns

### Office Hours

**G H W Rosevear & Co**  
3, Modbury Court, 32 Church Street  
Modbury, Ivybridge, Devon, PL21 0QR

9<sup>15</sup> a.m. – 6 p.m.  
Monday – Friday  
Weekends by appointment

**Tel: 01548 831427**  
**Fax: 01548 830977**  
**Email: [george@holbrookass.com](mailto:george@holbrookass.com)**  
**[www.accountantsouthdevon.co.uk](http://www.accountantsouthdevon.co.uk)**

## THE UNIQUE HERITAGE OF MODBURY

The current website will shortly feature a published document *The Modbury Turnpike*. Bill Scarratt, who is the author of the book *The Inscriptions on the Headstones and Memorials of St George's Churchyard*, has completed and published a book covering the history of the Modbury turnpike.

It is pleasing to report that the sales of the Inscriptions book have exceeded all expectations and we are already selling from the second reprint. Copies have been sent to the USA and Australia, as well as the UK.

*The Modbury Turnpike* publication (180 pages), is a remarkable example of excellent academic research, revealing the development of the roads suitable for transporting people and goods around Modbury. The term "Turnpike" indicates that there were fees associated with any road travel. It covers the period from 1759-1877, and contains many examples of the maps and documents that record the historic development of each Turnpike Act and lists of its associated Trustees.

The Unique Heritage of Modbury website, will feature the publication which will be downloadable.

Roy Sims

## SOUTH DEVON AONB Forthcoming Events

For parishioners who have an interest in local history, the South Devon AONB is running two workshops.

### Behind the Scenes of History

**Saturday 13<sup>th</sup> November 2010: 10.00 – 1200 hrs**  
Devon Record Office

Great Moor House, Bittern Road, Exeter  
Website: *Devon Record Office*

Under the expert guidance of Brian Carpenter (Archivist) we'll go behind the scenes at the Devon Record Office and investigate unique original documents related to the parishes of the South Devon AONB. Some documents can be photographed so bring your camera. Meet at the Devon Records Office on the edge of Exeter at 10.00hrs. See DRA website for directions.

**Free:** but places limited. **Book by 1<sup>st</sup> November**  
Note: *The original Modbury Tithe Map is held at the DRO*

### Collections Care and Cataloguing

**Saturday 27<sup>th</sup> November 2010: 10.30 - 1530 hrs**  
Slapton Ley Field Centre, Sands Road, Slapton TQ7 2QP

An introduction to the creation of a searchable catalogue and the associated maintenance and management of a local history collection.

The day will be led by Sarah Scaife from the AONB with an input from the Collections Managers from the **Cookworthy Museum**, and published guidance from the Devon Records Office.

**Free: Book by 1<sup>st</sup> November.**

To reserve a place contact: 01803 861384  
or e-mail: [enquiries@southdevonaonb.org.uk](mailto:enquiries@southdevonaonb.org.uk)

All of these workshops are free, thanks to the support from the Heritage Lottery Fund as part of the AONB's 50<sup>th</sup> Anniversary Celebrations.

Roy Sims

## 1ST MODBURY *Brownies*

We joined in with the Ivybridge units for the big litter pick and on Monday the 4<sup>th</sup> October we went around the car parks in Modbury and picked up 2 sacks of rubbish.

It was a lovely sunny afternoon. Here we are with the Brownies, parent helpers and young leaders.



We meet on a Monday at the School Hall 3:30pm – 5:30pm  
Contact No is : 01548 830301 - Mrs Lorraine Phillips

S  
t  
G  
e  
o  
r  
g  
'  
S  
C  
h  
u  
r  
c  
h

## Quiz and Puddings Night

Saturday November 20<sup>th</sup> 7.00pm for  
a prompt 7.30pm start

In Modbury Memorial Hall

Another great night out to exercise  
the brain and tempt the taste buds!

Quizmaster Nichola Winstanley  
Make up a team of 4-10

Bring your own nibbles, drink and  
glass plus bowl and spoon

Entrance £ 2 Puddings £1 Raffle





### HEDGEHOGS

belong to an ancient family. They are found in Europe, Africa, North

America and NZ. They have survived because of their ability to adapt to changing circumstances and they have few natural predators. But will the threat of modern civilisation prove too much for them or can they adapt quickly enough to survive it.

Thanks to clearing of hedgerows, busy roads, cars, domestic dogs, bonfires, litter, pesticides, strimmers, this has caused a high number of casualties. Their natural predator is the badger so if you live in an area where there are badger sets, you are less likely to see hedgehogs. A lot of urban areas see more hedgehogs in their garden and you can encourage them to stay with a little effort.

The hedgehog in the UK is now classed as **ENDANGERED**; this means numbers are declining and in 15 years we may not see the lovely hedgehog in the wild. We need to attempt to make amends, since it is clear that mankind's development has itself been responsible for causing the majority of the problems now threatening this species.

- Hedgehogs are nocturnal; if you do see a hedgehog out during the day this can be a sign of illness.
- Hedgehogs travel around 3 to 4 miles a night looking for food.
- Hedgehogs live in the wild for an average length of 3 to 4 years, if they are lucky.
- Hedgehogs have spines, when relaxed lay down when threatened they are erect. They use the spines as a defence - curling up into a ball.
- Hedgehogs are insectivores; they like to eat slugs, snails, beetles, caterpillars and earthworms.
- Hedgehogs have poor eyesight, but good hearing and smell.
- Hedgehogs in colder climates hibernate from October to March; they build a nest of leaves under patios, decking, sheds, in a pile of leaves, grass cuttings or a pile of logs.
- Hedgehogs breed May to Sept, have two litters a year and up to eight babies.

### WHY HELP WILDLIFE AND ATTRACT HEDGEHOGS INTO YOUR GARDEN

They are a valuable friend to farmers and gardeners, keeping insects and molluscs in check - they eat about 80 a day. They are harmless, very adorable mammals and a

part of the British landscape. If you want to encourage hedgehogs into your garden, put plants into your garden that attract insects. Substitute food like a small bowl of chicken cat food, or cat biscuits can be left out, but not milk. Keep your garden organic, chemicals in slug pellets are dangerous to hedgehogs. If you have a pond make sure it has sides so they can climb out. They can swim but need to be able to get out. Also place a hibernation box for them to sleep in. When replacing or installing walls or fencing, try to provide a hole so hedgehogs can continue to pass from your garden into your neighbours. When tidying the garden, take care when moving piles of leaves or cuttings and other garden rubbish as these are ideal places for hedgehogs to make a nest.

If you find any young, sick or injured hedgehogs or would like advice please contact:

*Devon Wildlife Hospital in Newton Abbot  
or Prickly Ball Farm Hospital  
in Newton Abbot*



**FULL DAYCARE  
5 DAYS A WEEK**

**Outstanding OFSTED Report  
Among top 3% of country!**

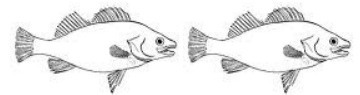
**Your 2½ - 5 year old can now  
attend preschool all day**

**Toddler Group Thursday  
1.15 - 3.45 pm, all welcome, with  
parent/adult**

**2 year olds are welcome  
Tuesday to Friday afternoons  
Please phone or drop by to enquire  
about sessions to suit your  
needs**

**Modbury Preschool  
Back St, Modbury**

01548 831477  
**Registered Charity  
No.1039616**



## **THE CODMOBILE FISH AND CHIP VAN Is now in Modbury**

Quality fish and chips  
and take away food

**Find us Wednesday nights  
7pm - 8pm Barracks Road**

Telephone orders taken  
Available for private hire

For more information phone  
07977 538506

## **MICHAEL HAGGER**

**Professional Interior  
& Exterior Painter  
& Decorator**

Friendly and reliable, trained to City &  
Guilds advanced craft level with 28  
years experience

8 Silverwell Park  
Modbury

Telephone:  
01548 830957  
Mobile:  
07977 445521



Free  
Estimates & References



**MARTIN LEY  
PLUMBING & HEATING**

- Oil Installations,  
Servicing & Repairs
- Unvented Cylinders
- Bathrooms & Showers
- General Plumbing

**Tel: Modbury 01548 830609  
Mobile: 07811 934551**

## The Modbury Inn

Brownston Street, Modbury PL21 0RQ

Tel: 01548 830275

e-mail: [colin@modburyinn.co.uk](mailto:colin@modburyinn.co.uk) [www.modburyinn.co.uk](http://www.modburyinn.co.uk)

### Christmas Menu 2010

*Homemade Soup of the Day  
Smoked Salmon and Prawn Parcels  
Sautéed Mushrooms in a White Wine & Garlic Sauce  
& Toast  
Crispy Duck Salad*

*Roast Turkey with all the trimmings  
Roast Sirloin of Beef & Yorkshire Pudding  
Smoked Haddock and Spinach  
Pan Fried Duck Breast with a Black Cherry Sauce  
Vegetarian Special of the Day*

*Christmas Pudding with Brandy Sauce  
Strawberry Pavlova with a Fruit Coulis  
Ice Cream Profiteroles with Hot Chocolate Sauce  
Treacle Tart with Custard or Ice Cream*

**Price : £16.95 per head**  
**A £5.00 per head deposit is required**  
**with the booking please**

## 3<sup>rd</sup> Grand Guitar Night

In aid of

shelter  
BOX

at  
The Modbury Inn

Friday 3<sup>rd</sup> December  
8pm

**AMERICANA LOWDOWN**

**ANDY KINGS**

**HOT DIGGEDY**

**IAN PALMER**

**KIT & CABOODLE**

**RICHARD HAWKER**

**ROB BRACE**

**STEVE & THE P45'S**

**THE TWO JOHNS**

If you have a raffle prize to donate please ring  
John Curry on 831289

## ROCKSHOP

Fridays 7.00 - 9.00 pm

Modbury School Hall  
10p Entrance

Younger Group Ages 8 - 11  
Older Group Year 7 Upwards

Hockey, Basketball  
Giant Skipping, Football  
Craft, Drama, Tuckshop  
and also for the older group: Community  
Activities, Occasional Discos  
and Live Bands  
A Christian Youth Group  
Established in Modbury  
For over 30 years

EVERYONE WELCOME

Contact David - 831589  
or Simon - 830857

## MODBURY CARING

Office Hours

Mon. 2 - 5 pm  
Thurs. 9 - 12 noon

Telephone  
01548 830118

## MODBURY BADMINTON CLUB

Memorial Hall

Tuesdays 7.30-10 pm

*New members always welcome.  
For further information please  
contact:*

*Gill Jolly  
Tel: 01548 831263*

## CHRISTMAS BINGO GOOD PRIZES



Wednesday 10 November  
Modbury Club

Eyes Down 7.30 pm  
In Aid of Modbury Show



You are invited to ...



**Dame Hannah Rogers Trust**

## **Christmas Fayre**

**Thursday 18<sup>th</sup> November 2010  
10am – 4pm**

**Kitley House Hotel, Yealampton**

Join us for a fabulous day of festive cheer in the sumptuous surroundings of Kitley House Hotel.

Enjoy fine food and a fantastic atmosphere as you cast your eyes around two marquees full of fine arts and crafts, perfect presents and sensational gifts.

Advanced Tickets **£12.50** – Entry, Lunch & a Glass of Wine  
**£9** – Entry & Devonshire Cream Tea  
Tickets on the day **£6** – Entry Only

For tickets and information contact Debbie on (01752) 898184 or email [debbie@dhrt.co.uk](mailto:debbie@dhrt.co.uk)



Registered Charity Number 306948

Come and dance to

# **Out To Grass**

Supported by local bands and 'Hot Diggedy'

**Saturday 6th  
November 2010**

**Modbury  
Memorial  
Hall**

Doors open  
at 7:30pm

Music starts  
at 8pm

**Tickets £5** available  
from Pickles, Modbury

In aid of



**St Luke's  
Hospice Plymouth**

Reg Charity No. 280681

Licensed Bar



## **Wine and Wisdom Quiz Evening**

General Knowledge and Musical Quiz

**Friday 12<sup>th</sup> November at 7 p.m. till 10.30 p.m.**

Bigbury Memorial Hall St. Anne's Chapel Bigbury

Tables for 6 people at £5 per head



Red wine, orange juice, bread, cheese and nibbles on every table  
Prizes for the winning team and fun prize for the best team name.

**No tickets but teams must register with  
Jeremy Tucker on 01548 810624**

*All nett proceeds to Rotary Charitable Causes*

The Rotary Club of Kingsbridge - Charity Registration No 10115502  
[www.rotary-uk.org/clubs/homepage.asp?ClubID=1042](http://www.rotary-uk.org/clubs/homepage.asp?ClubID=1042)

# **Cre8 Advent in Modbury**

Children's Craft Workshop  
At St. George's church  
On Saturday **27<sup>th</sup> November**

2 - 4pm

ages 5-11

£2 per child

Limited places

Booking forms from  
Caroline Barker

The Vicarage  
Modbury  
(830260)

Return a.s.a.p.



**Nichola and Phil would like to invite you to Celebrate Christmas at**

**THE EXETER INN, MODBURY – TEL 01548 831225**



**Christmas Menu available Thurs-Sat evening (or by alternative arrangement – dining room available for private party bookings seating up to 24 persons)**

**2 Courses £12.95**

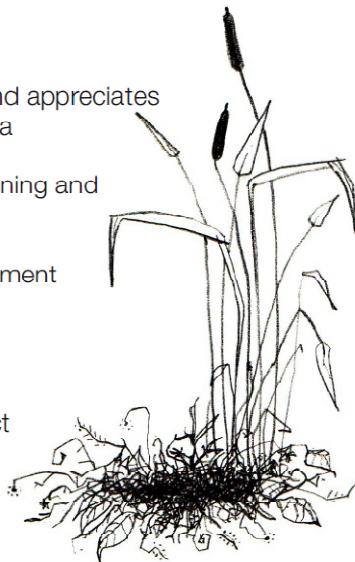
**3 Courses £15.95**

**ADVANCE NOTICE: PENSIONERS CHRISTMAS LUNCH**

**THURSDAY 16<sup>TH</sup> DECEMBER 2010 – £6.95 – 2 Courses, Crackers, Coffee & Mulled Wine**

## ARCHITECTURAL

- Modbury based designer who considers and appreciates the character and distinctiveness of the area
- Drawings produced and submitted for Planning and Building Regulation approval
- Domestic new build, conversions, refurbishment and extension projects
- Affordable and competitive fees
- Contact Jon Sullivan to discuss your project and requirements further



**NEST DESIGN**

28 Galpin Street, Modbury, Devon, PL21 0QA  
jonleighsullivan@gmail.com 07813 127017

## WALTERS CHRISTMAS TURKEYS



Our bronze free-range turkeys are traditionally reared and prepared in the time-honoured way to give a moist, flavoursome meat for the centrepiece of your Christmas table.

They meet the Golden Promise standard with welfare a top priority.

For further information or to place your order please ring the Walters family in Kingston on (01548) 810259

Home-reared sausages, bacon, hams and other meats also available to order.

*Potatoes are now available from Whympston Farm*

www.kitchensbydezine.co.uk www.kitchensbydezine.co.uk www.kitchensbydezine.co.uk  
www.kitchensbydezine.co.uk www.kitchensbydezine.co.uk www.kitchensbydezine.co.uk  
www.kitchensbydezine.co.uk www.kitchensbydezine.co.uk www.kitchensbydezine.co.uk  
www.kitchensbydezine.co.uk www.kitchensbydezine.co.uk www.kitchensbydezine.co.uk  
www.kitchensbydezine.co.uk www.kitchensbydezine.co.uk www.kitchensbydezine.co.uk  
www.kitchensbydezine.co.uk www.kitchensbydezine.co.uk www.kitchensbydezine.co.uk  
www.kitchensbydezine.co.uk www.kitchensbydezine.co.uk www.kitchensbydezine.co.uk  
www.kitchensbydezine.co.uk www.kitchensbydezine.co.uk www.kitchensbydezine.co.uk  
www.kitchensbydezine.co.uk www.kitchensbydezine.co.uk www.kitchensbydezine.co.uk  
www.kitchensbydezine.co.uk www.kitchensbydezine.co.uk www.kitchensbydezine.co.uk



## Shack's Calendar of Events

**19th November Only, come & join us to celebrate the arrival of this year's Beaujolais Nouveau**  
**Talk by Liam Steevenson from Red & White Wines**

**3 Courses for only £12**  
**1<sup>st</sup> November to 24<sup>th</sup> December**  
**Ideal for your Christmas parties**

**New Year's Eve Party 1930's Hollywood Glamour**  
**5 courses for £90 per head**  
Jazz & Swing Band, complimentary cocktail on arrival & bubbles at midnight

**Fantastic Atmosphere serving**  
**Superb Fresh Seafood**

The Oyster Shack is Open 7 days a week  
Breakfast 9 – 10.30am Lunch 12 – 2.30pm Dinner 7 – 9pm

**01548 810876**

[bigbury@oystershack.co.uk](mailto:bigbury@oystershack.co.uk) [www.oystershack.co.uk](http://www.oystershack.co.uk)

Follow us on Twitter @theoystershack

## SOUTH HAMS MOBILE LIBRARY

The Mobile Library will be at the following locations on **FRIDAY** mornings

Aylestone Park (arr 0930 - dep 0955)  
Cromwell Park (arr 1000 - dep 1015)  
The Green (arr 1020 - dep 1035)

Also on **MONDAY** afternoons (excluding Bank Holidays)

At Poundwell (arr 1600 - dep 1630)

## Modbury Tiddlers

A community run group for children aged 0-5 (and for the people who wipe their noses!)



Fridays 9.30 – 12 noon  
Modbury Memorial Hall  
£1.50 per child

Enquiries ring Helen on 01548 830862  
or Emma on 01548 830321

Noah's  ARK



Songs, stories and play  
for under 5s - bring a grownup

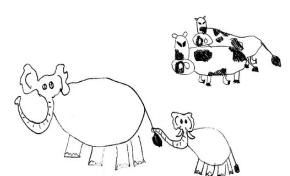


Thursday 4<sup>th</sup> November  
from 9.15 am  
This month's theme  
David and Goliath

in St George's Church, Modbury  
car park in Church Lane



For more information  
contact  
Helen Pickard on  
830862



## EDEN TREE & HEDGE CARE TREE SURGEONS

- All tree surgery under taken
- (Qualified Tree surgeon NPTC qualified)
- Felling/reduction/pruning
- 24 hr call out on trees
- Lawn mowing / strimming
- Hedge cutting & laying
- Garden clearances
- Chipping and chainsaw work
- **Fully insured to £5 million**

**Logs and wood chip for sale all year round**  
**for a free friendly quote call Adam sloman on**  
**01548 830611 or (07760 324419)**



**Wild Goose**

34 Church Street,  
Modbury, PL21 0QR

01548 830715

Stockists of Rowan &  
Colinette wool/patterns

English Blue & White China

Various Range of jewellery

Fashion Accessories

Pine Furniture

**ANTIQUE FURNITURE  
REPAIRS & RESTORATION**

Veneer Repairs, French Polishing  
Hand stripping & Re-finishing  
Wood-turning

**CANEWORK & RUSH SEATING**  
Danish Cord & Seagrass



**Guye Roberts  
MASTHEAD**  
Parsonage Road  
Newton Ferrers  
Plymouth  
DEVON PL8 1AS

01752 872805

Website : [www.guye.co.uk](http://www.guye.co.uk)  
Email : [guye@guye.co.uk](mailto:guye@guye.co.uk)




**Sue Craig**

*Painting and decorating  
with a woman's touch*

- Reliable and hardworking
- Efficient, clean and tidy
- Fully insured

Offering natural paints as an environmentally-friendly and sustainable option.

T: 01548 560098  
M: 07970 527049  
E: [susan.craig326@btinternet.com](mailto:susan.craig326@btinternet.com)



**NIGEL FROST OPTOMETRIST**  
3 Chene Court  
Modbury  
Devon  
Tel: 01548 830944

**'Look no further'**

NHS/Private Eye Examinations  
Everything from designer sunglasses to  
low cost lens and frame packages  
Contact Lens Specialists

Nigel Frost BSc(Hons) F.C.Optom  
Kathryn Poole BSc(Hons)M.C.Optom

<b>KINGSBRIDGE EYE CARE</b> No 1, The Promenade Kingsbridge Tel: 01548 856854	<b>SALCOMBE EYE CARE</b> 84 Fore Street, Salcombe Tel: 01548 843207
--	--



**TALL ORDERS**  
Landscaping & grounds  
maintenance

~lawn mowing ~hedge trimming  
~brushcutting ~clearance....  
**HARD LANDSCAPING**  
~fencing ~decking ~patios  
~natural stone walling  
**CHAINSAW & TREE WORK  
UNDERTAKEN**  
Chipper & Mini-digger available  
logs supplied  
For a friendly free quote call James  
Tall on 01548 831139 or mobile  
07967258318 (fully insured)

**Accountancy  
Services**

- Accounts
- Tax Returns
- Start-ups and Business Plans
- Bookkeeping, Payroll & VAT
- Fixed fees in advance
- Self-Assessment and CIS

Contact Alex Smith (ACA) on  
**01752 551 888**  
To arrange a free initial,  
no obligation meeting



**TaxAssist Accountants**  
The Accountancy and Tax Service for Small Business



**MR BUILDER CO.**

A friendly, honest and reliable service.  
Fully insured and guaranteed.  
Transforming any part of your home

*'from foundation to decoration'*

Call Today:

Office: 01548 831303 (Modbury)  
Mr Builder James: 07825 214368  
Mr Builder Paul: 07974 508947  
E: [jamesandpaul@mrbuilderco.com](mailto:jamesandpaul@mrbuilderco.com)

**"ONE IN FIVE TAX RECORDS INACCURATE"  
"APPROXIMATELY 4.3 MILLION MAY HAVE OVER-PAID TAX"  
"1.4 MILLION UNDER-PAYMENTS, AVERAGING £1,428"**  
*Daily Telegraph, 8<sup>th</sup> September 2010*

---

The message is clear – you cannot rely on HMRC to get it right!  
So if there are (say) 2,000 taxpayers in Modbury and the surrounding area, then  
about 400 are paying too much, or too little, tax.  
Can you afford to be one of these? Are your tax affairs in order?  
Have you checked your Tax Coding and reconciled your tax liability?

---

Through our specialist HMRC approved computer system for tax returns we can  
tell you your position – quickly and inexpensively, in complete confidence  
Initial consultations free of charge

---

**ELLIOTT & PARTNERS**  
CHARTERED ACCOUNTANTS  
TUCKERS BROOK HOUSE, 1 TUCKERS BROOK, MODBURY, DEVON PL21 0UT  
Tel: 01548 830452 e-mail : [ranwell@modbury2.eclipse.co.uk](mailto:ranwell@modbury2.eclipse.co.uk)

## Advertising Tariff for The Messenger

In order to support the publication of The Messenger, advertising relating to business or of a commercial nature will be charged at the rates shown below.

Information for community use will continue to be published free of charge.

### Single Insertion

1/9 <sup>th</sup> page	£10.55 per insertion
2/9 <sup>th</sup> page	£23.10 per insertion
1/3 <sup>rd</sup> page	£34.65 per insertion
1/2 page	£46.20 per insertion

### Three Insertions

1/9 <sup>th</sup> page	£9.25 per insertion
2/9 <sup>th</sup> page	£18.50 per insertion
1/3 <sup>rd</sup> page	£27.75 per insertion
1/2 page	£37.00 per insertion

### Six Insertions

1/9 <sup>th</sup> page	£7.00 per insertion
2/9 <sup>th</sup> page	£13.90 per insertion
1/3 <sup>rd</sup> page	£20.80 per insertion
1/2 page	£28.30 per insertion

### Eleven Insertions

1/9 <sup>th</sup> page	£4.65 per insertion
2/9 <sup>th</sup> page	£9.25 per insertion
1/3 <sup>rd</sup> page	£13.90 per insertion
1/2 page	£16.50 per insertion

Artwork of good black and white copy to be supplied. **Payment must be made in advance.**

Cheques should be made payable to 'Modbury Parish Council' and sent to The Parish Office, 6 Modbury Court, Church Street Modbury PL21 0QR.

**For further information please contact David Hansford on 01548 830222**

## MODBURY PARISH COUNCIL PARISH OFFICE

6 Modbury Court, Church Street  
Modbury  
Tel: 01548 830222  
e-mail [modburypc@tiscali.co.uk](mailto:modburypc@tiscali.co.uk)

**Hours of Business-**  
Mondays 9.00am – 1.00pm

**Parish Surgery**  
10 – 11 am every Saturday

### Planning Applications

Notices of planning applications lodged with SHDC are displayed on the Parish Noticeboard outside the Post Office. Copies of plans relating to these applications can be inspected at the Parish Office during above office hours or when a Councillor is on duty.

### Contacting Parish Councillors

Parish Councillors attend the Parish Office, on a rota basis, on Saturday mornings from 10.00 - 11.00am. Should you have any parish matter you would like to discuss come along to the Office at 6 Modbury Court. You can also call in to the Office on Mondays from 9.00am - 1.00pm and speak to the Clerk, David Hansford.

He can also be contacted by phone on 01548 830222 or e-mail at [modburypc@tiscali.co.uk](mailto:modburypc@tiscali.co.uk)

At all other times you can leave a message either by phone or e-mail (see above) or alternatively you can write a letter or speak at the public forum held at the beginning of each monthly meeting of the Parish Council, held on the second Monday of each month at 7.00pm in the annexe of the Memorial Hall.

## MESSENGER CLOSING DATE

*The closing date for the  
December Messenger is  
16<sup>th</sup> November 2010*

Please send all copy, by e-mail to [prestons@onetel.com](mailto:prestons@onetel.com) or deliver to the **Parish Office** (please note that all advertisements should be submitted **ONLY** via the Parish office – see below).

**Payment for all advertisements must be made in advance. Cheques should be made payable to 'Modbury Parish Council' and sent to The Parish Office, 6 Modbury Court, Church Street, Modbury PL21 0QR.**

**For further information please contact David Hansford on 01548 830222 (Monday mornings – or leave a message).**

The Modbury Messenger is published by The Modbury Parish Council and is printed by SHDC, Follaton House, Totnes.

*The views expressed in the Modbury Messenger do not necessarily represent those of The Modbury Parish Council.*

## SOUTH HAMS DISTRICT COUNCILLORS

Our South Hams District  
Councillors are:

**Geoffrey Fielden – 830916**  
or  
[councillorfielden@  
southhams.gov.uk](mailto:councillorfielden@southhams.gov.uk)

**Mark Lawrence – 830423**  
or  
[Cllr.Lawrence@southhams.gov.uk](mailto:Cllr.Lawrence@southhams.gov.uk)

Our representative on  
DEVON COUNTY COUNCIL  
is William Mumford and he  
can be contacted on:

**01752 873002 or**  
[william.mumford@devon.gov.uk](mailto:william.mumford@devon.gov.uk)

## PERSONAL ANNOUNCEMENTS

(Births, Deaths, Marriages, Thanks etc)

£5 per insertion - maximum 50 words  
(Subject to available space)

The Editorial Committee reserve the right to précis/abbreviate any copy submitted for inclusion in the Messenger.

# What's new at Pickles?

## *Brand name toys and games in store*

Christmas is coming and with it the stresses and strains of preparing for the festive season.

- Why fight with the crowds searching for the perfect present?
- Why waste precious time waiting in for deliveries?
- Why worry whether goods will even arrive in time?
- Why chance having to go through the pain of returning goods purchased online?

Order your toys and games at competitive prices from the comfort of your armchair and we will take delivery of your goods and arrange for you to collect them at a time to suit.

Our Christmas catalogue showcasing a selection of the branded goods can be picked up in store. Subject to availability, delivery will be within 3-5 working days for you to collect at a time to suit 6 days a week (opening hours 9am to 5pm, Monday to Saturday).

Keep business local and order now to avoid disappointment.

## *Cake decorating equipment and accessories*

We now stock a comprehensive range of cake decorating equipment and accessories for adults and children so why not come and take a look. From cup cake cases, coloured icing gels and lustre spray to icing equipment and novelty cake tins (available for purchase or hire) we are certain to save you a trip out of town.

## *Gifts for the home*

In addition to everything you would expect to find in Pickles, we have recently introduced a new range of fragrant candles, diffusers and potpourri. Other gift ideas include a fantastic assortment of draught excluders and door stops, bathroom accessories and decorative vases as well as a wide range of Joseph Joseph cookware.

*Feel free to come and browse at your leisure  
We hope you will be pleasantly surprised*

*Join us for a glass of wine after the Christmas lights have been  
switched on -Friday 26<sup>th</sup> November*

*Richard & Nikki Mitchell  
Pickles of Modbury  
2 Broad Street  
Modbury*