

# Modbury Messenger

## MODBURY CHRISTMAS LIGHTS AND LATE NIGHT SHOPPING



Our traditional Modbury Lights Night this year will be:

**FRIDAY EVENING  
27<sup>th</sup> NOVEMBER  
STARTING AT 6.00 PM**

**The high street will be closed to traffic  
from 6.00 pm to 6.45 pm**



The Laira Youth band have been organised to support the event with a march past down Church Street and Broad Street lead by the Town Crier, along with children from Modbury School.

The lights will be switched on by the headmistress of the School, Bridie Thong, and the vicar will bless the lights.

A carol or two will be sung outside Pickles - so bring your voices with you!

**FREE PARKING IN MODBURY  
Friday 27 November 5.00 to 6.00 pm  
(Also 12<sup>th</sup> and 19<sup>th</sup> December - All day)**



## **Modbury Annual Fireworks Display**

**Thursday 5th November  
Recreation Field  
Chapwell Lane, Modbury**

The bonfire will be lit at 7.00 pm  
Fireworks at 7:30 pm  
Refreshments available  
Limited parking on site  
Admission fee

Due to last year's success  
even more fireworks this year!

## **LOCAL ICON RETIRES !!**

**Les** – we're all going to miss you and your great sense of humour. The whole of Modbury wishes you a very happy retirement. Shopping at Wilkinsons will never be quite the same again (only joking Simon)! Thank you for your constant cheerfulness and enjoy the rest.

## AROUND THE CHURCHES



### St Monica's Roman Catholic Church

St Austin's Priory  
01752 892606  
Sundays  
9.00 am Mass  
*Everyone Welcome*

---

---

### Modbury Methodist Church

#### Superintendent Minister

Rev John Beadle  
(Tel 01548 852073)

#### Ministers

Rev Gordon Davis  
(Tel 01803 862350)  
Rev Margaret Johnson  
(Tel 01548 531455)

#### Sunday Services

10.30 am in  
St Monica's Church

This is a small friendly group  
Do come and join us

#### November Services

- 1<sup>st</sup> – Mr Paul Metcalfe
- 8<sup>th</sup> – Service of Remembrance  
at St George's
- 15<sup>th</sup> – Rev Margaret Johnson  
(Holy Communion)
- 22<sup>nd</sup> – Mr Adrian Dawe
- 29<sup>th</sup> – Rev John Beadle

## Remember, remember.... what?

November is the month for Remembrance, with special services across the country to commemorate those who fought and died in the two World Wars and in conflicts since. We remember the bravery of those who were prepared to sacrifice everything for their fellow men and women, and Armistice, the eleventh hour of the eleventh day of the eleventh month, reminds us of the dangers Britain has faced in the past.

As time passes, memories become stories and vivid experiences become history. The recent death of Harry Patch at the grand old age of 111 severs the link with those who fought in World War I. Those under the age of 70 have no memory of world wars or National Service; military life is often a closed book. The Royal British Legion now welcomes men and women of all ages, whether they have served in the Armed Forces or not (hint, hint!).

If we merely commemorate an event in history, we are likely to end up with that other November act of remembrance, Guy Fawkes Day. In January 1606, before the plotters had even been tried and executed, an Act of Parliament was passed to appoint 5<sup>th</sup> November in each year as a day of thanksgiving for "the joyful day of deliverance" of the King and Parliament, with everyone required to attend church and ponder on the way they had been saved from "slaughter in a most barbarous and savage manner".

We still rejoice on 5<sup>th</sup> November (even if unsure why), with bonfires, fireworks and festivities. But the deliverance bit has been long forgotten. Guy Fawkes is just one of our traditions, part of our national heritage, an event in history.

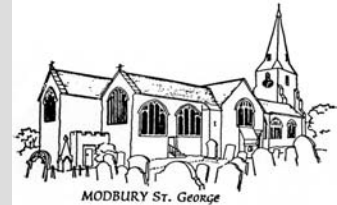
But Remembrance Sunday is not a history lesson. Oppression and terrorism are today's realities, and men and women are killed and wounded in conflicts across the world. Have we not been moved by the funeral processions in Wootton Bassett, as soldiers killed in Afghanistan are laid to rest?

True "remembrance" means honouring the bravery and sacrifice of those involved in the wars and conflicts of the past, but it also means committing ourselves to serve God and our neighbour: the two "great commandments". And our neighbour is not just the person next door, but anyone we come across who needs our help and friendship.

So should we change the name to "Commitment Sunday"? It would emphasise our task to serve God and our neighbour, but we need also to remember with gratitude those who have fought in

the past; they serve as an example and inspiration to us. May we be worthy followers.

Michael Tagent



### St George's Parish Church, Modbury *Connecting people to God*

#### SERVICES AND EVENTS NOVEMBER

##### Sunday 1<sup>st</sup> (All Saints)

9.30 am – Holy Communion

##### Tuesday 3<sup>rd</sup>

7.00 pm – Worship group practice

##### Wednesday 4<sup>th</sup>

7.30 pm – Team Council meeting

##### Thursday 5<sup>th</sup>

9.15 am (ish) Noah's Ark  
7.00 pm Magnet Committee meeting  
at The Vicarage, Modbury

##### Friday 6<sup>th</sup>

2.00 - Wedding

##### Sunday 8<sup>th</sup> (Remembrance)

8.00 am – Holy Communion  
10.30 am – Remembrance Service

##### Wednesday 11<sup>th</sup>

7.30 pm – Noah's Ark Mums' Supper  
7.30 pm – Modbury PCC

##### Thursday 12<sup>th</sup>

9.30 am – Holy Communion

##### Saturday 14<sup>th</sup>

7.00 pm – Quiz Night

##### Sunday 15<sup>th</sup>

9.30 am – Family Communion

##### Wednesday 18<sup>th</sup>

1.00 pm – Soup Lunch in  
Modbury Memorial Hall

##### Thursday 19<sup>th</sup>

9.30 am – Holy Communion

##### Sunday 22<sup>nd</sup>

8.00 am – Holy Communion  
9.30 am – Morning Prayer

##### Thursday 26<sup>th</sup>

9.30 am – Holy Communion

##### Friday 27<sup>th</sup>

6.00 pm – Christmas Lights, Modbury

**St George's & St Andrew's  
are open every day for prayer**

# THE PARISH PAGE

## PLANNING

**Modbury Parish Council recommended approval for:**

*11 Benedict Way* – Alterations and extension to dwelling;

*2 Scoldens Close* – Re-submission of application for formation of room in roof space;

*The Old Chapel, Church Street* – Re-submission of application for conversion of retail/antique shop to dwelling, subject to conditions.

## ROAD CLOSURE FRIDAY 27 NOVEMBER CHRISTMAS LIGHTS NIGHT

The A379 between Palm Cross Green and the junction of Galpin Street including all adjoining junctions will be closed to traffic between the hours of 6.00pm and 6:45pm.

## FREE PARKING IN MODBURY

There will be free parking in Modbury the evening of Friday 27 November 5.00 to 6.00 pm and all day on Saturday 12<sup>th</sup> and Saturday 19<sup>th</sup> December.

## CHANGES IN COUNCIL TAX AND HOUSING BENEFITS IN NOVEMBER

If you get Child Benefit and are near the threshold for receiving Council Tax benefit you should check to see whether you can claim Council Tax benefit. This is because from November 2nd income from Child Benefit will be disregarded when assessing your total income for Council Tax and Housing Benefit purposes.

You can call South Hams Customer Services on 01803 861275 to find out more.

## MODBURY OIL GROUP



The Modbury Oil Group has now been running for more than twelve months, courtesy of Watson Fuels. The bulk buying scheme ensures members are able to obtain domestic heating oil at a very competitive price.

If you live in or near Modbury and are interested in joining please contact:

**Peter Preston by e-mail at: [prestons@onetel.com](mailto:prestons@onetel.com)  
or by phone: 01548 831324**

## POLICE CONTACT DETAILS

**Sergeant Jane Corkhill (Neighbourhood Team Sergeant)**

[Jane.CORKHILL@devonandcornwall.pnn.police.uk](mailto:Jane.CORKHILL@devonandcornwall.pnn.police.uk)

Tel: 08452 777444 x4233

**Rachel Ward (Neighbourhood Beat Manager)**

[Rachel.WARD@devonandcornwall.pnn.police.uk](mailto:Rachel.WARD@devonandcornwall.pnn.police.uk)

**Paul O'Dwyer (Police Community Support Officer)**

[Paul.O'DWYER@devonandcornwall.pnn.police.uk](mailto:Paul.O'DWYER@devonandcornwall.pnn.police.uk)

**Stacy Thorne (PCSO)**

[Stacy.THORNE@devonandcornwall.pnn.police.uk](mailto:Stacy.THORNE@devonandcornwall.pnn.police.uk)

**All the above can be reached on 08452 777444 Extension 4225**  
Obviously if there is an emergency the public should dial 999

## JOINT POLICE/COUNCIL SURGERY: NOVEMBER

**Thursday 5<sup>th</sup> and Thursday 19<sup>th</sup>**

**from 11.00 am – 12 noon at The Parish Office  
6 Modbury Court**

Run by PC Rachel Ward, Parish Clerk Mr David Hansford  
and Police Community Support Officer, Stacy Thorn

## Modbury Information Centre

5 Modbury Court, Modbury, Ivybridge Devon PL21 0QR

Tel 01548 830159

Email [enquiries@modburytic.org.uk](mailto:enquiries@modburytic.org.uk)

Web page [www.modburytic.org.uk](http://www.modburytic.org.uk)

**Winter Opening Times  
Saturday 10am – 12 noon**



Summer is over; thank you to all our wonderful volunteers who have manned the TIC and welcomed thousands of visitors to Modbury and all you Messenger readers who have popped in to see us; I hope we have made a difference to your summer.

Although we are now closed during the week we are still open on Saturday mornings between 10am and 12 noon for all your accommodation bookings, details on local attractions, cinema and theatre listings and a whole host of exciting things to do over the winter months, as well as discount vouchers for several attractions.

There are still lots of special events taking place all round the region, lots of fun things to see and do, Coast & Countryside events as well as exciting “goings on” at Woodlands and other venues.

*Take care, see you soon!*

*Sue Birch*



## 1<sup>ST</sup> MODBURY CUBS AUTUMN 2009

We have been making the most of the remaining light evenings this half term with lots of adventures outside.

The cubs requested another kayaking evening on Decoy Park Lake and said they had a brilliant time there. At Dukers Mill they learnt how to light a camp fire and ate toasted marshmallows. The Westcombe beach clean was good fun too and helped the environment.

Hope Cove was this year's venue for the annual District Cub Camp in September. All cubs from Dartmouth, Kingsbridge, Marlborough and Modbury were invited. The theme this year was to cover everything for the Camper badge, Outdoor and Outdoor Plus Challenges. The cubs went round each base learning about and practising all their camp skills. They prepared fires and cooked their own lunches on them. A hike using compasses and following directions gave them and the leaders some magnificent views. Mini rafts and paper helicopters were made when they got back. A great wide game and camp fire was held in the dark by which time everyone was ready for bed. Each pack took part in a lovely service the following morning. Then we went down by the sea where the cubs sailed their rafts. It certainly was a fun packed weekend and the cubs from different packs knew each other quite well by then and had a great time.

We have some more fun evenings of our own at Modbury cubs coming up, with games, quizzes and cooking a cake in a mug, all before half term. If you want to know what we're doing after half term come and join us; we'd love to see you there!

At the moment we have 24 cubs including 9 girls. Several of our older cubs are gradually moving up to scouts and we wish them many more happy years in scouting. Some of our younger people on the waiting list are now old enough to join and we look forward to welcoming them in November.

*Lynn Green, Assistant Cub Leader  
and Jane Reddel, Cub Leader*



### CELEBRATING SIZZLING SAUSAGES AT THE MODBURY BUTCHER

**Wilkinson's Butchers in Modbury is celebrating British Sausage Week from November 2<sup>nd</sup> – 8<sup>th</sup>**

...and is inviting everyone to come along and try free sample sausages and cider on  
Friday November 6<sup>th</sup> from 3.30 pm until 7.00 pm  
and all day on Saturday 7<sup>th</sup>

For those with a penchant for unusual sausages it also has a special sausage competition and is inviting people to submit their own recipes. The best one will be made into a special batch and presented to the winner.

## CHRISTMAS SHOEBOX APPEAL

Each November Modbury School, Pre-School and St George's Church support the Samaritans' Purse 'Christmas Shoebox Appeal'. We fill decorated shoeboxes with small toys, stationary, toiletries and sweets.

Last year 100 shoeboxes were sent from Modbury to Eastern Europe, arriving in mid-December, and were given to children unlikely to receive any other presents.

If you would like to join in this year's appeal, please collect a leaflet outlining what to include in your box from Modbury School, St Luke's Hospice Shop or from Sue Mercer ([Tel:830190](tel:830190)). If you cannot fill a box but would like to contribute a few items, or money towards transport costs, these are also very gratefully received.

All completed boxes or donations must be handed in to Modbury School, St Luke's Hospice Shop or to Sue Mercer by Wednesday 11th November. Thank you for your support.

*Sue Mercer*

## LUPRIDGE SINGERS CONCERT



The Lupridge Singers are in earnest preparation for a Christmas Concert in St. George's Church, Modbury on Saturday December 5<sup>th</sup> at 7.30pm.

In the words of poet Robert Herrick - "What sweeter Music can we bring than a caroll for to sing the birth of this our Heavenly King." And so the singers will herald the Christmas celebrations with a programme of well known and seemingly timeless carols as well as some lesser known and new arrangements.

Adam, The Angel Gabriel, Steeple bells swungen and three Kings with incense and myrrh are all included and so do come and enjoy this feast of Christmas music under the direction of Trefor Farrow with accompanist Irina Kosogova.

*Roger Gage*

# SCHOOL REPORT

## ANOTHER SAT-ISFACTORY PERFORMANCE

Further evidence, if it were required, that Modbury School is near the top of the form when it comes to national tests has come with an excellent set of SATs results gained by last year's Year 6.

For the third year in a row all the children achieved level 4 or above, level 4 being their expected target, in both English and science. In maths, 96% of the children achieved level 4 or above, again up on both the previous years.

Seventy per cent of the children also reached level 5 in reading which is particularly encouraging because that was a target for improvement across the school last year. Sixty-seven per cent of the children reached level 5 in science.

This is an exceptionally strong performance from a group of children who hadn't managed to match the performance of the two previous years by the end of Key Stage 1. They have achieved above the national average for 'value added', which is a measure of the progress between the ends of the key stages. It's also a testament to the strength of teaching at Modbury School which has been recognised as outstanding by Ofsted.

A school spokesman said: 'Well done to all the children who have now moved on to Year 7. They were all stars and we miss them, but are always delighted to hear about their new experiences at secondary.'

## A FRUITFUL EXERCISE

All was safely gathered in – and given out again at the end of this year's highly successful harvest festival. The school stage just managed to support the weight of all the fabulous fresh produce brought in by the children and artistically arranged by the teachers.

Following an upbeat and entertaining service in which all the children performed beautifully, PTA members divided the fruit, vegetables and flowers into bags especially decorated by the children. These were then distributed to 120 households in the town. Thanks to all those who helped.

## ARE YOU READY TO ROCK?

The calendar fills up pretty quickly in the run up to Christmas, but here's one date to keep free in your diary.

For one night only, on Saturday December 12th, local band Swampash will rock the house for the annual PTA Christmas Party. Hot tunes and ice cold beer – what better way to warm up for the festive season? The venue is the Memorial Hall, the doors open at 8pm and tickets cost £6, available from Pickles and PTA reps.

## CHRISTMAS CELEBRATION

Modbury's most senior citizens are warmly invited to join the school's PTA, children, and staff for a Christmas celebration on Monday, December 14th. This is an opportunity for those other than the grandparents and parents of current pupils to be a part of the seasonal festivities at the school.

As well as entertainment from the children, there will be a raffle, tea and mince pies and other refreshments. All are welcome, doors open at 1.30pm and the entertainment begins at 2pm. If you would like to join us, please contact the school on 830312 by Wednesday, December 9th.

## IT'S A DOG'S LIFE

It's tedious to write about but it's disgusting to have to deal with. Other people's dog mess is becoming the scourge of the school. Every morning Mr Kirtley has to trawl the bus bay picking up after other people's dogs in order that the children don't step in it. Just a couple of weeks ago, so much was trodden into the school by the children that it was all over the floor of the boys' cloakroom.

If you let your dog foul around the school and then walk away, it becomes someone else's problem – not only Mr Kirtley's, but the children's. This is not merely antisocial. It's a health hazard. Once on the children's shoes, it's on the school carpets, on their fingers and in their mouths.

Dog fouling is an offence. If you can't look after your dog properly, then perhaps you should put it up for adoption by someone who will.

## MODBURY COMMUNITY CHRISTMAS CARD

As in previous years this is a fabulous way of sending Christmas wishes to all your local friends and colleagues without having to write any Christmas cards!

The Community Christmas Card will be displayed in a local shop in the weeks running up to Christmas and is a beautifully produced card by local artists – the local artists of course being children from Modbury Primary School! It will also be displayed in the December issue of the Modbury Messenger.

All you have to do is donate £5 and have your family's names added to our ever growing list of contributors. In the past few years all your support for this scheme has enabled the school to purchase much needed equipment for the children that will be enjoyed for years to come. This year we would like to raise funds towards soft furnishings for reading corners in each of the classrooms.

We not only save money by doing this fabulous card (let's face it, Christmas cards are getting pricey), we also help preserve our environment and cut down on recycling waste, save ourselves some precious time and can feel confident in the knowledge that our £5 contribution is investing in our children's future. You do not have to be a parent of Modbury School to join this wonderful scheme, anyone can be involved.

Simply put your donation in a sealed envelope and either deliver it to the School Office or take it to Pickles. Please remember to put on the envelope ALL the names that you wish to appear on the Community Christmas Card, this may or may not include your surname, it is entirely up to you, we will enter it on the card exactly as written on the envelope.

The cut off date for contributions is the 10<sup>th</sup> November 2009, which is not too far away so please do it now and the job is done!

If you have any queries you can contact us:

**Rachel Hardy – 810 440**  
Email : [rachhardy2@googlemail.com](mailto:rachhardy2@googlemail.com)

**Or Diane Cray – 830 746**  
Email: [bradleycray@btinternet.com](mailto:bradleycray@btinternet.com)

*Ellen*

## ST GEORGE'S CHURCH HARVEST SUPPER

Yet again people were entertained by a wealth of talent at this year's Harvest Supper – poems, readings, music, singing, handbells and home-written sketches.

Amidst the warm friendly atmosphere a delicious ham and beef salad, plus fruit crumbles, titillated the taste buds. Neil gave a reflective presentation of the school in Lamagaon, North India, for which we are raising £6,000 to build a new one. Incredible to think that is all it will cost. Currently pupils and staff are in a half finished house without a roof – not much fun sitting on wet chairs, working at wet desks in the rainy season.

£62 was contributed by Derek Deans raffling one of his hand-made walking sticks, £74 from the retiring collection, as well as the supper proceeds of £115, all generating £251 towards our target.

Thank you very much indeed to everyone who helped to make the evening the successful event it was.

*Rachel Taylor*

## HARVEST FESTIVAL AT ST GEORGE'S

Very many thanks to all those who generously gave fresh produce, tins, jams, eggs and other household items to support the work of The Salvation Army, the Shekinah Mission and Plymouth Women's Refuge.

We are most grateful to the congregation of the Methodist Church who also kindly donated their harvest produce to the charities, who were very pleased to receive these gifts.

Secondly, thanks to Alan Jenkins and Pauline Ryder for organising the production of the harvest loves, to Fox's Bakery for the loan of the

trays and to Barry and Annabel of Bistro 35 for the use of their oven for the baking.

Lastly thanks to all those who gave not only their time but also greenery and flowers (especially Mervyn Bennallack for the wonderful Michaelmas Daisies) to decorate the church so beautifully for Harvest Festival.

*Bridget Robinson*

## MODBURY SILVER THREADS SPRING HOLIDAY TO GREAT YARMOUTH

on

19th or 26th April 2010

Coach trip to Norwich,  
Norfolk Broads,  
Sandringham and Cromer  
for five days

Price per person:  
£260

Anyone interested in joining  
us on holiday please phone  
David on 01548 830861

# MANGO

## MODBURY WOMEN IN BUSINESS

Are you self-employed and living/working in Modbury?

If so we would like to invite you to join us.

MANGO meets on the first Friday of each month to network and discuss our professional development and other related issues.

Call Alison MacKenzie on  
01548 831492  
for more details

### Women Only BEGINNER's Running Group

Modbury, Kingsbridge & Surrounding Area

MAKE FRIENDS

HAVE FUN

GET FIT

If you are over 16yrs of age and want to get a little fitter, enjoy the fresh Devon air and meet new people, then come and join me on Sunday mornings starting on 18 October 2009

Meeting point - Aveton Gifford 'Timbers' Car Park (on the roundabout).

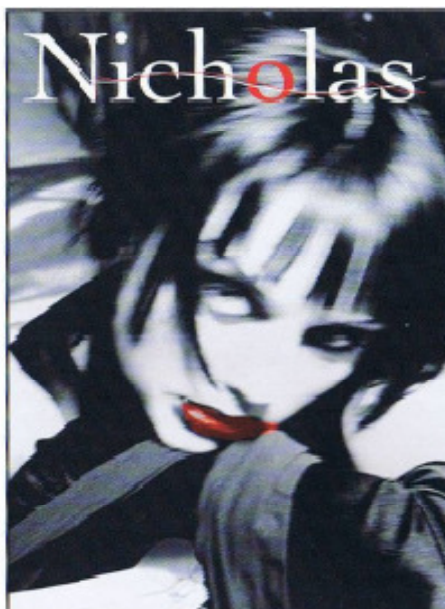
Start time: - 1045

Cost - £2 per run.

To register an interest or for further information, please ring Carol on 07968 258059 Or email: [cfstrong@btinternet.com](mailto:cfstrong@btinternet.com).



Part of the Women's Running Network  
[www.womensrunningnetwork.co.uk](http://www.womensrunningnetwork.co.uk)



Hairdressing  
**GOLDWELL**  
Hair Cosmetics

LAMAU  
Hair Care Products

ghd  
a new religion for hair

Beauty Therapy

Dermologica Face and Body Treatments  
Holistic Massage  
Slimming Wrap  
St. Tropez Tanning  
Eye Lash Perming & Tinting  
Waxing  
**dermalogica**

Early morning or late evening appointments on request

London House,  
Church Street, Modbury, S. Devon  
Tel: (01548) 830152

You are invited to ...



**Dame Hannah Rogers Trust**

## Christmas Fayre

**Thursday 19<sup>th</sup> November 2009**  
**10am – 4pm**

**Kitley House Hotel, Yealmpton**

Join us for a fabulous day of festive cheer in the sumptuous surroundings of Kitley.

Enjoy fine food and a fantastic atmosphere as you cast your eyes around two marquees full of fine arts and crafts, perfect presents and sensational gifts.

Advanced Tickets    **£12.50 – Entry, Lunch & a Glass of Wine**  
                                  **£9 – Entry & Devonshire Cream Tea**  
Tickets on the day    **£6 – Entry Only**

For tickets and information contact Debbie on (01752) 898184 or email [debbie@dhrt.co.uk](mailto:debbie@dhrt.co.uk)



Registered Charity Number 306948



Potential to Achievement

## MARS 50 – 50 LOTTERY RESULTS

OCTOBER 2009

1 <sup>st</sup> : 032	Carol James	£26.25	To take part in the 50-50 Draw contact the Membership Secretary: Lyn Weeks - 830007
2 <sup>nd</sup> : 016	Nicola Mitchell	£15.75	
3 <sup>rd</sup> : 009	Miss Eckersley	£10.50	

## MODBURY CARING

Office Hours

**Monday 2 – 5 pm & Thursday 9 – 12 noon**

**Telephone: 01548 830118**

## THE GREEN CORNER DIFFICULT TO SWALLOW – WASTE FACTS

According to WRAP, the Waste and Resources Action Programme, it is estimated that each household in the UK throws away £420 worth of food a year – 6.7 million tons – much of it fresh fruit and vegetables. Apparently a third of all the food we buy ends up in the bin, and is a major contributor to producing greenhouse gases.



Another amazing fact - 2.8 million tomatoes and 1.6 million bananas thrown away every day! I've calculated that each day in Modbury 39.1 bananas are binned.

We've all been persuaded by BOGOF deals: Buy One Get One Free which should be renamed: BOTOA Buy One Throw One Away. The main reasons for throwing away food can be grouped into two explanations, "cooking or preparing too much" and "not using food in time". I plead guilty to the first charge, but refuse to believe that "Use by" or "Best before" date are much more than an invitation by food producers and shops to throw away perfectly good food and buy fresh. Personally I can tell when a tin of tomatoes is inedible. A few weeks ago I was lucky enough to find at the back of the fridge a pot of yoghurt so old it was nearly back "in date". It was delicious, but probably not to be recommended.

On the positive side can I recommend "Freecycle" again. This is an on-line community network, run by volunteers with the aim of reducing waste, saving resources and landfill, by re-cycling household items that are no longer needed but are too good to be thrown away. Looking for a pram or a computer desk? There's probably someone locally wanting to dispose of one. You have to join the Yahoo groups at <http://groups.yahoo.com/> which is easy to do, or you can go direct to: <http://groups.yahoo.com/group/SouthBrentfreecycle/>

**Jeff Booth**

S  
t  
G  
e  
o  
r  
g  
,  
S  
C  
h  
u  
r  
c  
h

## Quiz and Puddings Night and launch of St George's recipe book

**Saturday November 14<sup>th</sup>**  
**7.00pm for a prompt 7.30pm**  
**start**

MODBURY St. George  
**In Modbury Memorial Hall**

By popular request another great night out with Quizmaster Nichola Winstanley

Bring your own nibbles, drink and glass

# MODBURY ASSOCIATION OF RECREATION AND SPORTS

**Great news at last!** We are delighted to report that MARS has been successful in securing a substantial grant of £90,000 from South Hams District Council towards the construction of a new facility at the Recreation Field. This is a tremendous achievement and with a major sponsor it now puts us in a strong position to actively seek matched funding for the first phase of the project, the building of a new changing room complex.

Nikki Mitchell, Paul Romney, Colin Low and James Ronnie worked extremely hard to put together the bid on behalf of MARS which included a formal presentation to the "Investment in the Community Initiative" Award Panel at the end of July. Clearly their hard work paid dividends as the Award Panel saw fit to recommend that a grant was considered by the SHDC Executive.

The MARS Committee would like to take this opportunity to thank District Councillor Mark Lawrence for his enthusiasm and support, and also to those members of the community who have loyally supported the MARS 50:50 prize draw over the years. With the continued support of the Parish Council and the community we are confident that we can secure the funds necessary to commence work within the next 12 months.

In addition to the above, Nikki successfully secured a £1,000 award from the Co-op Community Dividend Fund to purchase new tennis nets and some permanent goalposts on the new junior football pitch. Following recent consultation between the Devon Youth Service, Devon and Cornwall Police and local youngsters, the 'Modbury Youth Group' has been formed.

Their remit is to represent our 12-18 year olds, their needs and aspirations with a view to providing much needed facilities for this age group e.g. a shelter and skate area, at the Recreation Field.

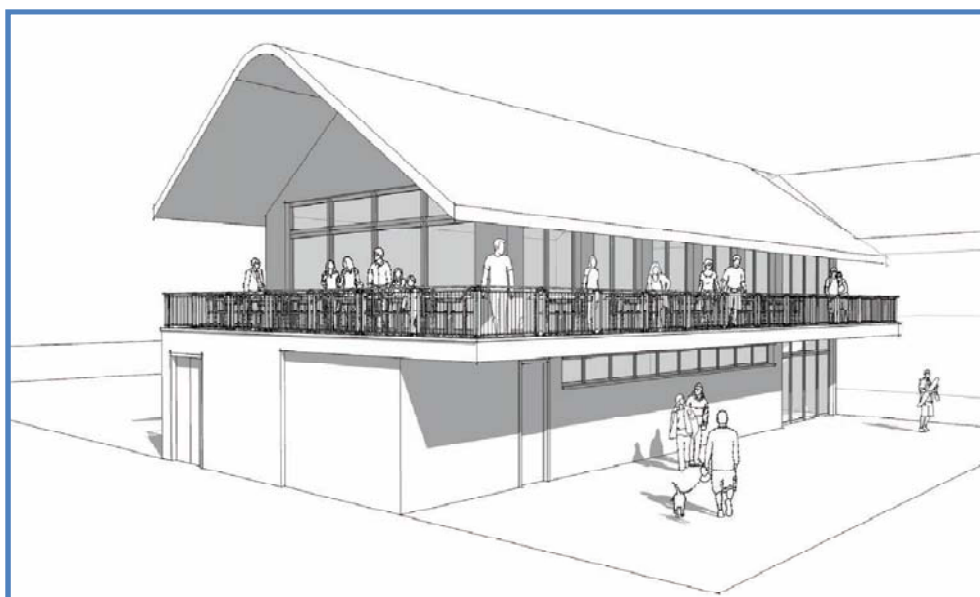
With the significant growth of Modbury Rovers Junior Football Club, extra funding is likely to be available via the Football Foundation towards the proposed first phase. The Club now has 2 teams entered into a local Sunday League (under 12s and under 10s), and a regular attendance of 30+ local boys and girls, school years 1 and upwards, attending training sessions on a Saturday morning. This has been achieved through the hard work of Colin Low, Chairperson, and the Club coaches, Peter Watts and Jim Ogle who so generously give freely of their time. In addition, we have a growing number of parent coaches - Mike Andrews, Richard Teague, Simon Garry and Andy Craig, James Ronnie who acts as referee for our junior matches, and on behalf of the seniors and juniors I would like to express our appreciation to Jim Petford, our 'gopher'. **Many thanks to each of you for making it all happen for our youngsters.**

Any members of the community who would like to know more about the proposed facility, or would like to offer their support and help in this community fundraising effort, please feel free to contact Nikki Mitchell on 01548 831160 or the committee members as listed below.

**CHAIRMAN:** Mr Peter Watts  
Tel: 01548 830648  
[petewatts@hotmail.co.uk](mailto:petewatts@hotmail.co.uk)

**TREASURER** Mr Paul Romney  
Tel: 01548 831126  
[paulandemmaromney@tiscali.co.uk](mailto:paulandemmaromney@tiscali.co.uk)

**SECRETARY** Mrs Eileen Berry  
Tel: 01548 831307  
[eileenberry@live.com](mailto:eileenberry@live.com)



## PROPOSED DESIGN OF NEW FACILITY

**Please, please keep participating in the Lottery.**

**If you don't already belong then details are available from Lyn Weeks on 830007**



# The Modbury Inn

Brownston Street, Modbury PL21 0RQ. Tel: 01548 830275  
e-mail: [colin@modburyinn.co.uk](mailto:colin@modburyinn.co.uk) [www.modburyinn.co.uk](http://www.modburyinn.co.uk)

## Christmas Menu 2009

*Homemade Soup of the Day  
Smoked Salmon and Prawn Parcels  
Sautéed Mushrooms in a white wine and garlic sauce with warm toast  
Sticky barbeque Spare Ribs*

\*\*\*\*\*

*Roast Turkey with all the trimmings and homemade Cranberry Sauce  
Roast Sirloin of Beef, Yorkshire Pudding and homemade Horseradish sauce  
Smoked Haddock with a creamy cheese sauce on buttered spinach  
Pan Fried Duck Breast with a Black Cherry sauce (£2.00 Extra)  
Vegetarian dish of the day*

\*\*\*\*\*

*Christmas Pudding and Brandy sauce  
Strawberry Pavlova with a fruit coulis  
Ice Cream Profiteroles with hot chocolate sauce  
Treacle Tart with custard or ice cream*

\*\*\*\*\*

*Coffee and Mints*

*All main courses served with fresh vegetables of the day*

**Price £16.95 per Head**

*A £5.00 per head deposit is required with the booking please*

\*\*\* AVAILABLE FOR ADVANCE BOOKINGS ONLY\*\*\*

From Tuesday 1st December to Thursday 24th December  
except Sundays and Mondays



### Cre8 Christmas

### in Modbury



Children's Craft Workshop  
At St. George's church  
On Saturday 19<sup>th</sup> December  
2- 4. pm ages 5-11  
Book by Wed 9<sup>th</sup> December  
(All children to be collected by an adult)  
£2 per child donation towards the costs

booking form from

Caroline Barker  
The Vicarage  
Modbury  
(830260)



## BATH CHRISTMAS SHOPPING

### Saturday 28 November

To raise funds for the Breakfast Club.

Leaving Modbury at 8.00 am  
and Bath at 5.00 pm

It is Christmas Market Week in Bath and so  
there will be lots of opportunities to get  
organised for Christmas.

**Cost: £17.50 per person**

Please contact Emma on 830162  
if you are interested.

# Christmas Fair

Arts and Crafts  
Market Hall, Fore Street, Kingsbridge

**10 am to 5 pm daily  
Monday 23<sup>rd</sup> to Friday 27<sup>th</sup> November inclusive**

*Stalls selling paintings, prints, cards, baskets, jewellery, sculptures,  
ceramics, antique prints, mosaics and woodturning*

Stallholders and their friends make cakes and  
cookies to sell on the MSF table. They also  
provide volunteers to sell coffees, teas and  
snacks to Fair visitors. All these sales go to MSF.



**If any readers would like to assist selling refreshments on any one of  
the days please contact Andrew Thomas (830664)  
and bring a cake with you!**

## Walters Christmas Turkeys



Our **Free-Range Bronze Turkeys** have  
been reared to the **highest welfare**  
standards on our National Trust farm in  
Kingston. They are reared to **full**  
**maturity** and enjoy **roaming around**  
their spacious paddock on a daily basis.  
We believe that this ensures the  
**highest quality** turkey for your  
Christmas dinner.

For more information or to place an  
order please ring the Walters family on  
**(01548) 810259.**

## MODBURY LOCAL HISTORY SOCIETY



We were pleased to welcome members of the Modbury Society to our meeting on October 14<sup>th</sup> when our speaker was George Nicolle from Plymouth. His subject was 'Blacksmiths in the South Hams'.

We tend to think of blacksmiths as men who just make horseshoes and fit them, but as George explained, they have been makers of all kinds of equipment such as hinges, brackets, etc, as well as agricultural tools.

George has researched this subject for about ten years and illustrated his talk with a number of magnificent line drawings. Some examples of the blacksmith's craft can be seen in such places as Ugborough Church and St Saviours, Dartmouth.

A lot of George's information was obtained from the West Devon Record Office and included samples of invoices etc. After answering some questions George was warmly thanked by Roger Gage (Chairman of the Modbury Society) who thanked him for giving us such an interesting evening. Roger intimated that our speaker would make an ideal candidate for the BBC programme 'Mastermind', such is his knowledge of the subject!

Next month we shall have an entirely different subject when we meet on **Wednesday 11th November**, when our speaker will be Eric Wallis MBE from Penquit, Ermington. Eric has researched the life of **Tutankhamen** the Egyptian pharaoh of the 18<sup>th</sup> dynasty who became boy King; his tomb was discovered in 1922.

Talks commence at 7.30 pm in the White Hart Assembly Room by kind permission of the Management. Visitors welcome @ £2.00 per meeting.

*David Mitchell*

## MODBURY NATIONAL SERVICE REUNION 2009

It is our intention to hold the reunion during the third week of November.

All ex servicemen will receive details by post.

*ACI. Roy Sims*



### The Royal British Legion Modbury Branch

The 2009 Poppy appeal launch took place on October 24<sup>th</sup>. Many thanks to all who took part in this event. On **Armistice Day**, November 11<sup>th</sup>, we shall assemble at the War Memorial for the **Two Minutes Silence**, and we invite everyone to join us.

We shall be holding the usual two coffee mornings in October and November; the first will be on 31<sup>st</sup> October in the Modbury Club; the second on Poppy Day – 7<sup>th</sup> November – at a venue to be decided. Posters will be displayed. Both mornings will be from 10.00 am to 12 noon and raffle tickets will be on sale. Prizes welcome!

On **Remembrance Day** - November 8<sup>th</sup> - we parade on the Green with the other organisations at 10.00 am before marching to St George's for the 10.30 am Service.

**Crosses** will be placed in the designated area near the main Church Gate, one for each name inscribed on the War Memorial. Their names will be written on the crosses.

Anyone who wishes to place a cross in memory of a loved one will be welcome to do so – the crosses will be available from the Poppy Distributors during the house-to-house visits.

**If you can help us with the collecting please ring Beryl and Don Masters – 830545.** Many thanks.

Date of next Branch Meeting – 7<sup>th</sup> December 2009.

*David Mitchell*

**A SOUP & ROLL LUNCH**  
With Puddings, Tea & Coffee  
on  
**Wednesday 18th November**



**12 NOON-2PM**  
IN

**THE MEMORIAL HALL**

Tickets on the door £2.50  
puddings to be purchased at 60p  
proceeds are for local charities  
transport requests and queries contact 830133

**THE GARDEN PROJECT COMPANY**  
PROFESSIONAL LANDSCAPE CONSTRUCTION

Brick, Wood & Stonework  
Decking, Fencing & Turfing  
Patio's, Pergolas & Ponds  
Garden Buildings  
Planting & Maintenance  
Groundworks

**01548 852436**  
**07967 746361**  
gpc@higherleigh.co.uk  
Established 17 years

**MODBURY SILVER THREADS NOVEMBER**

**Tuesday 10<sup>th</sup>**  
Meeting at Club – 1.45 pm

**Tuesday 24<sup>th</sup>**  
Meeting at Club – 1.45 pm

# BISTRO 35

Licensed Restaurant  
and Wine Bar

## Winter Opening Times

### Wednesday to Saturday

Bar: 6.00 pm – 11.00 pm

Restaurant: 6.00 pm – 9.00 pm

### Sunday

Bar: 11.30 am – 11.00 pm

Restaurant: 12 noon – 2.30 pm

& 6.00 pm – 9.00 pm

**Closed Monday and Tuesday**

**MODBURY (01548) 831273**

**35 CHURCH STREET MODBURY DEVON**



The **Nearly Naked**  
Veg Company  
Our farm, your table, no fuss

## South Hams Veg Boxes from the *Nearly Naked Veg Company!*

Veg grown *by us*, picked *by us*, then  
delivered *by us* to your home.

Always grown without any unnecessary  
chemicals.

You can order **on-line** as a one-off  
or set up a regular order.

**Call Sam** for more info or to  
place your order over the phone.

Tel: 01364 646106

info@nearlynakedveg.co.uk

www.nearlynakedveg.co.uk

**Mrs C V Harrington MCSP; MMACP**

*Chartered Physiotherapist*

Registered with the Health Professional Council  
And all Health Insurance Companies

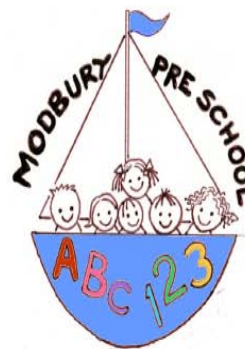
### DOMICILIARY SERVICE / HOME VISITS



Tel: 01548 810023

Mobile: 07776393927

Member of the Organisation of  
Chartered Physiotherapists in Private Practice



## FULL DAYCARE

## 5 DAYS A WEEK

Outstanding OFSTED Report  
Among top 3% of country!

Your 2½ - 5 year old can now  
attend preschool all day

### Toddler Group Thursday

1.15 - 3.45 pm, all welcome, with  
parent/adult

### 2 year olds are welcome

Tuesday to Friday afternoons

Please phone or drop by to enquire  
about sessions to suit your  
needs

## Modbury Preschool

Back St, Modbury

01548 831477

Registered Charity

No.1039616



SHDC is encouraging local  
community groups to join  
the country's biggest ever  
litter campaign – The Big  
Tidy Up 2009.

Organised by Keep Britain  
Tidy the aim is to help  
groups get together to  
clean up the area where  
they live and show the rest  
of the country that South  
Hams residents care about  
their environment.

Getting involved is easy –  
just visit  
[www.thebigtidyup.org](http://www.thebigtidyup.org)  
to  
register and wait for the kit  
containing tabard bibs,  
refuse sacks, posters,  
badges, stickers and a guide  
on carrying out tidy ups  
safely. Each group can also  
create an online profile  
page for its news and  
photos.

### Contact details:

Customer Services on

01803 861234

or Keep Britain Tidy


(Dickie Felton)

01942 612617/

07768 880016

[dickie.felton@encams.org](mailto:dickie.felton@encams.org)

hardware...and much more!



# Pickles of Modbury

*Christmas Choice!*

Why not pay a visit to Pickles of Modbury to see our new range of Christmas gift ideas, toys and stocking fillers for all generations!

Don't forget we stock a great selection of household, outdoor items and all those small bit & bobs...

**House & Home**

- Cookshop ● Laundry
- Storage ● Dry Cleaning
- Key Cutting
- Delivery Service

**DIY** - Power, Tools, Paint, Ironmongery, Security

**Garden**

- Tools ● Gift Sets
- Maintenance ● Bird Care

**Pet Care**

- Food ● Toys
- Accessories

**Sport & Leisure**

- Toys & Games ● Car Care
- Camping ● Fishing
- Wellies & Gloves

**Fuel**

- Gas ● Coal ● Wood

**10% NOVEMBER DISCOUNT**

Get wrapped up this Winter!  
**HATS, GLOVES & SCARVES**

10% Discount off any purchase of HATS, GLOVES & SCARVES. One Voucher per household. Valid until 30th November 09. Not to be used in conjunction with any other lines. Voucher must be produced upon purchase.

**Pickles of Modbury**  
2 Broad Street, Modbury PL21 0PS  
Tel: 01548 830412

# ROCKSHOP

Fridays 7.00 - 9.00 pm

**Modbury School Hall**  
*10p Entrance*

Younger Group Ages 8 - 11  
Older Group Year 7 Upwards

Hockey, Basketball  
Giant Skipping, Football  
Craft, Drama, Tuckshop  
and also for the older group:  
Community Activities  
Occasional Discos  
and Live Bands

A Christian Youth Group  
Established in Modbury for over 30 years

**EVERYONE WELCOME**  
Contact David - 831589  
or Simon - 830857

## G H W Rosevear & Co.

Chartered Secretaries and Incorporated Financial Accountants  
In Public Practice

**"Credit Crunch"**  
Under financial pressure and not sure which way to turn?  
*Consult us for a way forward*

Licensed Debt Adjusters & Counsellors  
Licensed Debt Collectors

**"Self-Assessment Tax Return"**  
All deadlines past!

Tax Payments  
Struggling to meet them?  
Consult us for a way forward

Licensed Credit Brokerage & Credit Reference Agency

We can help you, or prepare your return for you. Together with preparing your Accounts, as well as Bookkeeping, VAT and Payroll Services

**Incorporated Financial Accountants**

Office Hours: 9.15 am to 6 pm  
Monday to Friday  
Weekends by appointment

3 Modbury Court, 32 Church Street  
Modbury, Ivybridge  
Devon PL21 0QR


Telephone: 01548 831427  
Fax: 01548 830977  
Email address: george@holbrookass.com

## MODBURY BADMINTON CLUB

Memorial Hall  
Tuesdays 7.30 - 10 pm

*New members always welcome.  
For further information please contact:*

Gill Jolly  
Tel: 01548 831263



**NIGEL FROST OPTOMETRIST**  
3 Chene Court  
Modbury  
Devon  
Tel: 01548 830944

**'Look no further'**

NHS/Private Eye Examinations  
Everything from designer sunglasses to low cost lens and frame packages  
Contact Lens Specialists

Nigel Frost BSc(Hons) F.C.Optom  
Angela Hickman BSc(Hons) F.C.Optom  
Kathryn Poole BSc(Hons)M.C.Optom

**KINGSBRIDGE EYE CARE**    **SALCOMBE EYE CARE**  
No 1, The Promenade    84 Fore Street  
Kingsbridge    Salcombe  
Tel: 01548 856854    Tel: 01548 843207

## Wild Goose

34 Church Street,  
Modbury, PL21 0QR

01548 830715

Stockists of Rowan & Colinette wool/patterns

English Blue & White China

Various Range of jewellery

Fashion Accessories

Pine Furniture

## SOUTH HAMS MOBILE LIBRARY

The Mobile Library will be at the following locations on **FRIDAY** mornings

Aylestone Pk (arr 0930 - dep 0955)  
Cromwell Park (arr 1000 - dep 1015)  
The Green (arr 10.20 - dep 10.35)

Also on **MONDAY** afternoons (excluding Bank Holidays) at Poundwell (arr 4.00 pm - dep 4.30 pm)

# Capers

- Outside Catering
- Event Organising
- Dependable & Professional
- Menus planned to suit your tastes
- Holiday Home Catering & Welcome Treats

Ally Gates: 01548 810394 allygates65@aol.com

## Bella's Flowers

Flowers for all occasions,  
Delivery service available

LISA CHADWICK,  
Qualified Florist,  
Specialising in Weddings,  
Funerals and Flowers for  
all Occasions



1 Broad Street, Modbury,  
Devon, PL21 0PS  
Phone/Fax 01548 830048

Email: bellas-flowers@btconnect.com

## ANTIQUE FURNITURE REPAIRS & RESTORATION

Veneer Repairs, French Polishing  
Hand stripping & Re-finishing  
Wood-turning

**CANEWORK & RUSH SEATING**  
Danish Cord & Seagrass



**Guye Roberts**  
**MASTHEAD**  
Personage Road  
Newton Ferrers  
Plymouth  
DEVON PL8 1AS  
01752 872805

Website: www.guye.co.uk  
Email: guye@guye.co.uk

## Accountancy Services

- Accounts
  - Tax Returns
  - Start-ups and Business Plans
  - Bookkeeping, Payroll & VAT
  - Fixed fees in advance
  - Self-Assessment and CIS
- Contact Alex Smith (ACA) on

**01752 551 888**

To arrange a free initial,  
no obligation meeting

## SHORT MAT BOWLS

The Modbury Short Mat Bowls  
Club

**EVERY WEDNESDAY**

7.00 pm at the  
Memorial Hall

**New members are  
welcome.**

*Come along and try it – it's fun*

Pauline 830133



**MARTIN LEY**  
PLUMBING & HEATING

- Oil Installations,  
Servicing & Repairs
- Unvented Cylinders
- Bathrooms & Showers
- General Plumbing

Tel: Mobury 01548 830609  
Mobile: 07811 934551

## AQUA HAIR DESIGN

Modern Organic Products  
offers a new standard in  
professional haircare.  
It creates simple organic  
solutions.



**Late opening - Fridays**  
**No 7 Modbury Court**  
**01548 831260**



MR BUILDER CO.

A friendly, honest and reliable service.  
Fully insured and guaranteed.  
Transforming any part of your home

*'from foundation to decoration'*

Call Today:

Office: 01548 831303 (Modbury)  
Mr Builder James: 07825 214368  
Mr Builder Paul: 07974 508947  
E: jamesandpaul@mrbuilderco.com



## TALL ORDERS

Landscaping & grounds  
maintenance

- ~lawn mowing ~hedge trimming
- ~brushcutting ~clearance....
- HARD LANDSCAPING
- ~fencing ~decking ~patios
- ~natural stone walling
- CHAINSAW & TREE WORK
- UNDERTAKEN
- chipper & mini-digger available
- logs supplied

For a friendly free quote call James  
Tall on 01548 831139 or mobile  
07967258318 (fully insured)



**Gas Works & Servicing**  
**Energy Efficient Heating**  
**Bathrooms & Showers**  
**All Hot Water Systems**  
**Maintenance & Repair**  
**Eco Energy Systems**



Based in Modbury



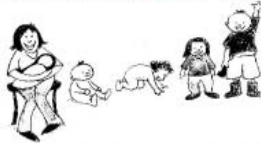
Contact us now for a free estimate:  
 Tel: **01548 830918** or Mob: **07863 128489**  
 info@wrightplumbing.co.uk www.wrightplumbing.co.uk



## MODBURY TIDDLERS

A Community Run Group for Small People aged  
 0 - 5 (and for the people who wipe their noses!)

**PLAYTIME FOR THEM!**  
**COFFEE AND A CHAT FOR US!**



Fridays 9.30 - 12 noon     £1.50 per child  
 @Modbury Memorial Hall  
 Enquiries ring Angie: 01548 831139



## **EDEN TREE AND HEDGE CARE**

- All tree surgery undertaken (NPTC Qualified)
- Felling/reduction/pruning
- 24 hr call out on trees
- Lawn mowing
- Hedge cutting
- Garden clearances
- Chipping and chainsaw work
- **Fully insured to £5 million**

- Strimming
- Turfing
- Pressure washing

**Logs and wood chip for sale all year round**  
**For a free friendly quote call Adam Sloman on**

**01548 830611 or (07760 324419)**



**Form and Function**  
**Working in Harmony**

**Our services provide you with a one point of contact for all your needs and we offer both a trustworthy and reliable service but also one that remains personalised to you.**

Our team of highly trained kitchen designers can cater for your every need  
 - no matter how small or large it may be.

t. 01548 830 819    f. 01548 831 519  
 27 Church Street    Modbury    Devon    PL21 0QR

info@kitchensbydezine.co.uk  
 www.kitchensbydezine.co.uk

## Advertising Tariff for The Messenger

In order to support the publication of The Messenger, advertising relating to business or of a commercial nature will be charged at the rates shown below.

Information for community use will continue to be published free of charge.

### Single Insertion

1/9 <sup>th</sup> page	£10.50 per insertion
2/9 <sup>th</sup> page	£21.00 per insertion
1/3 <sup>rd</sup> page	£31.50 per insertion
1/2 page	£42.00 per insertion

### Three Insertions

1/9 <sup>th</sup> page	£8.40 per insertion
2/9 <sup>th</sup> page	£16.80 per insertion
1/3 <sup>rd</sup> page	£25.20 per insertion
1/2 page	£33.60 per insertion

### Six Insertions

1/9 <sup>th</sup> page	£6.30 per insertion
2/9 <sup>th</sup> page	£12.60 per insertion
1/3 <sup>rd</sup> page	£18.90 per insertion
1/2 page	£25.70 per insertion

### Eleven Insertions

1/9 <sup>th</sup> page	£4.20 per insertion
2/9 <sup>th</sup> page	£8.40 per insertion
1/3 <sup>rd</sup> page	£12.60 per insertion
1/2 page	£16.80 per insertion

Artwork of good black and white copy to be supplied. **Payment must be made in advance.**

Cheques should be made payable to 'Modbury Parish Council' and sent to The Parish Office, 6 Modbury Court, Church Street Modbury PL21 0QR.

**For further information please contact David Hansford on 01548 830222**

## MODBURY PARISH COUNCIL PARISH OFFICE

6 Modbury Court, Church Street  
Modbury  
Tel: 01548 830222  
e-mail [modburypc@tiscali.co.uk](mailto:modburypc@tiscali.co.uk)

**Hours of Business-**  
Mondays 9.00am-1.00pm

**Parish Surgery**  
10 – 11 am every Saturday

### Planning Applications

Notices of planning applications lodged with SHDC are displayed on the Parish Noticeboard outside the Post Office. Copies of plans relating to these applications can be inspected at the Parish Office during above office hours or when a Councillor is on duty.

### Contacting Parish Councillors

Parish Councillors attend the Parish Office, on a rota basis, on Saturday mornings from 10.00 - 11.00am. Should you have any parish matter you would like to discuss come along to the Office at 6 Modbury Court. You can also call in to the Office on Mondays from 9.00am - 1.00pm and speak to the Clerk, David Hansford.

He can also be contacted by phone on 01548 830222 or e-mail at [modburypc@tiscali.co.uk](mailto:modburypc@tiscali.co.uk)

At all other times you can leave a message either by phone or e-mail (see above) or alternatively you can write a letter or speak at the public forum held at the beginning of each monthly meeting of the Parish Council, held on the second Monday of each month at 7.00pm in the annexe of the Memorial Hall.

## MESSENGER CLOSING DATE

*The closing date for the  
December Messenger is  
16<sup>th</sup> November 2009*

Please send all copy, by e-mail to [prestons@onetel.com](mailto:prestons@onetel.com) or deliver to the **Parish Office** (please note that all advertisements should be submitted **ONLY** via the Parish office – see below).

**Payment for all advertisements must be made in advance. Cheques should be made payable to 'Modbury Parish Council' and sent to The Parish Office, 6 Modbury Court, Church Street, Modbury PL21 0QR. For further information please contact David Hansford on 01548 830222.**

The Modbury Messenger is published by The Modbury Parish Council and is printed by SHDC, Follaton House, Totnes.

*The views expressed in the Modbury Messenger do not necessarily represent those of The Modbury Parish Council.*

## SOUTH HAMS DISTRICT COUNCILLORS

Our South Hams District  
Councillors are:

**Geoffrey Fielden – 830916**

or

[councillorfielden@  
southhams.gov.uk](mailto:councillorfielden@southhams.gov.uk)

**Mark Lawrence – 830423**

or

[Cllr.Lawrence@southhams.gov.uk](mailto:Cllr.Lawrence@southhams.gov.uk)

Our representative on  
DEVON COUNTY COUNCIL  
is William Mumford and he  
can be contacted on:

**01752 873002 or**

[william.mumford@devon.gov.uk](mailto:william.mumford@devon.gov.uk)

## PERSONAL ANNOUNCEMENTS

(Births, Deaths, Marriages, Thanks etc)

£5 per insertion - maximum 50 words. (Subject to available space)

The Editorial Committee reserve the right to précis/abbreviate any copy submitted for inclusion in the Messenger.



## Modbury Christmas Craft and Gift Fair

• Free Admission •

Locally made crafts, gifts, jewellery,  
greeting cards and glitter tattoos.

Refreshments

Santa's Grotto opens at 1pm

Saturday 5th December 2009 11am - 4pm  
Modbury Memorial Hall, Back Street  
Modbury PL21 0RF (opp. school)

*And just over the road.....*

## A Christmas Bazaar in the School Hall

11am - 2pm

Toys, books, cakes, tombola, secret Santa  
and stalls for the children

Everyone welcome!

for further information please contact Charlotte Aylward (Possum)  
on 01548 830592 or [possumaylward@aol.com](mailto:possumaylward@aol.com)

In aid of Modbury School reg. charity 1070810

