



Modbury Messenger



MODBURY'S CHRISTMAS LIGHTS....

.....will be switched on...

FRIDAY 28TH NOVEMBER AT 6.00 PM

Please come along and join in the festivities and LATE NIGHT SHOPPING.

6.00 pm - Switching on the lights and

Kingsbridge Silver Band

6.30 pm - Samba Band

MODBURY CHAMBER OF COMMERCE

We are running a raffle on behalf of the Modbury Christmas Lights Fund. Our aim is to raise £1,000 to improve, update and make our lights more environmentally friendly for 2009.

We have some wonderful prizes:

1st Prize: 15" LCD TV with Freeview & built in DVD

2nd Prize: 7" Portable LCD DVD player

3rd Prize: 7" Digital Photo Frame

The tickets will be on sale from 1st November at £1.00 each in participating shops/businesses.

Please support the Christmas Lights

If you would like to help us reach the target by selling tickets please contact Kay on 01548 830715 or call in at Wild Goose, Church Street, Modbury.

BEAT THE CROWDS! SUNDAY OPENING



Do your Christmas Shopping in Modbury. A selection of shops will be opening on Sundays during December pre-Christmas.

Modbury Fireworks Club Grand FIREWORK DISPLAY

Wednesday 5th November

Venue: RECREATION FIELD
Time: Bonfire lit 7:00pm Fireworks 7:30pm
Admission: £3 adult £2 child

AROUND THE CHURCHES



St Monica's Roman Catholic Church

St Austin's Priory
01752 892606
Sundays
9.00 am Mass
Everyone Welcome

Modbury Methodist Church

Superintendent Minister

Rev John Beadle
(Tel 01548 852073)

Ministers

Rev Gordon Davis
(Tel 01803 862350)
Rev Margaret Johnson
(Tel 01548 531455)

Sunday Services

10.30 am in
St Monica's Church

This is a small friendly group
Do come and join us

November Services

2nd – Dr John Prebble

9th – Service of
Remembrance @ St George's

16th – Rev Gordon Davis
(Holy Communion)

23rd – Rev John Beadle

30th – Mrs Helen Hibbard

Team GB – Team Modbury – going for gold



Dear Friends

The Olympics seem a long time ago now, but last month 350 athletes paraded in London and many joined them to celebrate. Somehow, there was a different feeling this year, an excitement and confidence and of course many medals.

What made the difference? Was it simply money? Can you buy team spirit, success and a willingness to work together? If it was all down to money, then what hope is there now that the haunting echo of “global recession” is heard everywhere?

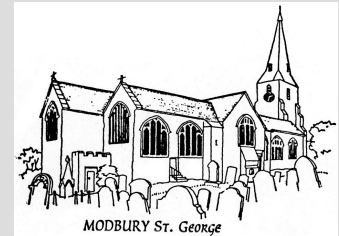
We put our trust in money, we thought it was safe, we thought it was the answer, but now confidence is ebbing away and many are being forced to rethink their values and what exactly is the gold that they are “going for”.

Christians believe that through Jesus Christ, God the Father invites us to be part of his team sharing the common goal of the Kingdom of God. Joy is the excitement he gives to us; faith the confidence that enables us to excel. It's a team effort.

At Remembrance we call to mind those who have served or are now serving in the armed forces; where teamwork is vital. They certainly don't do it for the money! You cannot buy loyalty or bravery.

The Church is here to help everyone find a place in the Lord's team and a goal which is unaffected by credit crunch or recession because it is eternal – now that is “going for it”!

Neil Barker



St George's Parish Church, Modbury

Connecting people to God

SERVICES AND EVENTS IN NOVEMBER

Saturday 1st

10.00 am – 1.00 pm
Church Car Park Tidy up

Sunday 2nd

10.30 am – Family Communion
6.00 pm – Christianity explored

Tuesday 4th

7.00 pm – Magnet Committee Mtg.

Wednesday 5th

7.30 pm – Ministry Course - Music

Sunday 9th (Remembrance)

8.00 am – Holy Communion
10.30 am – Remembrance Service
6.00 pm – Christianity Explored

Wednesday 12th

7.30 pm – Ministry Course –
Pastoral Visiting
7.30 pm – Modbury PCC

Sunday 16th

10.30 am – Holy Communion
6.00 pm – Christianity Explored

Wednesday 19th

12 noon – 2.00 pm – Soup Lunch in
the Memorial Hall
7.30 pm – Ministry Course –
Visiting the Sick

Thursday 20th

10.00 am – Noah's Ark Planning

Sunday 23rd

8.00 am – Holy Communion
9.30 am – Family Service

Wednesday 26th

7.30 pm – Ministry Course –
Hatch, Match & Dispatch

Friday 28th

6.00 pm – Christmas Lights in
Modbury

WEEKDAYS

9.00 am Morning Prayer

THURSDAYS

9.30 am Holy Communion

PARKING ON DOUBLE YELLOW LINES

There is an increasing problem with motorists parking on double yellow lines. Particular problem areas include Brownston Street, Broad Street and Galpin Street. On two separate occasions during the last month ambulances attending emergencies have been held up by this inconsiderate and illegal practise.

The Parish Council have requested the Parking and Traffic Wardens to focus on this issue and take action. You have been warned!

PLANNING

Modbury Parish Council recommended approval of:

5 Silverwell Park – Erection of single storey conservatory;

Sexton Farm (Ermington) – Provision of new access;

14 Oakwood Drive – Replacement of conservatory with single storey extension;

Ridgeway – Erection of 2 storey extension and double garage;

6 Brownston Street – Conversion of loft, re-cladding of existing roofs, re-roofing and conversion of washroom to study, washroom and bathroom;

Work to trees at 24 Church Street, Sprindleberry Back Street and 53 Brownston Street.

SHDC approved:

Little Sheepham – Renewal of permission to convert barn to annexe accommodation (MPC recommended approval);

5 Oakwood Drive – Demolition of garage and erection of new extension (MPC recommended approval);

Kenedon Farm – Detailed plans (MPC recommended refusal);

11 Oakwood Drive – Work to oak tree (MPC recommended approval).

ROAD CLOSURE

Brownston Street to Mary Cross – 6th/7th January 2009.

MARS 50 – 50 LOTTERY RESULTS

September 2008

1 st :028	Brenda Lee	£27.50
2 nd :008	Jim Petford	£16.50
3 rd :017	Richard Mitchell	£11.00

October 2008

1 st :020	Mrs D Scholey	£27.50
2 nd :019	Mr C Downing	£16.50
3 rd :007	Brian Weeks	£11.00

DON'T MISS THIS EVENT!

A SOUP AND ROLL LUNCH with TEA OR COFFEE for £2.50

**Wednesday 19th November
12 noon – 2.00 pm
in The Memorial Hall**

Contributions of unwanted gifts and homemade fare welcomed for sale on the Gift and Food Stalls

Shop early for Christmas bargains!

Transport within Modbury can be arranged - Contact 830595

**Proceeds to
St George's Church and
The Shelter Box Appeal**

MODBURY SILVER THREADS

NOVEMBER

Tuesday 4th
Meeting in Club 1.45 pm

Tuesday 18th
Meeting in Club 1.45 pm

MODBURY CHRISTMAS CRAFT FAIR

The Modbury Christmas Craft Fair will be held on

SATURDAY 29TH NOVEMBER

**At the Modbury Memorial Hall
Opening times 2.00 – 4.30 pm**

...and it will be free entry to the public. Come and stock up on your Christmas presents from a selection of talented local crafters selling greeting cards, postcards, jewellery, Giclee Prints, bags, educational toys, bath bombs, willow gifts, slate signs and much more.

Father Christmas will be making a guest appearance and refreshments will be available, with all proceeds going to Modbury Lunch Club.

Hope to see you there!

If you are a local crafter and interested in booking a stall please contact Charlotte Aylward on 01548 830592 or email possumaylward@aol.com for booking information

ABBOTSWAY WALK

5th October 2008



Around 500 people took part in the above annual event which traces the route that Abbots of old were said to take between the Abbeys of Tavistock and Buckfastleigh.

Twenty of these were from Modbury led by team leaders Rob West, Brian Weeks and Tony Brown. What a day! About 26 miles were covered including an enforced long detour imposed by the organisers at the last minute due to the dangerously swollen Avon and Plym rivers. Just under 11 hours were spent traversing all kinds of energy sapping terrain including seemingly endless bogs. Everyone got soaked and navigation skills were tested to the full. We were told that the drop out rate was around 50% so for 2 of the Modbury teams to complete was no mean achievement.

Well done to all from the team leaders and especially to the first time youngsters, Lauren Butt and Robert Brown. A great challenge and experience for everyone and proceeds go to local youth organisations. We look forward to next year. Any takers?



This is intended for those who are not regular or experienced walkers and is an opportunity to socialise with others on one of the several path routes

around Modbury. My first led walk will be around Little Modbury and back through Rogues Roost – approximately 2.5 miles. If you have never ventured very far before, now is the chance to come along and enjoy something different with others. I would be most pleased to guide you and to introduce you to future walks where I will be taking you to other places of interest in the vicinity of Modbury and maybe beyond.

The first walk will start from the Lower Poundwell Car park on:

Sunday 23rd November at 10am.

A voluntary contribution of £1 to participate is invited

I look forward to meeting you.

Sophie Weeks

Any questions? Telephone 830007



THE NATIONAL TRUST SOUTH HAMS CENTRE AUTUMN AND WINTER EVENT

As we are now in autumn after a rather disappointing summer weather-wise, our local National Trust Centre has a good varied programme for the winter season and you never know we may yet have some more sunshine.

In spite of the vagaries of our climate we have had a very full and enjoyable summer programme with coach trips as far away as Somerset and Cornwall and our own county of Devon. Also, some delightful guided walks locally at comfortable distances of approximately 4-5 miles each. Our Grand Summer Fayre, our main fund-raising function, was held as usual in the Market Hall in Kingsbridge and was a great success. Always a friendly occasion where old friends meet up and relax over a cup of coffee.

Our autumn programme has plenty of variety. We have some very interesting talks at West Alvington Village Hall at regular intervals throughout the winter. There is a coffee morning at Thurlestone Hotel on January 29th – a great opportunity to meet new people and catch up with old friends. February 11th we have our winter lunch at the Cottage Hotel at Hope Cove – again a very popular and social occasion.

Our AGM will also be at the village of West Alvington, plus an illustrated talk on the Royal Borough of Dartmouth by John Ridson. Entrance fee for all the talks is £2.50.

If anyone would like to enquire about joining us at the South Hams Centre our Membership Secretary, Mrs Sheila Barnes, would be very pleased to hear from you. Tel: 01548 852751.

NATIONAL SERVICE REUNION 2008

It is our intention to hold the reunion during the last week of November, possibly the 27th or 28th, and as usual it will be held in the Modbury Club. I will be sending confirmation to all those who attended last year.

AC.I. Roy Sims. RAF

MODBURY HERITAGE WEBSITE

We continue to receive requests from around the world for Historic Information, as a result of our excellent web site. I have recently checked and a figure of between 500 and 1000 hits per month is being recorded, which is a staggering figure. I would like to express my thanks to the History Society and Nancy Savery and Mary Rose-Rogers in particular for dealing so efficiently with the queries, and to Pat and Victoria Hammerstein for maintaining our excellent web site.

Roy Sims. Heritage Co-ordinator

SCHOOL REPORT

First off this month, an apology for last month's missing school report which took the wrong exit off the information superhighway never to be seen again, a navigational error for which I take full responsibility.

So we'll start with a message from the school's acting head, Denise Plant, with some news now familiar to the school community but which may still be unfamiliar to those outside it.

We were sorry this term to be welcoming pupils back to school with some sad news. Mrs Thong was unable to return to school with the rest of us due to illness. She was diagnosed with cancer during the latter part of the summer holiday and with further diagnosis, treatment and recovery it seems likely that we will not be seeing her in school until the spring term at the earliest. I'm sure you will all join with us in our heartfelt hopes for her speedy recovery. During Mrs Thong's absence Mrs Plant, as Deputy Head, will be leading the school.

We realise that many of you will want to send your best wishes to Mrs Thong and would like to invite you to bring any cards and messages into school. Please give them to Mrs Davis in the office and we will ensure that they are passed on.

FUNDAY SUNDAY

Thanks to everyone for their help and enthusiasm in staging this year's Fun Run and Fun Day. The sun shone, entries were up on last year and we raised more than £1,000 towards new gym equipment for the school and science equipment for the pre-school. Special thanks here to Modbury's answer to John McCririck, Phil Ainsley, who did such a good job of bringing the runners under starter's orders and for his surreal and entertaining commentary. Thanks also to local band SwampAsh who provided a great soundtrack for a sunny Sunday afternoon and to Chris and Lynne Barnes for their tent-wrangling skills.

PTA NEWS

It's all change at the PTA following last month's AGM. Enormous thanks go to the outgoing committee, Kim Wilson, Nichola Twohig, Beverley Andrews and Emma Harvey-Doddridge who have worked so hard for so many years, raising huge sums for the school and keeping the numerous social events ticking over. The new chair is Tracey Fox, vice-chair Claire Hagger, treasurer Eileen Berry and secretary Clare Fardon. Emma Harvey-Doddridge will be on hand to offer advice if needed. The next meeting is on Tuesday, November 4th at 6.30pm in the school staffroom and everyone is welcome.

Other dates for the diary are the Ikea shopping trip, Sunday November 9th, leaving the school field at 8.30am, price £15, contact Emma on 830162 for details. Scrub up for the Hampers & Champers evening on Saturday, November 15th, at the Memorial Hall from 7pm. Tickets are £6 each, contact Fran Lock on 830793 or Fiona Kitt on 831169 for details.

The Christmas Bazaar is being held on Saturday, December 6th at the Memorial Hall, from 11am.

All help welcome. *Ellen*

CHRISTMAS CELEBRATION



Modbury's most senior citizens are warmly invited to join the school's PTA, children, and staff for a Christmas celebration on Monday, December 15th.

This is an opportunity for those other than the grandparents and parents of current pupils to be a part of the seasonal festivities at the school.

As well as entertainment from the children, there will be a raffle, tea and mince pies and other refreshments. If you would like to join us, please contact the school on 830312 by December 11th.

MODBURY COMMUNITY CHRISTMAS CARD

This is a fabulous way of sending Christmas wishes to all your local friends and colleagues without having to write any Christmas cards! The Community Christmas Card is displayed in one of our local shops in the weeks running up to Christmas and is a beautifully produced card by local artists – the local artists of course being children from Modbury Primary school! It will also be displayed in the December issue of the Modbury Messenger.

All you have to do is donate £5 and have your family's names added to our ever growing list of contributors. In the past few years all your support for this scheme has enabled the school to purchase much needed equipment for the children that will be enjoyed for years to come. This year we would like to raise funds towards a new, much needed pool cover.

We not only save money by doing this fabulous card (let's face it, Christmas cards are getting pricey), we also help preserve our environment and cut down on recycling waste, save ourselves some precious time and can feel confident in the knowledge that our £5 contribution is investing in our children's future. You do not have to be a parent of Modbury School to join this scheme, anyone can be involved.

Simply put your donation in a sealed envelope and either deliver it to the School Office or take it to Pickles. Please remember to put on the envelope ALL the names that you wish to appear on the Community Christmas Card. This may or may not include your surname, it is entirely up to you. I will enter it on the card exactly as written on the envelope.



The cut off date for contributions is the 11th November!

SO DON'T FILE THIS IN THE 'TO GET AROUND TO ANOTHER DAY' PILE, DO IT NOW AND THE JOB'S DONE!

If you have any queries you can contact us:-

Rachel Hardy - 810 440 Email: rachelhardy@ntlworld.com

Diane Cray - 830 746 Email: bradleycray@btinternet.com

Many thanks in anticipation of your support



The Royal British Legion Modbury Branch

At the AGM on 6th October all officers agreed to carry on for another 12 months. Membership Cards are now being distributed to members who do not pay by Direct Debit. Annual subscription remains at £11.00.

If you are interested in joining the Royal British Legion please ring the Chairman Bill Sloman on 830425. You do not have to be ex-service to be a member.

Bistro Coffee Morning

We are grateful to all our supporters who came to the Coffee Morning and Cake Stall on October 8th. Total raised was the sum of £220.75. Special thanks to Annabel and Barry for their co-operation; also of course thanks to all the magnificent cake makers.

By the time you read this report we shall have launched the Annual Poppy Appeal. Please note the following dates:

November 1st – Coffee Morning in the Modbury Club: 10.00 am – 12 noon.

November 8th – Coffee Morning in the Exeter Inn: 10.00 am – 12 noon including Raffle.

November 9th – **Remembrance Sunday** Parade at 10.00 am on the Green and march to St George's for 10.30 am Service.

November 11th

**Assemble at War Memorial –
11.00 am (Armistice Day).**

On **Remembrance Day** crosses will be placed in the designated area near the main Church Gate, one for each of the names inscribed on the War Memorial. Their names are written on the crosses. Anyone who wishes to place a cross in memory of a loved one will be welcome to do so – crosses will be available from the Poppy Distributors when house-to-house collections take place. **If you can help us with the collecting please ring Beryl or Don Masters on 830545.** Many thanks.

David Mitchell



MODBURY LOCAL HISTORY SOCIETY

Our meeting on 8th October was very well attended and we invited members of the Modbury Society to join us. The Speaker on that occasion was Bernard Hughes from Exmouth who gave us a most interesting talk about the inland waterways of England.

At the beginning of his talk Bernard explained that he does not consider himself an expert on this subject, but when he had finished speaking we were all convinced that he was wrong in this respect – he gave us so many facts and figures that it soon became obvious that he has studied all aspects of our canal systems over many years. He does in fact, with his wife and family, own a 60ft longboat, and they have travelled many of the 3000 miles which are still navigable.

Until the advent of road transport as we know it today a great deal of freight was moved on the canals, which are now mainly used for recreation. Bernard showed us many colour slides which he has taken of various locks, and explained how the locks are operated. He also brought some examples of 'bargeware' – a beautifully painted water container and stool, and he wore a typical jacket, belt and bowler hat which he wears on the boat. He managed to stop talking after one and a half hours, although he said he could have carried on for longer....! Perhaps we shall be able to persuade him to return at a later date.

The Chairman of the Modbury Society, Roger Gage, warmly thanked Bernard for giving us such an interesting evening and confirmed that we all consider him to be a real expert even if he does not agree! Roger also thanked Ruth Davidson-Ward for allowing

us to use the White Hart Assembly Room. The speaker remarked on how lucky we are to have such a good venue.

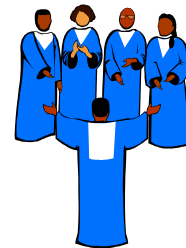
Next month a complete change of topic. On November 12th Susan Laithwaite from the Devon Records Office is coming to explain how Tythe Maps originated, and their purpose, etc. The Modbury Tythe Map was restored a couple of years ago having been lost for a number of years. It re-appeared in the Parish Office – it still remains a mystery where it had been...

Talks commence at 7.30 pm and take place in the White Hart by kind permission of the management.

David Mitchell

LUPRIDGE SINGERS CHRISTMAS CONCERT

**St George's Church
Saturday 6th December**



If perchance you come across any of your singer friends from Modbury, Aveton Gifford, Newton Ferrers or Kingsbridge, be they Soprano, Alto, Tenor or Bass, in deep concentration on the vocal scores of Handel's Messiah, Vaughan Williams' Fantasia on Christmas Carols or Francis Poulenc's 4 Motets for Christmas, rest assured it is all in the cause of the Lupridge Singers Christmas Concert in St George's Church, Modbury on Saturday 6th December.

Regular Tuesday evening rehearsals are in hand under Trefor Farrow's excellent direction in preparation for this concert. Make a note of the date in your diary.

Roger Gage

MODBURY P3

Once again Modbury folk excelled themselves during the work party held on 12th October. Some 15 tons of road planings were applied and compacted onto the paths circumventing Swanbridge Mill Farm and everything was completed in under two hours. Amazing!



Thank you to all those who took part, Tom Hendy for the use of his machinery and Kitty Hendy for hosting the much needed and well deserved refreshments. A pat on the back to all.

Mike Oakins & Brian Weeks: P3 Co-ordinators 830550/830007

MODBURY MILLENNIUM MEADOW – PAST, PRESENT & FUTURE - *What have they done to our Meadow? Who's doing what? Where is it? Why were the BBC involved? Will there be another Teddy Bears' Picnic? Why are the Police involved? What next?*



The first Annual General Meeting to discuss the development of the Millennium Meadow will be held in the White Hart function room on:

Monday 24th November at 7.30pm

All are welcome, especially those who have an interest in, or use, the Millennium Meadow. The meeting will show what has been achieved so far, discuss some of the current issues and review our plans for the future. However, the Meadow is very much your facility, so we want your views and opinions on its development and well being. Offers of support would also be most welcome. We look forward to meeting with you.

THE GREEN CORNER Green Driving



It's a funny old world isn't it? In the eyes of some newspaper and TV journalists, the economic crisis over the past few weeks heralded the end of the world as we know it and a spiralling down into a 1930s type depression.

Yet as a result of a drop in demand, the price of oil has fallen, the price of petrol may once again be less than £1 a litre, and there is even talk of electricity and gas becoming cheaper next year. The fall in demand for raw materials and consumer goods means that our supplies of oil may not run out quite as soon as predicted, but run out they surely will!

Although there are still vast reserves of oil, much of it is now difficult, expensive or environmentally disastrous to extract. "Peak Oil" is the point when consumption of oil outstrips new discoveries of it, and many people now believe it is already here. It is both a challenge and an exciting opportunity to adapt the way we, our children and grandchildren are going to live.

So what can we in Modbury do about it? Well, as a rural community we are well placed to minimise the impact of both energy shortage and climate change. We could consider becoming a "Transition Town" like our neighbours in Totnes, Ivybridge and many other communities. The "Transition" is to plan ahead and become more resilient to a future without oil and be more self-reliant in areas such as food, energy, health care, jobs and economics. It's far too big a subject for a small corner of the Messenger! So next time you're on-line have a look at: <http://totnes.transitionnetwork.org> or www.transitionculture.org

And to finish on a lighter note – it was great to read of the couple who collected recyclable rubbish, took it to a Tesco site (not round here, sadly) where you receive clubcard points for every item, converted them into air miles and flew back, business class, from their American honeymoon, on the proceeds. A green wedding?

Jeff Booth jeff@highfield.tv



**IVYBRIDGE
AND
DISTRICT
RNLI**

**RNLI TRAD JAZZ
EVENING**

Yes, it was just like the good old days, with everyone dancing the evening away to the 'Good Time Jazz' group from Newton Ferrers!

112 supporters occupied 14 tables in the Memorial Hall, bringing in most cases their lavish picnic suppers with wine and bubbly and even on one table – candelabra.

First though, we were treated to a half hour performance by the excellent polished playing and singing of the Newton and Noss Ukulele band. Watching a line of

young girls and boys strumming in time and singing with smiles on their faces was a sheer delight.

I would like to thank not only all those kind Modbury Traders but also the individuals who so generously provided the raffle prizes. The whole evening resulted in a profit of £1,150 for the RNLI.

John Robinson, Hon. Sec

MODBURY'S TENNIS PAVILION

NEARS COMPLETION WITH £500 GRANT

South Hams Radio Trust has awarded Modbury Tennis Club £500 to help complete its new tennis pavilion. Modbury Tennis Club secretary Jane Bullen said:

"We're thrilled with this generous grant from South Hams Radio Trust. So many residents and friends have given their kind help and support over the past two years to renew our two tennis courts and to build a pavilion, and now we'll finally be able to complete the project."

As he handed over the giant £500 cheque South Hams Radio Trust Treasurer Graham Gilbert said he was very impressed by Modbury's resurfaced courts and added that "Modbury can be very proud of this great facility for everyone to enjoy".

Modbury Tennis Club welcomes new members. Anyone who wishes to use the courts or join the club can email modburytennisclub@btinternet.com or phone Gerry on 01548 831028.

For additional information please contact Anne Edmonds, MTC press officer, on 01548 830247.



Graham Gilbert (left), Jane Bullen (right) and members of Modbury Tennis Club on the steps of their new pavilion

MODBURY MEMORIAL HALL

The Trustees are pleased to announce that there will be no increase in booking charges for the Memorial Hall for the next year

There have been NO increases in booking charges since 2006

Christmas Fair

**Arts and Crafts
Market Hall, Fore Street, Kingsbridge**

24th – 28th November 2008 10am – 5 pm

There will be sixteen tables selling paintings, personalized and farming melamine products, woodcraft, candles, cards, pottery, ceramics, jewellery, sculptures, willow baskets, soaps and original prints.



The Fair supports this important Charity MSF who provide doctors, nurses, and supply services to trouble spots throughout the world

Volunteers from churches and villages of stallholders and others sell teas, coffees, cakes and cookies from the MSF tables at the back of the hall. All proceeds from these sales go to charity.

**Would anyone interested in making cakes or spending a few hours helping on the MSF tables please contact Andrew Thomas
01548 830664**

*HARVEST FESTIVAL AT
ST GEORGE'S*



Very many thanks, first to all those, including the congregation of the Methodist Church, who generously gave fresh produce, tins, jams, eggs and other household items in support of the three charities. The Salvation Army, the Shekinah Mission and Plymouth Women's Refuge were most grateful to receive these gifts.

Secondly, thanks to all those who gave not only their time but also greenery and flowers (especially Mervyn Bennallack for the wonderful Michaelmas daisies) to decorate the church so beautifully for Harvest Festival.

Finally, thanks to Alan Jenkins and Pauline Ryder for organising the production of the harvest loaves, to Barry and Annabel of Bistro 35 for the use of their oven to bake these and to Fox's Bakery for the loan of the trays.

Bridget Robinson



·ACTING TO PROTECT AND SAVE·

Recruits needed

Fire appliance **unable to respond** to emergencies due to shortage of crew

Modbury Fire Station still urgently needs to recruit retained firefighters to maintain emergency cover – specifically during the daytime.

There are now significant gaps in the cover that the station can provide during the working week - **the critical period is typically between 8am and 5pm.**

WHAT DOES THIS MEAN? – it means that between these times there are insufficient crew members available and the Fire Appliance **cannot** respond to emergencies.

In the last few months there have been several emergencies that the local station would normally have responded to which had to be dealt with by other stations. This creates significant time delays in response and it is only a matter of time before a serious or tragic event occurs that could have been avoided had Modbury Fire Station been able to respond.

WHAT CAN YOU DO? – Join is the answer, anyone who is reasonably fit and in good health, regardless of gender, could be a potential recruit and make a difference to the community.

Contracts are tailored to the individual and linked to a salary scheme. Training is modular, very thorough and is conducted at one of the Service Training Centres.

WHO SHOULD I CONTACT? –Nigel Toms on 01548 830473 or email Nigel.toms@lineone.net If you live and/or work in Modbury and feel you can help – make contact now.



NO CREW – NO RESPONSE

MODBURY FAIR 2009



There is a meeting on **Tuesday 18th November 2008** to be held in **The Modbury Inn at 7.30 pm** to discuss the programme of events for Modbury Fair.

If you have any ideas, would like to come and help us, do please come along.
We welcome your ideas.

If you would like more information ring Pauline Ryder - 01548 830133

MACMILLEN BIG COFFEE MORNING

27TH September

Many thanks to all who joined us to make a good result - £774.50 for the above event.

This year we were joined by 'Top of the Steps' with Mandy's good idea of 'Buy a Slice' cake (donated by Simon Wilkinson) raising £48.

Thank you to the Lunch Club who made us their charity of the month. To Colin at 'The Modbury Inn' and Simon from 'Wilkinson's Butchers' for their generous raffle prizes.

To Annabel and Barry for the use of Bistro 35 and also for providing coffee (this means that everything we raise goes to the Macmillen Support).

To all the kind people who sent donations with friends (unable to come themselves, but still wanting to support). Also those who donated raffle prizes, cakes, made biscuits and other goodies.

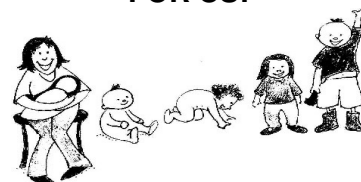
Last but not least the team on the day who manned the door, the raffles, the cake stall and the coffee pot, and to Mary-Rose for drawing the raffle. Thank you all so very much.

Ros Fortescue

MODBURY TIDDLERS

A Community Run Group for Small People aged 0 - 5 (and for the people who wipe their noses!)

PLAYTIME FOR THEM! COFFEE AND A CHAT FOR US!



Fridays 9.30 - 12 noon
£1.50 per child

@Modbury Memorial Hall

Enquiries ring Angie:
01548 831139

IT'S A GIRL THING!

A big thank you to all of you who gave time, cakes, prizes and donations for our Coffee Morning on Friday, 17th October.

We raised a fantastic amount of money for Cancer Research UK's "It's a Girl Thing" campaign. At the last count we'd received well over £550!

Thank you everyone for helping to support such a special cause.

Love Hilary Garry xx



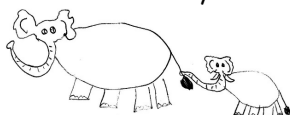
An hour of songs, stories and play for under 5s - bring a grownup

Thursday, December 4th at 9.45 am in St George's Church, Modbury

Coffee and chat from 9.15am

This month's theme:
The Christmas Story

Car Park in Church Lane next to Runaway Lane



The Modbury Inn

Brownston Street, Modbury, PL21 0RQ. Tel: 01548 830275
e-mail: colin@modburyinn.fsnet.co.uk www.modburyinn.co.uk

Christmas Menu 2008

(available from 2nd to 24th December)

Homemade Soup of the Day

Smoked salmon and prawn parcels

Sautéed mushrooms in a white wine and garlic sauce and warm toast

Sticky barbeque spare ribs

Roast Turkey with all the trimmings and homemade Cranberry Sauce
Roast Sirloin of Beef, Yorkshire Pudding and homemade Horseradish sauce

Smoked haddock with a creamy cheese sauce on buttered spinach

Pan fried Duck breast with a black cherry sauce

Vegetarian dish of the day

Christmas Pudding and Brandy Sauce

Strawberry Pavlova with a fruit coulis

Ice cream profiteroles with hot chocolate sauce

Treacle tart with custard or ice cream

Coffee and Mints

All main courses served with fresh vegetables of the day

Price £16.95 per head

A £5.00 per head deposit is required with the booking please

*****AVAILALE FOR ADVANCE BOOKINGS ONLY*****

TREASURER REQUIRED

For
**MODBURY ASSOCIATION
OF RECREATION AND
SPORTS (MARS)**

This is an exciting time for MARS as we look to update and replace our facilities at the Recreation Field. The role of Treasurer is vital to this process, being responsible for the financial management of the Association as well as acting as a committee member.

If you have an hour or so a week to spare and would like to be involved, please contact the Secretary (Eileen Berry) for further information on 01548 831307.

**We look forward to
hearing from you!**

New – WOMEN ONLY **RUNNING CLUB** **For Modbury &** **Surrounding Area**

**MAKE FRIENDS, HAVE FUN,
GET FIT!**



If you want to get a little fitter, enjoy the fresh Devon air and meet new people, then come and join me on Sunday mornings. Although we started on 5 October you are welcome to join at any time – the more women the merrier!

The Meeting Point is: Aveton Gifford
Car Park on the roundabout
Novices/Runners – 0900 start and
Complete Beginners – 1015

**To register an interest or for further
information, please ring Carol on
07968 258059**

Or email: cfstrong@btinternet.com

You are invited to ...



Dame Hannah Rogers Trust

Christmas Fayre

Thursday 20th November 2008
10am – 4pm

Kitley House Hotel, Yealmpton

Join us for a fabulous day of festive cheer in the sumptuous surroundings of Kitley.

Enjoy fine food and a fantastic atmosphere as you cast your eyes around two marquees full of fine arts and crafts, perfect presents and sensational gifts.

Advanced Tickets **£12 – Entry, Lunch & a Glass of Wine**
 £8 – Entry & Devonshire Cream Tea
Tickets on the day **£6 – Entry Only**

For tickets and information contact Rachael on (01752) 898117
or email rachael@dhrt.co.uk



Registered Charity Number 306948



Potential to Achievement

*MOONSHINE HOE DOWN

With Special Guests 'OUT TO GRASS'

Bluegrass Folk Band

at

Modbury Memorial Hall

Saturday 1st November

7.30 pm – Midnight

Tickets £10 each includes entry and Real Man's Food!

Moonshine Saloon



**Git Yer Boots and
Hat on...
YEE HAAA!**

*Raising funds for Modbury
Pre-School

Registered Charity No: 1039616



totalelectricsltd
QUALITY ELECTRICAL SERVICES

- Outside & Security Lighting
- Extra Sockets
- Replacement Fittings & Fixtures
- Rewires
- Home Extension Wiring
- Conservatory Wiring
- Alarms
- PAT Testing

Tel: 01548 810 006
Mob: 07876 593 705



FULL DAYCARE
5 DAYS A WEEK
Outstanding OFSTED Report
Among top 3% of country!

Your 2½ - 5 year old can now attend preschool all day

Toddler Group Thursday
1.15 - 3.45 pm, all welcome, with parent/adult

2 year olds are welcome
Tuesday to Friday afternoons
Please phone or drop by to enquire about sessions to suit your needs

Modbury Preschool
Back St, Modbury
01548 831477
Registered Charity
No.1039616

ROCKSHOP

Fridays 7.00 - 9.00 pm
Modbury School Hall
10p Entrance
Younger Group Ages 8 - 11
Older Group Year 7 Upwards

Hockey, Basketball
Giant Skipping, Football
Craft, Drama, Tuckshop
and also for the older group:
Community Activities,
Occasional Discos
and Live Bands
A Christian Youth Group
Established in Modbury
For over 30 years

EVERYONE WELCOME

Contact David - 831589
or Simon - 830857

Mrs C V Harrington MCSP; MMACP

Chartered Physiotherapist

Registered with the Health Professional Council
And all Health Insurance Companies

DOMICILIARY SERVICE / HOME VISITS



Tel: 01548 810023
Mobile: 07776393927

Member of the Organisation of
Chartered Physiotherapists in Private Practice



EDEN TREE AND HEDGE CARE

- All tree surgery undertaken (NPTC Qualified)
- Felling/reduction/pruning
- 24 hr call out on trees
- Lawn mowing
- Hedge cutting
- Garden clearances
- Chipping and chainsaw work
- Fully insured to £5 million
- Strimming
- Turfing
- Pressure washing

Logs and wood chip for sale all year round
For a free friendly quote call Adam Sloman on
01548 830611 or (07760 324419)

CLEANER/FRESHER & NEWER LOOKING CARPETS & UPHOLSTERY AT AMAZING LOW PRICES



- ALL Stains Dirt & Odours Removed
- Affordable & Professional
- Local & Friendly Service
- LOW COMPETITIVE PRICES
- Residential, Business or Contract
- Fast Drying Times!
- In just 1-8 Hours



Call us now for a FREE no obligation quote

CLEARVIEW-PLUS

Tel: 01548 550906

Mob: 07971 877772

www.clearview-plus.co.uk

1st Class Carpet & Upholstery Cleaning
from your local NCCA Approved Member
email: info@clearview-plus.co.uk



AQUA HAIR DESIGN

PRESENTS

Modern Organic Products

MOP provides salon performance products with quality organic ingredients.
This Autumn treat yourself as well as the environment!

Open 'til 8.00 pm Fridays
No 7 Modbury Court
01548 831260

MODBURY BAG



If anybody happens to see a Modbury Bag carried by a Spanish person in Southern Spain, it is most likely the bag that was stolen from a supermarket in Nerja Andalucía.

It seems unlikely that the Spanish Towns will adopt the plastic bag policy that has made Modbury famous.

Roy and Carol Sims

Modbury Information Centre

01548 831187

Winter Opening Times - Saturday 10am - 12 noon

Summer is over, thank you to all our wonderful volunteers who have manned the TIC and welcomed thousands of visitors to Modbury and all you Messenger readers who have popped in to see us, I hope we have made a difference to your summer.

Although we are now closed during the week we are still open on Saturday mornings between 10am and 12 noon for all your accommodation bookings, bus passes, details on local attractions, cinema and theatre listings and a whole host of exciting things to do over the winter months, as well as discount vouchers for several attractions.

There are still lots of special events taking place all round the region, lots of fun things to see and do, Coast & Countryside events as well as exciting "goings on" at Woodlands and other venues.

There's no getting away from it Christmas is just around the corner, so why don't you start that Christmas shopping in our unique and wonderful shops. Stop and enjoy the relaxed atmosphere that Modbury has to offer and enjoy the festive cheer in our Pubs, Restaurants and Coffee Shops.

Take care, see you soon. Sue Birch

Drop your trousers at Pickles!

Quality Professional Dry Cleaning



care for what you wear

Available at Pickles of Modbury
Collection every Wednesday & Saturday

South West Devon Liberal Democrats

GRAHAM WATSON MEP

Graham is one of the region's 7 MEPs and Leader of the Alliance of Liberals and Democrats in the European Parliament

7.30 pm Saturday 15th November

Yealmpton Community Centre

Tickets £7.50 to include
a curry supper

Mark Lawrence 830423 or
Mary-Rose Rogers 830310



MARTIN LEY PLUMBING & HEATING

- Oil Installations, Servicing & Repairs
- Unvented Cylinders
- Bathrooms & Showers
- General Plumbing

Tel: Mobyury 01548 830609
Mobile: 07811 934551

ANTIQUe FURNITURE REPAIRS & RESTORATION

Veneer Repairs, French Polishing
Hand stripping & Re-finishing
Wood-turning

CANEWORk & RUSH SEATING
Danish Cord & Seagrass



Guye Roberts
MASTHEAD
Parsonage Road
Newton Ferrers
Plymouth
DEVON PL8 1AS

01752 872805

Website : www.guye.co.uk
Email : guye@guye.co.uk

A.R.B. GARDEN SERVICES

EXPERIENCED
TRADITIONAL GARDENER

MAINTENANCE &
SENSITIVE RESTORATION

CV AND
REFERENCES AVAILABLE

Alan Boyce
16 Cromwell Park Modbury
Ivybridge Devon PL21 0RS

01548 830747
07989 415385



Kingsbridge Eye Care
1 The Promenade
The Quay,
Kingsbridge
Tel 01548 856 854

'Look no further...'

NHS/Private Eye Examinations
Everything from designer sunglasses
to low cost lens and frame packages
Contact Lens Specialists

Testing daily

**A personal and professional
service by Optometrists:**

Nigel Frost BSc (Hons) F.C. Optom,
Angela Hickman BSc (Hons) F.C. Optom
Kathryn Poole BSc (Hons) M. C. Optom

Nigel Frost
Optometrist
3 Chene Court
Modbury
Tel 01548 830 944



TALL ORDERS

**Landscaping & grounds
maintenance**

~lawn mowing ~hedge trimming
~brushcutting ~clearance....

HARD LANDSCAPING

~fencing ~decking ~patios
~natural stone walling

CHAINSAW & TREE WORK

UNDERTAKEN

Chipper & Mini-digger available
logs supplied

For a friendly free quote call James
Tall on 01548 831139 or mobile
07967258318 (fully insured)

GOLDWELL ■
Hair Cosmetics

LAMAU
Hair Care Products

ghd
a new religion for hair

dermalogica

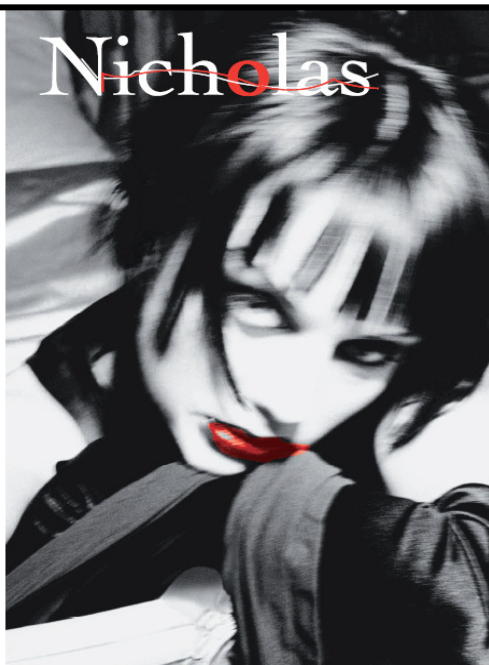
Beauty Therapy

- Skincare Treatments
- Holistic Massage
- Reflexology
- Body Firming and Reducing Treatments
- St. Tropez Spray Tanning
- Acrylic Nails
- Waxing
- Manicure and Pedicure
- Eyelash and Eyebrow Treatments

Early morning or late night appointments available.

London House,
Church Street, Modbury, S. Devon
Tel: (01548) 830152

Nicholas



MODBURY BADMINTON CLUB

**Memorial Hall
Tuesdays**

7.30 – 10 pm

New members always
welcome

For further information please
contact:

Gill Jolly

Tel: 01548 831263

KITCHENS BY
DeZine

Form and Function
Working in Harmony

Our services provide you with a one point of contact for all your needs and we offer both a trustworthy and reliable service but also one that remains personalised to you.

Our team of highly trained kitchen designers can cater for your every need
- no matter how small or large it may be.

t. 01548 830 819 f. 01548 831 519
27 Church Street □ Modbury □ Devon □ PL21 0QR

info@kitchensbydezine.co.uk
www.kitchensbydezine.co.uk

Advertising Tariff for The Messenger

In order to support the publication of The Messenger, advertising relating to business or of a commercial nature will be charged at the rates shown below.

Information for community use will continue to be published free of charge.

Single Insertion

1/9 th page	£10.50 per insertion
2/9 th page	£21.00 per insertion
1/3 rd page	£31.50 per insertion
1/2 page	£42.00 per insertion

Three Insertions

1/9 th page	£8.40 per insertion
2/9 th page	£16.80 per insertion
1/3 rd page	£25.20 per insertion
1/2 page	£33.60 per insertion

Six Insertions

1/9 th page	£6.30 per insertion
2/9 th page	£12.60 per insertion
1/3 rd page	£18.90 per insertion
1/2 page	£25.70 per insertion

Eleven Insertions

1/9 th page	£4.20 per insertion
2/9 th page	£8.40 per insertion
1/3 rd page	£12.60 per insertion
1/2 page	£16.80 per insertion

Artwork of good black and white copy to be supplied.
Payment must be made in advance.

Cheques should be made payable to 'Modbury Parish Council' and sent to The Parish Office, 6 Modbury Court, Church Street Modbury PL21 0QR.

**For further information
please contact**

**David Hansford on
01548 830222**

MODBURY PARISH COUNCIL PARISH OFFICE

6 Modbury Court, Church Street
Modbury

Tel: 01548 830222

e-mail modburypc@tiscali.co.uk

Hours of Business-
Mondays 9.00am-1.00pm

Parish Surgery
10 – 11 am every Saturday

Planning Applications

Notices of planning applications lodged with SHDC are displayed on the Parish Noticeboard outside the Post Office. Copies of plans relating to these applications can be inspected at the Parish Office during above office hours or when a Councillor is on duty.

Contacting Parish Councillors

Parish Councillors attend the Parish Office, on a rota basis, on Saturday mornings from 10.00 - 11.00am. Should you have any parish matter you would like to discuss come along to the Office at 6 Modbury Court. You can also call in to the Office on Mondays from 9.00am - 1.00pm and speak to the Clerk, David Hansford.

He can also be contacted by phone on 01548 830222 or e-mail at modburypc@tiscali.co.uk

At all other times you can leave a message either by phone or e-mail (see above) or alternatively you can write a letter or speak at the public forum held at the beginning of each monthly meeting of the Parish Council, held on the second Monday of each month at 7.00pm in the annexe of the Memorial Hall.

MESSENGER CLOSING DATE

*The closing date for the
December Messenger is
16th November 2008*

Please send all copy, by e-mail to prestons@onetel.com or deliver to the **Parish Office** (please note that all advertisements should be submitted **ONLY** via the Parish office – see below).

Payment for all advertisements must be made in advance. Cheques should be made payable to 'Modbury Parish Council' and sent to The Parish Office, 6 Modbury Court, Church Street, Modbury PL21 0QR. For further information please contact David Hansford on 01548 830222.

The Modbury Messenger is published by The Modbury Parish Council and is printed by SHDC, Follaton House, Totnes.

The views expressed in the Modbury Messenger do not necessarily represent those of The Modbury Parish Council.

SOUTH HAMS DISTRICT COUNCILLORS

Our South Hams District
Councillors are:

**Geoffrey Fielden –
830916, or
[councillorfielden@
southhams.gov.uk](mailto:councillorfielden@southhams.gov.uk)**

**Mark Lawrence –
830423, or
mark.lawrence@totalise.co.uk**

Our representative on
DEVON COUNTY COUNCIL
is William Mumford and he
can be contacted on:
**01752 873002 or
william.mumford@devon.gov.uk**

CREDIT CRUNCH: MONEY SAVING TIPS TO BEAT THE SQUEEZE

Don't let the credit crunch cramp your lifestyle. You can still throw that dinner party, turn heads with your wardrobe and keep the heating on without compromising on quality. You just need to nip and tuck your spending habits.....

Colour of money: Rather than buy new clothes, why not dye your old favorites to give them a new lease of life. Dylon's handwash dyes cost from £3.40 and machine wash dyes cost from £6.60 in Pickles. We stock a full range of colours and they are easy to use - just don't put too many items in the bucket unless you like the tie-dye look.

Electric Avenue: Slow cookers and high speed pressure cookers are back with a vengeance and a perfect solution for today's time pressed families. With food price inflation and rising oil prices preparing your own meals rather than relying on convenience foods can be an extremely healthy and cost effective option. Cheaper cuts of meat are perfect for slow cooking and it's also healthier as vitamins and minerals are retained in the sauce.

Store it up: Bring out the Tupperware. Try and cook a bit more than you need of things like lasagne, stew and shepherds pie, then freeze small portions: cheaper (and healthier) than the frozen ready meals.

See the light: Invest in energy-efficient light bulbs. They last about 10 times longer than ordinary ones and cost from as little as £3.99. For each bulb you fit, you can save up to £7 on your annual electricity bill.

Be romantic: Turn-off or dim your lights a few times a week and enjoy candlelight at a fraction of the cost! Freeze left over wine. Put the remaining half-glass in an ice tray – the cubes can be added easily to sauces, and will save opening a bottle for cooking.

Green fingers: Try growing your own vegetables and fruit. Even if you don't have a large garden you can use pots or tubs, or even window boxes and the whole family can join in. It's not the best time of the year to start doing this, but there is still time to plant winter and spring crops like cabbages, broad beans, garlic, lettuce, rocket, spinach and potatoes. When you grow your own, you can afford to stay organic. For the price of some compost and a few seeds, you can have fresh, local, seasonal produce all year round. And you don't even have to pay for the compost if you make your own.

Keep it local: Remember all the little shops you used to go to before the large supermarket came to your area? You will save on wear and tear, fuel and parking by shopping locally. The average return journey from Modbury to Plymouth will set you back £5 in fuel alone. Add to that the cost of parking at £1 per hour and you could be making significant savings on your weekly shop.

Pop in and see us in Pickles where we have plenty more money saving ideas for you - and if you haven't visited us lately you might even be pleasantly surprised.

We stock an excellent choice of cookware, hardware, DIY goods, pet food, toys and much, much more.

MAKE THAT ONE STOP SHOP AT PICKLES, 2 BROAD STREET, MODBURY - 01548 830412


Wild Goose
34 Church Street,
Modbury, PL21 0QR
01548 830715
Stockists of Rowan &
Colinette wool/patterns
English Blue & White China
Various Range of jewellery
Fashion Accessories
Pine Furniture


Accountancy
Services

- Accounts
- Tax Returns
- Start-ups and Business Plans
- Bookkeeping, Payroll & VAT
- Fixed fees in advance
- Self-Assessment and CIS

Contact Alex Smith (ACA) on
01752 551 888
To arrange a free initial, no
obligation meeting


TaxAssist Accountants
The Accountancy and Tax Service for Small Business

WALTERS
CHRISTMAS
TURKEYS 

Our free-range turkeys are traditionally reared and prepared in the time-honoured way to give a moist, flavoursome meat for the centrepiece of your Christmas table.

They meet the Golden Promise standard with welfare a top priority.

For further information or to place your order please ring the Walters family on (01548) 810259.

Please note that potatoes are now available from Whympton Farm.