

MODBURY MESSENGER



BAGLESS BOGOTA

You would think that after the world-wide press coverage our town has received over the past six months that we would begin to be somewhat blasé about receiving high profile visitors in Modbury. However an unexpected event this week would prove us wrong!

After reading a full page article about the achievements of Modbury, in the Pretoria Times, the Colombian Ambassador to South Africa, Mr Carlos Moreno de Caro, was so impressed he immediately altered his planned UK trip itinerary, which was initially scheduled for meetings with diplomatic dignitaries and politicians in London, to include a visit to our town!

On Wednesday 17 October, Mr Moreno de Caro was met by

Simon Wilkinson and was given an official tour of the town. They visited the majority of the town's shops during which time Mr Moreno de Caro would duly unfold the plastic shopping bag he had brought with him and would ask politely "Could you give me one of these?" His requests were met with huge jocularly as he was politely declined in every shop! He was amazed. After reading the initial article he felt certain that it was possible for the majority of the town to go plastic bag free... but everybody?... surely not. But he was soon convinced!

During coffee (Colombian we hope!) at 'Top of the Steps', Simon showed pertinent clips of the film 'Message in the Waves' to the Ambassador – he was inspired! Armed with Modbury potato and corn starch bags he left, impressed by our determination and achievement, and totally enchanted by our beautiful town!

Winging his way back to South Africa, the trip that he is now planning is to meet with his close friend, the President of Colombia. He would like to spread the word, and who knows... perhaps the next place

to go plastic bag free will be Bogota!

Many thanks to Simon for promoting our town so well and to the traders for showing the Ambassador what a wonderful town we have.

Modbury Chamber of Commerce



MODBURY FIREWORKS CLUB Will be holding their **ANNUAL FIREWORKS DISPLAY**

**On 5 November at 7.00 pm
at the
Recreation Field
Chapwell Lane**

There will be an admittance fee on the gate and refreshments are available. Due to last year's excellent attendance we are able to continue again this year, making it:

BIGGER AND BETTER
**Look forward to seeing you
all again**

Pete Watts

AROUND THE CHURCHES



St Monica's Roman Catholic Church

St Austin's Priory
01752 892606
Sundays
9.00 am Mass
Everyone Welcome

Modbury Methodist Church

Superintendent Minister

Rev John Beadle
(Tel 01548 852073)

Ministers

Rev Gordon Davis
(Tel 01803 862350)

Rev Margaret Johnson
(Tel 01548 531455)

Sunday Services

10.30 am in
St Monica's Church

This is a small friendly group
Do come and join us

November Services

4th – Mr B Newey

11th – Remembrance Service
at St George's

18th – Miss A Kenyon

25th – Mrs C Tucker

Dear Friends



Are you in debt? What do you owe? Who do you owe it to?

We live in a world of debt; from individuals; to the banking system to third world nations.

I was brought up to fear debt and avoid it at all costs with the rule "Don't buy it if you can't pay for it!" It's not quite that simple today when credit cards, mortgages and student debt are a normal part of life.

"....so much owed by
so many to so few"



Churchill

Those words were spoken by Winston Churchill on August 20th 1940, in praise of British airmen as the Battle of Britain approached its peak. This month in our services of Remembrance, we recognise our debt to those in the past and the present who have been prepared to pay the ultimate price, laying down their lives. It is still going on today. This year Remembrance Sunday falls on the eleventh day of the eleventh month and at 11am we will be remembering in silence, how much we owe.

This remembering may get you thinking about other people you owe a debt of gratitude or an apology; a word of encouragement or something else. You could take the opportunity to pay up this month!

The traditional Lord's prayer in the Church of Scotland asks of God:

"Forgive us our debts as we forgive our debtors...."

As we pray the prayer, we remember how much we owe God.

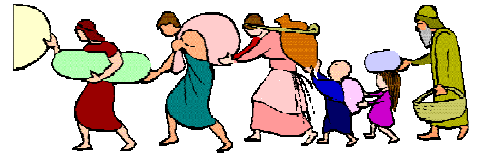


Later on in this magazine you will find another way of remembering. We are inviting people to sponsor a tree beside the new church car park, in memory of someone. 10th November is planting day, and with over a thousand whips to plant, it may take us some time from the 10am start. I've heard a rumour that there may be pasties for those working over lunchtime!

The church is a community; certainly not a one man band. Last month we encouraged people to express their faith in practical service at St. George's by dedicating a harvest of gifts and ministries. Over 30 people (not so few) have offered their time and effort in the service of the church – 45 different opportunities from making coffee to leading worship.

There are sheets still in church if anyone would like to be part of this, and somewhere out there another 80 sheets (so many!) have been taken but not returned. Watch out Aveton Gifford, we may be doing this next year!

Meanwhile I pay my debt of thanks to so many who serve in our churches.



Help carry one another's burdens. (Galatians 6.2)

Neil Barker

LUPRIDGE SINGERS ST GEORGE'S CHURCH MODBURY – 7.30 PM SATURDAY 1ST DECEMBER

A new season and a new conductor

The Lupridge Singers are poised to give one of their most exciting programmes to date on Saturday 1st December in St George's Church at 7.30pm under their new conductor Trefor Farrow. Vastly experienced in directing Opera South West, the City of Plymouth Musical Theatre Company, South West Chamber Choir and the Devon Youth Choir, Trefor has brought together a programme of choral greats that will test the singers and thrill the listeners.

You will hear a John Rutter edition of Gabriel Faure's magnificent Requiem, the rich harmonic modulations of Francis Poulenc's Gloria and Leonard Bernstein's Chichester Psalms, redolent of the musical excitement he brought to the smash hit musical of the 1960's West Side Story.

Come and enjoy it. Tickets £8.00 on the door or £7.00 in advance from Pickles Hardware.

Roger Gage

MODBURY FIRE SERVICE

Recently I attended, as an observer, a practise session at the station at the kind invitation of the Service. The large and extensively equipped Environmental Incident Unit loaned from Ivybridge was on site and it was most interesting to learn of the myriad of kit available to cope with a wide range of emergency scenarios.

Two potential recruits were donned with breathing apparatus plus appropriate clothing and a toxic chemical spillage procedure was enacted. Then followed ladder training, high on the tower, for the would-be fire fighters (definitely not for the faint hearted!) plus high pressure hose control. The dedication, enthusiasm and professionalism of our retained fire fighters was plain to see and Modbury is very fortunate in having such a splendid and essential service on its doorstep. They not only have to fight fires but also cope with the ever-growing health and safety procedures which can, frustratingly, tend to impede actions and instinct - but often for good reasons.

Many thanks to Nigel Toms, Chris Lowry and all their colleagues for sharing their time and knowledge.

It was truly impressive, inspiring and reassuring. I commend Modbury to continue to support them in any way you can.

Brian Weeks, Modbury PC

EMERGENCY PLANNING

On 3 October members of the Parish Council met with representatives of the Emergency Services to discuss emergency planning in the event of a major incident

occurring within the Parish. The emergency services defined their roles and range of expertise and equipment for dealing with all foreseeable emergencies as well as the appropriate lines of communication. The Council members were reassured by the state of readiness of the Emergency Services to deal with a major incident.

POLICE REPORT

PC Steve Mutton attended the Parish Council meeting held on Monday 8 October. He informed the Council that in the period April to September the number of reported crimes in the Parish had shown a significant fall over the same period last year. There were 16 reported crimes compared with 44 in the preceding year. He was optimistic that the increased presence of Community Support Officers in the Parish was having a positive result. The Council passed on their thanks to PC Mutton and the community Support Officers.

Don't forget PCSO Stacy Thorn will be holding her next surgery on Monday 5 November from 5.00 pm – 8.00 pm in the Parish Office, 6 Modbury Court, Church Street. Do visit Stacy and raise any concerns over neighbourhood issues you may have.

PLANNING DECISIONS

Modbury Parish Council recommended and SHDC granted permission for:
Methodist Church, New Road
Amendments to previous application.

Key Cottage, Brownston
Extension to dwelling for disabled use.

Modbury PC recommended refusal and SHDC granted permission for:

Half Acre, Dark Lane

Retrospective application for amendment to extension.

SHDC Granted Permission at: 16 Ayleston Park

For work on limbs to south west side of tree but refused permission to reduce tree crown by 80%.

Modbury PC made the following recommendations:

California Inn - Extension to owner's accommodation - Recommended as submitted.

New Dwelling at rear of Pickles, Broad Street - Recommended as submitted.

38 Galpin Street - Listed Building Consent for erection of hardwood conservatory - Recommended as submitted.

Widland Farmhouse - Listed Building Consent for amendment to approval 35/1166/03/L8 for additional skylights in Linhay Barn roof - Recommended as submitted.

MODBURY MACMILLAN COFFEE MORNING RAISED £621

Thanks to the enthusiastic support of Modbury Town, the local businesses who gave raffle prizes, the ticket sellers, the ladies who made the cakes and other goodies, the ladies who manned the stalls and served the coffee on the day, the gentlemen who put up the notices round the town and the huge generosity of all who came on the day to support such a good cause.

A special thank you to Annabel and Barry for the use of Bistro 35 as the venue and also providing the coffee. This meant that all the money made on the day was forwarded to the Macmillan Nurses Charity without deductions.

Well Done Modbury



MODBURY MILLENNIUM MEADOW

A big thank you to all those who came along to our work party in September. As you liked working so much we are having another one! It will be on:

**Sunday 25th November
from 10.00 am to 1.00 pm**

The focus will be on more ground clearance for final preparations needed for the planting of the Community Orchard in January so if you can bring along some cutting tools, fork/rake that would be most helpful. Unfortunately no pasties this time but if the weather is kind on the day please feel free to bring along a picnic.

We look forward to seeing you and thank you for your kind support.

Modbury Millennium Meadow Committee

Modbury

Tourist Information Centre

5 Modbury Court, Modbury, Devon PL21 0QR

Tel: 01548 830159

Email: modburytic@lineone.net

www.modburytic.org.uk

YOUR INFORMATION CENTRE

Summer is over. Thank you to all our wonderful volunteers who have manned the TIC and welcomed thousands of visitors to Modbury and all you Messenger readers who have popped in to see us. I hope we have made a difference to your summer.

Although we are now closed during the week we are still open on Saturday mornings between 10am and 12 noon for all your accommodation bookings, bus passes, details of local attractions, cinema and theatre listings and a whole host of exciting things to do over the winter months, as well as discount vouchers for several attractions.

We shall also be open to welcome you for a glass of wine and a mince pie during Modbury Lights night on the 30th November, so do pop in and see us. We are also showing an exhibition of the fabulous photographs taken by Alistair Davis, in preparation for our 2008 Tourist Information Brochure, of Modbury and the beautiful area in which we all live.

Not to be missed!

See you all soon.

Sue Birch, Manager

THE GREEN CORNER



Modbury is already plastic bag free – by reducing our carbon emissions from fossil fuels by just a few percent each year, we could make Modbury the greenest place in Britain. Watch this space for future initiatives!

Meanwhile there are lots of simple things we can do to save energy right now, which will reduce our carbon dioxide emissions and help prevent climate change. These range from turning lights off when we leave a room to insulating cavity walls. By bringing energy saving into every aspect of our life - work, travel, and day to day living – we can make a real difference. Not only will you be doing your bit to help prevent climate change you will also see a difference in your pocket.

The average household could save up to £250 a year on energy bills by being more energy efficient. Anyone who has recently had their loft and walls properly insulated will tell you of the benefits of being warmer and the huge savings to be made on their heating costs. About 25% of the heat we put into a house escapes through the roof so a well-insulated loft (8ins minimum), and cavity wall insulation if appropriate, means that our gas and electricity bills can be considerably reduced.

Grants are still available - in some cases a full refund of the cost, so look at www.warmfront.co.uk or call them on 0800 316 2805.

Jeff Booth

MODBURY CHRISTMAS LIGHTS AND LATE NIGHT SHOPPING



The Grand Switching on
Of the Modbury Christmas Lights

Will be on

FRIDAY 30 NOVEMBER AT 6.00 PM

Mince Pies – Nibbles – Wine

Don't Miss Out

Be There!

Shop locally this Christmas

**Anyone wishing to help please contact
Kay Freeman at Wild Goose Antiques
Tel: 01548 830715**

SCHOOL REPORT

As I write this, autumn is setting in and the leaves are turning to shades of red and gold. Fields have been harvested and Modbury School has held its annual **Harvest Festival** event in the school hall, an event acknowledged as one of the best by the parents of our pupils. Through the generosity of these parents, the children gather gifts of produce that are then distributed to retired people throughout the communities of Bigbury, Kingston and Modbury town and as far out as Flete.

FUN RUN

I am not sure how the words fun and run work together but so many appear to enjoy pain and breathlessness! September 26th was no exception as a cross section of parents and pupils experienced the ups and downs of Devon lanes during a 5K race, which was held as part of an annual fun day in aid of the school and pre-school. Hosted in the school grounds, the day was a great success as the community came along to enjoy the attractions and visit the various stalls and sample Kirtley's finest, that being of course his perfectly prepared Ram Roast. A huge thanks goes to Claire Hagger and the members of the PTA, Pre School committee and their helpers for making this a highly successful day. Thanks also to David and Donna George for providing the trophies and to South Moor Vets for their sponsorship. Finally well done to the winner of the race, Steve Archer who finished breathing easy and without pain!

MORE SPORT

During September, eight year 5 & 6 children took part in an area athletics festival. The team came 4th overall, competing in running, long jump and high jump. Jade Lowery was ranked the top girl in the competition (out of more than 80) and 3 further pupils, as a result of their performances were invited to attend an Athletics Academy at Ivybridge Community College. Well done Jade for your fine performance and to Lowena, Molly and Peter for being invited to the Academy.

Our 'Bend it like Beckham' girls once again took to the turf (astro) at a tournament held at Ivybridge School where 6 area schools took part. The

spirit and the behaviour of all those taking part was excellent with many of the team from Modbury School being year 3's performing at this event for the first time! Well done to the ladies in blue who only let one goal in during this event!

A friendly hockey tournament was attended by pupils of the school and the after school Hockey club is yet another area of sport supported by the school. I am sure we could easily exceed Mr Brown's target hours of sport for all schools.

BOOK WORMS

The last week before half term saw Activities Week entitled 'Book Week' where the children took part in a wide range of indoor and outdoor activities designed to inspire and foster a love of books and reading. These included drama and role-play, videoing and recording of performances and talks from visitors to the school about illustrating and publishing.

FIVE THOUSAND LUNCH HOURS AND GALLONS OF GRAVY & CUSTARD!

Mrs Ann Cooke, mealtime assistant at Modbury School has hung up her green pinny for the last time. Ann has worked at the school for 25 years and at her date of leaving was the longest standing member of staff. Her son Reuben attended our school and Ann was a stalwart of the PTA during that time.

Her fund raising is legendary! She has also shared her expertise as a trainer and fundraiser for guide dogs for the blind by coming into assembly to talk about this role. She will be remembered by so many who have attended the school for the hours she has given out of her own time and the staggering 5,000 lunch hours in serving the school with great loyalty.

On Friday 28th September the children and staff celebrated this special occasion of Ann's retirement when she was presented with tubs of flowers and items for the garden. Once again Ann, many thanks and congratulations and enjoy a happy retirement.

If you would like to become a Meal Time Assistant working (enjoying the delights of our hungry children)

between 12 and 1.00pm daily then please contact Bridie Thong at the school (830312). If you are active, enjoy children and have a little time on your hands this could be a good opportunity to become part of our special community.

TALKING OF NEW MEMBERS OF STAFF

Welcome to Jaqui Rosewall who has joined the school as a teaching assistant based in year 5 class. Jaqui brings much experience to her role and the teaching staff is delighted to add her skills to the expertise of their highly valued teaching assistant team.

'READ ALL ABOUT US'

The school has re-launched its web site. Its well worth paying a visit to this bright and cheerful site that contains details about the school and events. It also has a section on Homework Help with useful links that will entertain and educate your children (not to mention myself) for hours and information on how they are being taught. You can access this by logging on to www.modbury-primary.devon.sch.uk The site will expand as time goes by and the school has asked for any comments and ideas from parents and friends of the school that will help to make this a powerful tool for communication and information. Please help by forwarding your thoughts.

LATE NIGHT REBELS!

Just once, every now and again we are at the receiving end of mindless actions. Bottles thrown over the School fence into the yard or onto the school field don't make for a nice environment. This has also been evidenced in the play park, so to the mindless minority DON'T DO IT, and to those who know these people, please ask them to be more responsible and look after our town and people. Mr Kirtley the school caretaker is not paid to pick up broken glass!

NOVEMBER 5TH IS JUST AROUND THE CORNER

Have fun and stay safe with any fireworks and remember that cats and dogs and the elderly can be severely disturbed by indiscriminate use of fireworks.

Chris



The Royal British Legion Modbury Branch

The next General Meeting will take place on Monday 3 December at the Modbury Club. New members welcome. Contact Bill Sloman, Chairman, 830425, if you require details.

Coffee Morning: **Saturday 3 November** at the Modbury Club, 10.00 am to 12 noon, including a Bring and Buy stall. Contributions welcome please. Thanks to Club Management for their co-operation. Another **Coffee Morning** will be held on **Saturday 10th November**, 10.00 am – 12 noon in the **Exeter Inn** by kind permission of the Management. Including a **Raffle and Bring and Buy Stall**, for which we will welcome contributions.

Cake Stall 13 October: Many thanks to all contributors and customers. We raised £140 for the **Poppy Appeal**. We are also grateful to Annabel and Barry of the Bistro for their help.

REMEMBRANCE DAY SUNDAY 11 NOVEMBER

We will assemble at 10.00 am on the Green, together with the other organisations, prior to marching to St George's Church for the 10.30 am Service. Remembrance Crosses will be placed in the designated area near the main Church gate, one for each of the names inscribed on the War Memorial. Their names are written on the crosses. Anyone who wishes to place a cross in memory of a loved one will be welcome to do so. Crosses will be available from the Poppy Sellers when house-to-house collections take place.

This year the Poppy Appeal collections will take place between 27th October and 11th November. We are urgently in need of helpers. If you can spare some time please contact Beryl or Don Masters on 830545.

David Mitchell

MODBURY LOCAL HISTORY SOCIETY

Our second meeting of our current series of talks was well attended and we were pleased to welcome members of the **Modbury Society** on

October 10th. The speaker on that occasion was Simon Garner, Area Warden of the National Trust.

Chairman Mary Timmis introduced Simon and his assistant, Lorna Sherriff, and the subject discussed was the acquisition of Wembury Point which until 1999 had been the site of the Naval Gunnery School, **HMS Cambridge**.

The National Trust purchased the site in 2006 from the Ministry of Defence, after a long period of discussions. The Trust has had to demolish many concrete buildings in order to restore the landscape back to nature.

In September 2006 I took part in a walk organised by the South Hams Centre of the Trust (I mistakenly referred to this walk in the October Messenger as being arranged by the Modbury Society, however a few Modbury people came) and we are amazed how much demolition has been carried out during the last year, especially when one considers that all the concrete walls were heavily reinforced with steel to resist nuclear attacks.

We were shown many illustrations of the area, including the Mewstone which was once occupied by a family who lived in a small house which is now a ruin. Wembury Point is gradually being made habitable for wildlife, especially birds like the Cirl Bunting.

Even a few Dartmoor ponies have been introduced to tidy up the scrubland. New paths have been laid and part of the original road has been kept. Anyone wishing to visit the site is advised to use the Wembury beach car park, below the Church, and take the coastal footpath to the west. Most of it is level.

Simon was given a vote of thanks by Roger Gage, Chairman of the Modbury Society, who said that we had enjoyed a thoroughly interesting evening. It was good that an organisation like the National Trust had been chosen to look after such an important piece of our heritage.

November 14th is the date of our next meeting when we are looking forward to greeting Dr Tom Greeves from Tavistock. His subject will be the story linking a mysterious ancient symbol found in religious sites in

China with wooden bosses in Westcountry churches.

The riddle of 'The Three Hares' has been explored by Dr Greeves who is an archaeologist, together with an art historian and photographer from Devon.

The symbol depicts three hares conjoined at the ears and chasing each other in a circle... it is found in 17 Churches in Devon, as well as in sacred sites in other parts of Europe, the Middle East and China.

Dr Greeves will be telling us about other places where the symbol has appeared and he believes that image could have been brought to the West along the Silk Road trade route.

Dr Greeves has said "What I find so exciting is that a medieval Buddhist monk in 1400AD looking at what were already ancient paintings in caves, would, if he had been able to travel to one of our little West Devon Churches, have had an understanding". The symbol's meaning remains obscure but in legends the hare is given magical qualities.

Come along to our meeting and find out more! 7.30 pm in the White Hart Assembly Room, Church Street.

Annual Membership £5.00. Casual visitors welcome £2.00 per meeting.

David Mitchell

MESSENGER VOLUNTEERS

We have an excellent group of volunteers who help deliver the Messenger every month and we are extremely grateful for their help. Many thanks in particular to Bob Hurrell who has been delivering the Messenger for some considerable time but now feels he needs to hang up his walking boots.

Are you able to help?

We are currently looking for volunteers in the Poundwell and Scalders Lane areas

If you have half an hour to spare once a month to help deliver the Messenger, please contact me on 01548 831324 or

e-mail prestons@onetel.com

Leslev Preston

**ST GEORGE'S
CAR PARK**
AN OPPORTUNITY TO LEAVE
YOUR MARK ON THE
LANDSCAPE
SATURDAY 10TH NOVEMBER
AT 10.00 AM

Ground work on constructing the new car park is nearly complete but we are looking for a team of willing volunteers to help plant the 1400 hedge whips and trees in the new hedgebank and copse.

The trees, stakes and rabbit guards will be provided and the work should not be too strenuous as the banks have recently been made out of topsoil. Please bring a spade or suitable implement if you wish to plant or just a willing pair of hands to help distribute the trees, stakes and guards. We will be starting at 10.00 am but everyone is welcome throughout the day.

**MEMORIAL
TREES**

Part of the landscaping will be the planting of 9 specimen trees of approximately 2m in height at the end of each bank that subdivides the car park. The trees have been selected and bought but, as we have been so fortunate to benefit from a generous donation for the car park, we felt that we could reciprocate in kind by making a donation to a charity.



Therefore, to raise money for Christian Aid, it has been agreed to offer, for a nominal fee of £20, the opportunity to anyone who would like to plant a tree in memory of someone. If you would like to plant a memorial tree, please contact Rob West on 830135

If you would like any more information please contact Robin Chambers on 831447 or Rob West on 830135.

VOLUNTEERS REQUIRED
MSF – Médecins Sans Frontières

In 2005 and 2006 St George's Church hosted events that raised funds for the important charity MSF. They provide doctors and nurses where they are needed most. It is said of MSF they are "first in and last out" of a trouble spot.

This year there is a Christmas Art and Craft Fair at the Market Hall, Fore Street, Kingsbridge from Monday 19th to Thursday 22nd November inclusive, supporting MSF. The commercial stall holders have been asked to provide volunteers from their villages and churches to be on the MSF stall at various times.

This stall will have collecting boxes, posters and leaflets provided by MSF and will sell cuppas and snacks to customers visiting the fair, and sell cakes and produce given by stallholders and friends in their villages for people to take away. All takings from this stall will go to MSF.

We are looking for a **VOLUNTEER COORDINATOR** to organise this stall. He or she, obviously a keen supporter of MSF, will contact the stallholders, cajole and persuade them to get their friends, villages and churches to help on the stall and provide produce for sale. The co-ordinator will possibly arrange a rota. I know this volunteer lives in Modbury, but who is he or she!? Please contact: **Andrew Thomas - 2A Poundwell House, Tel: 830664.**

POUNDWELL MEADOW

I would like to thank the Modbury Fruit & Produce Show Committee for their hard work all through the summer months looking after the flowerbeds in Poundwell Meadow car park. The tubs will be replanted for the winter, and the committee will continue to take care of the area.

Unfortunately the area has been, and still is being, used by

irresponsible dog owners as a dogs' toilet. This is not acceptable; please pick it up and put it in the dog bin, which is only a few steps away.

Also the area seems to be a meeting place for young people in the evenings as there is no where else for them to go, but please do not destroy the plants in the tubs and kick the bark all over the car park, as committee members have to keep sweeping it up and putting it back on the beds.

We are trying to do something to improve the area so please help to keep it looking nice.

Show Secretary



The organisers would like to thank everyone who put so much of their valuable time and effort into making this year's Fun Run and Fun Day such an outstanding success.

Between them, the school, Pre-School, Breakfast Club and Tiddlers raised £935 which will be put to very good use.

Particular thanks go to South Moor Vets for sponsoring the race medals and to David and Donna George of Kitchens by DeZine for providing the trophies - which added that bit extra to the event. Thanks also to Rob and Gill West and Julie and Richard Janes for their support.

It was meant to be a fun day out for all the family and it certainly lived up to its billing. Of course, the fab weather helped, but the atmosphere really did rock, helped by good crowds, an extremely tasty ram roast, a little liquid refreshment and plenty of live music from the A&E Band.

As ever, the list of people to thank is long but at the top of it are those, some completely unconnected with the school, who donated their time, money or goods to the event. And to the stalwarts who are always ready to lend a hand. Thank you, we couldn't have done it without you.

Fun Run Organisers



Modbury Tennis Team Members

Jane Bullen, Jane Rickman, Julie Cole, Glenys Miller
Anne Edmonds, Lynn Weeks, Sue Birch & Jo Owen

Modbury Tennis Club is celebrating a very successful 2007. Modbury 'A' Ladies team has won the Ladies Division in the South Devon Tennis League, and new team Modbury 'B' came a respectable fifth out of the six competing Ladies teams. In addition the Club completed the re-surfacing of its two outdoor courts in time for the start of the tennis season.

Team captain Anne Edmonds said: "We're thrilled to have won the Ladies Division, and it was great to be able to field two ladies' teams this year. We've had a lot of fun and played some tough matches against strong competition, particularly Kingsbridge and Ilington. Our new courts have also been a great success – even the competitors complimented us on our new playing surface!"

MTC recently organised a private visit to Greenway, the former home of Agatha Christie on the river Dart. The visit was generously hosted by National Trust Property Manager & club member Robyn Brown. Robyn gave an excellent presentation about the origins of Greenway, how Agatha Christie came to buy it (for £6000!) and how she spent her time there.

One of Robyn's initiatives that caught our eye was the idea of offering Murder Mystery Evenings in Agatha Christie's own dining room furnished with her original furniture, with dinner cooked in her kitchen. This looks like being Number One on Modbury Tennis Club's list of future events!

MTC's energies are now being directed towards running a disco at the White Hart on Saturday 10th November with the incomparable **INCOMPETENT BROTHERS**. Tickets cost only £5 and all funds raised go towards MARS' Big Lottery Application for the Community Sports & Recreation Centre.

New tennis members are always welcome to join and play in club sessions and league matches, or simply use the new courts at any time that suits them.

Family membership is still only £45.00 pa,
single £27.50, junior £10.00.

Contact: modburytennisclub@btinternet.com
for more information.

**MODBURY
ROVERS**



After an encouraging start to the season with Modbury being the only team still unbeaten in Division 3 another good month of results continued.

A 7-1 victory over Ivybridge team AFC Duke started the month off in fashion followed closely by a close encounter away to Wembury resulting in a 3-1 win for the Rovers.

With Modbury sitting well near the top of the table a difficult cup tie with Division one outfit "The Old Smithy" ended in disappointment although Modbury did take the game to their opponents.

Even with a disappointing display away at Cobra, Modbury came out 4-2 winners. During the match was the unfortunate incident with a clash of heads leaving top scorer Mark Cooney having to leave the pitch with concussion.

**Upcoming home fixtures are:
28/10/07 AFC Duke, 11/11/07 Cobra.
All matches are 10.30am Kick Off.**

DARTMOOR WALKING GROUP

There's no better time to walk Dartmoor than the winter months
If you would like to join a group walking one or two Sundays a month, starting with 10 miles or so on 11th November, contact:

**David Edmonds on 01548 830247
or email david.edmonds@gmail.com**

Good boots, a stick and waterproofs essential
Dogs welcome



**MODBURY
COMMUNITY
CHRISTMAS
CARD**



Once again Christmas is looming over us and if you're anything like me, stress closely followed by panic will be setting in as you wonder how you will ever have the time to fit in all the extra jobs that Christmas creates!

This is where our Christmas card scheme can come in very handy! Instead of writing Christmas cards to all your local friends, simply donate £5 to Modbury School and have your family's names added to our ever growing list of contributors.

In the past few years all your support for this scheme has enabled the school to purchase much needed equipment and books for the children that will be enjoyed for years to come. We not only save money by doing this (let's face it, Christmas cards are getting pricey), we also help preserve our environment and cut down on recycling waste, save ourselves some precious time and can feel confident in the knowledge that our £5 contribution is investing in our children's future.

You do not have to be a parent of Modbury School - anyone can be involved.

Simply put your donation in a sealed envelope and either deliver it to the School Office or post it through my letterbox. My address is: **14, Church St, Modbury**, (I am next door to the Chandelier Shop). Please remember to put on the envelope ALL the names that you wish to appear on the Community Christmas Card, this may or may not include your surname, it is entirely up to you. I will enter it on the card exactly as written on the envelope.

The Community Christmas Card will be designed by our Art Club Children and be displayed in Modbury for all to admire, plus a slightly smaller version will appear in the December Messenger.

The cut off date for contributions is the 10th of November. This means that you only have a few days to do this!!! SO DON'T FILE THIS IN THE 'TO GET AROUND TO ANOTHER DAY' PILE DO IT NOW!!

Liz Hughes

**UNDER NEW MANAGEMENT
'Pips' Fruit and Veg**



The Pickles Family (Roger, Helen and Clare) have handed over the reins of 'Pips Fruit & Veg' shop. We wish them a long and happy retirement.

Neil Hawken will be taking over the business. Neil is married to Hazel, a primary school teacher at Plympton and they have a baby daughter, Poppy. He currently lives in Brixton, but most of his life was spent growing up on Gnaton Estate near Yealmpton, where his father was Gamekeeper and supplied Wilkinsons, Butchers in Modbury with pheasants for many years.

As he grew up he found a growing interest in the countryside and the farming community, spending much time among the fruits and vegetables of Gnaton's large walled gardens. He started working at the Kitley Pick Your Own and was soon in a position of responsibility. Over thirteen years he saw many hot, cold and wet seasons pass by before finally being tempted in to the Riverford Farm Shop by local Modbury man, Peter Maher. He was the Assistant Manager of the shop and over the two year period learnt a lot about what makes a shop good and the customers happy.

His aim for 'Pips' is to expand upon the existing range of fresh local produce, whilst maintaining a balance between organic and conventional produce, thus providing the community with a quality traditional service that works alongside other businesses in the area.

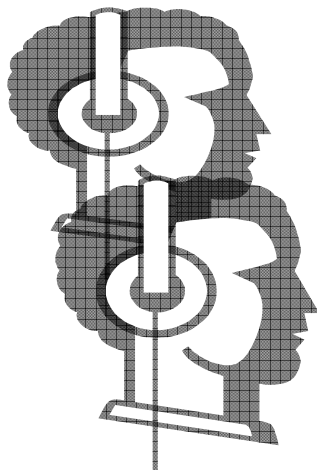
We know that Modbury will wish him well and will continue to support 'Pips' - one of our local shops

**MODBURY SILVER
THREADS
November**

Tuesday 6th
Meeting in Club 1.45 pm

Tuesday 20th
Meeting in Club 1.45 pm

THE INCOMPETENT BROTHERS DISCO



Dance the night away to your favourite grooves at
The White Hart Assembly Rooms

In aid of The
Community Sports & Recreation Centre

Sat. 10th November 2007 from 7.30pm
Tickets £5 from The White Hart
or Mike Tillett 830597

MARS UPDATE

Excellent progress on the fund raising front has been made during the last month. We now have a total fund of **£24,745 in cash and pledges**. A **BIG THANK YOU** to all, and in particular to:

Modbury Parish Council, Modbury Scouts, Mr Tony Major, Mrs Margaret Barnett, Simon Wilkinson of Wilkinson Butchers, Miss Mary Rose Rogers, Nick Grodhunce of Nicholas Hair & Beauty, Sally Hosking, Rob West of R West & Son, The Modbury Produce Show, The Modbury Inn, The Brownston Gallery, John Stevens of The White Hart, David Rickman, Peter Watts and Richard Mitchell.



MODBURY COOK BOOK

Please send your favourite recipes to prestons@onetel.com NOW!! (or leave in the Parish Office). Many thanks.

MARS LOTTERY WINNERS – NOVEMBER:

Mr Shepley: £26, Mrs Farrell £15.60
S Daws, £10.40

Don't forget you can join the **MARS LOTTERY** by ringing Lynn Weeks on 01548 830007

You are invited to ...



Dame Hannah Rogers Trust

Christmas Fayre

Thursday 15th November 2007
10am – 4pm

Kitley House Hotel, Yealmpton

Join us for a fabulous day of festive cheer in the sumptuous surroundings of Kitley.

Enjoy fine food and a fantastic atmosphere as you cast your eyes around two marquees full of fine arts and crafts, perfect presents and sensational gifts.

Tickets **£10 - Entry, Lunch & a Glass of Wine**
£7.50 - Entry & Devonshire Cream Tea
£5 - Entry Only

For tickets and information contact Rachael on (01752) 898184 or email rachael@dhrt.co.uk



Registered Charity Number 306948



Potential to Achievement

HARVEST FESTIVAL AT ST GEORGE'S



Very many thanks, first to all those, including the members of the Methodist Church, who so generously gave fresh produce, tins, jams, eggs and other household items in support of the three charities. The Salvation Army, the Shekinah Mission and Plymouth Women's Refuge were most grateful to receive these gifts.

Secondly, thanks to all those who gave not only their time but also greenery and flowers (especially Mervyn Bennallack for the wonderful Michaelmas daisies) to decorate the church so beautifully for Harvest Festival.

Bridget Robinson

The Modbury Inn

Brownston Street, Modbury PL21 0RQ. Tel: 01548 830275
e-mail: colin@modburyinn.fsnet.co.uk www.modburyinn.co.uk

Christmas Menu 2007

Homemade Soup of the Day
Smoked Mackerel Paté with Melba Toast
Sautéed mushrooms in a creamy garlic sauce and warm toast
Spicy Meatballs with a tomato salsa

~~~~~

*Roast Turkey with all the trimmings & homemade Cranberry Sauce*  
*Roast Sirloin of Beef, Yorkshire Pudding & homemade Horseradish sauce*  
*Smoked haddock with spinach and a cheese sauce*  
*Roast duck breast with a poached pear and cherry sauce (£3.00 supplement)*  
*Pork loin with sage and apple mash and a rich port sauce*  
*Vegetarian dish of the day*

~~~~~

Christmas Pudding and Brandy sauce
Fruits of the Forest Cheesecake
Chocolate bread and butter pudding
Fresh Lemon Tart

~~~~~

*Coffee and mints*

*All main courses served with fresh vegetables of the day*

**Price £14.95 per Head**

*A £5.00 per head deposit is required with the booking please*

~~~~~AVAILABLE FOR ADVANCE BOOKINGS ONLY~~~~~

AQUA Hair Design

Modern Organic Products
(M.O.P.)

MOP is a brand that offers a new
standard in professional products
It creates simple solutions that
are organic

Late opening Fridays
8.00 pm

No 7 Modbury Court

01548 831260

CHRISMAS BINGO GOOD PRIZES

WEDNESDAY
14TH NOVEMBER

MODBURY CLUB

EYES DOWN 7.30 PM

IN AID OF MODBURY SHOW

WALTERS CHRISTMAS TURKEYS

Treat yourself this Christmas to a quality
Traditional Farmfresh turkey
carefully hand reared
At Scobbiscombe Farm, Kingston.

- To place an order or for further information please ring the Walters family at Scobbiscombe Farm on (01548) 810259

Now guaranteed by Golden Promise Assurance to ensure the highest animal welfare and the best traditional taste (see www.golden-promise.co.uk)

**Choose from Free-range Bronze
or Barn-reared White turkeys**

Potatoes now available at Whympton Farm

Mrs C V Harrington MCSP; MMACP
Chartered Physiotherapist

Registered with the Health Professional Council
And all Health Insurance Companies

DOMICILIARY SERVICE / HOME VISITS



Tel: 01548 810023
Mobile: 07776393927

Member of the Organisation of
Chartered Physiotherapists in Private Practice

USED CARTRIDGES TONERS & OLD MOBILES

Please help the MARS project by taking your old
cartridges, toners & mobiles to the
Collection Point at:

**LUSCOMBE MAYE
BROAD STREET, MODBURY**

**Many thanks to all those who have already
donated their toners and mobile phones**



TALL ORDERS

Landscaping & property maintenance

~lawn mowing ~hedge trimming
~brushcutting ~clearance....

HARD LANDSCAPING

~fencing ~decking ~patios
~natural stone walling

**CHAINSAW & TREE WORK
UNDERTAKEN**

Chipper available/logs supplied

For a friendly free quote call

James Tall on 01548 831139 or

mobile 07967258318

(fully insured)

Accountancy Services

- Accounts
- Tax Returns
- Start-ups and Business Plans
- Bookkeeping, Payroll & VAT
- Fixed fees in advance
- Self-Assessment and CIS

Contact Alex Smith (ACA) on

01752 551 888

To arrange a free initial, no obligation meeting



Martin Ley PLUMBING REPAIRS AND NEW INSTALLATIONS

- * Bathrooms
- * Showers
- * Kitchens
- * General Repairs

Small jobs welcome

Tel: Modbury 830609

Mobile: 07811 934551

Acupuncture Can Help



Fiona Matthews SRN LicAc MBACc

Registered acupuncturist and a member of the British Acupuncture Council, providing acupuncture treatment since 1997, from her clinic at Sunnydale Natural Health Centre in Ivybridge and also at the Plymouth Nuffield Hospital

Specialising in :-
stress relief, pain management, fertility, menopausal symptoms, digestive disorders and facial enhancement acupuncture (non surgical facelift)

Sunnydale Natural Health Centre,
Cornwood Road, Ivybridge

For further information or to make an appointment please
contact Fiona Matthews

Telephone **01752 895401**
Mobile **07767 665677**



Kingsbridge Eye Care
1 The Promenade
The Quay,
Kingsbridge
Tel 01548 856 854

'Look no further...'

NHS/Private Eye Examinations
Everything from designer sunglasses
to low cost lens and frame packages
Contact Lens Specialists

Testing daily

**A personal and professional
service by Optometrists:**

Nigel Frost BSc (Hons) F.C. Optom,
Angela Hickman BSc (Hons) F.C. Optom
Kathryn Poole BSc (Hons) M. C. Optom

Nigel Frost
Optometrist
3 Chene Court
Modbury
Tel 01548 830 944



MODBURY EDUCATIONAL FOUNDATION

If you are resident in Modbury and undertaking a Vocational, Further or Higher educational course, you can apply for a small grant by writing to:

**Revd Neil Barker
The Vicarage, Church Lane,
Modbury PL21 0QN**

by 30th November

This is the final notice
for this year

ANTIQUe FURNITURE REPAIRS & RESTORATION

Veneer Repairs, French Polishing
Hand stripping & Re-finishing
Wood-turning

CANEWORk & RUSH SEATING
Danish Cord & Seagrass



**Guye Roberts
MASTHEAD**
Parsonage Road
Newton Ferrers
Plymouth
DEVON PL8 1AS

01752 872805

Website : www.guye.co.uk
Email : guye@guye.co.uk

Robert Houcke DOMESTIC APPLIANCE REPAIRS

All makes of electrical
appliances repaired by an
experienced engineer
covering the South Hams.
Specialising in

BOSCH

NEFF

SIEMENS

01803 858411

07714 386745

Avonberry Garden Service:

Time to revitalise your garden or create something new?
We offer a full, professional gardening service, from help
with design, to renovation, pruning, and general care.
Call for advice and quotations.

Year round care given to your garden



Telephone: 01548 830536
or 07977 534125
Email: Gandhservices@aol.com

A DATE FOR YOUR DIARY

**Wednesday 21st November
12 noon – 2 pm**

**A Soup and Roll Lunch
with Tea or Coffee for
£2.50**

In
THE MEMORIAL HALL

(Please note change of venue this year)

**Proceeds to St George's Church
and a donation to
MARS Pavilion Appeal**

DON'T MISS

**The Early Bird Christmas Bargains
On
The Christmas Bring & Buy Stalls**

Contributions of unwanted gifts
and homemade fare welcomed

Bring a friend and come and enjoy
this popular event

Transport can be arranged
Contact 830595

EDEN LANDSCAPING AND TREE CARE



- Lawn Mowing
- Hedge cutting
- Garden clearances
- All tree work (NPTC Qualified)
- Chipping and chainsaw work
- Fully insured
- Strimming
- Turfing
- Pressure washing

**Logs and wood chip for sale all year round
for a free friendly quote call Adam Sloman on
01548 830611 or (07760 324419)**



'2 for £12' Seafood Lunch

Celebration of the Oyster season
2007 'All you can eat oysters both
Bigbury Bay and Native Oysters'

'Oyster Shack Christmas menu with
a seafood twist' – now taking
bookings

**Oyster Shack Bigbury 01548 810876
Oyster Shack Salcombe 01548 843596
www.oystershack.co.uk**

KITCHENS BY
DeZine

**Form and Function
Working in Harmony**

**Quality kitchens, appliances and accessories designed and installed
around you and your home**

All of our kitchens are individually designed to suit your lifestyle

t. 01548 830 819 m. 07766 821 548 f. 01548 831 519 info@kitchensbydezine.co.uk
Mackintosh House □ Palm Cross □ Modbury □ Devon □ PL21 0QZ www.kitchensbydezine.co.uk

ROCKSHOP

Fridays 7.00 – 9.00 pm
Modbury School Hall
10p Entrance

Younger Group Ages 8 – 11

Older Group Year 7
Upwards

Hockey, Basketball, Giant
Skipping, Football, Craft,
Drama, Tuckshop and
also for the older
group: Community
Activities, Occasional
Discos and Live Bands.

A Christian Youth Group
established in Modbury
for over 30 years.

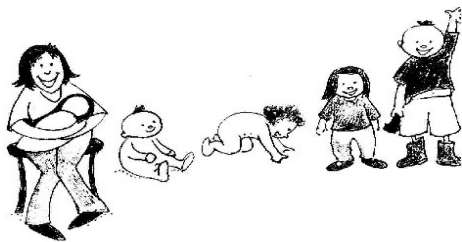
EVERYONE WELCOME

Contact: David 831589 or
Simon 830857

MODBURY TIDDLERS

A Community Run Group for
Small People aged 0 – 5
(and for the people who wipe their
noses!)

**PLAYTIME FOR THEM!
COFFEE AND A CHAT FOR
US!**



Fridays 9.30 – 12 noon
£1.50 per child

@Modbury Memorial Hall
Enquiries ring Georgie:
01548 831038

A.R.B. GARDEN SERVICES

EXPERIENCED
TRADITIONAL GARDENER

**MAINTENANCE &
SENSITIVE
RESTORATION**

CV AND
REFERENCES AVAILABLE

Alan Boyce
16 Cromwell Park Modbury
Ivybridge Devon PL21 0RS

**01548 830747
07989 415385**

MODBURY BADMINTON CLUB

Memorial Hall
Tuesdays
7.30 – 10 pm

*New members always
welcome
For further information
please contact:*

Gill Jolly

Tel: 01548 831263

SHORT MAT BOWLS

The Modbury Short Mat
Bowls Club

Meet every

WEDNESDAY

7.00 pm at the
Memorial Hall

**New members are
welcome**

Come along and try it – it's fun!



NOVEL FORUM

We shall be meeting at the home of
Ann and Mike Oakins, 1 Benedict
Way (with many thanks) on
Wednesday 21 November at 7.45
pm when we shall discuss the
following books:

*Robert Harris
Imperium*

*Somerset Maugham
The Painted Veil*

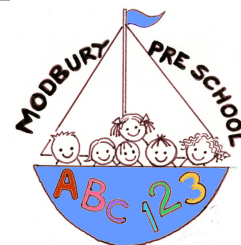
*Tim Pears
In the Place of Fallen Leaves*

To enquire about the availability of
books, please contact
Ann on 830550 or
Mary-Rose on 830310

MODBURY CARING

Office Hours

**Monday 2 – 5 pm
Thursday 9 – 12 noon
Telephone
01548 830118**



**FULL DAYCARE
5 DAYS A WEEK**

Outstanding OFSTED Report
Among top 3% of country!
Your 2½ – 5 year old can now
attend preschool all day

Toddler Group Thursday
1.15 – 3.45 pm, all welcome, with
parent/adult

2 year olds are welcome
Tuesday to Friday afternoons
Please phone or drop by to enquire
about sessions to suit your needs.

**Modbury Preschool
Back St, Modbury**

01548 831477

Registered Charity No. 1039616

Advertising Tariff for The Messenger

In order to support the publication of The Messenger, advertising relating to business, or of a commercial nature will be charged at the rates shown below.

Information for community use will continue to be published free of charge.

Single Insertion

| | |
|------------------------|----------------------|
| 1/9 th page | £10.00 per insertion |
| 2/9 th page | £20.00 per insertion |
| 1/3 rd page | £30.00 per insertion |
| 1/2 page | £40.00 per insertion |

Three Insertions

| | |
|------------------------|----------------------|
| 1/9 th page | £8.00 per insertion |
| 2/9 th page | £16.00 per insertion |
| 1/3 rd page | £24.00 per insertion |
| 1/2 page | £32.00 per insertion |

Six Insertions

| | |
|------------------------|----------------------|
| 1/9 th page | £6.00 per insertion |
| 2/9 th page | £12.00 per insertion |
| 1/3 rd page | £18.00 per insertion |
| 1/2 page | £24.00 per insertion |

Eleven Insertions

| | |
|------------------------|----------------------|
| 1/9 th page | £4.00 per insertion |
| 2/9 th page | £8.00 per insertion |
| 1/3 rd page | £12.00 per insertion |
| 1/2 page | £16.00 per insertion |

Artwork of good black and white copy to be supplied.
Payment must be made in advance.

Cheques should be made payable to Modbury Parish Council and sent to The Parish Office, 6, Modbury Court, Church St. Modbury PL21 0QR.

**For further information
please contact**

**David Hansford on
01548 830222**

MODBURY PARISH COUNCIL PARISH OFFICE

6 Modbury Court, Church Street
Modbury
Tel: 01548 830222
e-mail modburypc@tiscali.co.uk

Hours of Business-
Mondays 9.00am-1.00pm

Parish Surgery
10 – 11 am every Saturday

Planning Applications

Notices of planning applications lodged with SHDC are displayed on the Parish Noticeboard, outside the Post Office. Copies of plans relating to these applications can be inspected at the Parish Office during above office hours or when a Councillor is on duty.

Contacting Parish Councillors

Parish Councillors attend the Parish Office, on a rota basis, on Saturday mornings from 10.00 - 11.00am. Should you have any parish matter you would like to discuss come along to the Office at 6 Modbury Court. You can also call in to the Office on Mondays from 9.00am - 1.00pm and speak to the Clerk, David Hansford.

He can also be contacted by phone on 01548 830222 or e-mail at modburypc@tiscali.co.uk

At all other times you can leave a message either by phone or e-mail (see above) or alternatively you can write a letter or speak at the public forum held at the beginning of each monthly meeting of the Parish Council, held on the second Monday of each month at 7.00pm in the annexe of the Memorial Hall.

MESSENGER CLOSING DATE

*The closing date for the
December Messenger is
16th November*

Please send all copy, by e-mail to prestons@onetel.com or deliver to the **Parish Office** (please note that all advertisements should be submitted **ONLY** via the Parish office – see below).

Payment for all advertisements must be made in advance. Cheques should be made payable to Modbury Parish Council and sent to The Parish Office, 6, Modbury Court, Church Street, Modbury PL21 0QR. For further information please contact David Hansford on 01548 830222.

The Modbury Messenger is published by The Modbury Parish Council and is printed by SHDC, Follaton House, Totnes.

*The views expressed in the
Modbury Messenger do not
necessarily represent those of
The Modbury Parish Council.*

SOUTH HAMS DISTRICT COUNCILLORS

Our South Hams District
Councillors are:

**Geoffrey Fielden –
830916**

**Mark Lawrence –
830423, or
mark.lawrence@totalise.co.uk**

Our representative on
DEVON COUNTY COUNCIL
is William Mumford and he
can be contacted on:

**01752 340967 or
william.mumford@devon.gov.uk**

MODBURY DIARY – NOVEMBER 2007

| | | | |
|-------------------------------|---|---|---|
| Thursday 1 st | Lupridge Singers | St George's Church | 7.30 pm |
| Friday 2 nd | Modbury Tiddlers
Rock Shop | Memorial Hall
School Hall | 9.30 am – 12 noon
7.00 pm – 9.00 pm |
| Saturday 3 rd | British Legion Coffee Morning | Modbury Club | 10.00 am – 12 noon |
| Monday 5 th | Police Surgery
Annual Fireworks Display | Parish Office
Recreation Field | 5.00 pm – 8.00 pm
7.00 pm |
| Tuesday 6 th | Badminton Club | Memorial Hall | 7.30 pm – 10.00 pm |
| Wednesday 7 th | Short Mat Bowls | Memorial Hall | 7.00 pm |
| Friday 9 th | Modbury Tiddlers
Rock Shop | Memorial Hall
School Hall | 9.30 am – 12 noon
7.00 pm – 9.00 pm |
| Saturday 10 th | Tree Planting
British Legion Coffee Morning
Tennis Club Disco | St George's Car Park
Exeter Inn
White Hart (Upstairs) | 10.00 am
10.00 am – 12 noon
7.30 pm |
| Sunday 11 th | Remembrance Day
Modbury Rovers | Palm Cross Green
Recreation Field | 10.00 am
10.30 am |
| Monday 12 th | Parish Council Meeting | Memorial Hall Annexe | 7.00 pm |
| Tuesday 13 th | Badminton Club | Memorial Hall | 7.30 pm – 10.00 pm |
| Wednesday 14 th | History Society
Christmas Bingo
Short Mat Bowls | White Hart (Upstairs)
Modbury Club
Memorial Hall | 7.30 pm
7.30 pm
7.00 pm |
| Friday 16th | Modbury Messenger
Modbury Tiddlers
Rock Shop | Deadline
Memorial Hall
School Hall |
9.30 am – 12 noon
7.00 pm – 9.00 pm |
| Tuesday 20 th | Badminton Club | Memorial Hall | 7.30 pm – 10.00 pm |
| Wednesday 21 st | Soup & Roll Lunch
Short Mat Bowls | Memorial Hall
Memorial Hall | 12 noon – 2.00 pm
7.00 pm |
| Friday 23 rd | Modbury Tiddlers
Rock Shop | Memorial Hall
School Hall | 9.30 am – 12 noon
7.00 pm – 9.00 pm |
| Sunday 25 th | Work Party | Millennium Meadow | 10.00 am – 1.00 pm |
| Tuesday 27 th | Badminton Club | Memorial Hall | 7.30 pm – 10.00 pm |
| Wednesday 28 th | Short Mat Bowls | Memorial Hall | 7.00 pm |
| Friday 30 th | Modbury Tiddlers
Christmas Lights Switch On
Rock Shop | Memorial Hall
Modbury
School Hall | 9.30 am – 12 noon
6.00 pm
7.00 pm – 9.00 pm |

Beauty Therapy

dermatologica

- Indian Head Massage
- Holistic Massage
- Reflexology
- Wrinkle Reduction
- Eye Lash Perming
- Waxing - including Brazilian
- St Tropez Tanning
- Acrylic Nails
- Skincare

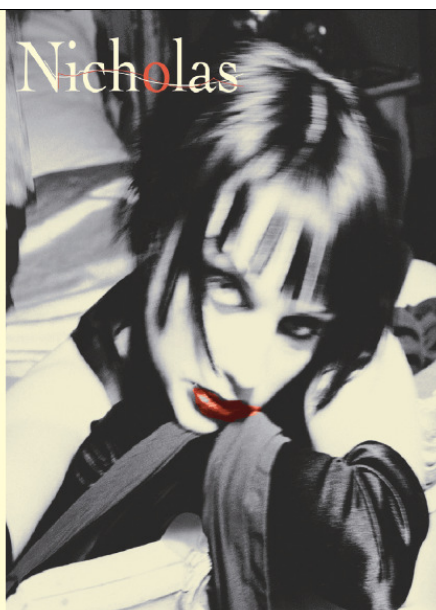
Special Signpost Offer!

10% Off ALL treatments*
on production of this advert

*valid until 31st October '07

Nicholas

London House
Church Street • Modbury
tel: 01548 830152



MODBURY CARING 100 CLUB DRAW WINNERS

July 2007

| | | |
|-----------------|-----------------|-----|
| 1 st | Mrs P Maltby | £15 |
| 2 nd | Mrs N Mitchell | £10 |
| 3 rd | Mrs M Stevenson | £5 |

August 2007

| | | |
|-----------------|---------------|-----|
| 1 st | Helen Prosser | £15 |
| 2 nd | S Sutherland | £10 |
| 3 rd | A Wardell | £5 |

September 2007

| | | |
|-----------------|-------------|-----|
| 1 st | E Lamb | £15 |
| 2 nd | E Lowry | £10 |
| 3 rd | M Stevenson | £5 |

Winners of the 100 Club are posted
monthly in the doctors' surgery.