

# Modbury Messenger



## A family walk to Brownston

....along the path Miss Husband used to walk every day to Modbury School

On **Sunday 12<sup>th</sup> September** the Modbury Society are organising a family walk to Brownston along the path taken daily by Miss Husband, who was a teacher at Modbury School.

We shall meet at **2.15pm prompt** in the **Poundwell Car Park** behind the White Hart and finish in **Brownston** with cream teas and cake. Tea will be available from 4 – 5.30pm and we are organising lifts for those who don't wish to walk back.

The walk is open to all, members and non-members, but under 14s must be accompanied by an adult. Along the way there will be a quiz for the children and there will be a tree poster for all children taking part.

Dogs are welcome, but must be kept on leads and we must all follow the countryside code. Sensible shoes or, if there has been recent rain, wellies are advised.

*Nicky Shepley*

**MODBURY'S OFFICIAL PARISH COUNCIL WEBSITE**  
[www.modburypc.co.uk](http://www.modburypc.co.uk)

Do you have a local business with a website? If so why not have a link on the Parish Website.

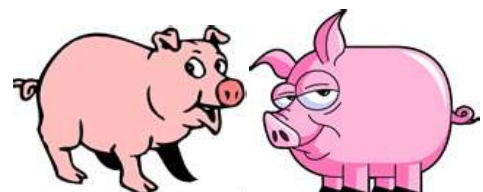
Contact Jean Carlyle-Lyon at [jean.carlylelyon@gmail.com](mailto:jean.carlylelyon@gmail.com). There is no charge.



**ANOTHER GREAT FRUIT AND PRODUCE SHOW– See page 6 for full report**

We would like to say a big, big thank you to the people who saved our bacon on the 18<sup>th</sup> July

Love from....  
Thelma and Louise



## AROUND THE CHURCHES



### St Monica's Roman Catholic Church

St Austin's Priory  
01752 892606  
Sundays  
9.00 am Mass

*Everyone Welcome*

---

---

### Modbury Methodist Church

#### Superintendent Minister

Rev John Beadle  
(Tel 01548 852073)

#### Minister

Rev Gordon Davis  
(Tel 01803 862350)

#### Sunday Services

10.30 am in  
St Monica's Church  
This is a small friendly group  
Do come and join us

#### September Services

##### Sunday 5th

Rev John Beadle  
(Holy Communion)

##### Sunday 12th

Dr John Prebble

##### Sunday 19th

Mrs Sally Sargeant

##### Sunday 26th

Rev Alan Grist

## LOST TREASURE

Listening to friends' recent adventures reminded me of our own summer holidays when the children were young. Part of the bedtime routine was reading them a story, like "Caravan Holiday". I think it was more to get us in the mood rather than the children. They didn't need much persuading!

Recently our grandchildren, Lily and Charlie, were with us and the story was Enid Blyton's "The Treasure Hunters". Three intrepid children (no, not the Famous Five this time) set out to find long lost family treasure whilst holidaying with their grandparents in their old country house. Each day's adventure seemed to bring them a step closer, but often they were frustrated by events they could not control.

And I remembered how I was once struggling to find treasure, or at least something deeply hidden. My search for faith was frequently frustrated by meeting others who seemed to have found it, a relationship with God, which meant a great deal to them; more than merely believing He existed. And other people trying to explain didn't seem to help very much.

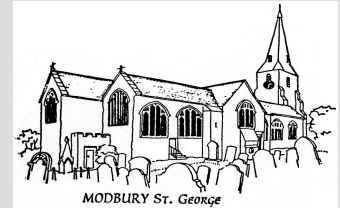
Going back to treasure for a moment I suppose the nearest most of us get to finding it is actually when we've lost something valuable or very important to us. Recovering a watch, a ring or even a pair of reading glasses can have us practically jumping for joy. It's funny, isn't it, that's exactly how God seems to respond when someone who was lost to Him is found.

In the story of the lost sheep it is the shepherd himself who goes out on the hillsides, finds the lamb, brings it home and throws a party to celebrate.

Maybe we can afford to relax a little in our search for faith and allow ourselves to believe that after all it is we who are the treasure and it is God who is seeking us.

Now I really must speak to Lily and Charlie about "The Treasure Hunters". You see, they took the book home before we finished the story.

*Mike Jefferies*



### St George's Parish Church, Modbury

*Connecting people to God*

#### SERVICES AND EVENTS SEPTEMBER

##### Thursday 2<sup>nd</sup>

9.15 am ish – Noah's Ark

##### Sunday 5<sup>th</sup>

9.30 am – Holy Communion  
3.00 pm – Treasure Hunt & Cream Teas

##### Thursday 9<sup>th</sup>

9.30 am – Holy Communion

##### Saturday 11<sup>th</sup>

Devon Historic Churches Ride

##### Sunday 12<sup>th</sup>

8.00 am – Holy Communion  
9.30 am – Battle of Britain Service  
3.00 pm – Cream Teas

##### Thursday 16<sup>th</sup>

9.30 am – Holy Communion

##### Saturday 18<sup>th</sup>

7.00 pm - Harvest Supper  
in St George's Church

##### Sunday 19<sup>th</sup>

9.30 am – Harvest Service

##### Thursday 23<sup>rd</sup>

9.30 am – Holy Communion

##### Sunday 26<sup>th</sup>

8.00 am – Holy Communion  
9.30 am – Morning Prayer

##### Thursday 30<sup>th</sup>

9.30 am – Holy Communion

##### Modbury Education Foundation –

Applications for grants towards further education need to be made in writing to The Vicar by the end of this month

#### BATTLE OF BRITAIN SUNDAY

The Battle of Britain officially lasted from 10<sup>th</sup> July to 31<sup>st</sup> October 1940: it is said that "Sunday the 15<sup>th</sup> September 1940 was undoubtedly the decisive turning point in the Battle of Britain". September 12<sup>th</sup> this year is Battle of Britain Sunday and there will be a special focus in the 9.30am Service at St George's Church.

As we remember those who fought for the United Kingdom, let us consider our service in the Kingdom of God.

## PLANNING

SHDC granted and Modbury Parish Council recommended refusal for the replacement dwelling at Greenvale, Stolford.

SHDC granted and Modbury Parish Council recommended refusal for two lean-to extensions to an agricultural building at Kenedon Farm.

Modbury Parish Council recommended approval and SHDC granted a porch and new roof at 4 Benedict Way.

Modbury Parish Council recommended approval for a conservatory and conversion of single storey barn to ancillary accommodation at Churchlands Farm.

## HOW CAN SOUTH HAMS CVS HELP YOU?

South Hams Community & Voluntary Services (South Hams CVS) started in 1995. We are a charity, owned and run by local members to develop, support and be a voice for the district's voluntary and community sector.

We provide a wide range of services to enable local organisations to develop and flourish. For instance we can provide advice and information on issues such as becoming a charity, supporting volunteers and committee responsibilities. We try to represent the voluntary and community sector on local partnerships and provide up to date information about relevant issues and consultations.

The most frequent challenge facing village organisations is finding funds. Funding requests come in all shapes and sizes from a new tea urn to replacing a church roof. Graham, our Groups Development Officer, can identify possible funders and help you write a funding application that we hope will be successful.

Four years ago South Hams CVS opened a volunteer centre. The centre helps organisations to find volunteers and helps local people to find the volunteering opportunity that best suits their needs and talents. We have an extensive database and offer free posting of opportunities on a national website.

This year, to celebrate its fifteenth anniversary, South Hams CVS is running a project to ensure that people and small organisations in all the parishes in the district know about us and are able to use our services. So.....

**Do you have an idea and would like help to set about making it a reality?**

**Does your group have a project and all it needs is the money to implement it?**

**Do you wish to volunteer and want to know where to start?**

If you do, or know anyone else who does, contact us on 01803 862266, at [cvs@southhamscvs.org.uk](mailto:cvs@southhamscvs.org.uk) or visit [www.southhamscvs.org.uk](http://www.southhamscvs.org.uk)

Want to know more? We are able to give talks/displays at parish meetings or events to give further information about what we offer. Please don't hesitate to contact us.

*Nick Cape, Community Engagement Officer (Health)*

## POLICE CONTACT DETAILS

**General Enquiries:** To report crime and for information or advice) 08452 777444

**Emergency:** 999

**Minicom:** (Textphone for use by the hard of hearing and speech impaired) 01392 452935

**Internet:** [www.devon-cornwall.police.uk](http://www.devon-cornwall.police.uk)

**Crimestoppers:** (To give anonymous information) 0800 555111

**Your local Neighbourhood Police Team are:**

Sergeant Jane Corkhill (Neighbourhood Team Sgt)

[Jane.Corkhill@devonandcornwall.pnn.police.uk](mailto:Jane.Corkhill@devonandcornwall.pnn.police.uk)

PC Rachel Ward (Neighbourhood Beat Manager)

[Rachel.Ward@devonandcornwall.pnn.police.uk](mailto:Rachel.Ward@devonandcornwall.pnn.police.uk)

PCSO Stacy Thorn (Police Community Support Officer)

[Stacy.Thorn@devonandcornwall.pnn.police.uk](mailto:Stacy.Thorn@devonandcornwall.pnn.police.uk)

PCSO Paul O'Dwyer

(Police Community Support Officer)

[Paul.ODwyer@devonandcornwall.pnn.police.uk](mailto:Paul.ODwyer@devonandcornwall.pnn.police.uk)

**The Neighbourhood Team can also be contacted via the general enquiry number listed above.**

## JOINT POLICE/COUNCIL SURGERY: SEPTEMBER

9<sup>th</sup> and 23<sup>rd</sup> September

from 11.00 am – 12 noon at The Parish Office  
6 Modbury Court, Modbury

Run by PC Rachel Ward  
Parish Clerk Mr David Hansford  
and Police Community Support Officer, Stacy Thorn

## MODBURY ASSOCIATION OF RECREATION AND SPORT

APPLICATIONS are invited for the post of Honorary Secretary to Modbury Association of Recreation and Sport (MARS) to succeed the present Secretary who is to relinquish this post shortly.

Full details of the duties involved can be obtained from the present Secretary but these mainly include calling meetings (approximately 10 per year), producing Minutes of each meeting and carrying out any decisions which may have been made by the Committee.

Anyone interested in this post is invited to contact Peter Watts (Chairman MARS) on 01548 830648 for further information.

## MODBURY TOURIST INFORMATION CENTRE

Tel: 01548 830159  
[www.modburytic.org.uk](http://www.modburytic.org.uk)

I am pleased and honoured to have been appointed the Manager at the TIC. I hope that I can continue the fantastic work that Sue Birch and the team have done in the past. Thank you, Sue!

I will shortly be contacting accommodation providers and local traders regarding advertising in the Modbury Guide 2011. I hope that many of you will be able to support this very informative brochure which links you all to prospective visitors from home and abroad.

I would also like to bring to your attention two events that are coming up shortly.

Firstly, the **Heritage Open Days, 9<sup>th</sup>-12<sup>th</sup> September**, an opportunity to visit many places that are normally closed to the public, or others that would usually charge for admission. There are over 4000 sites across England, many of them are in our locality and would be well worth a visit. In particular Castle Drogo, Coleton Fishacre and the very local, Mothecombe House. For walkers, there is a guided walk alongside the River Erme exploring prehistoric remains of the Bronze Age settlements, or find out about Plymbridge Woods in the 1800s by listening to the stories of Mr & Mrs Gullet and their friends who lived and worked there.

Secondly, for the more energetic, the **South Devon Walking Festival** is from **25<sup>th</sup> September - 3<sup>rd</sup> October**. A programme of 33 walks ranging from just ½ a mile to a more challenging 9 miles, including a night time walk to see bats and badgers or discover edible plants, nuts and fruits around Noss Mayo.

**Full details of these events, and many others, are in the  
Tourist Information Office in Modbury Court  
Open 10-5, Monday-Saturday**

**Come in and see what's going on around you!**

*Margaret Middleton*

## THE GREEN CORNER

It seems a long time ago now that the England football team returned from South Africa. But every cloud has a silver lining and from an environmental point of view the sudden disappearance of nearly all the white and red flags flying from car windows resulted in saving many tons of carbon emissions. It was estimated by experts that the wind resistance of each flag meant an increased fuel consumption amounting to a loss of about 5 miles per gallon. And on the same subject, how environmentally unfriendly are those recently installed speed bumps in a nearby village on the way to the A38? Every time you brake you waste energy, every time you accelerate you use energy, and the increased pollution isn't just from all the extra fuel being used. There's increased wear on brake pads, clutches, tyres and exhaust pipes that get damaged by the bumps; not to mention increased noise pollution from brakes, engines revving, drivers cursing and screams from patients in emergency ambulances. Let's hope we never get them in Modbury. Rant over!



It's good to see a few houses in Modbury taking advantage of the government's generous Feed-in Tariffs for generating electricity from photo-voltaic panels on the roof. The systems should pay for themselves over 7 to 10 years and will help to reduce our dependence on fossil fuels.

If you have a roof sloping in a southerly direction it could be worth researching the scheme. In Totnes the Civic Hall roof is having 75 solar photovoltaic panels installed which will earn an income to reduce its energy bills.

**For more information see [www.energysavingtrust.org.uk](http://www.energysavingtrust.org.uk) and [www.totnes.transitionnetwork.org](http://www.totnes.transitionnetwork.org)**

And a final footnote from The Energy Savings Trust: "If everyone boiled only the water they needed every time they used the kettle, we could save enough electricity in a year to power the UK's street lights for nearly seven months." Time for a coffee I think.

*Jeff Booth*



## Feasibility Study Modbury Town Square



The Parish Council received five tender applications for the Town Square Feasibility Study and upon the recommendation of an independent assessment panel have appointed the Halcrow Group, who are a consultancy group based in Exeter.

The study will take place over the next four months and through an on-going consultation process with the community starting in September, Halcrow will develop proposals for the scheme. A Public Exhibition will also be held in the early part of October to share ideas and options.

This is an exciting opportunity for Modbury to develop the idea of creating a welcoming and functional shared space that will benefit the community and the town for the future, and your ideas and comments will be an important contribution.

If you have any points that you would like to raise at this stage please write to us at the address below (to arrive no later than 14th September please).

**The Parish Council & Town Square Group can be contacted through the Parish Office:  
6 Modbury Court, Church Street, Modbury PL21 0QR or by email to [modburypc@tiscali.co.uk](mailto:modburypc@tiscali.co.uk)**

# SCHOOL REPORT

Just like that, the summer's over and we're back at school, shiny of face and shoe, wits and pencils sharpened for the term ahead.....

## LEVEL PLAYING FIELD

Earlier this year this column drew your attention to a petition that's been set up to try to ensure equality of funding for Devon schoolchildren. The deadline for this petition is next month, so I'm repeating the details in the hope that even more of you will sign up.

Modbury Primary is very used to life without a level playing field and generally manages perfectly well. But the inequalities of school funding are proving an uphill battle, even for our resourceful school.

Every pupil in Devon is being short changed by hundreds of pounds each year. The national average funding per pupil is £4,217 whereas Devon schools only receive £3,842. That is £375 less annually to fund their education. Our children are even further adrift from those on above average funding.

Costs for schools are similar across the country and staff pay is set nationally. If anything, running costs such as transport and fuel are higher in this area than elsewhere. At a time when the school is having to let good teachers go because of lack of funding, your support is more important than ever.

You don't have to be a parent or even connected to the school to have your say. Please sign the petition by going to: <http://petitions.number10.gov.uk/handsup4schools>. The deadline for signing the petition is October 10th. Adding your name just takes a couple of minutes and, who knows, may even make a difference.

## KEEP OFF THE GRASS

And while we're on the subject of playing fields, Mr Kirtley has pointed out how fed up he is with picking up all the dangerous shards of broken glass scattered around the school field.

Broken beer bottles are regularly found on the school premises and it doesn't take much imagination to work out the catastrophic damage they could inflict on unwary children.

With this in mind, anyone who sees people using the school as an al fresco bar should report them to the authorities, before someone gets hurt.

## FESTIVAL DEL FRESA

Spain may have la Tomatina which attracts globetrotting tourists to its wild and wonderful celebration of the tomato harvest, but Modbury has the Strawberry Fête.

Okay, so we weren't actually writing around in vats of overripe strawberries – though maybe that should be looked into for future events – but, nevertheless, this year's festival del fresa was bigger and better than ever.

Since the PTA's popular family fun day, usually held in September, has had to be cancelled this year, some of the fun activities the children love so much were included in this year's fête instead.

The fête started as usual with cream teas and stalls but carried on into the early evening with buskers, plate smashing, bouncy castle, go-karts and a sausage sizzle for supper. Everyone was welcome and it was good to see so many people from the town mingling with the usual suspects.

Thanks to all those who gave their time to help, and thanks to the Co-op for donating the strawberries. Despite the dodgy-looking weather, the afternoon was a great success and raised £700 for school funds.

## A PASSION FOR FASHION

The models were gorgeous, the music was loud and there was a satisfying scrum for the front-row seats. Oh, and the bar ran out of Pimms. So all, in all, this year's PTA fashion show was a fabulous success. Around sixty people packed into the Memorial Hall to see what was on offer and most

went home extremely satisfied with their bargains.

Thanks to everyone who supported the event, particularly the models, Ann, Rachel, Helen, Liz and Hilary. The bar and door staff also worked hard so many thanks to them. All in, the show raised a very glamorous £450 for the PTA.

*Ellen*



**BRIDGET THOMAS – MAR**

**Ingham Qualified Reflexologist**

**Mobile  
Reflexology**

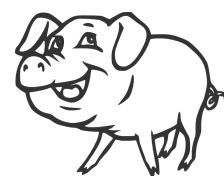
Treatments in your own home  
Fully insured

**Tel : 01548 831629  
Mobile : 07973 506083**



## THANK YOU

To everyone who supported Modbury Pre-school by toe-tapping, cake-eating, hog-munching and being so generous with their time and money..... a huge **thank you!**



The £ 1,015 we raised means pre-school staff can continue their fantastic work providing a fun, safe and stimulating environment for the children who go there.

# MODBURY FRUIT AND PRODUCE SHOW 2010



*John Ellis and John Burns*

The Modbury Fruit and Produce Show, which was held on Saturday 31st July, this year, was tinged with a little sadness, and a few tears, as it was the first time in nearly 60 years that Mr John Ellis had not taken part. In the past years he has been the biggest supporter of the show, with an average of forty or more entries annually, he won many cups and prizes over the years.

Now in his eighties, he decided it was time to hang up his gardening tools (for the time). Mr Ellis was presented with a gift by the show president Mr John Burns, and given a great cheer and round of applause by the people attending.

For many years Jeff Booth had tried to win the Reuben Mears Cup for most points in the cottagers classes that Mr Ellis had won for 37 years, but Mr Ellis always had more points. So with Mr Ellis not taking part this year I was hoping Jeff would have taken the trophy, but unfortunately Jeff you had 22 points and I had 28!

Jeff:	Vegetables 21 points	Flowers 1 point	= 22
Angela:	Vegetables 16 points	Flowers 12 points	= 28

Do you and I have a competition going on for next year, but who knows one of the new exhibitors might win the cup.

The show was a great success, the vegetable section was so full of exhibits it was hard to find room to place them all. With growing your own and the start up of the Modbury allotments this spring we had many new exhibitors, many of them winning prizes. It was great to see Tim Smith win quite a few prizes in the cottagers classes, if you could have seen his face when he saw his winning prize cards it was an expression of surprise and delight. The floral section was a blaze of colour and made the hall light up; a delight to see. The entries were down on some of the handicraft, cookery and children's over 11 yrs but the under 11yrs were up and again I must thank Beth for taking the time to enter the art club exhibits. Overall the exhibits were good .... according to the judges the quality and quantity were better than the Yealampton Show. The show was



well attended with the Memorial Hall full to the brim all the afternoon, I hope everyone had an enjoyable time. I would like to thank all those people who gave their exhibits for the auction, which raised £123 toward show funds. I would also like to thank the Vice Presidents for their monetary support and for some of the prizes; also the people who gave donations.

A special thank you to Beryl Masters for all her help in the kitchen, to Joan Burns for giving up her afternoon to help with the refreshments. Also a big thank you to Cicely Edwards who worked hard all morning being our runner, and to all those who helped on the day to clear the hall after the show, and thanks to the shopkeepers who displayed our schedules and posters six weeks before the show so people could take a schedule and have a think about what to do for exhibits.

The show President presented Mr Jolly with a cheque for £100 toward the Memorial Hall building fund.

Next year the show will be on Saturday 30<sup>th</sup> July and all being well we'll see you all again then.

I would like to welcome two new committee members - Pat Ringrose and Jason Edwards.

We will be holding a Christmas bingo sometime in November at the Modbury Club. Watch the Messenger and posters for the date to be announced. We hope to see you there.

## CUP WINNERS

BL Cup: Best in Show Open Fruit and Vegetable	Mr A Hext
Percy Rogers Cup: Best in Show Flowers	Mr A Hext
Meatherel Cup: Most Points: Dahlias	J Warnecke
Reuben Mears Cup: Most Points Cottagers	Mrs A Peters
Gladys Moysey Cup: Most Points Open	Mr W Perkins
Wilkinson Cup: Most Points Cookery	Mrs A Hickman
Axon Shield: Most Points over 60s	Mrs M Watts
Children's Prize: Best Exhibit Miniature Garden	M Hagger
Special Prize: Best Exhibit Floral Art	Mrs Cunningham
Treasurer's Cup: Most Points Handicraft	Mrs P Ryder
Joan Law Trophy: Most Points Floral Art	Mrs G Whitford
Ray How Trophy: Three Variety of Potatoes	Mr W Perkins
Cookery Prize: Best Exhibit	Miss V Ryder
Art Palette: Best Exhibit	Mr C Thomas
Boys Cup: Most Points	H Thomas
Girls Cup: Most Points	Cicely Edwards
Marjorie Cross Cup: Most Points under 11 years	Clem Edwards
Mable Williams Trophy: Over 60s Cookery	Mrs M Watts
William Baker Cup: Photography	Mr Hearnden
M & R Jackman Cup: Potted Fuchsia	Mr D Watts
Pete's News Cup: Pre-School	Felix Harris
William Jackman Cup: Roses	Mr R Jackman
	Mrs Hagger and Mrs Brown

Bill Spink Cup: Best Exhibit 5 Flowers	Mrs M Watts
Muriel How Cup: Best in Show Open Fruit & Vegetable	Mr W Perkins
R & N Mitchell Prize: Best in Show Open Flowers	Mr W Perkins

## SPECIAL PRIZES

R & H Pickles Prize: Pre School	Felix Harris
Mary Rose Rogers Prize: Best in Show Handicraft	Mrs M Watts
Mrs V Flatman Prize: Best Exhibit any other Vegetable	Mrs M Willis

*Show Secretary, Angela Peters*

# Welcome to the Totnes & South Hams Link of Chernobyl Children's Lifeline

Chernobyl Children's Lifeline - CCLL - was established in 1992 in response to the terrible nuclear accident at Chernobyl in the Ukraine, described by the United Nations as "the greatest environmental catastrophe in the history of humanity".

Belarus will suffer the effects of radiation fallout for hundreds of years. People who live there have no choice but to work on contaminated land, growing and eating contaminated food. Medical experts estimate that the problems are so severe that giving the children just a month away from their usual environment will allow a child's immune system to recover enough to give them, on average, an extra two years life expectancy.

Chernobyl Children's Lifeline believes that we should offer this opportunity to as many children as possible and works through a network of semi-independent 'links' throughout the UK doing just that.

The Totnes & South Hams Link operates in South Devon, a designated area of 'outstanding natural beauty' incorporating Kingsbridge, Modbury, Dartmouth, Totnes and bordering Dartmoor. We encourage the children to enjoy their surroundings whilst they are here and include many outdoor activities as part of their stay.

Thanks to CCLL, some 43,000 children from Belarus have visited Britain since 1992. The children always receive basic medical attention here including dental care and an eye examination. The charity pays for the travel costs. No-one in the CCLL links gets paid for their involvement - host families, doctors, dentists, opticians, fundraisers . . . everyone gives their time and energy for free.

CCLL has no particular religious or political affiliation - members come from all ages and stages of life and we hope to reflect this locally by evolving a diverse and egalitarian link.

## Can YOU Imagine

Living the rest of your life in a radioactive polluted environment. There is no escape. Money cannot buy protection.

Growing and eating food that may harm you and your family, but having no other option?

Coming to the UK, eating fresh food, breathing fresh air and going home with your immune system recharged.

Knowing there are people who **DO** care.

**We are currently organising for our Easter 2011 hosting**

## **HOW CAN YOU HELP US ACHIEVE THIS?**

Hosting a child (or, more likely, 2 children) usually 9 or 10 year olds for any period of their stay in Devon is a huge commitment. It costs you in time, money and emotional energy and takes over your life for as long as the children are with you. You are nervous before they come and you miss them when they leave to return to their families.

Still with us? OK, the good news is that it can also be one of the most incredibly satisfying and rewarding experiences you will ever have in your life, and this makes it worth all of the above and more!

You can host children for the whole month or for the first or second fortnight as long as we can match you up with another family. You could also choose to be a support family - on standby in case there is a problem at short notice for a host family, or just to give a host family a break or allow them to meet some commitment without their guest children.

There are many other ways in which you can help. For instance with fundraising, collecting good second hand clothes as the children often arrive with only one change, helping with the leaving party, spreading the word to everyone you know, donating 6 pairs of socks or pens and pencils for school, asking businesses for sponsorship.

Everyone over 16 in the household has to undergo a CRB (Criminal Records Bureau) check and the link Host Family Co-ordinator will come to your home to help you think through all the issues that might arise for your guests during their visit. There will be a bilingual leader with the group, and we will be constantly available and in touch to support hosts. The children are typically unsophisticated and delightful even though many live in an environment where poverty, alcoholism and depression are commonplace.

Anna, our last leader, wrote "Even if not all the children keep in touch with their hosts believe me they remember all you have done for them. Yes, due to their ages they cannot fully evaluate it, but it stays in their souls forever."

Please look at our website for more information [www.ccll.org.uk/totnes](http://www.ccll.org.uk/totnes) ... or call Sue Wyeth on 01548 821201, I am always happy to speak with individuals or groups. Why not host a coffee morning?

*Sue Wyeth*

## MARS 50 – 50 LOTTERY RESULTS

JUNE 2010

1 <sup>st</sup> : 025	Carol Sims	£27.50
2 <sup>nd</sup> : 078	Alan Strowger	£16.50
3 <sup>rd</sup> : 039	Jane Bullen	£11.00

JULY 2010

1 <sup>st</sup> : 066	Mrs Grainger	£27.50
2 <sup>nd</sup> : 111	Paul Romney	£16.50
3 <sup>rd</sup> : 068	Mark Lawrence	£11.00

To take part in the 50-50 Draw contact the Membership Secretary: Lynn Weeks - 830007



## MODBURY LOCAL HISTORY SOCIETY

Our first meeting this autumn will take place on **Wednesday 8<sup>th</sup> September** in the Library in Flete House, commencing at 7.30 pm. We are grateful to the Management at Flete for inviting us back for another series of talks.

The first one will be given by Colin Small and Hugh Stanley who are volunteers from the **National Coast Watch**. The history of this important organisation will be explained, also the Coast Watch Lookout Station at Prawle Point will be a main feature of the talk, which will be illustrated.

The next programme is now being finalised and will be distributed soon. The subscription is being held for the coming year at £7.00 but casual visitors will still be welcome at £2.00 per meeting. **Subscriptions will be due at this meeting** – Cash or cheque. We look forward to seeing you!

Please ring our Chairman Mary Timmis – 830768, or David Mitchell – 830446, if you require transport.

*David Mitchell*



## The Royal British Legion Modbury Branch

### ANNUAL GENERAL MEETING

The AGM will be held on **Monday 4<sup>th</sup> October** at 7.30 pm in the Modbury Club. Subscription is being held at £11.00 and is now due.

New members welcome – you do not have to be ex-service to join. For application forms please ring our Chairman Don Masters – 830545, or Secretary David Mitchell – 830446.

*David Mitchell*

## BAPTIST CHAPEL AS A MODBURY MARKET HALL?

There is a movement in Modbury to buy the Baptist Chapel for the community as a Market Hall. Would you be interested in using such a facility?

A Trust will buy the freehold and let it on a long lease to the people of Modbury through a Co-operative IPS (Industrial Provident Society). Individuals in the town would be asked to buy shares in the co-operative in many small holdings of £10, £20, £100 or more.

The Co-operative owned by the townspeople would run the Market Hall business under IPS legislation.

The Chapel would be let to Arts Societies, to individual artists, to organisers of produce sales of vegetables, fruit, cakes, preserves and cookies on a regular basis. Individuals would hire tables from the organisers. Producers would know it was the best place to sell, buyers from the town and surrounding villages would know it was the best place to buy. Other shops would benefit from more people coming in to Modbury on particular market days.

People always want to sell what they own or what they make. With a Market Hall there could be days for antiques and collectables, days for selling anything, and individuals can hire tables from the various organisers.

The Market Hall would be promoted widely via the Web, by flyers and posters and through the TICs and elsewhere.

If sufficient interest is shown a town meeting will be called to form the co-operative.

**For more details and to express interest please contact:  
Andrew Thomas on 01548 830664**



## INTER PUB DARTS

As the dark nights approach and our glorious summer fades into the dim and distant past it is time to get our dart players out of mothballs and 'throw for charity' over the winter months.

The Modbury Inn 'friendly' darts team, (practice nights, Mondays 8pm) is playing darts in aid of charity – and to support 'our local'.

Over the past two years we have raised in excess of £2,000 for 'local' charities including ShelterBox and Modbury Caring.

### Can we continue to excel this winter?

We are always seeking new players to join us – and remember these are friendly darts – so no pressure!!! We also have regular 'friendly' matches against other local pubs.

So come along Monday evenings, commencing at the end of September to The Modbury Inn and throw for fun – and charity.

*Mervyn Kettle  
The Modbury Inn Darts Gopher*

## Harvest at St George's

Harvest Festival will this year be celebrated on Sunday 19th September and the harvest gifts will, again, be donated to three local charities: the Salvation Army (Plymouth), the Shekinah Mission and Plymouth Women's Refuge.

Fresh produce, tinned and packet foods, or useful household products such as bin liners, washing-up liquid and soap will be very welcome. Please bring them (or flowers for decoration) to the church on the morning of Saturday 18th September. If you cannot do that you can leave them during the week at 7 Brownston Street. Thank you.



# MODBURY FAIR 2010 DISPERSAL OF FUNDS

If you would like to be considered for any monies from the Fair funds for your Charity, Club, etc now is the time to apply.

Please write a letter telling us what you would like the money for and how much it costs - and send it to:

Pauline Ryder  
68 Champernowne, Modbury  
Ivybridge PL21 0RE  
By 30<sup>th</sup> September

Any letters received after this date may not be accepted.

Please remember you may not get all the money requested; it all depends on how much we have collected and how many requests we get.

*Pauline Ryder, Fair Organiser*

## MODBURY SHORT MAT BOWLS CLUB

It is with great regret that I have to announce that Modbury Short Mat Bowls Club has had to close. This is due to a lack of members. This is a shame as it has been going for near 20 years.

I would like to thank all the members for their great performance in the league, for coming runners up for the last two years, which considering there were only ten members was really an achievement.

We will try and open again next Autumn. Once again thank you to you all.

*Pauline Ryder (Secretary)*

### MODBURY CARING

**Office Hours**  
**Monday 2 – 5 pm**  
**& Thursday 9 – 12 noon**  
**Telephone: 01548 830118**

## MODBURY EDUCATIONAL FOUNDATION



A small grant is available to students who are resident in Modbury and are starting either a course of Further / Higher Education or a Vocational Course this Autumn.

Applications – in writing – should be made by October 5<sup>th</sup> 2010 to:

*Rev Neil Barker  
The Vicarage  
Church Lane  
Modbury PL21 0QN*

## MODBURY SILVER THREADS September

The next friendly get-together at Modbury Social Club is on Tuesday 7<sup>th</sup> September.

Everyone is welcome to come along, play cards, a few games of bingo and a Quiz, or just to sit and chat. Meeting time 1.45 pm.

Anyone wishing to come on our next Coach Trip – this will be to Exeter on Tuesday 21<sup>st</sup> September, calling at Bovey Tracey en route. Cost £10 per person.

Leaving Modbury Post Office at 10.00 am then on to Champernowne and Brownston Street.

All welcome for a good shopping trip

Details from:

**Liz – 01548 830313 or  
Zena – 01548 830923**

## PERSONAL THANK YOU



I was very surprised to receive such an award from Modbury Fruit and Produce Show. I am extremely grateful.

A big thank you to everyone concerned and a special thanks to Mr J Burns, Mrs A Peters and Mrs T Jaynes.

I wish you good luck in the future years of the show.

Thanks again to everyone.

*John Ellis*



## MODBURY CARING 100 CLUB DRAW WINNERS

### April 2010

1 <sup>st</sup>	Pat Holness	£15
2 <sup>nd</sup>	Sue Prag	£10
3 <sup>rd</sup>	Tony Doughty	£5

### May 2010

1 <sup>st</sup>	Carolyn Hunt	£15
2 <sup>nd</sup>	Mark Gay	£10
3 <sup>rd</sup>	Jill Gubbins	£5

### June 2010

1 <sup>st</sup>	Janice Walton	£15
2 <sup>nd</sup>	Mary Rose Rogers	£10
3 <sup>rd</sup>	Carol Pink	£5

### July 2010

1 <sup>st</sup>	Steve Chapman	£15
2 <sup>nd</sup>	H Johnson	£10
3 <sup>rd</sup>	T Maltby	£5

**Winners are posted monthly  
at the doctors' surgery**

## SEAGULL PROOF REFUSE SACKS



Reusable seagull-proof refuse sacks have now been provided to all properties that are not suitable for wheeled bins. Bags of waste that are not contained in wheeled bins are vulnerable to being attacked by birds and animals, causing littering, so we now provide these sacks in an effort to keep the South Hams litter free.

One sack is permitted per household, please ensure that you mark the sack with your property name or number so that you can identify your sack after collection. If you have not been delivered a seagull-proof sack, or have lost it and do not have wheeled bins at your property, please contact us and we will deliver one to your property.

On collection day, you should tie the sack to a fixed point on the boundary of your property or provide a weight to secure the sack once it has been emptied.

If it is recycling collection day, please place your recycling sacks next to the seagull-proof sack, not inside it. As the recycling is clean, there should not be a problem with these sacks being attacked.

Please make sure that you do not leave your empty sack on the highway between collections, always store it within the boundary of your own property.

Your waste and recycling should be left at the boundary of your property by 7am on collection day, but no sooner than the evening before collection. These sacks are not available to properties that have been provided with wheeled bins.

SHDC - 01803 861234

## NATWEST MOBILE BANKING SERVICE

The NatWest Mobile Bank can be found in Poundwell Meadow Car Park each Friday

Please note a slight change in visit times as follows:

**10.30 am to 10.45 am**

Yes, it's **Modbury Pantomime** again!

We're planning to stage "Cinderella" on 6, 7 & 8 January 2011.

Please come to an

## Open Meeting

if you'd like to be in, or otherwise help the show.

**Memorial Hall**

**11:00 am on Saturday 11 September 2010**

Or, if you can't make the meeting, contact us by e-mail:

[Modburypantomime@f2s.com](mailto:Modburypantomime@f2s.com)

Or contact Nigel & Felicity Guild at 20 Church Street (Tel: 830786)

Noah's  ARK



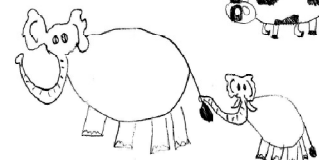
Songs, stories and play  
for under 5s - bring a grownup



Coffee, tea, chocolate, juice and healthy nibbles. Chat time too!

**Thursday September 2<sup>nd</sup>  
from 9.15 am**

**in St George's Church, Modbury  
car park in Church Lane**



For more information  
contact  
Emma Romney 831126 or  
Jo Woodcock 831128



## Shack's Calendar of Events



Vintage Week - 18<sup>th</sup> to 24<sup>th</sup> October 2010  
Reviving Oyster Shack favourites



3 Courses for only £12  
- 1<sup>st</sup> November to 24<sup>th</sup> December  
Ideal for your Christmas parties



**Fantastic Atmosphere serving Superb Fresh Seafood**



**The Oyster Shack is Open 7 days a week!**

Breakfast 9 – 10.30am Lunch 12 – 2.30pm Dinner 7 – 9pm

01548 810876 | [bigbury@oystershack.co.uk](mailto:bigbury@oystershack.co.uk) | [www.oystershack.co.uk](http://www.oystershack.co.uk)

## ROCKSHOP

Fridays 7.00 – 9.00 pm

**Modbury School Hall**  
**10p Entrance**

Younger Group Ages 8 - 11  
Older Group Year 7 Upwards

Hockey, Basketball  
Giant Skipping, Football  
Craft, Drama, Tuckshop  
and also for the older group: Community  
Activities, Occasional Discos  
and Live Bands  
A Christian Youth Group  
Established in Modbury  
For over 30 years

**EVERYONE WELCOME**  
Contact David – 831589  
or Simon - 830857

## BISTRO 35

Licensed Restaurant  
and Wine Bar

### SUMMER OPENING TIMES

**Tuesday to Saturday** Bar 6 pm – 11 pm  
Restaurant 6 pm – 9 pm

**Sunday** Bar 5 pm – 10.30 pm  
Restaurant 5 pm – 8 pm

### CLOSED ON MONDAY

The Bistro is available for small conferences,  
Luncheons, Weddings and Christenings  
Tuesday to Friday daytimes and Sunday Lunch  
Maximum of 40 people  
Rear Courtyard available

**MODBURY (01548) 831273**  
**35 CHURCH STREET MODBURY DEVON**

# Treasure Hunt

## Sunday September 5<sup>th</sup>

At  
2.30pm

Start from St George's Church

Enjoy a family walk around Modbury solving the clues. Something for everybody of all ages.

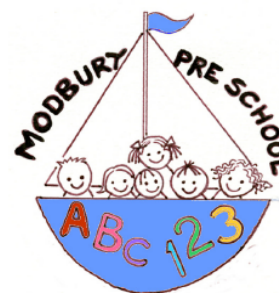
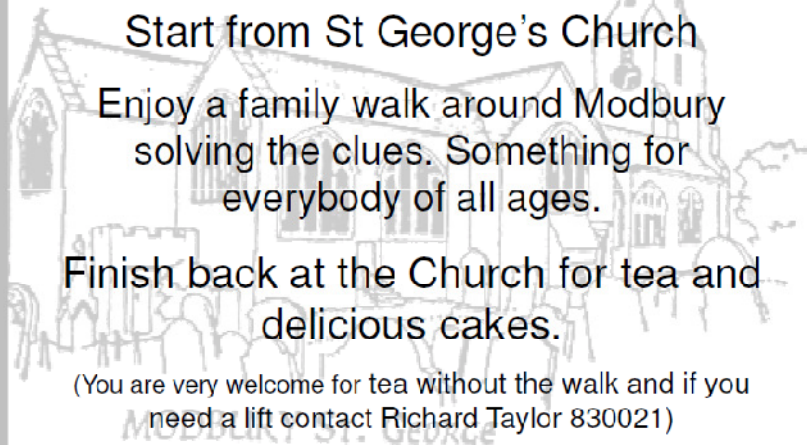
Finish back at the Church for tea and delicious cakes.

(You are very welcome for tea without the walk and if you need a lift contact Richard Taylor 830021)

Teas and stalls if wet, so do come! Produce Plants  
Crafts/Gifts Cakes

(Contributions and help with these would be greatly appreciated)

Adults £1.00    Under 12s 50p    Under 5 free



**FULL DAYCARE  
5 DAYS A WEEK**

Outstanding OFSTED Report  
Among top 3% of country!

Your 2½ - 5 year old can now  
attend preschool all day

**Toddler Group** Thursday  
1.15 - 3.45 pm, all welcome, with  
parent/adult

**2 year olds** are welcome  
Tuesday to Friday afternoons  
Please phone or drop by to enquire  
about sessions to suit your  
needs

**Modbury Preschool  
Back St, Modbury**

01548 831477

Registered Charity

No. 1039616

### **MODBURY BADMINTON CLUB**

Memorial Hall  
Tuesdays 7.30 – 10 pm

*New members always welcome. For  
further information please contact:*

*Gill Jolly  
Tel: 01548 831263*



### MODBURY TIDDLERS

A Community Run Group for Small People aged  
0 - 5 (and for the people who wipe their noses!)

**PLAYTIME FOR THEM!  
COFFEE AND A CHAT FOR US!**



Fridays 9.30 - 12 noon    £1.50 per child

@Modbury Memorial Hall

Enquiries ring Angie: 01548 831139

## Knitting Workshops

### Continental Knitting

Tuesday 5th October, 10am- 4pm

### Professional Finishing Techniques

Tuesday 2nd November, 10am- 4pm

### Basic Sock Knitting

Tuesday 23rd November, 10am- 4pm

Cost for each workshop is £40 including lunch and refreshments. *Book your place quickly to avoid disappointment.*

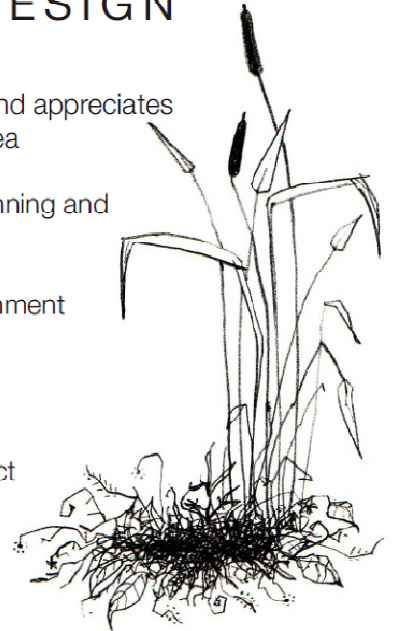
Call on **01548 831911** or visit the showroom  
Hulu, Sentinel House, Poundwell, Modbury, PL21 0XX



[www.hulucrafts.co.uk](http://www.hulucrafts.co.uk)

## ARCHITECTURAL DESIGN

- Modbury based designer who considers and appreciates the character and distinctiveness of the area
- Drawings produced and submitted for Planning and Building Regulation approval
- Domestic new build, conversions, refurbishment and extension projects
- Affordable and competitive fees
- Contact Jon Sullivan to discuss your project and requirements further



**NEST DESIGN**

[jonleighsullivan@gmail.com](mailto:jonleighsullivan@gmail.com) 07813 127617



Form and Function  
Working in Harmony

A down to earth approach with a truly bespoke solution  
Beautiful kitchens fitted with a reputation you can trust

Call or email us to discover the potential of your kitchen

t. **01548 830 819** f. **01548 831 519**  
27 Church Street □ Modbury □ Devon □ PL21 0QR

[info@kitchensbydezine.co.uk](mailto:info@kitchensbydezine.co.uk)  
[www.kitchensbydezine.co.uk](http://www.kitchensbydezine.co.uk)



## SOUTH HAMS MOBILE LIBRARY

The Mobile Library will be at the following  
locations on **FRIDAY** mornings

Aylestone Park (arr 0930 - dep 0955)

Cromwell Park (arr 1000 - dep 1015)

The Green (arr 1020 - dep 1035)

Also on **MONDAY** afternoons  
(excluding Bank Holidays) at **Poundwell**  
(arr 1600 - dep 1630)

## MOBILE LIBRARY SERVICE

After a review of the Mobile Library Service, Devon County Council propose to amend their service in Modbury from January 2011

The changes are as follows:

The Green – 15 minutes weekly

Aylestone Park – 45 minutes weekly

Cromwell Park – 15 minutes weekly

Poundwell Square – 1 hour weekly

Poundwell Square (new Saturday stop) – 3 hours weekly

Please contact Modbury Parish Council Parish Clerk (01548 830222) by 10 September if you have any comments on these proposals



**MARTIN LEY**  
PLUMBING & HEATING

- Oil Installations, Servicing & Repairs
- Unvented Cylinders
- Bathrooms & Showers
- General Plumbing

Tel: Modbury 01548 830609  
Mobile: 07811 934551

**THE GARDEN PROJECT COMPANY**

PROFESSIONAL LANDSCAPE CONSTRUCTION

Brick, Wood & Stonework  
Decking, Fencing & Turfing  
Patios, Pergolas & Ponds  
Garden Buildings  
Planting & Maintenance  
Groundworks

01548 852436  
07967 746361

[www.gardenprojectcompany.co.uk](http://www.gardenprojectcompany.co.uk)  
Established 17 years



**Sue Craig**

*Painting and decorating with a woman's touch*

- Reliable and hardworking
- Efficient, clean and tidy
- Fully insured

Offering natural paints as an environmentally-friendly and sustainable option.

T: 01548 560098  
M: 07970 527049  
E: [susan.craig326@btinternet.com](mailto:susan.craig326@btinternet.com)



**Wild Goose**

34 Church Street,  
Modbury, PL21 0QR

01548 830715

Stockists of Rowan & Colinette wool/patterns

English Blue & White China

Various Range of jewellery

Fashion Accessories

Pine Furniture



**NIGEL FROST OPTOMETRIST**  
3 Chene Court  
Modbury  
Devon  
Tel: 01548 830944

**'Look no further'**

NHS/Private Eye Examinations  
Everything from designer sunglasses to low cost lens and frame packages  
Contact Lens Specialists

Nigel Frost BSc(Hons) F.C.Optom  
Kathryn Poole BSc(Hons)M.C.Optom

<b>KINGSBRIDGE EYE CARE</b> No 1, The Promenade Kingsbridge Tel: 01548 856854	<b>SALCOMBE EYE CARE</b> 84 Fore Street, Salcombe Tel: 01548 843207
--	--

**ANTIQUE FURNITURE REPAIRS & RESTORATION**

Veneer Repairs, French Polishing  
Hand stripping & Re-finishing  
Wood-turning

**CANEWORK & RUSH SEATING**  
Danish Cord & Seagrass



**Guye Roberts**  
**MASTHEAD**  
Parsonage Road  
Newton Ferrers  
Plymouth  
DEVON PL8 1AS

01752 872805

Website: [www.guye.co.uk](http://www.guye.co.uk)  
Email: [guye@guye.co.uk](mailto:guye@guye.co.uk)

**Mrs C V Harrington MCSP; MMACP**

Chartered Physiotherapist

Registered with the Health Professional Council  
And all Health Insurance Companies

**DOMICILIARY SERVICE / HOME VISITS**

Tel: 01548 810023  
Mobile: 07776393927



Member of the Organisation of Chartered Physiotherapists in Private Practice



**TALL ORDERS**

Landscaping & grounds maintenance

~lawn mowing ~hedge trimming  
~brushcutting ~clearance.....

**HARD LANDSCAPING**  
~fencing ~decking ~patios  
~natural stone walling

**CHAINSAW & TREE WORK UNDERTAKEN**

Chipper & Mini-digger available  
logs supplied

For a friendly free quote call James Tall on 01548 831139 or mobile 07967258318 (fully insured)

**Accountancy Services**

- Accounts
- Tax Returns
- Start-ups and Business Plans
- Bookkeeping, Payroll & VAT
- Fixed fees in advance
- Self-Assessment and CIS

Contact Alex Smith (ACA) on

01752 551 888

To arrange a free initial, no obligation meeting



## Advertising Tariff for The Messenger

In order to support the publication of The Messenger, advertising relating to business or of a commercial nature will be charged at the rates shown below.

Information for community use will continue to be published free of charge.

### Single Insertion

1/9 <sup>th</sup> page	£10.55 per insertion
2/9 <sup>th</sup> page	£23.10 per insertion
1/3 <sup>rd</sup> page	£34.65 per insertion
1/2 page	£46.20 per insertion

### Three Insertions

1/9 <sup>th</sup> page	£9.25 per insertion
2/9 <sup>th</sup> page	£18.50 per insertion
1/3 <sup>rd</sup> page	£27.75 per insertion
1/2 page	£37.00 per insertion

### Six Insertions

1/9 <sup>th</sup> page	£7.00 per insertion
2/9 <sup>th</sup> page	£13.90 per insertion
1/3 <sup>rd</sup> page	£20.80 per insertion
1/2 page	£28.30 per insertion

### Eleven Insertions

1/9 <sup>th</sup> page	£4.65 per insertion
2/9 <sup>th</sup> page	£9.25 per insertion
1/3 <sup>rd</sup> page	£13.90 per insertion
1/2 page	£16.50 per insertion

Artwork of good black and white copy to be supplied. **Payment must be made in advance.**

Cheques should be made payable to 'Modbury Parish Council' and sent to The Parish Office, 6 Modbury Court, Church Street Modbury PL21 0QR.

**For further information please contact David Hansford on 01548 830222**

## MODBURY PARISH COUNCIL PARISH OFFICE

6 Modbury Court, Church Street  
Modbury  
Tel: 01548 830222  
e-mail [modburypc@tiscali.co.uk](mailto:modburypc@tiscali.co.uk)

**Hours of Business-**  
Mondays 9.00am – 1.00pm

**Parish Surgery**  
10 – 11 am every Saturday

### Planning Applications

Notices of planning applications lodged with SHDC are displayed on the Parish Noticeboard outside the Post Office. Copies of plans relating to these applications can be inspected at the Parish Office during above office hours or when a Councillor is on duty.

### Contacting Parish Councillors

Parish Councillors attend the Parish Office, on a rota basis, on Saturday mornings from 10.00 - 11.00am. Should you have any parish matter you would like to discuss come along to the Office at 6 Modbury Court. You can also call in to the Office on Mondays from 9.00am - 1.00pm and speak to the Clerk, David Hansford.

He can also be contacted by phone on 01548 830222 or e-mail at [modburypc@tiscali.co.uk](mailto:modburypc@tiscali.co.uk)

At all other times you can leave a message either by phone or e-mail (see above) or alternatively you can write a letter or speak at the public forum held at the beginning of each monthly meeting of the Parish Council, held on the second Monday of each month at 7.00pm in the annexe of the Memorial Hall.

## MESSENGER CLOSING DATE

*The closing date for the  
October Messenger is  
16<sup>th</sup> September 2010*

Please send all copy, by e-mail to [prestons@onetel.com](mailto:prestons@onetel.com) or deliver to the **Parish Office** (please note that all advertisements should be submitted **ONLY** via the Parish office – see below).

**Payment for all advertisements must be made in advance. Cheques should be made payable to 'Modbury Parish Council' and sent to The Parish Office, 6 Modbury Court, Church Street, Modbury PL21 0QR.**

**For further information please contact David Hansford on 01548 830222 (Monday mornings – or leave a message).**

The Modbury Messenger is published by The Modbury Parish Council and is printed by SHDC, Follaton House, Totnes.

*The views expressed in the Modbury Messenger do not necessarily represent those of The Modbury Parish Council.*

## SOUTH HAMS DISTRICT COUNCILLORS

Our South Hams District  
Councillors are:

**Geoffrey Fielden – 830916**

or

[councillorfielden@  
southhams.gov.uk](mailto:councillorfielden@southhams.gov.uk)

**Mark Lawrence – 830423**

or

[Cllr.Lawrence@southhams.gov.uk](mailto:Cllr.Lawrence@southhams.gov.uk)

Our representative on  
DEVON COUNTY COUNCIL  
is William Mumford and he  
can be contacted on:

**01752 873002 or**

[william.mumford@devon.gov.uk](mailto:william.mumford@devon.gov.uk)

## PERSONAL ANNOUNCEMENTS

(Births, Deaths, Marriages, Thanks etc)

£5 per insertion - maximum 50 words

(Subject to available space)

The Editorial Committee reserve the right to précis/abbreviate any copy submitted for inclusion in the Messenger.

# **BARN DANCE!**

**1<sup>ST</sup> MODBURY SCOUTS &  
CUBS WELCOME YOU TO A  
FANTASTIC EVENING IN  
THE MEMORIAL HALL**

**ON  
16<sup>TH</sup> OCTOBER  
AT  
7.30PM**



**MUSIC BY  
HOGWASH!**

**BAR**

**TICKETS: £6 ADULTS    £4 CHILDREN**

**AVAILABLE FROM: PICKLES  
01548 830412**