

# MODBURY MESSENGER

## BEST KEPT VILLAGE COMPETITION



*Here are some quotes from the judges' report, which is much better than last year.*

"The first impression you get when walking along Church Street is what a thriving and interesting village. So many and varied shops, inns and coffee shops. Everyone is so friendly and eager to render help; from staff in the TIC, the ladies cleaning the church and at the Primary School.

For such a busy place with the A379 running straight through the middle there was a remarkable absence of litter - there was the odd spot in one of

the car parks but generally very good.

There are however a couple of areas that need attention which would bring the village up to another level. The seat at the junction of Barracks Road and Dark Lane needs a repair and treating. Several sections of the fencing around the children's play area beside the Memorial Hall need repair especially as there is a steep bank on the outside of the fence.

The tennis courts and playing field are in good condition but unfortunately the pavilion is not. It had been left open and is very basic and needs a good clean as does the surrounding area adjacent to the pavilion. There was rubbish piled up outside, broken glass and the bin overflowing; just a shame - it spoilt this area.

The Parish notice board, on the wall of the Post Office was excellent, clean and up to date, which unfortunately you cannot say about the Chamber of Commerce board, not far away, posters out of date and needs some TLC.



St George's Churchyard was neat and tidy, notice boards in the porch full of information. Once inside you see what a thriving community it is as there are information boards about Going Green.

One general comment - we didn't feel the map sent was very helpful - we obtained the Modbury 2007 booklet from the TIC it would be worth including this up to date booklet in future entries into the competition."

*A much better report than last year and we scored 87 marks. Most of the criticisms will have been sorted before next year, or be in hand, so well done everybody - it was clearly worth the effort that you all put in and the town has looked good all summer. Many thanks on behalf of the Modbury Society and I am sure the Parish Council too.*

*Nicky Shepley*

# AROUND THE CHURCHES



## St Monica's Roman Catholic Church

St Austin's Priory  
01752 892606  
Sundays  
9.00 am Mass  
*Everyone Welcome*

---

---

## Modbury Methodist Church

### Superintendent Minister

Rev John Beadle  
(Tel 01548 852073)

### Ministers

Rev Gordon Davis  
(Tel 01803 862350)

Rev Margaret Johnson  
(Tel 01548 531455)

### Sunday Services

10.30 am in  
St Monica's Church

This is a small friendly group  
Do come and join us

### October Services

7<sup>th</sup> – Mr Paul Metcalfe

14<sup>th</sup> – Rev John Beadle  
(Holy Communion)

21<sup>st</sup> – Mrs S Sargeant

28<sup>th</sup> – Rev Margaret Johnson

---

---

## Dear Friends

How are you celebrating harvest? This year we have come to see that the assumption that we have everything under our control is an illusion. Many people had their worlds turned upside down by simply too much rain; others find their lives upset by illness or loss, and all of us are starting to realise that our whole planet is suffering because our greed and exploitation are out of control.

But what can you do? Shrug your shoulders? Hide your head in the sand? Ignore it and hope it will go away, or you'll wake up and realize it was all just a nightmare? Or take the radical step of Christian faith and turn to God; admit that you are not in control and start to live a decentralised life honouring our creator and redeemer.

Here are some things you can do:

- Visit St. George's Church and try out "Earth Connect" a multisensory, interactive and reflective trail looking through creation towards God the creator.
- On 3<sup>rd</sup> October 7.30pm in St. George's Church there will be a free showing of the Al Gore film – "An Inconvenient Truth" which highlights the global warming situation.
- On Sunday 7<sup>th</sup> October at 10.30am we will be celebrating Harvest at St. George's Church. All the local farmers and allied agricultural workers are being invited; come and support them.

The Apostle Paul wrote:

**"I planted the seed, Apollos watered it, but God made it grow."**

He was talking about spiritual growth. Parents get worried if their children don't grow and

sometimes this is described as "failure to thrive". The church is here to help children to thrive spiritually, so why not bring your children (your own harvest), to church, after all:

*"All good gifts around us are sent from heaven above."*

*Then thank the Lord, O thank the Lord for all his love."*



"Sunday Club" at St. George's Church is for primary school aged children and meets on 2<sup>nd</sup> and 3<sup>rd</sup> Sundays of the month. We are here for 'learning, thinking and asking questions about God' with games, activities, music and crafts. Leaders are happy to collect children from parents in the Church porch at 10.25am, if they are not attending the service.

*This month  
October 14<sup>th</sup> & 21<sup>st</sup> at 10.30am*

### St. George's Children's area

The benches arranged near the font provide an area for parents to take young children and stay with them where they can move around a bit more during services. We are building up resources for them.



Neil Barker



# Angela's Garden Corner

## Your Garden in October

October really marks the end of the gardening season and is a time for cleaning up, replanting and preparing the garden for winter

### Lawns

Clean your mower, service it, and put it away towards the end of the month.

### Borders

Tidy the borders, cutting back any long straggly growth caused by the rain this summer. Weed the area and cover bare soil with a mulch.

Plant trees, large shrubs and move or replant any hardy border plants. Slightly tender shrubs like hebe, lavender, santolina or cistus are better planted in the Spring.

Lift any tender plants you want to



keep and pot them up for the greenhouse or conservatory.

If you have no suitable area for overwintering you can leave them out and protect them with horticultural fleece when frost threatens. Finish bulb planting.

### Patios and Pools

Sweep the patio or decking and put away plastic and wicker furniture. Cover metal or hardwood furniture with tarpaulins or plastic covers.

### Fruit and Vegetables

Tidy the vegetable garden and lightly dig over vacant soil, adding a mulch of compost or manure.

If you are starting a new vegetable bed, dig the soil now and leave it rough. The frost will break it down and birds can get into the soil and eat pests like leatherjackets.

It will be far easier to work next Spring.

In the established garden there will still be leeks, parsnips, cabbages and other winter crops. As the weather gets wetter, try not to tread on the soil but work from the path.

Greaseband your apple trees now and check the cane fruits are secure.

### Six Great Plants for Conservatories

More and more people have glassed areas; glazed porches, conservatories and roof lights, etc. These six plants are all reliable.

#### Plumbago capensis

Powder blue flowers. Easy and dependable.

#### Strelizia

The Bird of Paradise plant. You may have to wait a few years but it will be worth it.

#### Passiflora "Incense"



Dark purple flowers like the common Passion

Flower but much larger.

#### Stephanotis

Looks a bit like a jasmine with strongly-scented blooms. Train it up a support.

#### Pelargonium

"Lady Plymouth". This is a scented leaved geranium smelling of lemon verbena.

#### Jasminum stephanense

Bigger and more scented than the common jasmine but otherwise similar.

## ANGELA HANGS UP HER GARDENING GLOVES



After five years of producing an excellent Gardening column Angela has decided to call it a day. She has been producing this column since October 2002 and I am sure we have all benefited from her expert knowledge.

Many thanks Angela and have a happy 'retirement'

Can you fill the gap that Angela has left? You might be interested in starting a new column.

Please contact [prestons@onetel.com](mailto:prestons@onetel.com) if you think you have a good idea

## MODBURY SILVER THREADS

Tuesday 9<sup>th</sup>  
Meeting in Club 1.45 pm

Tuesday 23<sup>rd</sup>  
Trip to Barnstaple  
£11 – 10.00 am

### SILVER THREADS HOLIDAY 2008

5 days – on 14 April – from Modbury to Weymouth  
Price £208 per person inc £14 insurance

Deposit required: £54  
Please telephone:

Tel: 01548 830861

## PLANNING DECISIONS

**Modbury Parish Council recommended approval and SHDC granted permission for:**

**Kingsland, Brownston**

Conversion and extension of garage to create dwelling.

**Higher Eastleigh Farm**

Retrospective application for erection of timber framed conservatory.

**Deer House, 22 Church Street**

Consent for alterations to property and outbuilding.

**Hill House, 3 The Orchard**

Single storey extension to rear.

**Widland Farm**

Erection of conservatory.

**Anniversary House**

Work on trees in a conservation area.

**SHDC Advised:**

**California Farm**

An appeal to the Secretary of State re retrospective planning application has been made.

**Modbury Parish Council made the following recommendations:**

**15 Church Street**

Listed Building Consent for replacement of front door – recommended as submitted.

**Resubmission of Application 35/0561/07/LB**

Listed Building Consent for conversion of disused water tank to swimming pool – recommended as submitted.

**Field south west of Priory Farm at SX646514**

Resubmission of application 35/1985/06/F erection of agricultural machinery store -

recommended subject to agricultural conditions and SHDC policy.

**14 Church Street**

Formation of room in roof space with dormer leading to roof terrace - recommended refusal.

**Field at SX670496 Kenedon Farm.**

Outline permission to erect agricultural building - recommended refusal.

**Half Acre, Dark Lane**

Retrospective application for amendment to application 35/0468/07/F – recommended refusal.

**Undermeadows, Back Street**

Alteration to existing approval 35/1548/03/F – recommended as submitted.

## POLICE SURGERIES

PCSO Stacy Thorn's Police Surgery has been well received. Surgeries are held on the first Monday of the month with new hours of 5.00 pm – 8.00 pm. The next Surgery will be Monday 1<sup>st</sup> October 2007 at the Parish Office, 6 Modbury Court, Church Street.

If you have any concerns over neighbourhood issues Stacy will be happy to discuss them with you in confidence.

## DOG FOULING

Unfortunately we are still plagued by dog fouling and irresponsible dog owners who do not clear up the mess left by their dogs. The problem has been particularly bad at Palm Cross Green and along

the footpath to Swanbridge Mill. This is offensive to the public at large, a potential danger due to the risk of infection and is in itself **illegal**. **PLEASE CONTROL YOUR DOG AND CLEAR UP AFTER IT.**

## RECYCLING AND RUBBISH

### Do you need help with your bins?

If you have great difficulty or are unable to move your waste/recycling bins and sacks to the boundary of your property because of infirmity or a disability, you may be eligible for help. You can ask for an 'Assisted Collection'.

For more information contact Customer Services at SHDC on 01803 861234.

## KITCHEN CADDY AND BROWN WHEELED BIN LINERS

For some time SHDC have been selling liners for the kitchen caddies. A roll of 50 liners costs £3.50 including postage, or it can be collected from Follaton House for £3.00.

Now SHDC is offering liners for the Brown Wheelie Bins. A roll of five liners costs £3.75 including postage, or £3.25 if collected from Follaton House.

Both types of liner are made of corn starch and are fully compostable. To order phone 01803 861199.

### Please note:

It is not essential to use these liners; if you choose you can wrap your food waste in paper or cardboard, or compost it at home.

# SCHOOL REPORT

**Autumn term is well underway. Teachers and pupils settled into their new routines as the pace of learning and teaching builds. The Vikings are beginning to invade the school as Noggin the Nog spreads his stories throughout the classrooms about the men of the North and how they influenced the life in ancient Britain!**

Last month's School Report published recent performance results from the school; the feedback has been terrific as everyone is justly proud of what is being achieved. All schools without exception strive for performance and all set out to succeed on behalf of their students; it's just that some schools do it better than others and some become *Second to None!* Every school sets out their standards and codes for learning and behaving and it's those schools who live and breathe these codes, from the Head of School, through the staff, down to the newest pupil who truly succeed. Modbury strives to get it right and is proving that it is one of those succeeding!

## OPEN ALL HOURS

School term started with the announcement of 'out of school hours' activities, all of which provide opportunities to extend the enjoyment and learning experience built into the structured day. This term sees a new addition to our 'Clubs' that should bring delight to all you busy mums and dads. It's the 'Cookery Club', courtesy of Mrs Dixon - who assures me that by the end of the term you can leave the weekend cooking to the kids!

The other Clubs are: Recorder and Choir clubs for the musically inclined, Art and Drama for our creative souls, Bookworm for our

literary fans and Netball, Hockey and Football for those seeking outdoor pursuits. Many thanks go to all who give their time for these much appreciated activities.

## PLAYING AWAY

There are a number of opportunities this term for our students to play away, learning things in different surroundings.

On September 26<sup>th</sup> Year 6 took part in a Euro Day of Languages at Ivybridge Community College. Activities introducing French, German and Spanish were presented to our students which also included lunch themed to the various countries of these languages. On the same day, Year 5 also attended Ivybridge School for a Science day. This was a proactive day spent in the laboratory of the school. No doubt some returned with the skills of Harry Potter!

Having experimented with Year 5, Year 6 will be attending a similar day later this month .....hubble bubble toil and trouble!

**Poetry skills were highlighted in the September Messenger with a report on the skills of last year's Year 4 class who all had their poetry published. Building on this, Years 5 and 6 will be attending an event at Buckfast Abbey. The event is entitled 'Poems From The Poet', where they will be invited to 'Play with Words' with performance poet Carol Rumble, a specialist in writing and performing for children.**

## BACK TO SCHOOL STANDARDS.....

Below is an extract from literature produced by Modbury School South Australia .....same name, 12,000 miles away - and values close to our heart!

## 'Modbury School's Values'

The school has developed a comprehensive set of value statements that underpin the vision for the school. The values that support this vision emphasise primary pathways for improvement in the area for Learning/For individual responsibility and for working together as part of a team and community.

The values themselves are divided into Foundation Values, Focus Values and our Aspiration Values.

**Our Foundation:** As members of this school community we all take responsibility to ensure we have a safe and secure environment. We value each other and treat each other in an honest and caring way. We create an environment that stimulates wonder and enhances learning for all.

**Our Focus:** With our foundation in place, we are building a school that encourages confidence, inquiry and independent learning through creativity, teamwork and communication. In all this we encourage a sense of fun and play. We have the ability to learn from our experience and mistakes to provide quality education.

**Our Aspiration:** Ultimately, we believe in being humanitarian as we strive together within the wider community to develop knowledge and wisdom in a democratic and holistic way.'

If we, as individuals, families or communities wrote out our own set of positive values and dared to live by them, think how different the world would be.



*Chris*



## The Royal British Legion Modbury Branch



Our next meeting will take place on Monday 1st October 2007 and will be The Annual General Meeting. Contact Bill Sloman, Chairman, 830425, if you require details. New members welcome, you do not have to be ex-service.

Membership Cards for the year ending 30 September 2008 have been received from HQ and will shortly be distributed. Annual subscription is now £11.00 and members are requested to attend the October AGM to collect their cards.

The next fund raising event will be a **Cake Stall on Saturday 13 October, 10 am to 12 noon** outside the Bistro, by kind permission of Annabel and Barry. Cake makers please note. Beryl will be in touch!

Coffee morning 15 September – many thanks to all who helped us to raise £50 at this event and special thanks to Tracey and staff at The White Hart for their co-operation.

**All cash raised goes to the Poppy Appeal.**

*David Mitchell*

### MODBURY LOCAL HISTORY SOCIETY

Our first meeting of the new season of talks was very well attended and Bill Scarratt gave a graphic account of the life of William King. Born at Wonwell in 1816 he spent his life at sea and rose to be a Master Mariner and was in charge of several schooners and barques, visiting many ports throughout the world transporting all sorts of cargoes, including fruit.

Bill has painstakingly researched the records of the various ships and has recorded many facts relating to seafaring in the 1800s.

William King's sons followed in their father's footsteps and also became expert sailors. William eventually took command of a steamship at the time when steam was replacing sail. He survived a number of shipwrecks, and died in 1883 at Salcombe. Bill's talk was enhanced by wonderful digital reproductions of actual documents, including ships' logs.

Bill was warmly thanked by Chairman Mary Timmis who said that we had all been spellbound by all the facts which he had discovered.

Next month we are looking forward to a talk by Simon Garner, Area Warden for the National Trust. His subject, 'HMS Cambridge' is the old gunnery school at Wembury Point and this really is 'history in the making' because the buildings have been demolished and the whole area is being returned to nature.

It will be interesting to see how much progress has been made with this project. Some of us joined the Modbury Society for a walk on the site a few months ago and Simon was asked at that time if he could give us a talk.

Members of the Modbury Society will be joining us at this meeting, which will be on **Wednesday 10th October, commencing at 7.30 pm in The White Hart Assembly Room**, by kind permission of the Management.

Annual subscription £5.00, casual visitors welcome at £2.00 per meeting.

*David Mitchell*

## MODBURY HERITAGE WEBSITE

The History Society has received many enquiries by e-mail; most of them are concerned with family histories, quite a few are from Australia.

But recently we had an enquiry of a different nature – an Englishman living in the USA has told us that he is the proud possessor of a grandfather clock which is inscribed with the name of 'William Paddon, Modbury'. His mother purchased it from a saleroom in Southport, Lancashire, several years ago. He was keen to find out if we had any information about William Paddon or his family and if we had any ideas when the clock might have been made.

We were able to find out from Whites Directory, 1850, that William Paddon lived in Church Street and that most likely the clock was made in the late 1830s or 1840s. His father was also a clockmaker, by the name of George, and he lived in Kingsbridge.

I have a book – 'Devonshire Clockmakers' by J K Bellchambers, in which these clockmakers are described as 'assemblers of clocks' – they built the wooden cases and installed the works into them.

Our enquirer, Mr Ray Banks, has sent me some photographs of his clock, which is quite ornate with a white dial, black figures and hands, with a beautiful painted surround in colour – a country scene.

Mr Banks comes home every two or three years and hopes to visit this area next time. If any readers have any information about our clockmaker please let me know and I will pass it on.

*David Mitchell*

**REGISTER OF ELECTORS 2008  
QUALIFYING DATE 15 OCTOBER 2007  
DID YOU KNOW?**

- ❖ The Register of Electors is compiled each year with a qualifying date of 15 October.
- ❖ Information is required by law from each household annually – forms will be sent out at the beginning of September. If you don't receive one, contact South Hams District Council Electoral Registration Office (01803) 861434.
- ❖ Electors whose details are printed correctly on the form may register using the automated freephone number (if the telephone you are using has touch-tone dialling), or via the internet – using the security numbers printed on the form.
- ❖ Persons who do not register may be liable for a fine of up to £1000.
- ❖ Only those persons whose names appear on the Register will be entitled to vote.
- ❖ You have some choice about who can buy your details. The Electoral Registration Officer must publish two registers: the full version and an edited version. IF YOU PLACE A CROSS in the box on the registration form for exclusion from the edited register, your name and address will only appear on the full register which will only be used for certain lawful purposes, such as elections, law enforcement and checking applications for credit. IF YOU DO NOT PLACE A CROSS in the box on the registration form your name will also appear on the edited version of the register which anyone can buy – this means anyone can use your details for any purpose.
- ❖ If you are unable to vote in person at elections you may apply to vote by post or proxy. Just place a cross in the appropriate column on the form. If you already have a postal or proxy vote the form will indicate this.
- ❖ The qualifying date is 15 October but any forms received before the middle of November will be processed before publication of the Register of Electors on 1 December.
- ❖ To avoid a reminder being sent you must register by 7 October 2007.

**SELL AND BUY  
YOUR UNWANTED CLOTHES AND  
RAISE MONEY FOR YOURSELF AND  
FOR LOCAL CHARITIES**



*Sale to be held on  
Saturday 2nd November  
from 2.00 pm  
in the*

*Assembly Room of the White Hart*

Bring your good quality clothes - freshly  
laundered - between 9.30 am and 1.00 pm

**Ready for the  
mega-sale at 2.00 pm.**

(Please supply hangers –  
there will be clothes rails and tables)

To sell your items you will need to contact either  
Anne or Sarah to be given a number.

You will then label your items with your number  
and the cost you wish the item to be sold for

You will receive 75% of the value sold , 25% will  
go towards St Luke's Hospice  
and Modbury Health Centre.

If you wish to keep any unsold items, these must  
be collected from the White Hart before 6.00  
pm or they will be taken to local charity shops or  
clothing banks.

**For further details call  
Sarah on 830458 or Anne on 830597**

**FLU AND YOU !!**

- **Are you over 65?**
- **Do you have a respiratory disease?**
- **Heart disease or Liver disease?**
- **Do you have Diabetes or a weak immune system?**

Modbury Health Centre's  
Flu Vaccination Day

is

**SATURDAY 20<sup>th</sup>  
OCTOBER 2007**

**8.30 - 3pm**

# MODBURY ASSOCIATION OF RECREATION AND SPORTS (MARS) - APPEAL UPDATE

## BIG LOTTERY APPLICATION - SO FAR SO GOOD!

We had hoped to hear in September if we have clearance to go to Stage 2. However we have been advised by the Lottery Office that due to the number of applications being processed it is more likely to be by the end of the year. Still, the good news is that we remain in the frame as one of approximately 500 applications successfully passing through the telephone interview stage out of some 1,600 applications in total.

### > FUNDRAISING

Our total fund now stands at £20,045. This includes individual personal donations of £670 – **Thank you very much to each and every one of you who has sent in a donation**, and £375 of pledged labour and goods – **again thank you very much**. In the November Messenger we will be able to confirm significant further pledges which are in the pipeline.

### > HOW YOU CAN HELP

If you would like to help then use the form below to donate, pledge labour or services, or volunteer to help fund raise.

### > WHAT NO COOKS!

In the September Messenger we asked for recipes to go in to the **Modbury Cookbook**. So far we have had 3! There must be more – what about all those wonderful cakes, pastries and meringues in the Fruit and Produce Show. Come on – we know you are out there.

Send them by e-mail to [prestons@onetel.com](mailto:prestons@onetel.com) or drop them in to the Parish Office in Church Street.

### > MARS LOTTERY

Join now by ringing Lynn Weeks on 01548 830007.

**Modbury Tennis Club**  
in aid of  
**The Community Sports & Recreation Centre**  
 Present the return of the  
**INCOMPETENT BROTHERS**  
 A Disco At The White Hart  
 Assembly Rooms  
 Sat. 10<sup>th</sup> November 2007  
 From 7.30pm  
**Dance the night away to your favourite grooves**

MARS 50 – 50 LOTTERY RESULTS		
<b>JUNE 2007</b>		
1 <sup>st</sup> 114	Sarah Wyatt	£25.00
2 <sup>nd</sup> 092	Carol Smith	£15.00
3 <sup>rd</sup> 012	Yvonne Helps	£10.00
<b>JULY 2007</b>		
1 <sup>st</sup> 040	Graham Winch	£25.00
2 <sup>nd</sup> 058	Margaret Fielden	£15.00
3 <sup>rd</sup> 103	Mr D Mitchell	£10.00
<b>AUGUST 2007</b>		
1 <sup>st</sup> 08	Jim Pelford	£24.75
2 <sup>nd</sup> 76	Sally Hosking	£14.85
3 <sup>rd</sup> 43	Gareth Janes	£9.90

-----

<b>FROM:</b>	<b>Name</b>	
	<b>Address</b>	
	<b>Telephone:</b>	<b>E-mail</b>

- ❖ I enclose a cheque payable to 'Modbury Association of Recreation and Sports'
- ❖ I will pledge ..... hours of labour at £..... per hour to the Build Project.
- ❖ I am willing to assist run fundraising projects. Please contact me.

❖ **Please complete/delete as appropriate and send to:**  
 Phil Jolly, Treasurer - MARS, Silverhill, 3 Treveor Gardens, Modbury



## TITHE MAP

### THE UNIQUE HERITAGE OF MODBURY

It is hoped that a copy of the Modbury Tithe map will be mounted in the White Hart, to complement the excellent collection of Modbury Historic Photographs.

The collection of ten A1 panels is still looking for a storage location in the centre of the town. This is a unique reflection of our Heritage and we require a safe dry central location to store these valuable panels.

**A reminder:** If any parishioners have in their possession artefacts or documents that relate to the History and Heritage of Modbury, we can arrange to have them photographed or copied free of charge. Contact Roy Sims on 830530.

### NATIONAL SERVICE REUNION 2007

**A reminder** to all ex National Servicemen. We intend to hold the 2007 re-union during the third week in October. All members will be notified. The Veterans Agency have reminded all those who served in the armed forces up to December 31<sup>st</sup> 1959, that they are entitled to an official medal to commemorate their service. Contact number. 0800 1692277.

In addition the Royal British Legion can provide a National Service Medal that is also officially recognised.

The following ex-servicemen were notified of the 2006 re-union and will be invited to the event in 2007, which will once more be held in the Modbury Club.

Bob Campbell-Smith, Roy Fox, Derek Hale, Bob Hurrell, Don Masters, David Mitchell, Frank Mullery, Alan Parrish, Jim Petford, Derek Perkins, John Robinson, Gordon Talling, Andrew Thomas, Barry White, Adrian Wood, Peter Willis, Michael Hinton, David Cranmore, James Cresswell, Jim Irish, and Paul Stanton.

If there are any others who live in or near Modbury, who were called up for National Service in the post war years, who would like to join us for the evening they would be very welcome. Contact Roy Sims: 01548 830530.

*Roy Sims*

### USED INJET CARTRIDGES TONERS & OLD MOBILES

Be green and contribute to the  
**MARS Project** at the same time.

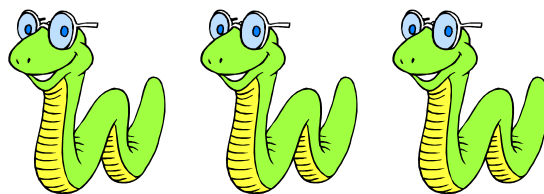
We can send inkjet cartridges, toners and old mobiles for recycling and receive funds in return.

Please take your old cartridges, toners and mobiles to the **Inkjet Collection Point** at:

**LUSCOMBE MAYE  
BROAD STREET, MODBURY**

**Many thanks to all those who have already  
donated their toners and mobile phones – please  
keep sending them in.**

### THE GREEN CORNER



Reduce, Reuse, Recycle is a good way to become greener and the benefits will be felt not only by the planet struggling to keep up with us humans, but could also be felt in our own pockets.

Many of us already have compost heaps or bins, and of course we have the brown bins collected by South Hams every two weeks, but there is also another environmentally friendly way of disposing of kitchen waste and producing something useful and valuable that will make your garden greener.

Worms are Nature's way of recycling and, allegedly, they also make interesting and cheap to maintain pets! The by-products are valuable liquid fertilisers and composts which can be used in many ways in the garden and greenhouse.

The District Council has teamed up with a local company, West Country Worms, based in Blackawton, to offer home composting bins and wormeries to residents of South Hams at discounted prices. The wormeries come complete with a nucleus of breeding worms – all you have to do is to feed them with your kitchen waste, including cooked and raw food.

Contact West Country Worms on **01803 712738**

Email: [info@westcountryworms.co.uk](mailto:info@westcountryworms.co.uk)

or visit their website at:

[www.westcountryworms.co.uk](http://www.westcountryworms.co.uk)

## MODBURY P3

The lovely late summer weather encourages us out on the footpaths, but a word of caution as we are encroaching on to the farmer's workplace.



Harvest is almost over but we shall see heavy machinery cutting the hedges. Always give them a wide berth. Stock, both cattle and sheep are run in the fields all year round. Sheep are easily spooked so take care. The Ramblers Association offer the following good advice with respect to cattle and stress the need to take particular care with cows and calves:

- ❖ Be prepared for cattle to react, and, where possible, walk carefully and quietly around them – do not split up a clustered group.
- ❖ If you have a dog with you, keep it under close control, but do not hang on to it should a bull or cow start to act aggressively.
- ❖ Cattle will usually stop before reaching you. If not, just carry on quietly, and do not run.
- ❖ Should a bull or cow come very close, turn round to face it and, if necessary, take a couple of steps towards it, waving your arms and shouting firmly.
- ❖ Above all, do not put yourself at risk. If you feel threatened, find another way round, returning to the original path as soon as possible.
- ❖ Remember to close gates behind you when walking through fields containing livestock.

Mike Oakins & Brian Weeks  
(Tel 830550/830007)

### Fashion That Rocks!!

*Emily Hughes and Lauren Butt proudly present the fashion show to end all fashion shows!!*

*They welcome you to join them in the Modbury School Hall on the 6<sup>th</sup> of October  
From 2:00pm-5:00pm.*

*If you are aged between twelve and fourteen and you think that your wardrobe needs a quick, non-pricey update, then this is the event for you!!!*

*Tickets £2.00 for adults, £1.00 children  
All tickets being sold in local shops 'Pickle's and 'Ringrose' Hope you can come!!  
All proceeds go to Rockshop Funds  
for Coach House centre.  
From Emily and Lauren*

*X*



## MODBURY MILLENNIUM MEADOW



Our volunteer Work Party on the 16<sup>th</sup> September attracted about twenty industrious workers who completed the removal of a long length of a partly collapsed post and barbed wire fence and tackled large areas of even pricklier brambles

and undergrowth. A new post and rail fence will be installed by our contractors very soon.

Several tons of stone were transported onto site in readiness for the rebuilding of parts of a hedge bank which will be carried out later in the year. The stones were very kindly donated by Peter and Lesley Preston and the heavy duty trailer was loaned to us by Bob and Kay Morley of Cottlass, which was most appreciated. We would like to thank all our volunteers for sparing their time and considerable energies and Sue Chambers for the welcome refreshments and wonderful pasties at lunchtime.

We are now beginning to see real progress with the area and plans are well advanced for the planting of the community orchard, plus various other ground works including additional seating. Arrangements for the new access bridge are slowly coming to fruition, but involve quite complex legal issues which are being handled by South Hams District Council.

We are all looking forward to the time when the physical construction starts and are grateful for the on-going wide ranging support we are receiving from the Landscape & Leisure department.

### **SOUTH HAMS TREFOIL GUILD**

Having a stall at the Vintage Machinery Show raised a further £120 and we have now achieved our target of £500 which will pay for a Shelter Box.

We plan to continue our support for this Charity, and will be holding a Coffee Morning at The Cottage Hotel, Hope Cove on Thursday 25<sup>th</sup> October from 10.30am.

**Transport can be arranged  
Please phone Mary Timmis on 830768**



Grove Park Farm and Fishley Farm

## Charity Apple Day

October 21<sup>st</sup> 2007

Starting at 11 a.m.

Pulping and pressing apples into juice  
Learn how cider is made

Families welcome

Ticket includes a savoury lunch and a taste  
of cider and apple juice.

Desserts for sale & drinks.

Adult tickets £5

Primary School £3

Under School age free

Proceeds in aid of local charities: Aveton Gifford Pre-School & The Coach House Centre in Back Street,  
Modbury is a Christian Outreach Centre that will provide  
a meeting place and services for the community

## Modbury



The Modbury Players and Modbury Young Theatre are getting ready for their next production scheduled for January 2008

Whether you're an old hand or new to the business, we want you! It's not just about acting, we also need help with music, props, costume, backstage, front of house, sound, lighting etc

If you want to be part of the fun then come to the Memorial Hall on Saturday  
6th October

Over 16s between 10-11 am  
7-16 year olds between 11am and noon

Young people who are interested in solo parts should prepare a **short** performance piece

# INVITATION

To a

## Special Preview Evening

On Friday October 12<sup>th</sup> from 6pm – 8.30pm

at

## Pure Indulgence - Fine Gifts

*2 Modbury Court, 32 Church Street, Modbury*

To view exciting new ranges of ladies and men's Alpaca Knitwear,  
leather bags, purses and wallets, Eco-Friendly sisal bags and  
shoppers and beautiful evening bags.



## TALL ORDERS

### Landscaping & property maintenance

~lawn mowing ~hedge trimming  
 ~brushcutting ~clearance...  
**HARD LANDSCAPING**  
 ~fencing ~decking ~patios  
 ~natural stone walling  
**CHAINSAW & TREE WORK**  
**UNDERTAKEN**  
 Chipper available/logs supplied  
 For a friendly free quote call  
 James Tall on 01548 831139 or  
 mobile 07967258318  
 (fully insured)

## Accountancy Services

- Accounts
- Tax Returns
- Start-ups and Business Plans
- Bookkeeping, Payroll & VAT
- Fixed fees in advance
- Self-Assessment and CIS

Contact Alex Smith (ACA) on

**01752 551 888**

To arrange a free initial, no obligation meeting



# RH

## TAXIS

Tel Richard:  
**07876 072 441**

Modbury \* South Hams

Safe \* Reliable \*  
Friendly

Local and long distance

## Acupuncture Can Help



**Fiona Matthews SRN LicAc MBACc**

Registered acupuncturist and a member of the British Acupuncture Council, providing acupuncture treatment since 1997, from her clinic at Sunnysdale Natural Health Centre in Ivybridge and also at the Plymouth Nuffield Hospital

Specialising in :-  
stress relief, pain management, fertility, menopausal symptoms, digestive disorders and facial enhancement acupuncture (non surgical facelift)

Sunnysdale Natural Health Centre,  
Cornwood Road, Ivybridge

For further information or to make an appointment please  
contact Fiona Matthews

Telephone **01752 895401**  
Mobile **07767 665677**



Kingsbridge Eye Care  
1 The Promenade  
The Quay,  
Kingsbridge  
Tel 01548 856 854

**'Look no further...'**

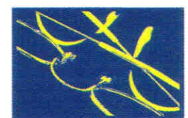
NHS/Private Eye Examinations  
Everything from designer sunglasses  
to low cost lens and frame packages  
Contact Lens Specialists

Testing daily

**A personal and professional  
service by Optometrists:**

Nigel Frost BSc (Hons) F.C. Optom,  
Angela Hickman BSc (Hons) F.C. Optom  
Kathryn Poole BSc (Hons) M. C. Optom

Nigel Frost  
Optometrist  
3 Chene Court  
Modbury  
Tel 01548 830 944



## Modbury Tourist Information Centre

**5 Modbury Court,  
Modbury, Devon  
PL21 0QR  
Tel: 01548 830159**

Email:

[modburytic@lineone.net](mailto:modburytic@lineone.net)  
[www.modburytic.f9.co.uk](http://www.modburytic.f9.co.uk)

**YOUR INFORMATION  
CENTRE**

## ANTIQUE FURNITURE REPAIRS & RESTORATION

Veneer Repairs, French Polishing  
Hand stripping & Re-finishing  
Wood-turning

**CANEFWORK & RUSH SEATING**  
Danish Cord & Seagrass



**Guye Roberts**  
MASTHEAD  
Parsonage Road  
Newton Ferrers  
Plymouth  
DEVON PL8 1AS

01752 872805

Website : [www.guye.co.uk](http://www.guye.co.uk)  
Email : [guye@guye.co.uk](mailto:guye@guye.co.uk)

## Robert Houcke DOMESTIC APPLIANCE REPAIRS

All makes of electrical  
appliances repaired by an  
experienced engineer  
covering the South Hams.  
Specialising in

**BOSCH**

**NEFF**

**SIEMENS**

**01803 858411**

**07714 386745**

## Avonberry Garden Service:

Time to revitalise your garden or create something new?  
We offer a full, professional gardening service, from help  
with design, to renovation, pruning, and general care.

Call for advice and quotations.

**Year round care given to your garden**



Telephone: 01548 830536  
or 07977 534125  
Email: Gandhservices@aol.com



## Auction of Promises

7.30pm Friday 12th October 2007  
Modbury Memorial Hall

1st lot drawn @ 8pm

Licensed bar

Interval and entertainment 9 – 9.30

**Tickets £2.50**

(tickets kindly available from Pickles)  
and programme of lots **READY NOW**

**60 FANTASTIC LOTS on offer including**  
*a day's golfing, a day's sailing, meal*  
*vouchers or even a dozen meringues!!*

*A joint fundraising event between (Modbury Twinning,*  
*Modbury School and Modbury Pre School)*

*For further info contact either Barry Cooper 01548 831281*  
*or Elaine Gosling 01548 831064*



## EDEN LANDSCAPING AND TREE CARE

- Lawn Mowing
  - Hedge cutting
  - Garden clearances
  - All tree work (NPTC Qualified)
  - Chipping and chainsaw work
  - **Fully insured**
- Strimming  
Turving  
Pressure washing

**Logs and wood chip for sale all year round**  
**for a free friendly quote call Adam Sloman on**  
**01548 830611 or (07760 324419)**

## AQUA Hair Design

Modern Organic Products  
(M.O.P.)

**MOP is a brand that offers a new  
standard in professional products**  
It creates simple solutions that  
are organic

Late opening Fridays  
8.00 pm

No 7 Modbury Court

**01548 831260**

## Martin Ley PLUMBING

**REPAIRS AND NEW  
INSTALLATIONS**

- \* Bathrooms
- \* Showers
- \* Kitchens
- \* General Repairs

*Small jobs welcome*

**Tel: Modbury 830609**

**Mobile: 07811 934551**

## MODBURY EDUCATIONAL FOUNDATION

A small grant is available to  
students who are resident in  
Modbury and are starting either a  
course of Further/Higher  
Education or a Vocational Course  
this autumn.

**Applications in writing should  
be made by**  
**October 6<sup>th</sup> 2007 to:**

**Rev Neil Barker**  
**The Vicarage**  
**Church Lane**  
**Modbury PL21 0QN**

## STEP OUT FOR THE 'SOUTH DEVON WALKING FESTIVAL'

**13 - 28 OCTOBER 2007**

A brand new event for 2007 is the 'South Devon Walking Festival'  
Over 20 walks will take place during the two week period catering for all abilities.  
The trails include walks entitled 'Secret Slapton', 'Dartmouth's Hidden Creek'  
and the 'Great Hill Toddle'.

Full details will be published in the Coast and Countryside Autumn/Winter events programme  
and on the AONB website: [www.southdevonaonb.org.uk](http://www.southdevonaonb.org.uk)

**Further information: 01803 861384**

# ROCKSHOP

Fridays 7.00 – 9.00 pm  
Modbury School Hall  
10p Entrance

Younger Group Ages 8 – 11

Older Group Year 7  
Upwards

Hockey, Basketball, Giant  
Skipping, Football, Craft,  
Drama, Tuckshop and  
also for the older  
group: Community  
Activities, Occasional  
Discos and Live Bands.

A Christian Youth Group  
established in Modbury  
for over 30 years.

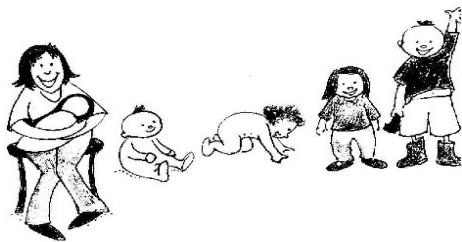
**EVERYONE WELCOME**

Contact: David 831589 or  
Simon 830857

## MODBURY TIDDLERS

A Community Run Group for  
Small People aged 0 – 5  
(and for the people who wipe their  
noses!)

**PLAYTIME FOR THEM!  
COFFEE AND A CHAT FOR  
US!**



Fridays 9.30 – 12 noon  
£1.50 per child

@Modbury Memorial Hall  
Enquiries ring Georgie:  
01548 831038

## A.R.B. GARDEN SERVICES

EXPERIENCED  
TRADITIONAL GARDENER

**MAINTENANCE &  
SENSITIVE  
RESTORATION**

CV AND  
REFERENCES AVAILABLE

Alan Boyce  
16 Cromwell Park Modbury  
Ivybridge Devon PL21 0RS

**01548 830747  
07989 415385**

## MODBURY BADMINTON CLUB

Memorial Hall  
Tuesdays  
7.30 – 10 pm

*New members always  
welcome  
For further information  
please contact:*

*Gill Jolly*

**Tel: 01548 831263**

## SHORT MAT BOWLS

The Modbury Short Mat  
Bowls Club

*Meet every*

**WEDNESDAY**

7.00 pm at the  
Memorial Hall

**New members are  
welcome**

*Come along and try it – it's fun!*



## NOVEL FORUM

We shall be meeting at the home of  
Ann and Mike Oakins, 1 Benedict  
Way (with many thanks) on  
Wednesday 21 November at 7.45  
pm when we shall discuss the  
following books:

*Robert Harris  
Imperium*

*Somerset Maugham  
The Painted Veil*

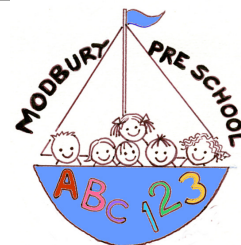
*Tim Pears  
In the Place of Fallen Leaves*

To enquire about the availability of  
books, please contact  
Ann on 830550 or  
Mary-Rose on 830310

## MODBURY CARING

*Office Hours*

**Monday 2 – 5 pm  
Thursday 9 – 12 noon  
Telephone  
01548 830118**



**FULL DAYCARE  
5 DAYS A WEEK**

Outstanding OFSTED Report  
Among top 3% of country!  
Your 2½ – 5 year old can now  
attend preschool all day

**Toddler Group Thursday**  
1.15 – 3.45 pm, all welcome, with  
parent/adult

**2 year olds are welcome**  
Tuesday to Friday afternoons  
Please phone or drop by to enquire  
about sessions to suit your needs.

**Modbury Preschool  
Back St, Modbury**

01548 831477

Registered Charity No. 1039616

## Advertising Tariff for The Messenger

In order to support the publication of The Messenger, advertising relating to business, or of a commercial nature will be charged at the rates shown below.

Information for community use will continue to be published free of charge.

### Single Insertion

1/9 <sup>th</sup> page	£10.00 per insertion
2/9 <sup>th</sup> page	£20.00 per insertion
1/3 <sup>rd</sup> page	£30.00 per insertion
1/2 page	£40.00 per insertion

### Three Insertions

1/9 <sup>th</sup> page	£8.00 per insertion
2/9 <sup>th</sup> page	£16.00 per insertion
1/3 <sup>rd</sup> page	£24.00 per insertion
1/2 page	£32.00 per insertion

### Six Insertions

1/9 <sup>th</sup> page	£6.00 per insertion
2/9 <sup>th</sup> page	£12.00 per insertion
1/3 <sup>rd</sup> page	£18.00 per insertion
1/2 page	£24.00 per insertion

### Eleven Insertions

1/9 <sup>th</sup> page	£4.00 per insertion
2/9 <sup>th</sup> page	£8.00 per insertion
1/3 <sup>rd</sup> page	£12.00 per insertion
1/2 page	£16.00 per insertion

Artwork of good black and white copy to be supplied.  
**Payment must be made in advance.**

Cheques should be made payable to Modbury Parish Council and sent to The Parish Office, 6, Modbury Court, Church St. Modbury PL21 0QR.

**For further information  
please contact**

**David Hansford on  
01548 830222**

## MODBURY PARISH COUNCIL PARISH OFFICE

6 Modbury Court, Church Street  
Modbury  
Tel: 01548 830222  
e-mail [modburypc@tiscali.co.uk](mailto:modburypc@tiscali.co.uk)

**Hours of Business-**  
Mondays 9.00am-1.00pm

**Parish Surgery**  
10 – 11 am every Saturday

### Planning Applications

Notices of planning applications lodged with SHDC are displayed on the Parish Noticeboard, outside the Post Office. Copies of plans relating to these applications can be inspected at the Parish Office during above office hours or when a Councillor is on duty.

### Contacting Parish Councillors

Parish Councillors attend the Parish Office, on a rota basis, on Saturday mornings from 10.00 - 11.00am. Should you have any parish matter you would like to discuss come along to the Office at 6 Modbury Court. You can also call in to the Office on Mondays from 9.00am - 1.00pm and speak to the Clerk, David Hansford.

He can also be contacted by phone on 01548 830222 or e-mail at [modburypc@tiscali.co.uk](mailto:modburypc@tiscali.co.uk)

At all other times you can leave a message either by phone or e-mail (see above) or alternatively you can write a letter or speak at the public forum held at the beginning of each monthly meeting of the Parish Council, held on the second Monday of each month at 7.00pm in the annexe of the Memorial Hall.

## MESSENGER CLOSING DATE

*The closing date for the  
November Messenger is  
16<sup>th</sup> October*

Please send all copy, by e-mail to [prestons@onetel.com](mailto:prestons@onetel.com) or deliver to the **Parish Office** (please note that all advertisements should be submitted **ONLY** via the Parish office – see below).

**Payment for all advertisements must be made in advance. Cheques should be made payable to Modbury Parish Council and sent to The Parish Office, 6, Modbury Court, Church Street, Modbury PL21 0QR. For further information please contact David Hansford on 01548 830222.**

The Modbury Messenger is published by The Modbury Parish Council and is printed by SHDC, Follaton House, Totnes.

*The views expressed in the  
Modbury Messenger do not  
necessarily represent those of  
The Modbury Parish Council.*

## SOUTH HAMS DISTRICT COUNCILLORS

Our South Hams District  
Councillors are:

**Geoffrey Fielden –  
830916**

**Mark Lawrence –  
830423, or  
[mark.lawrence@totalise.co.uk](mailto:mark.lawrence@totalise.co.uk)**

Our representative on  
DEVON COUNTY COUNCIL  
is William Mumford and he  
can be contacted on:

**01752 340967 or  
[william.mumford@devon.gov.uk](mailto:william.mumford@devon.gov.uk)**

# MODBURY DIARY – OCTOBER 2007

Tuesday 2 <sup>nd</sup>	Badminton Club	Memorial Hall	7.30 pm – 10.00 pm
Wednesday 3 <sup>rd</sup>	Short Mat Bowls 'An Inconvenient Truth'	Memorial Hall St George's Church	7.00 pm 7.30 pm
Thursday 4 <sup>th</sup>			
Friday 5 <sup>th</sup>	Modbury Tiddlers Rockshop	Memorial Hall School Hall	9.30 am – 12 noon 7.00 pm – 9.00 pm
Saturday 6 <sup>th</sup>	Parish Council Surgery Fashion That Rocks	Parish Office Modbury School Hall	10.00 am – 11.00 am 2.00 pm – 5.00 pm
Monday 8 <sup>th</sup>	Parish Council Meeting	Memorial Hall	7.00 pm
Tuesday 9 <sup>th</sup>	Badminton Club	Memorial Hall	7.30 pm – 10.00 pm
Wednesday 10 <sup>th</sup>	Short Mat Bowls History Society Meeting	Memorial Hall White Hart Inn	7.00 pm 7.30 pm
Friday 12 <sup>th</sup>	Modbury Tiddlers Rock Shop Auction of Promises	Memorial Hall School Hall Memorial Hall	9.30 am – 12 noon 7.00 pm – 9.00 pm 7.30 pm
Saturday 13 <sup>th</sup>	Parish Council Surgery British Legion Cake Stall	Parish Office Outside Bistro 35	10.00 am – 11.00 am 10.00 am – 12 noon
Tuesday 16 <sup>th</sup>	Badminton Club	Memorial Hall	7.30 pm – 10.00 pm
<b>Tuesday 16<sup>th</sup></b>	<b>Messenger Closing Date</b>		
Wednesday 17 <sup>th</sup>	Short Mat Bowls	Memorial Hall	7.00 pm
Friday 19 <sup>th</sup>	Modbury Tiddlers Rockshop	Memorial Hall School Hall	9.30 am – 12 noon 7.00 pm – 9.00 pm
Saturday 20 <sup>th</sup>	Modbury Health Centre Parish Council Surgery	Flu Vaccination Day Parish Office	8.30 am – 3.00 pm 10.00 am – 11.00 am
Sunday 21 <sup>st</sup>	Charity Apple Day	Grove Park Farm and Fishley Farm	From 11.00 am
Tuesday 23 <sup>rd</sup>	Badminton Club	Memorial Hall	7.30 pm – 10.00 pm
Wednesday 24 <sup>th</sup>	Short Mat Bowls	Memorial Hall	7.00 pm
Thursday 25 <sup>th</sup>	Trefoil Guild Coffee Morning	The Cottage Hotel, Hope Cove	10.30 am
Friday 26 <sup>th</sup>	Modbury Tiddlers Rock Shop	Memorial Hall School Hall	9.30 am – 12 noon 7.00 pm – 9.00 pm
Saturday 27 <sup>th</sup>	Parish Council Surgery	Parish Office	10.00 am - 11.00 am

## Kitchens By deZine

An individual kitchen service from design to installation

Quality fitted kitchens installed with  
leading brand appliances and accessories of your choice

Tel: 01548 830819 Mob: 07766 821548 Fax: 01548 831519

Mackintosh House, Palm Cross, Modbury

email: [info@deziner.co.uk](mailto:info@deziner.co.uk)

A Member of the Guild of Master Craftsmen