

# Modbury Messenger

**MODBURY'S OFFICIAL PARISH COUNCIL WEBSITE**

[www.modburypc.co.uk](http://www.modburypc.co.uk)

Do you have a local business with a website? If so why not have a link on the Parish Website. Contact Jean Carlyle-Lyon at [jean.carlylelyon@gmail.com](mailto:jean.carlylelyon@gmail.com). There is no charge.

## MODBURY WALKERS AND RUNNERS

### MODBURY P3

There were 102 walkers out on the four Fair Walks on offer this year and by all accounts they all had a wonderful time soaking up all that the Spring season has to offer. We are indebted to the Flete Estate for granting permission for walkers to explore the Carriage Ride as part of the routes which was new territory for most.



The Norman Furzeland P3 Special Achievement Cup was presented to Frank Mullery the following day, at the end of the Treasure Hunt in the town.



Frank has always been a regular participant in our walks and this year he completed 10 miles which, at the age of 82, and having had major heart surgery only a few months ago, is quite amazing..... coming in fresh as a daisy to collect his certificate.

A themed historical quiz set by Ann Oakins to exercise the mind leaving weary legs to rest over tea was won by Angela Hickman.

Many thanks to our many helpers and especially the Modbury Society for their ever efficient provision of Cream Teas. A total of £225 was raised by the event which will go to the Modbury Fair.  
*Brian Weeks & Mike Oakins 830007/830550*



### Alex's Marathon

On Sunday 25<sup>th</sup> I completed the London Marathon, stumbling over the line in 4 hours 13 minutes 44 seconds. Four months of training and a healthy diet saw me shed two stone and raise over £2000 for a very worthy cause, the Multiple Sclerosis Society.

I would like to thank everyone who sent their donations and their best wishes because both were very much appreciated in the last two miles of the race. I recommend the experience to anyone; the Marathon is a fantastic event which makes a big difference to all the charities that are supported, so please, if you fancy joining me in running it again next year, let me know!



*Cheers ..... Alex Shepley*

**Messenger Note:** Nicky Shepley is particularly proud, not only for all the effort, but that he ran it for her and others like her who have MS.

### MESSENGER MESSAGE

As usual, there will be no Messenger printed in August so please ensure that all articles and advertisements for this period are e-mailed to [prestons@onetel.com](mailto:prestons@onetel.com) by **16 June** for inclusion in the July Messenger.

## AROUND THE CHURCHES



### St Monica's Roman Catholic Church

St Austin's Priory  
01752 892606  
Sundays  
9.00 am Mass  
*Everyone Welcome*

---

---

### Modbury Methodist Church

#### Superintendent Minister

Rev John Beadle  
(Tel 01548 852073)

**Minister**  
Rev Gordon Davis  
(Tel 01803 862350)

#### Sunday Services

10.30 am in  
St Monica's Church

This is a small friendly group  
Do come and join us

#### June Services

**Sunday 6<sup>th</sup>**  
Rev Roy Allison

**Sunday 13<sup>th</sup>**  
Mrs Jo Rotas-Clements

**Sunday 20<sup>th</sup>**  
Rev John Beadle  
Holy Communion

**Sunday 27<sup>th</sup>**  
Rev Gordon Davis  
United Service

#### LETTER FROM MIKE JEFFERIES

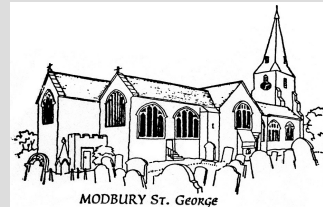
It must have been 1994. I know it was, because we were celebrating our Silver Wedding Anniversary with a week on the island of Crete. We were just beginning to get the hang of it. You know the sort of thing – eating in homely tavernas rather than shiny restaurants, and ordering local wine by the carafe not the expensive bottled stuff. The calamari (squid) and Greek salad that evening were particularly enjoyable, although my wife Enid has never been able to understand the attraction of eating rings of lightly battered rubber. The music was suitably atmospheric, adding to the already delightful experience of dining with the gentle Aegean lapping almost at our feet. Then, suddenly, we stopped, mid-mouthful. The music was instantly familiar. “Who pays the Ferryman?” the theme to a television drama back in the 70s. We hadn’t heard it for 15 years or more, but it seemed so evocative, almost as though we were there on the set. Which, as it turned out, we were! Elounda was where much of the programme had been filmed, some of it in this very taverna, so the proprietor proudly claimed.

I wonder why and how it is that music has such power to stimulate the senses; to touch the heart, the mind and the memory.

I was reminded of this only a week or two ago. I picked up an old cassette tape at home, which I hadn’t listened to for perhaps 20 years. It was of songs performed by a Worship band and choir at a church I attended in York some 30 years ago. I remembered how it was as though God was speaking to me through these songs, connecting with me and getting me to listen to Him, in a way no friend or preacher had. That’s one of the problems with music: it has the power to change or shape your life. It can challenge you and take you in a new direction. It certainly did that for me.

And so I end with a caution. If you should visit a church near you, especially if you have not been for some time, and if you go hoping to meet with God through the words and music, you probably will. And you may never be the same again.

On second thoughts it might just be safer to visit a Greek island or two!



### St George's Parish Church, Modbury *Connecting people to God* SERVICES AND EVENTS - JUNE

#### Wednesday 2<sup>nd</sup>

7.30 pm – Worship Group Practice

#### Thursday 3<sup>rd</sup>

9.15 am ish – Noah's Ark

#### Sunday 6<sup>th</sup>

9.30 am – Holy Communion

#### Wednesday 9<sup>th</sup>

7.30 pm – Standing Committee

#### Thursday 10<sup>th</sup>

9.30 am – Holy Communion

#### Sunday 13<sup>th</sup>

8.00 am – Holy Communion

9.30 am – Family Service

#### Thursday 17<sup>th</sup>

9.30 am – Holy Communion

#### Saturday 19<sup>th</sup>

2.00 pm – Fete in The Vicarage Garden

#### Sunday 20<sup>th</sup>

9.30 am Family Communion

#### Thursday 24<sup>th</sup>

9.30 am Holy Communion

#### Saturday 26<sup>th</sup>

7.00 pm – Lamagaon Thanksgiving Meal  
at St George's

#### Sunday 27<sup>th</sup>

8.00 am – Holy Communion  
10.30 am – Joint Service with Modbury  
Methodists at St Monica's Church

**St George's & St Andrew's are  
open every day for prayer**

#### **WE NEED YOU!**

### St George's Church Fete Saturday June 19<sup>th</sup>

Offers of help and contributions of cakes, preserves, produce, plants, books, bric a brac, toiletries, jewellery and full bottles would be much appreciated.

#### **Please contact:-**

Sue Chambers - 831447

Carole James - 830804 is willing to  
come and collect your good quality

bric a brac

**Thank you**

# PARISH PAGE

## LOCAL DEVELOPMENT FRAMEWORK

The consultation process closing deadline has been extended to 4.00 pm on Friday 2 July. Written comments should be made to: South Hams District Council, Forward Planning Department, Follaton House, Totnes TQ9 5NE. Details of the framework can be seen on the SHDC website – [www.southhams.gov.uk](http://www.southhams.gov.uk) or hard copies are available for inspection at the Parish Office.

## FIRE BRIGADE

We are extremely fortunate to have an auxillary station in Modbury, **BUT** it will only be viable if there are enough volunteers willing to man the station. If you are over 18, physically fit and interested to know more please contact: Nigel Toms on 01548 830634.

## BEST KEPT VILLAGE

The inspectors will be visiting the town unannounced in May and July. It would be really good if this year we could achieve our highest ever result. So please help wherever you can by keeping gardens and road fronts as tidy as possible. In particular take dog bags to the proper dog bins or back home for disposal. Please do not hang or leave soiled dog bags in hedgerows/fences.

## MODBURY FAIR

The Parish Council wish to thank everyone involved with Modbury Fair. Despite the chilly weather the event was a great success and once again showed what a great community spirit we have. So thank you Pauline and everyone who helped run the various events and of course everybody who participated or spectated.

## DAVID RICKMAN

David has been Chairman of the Parish Council since May 2002. This year, no doubt in order to spend more time on the golf course, he decided not to stand for re-election as Chairman! We are extremely grateful for his guidance and good chairmanship whilst he has occupied the 'hot seat'. David, your colleagues on the Council and the parishioners of the town thank you for your service to the community.

Peter Watts has been elected Chairman for the year to May 2011, Rob West continues as Deputy Chairman.

## LOCAL SERVICE PROVIDERS

The Parish Council are interested in publishing in the Messenger a list of local service providers who would be willing to provide an 'Emergency Service'.

Plumbers, electricians, builders, etc who are locally based and willing to address emergency problems would be listed with name, trade and contact number in an 'Emergency Call Out' listing to be published each month.

If interested contact David Hansford at The Parish Office  
Tel: 830222 (on Monday mornings) or e-mail  
[modburypc@tiscali.co.uk](mailto:modburypc@tiscali.co.uk).

## PLANNING

**Modbury Parish Council recommended approval** for the siting of a wooden shed on Allotment Plot 13, Church Lane.

## DEVON HOME CHOICE

Devon Home Choice is a Choice Based Lettings Scheme which covers both the South Hams and the whole of Devon. Each week Council and Housing Association properties available to be let in the South Hams will be advertised. Applicants will then have to bid for each property.

Each bidding period is fairly short – from each Wednesday to the following Monday. Current weekly vacancies will be available from the display stand outside the Parish Office in Modbury Court. Vacancies are also advertised on the website [www.devonhomechoice.com](http://www.devonhomechoice.com).

## A DISTRESSING INCIDENT

On the morning of April 21<sup>st</sup> a couple of youths, one riding a mountain bike on the pavement, pushed past an obviously disabled resident, causing her some distress. When a passing gentleman remonstrated with them he was treated to a stream of abuse and foul language. Whilst this is totally unrepresentative of most of our young people it is a concern that some choose to ride bikes on congested pavements and to speak with such foul language. Would they speak to their grandparents like that?

## MODBURY TOURIST INFORMATION CENTRE

### MANAGER REQUIRED

The Modbury (Tourist) Information Centre has been running for approximately 25 years providing an essential service to tourists and townsfolk alike.

Our annual brochure/guide provides a vital link between local traders and accommodation providers with prospective visitors from home and abroad. The centre is run by volunteers and aside from some small grants is self financing.

We need a Manager to take over the day-to-day running of the office during the season and prepare the annual guide - liaising with advertisers, printers and photographer.

The position is a voluntary one although an Honorarium will be paid. The role is part-time and hours extremely flexible. It would suit someone who enjoys meeting the public and providing a service to the community. Good PC skills, an eye for detail and creativity plus a real desire to support the town are essential.

*If you would like more information or wish to apply please ring Peter Preston (Chairman) on 01548 831324*

*or write to him c/o Modbury Information Centre  
5 Modbury Court, Modbury PL21 0QR  
or e-mail [prestons@onetel.com](mailto:prestons@onetel.com)*



**MODBURY FAIR – MODBURY HISTORY SOCIETY  
6<sup>TH</sup> MAY MEETING  
DEVON RURAL ARCHIVE, SHILSTONE**

To celebrate the 2010 Modbury Fair, the History Society, in conjunction with the Devon Rural Archive met at Shilstone. We were pleased to welcome over 30 members and guests. The evening commenced with an introduction to the DRA and its aims and details of the current research programme. It was presented by Diana Gower, a member of the staff. This was followed by an introduction to the content of the Modbury Heritage website by Roy Sims, who indicated the popularity of the site and was able to present the range of information that attracts worldwide interest. He paid particular tributes to the Hammerstein family, who not only designed the website but continue to maintain it. A significant statistic was that between January and May of this year we have received 1768 hits.

The members were then provided with a conducted tour of the resources including a Dartmoor Photographic exhibition, followed by a visit to the resource centre where the History Society Heritage Panels are on permanent display. The library contains many books and precious maps of the area. It is open to the public on Tues/Wed/Thurs of each week between 1100 and 1500hrs.

The final event was a fascinating talk given by Phil Andrews on the Battles of Modbury 1642 and 1643: he explained that up to 12,000 soldiers were involved in the conflict, and gave an exciting account of how the battles were conducted. He reminded us that the Town was very different in layout, and the roads very primitive. He brought with him some of the munitions that have been found. Sadly of such a siege there remains but little evidence other than the street and place names.

*Roy Sims, Heritage Coordinator*

## DEVON PICTURE DAY

**SATURDAY 19 JUNE 10.00 AM – 2.00 PM**  
**At The Devon Rural Archive, Shilstone Modbury**

In partnership with the Dartmoor Archive and the Totnes Image Bank who together have years of experience handling, scanning and storing images. With your help these three charities will move a step closer to their goal of preserving and recording our county's history for the future.

Do you have any Devon photographs or postcards of interest?

Do you have pictures of local events, people or family get togethers? Perhaps you have shots of buildings or wonderful Devon landscapes? If you do then we would love to see them.

So bring them along to **Devon Picture Day** we will scan them free of charge so that they can be preserved for future generations.

Enquiries to: **Amy Davis DRA Administrator 01548 830888** or **James Dunbar, Dartmoor Archive Manager 01752 837265** or **Barrington Weekes, Totnes Image Bank Manager.**

Map and details available at:  
<http://devonruralarchive.com>

## IT'S A WIDE, WIDE, WATERY WORLD



The theme for this year's Modbury Fair, 'Through the Decades', had been given a teasing twist and reappeared as **'Through the Deck Aids'** for an Exhibition with a maritime theme which took place in St George's Church during Fair Week. Here was a way of combining an enjoyment of the general theme of the Fair, of decades past and present looked at in a linear way, with an appreciation of another dimension, width: our wide, wide world as seen through the exhibits themselves – the deck aids.

Naval uniforms, flags, models of ships and boats, including a large model of a dhow, photographs, lobster pots and shells – these were just some of the items provided by the local population for this event. Who would have imagined an authentic model of a Kashmiri houseboat to be a treasured possession of a Modbury resident, or that among the contents of a local attic hid such nautical chandlery as dead eyes and knees?

How could visitors help but be affected by the altar frontal in the sanctuary, specially created for the Exhibition: those powerful waves which drew you close, as if simply commanding your humility. A beach scene had been assembled in the north transept, and Noah's Ark had found dry land at the end of the nave. A world map flagged up where the people of Modbury had travelled in a boat, and quotations about the sea, written with skill and care by local calligraphers, added a reflective aspect to the theme.

The children of Modbury School and Pre-school, the Brownies and young sailors on Noah's Ark, had put together their own displays, and it was pleasing that some of the children were able to visit the Exhibition during learning time. A map of the mouth of the Avon and Burgh Island – complete with sea tractor – hid buried treasure; other inter-active pastimes invited visitors to add their paper boat to a growing armada, to send a message in a bottle, or become absorbed in a fishing game. To see a first-decade toddler hand a rod to an eighth-decade visitor, an invitation to join in with no words said, was a happy and memorable moment.

Refreshments were served from the Galley, with the maritime theme carried through in detail. Tables were decorated with pots of flags, not flowers, shells became sugar basins, and waitresses donned nautical tops.

Having an idea which can inspire and involve a community so fully is a gift in itself: making it happen is something else. It is obvious that a huge amount of work and energy was involved in staging this exhibition. On behalf of all those who enjoyed Through the Deck Aids, I would like to congratulate Caroline Barker and her co-workers for a brilliant idea carried through to success and acclaim for our pleasure.

*Nancy Savery*

# SCHOOL REPORT

## SMART ART

This term more than any other the school has become a hive of creative activity with a wide-ranging programme of highly original art projects.

The children are taking part in a large exhibition at The Watermark in Ivybridge on the 12th July. The exhibition will feature work from a group of schools in our local area under the title 'Building Memories'. This theme has been chosen because lots of the children tell us that they enjoy learning through the arts and that working in this way helps them to remember.

So far this term we have been visited by a felt-making artist who worked alongside year 3 to produce a beautiful felt wall hanging which will be displayed in school after the exhibition. Also, year 4 had a lace making demonstration as well as having a go themselves. And we have been lucky enough to have a go at some graffiti style art with a German language assistant who has been visiting the school from Ivybridge Community College.

*Mrs Harvie*

## VOUCH FOR US

You may not have children at the school but it's likely that now and again you stock up on bits and pieces in one of the big supermarkets.

Modbury School is avidly collecting Tesco's for Schools vouchers and Sainsbury's Active Kids Vouchers and would be grateful if everyone could collect them and pass them on, whether or not they're connected to the school. To help with this, staff at Pickles have kindly offered to place a collecting box in the shop where vouchers can be dropped.

Over the years the school has amassed some excellent equipment through these schemes. Tesco's vouchers have to be collected by June 8th and the Sainsbury's vouchers by the end of July.

So don't let your mind wander or automatically reply 'No,' when the cashier takes you through the well-rehearsed Checkout Litany. Say 'Yes,' to the vouchers, take every one you can get your hands on and either pass them on to the school or put them in the box at Pickles. After all, every little helps.

## A PASSION FOR FASHION

Don your dark glasses, your little black dress and your best Beckham pout and sashay to a front-row seat for Modbury's fashion event of the year.

Lovely local models will be showcasing some of the summer's hottest trends in an event of fun and fashion hosted by Off the Peg. There's no ordering involved; try and buy on the night and pay by cash, credit or debit card.

The show will be on Tuesday, June 15th, in the Memorial Hall. Doors open at 7.30pm and the show starts at eight. Tickets cost £5 each and all proceeds go to the school.

Front-row seats can't be guaranteed as tickets are selling out fast, but you can still get yours by dropping into Pickles or contacting Kate West on 831391 or Claire Hagger on 830957.

## FAIR ENOUGH

Fair Week passed in its usual blur of friendly rivalry and competitive spirit. From the Modbury Mile to the carnival via the pet show and beetle driving, the children made the most of every opportunity to show what they are made of.

As anyone who's ever tried it will tell you, the extremely hilly mile is a very tough race and every child who took part can be proud of their achievement. And just as much effort went in to their costumes for the carnival.

The extended Royal Family, headed by May Queen Amelia George and May King Tom West and their various attendants, undertook an extensive round of engagements with some style.

On market day, the tombola stall raised a very healthy £100 for the school, so many thanks to all those who sent in items and helped run the stall.

*Ellen*

## Sainsbury's and Tesco's School Vouchers

*At Modbury School we are now collecting Sainsbury's and Tesco's vouchers.*

*Last year we were able to use the vouchers for some great new equipment and we would love to get even more this year.*

*You don't have to have a child at the school to help, just pick up your vouchers when you shop and drop them off at Pickles.*

*Many thanks*



## MODBURY TIDLERS

A Community Run Group for Small People aged 0 - 5 (and for the people who wipe their noses!)

PLAYTIME FOR THEM!  
COFFEE AND A CHAT FOR US!



Fridays 9.30 - 12 noon £1.50 per child

@Modbury Memorial Hall

Enquiries ring Angie: 01548 831139



## MODBURY LOCAL HISTORY SOCIETY

**HURRY – BOOK NOW**

### SUMMER OUTING TO SIDBURY MANOR, SIDBURY TUESDAY 8<sup>TH</sup> JUNE

The coach will leave Modbury Post Office at 9.30 am. Price £20.00 which includes tea and biscuits at the Manor.

We will be calling at Sidmouth for lunch and then a tour of Sidbury Manor and Gardens – in the village of Sidbury. The Manor lies within its own parkland. This Victorian Manor House, built in 1878 by Sir Stephen Cave, is described by Pevsner as “a mansion in free Jacobean Renaissance style” with extensive walled gardens and many fine trees and shrubs.

**If you just want to go to Sidmouth for the day the price will be £10 for the coach only.**

For further details please ring Audrey Cresswell on 01548 830796 or David Mitchell on 01548 830446.

**Please sign up at Modbury Post Office – as soon as possible!**

Pay on the coach – cash or cheque. Don't delay, sign today!

*David Mitchell*



### The Royal British Legion Modbury Branch

The next General Meeting will take place on Monday 7th June in the Modbury Club, commencing at 7.30 pm.

At this meeting David Scott will be relating some of his experiences during his service in the Royal Navy.

New members welcome.

#### POPPY APPEAL FUNDRAISING

Many thanks to everyone who purchased Raffle Tickets at the Street Market during the Fair Week. We raised the sum of £228.00.

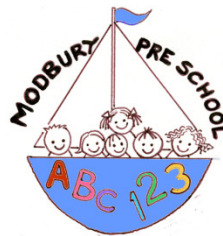
*David Mitchell*



We had the annual Flag Day in Church Street on Saturday 24th April and I am pleased to report that with 16 stalwarts we collected £284 despite the dreary conditions. I am grateful to my helpers and to all those of you who contributed.

Following on from this a successful Dinner/Dance was held on Friday 14th May at the Kitley Hotel in Yealmpton, and organised by Peter Lake. The event was well supported by 61 revellers and resulted in a profit of £900, of which £300 came from the raffle.

*John Robinson, Hon Sec*



## A BIG THANKS OF SUPPORT

Modbury Preschool would like to thank the following local shops for their donations towards our fundraising during the Modbury May Fair:

- ❖ Wilkinson's Butchers
- ❖ The Bakery
- ❖ Pips
- ❖ The Co-op
- ❖ Mackgills Delicatessen
- ❖ And The Floor Show



### Sue Craig

#### *Painting and decorating with a woman's touch*

- Reliable and hardworking
- Efficient, clean and tidy
- Fully insured

Offering natural paints as an environmentally-friendly and sustainable option.

T: 01548 560098

M: 07970 527049

E: susan.craig326@btinternet.com

## MODBURY SILVER THREADS

Day Trip by coach to Paignton and Brixham on Tuesday 22<sup>nd</sup> June. Leaving Modbury Post Office at 10.00 am and then on to Champernowne and Brownston Street. The cost is £10 per person, payable on booking

All details from:

**Liz – 01548 830313 or**

**Zena – 01548 830923**

*Everyone welcome for a lovely day out*

Our next friendly get-togethers at the Modbury Club are on **Tuesday 8<sup>th</sup> June and Tuesday 6<sup>th</sup> July at 1.45 pm**. Please come along for a chat, play cards, quiz and bingo. Everyone welcome.

## MODBURY SOCIETY SUMMER PARTY

**Saturday July 3<sup>rd</sup> at Upper Paddock, Back Street, Modbury**

**From 7 – 9 pm**

Tickets available from Pickles

We are encouraging all members to 'Bring a Friend'



*Nicky Shepley*





### ST LUKE'S OPEN GARDEN SCHEME

22 GALPIN STREET .... SUNDAY 13 JUNE

As part of the St Luke's Open Garden scheme, Sarah and Rob's Garden will be open to the public on Sunday 13th June from 2-5pm. Unlike the other gardens open in the Scheme this is a small cottage garden packed full with lovely flowers. There will be a small selection of plants for sale and for those who are good at cuttings Sarah is happy to share (please ask). Come and enjoy tea and cakes on the terrace - inside if wet.

For the children there are plenty of things to come and discover - there will be a prize for those who can find the animals in the garden. There are also fairies at the bottom of the garden for those who are very quiet. Please keep children off the flower beds and out of the pond! Weeding optional but if tempted there will be no objections.

Sarah Wyatt

South Devon Area of Outstanding Natural Beauty



### Modbury Wildflower Mapping Project

If you have enjoyed your walk today, maybe you could help us to find out more about the wildflowers growing around the Modbury Parish.



As part of the South Devon AONB 50th birthday celebrations, we would like to try to produce a record of the wildflowers found in the area—and we need people like you to take part!

Free Community Workshop Saturday 5th June

You do not need to be a flower expert—you just need some enthusiasm and some spare time! The project will be run so that anyone and everyone can take part and join in the fun. We can also then feed some of the results into the national Wildflowers Count scheme run by Plantlife and put Modbury on the map.

We will be holding a Community Workshop day on Saturday 5th June at the Memorial Hall from 10am until 2.30pm. There will be a chance to find out more about the project, learn a bit more about wildflowers from a local expert, discover the local footpaths and build on your map skills. In the afternoon we will be visiting a wonderful wildflower patch to have closer look.

The surveys can take place anytime from the workshop day until the middle of July. We will then be holding a collation session to put all of the information together and have a look at what you have found.

If you would like to get involved, or find out more, please call Nicky Bailey at South Devon AONB team on 01803 861384, email nicky.bailey@southdevonaonb.org.uk or just drop in on the day.



We hope to see you there!

## Caring for the Carers

In December The Modbury Inn's Darts Team, through its fund raising activities, presented a donation of £150 to Modbury Caring.

**A further donation of £500 was presented to Modbury Caring on Monday evening, 10<sup>th</sup> May 2010 at the Modbury Inn**

Modbury Caring is a local charity that provides a patient transport and shopping service to the patients registered with the Modbury Health Centre, Modbury.

The Modbury Inn in late 2008 'revived' its darts team and whilst promoting darts decided also to raise money for charity. With a small band of supporters – and a few pub functions last 'season' it saw £1200 donated to ShelterBox. This time around the charity is based even nearer home.

**The fund raising efforts are further supported by other local darts teams, specifically The Journeys End, Ringmore and The Dolphin at Kingston – both within the Modbury Caring catchment area.**

The bonus to all this is that since 'revitalising' the darts in 2008 we have seen an increase in the number of pubs that have also 'revived' their dart boards which has meant that more people are supporting their 'locals', particularly during the winter months, which in turn promotes revenue and community spirit. Long may this continue.

For more information on joining the darts team – visit The Modbury Inn. Internet: [www.modburyinn.co.uk](http://www.modburyinn.co.uk)

For further information on Modbury Caring see the notices displayed in the Modbury Health Centre. Internet: [www.modburyhealthcentre.co.uk](http://www.modburyhealthcentre.co.uk)



Kingsbridge Rotary Club) handing over the cheque to Dr Clare Day, Chair of Modbury Caring. Members of The Modbury Inn and Modbury Caring in support.

*Mervyn Kettle – The Modbury Inn Darts Promoter!*

### MARS 50 – 50 LOTTERY RESULTS APRIL 2010

1 <sup>st</sup> : 032	Carol James	£27.25
2 <sup>nd</sup> : 004	Peter Preston	£16.35
3 <sup>rd</sup> : 102	Mike Tillet	£10.90

### MAY 2010

1 <sup>st</sup> : 030	Jane Derbyshire	£27.50
2 <sup>nd</sup> : 069	Rob Wyatt	£16.50
3 <sup>rd</sup> : 109	Mr E Ewan	£11.00

To take part in the 50-50 Draw contact the Membership Secretary: Lynn Weeks – 830007

# MODBURY FAIR 2010

I would like once again to thank everybody who helped to make this year's fair a success and it only had a few very minor hitches. If it wasn't for my very small band of helpers this year's fair would have never taken place.

**The helpers were:-** Jane Brown for the Carnival; Kay Freeman for the Shop Window Competition; Lyn Barnes for the programme; Ann Cooke for being our Treasurer and running the bar at the BBQ; M.A.R.S. for doing the marshalling and the stalls; Ty Freeman and Emma Harvey Doddridge for looking after the ducks; Nicky for cooking the onions and making the Pimms - which everybody enjoyed - also for putting on the entertainment on the Saturday evening; Janet, Hazel, Ann and Rose for helping at the Bingo; Mark, Debi and Nicola for the BBQ and helping to get everything ready for it; the three people that got press-ganged into helping with the Mile race - without your help we would have been stuck; Tim Rolt for the use of his steps for the cup presentation after the mile; David Scott for doing a grand job once again as our Town Cryer; the Church for their exhibition; South Moor Vets for their Pet Show; Lisa from Bella's Flowers for the loan of the flower pedestals for the crowning; Mr Burnell-Nugent for the loan of Albert, and John Wilde for the loan of his car - both these vehicles were used to bring the royalty to their crowning; ....and finally our Royalty - Amelia, Ceria, Holly, Tom, Finlay and Evie.

A Big Thank You to you all, and to all the other people that put on quizzes, card games, beetle drive and gospel singing a very big thank you to you as well.

We had a good turnout for our Mile Race; there were over 90 children running from 5 to 16 years. Here is the list of cup winners:-

<b>Girls under 13 years</b>	Holly Craig
<b>Boys under 13 years</b>	Daniel Smith
<b>Girls 13-16 years</b>	Megan Hansen
<b>Boys 13 – 16 years</b>	James Smith
<b>Ladies</b>	Anna Middleton
<b>Men</b>	James Gibbs
<b>Veteran Ladies 35+</b>	Anna Middleton
<b>Veteran Men 40+</b>	Richard Rossiter
<b>Fastest Local</b>	James Gibbs

## CONGRATULATIONS TO YOU ALL

There was a good response as usual to our Pet Show.

The 1st prize winners were:-

<b>Hamsters/Rats/ Gerbils/Mice</b>	Emily Owen: 2 Rats – Black Belly & White Stripe
<b>Guinea Pig</b>	Rosie James: Stripey
<b>Rabbit</b>	Stella and Ruth Lawrence-King: Little May and Blue Bell
<b>Unusual Pet</b>	Sarah Julian: Parrot
<b>DOGS</b>	
<b>Puppy under 6 months</b>	Marina Briscoe: Samson
<b>Senior over 7 years</b>	George Pitcher: Trebor
<b>Best Working Dog</b>	Hannah Walters: Poppy
<b>Best Cross Breed</b>	Jolie and Zizi Hibbard: Gus
<b>Best Child Handler over 12 years</b>	Jamie Thorns: Poppy
<b>Dog most like its owner</b>	Lucy Romney: Sam
<b>Waggiest Tail</b>	Henry Wix-Pollard: Freddie
<b>Most Appealing Eyes</b>	Sam Eads: Prince
<b>Fancy Dress</b>	Stella Lawrence-King: Dizzy
<b>Obedience</b>	Andy Wills: Jess
<b>BEST IN SHOW</b>	<b>MARINA BRISCOE: SAMSON</b>

## WELL DONE TO ALL OF YOU

At the end of the show the Vets themselves were presented with the Allan Flatman Cup. They have been organising this show since 1986 and it was thought that they deserved some thanks.

It's a pity there weren't more entrants in the Carnival. I know the weather wasn't very good but that is beyond my control; we had several floats this year but we were down on the pedestrians, but for all you people who did brave the weather congratulations on your costumes - they were wonderful.

The first prize winners were:

Class 2:	Bigbury Butterflies
Class 3:	Lauren Stephens
Class 4:	Modbury Mummies
Class 6:	Derek Deans
Class 7:	Guiding and Scouting through the Decades
Class 8:	Dr Who
Class 9:	Nicky Lucas
Class 10:	Modbury Preschool
Class 16:	The overall winner of the vehicular Floats: Modbury Preschool

- ❖ The winner of the Shop Window Competition: The Pharmacy
- ❖ The winner of the Duck Race: Sarah Ringrose
- ❖ The winners of the Treasure Hunt: The Taylors and the Hickmans

Once again Congratulations to you all for your efforts. If there is anybody who would like to come and help us, it doesn't matter how much you do we would be very grateful, my telephone number is 830133.

*Pauline Ryder – Fair Coordinator*

## MODBURY FRUIT AND PRODUCE SHOW

Will be held on Saturday 31<sup>st</sup> July 2010



Just a timely reminder for all those interested in this event. It's time to put your thinking caps on and consider what you might enter in this year's show.

The show schedules will be in the shops in about two weeks time, so please take one - they are free.

Would people who won trophies in last year's show please return them to me at least one week prior to this year's show.

We hope we will have a good show and the visitors enjoy seeing all the exhibits.

*Angela Peters, Show Secretary*



## Modbury Association of Recreation & Sport (MARS)

# FUN DAY AND MUSIC FESTIVAL

Sunday 29<sup>th</sup> August 2010

&

# CAR BOOT SALE

Saturday 28<sup>th</sup> August 2010

For many years, MARS has been working tirelessly to develop sports and recreation facilities within the town and if you have visited the Recreation Field recently I am sure you would agree the Junior and Senior Football pitches, not to mention the Tennis Courts are something to be proud of. Further developments are planned to include a Multi Use Games Area (MUGA) and a small Skate Park.

Unfortunately the accommodation that exists is long past its sell by date and I hope we all agree new changing facilities are well overdue. The plan is to construct new changing rooms to include:

- Unisex changing accommodation for all sporting and recreational activities.
- Integrated showers and toilets.
- Separate changing facilities for match officials.
- A modern kitchen.
- A small meeting room.
- Storage for ground maintenance and sports equipment.

As part of our local fund raising campaign we are looking to recruit support for the Modbury Music Festival, Fun Day and Car Boot Sale we have planned for August Bank Holiday Weekend 28th & 29th August. We need willing helpers who are prepared to give an hour or two of their time for a worthwhile cause that will directly benefit the town.

On Tuesday 8 June there will be a meeting in The White Hart at 8.00 pm to gather ideas and details of volunteers willing to help. **ALL** welcome, including **ALL** ages. If you are willing to help but cannot attend please contact me on 01548 831160 or email me: [nikki@modburydevelopments.co.uk](mailto:nikki@modburydevelopments.co.uk)

Nikki Mitchell  
Fund Raising Co-Ordinator  
Modbury Association of Recreation & Sport

## THANKS TO YOU

The trustees of "Friends of Lamagaon" invite you to join them for a Celebration Dinner at St George's Church on Saturday 26<sup>th</sup> June at 7 for 7.30 pm.

You may have heard the remarkable story of how Modbury people have reached out to a poor rural community in the Indian Himalayas. In 2007 we began to support Lamagaon School near Darjeeling as it struggled to survive. Through regular donations from sponsors we are able to fund its 7 teachers and now 75 children from very poor backgrounds attend school. If anyone would like to join these sponsors by making a monthly contribution (as little as £2 would be a real help) we would love to hear from you.



In 2009, the Head teacher, Bishesh Subba asked for our further support so a new school could be built; the estimate of 514,500 rupees (£6,500) seemed small for a school but beyond our means. However, since October 2009, the people of Modbury, with a little help from their friends, have come up with £7,300, reaching our target even in the face of a falling pound.



We are amazed, astonished and very grateful. That's why we want to invite you to our Celebration Dinner. Come without your cash or your chequebooks and celebrate with us.

**From the trustees:** Neil Barker, Derek Deans, Vicky Hammerstein, Sylvia Mears, Kathy Milthorp, Sarah Milthorp. To help with our catering, phone Kathy on 830416 to let us know if you are coming.

If you would like to know more about the school, visit

[www.lamagaonmca.org.uk](http://www.lamagaonmca.org.uk)



## THE MAIL TRAIN ROBBERY 28 DECEMBER 1848 - 2 JANUARY 1849

From the "The Andrews' Diaries"  
by John Andrews II – born 1787 – died 1870  
(Transcribed by Jo James and the Archives' Study  
Group of Modbury Local History Society)

John Andrews was an ancestor of Mary Rose Rogers. His impressive family tomb is on the West Entrance to the Church.

"When left London for Plymouth by Mail Train at 9 o'clock pm. At Bristol the two thieves (Pool & Nightingale) came through my compartment of the carriage (1<sup>st</sup> class) into the other and from thence immediately got out or stepped into the mail-bags carriage adjoining and opened them or at least those for Plymouth & Devonport.

"On the train arriving at Bridgewater (it not having stopped immediately) they returned to their carriage – undiscovered this far; but the Mail-Guard found that the bags had been disturbed and on closer examination the Plymouth & Devonport bags opened, whereupon suspicion having fallen on these Men of bad reputation, search was made & many valuable letters found in a parcel under their seat. They were tried at the Lent Assizes & convicted – sentenced transportation for 15 years.

"I was necessarily a Witness to prove the facts in my knowledge. Exeter, Lymptone & Plymouth."

## MODBURY PATCHWORK AND QUILTING GROUP VISIT TO DAME HANNAH ROGERS TRUST

A small group of members from Modbury Patchwork and Quilting Group visited the Dame Hannah Rogers Trust on 14th May to present a group project quilt on the theme of sea, sand and beach.

The School was delighted with the quilt as unbeknown to us the theme for school projects this term was the seaside.



Members of the Group able to attend, from left to right were; Ronnie Shelly, Lynn Pinkney, Verena Sutton, Jill Copper, Pat Gocher, Edna Lamb, and Delia Elliott, together with Gary and Zak from the school.

*Lynn Pinkney*

## THE GREEN CORNER GONE POTTY



Congratulations to The Modbury Society for supporting the "One Pot Pledge" at Modbury Fair, encouraging new gardeners to grow something edible in a pot or container. There are now several dozen pots growing food in Modbury, along with many marigold plants given away to children. More pots, most of them re-cycled containers, with maybe tomato or cucumber plants are available for free – just ask at the TIC office. There's more information about the scheme run by "Garden Organic" on [www.onepotpledge.org](http://www.onepotpledge.org)

Gardening and growing food organically simply means free from pesticides and fungicides whilst protecting the environment. Nature itself provides lots of solutions – marigolds for example are a natural pesticide. Plant them next to your tomato plants and they will repel whitefly and attract lacewings which eat greenfly. The carrot fly is confused by the smell of onions, and the onion fly confused by carrots – so plant them next to each other and problem solved!

Too many greenfly can also be an indication of not enough ladybirds, too many rabbits means too few buzzards and foxes, too many mice and we need more cats, and too many slugs and snails in the garden means not enough ducks. And have you noticed an increase in flies when swallows leave in the autumn? Too many nettles in the garden? They were once grown as a crop for their fibre, you can use the tips as a vegetable, and the juice was used in place of rennet in cheese-making, so perhaps we should look at them differently.

So garden organically and sustainably and nature will support you – most of the time anyway. I was with a professional organic gardener friend once when he was asked what the organic solution would be for a lawn infested with moss. His instant response was "Move"!

**PS:** Following last month's Green Corner about the 10:10 campaign to reduce our carbon footprint by 10% by 2010, I've just heard that the newly elected coalition government has pledged to reduce central government's carbon emissions by 10% in a year. Blue + Yellow = Green.

*Jeff Booth*

## SOUTH HAMS MOBILE LIBRARY

The Mobile Library will be at the following  
locations on **FRIDAY** mornings

**Aylestone Pk** (arr 0930 - dep 0955)

**Cromwell Park** (arr 1000 – dep 1015)

**The Green** (arr 1020 – dep 1035)

Also on **MONDAY** afternoons  
(excluding Bank Holidays) at **Poundwell**  
(arr 1600 – dep 1630)

## ARHOY!

**ARHOY** stands for **A Roof Over Your Head**, a housing construction company which seeks to build environmentally friendly, energy efficient, sustainable homes.

The company has been pushing the boundaries of building design for over 60 years, building homes with German engineering solutions, and yet in local style. In other words ARHOY is concerned with sensitive development! On hearing about this regionally based company, **Modbury First Association** thought that it would be worth inviting Tom Legg, their Marketing Director, to tell Modbury about the possibilities....

In spite of being caught up in the chaos caused by the volcanic ash, Tom persevered with his journey so that he could deliver his talk, free of charge, at the Modbury Inn.

Tom had been visiting Germany, the origin of the ARHOY housing model and materials. The homes follow a German-Swiss model where running costs are half that of the UK. Low carbon, timber frame housing, (brought from sustainable forests overseas) and built to local design standards in Germany, helps the houses to both fit in and yet take advantage of the European technology and keep both economic and environmental costs down.

To help building companies like ARHOY, there is currently a 6 point code for measuring the sustainability of housing. Code 6 homes are completely carbon neutral, but most existing housing sits within Code 2 to 3 on the scale. ARHOY currently achieve Code 4 to Code 5 and are working towards building homes that are both affordable and sustainable at Code 6. They are currently building, for example, a small development of Code 5 homes in Thurlestone for a Housing Association.

40 – 50% of carbon emissions are thought to come from buildings, so with the overwhelming evidence pointing to an enhanced greenhouse effect, it is without doubt that the future of the British construction industry is green. Companies like ARHOY are helping to take the region forward in this critical area and may well offer communities like Modbury a pathway to becoming an even greener town.

The talk was followed by a lively discussion about the technology and transport costs to the environment. If you would like to hear more from Tom Legg or his company please contact him via – [info@arhoy.com](mailto:info@arhoy.com)

It was great to receive new members to Modbury First Association and we encourage more of you who are interested in both sustainable and sensitive development to come along.

More talks will follow on a range of topics related to sensitive and sustainable development. We are aiming to offer an alternative vision to that put forward by the planners during the recent and current round of consultations.

As well as building on the Village Design Statement and Parish Plan, the vision would build on the excellent suggestion at the public meeting (5<sup>th</sup> February) that Modbury is a house, where one development has an impact on the whole, and must be thought of as such in all matters of planning for its future. We would like anyone who is interested in participating (including land and property owners in Modbury) to get in touch for more information as it emerges. Contact Lindsay at [trevor.ward@tesco.net](mailto:trevor.ward@tesco.net)

Lindsay Ward

## LONDON MOONWALK 26.2 miles through the night Modbury Mooners Have Done it!



Despite a very unpleasant gastric situation for Steph and Katie, Ellen James, Steph Rayner and Eileen Berry were delighted to finish in 6hrs 19mins. Hats off to Steph and Katie for being such stars and soldiering on.

Hilary Garry and Katie West stormed home in a magnificent time of 5 hrs 57mins. Wowzer!

It was an amazing experience and we would like to say many, many thanks to all of our sponsors and supporters over the past months.

Hilary Garry

## Knitting Workshops

If you're a knitter and keen to learn new skills and techniques, why not come to one of our knitting workshops.

### Continental Knitting

Tuesday 15th June, 10am- 4pm

Learn how to knit the continental way, which is faster and more efficient than most English styles.

### Professional Finishing Techniques

Saturday 10th July, 10am- 4pm

Learn techniques to make sure your garment has a professional finish.

**Whether you're a beginner or an experienced knitter, you're bound to come away inspired.**

More workshops on these and other topics are planned for the Autumn.

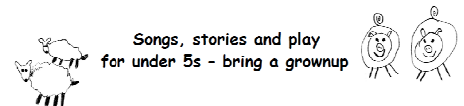
Cost for each workshop is £40 including lunch and refreshments.

To find out more or to book your place please call us on **01548 831911** (Monday-Friday) or visit our website <http://www.hulucrafts.co.uk>



Hulu, Sentinel House, Poundwell, Modbury, PL21 0XX

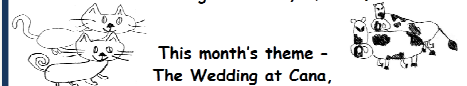
## Noah's Ark



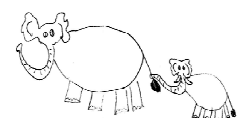
Songs, stories and play for under 5s - bring a grownup

Thursday 3<sup>rd</sup> June 2010  
from 9.15 am

in St George's Church, Modbury



This month's theme -  
The Wedding at Cana,  
changing water into wine  
Car Park in Church Lane



For more information contact  
Emma Romney 831126 or  
Jo Woodcock 831128





Form and Function  
Working in Harmony



A down to earth approach with a truly bespoke solution  
Beautiful kitchens fitted with a reputation you can trust

Call or email us to discover the potential of your kitchen

t. 01548 830 819 f. 01548 831 519  
27 Church Street □ Modbury □ Devon □ PL21 0QR

info@kitchensbydezine.co.uk  
www.kitchensbydezine.co.uk

### G H W Rosevear & Co

Chartered Secretaries and Incorporated Financial Accountants  
In Public Practice

#### Ready for Recovery?

Have you weathered the storm of recession or are you starting a new business?

#### Consult us for the way forward!

Now is the time to prepare for the future. Get working on those critical elements such as

- Budgets and Cashflow
- Working capital facilities
- Integrated business plans

#### Consult us for the way forward!

We can help you prepare your integrated business plan; and assist you to secure adequate working capital from your bank.

#### Consult us for the way forward!

We will prepare your accounts and work out your tax liabilities

We can also provide you with Book-keeping, Payroll Services and VAT Returns

#### Office Hours

G H W Rosevear & Co  
3, Modbury Court, 32 Church Street  
Modbury, Ivybridge, Devon, PL21 0QR

9<sup>15</sup> a.m. - 6 p.m.  
Monday - Friday  
Weekends by appointment

Tel: 01548 831427  
Fax: 01548 830977  
Email: george@holbrookass.com  
www.accountantsouthdevon.co.uk

### LIFE SMOOTHERS

TO MAKE LIFE RUN MORE SMOOTHLY

Caretaking / key holding

Weekly property checks

Liaising with tradespeople/services

Spring cleaning— pre /post move cleans

Small decorating work

Year round garden care service

Holiday care – feed pets, watering garden, tubs, indoor plants etc.

Help at home

Whatever the task – just ask!

We offer a year round professional service

Tel: 01548 550538 or 07588604387

Or email: lifesmoothers@aol.co.uk



Based in Modbury



Gas Works & Servicing  
Energy Efficient Heating  
Bathrooms & Showers  
All Hot Water Systems  
Maintenance & Repair  
Eco Energy Systems



Contact us now for a free estimate:  
Tel: 01548 830918 or Mob: 07863 128489  
info@wrightplumbing.co.uk www.wrightplumbing.co.uk



Mrs C V Harrington MCSP; MMACP

Chartered Physiotherapist

Registered with the Health Professional Council  
And all Health Insurance Companies

DOMICILIARY SERVICE / HOME VISITS



Tel: 01548 810023  
Mobile: 07776393927

Member of the Organisation of  
Chartered Physiotherapists in Private Practice



## EDEN TREE & HEDGE CARE TREE SURGEONS

- All tree surgery under taken
- (Qualified Tree surgeon NPTC qualified)
- Felling/reduction/pruning
- 24 hr call out on trees
- Lawn mowing / strimming
- Hedge cutting & laying
- Garden clearances
- Chipping and chainsaw work
- **Fully insured to £5 million**

Logs and wood chip for sale all year round  
for a free friendly quote call Adam Sloman on  
01548 830611 or (07760 324419)



## MARTIN LEY PLUMBING & HEATING

- Oil Installations,  
Servicing & Repairs
- Unvented Cylinders
- Bathrooms & Showers
- General Plumbing

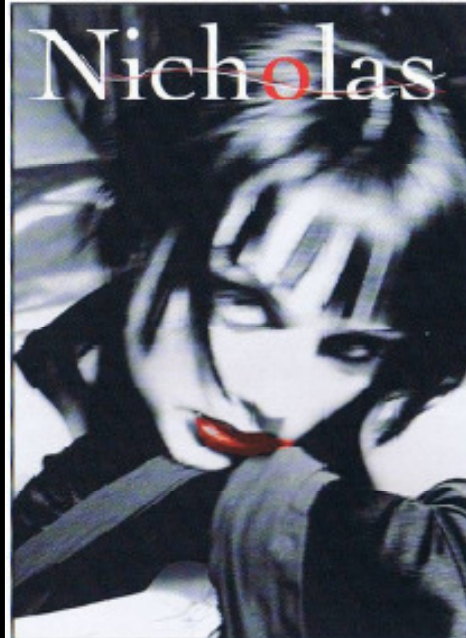
Tel: Modbury 01548 830609  
Mobile: 07811 934551

# ROCKSHOP

Fridays 7.00 - 9.00 pm  
Modbury School Hall  
10p Entrance  
Younger Group Ages 8 - 11  
Older Group Year 7 Upwards

Hockey, Basketball  
Giant Skipping, Football  
Craft, Drama, Tuckshop  
and also for the older group: Community  
Activities, Occasional Discos  
and Live Bands  
A Christian Youth Group  
Established in Modbury  
For over 30 years

EVERYONE WELCOME  
Contact David - 831589  
or Simon - 830857



Hairdressing

**GOLDWELL**  
Hair Cosmetics

LAMOUR  
Hair Care Products

ghd  
a new regimen for hair

Beauty Therapy

Dermologica Face and Body Treatments  
Holistic Massage  
Slimming Wrap  
St. Tropez Tanning  
Eye Lash Perming & Tinting  
Waxing  
**dermalogica**

Early morning or late evening appointments on request

London House,  
Church Street, Modbury, S. Devon  
Tel: (01548) 830152

*Wild Goose*

34 Church Street,  
Modbury, PL21 0QR

01548 830715

Stockists of Rowan &  
Colinette wool/patterns

English Blue & White China

Various Range of jewellery

Fashion Accessories

Pine Furniture

## THE GARDEN PROJECT COMPANY

PROFESSIONAL LANDSCAPE  
CONSTRUCTION

Brick, Wood & Stonework  
Decking, Fencing & Turfing  
Patios, Pergolas & Ponds  
Garden Buildings  
Planting & Maintenance  
Groundworks

01548 852436  
07967 746361

[www.gardenprojectcompany.co.uk](http://www.gardenprojectcompany.co.uk)  
Established 17 years



NIGEL FROST OPTOMETRIST  
3 Clene Court  
Modbury  
Devon  
Tel: 01548 830944

'Look no further'

NHS/Private Eye Examinations  
Everything from designer sunglasses to  
low cost lens and frame packages  
Contact Lens Specialists

Nigel Frost BSc(Hons) F.C.Optom  
Angela Hickman BSc(Hons) F.C.Optom  
Kathryn Poole BSc(Hons) M.C.Optom

KINGSBRIDGE EYE CARE      SALCOMBE EYE CARE  
No 1, The Promenade      84 Fore Street,  
Kingsbridge      Salcombe  
Tel: 01548 856854      Tel: 01548 843207



# BISTRO 35

Licensed Restaurant  
and Wine Bar

## SUMMER OPENING TIMES

**Tuesday to Saturday** Bar 6 pm – 11 pm  
Restaurant 6 pm – 9 pm

**Sunday** Bar 5 pm – 10.30 pm  
Restaurant 5 pm – 8 pm

## CLOSED ON MONDAY



The Bistro is available for small conferences,  
Luncheons, Weddings and Christenings  
Tuesday to Friday daytimes and Sunday Lunch  
Maximum of 40 people  
Rear Courtyard available

**MODBURY (01548) 831273**  
**35 CHURCH STREET MODBURY DEVON**



The **Nearly Naked**  
Veg Company  
Our farm, your table, no fuss

## South Hams Veg Boxes from the *Nearly Naked Veg Company!*

Veg grown *by us*, picked *by us*, then  
delivered *by us* to your home.  
Always grown without any unnecessary  
chemicals.

You can order **on-line** as a one-off  
or set up a regular order.

Call **Sam** for more info or to  
place your order over the phone.

Tel: 01364 646106  
info@nearlynakedveg.co.uk  
www.nearlynakedveg.co.uk

## Accountancy Services

- Accounts
- Tax Returns
- Start-ups and Business Plans
- Bookkeeping, Payroll & VAT
- Fixed fees in advance
- Self-Assessment and CIS

Contact Alex Smith (ACA) on

**01752 551 888**

To arrange a free initial,  
no obligation meeting



## ANTIQUe FURNITURE REPAIRS & RESTORATION

Veneer Repairs, French Polishing  
Hand stripping & Re-finishing  
Wood-turning

**CANEWORk & RUSH SEATING**  
Danish Cord & Seagrass



**Guye Roberts**  
**MASTHEAD**  
Parsonage Road  
Newton Ferrers  
Plymouth  
DEVON PL8 1AS

01752 872805

Website : [www.guye.co.uk](http://www.guye.co.uk)  
Email : [guye@guye.co.uk](mailto:guye@guye.co.uk)

## AQUA HAIR DESIGN



the blueprint for style

**Indigo** is a line of salon  
professional products which are  
also great to use at home as  
recommended by your hairdresser.  
Whether you need texture, shine,  
volume, root lift, straightening or  
heat protection – Indigo delivers!

**Late opening**  
**Thursdays - Fridays**  
**No 7 Modbury Court**  
**01548 831260**



## Advertising Tariff for The Messenger

In order to support the publication of The Messenger, advertising relating to business or of a commercial nature will be charged at the rates shown below.

Information for community use will continue to be published free of charge.

### Single Insertion

1/9 <sup>th</sup> page	£10.50 per insertion
2/9 <sup>th</sup> page	£21.00 per insertion
1/3 <sup>rd</sup> page	£31.50 per insertion
1/2 page	£42.00 per insertion

### Three Insertions

1/9 <sup>th</sup> page	£8.40 per insertion
2/9 <sup>th</sup> page	£16.80 per insertion
1/3 <sup>rd</sup> page	£25.20 per insertion
1/2 page	£33.60 per insertion

### Six Insertions

1/9 <sup>th</sup> page	£6.30 per insertion
2/9 <sup>th</sup> page	£12.60 per insertion
1/3 <sup>rd</sup> page	£18.90 per insertion
1/2 page	£25.70 per insertion

### Eleven Insertions

1/9 <sup>th</sup> page	£4.20 per insertion
2/9 <sup>th</sup> page	£8.40 per insertion
1/3 <sup>rd</sup> page	£12.60 per insertion
1/2 page	£16.80 per insertion

Artwork of good black and white copy to be supplied. **Payment must be made in advance.**

Cheques should be made payable to 'Modbury Parish Council' and sent to The Parish Office, 6 Modbury Court, Church Street Modbury PL21 0QR.

**For further information please contact David Hansford on 01548 830222**

## MODBURY PARISH COUNCIL PARISH OFFICE

6 Modbury Court, Church Street  
Modbury  
Tel: 01548 830222  
e-mail [modburypc@tiscali.co.uk](mailto:modburypc@tiscali.co.uk)

**Hours of Business-**  
Mondays 9.00am – 1.00pm

**Parish Surgery**  
10 – 11 am every Saturday

### Planning Applications

Notices of planning applications lodged with SHDC are displayed on the Parish Noticeboard outside the Post Office. Copies of plans relating to these applications can be inspected at the Parish Office during above office hours or when a Councillor is on duty.

### Contacting Parish Councillors

Parish Councillors attend the Parish Office, on a rota basis, on Saturday mornings from 10.00 - 11.00am. Should you have any parish matter you would like to discuss come along to the Office at 6 Modbury Court. You can also call in to the Office on Mondays from 9.00am - 1.00pm and speak to the Clerk, David Hansford.

He can also be contacted by phone on 01548 830222 or e-mail at [modburypc@tiscali.co.uk](mailto:modburypc@tiscali.co.uk)

At all other times you can leave a message either by phone or e-mail (see above) or alternatively you can write a letter or speak at the public forum held at the beginning of each monthly meeting of the Parish Council, held on the second Monday of each month at 7.00pm in the annexe of the Memorial Hall.

## MESSENGER CLOSING DATE

*The closing date for the  
July and August  
Messengers is  
16<sup>th</sup> June 2010*

Please send all copy, by e-mail to [prestons@onetel.com](mailto:prestons@onetel.com) or deliver to the **Parish Office** (please note that all advertisements should be submitted **ONLY** via the Parish office – see below).

**Payment for all advertisements must be made in advance. Cheques should be made payable to 'Modbury Parish Council' and sent to The Parish Office, 6 Modbury Court, Church Street, Modbury PL21 0QR.**

**For further information please contact David Hansford on 01548 830222 (Monday mornings – or leave a message).**

The Modbury Messenger is published by The Modbury Parish Council and is printed by SHDC, Follaton House, Totnes.

*The views expressed in the Modbury Messenger do not necessarily represent those of The Modbury Parish Council.*

## SOUTH HAMS DISTRICT COUNCILLORS

Our South Hams District  
Councillors are:

**Geoffrey Fielden – 830916**  
or  
[councillorfielden@  
southhams.gov.uk](mailto:councillorfielden@southhams.gov.uk)

**Mark Lawrence – 830423**  
or  
[Cllr.Lawrence@southhams.gov.uk](mailto:Cllr.Lawrence@southhams.gov.uk)

Our representative on  
DEVON COUNTY COUNCIL  
is William Mumford and he  
can be contacted on:  
**01752 873002 or**  
[william.mumford@devon.gov.uk](mailto:william.mumford@devon.gov.uk)

## PERSONAL ANNOUNCEMENTS

(Births, Deaths, Marriages, Thanks etc)

£5 per insertion - maximum 50 words  
(Subject to available space)

The Editorial Committee reserve the right to précis/abbreviate any copy submitted for inclusion in the Messenger.

S  
t  
G  
e  
o  
r  
g  
e  
,  
S  
C  
h  
u  
r  
c  
h  
F  
e  
t  
e

**Saturday June 19<sup>th</sup>**

**2.00-5.00pm**



**In the Vicarage  
Gardens**

(in Church if wet)

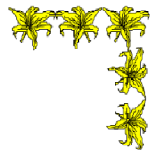
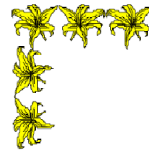
**Fun for all the family**

**Musical Entertainment**

**Bric a Brac, Bottle Tombola,  
Produce, Plants, Cakes, Books,  
Toiletries and Jewellery,  
Cards and Gift Paper  
Children's Activities and Games**

**Teas and Barbecue**

**Big Prize Raffle Draw**



**MODBURY  
OPEN  
GARDENS**

**Sunday July 11<sup>th</sup>**

**1.00-6.30pm**

**Scrummy teas in St  
George's church**

If you would like to open your garden  
contact Richard and Rachel Taylor 830021

**TICKETS AVAILABLE AT  
PICKLES FROM JULY 1ST  
IN AID OF  
ST GEORGE'S CHURCH**



**YOU ARE INVITED TO A  
FASHION  
SHOW!**

**AN EVENING OF FUN &  
FASHION HOSTED BY  
'OFF THE PEG'**

**AT MODBURY MEMORIAL  
HALL**

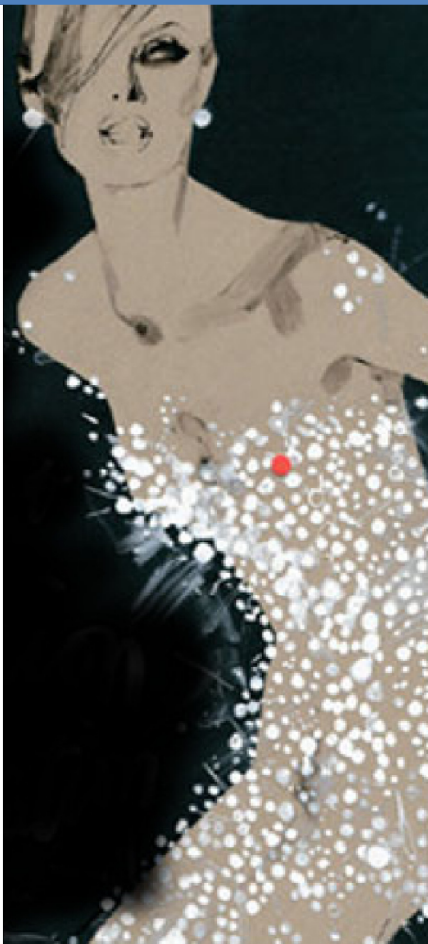
**ON TUESDAY  
15TH JUNE 2010  
DOORS OPEN AT 7.30 PM  
SHOW STARTS AT 8.00PM**

**NO ORDERING- TRY & BUY  
ON THE NIGHT..  
PAY BY  
CASH/CREDIT/DEBIT CARD**

**TICKETS ONLY £5**

**AVAILABLE FROM PICKLES  
OR CONTACT KATE WEST  
ON: 831391**

**IN AID OF MODBURY SCHOOL**



**Sunday 6th June!**



**@ 'Countrymans Choice' Farm Shop  
(Endsleigh), Ivybridge.  
8am - 1pm (7am sellers setup).  
Sellers - £5/car £8/van.**

**\*No market traders  
\*Toilets and refreshments on site.  
In aid of Modbury Preschool,  
Registered Charity No:1039616  
Contact details: Angie Tall 01548 831139.**

