

Modbury Messenger

MODBURY'S OFFICIAL PARISH COUNCIL WEBSITE

www.modburypc.co.uk

Do you have a local business with a website? If so why not have a link on the Parish Website. Contact Jean Carlyle-Lyon at jean.carlylelyon@gmail.com. There is no charge.

MODBURY FAIR 2010



THROUGH THE DECADES

Saturday 1st to Sunday 9th May

Programmes will shortly be delivered to households in Modbury. They are also available in many of the Modbury shops – so make sure you get a copy in order to enjoy all the events on offer this year.

Events during the nine day Fair include the following:

CROWNING OF THE MAY QUEEN & KING

Street Market	Modbury Mile Race
Treasure Hunt	Pet Show
Tea Dance	Bingo
Quiz	Beetle Drive
Euchre Drive	Gospel Singing
Duck Race	Shop Window Judging

Through the Deck Aids Exhibition

Footpath Walk followed by Cream Tea

Barbecue, Crepes and Entertainment

CARNIVAL

MODBURY TOURIST INFORMATION CENTRE

MANAGER REQUIRED

The Modbury (Tourist) Information Centre has been running for approximately 25 years providing an essential service to tourists and townsfolk alike.

Our annual brochure/guide provides a vital link between local traders and accommodation providers with prospective visitors from home and abroad. The centre is run by volunteers and aside from some small grants is self financing.

We need a manager to take over the day-to-day running of the office during the season and prepare the annual guide - liaising with advertisers, printers and photographer.

The position is a voluntary one although an Honorarium will be paid. The role is part-time and hours very flexible. It would suit someone who enjoys meeting the public and providing a service to the community. Good PC skills, an eye for detail and creativity plus a real desire to support the town are essential.

If you would like more information or wish to apply please ring Peter Preston (Chairman) on 01548 831324

*or write to him c/o Modbury Information Centre
5 Modbury Court, Modbury PL21 0QR*

or e-mail prestons@onetel.com

AROUND THE CHURCHES



St Monica's Roman Catholic Church

St Austin's Priory
01752 892606

Sundays
9.00 am Mass
Everyone Welcome

Modbury Methodist Church

Superintendent Minister

Rev John Beadle
(Tel 01548 852073)

Minister
Rev Gordon Davis
(Tel 01803 862350)

Sunday Services
10.30 am in
St Monica's Church

This is a small friendly group
Do come and join us

May Services

Sunday 2nd
Rev Gordon Davis

Sunday 9th
United Service @ St George's

Sunday 16th
Rev John Beadle
Holy Communion

Sunday 23rd
Mrs Valerie Grist

Sunday 30th
Mrs Joy Harvey

TIME TO TAKE STOCK?

From time to time it's a good idea to take stock of our lives. How have we been doing recently? Where are we going? Which way should we go?

When the Ascension of Jesus took place, the disciples were left gazing up into the empty sky, wondering what to do next and hoping that something might happen. That "something" was to be the gift of the Holy Spirit, who would enable them to carry out the command of Jesus to proclaim the gospel to a pagan and hostile Roman world. Thus Ascension Day, which this year is on 13th May, reminds Christians that the followers of Jesus are called to carry out God's work on earth. It's a very good time to take stock.

A good starting point is to **look around**, to look at the wonder of the world around us, with its beauty, complexity and vastness, to remember all the good things we enjoy ("count your blessings, name them one by one"), to think about God's love in sending Jesus to be the Saviour of all who trust him;

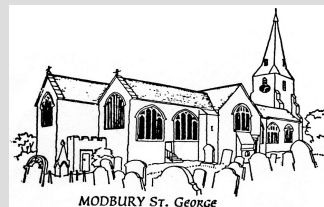
Sadly, there is much evil in the world. It's unfashionable to believe in the devil, but the Bible describes him as a "roaring lion, looking for someone to devour". Evil insinuates itself into people's lives, so **look out**, and be prepared. As Jesus said: "watch and pray".

The way to overcome evil is to **look up**, and keep our eyes fixed on Jesus, "on whom faith depends from start to finish". St Paul wanted to take hold of Christ's purpose for him: perfection. He knew he hadn't got there, but was doing his utmost to achieve it. Christians should be increasingly Christ-like – and that's a challenge for everyone!

People sometimes get completely bogged down with immediate problems. We need to be able to **look ahead**, to press on with the work God wants us to do. We mustn't let the past drag us down; we must look forward, not back, learning from our mistakes, but not being disabled by them. God will forgive all our past failures if we confess them to him, and will also give us the ability to succeed. The prize can be ours!

God promises never to abandon us or let us down. Perhaps the final exhortation should be to **look lively**, to be energetic and active as Christians, living life to the full **now** in the way that God intends.

Michael Tagent



St George's Parish Church, Modbury

Connecting people to God

SERVICES AND EVENTS MAY

Sunday 2nd

9.30 am – Holy Communion

Wednesday 5th

7.30 pm – Worship Group Practice
7.30 pm – Team Council in Lower Vestry

Thursday 6th

9.30 am – Holy Communion
10.30 am – Sunday Through the Deck
Aids Exhibition

Sunday 9th (Christian Aid Week)

8.00 am – Holy Communion
11.00 am – May Fair Service

Tuesday 11th

7.00 – 9.00 pm – Worship Course

Thursday 13th

9.30 am – Holy Communion
7.30 pm – Modbury PCC

Saturday 15th

St George's Spring Clean

Sunday 16th

9.30 am – Family Communion
2.30 pm – Children's Music Concert

Tuesday 18th

7.00 – 9.00 pm – Worship Course

Thursday 20th

9.30 am – Holy Communion

Sunday 23rd (Pentecost)

8.00 am – Holy Communion
9.30 am – Morning Prayer

Tuesday 25th

7.00 – 9.00pm – Worship Course

Thursday 27th

9.30 am – Holy Communion

Sunday 30th

10.30 am – Team Communion
(Preacher: Archdeacon of Totnes)
1.45 pm – Church Walk
(Meet at St George's Church Car Park)

**St George's & St Andrew's
are open every day
for prayer**

LOCAL DEVELOPMENT FRAMEWORK

It is expected that South Hams District Council will publish the results of the Local Development Framework proposals at the end of the month. Once published there will be a six week consultation period. Watch out for news on the SHDC website: www.southhams.gov.uk.

Written comments should be made to:
South Hams District Council
Forward Planning Department
Follaton House, Plymouth Road
Totnes TQ9 5NE

PLANNING

South Hams District Council granted and Modbury Parish Council recommended approval for:

Modbury Health Centre – Erection of single storey extension;
16 Brownston Street - Consent for satellite dish;
Co-op, Burns Court - Consent for fascia sign.

Modbury Parish Council made the following recommendations:

Kennedon Farm – Erection of two lean-to extensions to agricultural building – to be refused;
Green Vale, Stolford – Replacement dwelling – to be refused;
28 Church Street, Modbury – Internal alterations and handrail to steps to gardens - to be approved.

LOCAL SERVICE PROVIDERS

The Parish Council are interested in publishing in the Messenger a list of local service providers who would be willing to provide an 'Emergency Service'.

Plumbers, electricians, builders, etc who are locally based and willing to address emergency problems would be listed with name, trade and contact number in an 'Emergency Call Out' listing to be published each month.

If interested contact David Hansford at The Parish Office.
Tel: 830222 (on Monday mornings) or e-mail modburypc@tiscali.co.uk.

MESSENGER HELP REQUIRED

Do you live in or near Dark Lane, Oakwood Drive or Treveor Gardens? Would you like to help deliver the Messenger? We are looking for someone to deliver a small number of Messengers in this area. If you are able to spare half an hour each month please contact:

prestons@onetel.com or 831324

POLICE CONTACT DETAILS

General Enquiries:

(To report crime and for information or advice)
08452 777444

Emergency: 999

Minicom

(Textphone for use by the hard of hearing and speech impaired)
01392 452935

Internet

www.devon-cornwall.police.uk

Crimestoppers

(To give anonymous information)
0800 555111

Your local Neighbourhood Police Team are:

Sergeant Jane Corkhill (Neighbourhood Team Sgt)
Jane.Corkhill@devonandcornwall.pnn.police.uk

PC Rachel Ward (Neighbourhood Beat Manager)
Rachel.Ward@devonandcornwall.pnn.police.uk

PCSO Stacy Thorn (Police Community Support Officer)
Stacy.Thorn@devonandcornwall.pnn.police.uk

PCSO Paul O'Dwyer

(Police Community Support Officer)

Paul.ODwyer@devonandcornwall.pnn.police.uk

The Neighbourhood Team can also be contacted via the general enquiry number listed above.

JOINT POLICE/COUNCIL SURGERY: MAY

Thursday 6th and Thursday 20th
from 11.00 am – 12 noon at The Parish Office
6 Modbury Court, Modbury

Run by PC Rachel Ward
Parish Clerk Mr David Hansford
and Police Community Support Officer, Stacy Thorn

MODBURY OIL GROUP



This bulk buying scheme ensures members are able to obtain domestic heating oil at a very competitive price. If you live in or near Modbury and are interested in joining please contact:

Peter Preston

By e-mail at: prestons@onetel.com
or by phone: 01548 831324

CPRE and Mole Valley Farmers BEST KEPT VILLAGE COMPETITION 2010

Yet again the Modbury Society have been asked by the Parish Council to enter this competition on their behalf. Last year Modbury finished right in the middle of the results, but we did get more marks than the previous year. All villages were judged once in May and half again in June with the final round villages being judged for a third time in July/August.

The judges are looking for:

- Absence of litter and unsightly refuse dumps on the verges;
- Condition of village greens, playing fields, school yards, public seats and noticeboards;
- Condition of public and private buildings, gardens and allotments;
- Condition of church yards, cemeteries and war memorials;
- Condition of public halls, sports facilities and car parks;
- Cleanliness of public toilets and telephone kiosks;
- State of footpaths, stiles, field gates, signposting, ponds and streams;
- Condition of commercial and business premises, including advertisements and other signs;
- Initiative in the care of the environment of the village;
- Evidence of community spirit and usefulness of Village Map.

Please, if you have any involvement - and we all do for at least our own patch - could you do what is necessary to bring us up to tip top condition so that we can move up, at the very least, the table of results.

One of the areas where **you** can help would be to keep the pavements in front of your house litter and weed free. If you have an area where you visit regularly e.g. The Memorial Hall playground, the Sports and Recreation Ground, any of the footpaths, the car parks etc, please help the town's entry in the competition by picking up any litter or asking us for help in cleaning up the space.

If you see an area of the town which could let us down, please contact me on 830193 or nicky.shepley@hotmail.co.uk and we'll see what we can do to improve it.... THANK YOU

Nicky Shepley, Hon.Sec. Modbury Society

THANKS

The Churchwardens at St George's would like to thank all the people who generously gave money to the church in memory of Pearl Furneaux and Ethel Green.

We know that times are tight and we appreciate your kind donations. St George's, like all churches, always needs help to keep going!

MODBURY FIRST ASSOCIATION PRESENTS....

Achieving Affordable Housing the local way

Following his article in the Western Morning News, Robin Hogg, Chairman of the CPRE, will talk about the Village Initiative scheme for delivering affordable housing. We will also hear about the Local Lettings scheme.

**Tuesday 18th May 2010 at 7.30 pm
In The Modbury Inn**

This is the second of a series of talks - on local community solutions for sustainable futures - which we hope will inform future planning for Modbury. The talk is for anyone who is interested. If you want to attend, or simply want more details on this and future events, please contact Lindsay Ward at trevor.ward@tesco.net. I will need to confirm numbers, so please let me know by Friday, 14th May if you intend to come along.

We are aiming to hold a master planning session for Modbury's future. Please e-mail me for further details of the event.

Lindsay Ward

*Modbury Tourist Information Centre
01548 830159*

Spring/Summer Opening Times

Monday to Saturday 10am – 1pm

**From 22nd May 2010
10am – 5pm**

What to do & see in May in Modbury and the South Hams

Saturday 1st – Sunday 9th Modbury Fair/ Through the Decades (Full programme of events available)

Saturday 1 st – 31 st	Art at Delamore
Saturday 1 st	Modbury Harriers Point to Point
Saturday 1 st – 9 th	Plymouth Barbican Jazz & Blues Festival
Sunday 2 nd	Blackawton Worm Charming
Friday 7 th – 9 th	Dartmouth Music Festival
Wednesday 12 th	See the Cirl Bunting/Snapes Point Salcombe
Saturday 15 th	Dawn Chorus at Greenway
Tuesday 18 th	Horsewise/Bearscombe Farm
Friday 21 st	Overnight Under the Stars, Wildlife adventure for families at Wembury
Saturday 22 nd	Hidden History of Kingston/Robert Waterhouse
Thursday 20 th - 22 nd	Devon County Show Westpoint
Saturday 22 nd	Lord Mayors Day Plymouth
Sunday 23 rd	Voyager Canoe Races and Beer Festival/Malsters Arms Tuckenhay
Friday 28 th	Discover Butterflies and Blennies/Wembury
Friday 28 th	Dartmouth Galleries Week
Friday 28 th - 31 st	Totnes Open Studio Art Trail
Saturday 29 th	Celebrating Holbeton's History/Flete Est Walk
Saturday 29 th	Secret Slapton, Wildflower Walk
Sunday 30 th	Plymouth Half Marathon

For further details of all these events (and more) please call in to the Information Centre

Sue Birch

SCHOOL REPORT

LEVEL PLAYING FIELD

Modbury Primary is very used to life without a level playing field and generally manages perfectly well. But the inequalities of school funding are proving an uphill battle, even for our resourceful school.

Every pupil in Devon is being short changed by hundreds of pounds each year. The national average funding per pupil is £4, 217 whereas Devon schools only receive £3,842. That is £375 less annually to fund their education. Our children are even further adrift from those on above average funding.

Costs for schools are similar across the country and staff pay is set nationally. If anything, running costs such as transport and fuel are higher in this area than elsewhere. At a time when the school is having to let good teachers go because of lack of funding, your support is more important than ever.

You don't have to be a parent or even connected to the school to have your say. Please sign the petition by going to: <http://petitions.number10.gov.uk/handsup4schools>.

The petition, like all others, has been suspended for the duration of the General Election but will be up and running again as soon as the new government takes office. The deadline for signing is October 10th. Adding your name just takes a couple of minutes and, who knows, may even make a difference.

JOLLY HOCKEY STICKS

On a brighter note, congratulations to one young man who is succeeding in his goals, irrespective of whether the playing field is level or not. Daniel Smith, from Year 6, has won a place in Devon's under 12 hockey team. He has been a great sporting asset to the school and it's good to know that his ability has been recognised further afield.

CHANGING OF THE GUARD

There was a big welcome for Mrs Garnett who returned to school this term following her maternity leave. As a result Miss Elliot has moved on and will be taking up a post in Yealmpton. The school also said farewell to Mrs Andrew at the end of last term. She had been with the school for nearly ten years and best wishes go with her for health and happiness in the future.

BAZAAR FACTS

Thanks to everyone who helped run the Easter Bazaar, and thanks to those of you who came to browse and buy. The event raised £250 for the school which is a handy sum for a few hours' work.

On a related theme, help is needed to run the school's tombola stall at the May Fair on May 8th. If you can donate an hour or so of your time from 9am onwards, it would be much appreciated. There will also be a mufti day to bring in items for the stall and it's worth noting that, even though mufti days can come as an unpleasant surprise at ten to nine on a Friday morning, each one raises around £100 for the school so is well worth doing.

A PASSION FOR FASHION

Modbury's elite models are being tempted out of retirement with a cutting edge, one-off fashion show being held to raise money for school funds.

So come and update your summer wardrobe from the selection of high street and boutique clothes which will be on display. It's a fun evening out and has been an excellent fundraiser in the past.

The show is at the Memorial Hall on Tuesday, June 15th. Doors open at 7.30 and the show starts at 8pm. Tickets are £5 each and will be available from PTA reps.

Ellen

WHY IS OUR CHILDREN'S EDUCATION WORTH LESS THAN OTHER CHILDREN IN THE COUNTRY?

Following the recent news that Modbury Primary is about to lose a valued teacher because of a drop in pupil numbers (resulting in a drop of Government funding), and as I have a daughter at the school, I feel compelled to put pen to paper.

Devon is the 148th lowest funded out of 151 education authorities in England. The national average currently stands at £4,217 per child whereas our children receive £3,842 per pupil which means that every pupil in a Devon school is effectively worth £375 less than the national average amounting to some £35 million less funding for **our children's education**.

This seems particularly unfair when we consider that all schools face similar costs wherever they are; staff pay is set nationally not locally and Devon schools often pay higher energy bills than other parts of England.

Whilst all schools continue to strive to meet Government set targets and in Modbury Primary's case we should be very proud of our 'Outstanding' OFSTED status, I am at a loss to understand how the Government expects them to maintain such high standards when we have to lose teachers through lack of funding. If Modbury Primary was located in another county they may well not be facing the loss of a teacher. I am afraid this is another case of the 'postcode lottery'!

What can we do? Get behind the Devon County Council supported campaign called 'Hands Up for Fairer School Funding' and sign their petition to the Prime Minister. It is really easy just log on to:

www.petitions.number10.gov.uk/handsup4schools
and follow the very straightforward instructions.

I have also managed to acquire a supply of posters and leaflets so if you feel you could help to spread the message please contact me – Liz Edwards – 01548 830910.

Surely our children deserve fair funding!

Liz Edwards



MODBURY LOCAL HISTORY SOCIETY

The last meeting in our current series of talks took place on April 14th. Once again we filled the library in Flete House.

Unfortunately the planned speaker was unavailable so we were pleased when our President, Philip Andrews, kindly offered to give us a talk about the Battle of Trafalgar. This was a subject which had been researched by Philip on the occasion of the bicentenary of the battle in October 2005. The Modbury Branch of the Royal British Legion held a Celebration Dinner then which Philip organised and over 100 guests attended. The venue was the White Hart Assembly Room.

The talk included many facts and figures which were illustrated by a collection of historical documents which we were able to peruse. It was interesting to learn that Admiral Nelson was highly respected by all the ratings and officers who served under his command. His daring and decision made him a notable commander. He lost his life during the Battle of Trafalgar.

Derek Andrews (not related to Philip) thanked Philip for reminding us about the great Trafalgar Victory in 1805, a period in history which must never be forgotten.

The President proposed a vote of thanks for the Flete House Management (David and Adrian), also Bob Perrin was thanked for all his help. We hope to return to Flete in September when we begin our next series of talks.

Meanwhile we are planning our Summer Outing – details will appear in the June Messenger.

WATCH THIS SPACE!

David Mitchell



The Royal British Legion Modbury Branch

The next General Meeting will take place on Monday 7th June in the Modbury Club, commencing at 7.30 pm.

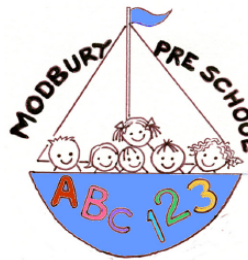
At this meeting David Scott will be relating some of his experiences during his service in the Royal Navy.

New members welcome.

David Mitchell

POPPY APPEAL FUNDRAISING

Look out for our stall at the Modbury Fair Street Market on 8th May.



FULL DAYCARE 5 DAYS A WEEK

**Outstanding OFSTED Report
Among top 3% of country!**

**Your 2½ - 5 year old can now
attend preschool all day**

**Toddler Group Thursday
1.15 - 3.45 pm, all welcome, with
parent/adult**

**2 year olds are welcome
Tuesday to Friday afternoons
Please phone or drop by to enquire
about sessions to suit your
needs**

**Modbury Preschool
Back St, Modbury
01548 831477
Registered Charity
No.1039616**

EXETER RACECOURSE

DEVON LIFE LADIES' NIGHT WITH SIMON WEBBE SINGING LIVE AFTER RACING

Tuesday, May 4

For water aid charity fresh2o

*The fashion and social highlight
of the year!*

£1000's of prizes

*Tickets £13 or £18, 10% discount
if booked on-line or call the hotline*

0844 5793005

www.exeter-racecourse.co.uk

Call 01392 832599



MODBURY SILVER THREADS

Day Trip by coach to Looe and Polperro
on Tuesday 18th May
Starting at Modbury Post Office at
10.00 am then on to Champernowne
and Brownston Street for pick-ups

The cost is £11 per person
payable on booking.

All details from:

**Liz – 01548 830313 or
Zena – 10548 830923**

Everyone welcome
Please join us for a lovely day out

Our next friendly get-togethers at the
Modbury Club are:

**Tuesday 27th April and
Tuesday 11th May
at 1.45 pm**

Please come along for a chat, play
cards, quiz and bingo

Everyone is made welcome

RUNAWAY LANE – A REPLY

I would like to reply to Roy Sims's article about Runaway Lane (April Messenger).

It is designated as an Unclassified County Road (UCR, a highway open to all road users with a road legal vehicle) and as such its care and maintenance is in the hands of Devon County Council's Highway Department. They are always short of funds to maintain even the paved roads, so unsurfaced roads drop off the bottom of their list, although recently they have organised and funded some urgently needed tree surgery. These UCRs are not part of the Parish Paths Partnership remit, but Runaway Lane and Rogues Roost have been included unofficially in Modbury because they form an integral part of our path network.

10 years ago Runaway Lane was almost impassable, with deep mud in winter and a mixture of mud and overgrown vegetation in summer. With a lot of local effort from work parties and grant funding from various sources to finance contractors, the lane is as we see it today. Considering it is the end of the winter, it is in extremely good, useable condition. As good as any Green Lane in Devon and better than many!

There are many factors causing damage to the lane. The main one is probably the climate, with erosion caused by water run off and soil washing down from the fields and the banks. This is not helped by the rabbits, badgers, horses, children building dams using the road surface stones and even trees falling naturally.....and of course bicycles, motor bikes, and 4x4s.

Intimidation is an important point that Mr Sims does not mention. Large 4x4s and noisy motor bikes are very intimidating but so are bicycles, horses and even groups of teenagers (who are known to congregate in the lane). The degree of intimidation is largely due to attitude and approach on both sides.

In summary – the condition of Runaway Lane, at present, is generally good. Motor vehicles are only a contributory part to the wear and tear and at the moment not a major one. The lane is a Heritage Site but only in the same way that Church Street is, in that they are also part of a living, working environment rather than museum pieces. The condition of the lane is subject to regular review, much routine maintenance and periodic remedial work.

Runaway Lane is an asset and facility for us ALL to use sensibly and to enjoy – mindful of others enjoyment – and if that is done, there is no call to try and change its status.

Michael Oakins

MODBURY FAIR EVENT

Thursday 6th May

Devon Rural Archive

Shilston Barton - 7.0pm

MODBURY HISTORY SOCIETY

**Lt Commander Philip Andrews MBE RD
will give a talk about the "Battles of Modbury"**

This will be preceded by an introduction to the role and function of Devon Rural Archive

A presentation will be made of the History Society Website: 'The Unique Heritage of Modbury'

Non Members very welcome - £2.00 entrance
Refreshments provided

Contact: Roy Sims 01548 830530

MODBURY FAIR 2010



Modbury Gospel Singers will be back with another programme of Gospel Songs on
FRIDAY MAY 7TH AT 8.00 PM

We hope to be back in The White Hart. If not, it may be The Exeter Inn garden or the Memorial Hall (if wet)
Watch the posters!

If you enjoy a sing-a-long then you'll enjoy these joyful songs, and maybe we can teach you one or two new ones.

Please come and join us..... Suitable for all the family
Retiring collection for Fair charities

Gill Miller-Williams

THE MODBURY PLAYERS

**WILL BE STAGING AN
OLD TIME MUSIC HALL**



At 7.30 pm

Thursday May 27th

Friday May 28th

Saturday May 29th

In the Memorial Hall

**Proceeds for St Luke's Hospice
Come and enjoy an evening of comedy, music
and melodrama**

**Tickets from Pickles £8.00
Bar available**



Sagas from the Soil

Chapter 3.....May 2010



Well; the rain dances worked and the plots have had a great soaking! As well as Mother Nature's contribution of precious precipitation we have had the generous donation of a roll of alkathene pipe from Bill Cole to help along our own irrigation project. This, along with the grants kindly made by Modbury Parish Council, the Town Improvement Fund and the members of MAA, means that South West Water can now be primed to connect the allotment site to the mains water supply. Bill's splendid pipe can then be run in a trench along the length of the site serving 3 standing taps making the nurturing of our crops so much easier. Once again, we are truly grateful for the support from the community of Modbury - the Hoover Dam Project this may not be, but, to the members of MAA, it is equally significant!

One of the other important ingredients for a healthy harvest of fruit, veg. and flowers is manure. A splendid, steaming pile of this much needed fertiliser has been donated by Tom Henty - courtesy of the healthy digestive systems of his herd! All in MAA are thankful and we are especially enjoying the work-outs we are getting barrowing it to our individual plots!

The raspberry canes, fruit bushes and young plants that are now embedded and mulched will thrive and flourish thanks to these further additions to the site - and, luckily, the Easter Bunny left our crops un-munched!

MAA

MODBURY SOCIETY IN JEOPARDY NO MORE

Before the Modbury Society AGM on 7th April there was a real possibility that because the existing Officers and Committee Members were standing down and the majority were not offering themselves for re- election (age plays its part) no replacement committee might be forthcoming and the Society would have to be wound up. I am delighted to report that, at that AGM, a new committee was elected. It is: Chair – Nicky Shepley, Vice Chairman – Brian Weeks, Hon. Treasurer – Frank Mullery, Hon. Secretary – Burda Gage, Membership Secretary – Mary Rose Rogers, Member – Naomi Ainsley, Member – Sally Hosking and Member- Peter Hyde. The Society is therefore in jeopardy no more, at least for another year.

The Society is 39 years old this year. We can proudly reflect on the many community events, publications, visits, summer parties and particularly successful planning consultations the Society has engaged in and I am privileged to have been its Chairman. Time now for Change – the rallying call at all elections. Not only change but renewal and resurgence. Nicky Shepley the new Chairman brings with her a wealth of experience in local affairs having been for three years Chairman of the Parish Council, two years Vice Chair, as well as Co-ordinator of the Fair Committee for two years. She will lead the Society I know with great assurance ably supported by her new Officers and Committee Members.

But perhaps just as important, if the Society is to thrive, we need new and younger members. Membership is open to all who are interested in the aims of the Society.

Roger Gage
Retiring Chairman

ADDENDUM TO THE ABOVE....

Yes, we are no longer in jeopardy but before we move into our next phase, it is only right that we acknowledge the work of the previous Chairman and our going committee members. Roger Gage has for many years been our hardworking chairman. He has represented many enquiries on the Society's behalf and over the years continued to follow and lead the committee in the ideals set out in the constitution. We shall miss him *enormously* and are grateful for all the work he has done for the town. The other outgoing committee members we must sincerely thank are Phil Andrews, Margaret Barnett, Rodney Bomford, Peter Lake, Ruth Robinson and Derek Smith, all of whom have given valuable time and effort to the aims of the Society. Our next event is to provide Cream Teas after the Walks and of course the Treasure Hunt.

We look forward to seeing you at the Fair, with new members always welcome.

Nicky Shepley, Chairman Modbury Society

BEFRIENDING IN MODBURY

In such a beautiful area as this, it is often difficult to imagine the hardship and struggle that some people are going through, but it is often a surprise to find out how much we can help.

Through its work with NHS Devon's Complex Care Teams, South Hams Community & Voluntary Services (South Hams CVS) has found that there is a great need for volunteers to help other members of the community, with simple tasks such as sitting, shopping, taking people to the shops and hairdressers, perhaps change library books, walk the dog etc.

Schemes which are supporting volunteers to do this are working very well across the South Hams area. There is Dartmouth Caring, Totnes Caring and Saltstone Caring in Kingsbridge and then to the west of the area, Ivybridge Caring are just off the ground and Brixton and District are recruiting volunteers. Therefore there is a gap from the edge of Aveton Gifford to Yealmpton without such a service.

Preliminary discussions have indicated that the idea of a 'befriending' scheme in Modbury would be well supported and could possibly run in conjunction with Modbury Caring which is the excellent, well established scheme in this area, but who are restricted to taking patients of Modbury Health Centre, to and from medical appointments.

Do you know anyone who would benefit from such a scheme? Do you feel you could volunteer to help? Do you think you could be on a steering Committee or are you willing to help co-ordinate such a venture. If so please ring Modbury town clerk David Hansford on 01548 830222 e-mail modburypc@tiscali.co.uk. Any thoughts you have on this matter would be very much appreciated.

Jill Davies, Chief Officer, Modbury Caring

THE GREEN BUDS OF MAY

Whatever colour the next Government turns out to be there is no doubt that, financially, we're in for a difficult few years. So what better time to think about saving both money and carbon?

10%

"10:10" is an ambitious world-wide project with the simple idea that by working together we can achieve a 10% cut in carbon emissions in 2010.

Their aim is that by December, 10 million people, 100,000 businesses, 100,000 schools and 1,000 cities will have cut their emissions by 10%.

There are lots of good ideas on www.1010uk.org which will also save lots of money. Most of them have been mentioned here before but some are more relevant to us in Modbury than others. Fuel and travel costs are relatively high for us, so with a bit of planning, try not using the car at all for one day a week.

Share a car, maybe make the kids walk to school, (like most people over 30 used to!) – more difficult if they go to a school outside Modbury of course.

10%

Or walk to the shops – saving fuel and those iniquitous car-parking fees! 10% easily saved there. Work out the mileages and actual cost – it might surprise you. Shop locally for in-season local produce whenever possible. You'll certainly save carbon and probably cash and time too. Time that can be put to good use growing vegetables or fruit in the garden, patio tub or allotment if you're lucky enough to have one, and before you know it, another 10%.

10%

Keep electricity and gas bills down by using energy efficient products and reducing hot water temperatures and the amount used will save over 10%.

And the extra exercise, warm glow from a sense of responsibility, together with the social benefits of community living in Modbury, will make you and those you meet feel 100% better.

Well, that's the theory anyway. Let's all try it!

Jeff Booth

RETIREMENT

On the 12th April the Modbury traders gathered in the Exeter Inn to acknowledge that after twenty five years of serving Modbury I have decided to hang up my apron and embrace retirement.

It is a decision that is probably overdue but one that I am now ready to make.

I would like to thank the traders for their kind gifts, all the customers that I have had the pleasure to know and serve over the years and finally my wife Christine for all her love and support.

Derrick Wilkinson

MODBURY CARING 100 CLUB

DRAW WINNERS

JANUARY 2010

1 st	Nigel Frost	£15
2 nd	Gillian Riley	£10
3 rd	Ann Williamson	£5

FEBRUARY 2010

1 st	Tony Wardell	£15
2 nd	R Robinson	£10
3 rd	Eileen Lowry	£5

MARCH 2010

1 st	Angie Carson	£15
2 nd	Nikki Mitchell	£10
3 rd	Emma Romney	£5

Winners are posted monthly at the doctors' surgery

MARS 50 – 50 LOTTERY RESULTS

MARCH 2010

1 st : 009	Miss Eckersley	£27.25
2 nd : 097	Jane Binelli	£16.35
3 rd : 104	Brian Pearse	£10.90

To take part in the 50-50 Draw contact the Membership Secretary: Lynn Weeks – 830007

SOUTH HAMS MOBILE LIBRARY

The Mobile Library will be at the following locations on **FRIDAY** mornings

Aylestone Pk (arr 0930 - dep 0955)
Cromwell Park (arr 1000 – dep 1015)
The Green (arr 1020 – dep 1035)

Also on **MONDAY** afternoons
(excluding Bank Holidays) at **Poundwell**
(arr 1600 – dep 1630)

SILENT AUCTION



**Saturday 8 May
From 6.00 – 8.00 pm**

To be held at Ermington Church to raise much needed funds to complete the restoration of the organ
Entry is free and light refreshments will be served

Many varied 'Lots' will be on offer so please do come along and support your neighbouring Church

THE BIG NAKED LUNCH?



No, this is not an invitation to eat sandwiches in the buff but merely a lame opportunity to work a film title into this piece to get you interested in sharing food and philosophy with your neighbours.

You might remember that last September, the lower end of Brownston Street organised a communal lunch - an idea that was inspired by the Eden Project's Big Lunch. They're at it again this year, getting local communities to share food and company on Sunday 18 July.

We had a great afternoon last year; most of the street came; the food was superb and the company even better. We'll have another stab at it this year on Brownston but why not do the same for your street?

There's nothing obligatory about the date but neither is there anything obviously bad about it - so we'll attempt to organise Brownston's lunch for that day and we think it'll be great if the rest of the town wants to do the same. It's very easy to organise - and great fun.

For ideas about how and what to do, go to:

<http://www.thebiglunch.com>

Clothes are optional....

Nigel Charles

S
t
G
e
o
r
g
,
S
C
h
u
r
c
h
F
e
t
e

Saturday June 19th

2.00-5.00pm

**In the Vicarage
Gardens**

(in Church if wet)

Fun for all the family

Entertainment

Teas Games Stalls

Big Raffle Draw

More details in next month's issue.

Offers of help appreciated, please contact

Sue Chambers – 831447 or Rachel Taylor - 830021

SAVE RUNAWAY LANE

Last month's Messenger indicated that a Petition was being raised to ban vehicles from using and abusing our Heritage Lane.

We would like to obtain the signatures of any Modbury Parishioner who supports this appeal.

The form below enables you to register your name and address.

- 1.....
- 2.....
- 3.....
- 4.....
- 5.....
- 6.....

Please cut out and return to the Parish Office.

Additional Petition Sheets will also be placed in the Parish Office and the Post Office.

Roy Sims, Modbury Heritage Coordinator

GET YOUR TRAINERS ON GIRLS! WALK, WORK, WALK, WORK.....

Over the past two years the "Modbury Mooners" have raised over £3,000 for Breast Cancer charities.



This May the team, consisting of:

Eileen Berry, Hilary Garry, Ellen James, Steph Rayner and Kate West

will be stomping their way around the streets of London in the middle of the

night wearing lovely decorated bras hoping to bust their target once again.

Every week is a tricky week for getting out and about - what with jobs, college work and of course children (especially at weekends and in the holidays) not to mention all that chocolate to be eaten over Easter..... Still, the team have managed a bit here and there and most have clocked up anywhere from 6 to 20 miles three times a week during some lovely sunny walks,

some terribly wet walks and some really cold walks, all around our beautiful countryside.

There've been loads of memories for them as to why they're doing this - it's for charity, as well as fun and fitness. We all know someone who's had breast cancer and the Modbury Mooners want to do something about making their lives better, as well as preventing it all together in the future.

Eileen Berry, one of the team's members commented recently "It's a busy time for all of us with new work ventures, more work, new college work, more college work and regular family life to care for! But we're up for the challenge and are training whenever we can with whoever's available".

Look out for the five out on the roads around Modbury, come rain or shine and if you'd like to wish them well and sponsor the team their website address is:

<http://www.walkthewalkfundraising.org/modburymooners>



BISTRO 35

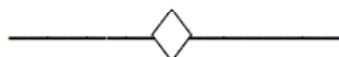
Licensed Restaurant and Wine Bar

SUMMER OPENING TIMES

Tuesday to Saturday Bar 6 pm – 11 pm
Restaurant 6 pm – 9 pm

Sunday Bar 5 pm – 10.30 pm
Restaurant 5 pm – 8 pm

CLOSED ON MONDAY



The Bistro is available for small conferences, Luncheons, Weddings and Christenings Tuesday to Friday daytimes and Sunday Lunch
Maximum of 40 people
Rear Courtyard available

MODBURY (01548) 831273
35 CHURCH STREET MODBURY DEVON



South Hams Veg Boxes from the Nearly Naked Veg Company!

Veg grown *by us*, picked *by us*, then delivered *by us* to your home.

Always grown without any unnecessary chemicals.

You can order **on-line** as a one-off or set up a regular order.

Call Sam for more info or to place your order over the phone.

Tel: 01364 646106
info@nearlynakedveg.co.uk
www.nearlynakedveg.co.uk

KITCHENS BY
DeZine

Form and Function
Working in Harmony



A down to earth approach with a truly bespoke solution
Beautiful kitchens fitted with a reputation you can trust

Call or email us to discover the potential of your kitchen

t. **01548 830 819** f. **01548 831 519**
27 Church Street □ Modbury □ Devon □ PL21 0QR

Info@kitchensbydezine.co.uk
www.kitchensbydezine.co.uk

G H W Rosevear & Co

Chartered Secretaries and Incorporated Financial Accountants
In Public Practice

Ready for Recovery?

Have you weathered the storm of recession or are you starting a new business?

Consult us for the way forward!

Now is the time to prepare for the future. Get working on those critical elements such as

- Budgets and Cashflow
- Working capital facilities
- Integrated business plans

Consult us for the way forward!

We can help you prepare your integrated business plan; and assist you to secure adequate working capital from your bank.

Consult us for the way forward!

We will prepare your accounts and work out your tax liabilities

We can also provide you with Book-keeping, Payroll Services and VAT Returns

Office Hours

G H W Rosevear & Co
3, Modbury Court, 32 Church Street
Modbury, Ivybridge, Devon, PL21 0QR

9¹⁵ a.m. - 6 p.m.
Monday - Friday
Weekends by appointment

Tel: **01548 831427**
Fax: **01548 830977**
Email: george@holbrookass.com
www.accountantsouthdevon.co.uk

LIFE SMOOTHERS

TO MAKE LIFE RUN MORE SMOOTHLY

Caretaking / key holding

Weekly property checks

Liaising with tradespeople/services

Spring cleaning— pre /post move cleans

Small decorating work

Year round garden care service

Holiday care – feed pets, watering garden, tubs, indoor plants etc.

Help at home

Whatever the task – just ask!

We offer a year round professional service

Tel: **01548 550538** or **07588604387**

Or email: lifesmoothers@aol.co.uk



Gas Works & Servicing
Energy Efficient Heating
Bathrooms & Showers
All Hot Water Systems
Maintenance & Repair
Eco Energy Systems



Based in Modbury



Contact us now for a free estimate:
Tel: **01548 830918** or Mob: **07863 128489**
info@wrightplumbing.co.uk www.wrightplumbing.co.uk



Mrs C V Harrington MCSP; MMAPC

Chartered Physiotherapist

Registered with the Health Professional Council
And all Health Insurance Companies

DOMICILIARY SERVICE / HOME VISITS



Tel: 01548 810023
Mobile: 07776393927

Member of the Organisation of
Chartered Physiotherapists in Private Practice



EDEN TREE & HEDGE CARE TREE SURGEONS

- All tree surgery under taken
- (Qualified Tree surgeon NPTC qualified)
- Felling/reduction/pruning
- 24 hr call out on trees
- Lawn mowing / strimming
- Hedge cutting & laying
- Garden clearances
- Chipping and chainsaw work
- **Fully insured to £5 million**

Logs and wood chip for sale all year round
for a free friendly quote call Adam Sloman on
01548 830611 or (07760 324419)



MARTIN LEY PLUMBING & HEATING

- Oil Installations,
Servicing & Repairs
- Unvented Cylinders
- Bathrooms & Showers
- General Plumbing

Tel: Modbury 01548 830609
Mobile: 07811 934551

ROBERT EASTON

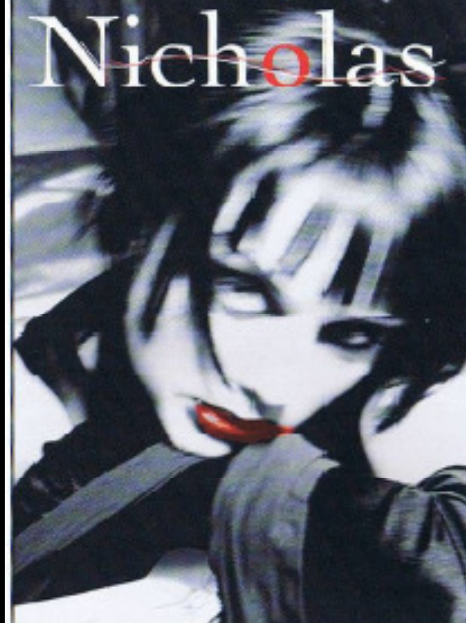
Bespoke painter and
decorator

Internal and external
Painting and wallpapering
Time served tradesman
20 years experience
No job too small
Discounts for OAPs
For that old-fashioned service

Tel: 01752 256674 or visit for
references

www.robertleaston.co.uk

31 Hillside Ave. Mutley, Plymouth PL4 6PR
Mobile: 07771 614856



Hairdressing

GOLDWELL

Hair Cosmetics

LAMOUR

Hair Care Products

ghd

a new regimen for hair

Beauty Therapy

Dermologica Face and Body Treatments
Holistic Massage
Slimming Wrap
St. Tropez Tanning
Eye Lash Perming & Tinting
Waxing

dermalogica

Early morning or late evening appointments on request

London House,
Church Street, Modbury, S. Devon
Tel: (01548) 830152

Wild Goose

34 Church Street,
Modbury, PL21 0QR

01548 830715

Stockists of Rowan &
Colinette wool/patterns

English Blue & White China

Various Range of jewellery

Fashion Accessories

Pine Furniture

THE GARDEN PROJECT COMPANY

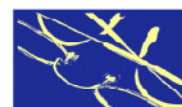
PROFESSIONAL LANDSCAPE
CONSTRUCTION

Brick, Wood & Stonework
Decking, Fencing & Turfing
Pavios, Pergolas & Ponds
Garden Buildings
Planting & Maintenance
Groundworks

01548 852436

07967 746361

www.gardenprojectcompany.co.uk
Established 17 years



NIGEL FROST OPTOMETRIST

3 Chene Court
Modbury
Devon

Tel: 01548 830944

'Look no further'

NHS/Private Eye Examinations
Everything from designer sunglasses to
low cost lens and frame packages
Contact Lens Specialists

Nigel Frost BSc(Hons) F.C.Optom
Angela Hickman BSc(Hons) F.C.Optom
Kathryn Poole BSc(Hons) M.C.Optom

KINGSBRIDGE EYE CARE
No 1, The Promenade
Kingsbridge
Tel: 01548 856854

SALCOMBE EYE CARE
84 Fore Street,
Salcombe
Tel: 01548 843207

Accountancy Services

- Accounts
 - Tax Returns
 - Start-ups and Business Plans
 - Bookkeeping, Payroll & VAT
 - Fixed fees in advance
 - Self-Assessment and CIS
- Contact Alex Smith (ACA) on

01752 551 888

To arrange a free initial, no obligation meeting



ANTIQUUE FURNITURE REPAIRS & RESTORATION

Veneer Repairs, French Polishing
Hand stripping & Re-finishing
Wood-turning

CANEWORK & RUSH SEATING
Danish Cord & Seagrass



Guye Roberts
MASTHEAD
Parsonage Road
Newton Ferrers
Plymouth
DEVON PL8 1AS

01752 872805

Website : www.guye.co.uk
Email : guye@guye.co.uk

MODBURY TIDDLERS

A Community Run Group for Small People aged 0 - 5 (and for the people who wipe their noses!)

PLAYTIME FOR THEM!
COFFEE AND A CHAT FOR US!



Fridays 9.30 - 12 noon £1.50 per child

@Modbury Memorial Hall

Enquiries ring Angie: 01548 831139

ROCKSHOP

Fridays 7.00 - 9.00 pm

Modbury School Hall

10p Entrance

Younger Group Ages 8 - 11

Older Group Year 7 Upwards

Hockey, Basketball
Giant Skipping, Football
Craft, Drama, Tuckshop
and also for the older group: Community Activities, Occasional Discos and Live Bands
A Christian Youth Group
Established in Modbury
For over 30 years

EVERYONE WELCOME
Contact David 831589
or Simon - 830857

SHORT MAT BOWLS

The Modbury Short Mat Bowls Club

EVERY WEDNESDAY

7.00 pm at the
Memorial Hall

New members are welcome.

Come along and try it - it's fun

Pauline 830133

MODBURY BADMINTON CLUB

Memorial Hall

Tuesdays 7.30 - 10 pm

*New members always welcome.
For further information please contact:*

Gill Jolly

Tel: 01548 831263

AQUA HAIR DESIGN



WHITE ICE is a complete range of cleansing, conditioning and treatment products with new and advanced formulations for all hair types.

Late opening
Thursdays - Fridays
No 7 Modbury Court
01548 831260



MR BUILDER Co.

A friendly, honest and reliable service.
Fully insured and guaranteed.
Transforming any part of your home

'from foundation to decoration'

Call Today:

Office: 01548 831303 (Modbury)
Mr Builder James: 07825 214368
Mr Builder Paul: 07974 508947
E: jamesandpaul@mrbuilderco.com



TALL ORDERS

Landscaping & grounds maintenance

~lawn mowing ~hedge trimming
~brushcutting ~clearance....

HARD LANDSCAPING

~fencing ~decking ~patios
~natural stone walling

CHAINSAW & TREE WORK

UNDERTAKEN

Chipper & Mini-digger available
logs supplied

For a friendly free quote call James
Tall on 01548 831139 or mobile
07967258318 (fully insured)

Advertising Tariff for The Messenger

In order to support the publication of The Messenger, advertising relating to business or of a commercial nature will be charged at the rates shown below.

Information for community use will continue to be published free of charge.

Single Insertion

1/9 th page	£10.50 per insertion
2/9 th page	£21.00 per insertion
1/3 rd page	£31.50 per insertion
1/2 page	£42.00 per insertion

Three Insertions

1/9 th page	£8.40 per insertion
2/9 th page	£16.80 per insertion
1/3 rd page	£25.20 per insertion
1/2 page	£33.60 per insertion

Six Insertions

1/9 th page	£6.30 per insertion
2/9 th page	£12.60 per insertion
1/3 rd page	£18.90 per insertion
1/2 page	£25.70 per insertion

Eleven Insertions

1/9 th page	£4.20 per insertion
2/9 th page	£8.40 per insertion
1/3 rd page	£12.60 per insertion
1/2 page	£16.80 per insertion

Artwork of good black and white copy to be supplied. **Payment must be made in advance.**

Cheques should be made payable to 'Modbury Parish Council' and sent to The Parish Office, 6 Modbury Court, Church Street Modbury PL21 0QR.

For further information please contact David Hansford on 01548 830222

MODBURY PARISH COUNCIL PARISH OFFICE

6 Modbury Court, Church Street
Modbury
Tel: 01548 830222
e-mail modburypc@tiscali.co.uk

Hours of Business-
Mondays 9.00am – 1.00pm

Parish Surgery
10 – 11 am every Saturday

Planning Applications

Notices of planning applications lodged with SHDC are displayed on the Parish Noticeboard outside the Post Office. Copies of plans relating to these applications can be inspected at the Parish Office during above office hours or when a Councillor is on duty.

Contacting Parish Councillors

Parish Councillors attend the Parish Office, on a rota basis, on Saturday mornings from 10.00 - 11.00am. Should you have any parish matter you would like to discuss come along to the Office at 6 Modbury Court. You can also call in to the Office on Mondays from 9.00am - 1.00pm and speak to the Clerk, David Hansford.

He can also be contacted by phone on 01548 830222 or e-mail at modburypc@tiscali.co.uk

At all other times you can leave a message either by phone or e-mail (see above) or alternatively you can write a letter or speak at the public forum held at the beginning of each monthly meeting of the Parish Council, held on the second Monday of each month at 7.00pm in the annexe of the Memorial Hall.

MESSENGER CLOSING DATE

*The closing date for the
June Messenger is
16th May 2010*

Please send all copy, by e-mail to prestons@onetel.com or deliver to the **Parish Office** (please note that all advertisements should be submitted **ONLY** via the Parish office – see below).

Payment for all advertisements must be made in advance. Cheques should be made payable to 'Modbury Parish Council' and sent to The Parish Office, 6 Modbury Court, Church Street, Modbury PL21 0QR. For further information please contact David Hansford on 01548 830222.

The Modbury Messenger is published by The Modbury Parish Council and is printed by SHDC, Follaton House, Totnes.

The views expressed in the Modbury Messenger do not necessarily represent those of The Modbury Parish Council.

SOUTH HAMS DISTRICT COUNCILLORS

Our South Hams District
Councillors are:

Geoffrey Fielden – 830916

or

[councillorfielden@
southhams.gov.uk](mailto:councillorfielden@southhams.gov.uk)

Mark Lawrence – 830423

or

Cllr.Lawrence@southhams.gov.uk

Our representative on
DEVON COUNTY COUNCIL
is William Mumford and he
can be contacted on:

01752 873002 or

william.mumford@devon.gov.uk

PERSONAL ANNOUNCEMENTS

(Births, Deaths, Marriages, Thanks etc)

£5 per insertion - maximum 50 words

(Subject to available space)

The Editorial Committee reserve the right to précis/abbreviate any copy submitted for inclusion in the Messenger.

Through the Deck Aids

**An exhibition with a maritime theme
by the people of Modbury in St. George's Church**



Thurs 6th & Fri 7th May 10.30am - 4.30pm
Saturday 8th May 10.30am - 5pm
Sunday 9th May 12.30 - 4.30pm



May Fair Service with a nautical theme at 11am



Free but donations to Modbury May Fair please
Refreshments available



Yealm Community Sailing
(formerly Newton and Noss Optimist Sail Training)

SAILING TUITION

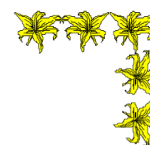
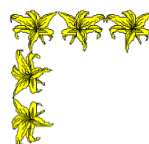


Would you like to learn to sail on the
River Yealm in an Optimist Dinghy?

Yealm Community Sailing is offering Sail training for
children aged between 8 and (approx) 13 yrs in
blocks of 4 or 5 sessions between May and Aug 2010.

Cost is £4 (£2 conc.) per session.

If you would like to find out more, including dates of
courses, please email janesibson@yahoo.co.uk (best)
or alternatively phone 01752 873260



**OPEN
GARDENS
Sunday July 11th**

**IN AID OF
ST GEORGE'S CHURCH**

If you would be willing to open
your garden for the afternoon
please contact

Richard and Rachel Taylor
830021

