

# Modbury Messenger



## MODBURY - THE FIRST PLASTIC BAG FREE TOWN IN DEVON, THE UK, EUROPE .....

Remember May 2007 and how it felt as a town - what an achievement, what a resounding success? Its resonance is still felt today. That is why we have TWO SIGNS AT EITHER END OF THE TOWN! We were proud of our achievement!

Remember the beach clean in 2008, what a community success story, brilliant! What projects have followed? 2010 has just dawned and what now?

We are trying to arrange a variety of fun COMMUNITY events – to raise awareness (NOT FUNDS). However, we would like to involve the whole community - not just the shopkeepers - and as such are holding:

**A PUBLIC MEETING – COMMUNITY IDEAS ON HOW WE CAN GET ‘STUCK IN!’  
EVENT SUGGESTIONS AND LOADS OF ENTHUSIASM  
ON TUESDAY MARCH 16<sup>TH</sup>  
AT THE EXETER INN FROM 6.00PM**

We would also like to broaden our projects, and so we may be known as plastic bag free, but now it's not just about plastic and it's not just about bags it can be anything you think would be fun sustainable projects that we can enjoy doing together.

*For questions or suggestions please contact Sue at - The Brownston Gallery on 01548 831338 or [info@thebrownstongallery.co.uk](mailto:info@thebrownstongallery.co.uk)*

### MODBURY'S OFFICIAL PARISH COUNCIL WEBSITE

[www.modburypc.co.uk](http://www.modburypc.co.uk)

Do you have a local business with a website? If so why not have a link on the Parish Website. Contact Jean Carlyle-Lyon at [jean.carlylelion@gmail.com](mailto:jean.carlylelion@gmail.com). There is no charge.

### MESSENGER APOLOGY

In February's Messenger it was stated that John Ellis started delivering Sunday newspapers in 1971 and had now retired after 30 years. The mathematicians amongst you will realise it is actually an amazing **39 YEARS** that John has been delivering the Sunday papers.

**Many apologies John**

## AROUND THE CHURCHES



### St Monica's Roman Catholic Church

St Austin's Priory  
01752 892606

Sundays  
9.00 am Mass  
*Everyone Welcome*

---

---

### Modbury Methodist Church

#### Superintendent Minister

Rev John Beadle  
(Tel 01548 852073)

#### Minister

Rev Gordon Davis  
(Tel 01803 862350)

#### Sunday Services

10.30 am in  
St Monica's Church

This is a small friendly group  
Do come and join us

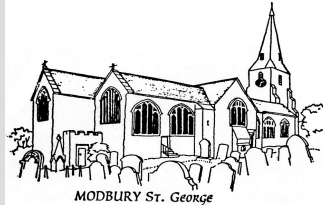
#### March Services

**Sunday 7th**  
Mr Paul Metcalfe

**Sunday 14th**  
Rev Roy Allison

**Sunday 21st**  
Rev John Beadle  
Holy Communion

**Sunday 28th**  
Mrs Vicky Bryan



### St George's Parish Church, Modbury

*Connecting people to God*

#### SERVICES AND EVENTS MARCH

**Wednesday 3rd**  
7.30 pm – Worship Group Practice

**Thursday 4th**  
9.15 am ish – Noah's Ark

**Sunday 7th**  
9.30 am – Holy Communion  
1.45 pm – Team walk on Dartmoor  
(details below)

**Thursday 11th**  
9.30 am – Holy Communion

**Sunday 14th**  
**Mothering Sunday**  
8.00 am – Holy Communion  
9.30 am – Family Service

**Thursday 18th**  
9.30 am – Holy Communion

**Sunday 21st**  
9.30 am – Family Communion

**Thursday 25th**  
9.30 am – Holy Communion

**Sunday 28th**  
**Palm Sunday**  
8.00 am – Holy Communion  
9.30 am – Morning Prayer

**St George's & St Andrew's are  
open every day for prayer**



Have you seen the Ten  
Commandments  
recently re-carved into  
the rocks at Buckland  
Beacon?

It's an easy walk (less than a mile) from  
Cold East Cross Car Park.

Come and join people from the rest of  
the Modbury Team leaving (by car)  
from St George's Church Car Park at  
1.45pm on Sunday 7th March.

## THE MODBURY SOCIETY

is holding an  
**Extraordinary General  
Meeting**

on Wednesday, 10th March 2010  
at 7.30pm in the side room of the  
Memorial Hall

### The Modbury Society in Jeopardy

#### To all members of The Modbury Society

The Society's aims remain the same as in  
the constitution:

- To encourage high standards of architecture and town planning in the civil parish of Modbury.
- To stimulate public interest in and care for the beauty, history and character of the town and its surroundings, including the hamlet of Brownston.
- To encourage the preservation, development and improvement of features of general amenity or historic interest.
- To pursue these ends by means of meetings, exhibitions, lecture and promotion of schemes of a charitable nature.

The current stalwart committee are now coming up to an age where several of them would like to hand on to younger enthusiasts.

We are therefore calling an Extraordinary General Meeting to discuss the Society's future.  
*Nicola Shepley*

## ROCKSHOP

Fridays 7.00 – 9.00 pm

**Modbury School Hall**

**10p Entrance**

Younger Group Ages 8 - 11

Older Group Year 7 Upwards

Hockey, Basketball  
Giant Skipping, Football  
Craft, Drama, Tuckshop  
and also for the older group: Community  
Activities, Occasional Discos  
and Live Bands  
A Christian Youth Group  
Established in Modbury  
For over 30 years

**EVERYONE WELCOME**

Contact David – 831589  
or Simon - 830857

# PARISH PAGES

## PLANNING

**Modbury Parish Council recommended approval and SHDC granted approval for:**

**Modbury Memorial Hall** - Extension and improved disabled access.

**Gate Farm** – Retrospective application for retention of agricultural store.

**Modbury Parish Council recommended approval for:**

**20 Brownston Street** – Listed Building Consent for 60cm satellite dish.

**Modbury Health Centre** – Single storey extension for new consulting room.

**Modbury Parish Council recommended refusal for:**

**Green Vale, Little Stoliford** – Replacement dwelling.

## MOBILE LIBRARY

Devon Mobile Library Services are circulating a survey on how the service can be improved. The survey can be accessed at [www.devon.gov.uk/mobilelibraryreview](http://www.devon.gov.uk/mobilelibraryreview) or you can e-mail comments to [mobiles@devon.gov.uk](mailto:mobiles@devon.gov.uk) or take hand-written comments to any of Devon's libraries.

## CALLING ALL LOCAL SERVICE PROVIDERS

The Parish Council are interested in publishing in the Messenger a list of local service providers who would be willing to provide an 'Emergency Service'.

Plumbers, electricians, builders, etc who are locally based and willing to address emergency problems would be listed with name, trade and contact number in an 'Emergency Call Out' listing to be published each month.

If interested contact David Hansford at The Parish Office. Tel: 830222.

## MARS UPDATE

- Final design plans are being prepared
- We have £90,000 committed by SHDC subject to matched funding
- We have already raised £22,000 locally
- Our target is to raise another £15,000 locally
- **You can help by joining the 50:50 Lottery**  
(Contact Lyn Weeks on 01548 830007 for details)

£140,000

£122,000

£105,000

£90,000



£17,000 TO BE RAISED LOCALLY

£7,000 Pledged by Parish Council

£15,000 banked with MARS

SHDC Grant subject to matched funds

## POLICE CONTACT DETAILS

**Sergeant Jane Corkhill (Neighbourhood Team Sergeant)**

[Jane.CORKHILL@devonandcornwall.pnn.police.uk](mailto:Jane.CORKHILL@devonandcornwall.pnn.police.uk)

Tel: 08452 777444 x4233

**Rachel Ward (Neighbourhood Beat Manager)**

[Rachel.WARD@devonandcornwall.pnn.police.uk](mailto:Rachel.WARD@devonandcornwall.pnn.police.uk)

**Paul O'Dwyer (Police Community Support Officer)**

[Paul.O'DWYER@devonandcornwall.pnn.police.uk](mailto:Paul.O'DWYER@devonandcornwall.pnn.police.uk)

**Stacy Thorn (PCSO)**

[Stacy.THORN@devonandcornwall.pnn.police.uk](mailto:Stacy.THORN@devonandcornwall.pnn.police.uk)

All the above can be reached on 08452 777444  
Extension 4225

Obviously if there is an emergency the public should dial 999

## MODBURY ASSOCIATION OF RECREATION & SPORT

THE  
**ANNUAL GENERAL MEETING**

WILL BE HELD IN

## THE MODBURY INN

ON

**THURSDAY 18<sup>TH</sup> MARCH**

@ 7:30 pm

ALL PARISHIONERS WELCOME

PLEASE COME ALONG AND EXPRESS YOUR VIEWS ON THE FUTURE DEVELOPMENT OF SPORTS AND RECREATIONAL FACILITIES IN THE TOWN

## MODBURY ASSOCIATION OF RECREATION AND SPORT

APPLICATIONS are invited for the post of Honorary Secretary to M.A.R.S. to succeed the present Secretary who is to relinquish this post at the AGM in March.

Full details of the duties can be obtained from the present Secretary but these mainly include calling meetings (approx. 10 per year), producing minutes of each meeting and carrying out any decisions which may have been made by the Committee.

Anyone interested in this post is invited to contact Eileen Berry on 01548 831307 or Mr Peter Watts (Chairman) on 830648 for further information.

## MODBURY PARISH COUNCIL

The  
**ANNUAL PARISH MEETING**

Will be held at

**MODBURY MEMORIAL HALL**

**On Monday 22 March  
At 7.00 pm**

**ALL PARISHIONERS WELCOME**

# MODBURY PARISH COUNCIL'S RESPONSE TO SHDC FOLLOWING THE PUBLIC CONSULTATION MEETING

## Dear Mr Swiss

Following the public consultation on 5<sup>th</sup> February and the subsequent Parish Council meeting held on 8<sup>th</sup> February, we are now responding with the issues raised relating to the sites RA1 and RA2 as well as issues pertaining to other possible sites identified in the Council's Development Plan Planning Document released on 17<sup>th</sup> December. This letter is in addition to the letter that Modbury Parish Council sent to the Forward Planning Department on 13<sup>th</sup> July 2009.

- On 7<sup>th</sup> July 2009, a public meeting was held in Modbury to consult on the SHDC possible development sites to meet housing needs to 2016 and 2026. The Parish Council formally responded to SHDC with a consensus view from the community which favoured infill sites. Consequently the public perception is that SHDC are disinterested in consultation and dialogue and merely going through the motions having already determined the development strategy irrespective of public views.
- The area of Palm Cross Green (RA1) has historically been referred to as a potential area of development and concerns were raised that dialogue had already taken place between prospective developers and the highway authorities as long ago as 2008. This implied that a decision in principle had already been taken by SHDC planners with regard to this site. The area added to the original RA1 site has recently been granted a 125 year lease by SHDC and is not now deliverable for residential planning.
- There was a general feeling that the current approach to the town's requirements was being considered in a piecemeal manner to satisfy an imposed new build housing target. There appears to be a lack of an holistic approach and a lost opportunity to make significant improvements to facilities which would have a long term benefit to the town.
- The issue of 'affordability' was raised both in terms of definition and the realistic expectation that commitments to deliver agreed percentages of affordable housing would be honoured. Past experience has shown that commitments to affordable housing were diluted once the build programme had commenced.
- Concerns were expressed with regard to the implications on the town infrastructure and services with regard to the development at Poundwell (Site RA2). Water table levels and the inadequacy of existing sewerage and drainage systems were also issues. Some properties in low lying areas of the town are prone to regular flooding including discharges from the sewerage plant. Car parking facilities are already constrained and any loss of parking will have serious repercussions for both traders and shoppers. Implications for Tor Homes and the Health Centre were also unclear and a matter of concern. Aside from the above issues relating to Site RA2, the vehicular access is extremely poor.

- There is great concern at the general lack of detail in all the published options. Your response that detailed plans would not be formulated until sites had been confirmed in principle was unsatisfactory.
- The documents circulated by SHDC lack clarity with regard to the boundaries of areas RA1 and RA2, thus making relevant comment difficult. The Tor Homes properties sited at RA2 are occupied by elderly members of the community; their current situation with regard to access to shops, services and the Health Centre is ideal. If it is the intention to replace these with a different type of unit then there are major concerns on the future location of housing facilities for the older population and the means of access to the town centre.

This Council's specific comments on the additional sites are as follows:-

- **Site 13-** Land at Coppers Corner. Not now available as noted above.
- **Site 14-** Palm Cross Green (part). This land is owned by the Parish Council and used by the people of Modbury. It would not be available without further dialogue and a referendum with the public on its future. Any loss in car parking space would have to be replaced by a similar number of spaces.
- **Site 15-** Land to east of Primary School. Access to Back Street is totally unsuitable. The only other access is through the school playing field adjacent to the boundary hedge. This is also impracticable and effectively makes this site 'landlocked'.
- **Site 16-** Land south of Poundwell Street. Tor Homes have shown no interest in developing its properties. Any loss of parking with the development of a town square must be replaced elsewhere. Vehicular access via Poundwell Street is also extremely poor. There is a query whether the commercial development is expected to go below the current car park. This would appear an illogical move.

Submitted for your consideration.

*Modbury Parish Council*

## IMPORTANT NOTE

If you wish to comment on any of the development area proposals it is very important that you put your comments in writing and send to:

SHDC, Forward Planning Department  
Follaton House  
Plymouth Road  
Totnes TQ9 5NE

Although the Parish Council has responded, letters from individuals or groups carry just as much - if not more weight. So whatever your views let SHDC know without delay.



# SCHOOL REPORT

## BEAR NECESSITIES

If you went down to the woods at the end of the last half term, you were in for a very big surprise. Because there you would have found Goldilocks clapped in irons and hauled up in front of a jury of her woodland peers in the show trial of the century.

The Memorial Hall was transformed into a woodland courtroom for the children's expressive arts week which culminated in a performance of Goldilocks and the Three Bears, or rather Roald Dahl's typically skewed take on the children's classic. The Year 6s gave excellent performances in the main parts. Ciara Dudlestone looked startlingly at home in the title role of the (alleged) young hooligan. Jamie Thorns, Evie Byrom and Daniel Smith were excellent as the injured parties and all were well supported by a cast of thousands from further down the school.

## MODBURY'S GOT TALENT

Congratulations to Modbury School Choir and its soloists who did so fantastically well at the Saltash Music Festival last month. The choir won their category and are now the proud owners of a silver cup to prove it. Special congratulations to the young soloists who did so well; Lucy Gill coming first, Jessica Hardy second and Ellen Gill who was highly placed in her category. Many thanks also to Mrs Gill and Mrs Woods whose enthusiasm and expertise has steered the young singers to their success.

## VOUCH FOR THEM

It's that time of year again when amongst all the other things to remember at the supermarket checkout – loyalty card, mortgage, pet insurance, the children – vouchers for schools are on offer.

And Modbury School will be keen to capitalise on any vouchers local shoppers can supply. Over the past few years these schemes have provided plenty in the way of good quality, free equipment for the school. From athletics equipment to a Roman artefacts set, which came in particularly handy for the autumn term topic, the children have had access to a

wide range of learning aids they may otherwise have missed out on.

Last year the school collected 20,000 vouchers. So if anyone at the checkout offers you some tokens, take them and hand them in to the school. They actually do some good.

## COOKING THE BOOKS

The PTA is cooking up a scheme to create a school recipe book, the sale of which would raise money to refurbish the reading corners in every classroom.

Each child has contributed a favourite recipe, complete with illustrations hand drawn by themselves. Hardys Printing & Publishing has offered to produce the book and needs at least 40 orders as a minimum print run. Books will cost £6 each and will make great presents for friends and family. So get your orders in to the school, and make sure that this venture is a real recipe for success.

## DINNER, LADIES? (AND GENTS)

Fed up with relaxed, sophisticated dinner parties where the food is cosmopolitan and the conversation intelligent and cultured? Then indulge your inner child and come to the Modbury Inn for a School Dinner Night.

The evening will struggle to reach the gold standard of melamine plates, congealed semolina and dinner ladies on a mission to make you eat cold, leathery liver and look as though you were enjoying it, but it should be fun all the same. Provided, that is, you sit up straight and eat all your food. And anyone found passing notes under the table will be sent to the head teacher.

This has been very popular in the past, so watch the Friday Flyer for information about tickets and prices. The dinner, which will include a quiz, will be held on Thursday, March 25th, in aid of school funds. St Trinian's dress, optional.

## DATES FOR THE DIARY

Other events on the horizon include the school disco later this month, at which the May Queen will be chosen. Help is needed to run the disco and the sweet shop. Watch the Friday Flyer for information on dates and times.

The Easter Bazaar will be held on April 1st (no, really), straight after the Easter Service. Again, volunteers are needed to run the stalls. And later this school year, the PTA will be holding a fashion show which has traditionally been a popular way to raise money for the school. *Ellen*

## MODBURY TIDLERS

A Community Run Group for Small People aged 0 - 5 (and for the people who wipe their noses!)

PLAYTIME FOR THEM!  
COFFEE AND A CHAT FOR US!



Fridays 9.30 - 12 noon £1.50 per child

@Modbury Memorial Hall

Enquiries ring Angie: 01548 831139



South Hams Veg Boxes from the  
**Nearly Naked Veg Company!**

Veg grown *by us*, picked *by us*, then  
delivered *by us* to your home.  
Always grown without any unnecessary  
chemicals.

You can order **on-line** as a one-off  
or set up a regular order.

**Call Sam** for more info or to  
place your order over the phone.

Tel: 01364 646106  
info@nearlynakedveg.co.uk  
www.nearlynakedveg.co.uk



## MODBURY LOCAL HISTORY SOCIETY

Our meeting on 10<sup>th</sup> February in the library at Flete House was very well attended and we are grateful to the Manager, Adrian, for his efforts in finding enough charis for us all!

The speaker was Reg Hannaford from Torcross who gave a talk about life in the village during the 1930s. The butchers shop is still run by the Hannaford family but many of the other shops have vanished, even the hotel has been made into flats.

Reg recalled by name many of the old businesses and the people who ran them. The main theme of the talk was the 'D Day Evacuation in 1943' which Reg remembers well. The whole area had to be cleared in six weeks to allow a large contingent of American troops to train for the D Day assault.

After the war it took several months to clear all the houses and farms and even now there are places where it is not safe to venture because of the danger of unexploded shells.

Reg answered several questions and was then thanked by our Chairman Mary Timmis for giving us such an interesting evening.

Reg refused to accept any payment and requested that he would like us to send a donation to the Devon Air Ambulance Trust – a cheque for £30 has been sent. Thanks Reg for your generosity.

In March we shall again hold our meeting at Flete on the 10<sup>th</sup>. The speaker will be Felicity Goodall from Kingsbridge. She has written another book 'Lost Plymouth' and will talk about the many changes which have taken place in the city over the last century.

Meetings comence at 7.30 pm. Casual visitors welcome @ £2 per meeting.

*David Mitchell*



## The Royal British Legion Modbury Branch

The next General Meeting will take place on Monday 12 April in the Modbury Club, commencing at 7.30 pm

New members welcome.

*David Mitchell*

## MODBURY HERITAGE PROJECT 2010

### Town Water Supply

The History Society has identified a project relating to the historical Water Supply for the Town. The 'Silverwell Spring' has been recorded as the original source. The reservoir and conduits built in the 18<sup>th</sup> Century provide the remaining evidence of this public utility.

There is evidence that in the past many households had access to a well or reservoir, and in some properties in the town there remans evidence of small reservoirs, capped wells and hand pumps. We would like to obtain information from any householder of the existence of such historic resources, so that we can include the information in our project.

Our request is: should you have such evidence then please contact Roy Sims: Tel. 01548 830530, or e-mail [cas.rs@tiscali.co.uk](mailto:cas.rs@tiscali.co.uk)

*Roy Sims*

## MODBURY SILVER THREADS

Will be having their March Get-togethers on:

**Tuesday 9<sup>th</sup> March  
Tuesday 23<sup>rd</sup> March**

Please come along and meet new friends

**at Modbury Club  
At 1.45 pm**

## THE MODBURY PLAYERS

### OLD TIME MUSIC HALL



The Players are staging an Old Time Music Hall show to be performed on 27, 28 and 29 May with proceeds leading to a contribution to St Luke's Hospice. There will be a meeting in the School Hall on Tuesday March 16 at 8.00 pm to allocate roles.

Anyone who would like to be involved please come along.

*Rehearsals will be every Tuesday and Thursday at 8.00 pm commencing on March 23<sup>rd</sup>*

**Contact Richard Lines  
on 831035**

if you are unable to attend but would like to be involved in any capacity

## MODBURY CARING

### Office Hours

**Monday 2 – 5 pm  
& Thursday 9 – 12 noon**

**Telephone: 01548 830118**

# SIANKABA NURSERY SCHOOL ZAMBIA



Jo West and Trish Berry are wonderfully proud to announce the construction of the Community Nursery School in conjunction with The U Foundation has been completed in Siankaba, Zambia.

Since our bike ride from London to Paris in May 2007 more than 100 other cyclists have completed the same ride and raised nearly £50,000 to finish the school.

The Modbury community raised £8,000 of this (16%). The Siankaba Nursery School in Zambia would not have been built without the Modbury Community's support.

The school comprises two classrooms and a teacher's house. It has been fully equipped and has running water, solar power and ablution facilities

The Headmaster, Malindi Lubinda (an ex-employee of Siankaba Lodge who sponsored him through Teachers Training College) has now moved into his house and is running classes very successfully. There is currently a volunteer out from the UK who will be working with Malindi for the next couple of months. A number of guests visiting the nearby Islands of Siankaba Safari Lodge have very kindly volunteered their precious time on holiday to assist at the school.

A detailed website on the school is in progress. The school volunteer is busy looking at a 'Sponsor a Child' project and then combining this with the children's profiles and progress being updated on the site.

Once again thank you for your support for this very worthy project.

*Jo West and Trish Berry*

## **MODBURY INFORMATION CENTRE NEEDS YOU!!**

**WE ARE CURRENTLY LOOKING FOR TWO VOLUNTEERS TO JOIN US FOR THE FORTHCOMING SEASON. HAVE YOU GOT THREE AND A HALF HOURS A WEEK TO SPARE TO WORK IN THE TOURIST INFORMATION CENTRE?**

**WE ARE LOOKING FOR SOMEONE WITH GOOD INTERPERSONAL SKILLS AND A SOUND KNOWLEDGE OF THE AREA.**

**IF YOU THINK THIS WOULD BE OF INTEREST TO YOU AND YOU WOULD LIKE TO FIND OUT MORE, THEN GIVE ME A CALL ON 01548 830159 OR EMAIL ME AT:**

[sue@modburytic.org.uk](mailto:sue@modburytic.org.uk)

**LOOK FORWARD TO HEARING FROM YOU**

*Sue Birch*

*Modbury Tourist Information Centre  
01548 830159*

**Spring Opening Times**

**From 20<sup>th</sup> March**

**Monday to Saturday 10am – 1pm**

With the Easter School break soon upon us, come and see the exciting array of things to do with your family and friends this Spring.

Visit the beautiful **National Trust Properties and Gardens**. Look out for the nature trails that many have to offer. Spring is just around the corner and the properties and gardens will all look truly amazing!

**Paignton Zoo and Living Coasts** have made - and are making - exciting changes to both venues. Paignton Zoo is currently the proud owner of **3 South American maned wolf cubs** and their **Sumatran Tiger Cubs** which were born last year are now a year old!

Fancy the thrill of **Crocodile feeding**? An amazing experience for all the family. Go to [www.paigntonzoo.org.uk/croc-swamp-feeding](http://www.paigntonzoo.org.uk/croc-swamp-feeding) for further details and times.

For these and more exciting ideas, call in for details and pick up your **discount vouchers** for Paignton Zoo, Living Coasts and Woodlands Adventure Park.

*Sue Birch*





## SAGAS FROM THE SOIL (By Modbury Allotment Association) Chapter 1.....March 2010



We all know that during the long, dark, cold winter months activity both above and below the soil is dormant. It's a time of frozen anticipation for all things horticultural...at least, that is what normally happens! In Modbury this winter there has been much mulching of ideas and propagating of plans in preparation for a local fruit and vegetable explosion!

Back in 2007 (yes, already 3 years ago!) the Parish Plan Questionnaire received an enthusiastic response regarding the provision of allotments in Modbury. The hunt for a suitable site was on. In 2009 Sylvia Mears came to our rescue and made the very kind offer of a field off Church Lane on a long term tenancy. Hooray! "Operation Allotments" could get underway. The Parish Council asked the community to take this forward. Without further ado, and with valuable planting time passing, the Modbury Allotment Association (MAA) was formed.

Despite snow, ice and frost the sound of gardening boots could be heard rushing through the streets of Modbury on their way to meetings to elect a committee (4 dedicated souls), write a constitution, research the organisation and running of allotment sites and oversee the opening of a bank account. Around Agas and in local hostelrys deep discussions took place and a site plan consisting of 14 half plots (approx. 125 sq m) was drawn up. Plots were allocated to those who had registered and were still keen to take up the spade and fork challenge. The plots filled quickly and a waiting list is in operation (to add your name to this list please contact Tim Smith, Chairman on 01548 830961). All this soil related sweat and toil means that MAA is now in a great position to administer any future allotment sites as and when they become available in the locale.

By now the paperwork was well underway so the committee and plot holders could start to do what they do best - get dirt under their fingernails! Several working parties took place in the field to mow, clear hedges and fell trees. The plots were marked out and a palpable excitement filled the frosty air. People brought their children, families and dogs to view their latest pride and joy! Lots of pacing the patch and sampling of soil went on. Gloved hands pointed and waved at imaginary rows of brilliant brassicas and sun-warmed soft fruit. It was really happening! **Thank you Sylvia!**

In order to share in our excitement, and mark this great addition to Modbury, we would like to extend a warm

welcome to the whole community to join us at the official opening of the site on Saturday, 13th March at 11.00 am.

This event will take place at the allotment site - 'Sylvia's Field', off Church Lane, next to Runaway Lane (opposite Benedict Way). We will be serving refreshments and will be able to share with you the story so far in words and photographs.

As for what the association will be getting up to over the coming months and years, well, you can share our experiences and "grow" with us by reading our column, "Sagas from the Soil", every month in The Messenger. Prepare to share our sprout successes and our carrot calamities! Look forward to seeing you on the 13th!

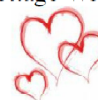
MAA

### MODBURY ALLOTMENT ASSOCIATION

Invite you to the  
**OFFICIAL OPENING**  
Of  
**THE MODBURY ALLOTMENT SITE**  
Off Church Lane, opposite Benedict Way  
On  
**Saturday, 13<sup>th</sup> March**  
At **11.00am**  
**Home-Made Refreshments!**  
**ALL WELCOME!**

### CAPERS

Outside Catering  
Personalised Menus to suit your Taste  
Dependable and Professional  
Event Organising  
Homemade Cakes  
Holiday Cottage Welcome Packs



Contact Ally - 01548 810394  
Email - [allylockyer@yahoo.co.uk](mailto:allylockyer@yahoo.co.uk)

*Happiness is Homemade!*



# MODBURY FAIR 2010

We are now planning this year's programme of events. If anybody has ideas we would like to know, and also is there anybody who would like to come and help?

We are also looking for people with talent. We would like to put on a 'Has Modbury Got Talent' type event. This will be an evening of entertainment for all ages. If you would like to take part please telephone Pauline Ryder 830133. Any talent will be considered.

We are having our next Fair meeting on  
**Tuesday 9th March in the Exeter Inn at 7.30pm**

Please come along - we will be glad to see you  
Any queries please Tel 830133

Thank you  
Pauline Ryder – Modbury Fair Co-ordinator



**IVYBRIDGE AND  
DISTRICT RNLI**

**14<sup>th</sup> MAY 2010**

**RNLI CHARITY DINNER AND DANCE  
KITLEY HOUSE**

1900 hrs – Reception: 1930 hrs – 3 Course Dinner  
Followed by Coffee/Tea

Dancing

2359 hrs – Carriages

£35 per person

Dress: Black Tie

Prize Draw

Further Details: 01548 830670/831143/830228  
or 01752 892274

## THROUGH THE DECK AIDS



This year for **May Fair** week, **St. George's Church** are putting on a display with the theme of **boats**. We would like to include photos of boat owners with their boats or any watercraft and photos of Modbury people on holiday or at work on dhows, sampans, cruise ships, speed boats, gondolas, punts, canal boats, aircraft carriers etc. Also we will have a world map and would like to pinpoint weird and wonderful places that people from Modbury have been to by water. We would also like to have on display boaty bits and pieces, anchors, paddles, model ships, nets, fishing gear, lobster pots, beach items and period swimwear etc.

If you could fill in the form below we will know how many things we will have to display. The exhibition will last for 4 days **from Thursday 4th to Sunday 7th May**. The items for display need to be brought to church on Wednesday 3<sup>rd</sup> May between 10am and 4pm and removed on Sunday evening or Monday morning. The event will be stewarded at all times but we advise you not to bring any very valuable items.

RSVP by **April 1<sup>st</sup>** to *Caroline Barker, The Vicarage, Church Lane, Modbury PL21 0QN*



Name: ..... Tel No: .....

I can provide:

- ❖ A photo of me and my boat/watercraft
- ❖ Bits and pieces (paddles, buoys, interesting artefacts, charts, model ships, knots, pirate outfits, fishing tackle, flags etc
- ❖ A photo of me/my family on any boat
- ❖ A weird and wonderful place I have travelled to by boat

(Please make sure all items are named)

## BUSINESS GROWTH AND DIVERSIFICATION FUND

The Business Growth and Diversification Fund (BGD) is a small grant scheme which aims to assist businesses to grow and diversify by investing in both capital and revenue activities. The grant intervention is 30% of eligible project costs. Minimum £1,000 – Maximum £10,000.

### Eligibility:

Under the RDPE programme, projects that are funded must fit into one of 3 themes:

1. Diversification into non agricultural activities
2. Creation and development of micro-businesses
3. Encouragement of tourism activities

### To apply for the scheme:

- A business trading address in the South Devon Coastal area
- Less than 10 full-time employees
- Have an annual turnover of less than £1.7 million.
- Latest set of accounts with a robust business plan
- If planning is required – the application must either be approved or submitted.

### What can be funded:

- Purchase of equipment (but not replacement or upgrading of existing equipment)
- Installation of new technology
- Product development and testing
- Technical support to lead to business growth
- Introduction of a new marketing technique
- Improving energy efficiency / reducing environmental impact/waste minimisation
- Adaptations/improvements to premises

### What can not be funded

- Vehicles
- Basic ICT equipment and software, such as office computers, printers etc.
- Actions to meet Health & Safety or other statutory requirements.
- Ongoing costs, such as overheads for utilities / staff

### How do I apply – and who do I contact

Cathy Heath, South Devon Coastal Project Officer will advise you as to whether or not your proposal will be eligible for the grant. Tel No: 01548 858805 or email: [cathy@ruraldevon.org](mailto:cathy@ruraldevon.org).

This project is part financed by the European Agricultural Fund for European Development 2007-2013: Europe investing in rural areas and is being delivered through the South West RDA with Defra as the Managing Authority.

## MODBURY PRE-SCHOOL

MODBURY Pre-school has welcomed a new manager, **Kate Peakman**. She has taken over from Bridget Scott who is stepping aside after more than 20 years in the post. Kate, who lives in Stoke Gabriel with her husband and two children, arrives with a wealth of experience and worked at the pre-school there before managing a large day nursery at South Devon College.

She joined the pre-school just before Christmas and has already fitted in well with the team.

Bridget will be staying at pre-school, part time, and will help Kate get up to speed with the hectic calendar of Modbury events.

Kate's role means that she divides her time on and off site in order to cope with the large amount of administration that is now involved in running a pre-school. But she is happy for parents and carers to arrange time for a chat if they have any questions.

There will also be a chance to get to know Kate better at the forthcoming Parents Evening which will be held on Thursday March, 10 at 7pm at the pre-school in Back Street.

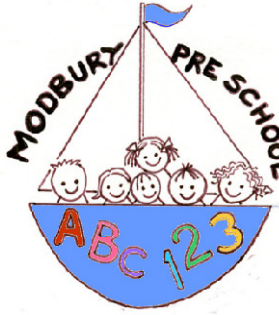
A selection of the children's work will be on display as well as a slide show of photographs of the children at play. Staff will also be on hand to answer questions.

One of the main projects pre-school hopes to focus on this year is the improvement of the garden and outside play area. Although the

children will be involved in some activities, such as planting, more willing parents are urgently needed to help prepare the ground.

Parents who would like to know more about pre-school, which is a charity, or would be willing helpers at others events to raise money for the pre-school will have the chance to find out how they can be more involved.

*Andrea Kuhn*



**FULL DAY CARE,  
5 DAYS A WEEK**

**Outstanding OFSTED Report  
Among top 3% of country!**

**Your 2½ - 5 year old  
Can now attend preschool  
all day  
9.00 am - 3.30 pm**

**Toddler Group Thursday  
1.15 - 3.30 pm  
All welcome with parent/adult**

**2 year olds are welcome  
Tuesday to Friday afternoons  
Please phone or drop by to  
enquire about sessions to suit  
your needs**

**Modbury Preschool  
Back St, Modbury  
01548 831477**

**Registered Charity  
No. 1039616**

# A LOCAL WINNER

Many congratulations to Jeremy Hibbard who lives and runs his TV company 'Televisory' in Modbury. At the recent Royal Television Society South West Annual Programme Awards he won the Craft Scriptwriting Award and the Non-Broadcast Production Private Sector Award. A great achievement in a very competitive industry.

*Roger Gage Fellow RTS*

## RUBBISH - RUBBISH - RUBBISH - and dog pooh!

On our annual 'KEEP MODBURY CLEAN' pilgrimage walk around the lanes of Modbury my wife and I once again did our bit for the environment and decided to pick up other people's rubbish that was lying on the roadside and in the hedgerows.

In just one half of a mile between Barracks Road and Sheephams we managed to fill one black bin bag completely full of other people's rubbish!

The main offenders were - yes you guessed it, discarded drinks tins, plastic bottles and crisp packets plus assorted other paper and plastic.

Yet again we refused to pick up at least 6 (one more than last year) plastic bags of what was - dog pooh! There is no other word for it - or is there?

This was a worthwhile exercise in as much as it showed that we are not as green as we think we are in and around Modbury. We could all try harder and also encourage our friends and children to do likewise - so come on Modbury if we ever want to do better in Best Kept Village this is one issue we can address.

There are lots of messages that can be sent out from this but my main one is 'KEEP BRITAIN TIDY' (Ah, now whatever happened to that initiative!!!) - and if you insist in forcing your dog to pooh in a plastic bag, dispose of it responsibly because there could be people out there watching you!!!

*Mervyn Kettle, Long Park*

### JOINT POLICE/COUNCIL SURGERY: MARCH

**Thursday 11th and Thursday 25th  
from 11.00 am – 12 noon at The Parish Office  
6 Modbury Court, Modbury**

Run by PC Rachel Ward  
Parish Clerk Mr David Hansford  
and Police Community Support Officer, Stacy Thorn

## MANGO

Modbury and Neighbours Generating Opportunities

MANGO was founded in 2009 as a business support network for self-employed women in Modbury and the surrounding villages.

The purpose of the Group is to enable business women to meet once a month to share ideas and network, both within the group and outside it.

MANGO is now up and running with around 20 members and has had some very productive meetings to date. The plans for 2010 involve networking events, guest speakers and business workshops.

If you are self-employed and living in the area, MANGO would like to invite you to join.

The next meeting will be held at 6pm on 8th March at the Brownston Gallery and will include a ½ hr talk on preparing accounts for small businesses. Please feel free to come along.

For more information call Alison MacKenzie on 01548 831492

**GENERATING OPPORTUNITIES**



## MODBURY TENNIS CLUB Notice of Annual General Meeting

Everyone is warmly invited  
and very welcome to join us on

**Friday 26th March at 7.00 pm**

At The Modbury Inn  
Brownston Street, Modbury

Modbury Tennis Club  
01548 830928  
modburytennisclub@btinternet.com

### SOUTH HAMS MOBILE LIBRARY

The Mobile Library will be  
at the following locations on  
**FRIDAY** mornings

Aylestone Pk (arr 0930 - dep 0955)  
Cromwell Park (arr 1000 - dep 1015)  
The Green (arr 1020 - dep 1035)

Also on **MONDAY** afternoons  
(excluding Bank Holidays) at **Poundwell**  
(arr 1600 - dep 1630)



## G H W Rosevear & Co

Chartered Secretaries and Incorporated Financial Accountants  
In Public Practice

### Ready for Recovery?

Have you weathered the storm of recession or are you starting a new business?

### Consult us for the way forward!

Now is the time to prepare for the future. Get working on those critical elements such as

- Budgets and Cashflow
- Working capital facilities
- Integrated business plans

### Consult us for the way forward!

We can help you prepare your integrated business plan; and assist you to secure adequate working capital from your bank.

### Consult us for the way forward!

We will prepare your accounts and work out your tax liabilities

We can also provide you with Book-keeping, Payroll Services and VAT Returns

#### Office Hours

**G H W Rosevear & Co**  
3, Modbury Court, 32 Church Street  
Modbury, Ivybridge, Devon, PL21 0QR

9<sup>15</sup> a.m. - 6 p.m.  
Monday - Friday  
Weekends by appointment

Tel: 01548 831427  
Fax: 01548 830977  
Email: [george@holbrookass.com](mailto:george@holbrookass.com)  
[www.accountantsouthdevon.co.uk](http://www.accountantsouthdevon.co.uk)



## LIFE SMOOTHERS

TO MAKE LIFE RUN MORE SMOOTHLY

Caretaking / key holding

Weekly property checks

Liaising with tradespeople/services

Spring cleaning— pre /post move cleans

Small decorating work

Year round garden care service

Holiday care – feed pets, watering garden, tubs, indoor plants etc.

Help at home

Whatever the task – just ask!

We offer a year round professional service

Tel: 01548 550538 or 07588604387

Or email: [lifesmoothers@aol.co.uk](mailto:lifesmoothers@aol.co.uk)



Based in Modbury



**Gas Works & Servicing**  
**Energy Efficient Heating**  
**Bathrooms & Showers**  
**All Hot Water Systems**  
**Maintenance & Repair**  
**Eco Energy Systems**



Contact us now for a free estimate:

Tel: **01548 830918** or Mob: **07863 128489**  
[info@wrightplumbing.co.uk](mailto:info@wrightplumbing.co.uk) [www.wrightplumbing.co.uk](http://www.wrightplumbing.co.uk)



KITCHENS BY  
**DeZine**

Form and Function  
Working in Harmony

A down to earth approach with a truly bespoke solution  
Beautiful kitchens fitted with a reputation you can trust

Call or email us to discover the potential of your kitchen

t. **01548 830 819** f. **01548 831 519**  
27 Church Street □ Modbury □ Devon □ PL21 0QR



[info@kitchensbydezine.co.uk](mailto:info@kitchensbydezine.co.uk)  
[www.kitchensbydezine.co.uk](http://www.kitchensbydezine.co.uk)



Mrs C V Harrington MCSP; MMAPC

Chartered Physiotherapist

Registered with the Health Professional Council  
And all Health Insurance Companies

DOMICILIARY SERVICE / HOME VISITS



Tel: 01548 810023  
Mobile: 07776393927

Member of the Organisation of  
Chartered Physiotherapists in Private Practice



**EDEN TREE & HEDGE CARE  
TREE SURGEONS**

- All tree surgery under taken
- (Qualified Tree surgeon NPTC qualified)
- Felling/reduction/pruning
- 24 hr call out on trees
- Lawn mowing / strimming
- Hedge cutting & laying
- Garden clearances
- Chipping and chainsaw work
- **Fully insured to £5 million**

Logs and wood chip for sale all year round  
for a free friendly quote call Adam sloman on  
01548 830611 or (07760 324419)



**MARTIN LEY  
PLUMBING & HEATING**

- Oil Installations,  
Servicing & Repairs
- Unvented Cylinders
- Bathrooms & Showers
- General Plumbing

Tel: Mobury 01548 830609  
Mobile: 07811 934551

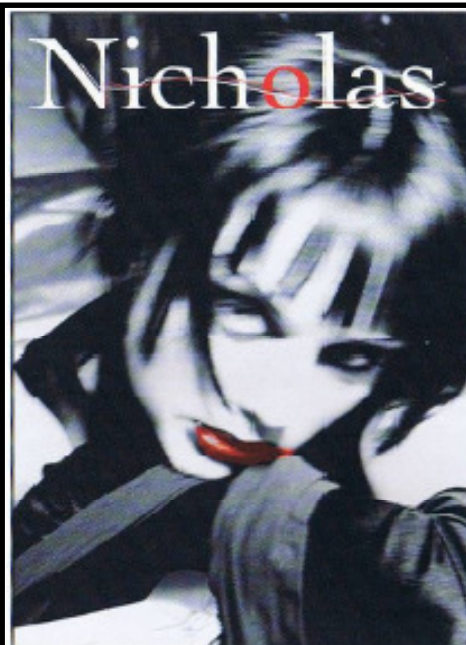
**ROBERT EASTON  
Bespoke painter and  
decorator**

Internal and external  
Painting and wallpapering  
Time served tradesman  
20 years experience  
No job too small  
Discounts for OAPs  
For that old-fashioned service

Tel: 01752 256674 or visit for  
references

[www.robertleaston.co.uk](http://www.robertleaston.co.uk)

31 Hillside Ave. Mutley, Plymouth PL4 6PR  
Mobile: 07771 614856



Hairdressing

**GOLDWELL**

Hair Cosmetics

LAMOUR

Hair Care Products

ghd

a new region for hair

Beauty Therapy

Dermologica Face and Body Treatments  
Holistic Massage  
Slimming Wrap  
St. Tropez Tanning  
Eye Lash Perming & Tinting  
Waxing  
**dermalogica**

Early morning or late evening appointments on request

London House,  
Church Street, Modbury, S. Devon  
Tel: (01548) 830152



**Wild Goose**



34 Church Street,

Modbury, PL21 0QR

01548 830715

Stockists of Rowan &  
Colinette wool/patterns

English Blue & White China

Various Range of jewellery

Fashion Accessories



Pine Furniture



**THE  
GARDEN  
PROJECT  
COMPANY**

PROFESSIONAL LANDSCAPE  
CONSTRUCTION

Brick, Wood & Stonework  
Decking, Fencing & Turfing  
Patios, Pergolas & Ponds  
Garden Buildings  
Planting & Maintenance  
Groundworks

01548 852436  
07967 746361

[www.gardenprojectcompany.co.uk](http://www.gardenprojectcompany.co.uk)  
Established 17 years



NIGEL FROST OPTOMETRIST

3 Chene Court  
Modbury  
Devon

Tel: 01548 830941

**'Look no further'**

NHS/Private Eye Examinations  
Everything from designer sunglasses to  
low cost lens and frame packages  
Contact Lens Specialists

Nigel Frost BSc(Hons) F.C.Optom  
Angela Hlickman BSc(Hons) F.C.Optom  
Kathryn Poole BSc(Hons) M.C.Optom

KINGSBRIDGE EYE CARE  
No 1, The Pomeade  
Kingsbridge  
Tel: 01548 856854

SALCOMBE EYE CARE  
84 Fore Street,  
Salcombe  
Tel: 01548 843207

## Accountancy Services

- Accounts
  - Tax Returns
  - Start-ups and Business Plans
  - Bookkeeping, Payroll & VAT
  - Fixed fees in advance
  - Self-Assessment and CIS
- Contact Alex Smith (ACA) on  
**01752 551 888**  
To arrange a free initial,  
no obligation meeting



## ANTIQUE FURNITURE REPAIRS & RESTORATION

Veneer Repairs, French Polishing  
Hand stripping & Re-finishing  
Wood-turning

**CANEWORK & RUSH SEATING**  
Danish Cord & Seagrass



**Guye Roberts**  
MASTHEAD  
Parsonage Road  
Newton Ferrers  
Plymouth  
DEVON PL8 1AS  
01752 872805

Website : [www.guye.co.uk](http://www.guye.co.uk)  
Email : [guye@guye.co.uk](mailto:guye@guye.co.uk)



## Rotary Awareness Day

Tuesday 23<sup>rd</sup> February 2010

Hundreds of Rotary clubs across Great Britain and Ireland will be taking part in this co-ordinated RIBI campaign between on Rotary Day (the organisation's birthday) and the week around it in an effort to raise £1 million for polio eradication.

You can 'join' with Kingsbridge Rotarians 10.00am – 4.00pm  
at the

**Market Hall, Fore St. Kingsbridge**

(Includes Refreshments)

There are two Rotary Clubs in Kingsbridge:  
Kingsbridge (Meet Mondays at lunchtime) & Kingsbridge Estuary (Meet Tuesday evenings)

Rotarians support two major international projects:



Rotary also run many others supporting local community youth and elderly person organisations, including West Country Hospices, etc.  
We also have a great social programme when we let our hair down and enjoy ourselves.

Our motto is: "Service above Self"

If you would like to hear more, perhaps with a view to joining us, but cannot come to the exhibition, contact:

Monday Lunchtime Club, Rotary Club of Kingsbridge: Secretary, David Carter, 01548 810915  
Tuesday Evening Club, Rotary Club of Kingsbridge Estuary:  
Secretary, David Graham, 01548 561637(h), 857600 (bus)

Serving the Local Communities - Do Come and Find Out  
More - See For Yourself!!!

[www.ribi.org](http://www.ribi.org)

## TALL ORDERS LANDSCAPING

## GARDEN MULCH WOODCHIP

LARGE QUANTITY AVAILABLE  
FOR DELIVERY IN:

- LARGE/SMALL LOADS (LOOSE)
- DUMPY BAGS
- BAGGED

FOR PRICES TEL JAMES TALL ON  
01548 831139 or 07967 258318 (mob)

## Bella's Flowers

Flowers for all occasions,  
Delivery service available

LISA CHADWICK,  
Qualified Florist,  
Specialising in Weddings,  
Funerals and Flowers for  
all Occasions



1 Broad Street, Modbury,  
Devon, PL21 0PS  
Phone/Fax 01548 830048

Email: [bellas-flowers@btconnect.com](mailto:bellas-flowers@btconnect.com)

## AQUA HAIR DESIGN

Modern Organic Products  
offers a new standard in  
professional haircare.  
It creates simple organic  
solutions.



Late opening - Fridays  
No 7 Modbury Court  
01548 831260



MR BUILDER Co.

A friendly, honest and reliable service.  
Fully insured and guaranteed.  
Transforming any part of your home

'from foundation to decoration'

Call Today:

Office: 01548 831303 (Modbury)  
Mr Builder James: 07825 214368  
Mr Builder Paul: 07974 508947  
E: [jamesandpaul@mrbuilderco.com](mailto:jamesandpaul@mrbuilderco.com)



## TALL ORDERS

Landscaping & grounds  
maintenance

~lawn mowing ~hedge trimming  
~brushcutting ~clearance....

HARD LANDSCAPING  
~fencing ~decking ~patios

~natural stone walling

CHAINSAW & TREE WORK  
UNDERTAKEN

Chipper & Mini-digger available  
logs supplied

For a friendly free quote call James  
Tall on 01548 831139 or mobile  
07967258318 (fully insured)



## Advertising Tariff for The Messenger

In order to support the publication of The Messenger, advertising relating to business or of a commercial nature will be charged at the rates shown below.

Information for community use will continue to be published free of charge.

### Single Insertion

1/9 <sup>th</sup> page	£10.50 per insertion
2/9 <sup>th</sup> page	£21.00 per insertion
1/3 <sup>rd</sup> page	£31.50 per insertion
1/2 page	£42.00 per insertion

### Three Insertions

1/9 <sup>th</sup> page	£8.40 per insertion
2/9 <sup>th</sup> page	£16.80 per insertion
1/3 <sup>rd</sup> page	£25.20 per insertion
1/2 page	£33.60 per insertion

### Six Insertions

1/9 <sup>th</sup> page	£6.30 per insertion
2/9 <sup>th</sup> page	£12.60 per insertion
1/3 <sup>rd</sup> page	£18.90 per insertion
1/2 page	£25.70 per insertion

### Eleven Insertions

1/9 <sup>th</sup> page	£4.20 per insertion
2/9 <sup>th</sup> page	£8.40 per insertion
1/3 <sup>rd</sup> page	£12.60 per insertion
1/2 page	£16.80 per insertion

Artwork of good black and white copy to be supplied. **Payment must be made in advance.**

Cheques should be made payable to 'Modbury Parish Council' and sent to The Parish Office, 6 Modbury Court, Church Street Modbury PL21 0QR.

**For further information please contact David Hansford on 01548 830222**

## MODBURY PARISH COUNCIL PARISH OFFICE

6 Modbury Court, Church Street  
Modbury  
Tel: 01548 830222  
e-mail [modburypc@tiscali.co.uk](mailto:modburypc@tiscali.co.uk)

**Hours of Business-**  
Mondays 9.00am – 1.00pm

**Parish Surgery**  
10 – 11 am every Saturday

### Planning Applications

Notices of planning applications lodged with SHDC are displayed on the Parish Noticeboard outside the Post Office. Copies of plans relating to these applications can be inspected at the Parish Office during above office hours or when a Councillor is on duty.

### Contacting Parish Councillors

Parish Councillors attend the Parish Office, on a rota basis, on Saturday mornings from 10.00 - 11.00am. Should you have any parish matter you would like to discuss come along to the Office at 6 Modbury Court. You can also call in to the Office on Mondays from 9.00am - 1.00pm and speak to the Clerk, David Hansford.

He can also be contacted by phone on 01548 830222 or e-mail at [modburypc@tiscali.co.uk](mailto:modburypc@tiscali.co.uk)

At all other times you can leave a message either by phone or e-mail (see above) or alternatively you can write a letter or speak at the public forum held at the beginning of each monthly meeting of the Parish Council, held on the second Monday of each month at 7.00pm in the annexe of the Memorial Hall.

## MESSENGER CLOSING DATE

*The closing date for the  
April Messenger is  
16<sup>th</sup> March 2010*

Please send all copy, by e-mail to [prestons@onetel.com](mailto:prestons@onetel.com) or deliver to the **Parish Office** (please note that all advertisements should be submitted **ONLY** via the Parish office – see below).

**Payment for all advertisements must be made in advance. Cheques should be made payable to 'Modbury Parish Council' and sent to The Parish Office, 6 Modbury Court, Church Street, Modbury PL21 0QR. For further information please contact David Hansford on 01548 830222.**

The Modbury Messenger is published by The Modbury Parish Council and is printed by SHDC, Follaton House, Totnes.

*The views expressed in the Modbury Messenger do not necessarily represent those of The Modbury Parish Council.*

## SOUTH HAMS DISTRICT COUNCILLORS

Our South Hams District Councillors are:

**Geoffrey Fielden – 830916**

or

[councillorfielden@southhams.gov.uk](mailto:councillorfielden@southhams.gov.uk)

**Mark Lawrence – 830423**

or

[Cllr.Lawrence@southhams.gov.uk](mailto:Cllr.Lawrence@southhams.gov.uk)

Our representative on DEVON COUNTY COUNCIL is William Mumford and he can be contacted on:

**01752 873002 or**

[william.mumford@devon.gov.uk](mailto:william.mumford@devon.gov.uk)

## PERSONAL ANNOUNCEMENTS

(Births, Deaths, Marriages, Thanks etc)

£5 per insertion - maximum 50 words

(Subject to available space)

The Editorial Committee reserve the right to précis/abbreviate any copy submitted for inclusion in the Messenger.

**1ST MODBURY  
CUB SCOUTS PRESENTS**



**MAD DOG MCREA  
MODBURY MEMORIAL HALL.  
MARCH 6TH • BAR OPENS 7.30PM**

TICKETS AVAILABLE TO PURCHASE FROM PICKLES OF MODBURY **£8** TICKETS

**RAIL SERVICES FOR IVYBRIDGE**

WEEKDAYS FROM 14 DECEMBER 2009 UNTIL 21 MAY 2010

DEP IVYBRIDGE TO PLYMOUTH		DEP PLYMOUTH TO IVYBRIDGE	
	Destination	Plymouth	Ivybridge
08.02	PZ	08.07	08.22
09.02	PZ	09.47	10.02*
10.25	PZ	12.00	12.15*
12.25	PL	13.43	13.59
15.19	PL	15.08	15.23
16.28	Lisk	16.57	17.12*
17.21	PL	17.48	18.03
19.13*	PZ	18.43	18.59
23.10*	PL	21.25	21.40

SATURDAYS FROM 19 DECEMBER UNTIL 22 MAY 2010

DEP IVYBRIDGE TO PLYMOUTH		DEP PLYMOUTH TO IVYBRIDGE	
	Destination	Plymouth	Ivybridge
08.01	PZ	08.06	08.21
09.03	PL	10.01	10.16*
10.19	PZ	12.00	12.15*
12.08*	PL	15.32	15.47
13.47	PL	16.57	17.12*
16.47	PL	17.41	17.56
17.10*	PL	18.44	18.59
18.50	PZ	21.15	21.30
19.11*	PZ		

SUNDAYS FROM 13 DECEMBER 2009 UNTIL 16 MAY 2010

DEP IVYBRIDGE TO PLYMOUTH		DEP PLYMOUTH TO IVYBRIDGE	
	Destination	Plymouth	Ivybridge
10.12	PZ	14.00	14.15
12.51	PL	16.02	16.17
17.03	PZ	17.09	17.25

- \* High Speed Train
- NA Newton Abbot
- EX Exeter (St Davids)
- BR Bristol
- PDN London (Paddington)
- PL Plymouth
- PZ Penzance
- Lisk Liskeard

All eastbound trains call at Totnes.

Full and mini timetables also available from the Watermark Information Centre, Erme Court; National Rail Enquiries contactable on 08457 484950 or [www.nationalrail.co.uk](http://www.nationalrail.co.uk); First Great Western Enquiries [www.firstgreatwestern.co.uk](http://www.firstgreatwestern.co.uk)

**Cre8 Easter  
in Modbury**

Children's Craft Workshop  
At St. George's Church  
On Saturday 27<sup>th</sup> March  
2- 4pm ages 5-11  
Places limited. Please book by  
21<sup>st</sup> March.  
Caroline Barker 830260

**SHORT MAT BOWLS**

The Modbury Short Mat Bowls  
Club

**EVERY WEDNESDAY**

7.00 pm at the  
Memorial Hall

New members are welcome

Come along and try it – it's fun

Pauline 830133

**MODBURY BADMINTON  
CLUB**

Memorial Hall

Tuesdays 7.30 – 10 pm

New members always welcome.  
For further information please  
contact:

Gill Jolly

Tel: 01548 831263

**Noah's ARK**

Songs, stories and play  
for under 5s - bring a grownup

Thursday 4<sup>th</sup> March 2010  
from 9.15 am

in St George's Church, Modbury

This month's theme -  
The Lost Coin.

Car Park in Church Lane

For more information  
contact  
Emma Romney 831126 or  
Jo Woodcock 831128

S  
t  
G  
e  
o  
r  
g  
'  
e  
'  
s  
C  
h  
u  
r  
c  
h

**Beetle Drive and  
Warming Teas**

Sunday March 28<sup>th</sup>

3.00 pm

In St George's Church

Another chance to have fun and enjoy toasted  
crumpets and hot cross buns. If you came last  
time, come again and bring your friends, if you  
couldn't come previously now is your chance  
to see what you missed!

A fun, social afternoon for  
people of all ages.

Just come for tea if you wish.  
Everyone welcome!

Why don't you brighten up your  
Saturday morning shopping and join

**MODBURY FRIENDS OF  
ST LUKE'S HOSPICE**

who invite you to join us for

**COFFEE AND CAKES**



On Saturday 13 March  
from 9.30am

At **Bistro 35** Church Street Modbury?