

Modbury Messenger

MODBURY'S OFFICIAL PARISH COUNCIL WEBSITE
www.modburypc.co.uk

HAPPY NEW YEAR TO ALL MODBURY RESIDENTS



VOLUNTEER BAND ENSURES CHRISTMAS LIGHTS SWITCH-ON

“Even better than last year” was the unsolicited praise from many spectators who travelled from as far as Plymouth and Salcombe to join in one of Modbury’s special events – ‘The Christmas Lights Illuminations - on Friday 27th November. The weather that evening was kind to us and traditionally the Samba and Laira Bands, along with the Kingsmen supported the evening’s festivities in style.

As always, there are those few who give unselfishly of their time and expertise putting up the lights and trees in order

for the majority to enjoy this special event in Modbury’s calendar. All our thanks specifically go out to the following for their contribution:

Phil Ainsley and Mike Tillett for their trapeze acts on ladders, Mark Williams for knowing where to put the cables and plugs and pulling the team together, Dave Kitt for being our in house ‘sparky’ and the rest of the team - Richard Thorns, Colin Campbell, Martin & Colin Stallard, Martin Pepperell, Peter Watts and Ty Freeman - who either drove forklifts, foot ladders, delivered trees, put up trees, stopped traffic and generally ran around.

Also importantly thank you to the residents who kindly let us use their electricity to light up the trees, particularly Mr & Mrs Young at Palm Cross and Alan Jenkins in Galpin street.

Without all of these people Modbury lights would not happen! So thank you again from the residents and traders of the town..... you did us proud.

Please can you all help take them down in January!!

Tim Rolt

MODBURY ALLOTMENT ASSOCIATION

A Modbury Allotment Association has been formed. Anyone interested in an allotment please contact:
Tim Smith (01548 830961)

AROUND THE CHURCHES



St Monica's Roman Catholic Church

St Austin's Priory
01752 892606
Sundays
9.00 am Mass
Everyone Welcome

Modbury Methodist Church

Superintendent
Minister
Rev John Beadle
(Tel 01548 852073)
Ministers
Rev Gordon Davis
(Tel 01803 862350)

Sunday Services
10.30 am in
St Monica's Church

This is a small friendly group
Do come and join us

January Services

Sunday 3rd
Mr R Hamblin

Sunday 10th
Mrs S Sargeant

Sunday 17th
United Covenant Service
Rev John Beadle

Sunday 24th
Mrs J Harvey

Sunday 31st
Rev A Grist

Dear All

Happy New
Year!
(or is it?)



Some people find themselves sad at this time of year: Seasonal Affective Disorder sometimes known as the Winter Blues can be linked to the shorter days of winter. In that sadness there seems to be a shadow over everything. But now the shortest day is past and days are getting longer. The future is brighter – certainly in terms of the daylight we can expect and maybe in other ways too....



This month the church is still celebrating; we seem to make a habit of it as we become more sensitive to the brightness of glory which eyes of faith can detect. We have only just finished Christmas and now we celebrate Epiphany.

When cartoon characters get a good idea, or realise what is going on, or it "clicks" and suddenly makes sense, they are often shown with a light bulb above their heads – (sorry it's not an energy efficient one, but then they are not quite so bright are they?)



You will have had the same experience in your life on a number of occasions when the fog of confusion lifted and you saw clearly. You moved from darkness to light.

This is what Epiphany is all about – the light bulb moment.

Wise men followed the light of a star, and somehow recognised God in a baby; others wondered more deeply when faced with miracles; disciples saw something unique in Jesus and decided that following him was worth more than anything else.

John Newton reflected on Epiphany in his life in the hymn "Amazing grace", when he wrote: "I once was lost, but now am found, was blind but now I see."

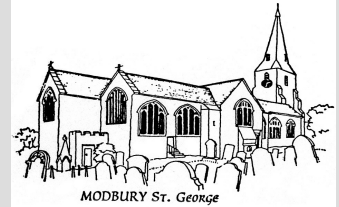
Our God specialises in revelation, he'll help UC.

Have a go at this dingbat to help you towards Epiphany:

(Answer on page 3)

stand
now!

Neil Barker



St George's

Parish Church, Modbury
Connecting people to God

SERVICES AND EVENTS JANUARY

Sunday 3rd

9.30 am – Holy Communion

Thursday 7th

9.15 am ish – Noah's Ark

Sunday 10th

8.00 am – Holy Communion

9.30 am – Family Service

Thursday 14th

9.30 am – Holy Communion

Sunday 17th

10.30 am Covenant Service with
Modbury Methodists at St Monica's

Thursday 21st

9.30 am – Holy Communion

Sunday 24th

8.00 am – Holy Communion

9.30 am – Morning Prayer

Thursday 28th

9.30 am – Holy Communion

Sunday 31st

10.30 am – Team Service at All Hallows,
Ringmore

DIARY DATES FOR 2010

Book these social events into
your new diary now
to ensure you don't miss them!

Sunday February 7th 2.30pm

Beetle Drive and Winter Warmer Teas in
St George's Church. Just come for tea if
you wish.

Saturday 19th June 2.00pm

St George's Church Fete in the Vicarage
garden or the Church if wet.

Sunday July 11th

Open Gardens in Modbury, in aid of St
George's Church. Details to follow.

Sunday September 5th 2.00pm

Treasure Hunt around Modbury and teas
in St George's Church.

Saturday September 18th

St George's Church Harvest Supper and
Entertainment 7.00pm in Modbury
Memorial Hall

Sunday September 19th

St George's Church Harvest Festival

Saturday November 20th 7.00pm

Puddings and Quiz Night in aid of St
George's Church in Modbury Memorial
Hall

MODBURY YOUTH GROUP

A Youth Group has been formed which will be raising funds for a Multi-Use Games Area (MUGA) on the Recreation Ground. The group gave a brief presentation at the last Parish Council meeting and the Parish Council congratulates all those involved for their enthusiasm, and supports them in their aims to provide improved facilities on the Recreation Ground.

PLANNING

Modbury Parish Council recommended approval and SHDC granted approval for:

3 Broad Street - Conversion of outbuildings and enlargement of existing first floor flat.

2 Scoldens Close – Formation of room in roof space.

The Old Chapel, Church Street - Conversion of retail shop to dwelling.

11 Benedict Way – Alterations and extension to dwelling.

Modbury Parish Council recommended approval for:

Gate Farm, Brownston – Retrospective application for retention of agricultural store and associated changes of land levels.

Extension to Memorial Hall – Subject to conditions.

Dunwell Farm – Application for agricultural worker's dwelling – subject to appropriate agricultural tie.

Modbury Parish Council recommended refusal for:

Green Oven Barn – Conversion of barn to workshop use, changes to access and installation of septic tank.

RECYCLING

Please do not leave cardboard boxes, bags and other rubbish around the recycling bins in Poundwell Car Park. If you cannot deposit items in the appropriate bins please take them home.

PARISH COUNCIL WEBSITE

If you are a Town Trader and would like a link to the Parish Website please contact Jean Carlyle Lyon at jean.carlylelyon@googlemail.com

If you are organising a local event please let Jean Carlyle Lyon know so that she can put your event into the diary. Send your details to: jean.carlylelyon@googlemail.com

JOINT POLICE/COUNCIL SURGERY: DECEMBER

Thursday 14th and Thursday 28th

**from 11.00 am – 12 noon at The Parish Office
6 Modbury Court, Modbury**

Run by PC Rachel Ward, Parish Clerk Mr David Hansford and Police Community Support Officer, Stacy Thorn

HOUSE FIRE GALPIN STREET

On Tuesday 15th December just after 1.00pm there was a serious house fire at 45 Galpin Street.

Emergency calls were made to the fire brigade however no fire tender could be sent from Modbury, Kingsbridge or Kingston due to the lack of available retained fire personnel.

What was turning into a very serious situation was only saved by the prompt actions of 3 local men - Peter Watts, Mark Hurrell and Charles Jones - who helped the residents to safety and tackled the fire at source. A fire tender from Ivybridge did eventually arrive although the fire was out.

The matter raises serious concerns over the fact that all three of the nearest stations were unable to attend the emergency.

The matter will be raised at the next Parish Council meeting.

Dingbat answer from Page 2 = Now I understand

POLICE CONTACT DETAILS

Sergeant Jane Corkhill (Neighbourhood Team Sergeant)

Jane.CORKHILL@devonandcornwall.pnn.police.uk

Tel: 08452 777444 x4233

Rachel Ward (Neighbourhood Beat Manager)

Rachel.WARD@devonandcornwall.pnn.police.uk

Paul O'Dwyer (Police Community Support Officer)

Paul.O'DWYER@devonandcornwall.pnn.police.uk

Stacy Thorn (PCSO)

Stacy.THORN@devonandcornwall.pnn.police.uk

All the above can be reached on 08452 777444 Extension 4225

Obviously if there is an emergency the public should dial 999

MODBURY OIL GROUP

The Modbury Oil Group has now been running for more than twelve months, courtesy of Watson Fuels. The bulk buying scheme ensures members are able to obtain domestic heating oil at a very competitive price. If you live in or near Modbury and are interested in joining please contact:

**Peter Preston by e-mail at: prestons@onetel.com
or by phone: 01548 831324**



MODBURY FRIENDS OF ST LUKE'S HOSPICE

Our group has been meeting for a year now and we have managed to organise or help with various fund-raising activities in and around Modbury. We have raised in excess of £2,000 as well as providing willing workers at the Modbury Music Festival which made almost £6,000. As a group we would like to thank all of you who have been so generous with your time and money.

We have a thriving committee but would love to hear from anyone who would like to go on our list of willing helpers who could be called upon from time to time. It is not too demanding and such rewarding work for a good cause.

Joan Ellis

e-mail: joan.ellis44@googlemail.com

“HAPPY NEW YEAR”

To one and all, from

Modbury Information Centre

5 Modbury Court Modbury Ivybridge Devon PL21 0QR

Tel 01548 830159 Email enquiries@modburytic.org.uk

Winter Opening Times **Saturday 10am –12 noon**

Call in and see us for the new **Modbury Area Guide** for things to do in the coming months, whether it's for those winter walks or trips to the cinema and theatre, we have all the up to date listings; also check out our **new web site** at www.modburytic.org.uk . **Have you got something you would like to add to the events page?**

For that wet and windy day go along to the new **Art Café** in Fore Street in Kingsbridge and design and paint your own mug, plate, vase, jug or ornament, which will then be glazed and fired for that extra special gift!
www.theartcafe.biz

Sue Birch

MARS 50 – 50 LOTTERY RESULTS **NOVEMBER 2009**

1 st : 050	Phil Andrews	£25.50
2 nd : 026	Alex Hammerstein	£15.30
3 rd : 102	Mike Tillett	£10.20

DECEMBER 2009

1 st : 059	Sybil Watts	£25.50
2 nd : 129	Gill Jolly	£15.30
3 rd : 118	Chris Birch	£10.20

To take part in the 50-50 Draw contact the Membership Secretary: Lyn Weeks - 830007

THE GREEN CORNER

Could Modbury be an Eco-Town? (by Philippa Barnes)

Last summer I asked the people of Modbury to fill in a questionnaire about their energy use and energy saving measures they used in their homes. This was for my final year project at Portsmouth University where I was studying Environmental Hazards. Over a third of households replied, which was a fantastic response, so “Thank you, Modbury”. So how eco-friendly are we?

Modbury households, on average, use a total of 12,000 kWh, compared to a national average of 18,000 kWh a year (combined gas, oil and electricity). This shows that households in Modbury are already using one third less energy than the national average.

The study looked at energy saving measures to see if these could be increased.

- Over 80% of properties surveyed had double glazing and this is probably already at the limit possible in Modbury because of the conservation area.
- Most properties had some form of loft insulation, but only 12% of households had the recommended 270mm. Loft insulation is a cheap and effective way to save energy.
- Wall insulation was present in 51% of houses, with a possible maximum of 75% of houses being suitable for cavity wall insulation.
- Only 30% of households used only energy saving light bulbs, but a further 60% of households used some, with only 10% having no energy saving bulbs.
- Over 55% of households leave some of their appliances on standby, but only 3% leave all appliances on standby.

Households were asked about what temperature they set their central heating thermostats to, with the recommended temperature being 18-21 deg C. 43% of heating systems were set to the recommended temperature with only 8% using above the recommended settings.

Only a very small number of households in Modbury had fitted renewable energy systems (solar water heating, wind turbines, solar photovoltaics). Solar water heating is relatively inexpensive to fit and could be fitted to roofs facing SE, S or W. Looking at the roof orientations of houses in Modbury, I found that 58% of households in Modbury were suitable for fitting solar water heating. If all suitable roofs were fitted with solar water heating systems, a total of 0.5 million kWh a year could be saved for the whole of Modbury.

From the questionnaires it was possible to estimate the present total annual domestic energy requirement of Modbury (8 million kWh), to calculate savings possible by fully implementing energy saving measures (0.59 million kWh per annum) and savings by the introduction of solar water heating where possible (0.5 million kWh per annum), further reducing the annual energy requirement of Modbury to 6.9 million kWh.

The next step was to look at ways to generate electricity by renewable means to supply the town. I looked at the possibility of a wind turbine or a number of wind turbines and a tidal barrage built across the Erme from Wonwell Beach. A barrage on the Erme could produce 2.5 million kWh a year so it would not be feasible to use it solely to power Modbury but could be used in combination with other eco-technologies.

Having measured wind speeds in Modbury over a nine month period, and looking at Government data on wind speeds in the local area it was possible to calculate that one 100m high wind turbine situated on the Recreation Field or on the hill by Butland above Modbury would be large enough to supply 9.6 million kWh a year, more than enough for the energy needs of Modbury over the year.

So, in conclusion, would it be possible for Modbury to be self sufficient in terms of energy? Yes, it's possible but would you want a wind turbine of such a size overpowering the town? If we all do our own small bit to save energy we may not need to resort to such extreme measures.

SCHOOL REPORT

A HEAVENLY CHOIR

The school choir's pre-Christmas world tour of Modbury was a sell-out with all dates fully booked. The children had been busy learning new songs ready to entertain at Christmas with melodies for the elderly, harmonies for the church and festive cheer for the Exeter Inn, all of which were hugely successful.



Pictured are the brand new choir T shirts, bought with help from the PTA and money the children raised themselves. The tops, embroidered with a special logo designed by some of the singers, look fantastic. We hope you all had a chance to hear these wonderful youngsters raising the roof during the festive season.

ARE YOU SITTING COMFORTABLY...?

The schoolchildren will be sitting pretty after the Christmas Bazaar raised a whopping £1,000 which will be spent on new soft seating for the reading areas in each classroom.

As usual, it proved impossible to slip through the hall and emerge with one's wallet intact. All those who attended were comprehensively shaken down by a ruthless brigade of stallholders who took no account of age, infirmity or ability to pay. As a result, the bazaar was an outstandingly successful event and the PTA would like to thank all those who came to support it as well as those who gave up their Saturday to run the stalls, provide refreshment and generally fetch and carry.

WE LOVE TO BOOGIE

Well, they promised us a funky good time and local band Swampash certainly delivered with a fantastic pre-Christmas gig, performed for free to raise money for the school.

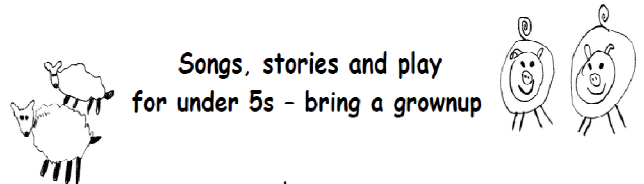
The rock was hot, the funk was cool and the beer was ice cold and plentiful. Unfortunately, not enough people made it all the way to the Memorial Hall to make this the real money spinner it could and should have been but, on behalf of those of us who were there, thank you Swampash, it was a great night out.

A FAIR DEAL

Thank you to the Fair Committee for the £250 donation they made to the school from last year's May Fair. The money will be spent on packs of books for each class, all of which will be much appreciated.

Ellen

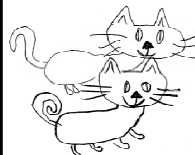
Noah's Ark



Songs, stories and play
for under 5s - bring a grownup

Thursday 7th January 2010
from 9.15 am

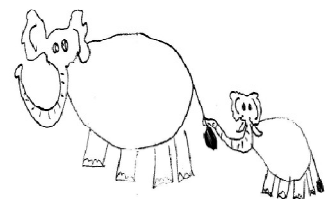
in St George's Church, Modbury



This month's theme -
Looking for a king.



Car Park in Church Lane



For more information
contact
Emma Romney 831126 or
Jo Woodcock 831128

MODBURY TIDDLERS

A Community Run Group for Small People aged
0 - 5 (and for the people who wipe their noses!)

PLAYTIME FOR THEM!
COFFEE AND A CHAT FOR US!



Fridays 9.30 - 12 noon £1.50 per child

@Modbury Memorial Hall

Enquiries ring Angie: 01548 831139



MODBURY LOCAL HISTORY SOCIETY

Our Annual General Meeting on 9th December 2009 was attended by over 50 members and was held in the Exeter Inn – thanks to Nicola for helping us out when we were unable to use our usual venue.

Chairman Mary Timmis gave a brief account of our activities during the past year. All meetings have again been well attended, with an average attendance of 45. All speakers have been excellent and we still have four more to look forward to in the current programme. All officers were thanked for their continued support; also Roy Sims for his Heritage work and Vicki and Pat Hammerstein for their website assistance.

Minutes of the 2008 AGM were taken as read and Stephanie Linnell, the Treasurer, said that our finances are in good shape thanks to the continued sale of our publications, mainly through the Post Office and Tourist Information Centre.

Apart from the Treasurer, all officers agreed to stand for another year. Stephanie asked to be relieved from her post due to other commitments but Audrey Cresswell kindly agreed to fill the post of Treasurer. President Phil Andrews thanked Mary for her excellent chairmanship - all agreed with a round of applause!

We are most grateful to Stephanie for looking after our finances during the last few years, also to her 'assistant' Peter who has willingly 'filled in' when necessary!

Roy Sims explained that during the coming year we shall be involved with the South Devon AONB – 2010 is their 50th Anniversary and local History Societies have been asked to assist them with their '50 Outstanding Years Then & Now' project. If anyone has any interesting photographs which could be used please contact Roy. He will scan and return them.

We were then entertained by Ivor Davies with his musical tapes, followed by a 'Devon Quiz' which was ably organised by Audrey Cresswell. The winner was Sue Wright who received a prize. Finally we were treated to mince pies

and a glass of wine – thanks Phil for organising this.

Our first meeting in 2010 will be on January 13th. Tony Burges from Honiton will be presenting an illustrated talk with the title 'A Devon Selection', a journey across the county and along the Jurassic Coast. The meeting will commence at 7.30 pm – venue The Library, Flete House. If transport is required please ring Mary Timmis (830768) or David Mitchell (830446).

BEST WISHES FOR 2010 New members always welcome!

David Mitchell



The Royal British Legion Modbury Branch

The first General Meeting in 2010 will take place on **Monday 1st February** in the Modbury Club, commencing at 7.30pm.

New members welcome, subscription £11.00 per annum.

At this meeting Wing Commander Stanley Pratt will be describing some more of his RAF experiences. We would like to hear from any other ex-Service personnel who may have some interesting memories. At our December meeting George Luckraft from Ermington brought along a tape recording which had been made several years ago regarding one of his wartime comrades when they were engaged in the 1940s bombing raids on Germany. George was a radio operator on Lancaster bombers.

HAPPY NEW YEAR!

David Mitchell

NATIONAL SERVICE REUNION November 2009

The annual reunion was held this year at The Modbury Inn, where a group of nine met to reminisce.

This year we welcomed two new members, Guardsman Professor Adrian Gale, and Eric Wallace MBE, fresh from his recent lecture on "Tutankhamen" to the History Society. Eric had served in the Suez whilst in the Royal Engineers.

There are currently 26 ex-National Servicemen on the list, two of our original group served on active service in Korea, Norman Furzeland who sadly died two years ago and Jim Irish who is still fighting fit.

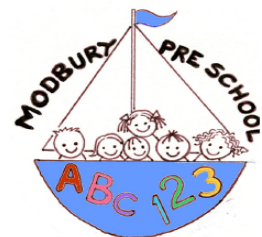
"Excused Boots" this year were John Robinson, Jim Petford, Adrian Woods, Bob Campbell-Smith, Andrew Thomas and Derek Perkins.

A Reminder:

National Service was introduced after the WW2 from 1949 to 1963 and conscripted young fit men to join a branch of the armed services. Initially the term was for 18 months, but with the commencement of the Korean War this was extended to two years.

Within the Modbury Group there is a general opinion that National Service was a unique and very positive life experience. It is said by many that the introduction of such a compulsory scheme would be of great benefit to some of the young men of today.

AC.1. Roy Sims RAF



FULL DAYCARE 5 DAYS A WEEK

Outstanding OFSTED Report
Among top 3% of country!

Your 2½ - 5 year old can now attend preschool all day

Toddler Group Thursday
1.15 - 3.45 pm, all welcome, with parent/adult

2 year olds are welcome
Tuesday to Friday afternoons
Please phone or drop by to enquire about sessions to suit your needs

Modbury Preschool
Back St, Modbury
01548 831477
Registered Charity
No.1039616

DISTINCTLY DEVON RECIPE BOOK



Following the very successful launch of the St George's church recipe book, Distinctly Devon, I would like to thank the shops and businesses in Modbury who have very kindly sold copies to raise funds for charity and the restoration work on the church.

Copies are still available for anyone who unfortunately didn't receive one for Christmas!

Thanks to:

Wilkinsons, The Hat Shop, Brownston Gallery, Pickles, Bella's Flowers, Marchand Petit, Top of the Steps, Kitchens by Dezine and Modbury Inn.

Robin Chambers



THE SOUP LUNCH

I would like to thank the people who helped on the morning:

Carol James, Margaret Woods, Pam Jaynes, Beryl Masters, Elizabeth Lamb and all the people who helped on the stalls.

Also Mrs Rickman for coming and helping to do the washing up and to all the people who turned up to enjoy the soup. Also thanks to Allan Jenkins who made all the rolls.

We made £432, which was divided between St George's Church and The Memorial Hall for their curtains.

Once again thank you.

Pauline Ryder

MODBURY FAIR

DISTRIBUTION OF FAIR FUNDS

I would like to thank all the charities that applied for money from the Fair. We gave away £2000 to thirteen charities.

These were:

Brownies, Silver Threads, MARS, T.I.C. Modbury Rovers Juniors, Chamber of Trade, Memorial Hall, Modbury Tiddlers, Modbury Lunch Club, Modbury P3, St George's Church, Modbury Pre-School and Modbury School PTA.

I hope you all find your donations helpful with all your projects.

Next year's theme is THROUGH THE DECADES

Pauline Ryder

**MODBURY
SILVER
THREADS**

**HOLIDAY TO
GREAT YARMOUTH**

**On April 19th 2010
.... is still open**

**If anyone is interested please
phone 01548 830861**

~~~~~

**The next meeting is on  
9<sup>th</sup> February 2010  
at Modbury Club  
At 1.45 pm to 3.45 pm**

~~~~~

**Wishing Mrs B Westwood a
very happy retirement from
Modbury Silver Threads**

SOUTH HAMS MOBILE LIBRARY

The mobile library van isn't huge and you may think that it can't provide what you want, but I disagree! The van holds a stock of over 3,000 items and if it's not on the van I have access to all the libraries in Devon. Go online at www.devon.gov.uk/libraries to see what they have! Why buy the latest fiction book, which you may never want to read again, when you can get it from the Mobile Library for a 50p reservation fee?

Non-fiction books are expensive too and you may need them for only a short time – we can provide! I also have an extensive stock of large print and talking books and my passenger lift makes access to the van easy. And yes, I do have children's books, from board books to school project non-fiction.

I'm always trying to attract new users and show them what a wonderful service the Mobile Library has to offer. So, I'm really grateful to all the village newsletters that put the stops and stop times in every issue.

So, why not try out the Mobile Library in 2010? It's green not to travel!

Gill Boyce

**SOUTH HAMS
MOBILE LIBRARY**

**The Mobile Library will be
at the following locations on
FRIDAY mornings**

**Aylestone Pk (arr 0930 - dep 0955)
Cromwell Park (arr 1000 – dep 1015)
The Green (arr 1020 – dep 1035)**

Also on **MONDAY** afternoons
(excluding Bank Holidays) at
Poundwell (arr 1600 – dep 1630)

MODBURY CARING
Office Hours
**Monday 2 – 5 pm
& Thursday 9 – 12 noon**
Telephone: 01548 830118

**2010 - A TIME FOR
CELEBRATION**
(A letter from Barry White)

What an opportunity! The year 2010 marks a significant date in the history, or should that be non-history, of what was known as the Modbury By-Pass and now downgraded to the Modbury Relief Road.

The route of the By-Pass was set out in 1935; therefore, 2010 is the 75th Anniversary. It would be a shame if such an important occasion was not honoured, perhaps during Modbury Fair with a walk along the route and a Pied Piper, bands, clowns, etc.

It is an opportunity for a series of memorial seats, at viewpoints overlooking the route, providing contemplation spots for those waiting for the construction to commence, for those who might want to enjoy the view of unspoilt countryside while it still exists, or for others to ponder what might have been and for those who just wish to see the low flying pigs.

SIMPLY THE BEST!

People living in the South Hams send the smallest amount of waste per household to landfill nationally and are amongst the best recyclers in the country – it's official!

Every person in the South Hams has played a part in maintaining our top place in England by reducing, reusing, recycling and composting more and cutting the amount of waste sent to landfill. Government figures show that South Hams District Council topped the league table when it comes to the amount per household – just 339.89 kg – sent to landfill in 2008/09.

The South Hams also continues to have one of the best recycling and composting rates in the country – a whopping 57.9% – that's 19,650 tonnes of waste diverted from landfill, equivalent to the weight of 46 jumbo jets.

This national accolade is proof of the commitment by South Hams residents to cut the amount of waste produced and recycle more.

The South Hams continues to be within the top five in the recycling league table for 2008/09. Government figures confirmed that the amount of waste recycled by South Hams residents increased by just under 1% on the previous year's figure.

BISTRO

Licensed Restaurant
and Wine Bar

35

Winter Opening Times

Wednesday to Saturday

Bar: 6.00 pm – 11.00 pm
Restaurant: 6.00 pm – 9.00 pm

Sunday

Bar: 11.30 am – 11.00 pm
Restaurant: 12 noon – 2.30 pm
& 6.00 pm – 9.00 pm

Closed Monday and Tuesday

MODBURY (01548) 831273
35 CHURCH STREET MODBURY DEVON



South Hams Veg Boxes from the Nearly Naked Veg Company!

Veg grown *by us*, picked *by us*, then
delivered *by us* to your home.
Always grown without any unnecessary
chemicals.

You can order **on-line** as a one-off
or set up a regular order.

Call Sam for more info or to
place your order over the phone.

Tel: 01364 646106
info@nearlynakedveg.co.uk
www.nearlynakedveg.co.uk

Mrs C V Harrington MCSP; MMAPC
Chartered Physiotherapist

Registered with the Health Professional Council
And all Health Insurance Companies

DOMICILIARY SERVICE / HOME VISITS



Tel: 01548 810023
Mobile: 07776393927

Member of the Organisation of
Chartered Physiotherapists in Private Practice

ROCKSHOP

Fridays 7.00 - 9.00 pm
Modbury School Hall
10p Entrance
Younger Group Ages 8 - 11
Older Group Year 7 Upwards

Hockey, Basketball
Giant Skipping, Football
Craft, Drama, Tuckshop
and also for the older group: Community
Activities, Occasional Discos
and Live Bands
A Christian Youth Group
Established in Modbury
For over 30 years

EVERYONE WELCOME
Contact David - 831589
or Simon - 830857

MODBURY BADMINTON CLUB

Memorial Hall
Tuesdays 7.30 - 10 pm

New members always welcome.
For further information please
contact:

Gill Jolly
Tel: 01548 831263

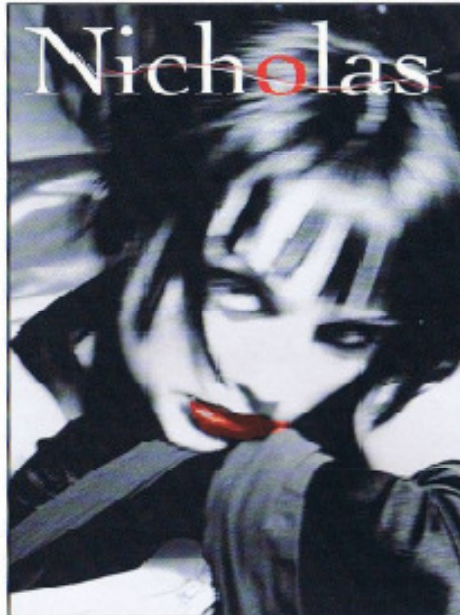
ROBERT EASTON Bespoke painter and decorator

Internal and external
Painting and wallpapering
Time served tradesman
20 years experience
No job too small
Discounts for OAPs
For that old-fashioned service

Tel: 01752 256674 or visit for
references

www.robsteaston.co.uk

31 Hillside Ave. Mutley, Plymouth PL4 6PR
Mobile: 07771 614856



Hairdressing

GOLDWELL

Hair Cosmetics

LAMOUR

Hair Care Products

ghd

a new religion for hair

Beauty Therapy

Dermatologica Face and Body Treatments
Holistic Massage
Slimming Wrap
St. Tropez Tanning
Eye Lash Perming & Tinting
Waxing

dermatologica

Early morning or late evening appointments on request

London House,
Church Street, Modbury, S. Devon
Tel: (01548) 830152



NIGEL FROST OPTOMETRIST

3 Chene Court

Modbury

Devon

Tel: 01548 830944

'Look no further'

NHS/Private Eye Examinations
Everything from designer sunglasses to
low cost lens and frame packages
Contact Lens Specialists

Nigel Frost BSc(Hons) F.C.Optom
Angela Hickman BSc(Hons) F.C.Optom
Kathryn Poole BSc(Hons)M.C.Optom

KINGSBRIDGE EYE CARE **SALCOMBE EYE CARE**
No 1, The Promenade 84 Fore Street,
Kingsbridge Salcombe
Tel: 01548 856854 Tel: 01548 843207

Wild Goose

34 Church Street,

Modbury, PL21 0QR

01548 830715

Stockists of Rowan &
Colinette wool/patterns

English Blue & White China

Various Range of jewellery

Fashion Accessories

Pine Furniture

THE GARDEN PROJECT COMPANY

PROFESSIONAL LANDSCAPE
CONSTRUCTION

Brick, Wood & Stonework
Decking, Fencing & Turfing
Patios, Pergolas & Ponds
Garden Buildings
Planting & Maintenance
Groundworks

01548 852436

07967 746361

gpc@higherleigh.co.uk
Established 17 years

Capers

- Outside Catering
- Event Organising
- Dependable & Professional
- Menus planned to suit your tastes
- Holiday Home Catering & Welcome Treats

Ally Gates: 01548 810394 allygates65@aol.com

Bella's Flowers

Flowers for all occasions,
Delivery service available

LISA CHADWICK,
Qualified Florist,
Specialising in Weddings,
Funerals and Flowers for
all Occasions



1 Broad Street, Modbury,
Devon, PL21 0PS
Phone/Fax 01548 830048

Email: bellas-flowers@btconnect.com

ANTIQUE FURNITURE REPAIRS & RESTORATION

Veneer Repairs, French Polishing
Hand stripping & Re-finishing
Wood-turning

CANEWORK & RUSH SEATING
Danish Cord & Seagrass



Guye Roberts
MASTHEAD
Personage Road
Newton Ferrers
Plymouth
DEVON PL8 1AS
01752 872805

Website: www.guye.co.uk
Email: guye@guye.co.uk

Accountancy Services

- Accounts
 - Tax Returns
 - Start-ups and Business Plans
 - Bookkeeping, Payroll & VAT
 - Fixed fees in advance
 - Self-Assessment and CIS
- Contact Alex Smith (ACA) on

01752 551 888

To arrange a free initial,
no obligation meeting

SHORT MAT BOWLS

The Modbury Short Mat Bowls
Club

EVERY WEDNESDAY

7.00 pm at the
Memorial Hall

**New members are
welcome.**

Come along and try it – it's fun

Pauline 830133



MARTIN LEY
PLUMBING & HEATING

- Oil Installations,
Servicing & Repairs
- Unvented Cylinders
- Bathrooms & Showers
- General Plumbing

Tel: Mobury 01548 830609
Mobile: 07811 934551

AQUA HAIR DESIGN

Modern Organic Products
offers a new standard in
professional haircare.
It creates simple organic
solutions.



Late opening - Fridays
No 7 Modbury Court
01548 831260



MR BUILDER Co.

A friendly, honest and reliable service.
Fully insured and guaranteed.
Transforming any part of your home

'from foundation to decoration'

Call Today:

Office: 01548 831303 (Modbury)
Mr Builder James: 07825 214368
Mr Builder Paul: 07974 508947
E: jamesandpaul@mrbuilderco.com



TALL ORDERS

Landscaping & grounds
maintenance

~lawn mowing ~hedge trimming
~brushcutting ~clearance....

HARD LANDSCAPING

~fencing ~decking ~patios
~natural stone walling

CHAINSAW & TREE WORK

UNDERTAKEN

chipper & mini-digger available
logs supplied

For a friendly free quote call James
Tall on 01548 831139 or mobile
07967258318 (fully insured)

Advertising Tariff for The Messenger

In order to support the publication of The Messenger, advertising relating to business or of a commercial nature will be charged at the rates shown below.

Information for community use will continue to be published free of charge.

Single Insertion

1/9 th page	£10.50 per insertion
2/9 th page	£21.00 per insertion
1/3 rd page	£31.50 per insertion
1/2 page	£42.00 per insertion

Three Insertions

1/9 th page	£8.40 per insertion
2/9 th page	£16.80 per insertion
1/3 rd page	£25.20 per insertion
1/2 page	£33.60 per insertion

Six Insertions

1/9 th page	£6.30 per insertion
2/9 th page	£12.60 per insertion
1/3 rd page	£18.90 per insertion
1/2 page	£25.70 per insertion

Eleven Insertions

1/9 th page	£4.20 per insertion
2/9 th page	£8.40 per insertion
1/3 rd page	£12.60 per insertion
1/2 page	£16.80 per insertion

Artwork of good black and white copy to be supplied. **Payment must be made in advance.**

Cheques should be made payable to 'Modbury Parish Council' and sent to The Parish Office, 6 Modbury Court, Church Street Modbury PL21 0QR.

For further information please contact David Hansford on 01548 830222

MODBURY PARISH COUNCIL PARISH OFFICE

6 Modbury Court, Church Street
Modbury
Tel: 01548 830222
e-mail modburypc@tiscali.co.uk

Hours of Business-
Mondays 9.00am-1.00pm

Parish Surgery
10 – 11 am every Saturday

Planning Applications

Notices of planning applications lodged with SHDC are displayed on the Parish Noticeboard outside the Post Office. Copies of plans relating to these applications can be inspected at the Parish Office during above office hours or when a Councillor is on duty.

Contacting Parish Councillors

Parish Councillors attend the Parish Office, on a rota basis, on Saturday mornings from 10.00 - 11.00am. Should you have any parish matter you would like to discuss come along to the Office at 6 Modbury Court. You can also call in to the Office on Mondays from 9.00am - 1.00pm and speak to the Clerk, David Hansford.

He can also be contacted by phone on 01548 830222 or e-mail at modburypc@tiscali.co.uk

At all other times you can leave a message either by phone or e-mail (see above) or alternatively you can write a letter or speak at the public forum held at the beginning of each monthly meeting of the Parish Council, held on the second Monday of each month at 7.00pm in the annexe of the Memorial Hall.

MESSENGER CLOSING DATE

*The closing date for the
February Messenger is
16th January 2010*

Please send all copy, by e-mail to prestons@onetel.com or deliver to the **Parish Office** (please note that all advertisements should be submitted **ONLY** via the Parish office – see below).

Payment for all advertisements must be made in advance. Cheques should be made payable to 'Modbury Parish Council' and sent to The Parish Office, 6 Modbury Court, Church Street, Modbury PL21 0QR. For further information please contact David Hansford on 01548 830222.

The Modbury Messenger is published by The Modbury Parish Council and is printed by SHDC, Follaton House, Totnes.

The views expressed in the Modbury Messenger do not necessarily represent those of The Modbury Parish Council.

SOUTH HAMS DISTRICT COUNCILLORS

Our South Hams District Councillors are:

Geoffrey Fielden – 830916

or

councillorfielden@southhams.gov.uk

Mark Lawrence – 830423

or

Cllr.Lawrence@southhams.gov.uk

Our representative on DEVON COUNTY COUNCIL is William Mumford and he can be contacted on:

01752 873002 or

william.mumford@devon.gov.uk

PERSONAL ANNOUNCEMENTS

(Births, Deaths, Marriages, Thanks etc)

£5 per insertion - maximum 50 words. (Subject to available space)

The Editorial Committee reserve the right to précis/abbreviate any copy submitted for inclusion in the Messenger.

KITCHENS BY
DeZine

Form and Function
Working in Harmony

A down to earth approach with a truly bespoke solution
Beautiful kitchens fitted with a reputation you can trust

Call or email us to discover the potential of your kitchen

t. **01548 830 819** f. **01548 831 519**
27 Church Street □ Modbury □ Devon □ PL21 0QR

info@kitchensbydezine.co.uk
www.kitchensbydezine.co.uk



G H W Rosevear & Co.

*Chartered Secretaries and Incorporated Financial Accountants
In Public Practice*

“Credit Crunch”

Under financial pressure and
not sure which way to turn?

Consult us for a way forward

*Licensed Debt Adjusters & Counsellors
Licensed Debt Collectors*

“Self-Assessment Tax Return”
All deadlines past!

Tax Payments
Struggling to meet them?

Consult us for a way forward

**Licensed Credit Brokerage &
Credit Reference Agency**

We can help you, or prepare your return for
you. Together with preparing your
Accounts, as well as Bookkeeping, VAT and
Payroll Services

**Incorporated Financial
Accountants**

Office Hours: 9.15 am to 6 pm
Monday to Friday
Weekends by appointment

**3 Modbury Court, 32 Church Street
Modbury, Ivybridge
Devon PL21 0QR**

Telephone: 01548 831427

Fax: 01548 830977

Email address:

george@holbrookass.com



**EDEN TREE & HEDGE CARE
TREE SURGEONS**

- All tree surgery under taken
(Qualified Tree surgeon NPTC qualified)
- Felling/reduction/pruning
- 24 hr call out on trees
- Lawn mowing / strimming
- Hedge cutting & laying
- Garden clearances
- Chipping and chainsaw work
- **Fully insured to £5 million**

**Logs and wood chip for sale all year round
for a free friendly quote call Adam sloman on
01548 830611 or (07760 324419)**



Based in Modbury



**Gas Works & Servicing
Energy Efficient Heating
Bathrooms & Showers
All Hot Water Systems
Maintenance & Repair
Eco Energy Systems**



Contact us now for a free estimate:

Tel: **01548 830918** or Mob: **07863 128489**
info@wrightplumbing.co.uk www.wrightplumbing.co.uk

