



Modbury Messenger

WELCOME BACK AFTER THE SUMMER BREAK!!

Never mind the weather, there is so
much to do in Modbury during September



MODBURY WALK & FUN RUN



SATURDAY 27TH SEPTEMBER

FROM MODBURY SCHOOL FIELD,

.....COME AND WALK, TODDLE, RUN, HOP WITH US!

FUN RUN AT 11:30
(Gate opens at 11.00)
CHILDRENS RUN AT 1:30

Live band * Bar * BBQ * Jungle Fun *
Bouncy Castle * Go-Karts * Sumo Wrestling
* Competitions

To book a stall for the Table Top Sale
Phone Hilary 831468

Yes it's Modbury Pantomime again!

We're planning to stage
"A Christmas Carol"
on 1, 2 & 3 January 2009

Come to an

Open Meeting

If you'd like to act, sing, dance, help hinder or
anything else in "A Christmas Carol"

Memorial Hall

11:00 am on Saturday
13 September 2008

Or, if you can't make the meeting,

Contact us by e-mail: Modburypantomime@f2s.com

Or one of us:

Rob & Gill West 830135
Nigel & Felicity Guild 830786
Sarah Wyatt 830458
Richard Lines 831035

AROUND THE CHURCHES



St Monica's Roman Catholic Church

St Austin's Priory
01752 892606
Sundays
9.00 am Mass
Everyone Welcome

Modbury Methodist Church

Superintendent Minister

Rev John Beadle
(Tel 01548 852073)

Ministers

Rev Gordon Davis
(Tel 01803 862350)
Rev Margaret Johnson
(Tel 01548 531455)

Sunday Services

10.30 am in
St Monica's Church

This is a small friendly group
Do come and join us

September Services

7th – Mrs Helen Hibbard
14th – Mr & Mrs Rob Hamblin
21st – Mr Barry Newey
28th - Rev John Beadle
(Harvest Festival)

Welcome home!

If you managed to get away in the summer, I hope you had a good time. However good it is when you are away, there is still something special about coming home to a place where you know you belong. This same thought is echoed in the Bible where pilgrimage, travel and the journey describe the spiritual life. Here in the world we are strangers and pilgrims passing through: restless, sometimes lost; sometimes travelling round in circles and sometimes feeling slightly homesick, aware that we are being drawn home to God, to a place where we know we belong.



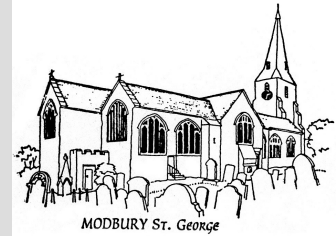
Sunday 28th September is "Back to Church Sunday". Around the country, people are being invited back to church; welcomed home. You will find a real welcome at St. George's Modbury and St. Andrew's Aveton Gifford that Sunday and every Sunday. People drift away from the church for many different reasons and some have not yet sensed God's welcome to the place where we are loved infinitely and belong eternally.

We hope many people will take this opportunity to come back home to God and come back home to his family here, the church.

Confused?.com It's not just sorting out insurance that is bewildering. Many people are confused about the Christian faith. "**Christianity Explored**" is a seven week course which gives opportunity to ask questions and find answers. We will be doing the course on Sunday evenings in October in St. George's Church, starting with a bring and share meal.

It's another opportunity to find your way home to God.

Neil Barker



St George's Parish Church, Modbury

*Give love - Receive strength
Jesus is for everyone*

SERVICES AND EVENTS IN SEPTEMBER

Wednesday 3rd

7.30 am – Worship Group Practice

Sunday 7th

10.30 am – Family Communion

Thursday 11th

7.30 pm – Modbury PCC

Saturday 13th

Historic Churches Bike Ride

Sunday 14th

10.30 am – Holy Communion

Saturday 20th

Worship Workshop led by
Mark Tailleur

Sunday 21st

10.30 am – Holy Communion

Sunday 28th

(Back to Church Sunday)
8.00 am – Holy Communion

9.30 am – Family Service

WEEKDAYS

9.00 am Morning Prayer

THURSDAYS

9.30 am Holy Communion

**St George's & St Andrew's
are open every day for prayer**

Due to misuse there are now no bins outside the church.

Compostable material can be put on the compost heap. Please take anything else home.



SECURITY WARNING

There have been a few instances of 'doorknockers' purporting to be undertaking surveys, and casual visitors enquiring about scrap metal removal services. Whilst some of these may be genuine, always ask for an official identity card, note vehicle registration details and if you have any concerns notify the police. The non-emergency number is 08452 777444.

There have also been reports of oil being stolen from domestic storage tanks. Should you see any suspicious activity please take notes and advise the Police immediately.

PARKING PROBLEMS

We continue to be plagued by motorists parking on double yellow lines, parking on sloped kerbs and parking on pavements, obstructing free access for pedestrians. We have asked South Hams District Council to 'police' these offences so please be warned and desist from these practises.

OVERHANGING BRANCHES/VEGETATION

At this time of year foliage from gardens and hedges often overhangs pavements and footpaths making pedestrian progress difficult, if not on occasions dangerous. Landowners are responsible for ensuring that foliage and hedges on their land do not infringe onto pedestrian areas – so please check yours are not causing problems.

PLANNING

Modbury Parish Council recommended refusal and SHDC refused the erection of a

new dwelling in the garden of Champernowne Cottage.

SHDC passed a request for work to a tree at 11 Oakwood Drive to the Tree Committee.

Modbury Parish Council recommended approval and SHDC granted approval for the following:

Hardwood roller garage door at 2 Broad Street; 27 Church Street internal works; Brownston Hall re-submission of alterations to roof windows and solar panels; Work to trees opposite Middle Traine.

Modbury Parish Council recommended the following applications for approval:

Little Sheephams – Renewal of application 35/0897/03/F – Conversion of barn to annexe.

Development site west of Tuckers Brook for two new dwellings.

Chapel Farm, Brownston - Construction of single storey garage/workshop.

5 Oakwood Drive – Re-submission of 35/0707/08/F – Demolition of single storey extension and garage with erection of two storey and single storey extensions and new roof to conservatory.

REORGANISATION OF LOCAL GOVERNMENT IN DEVON

The Boundary Committee has announced its draft recommendation. It is for a County wide Unitary Authority (UA) to replace the current Devon County Council and the eight District Councils (including South Hams DC). Plymouth and Torbay UAs are unaffected by the proposals, as are parish councils.

As a second possibility it says that a UA could be formed by merging

Exeter and Exmouth with the surrounding parishes, with the remainder of rural Devon being another UA. The proposal submitted by SHDC for three UAs to cover the area of Devon has not been selected for consultation, much to the disappointment of South Hams Council.

The Boundary Committee wants people to comment on its proposals. They should be sent by 26th September to:-

*Review Manager (Devon)
The Boundary Committee for England, Trevelyan House
Great Peter Street
London SW1P 2HW*

Email:

reviews@boundarycommittee.org.uk

You should have received (or will be receiving) a leaflet from South Hams with your electoral registration forms. This spells out in greater detail the issues involved.

The Parish Council has replied saying it is relieved that Plymouth is not expanding its boundaries, but that it has concerns about how the proposed "Community Board" based on Ivybridge will work; about whether the changes will be cost effective; about how the services currently delivered by the District Councils will be organised so as to be locally accountable; and about the workload of the elected members, who will have 7,500 residents to represent instead of the current 2,000 (on average). After 26 September the Boundary Committee will consider all the comments and will make a final recommendation to the Secretary of State at the end of December. There will then be another opportunity to comment directly to the Government, prior to a final decision being taken in February.

It may even be that this final decision is "no change".....

STRATEGIC HOUSING LAND AVAILABILITY ASSESSMENT

South Hams DC is doing a survey of land that could be used for housing in future plans. It has asked landowners to complete a form, available from the SHDC website www.southhams.gov.uk and return it by September 12th. NB. This doesn't mean that the site will be automatically included in future plans, but council officers will assess the suitability of the site.

POLLUTION RISKS IN OUR STREAMS

We have been told that bacterial pollution in streams is not unusual and it is not a good idea to bathe in waters of unknown quality, especially for small children. If older children or adults do go in they should avoid putting their heads under water and should wash their hands before eating. *(Not that this summer's been hot enough! Ed)*

LOST DOGS

From April South Hams District Council took over responsibility for dealing with stray dogs. Previously the task was shared with the Police.

Every year about 50 stray dogs are taken to local kennels either by dog wardens, the Police or the public. Owners will have to pay a fee to reclaim their dog from kennels.

A further 150 stray dogs are reclaimed by their owners before reaching kennels while around 10% are not reclaimed. Sadly some dogs are destroyed because their owners cannot be traced or the dog is unable to be re-homed.

Anyone finding a stray dog or wanting to report a lost dog should call SHDC on 01803 861234 and follow the advice given.

Dangerous Dogs: Any incidents involving dangerous dogs or dogs found worrying livestock should continue to be reported to the police, who will then investigate as a criminal offence. Devon and Cornwall Police can be contacted on 08452 777444.

Dog Fouling: It is an offence not to clear up after your dog if it has fouled in a public place, and a Fixed Penalty Fine can be issued.

Chips with everything: All dogs must have an identity tag on their collar showing the owner's name and current address. Ideally they should also be micro-chipped. Micro chipping costs from £15 and can be carried out at local veterinary surgeries and animal welfare centres.

TREASURER REQUIRED

For MODBURY ASSOCIATION OF RECREATION AND SPORTS (MARS)

This is an exciting time for MARS as we look to update and replace our facilities at the Recreation Field. The role of Treasurer is vital to this process, being responsible for the financial management of the Association as well as acting as a committee member.

If you have an hour or so a week to spare and would like to be involved, please contact the Secretary (Eileen Berry) for further information on 01548 831307.

**We look forward to hearing
from you!**

MODBURY OIL GROUP

The Modbury Oil Group is up and running, courtesy of Watson Fuels. The bulk buying scheme ensures members are able to obtain domestic heating oil at the most competitive price in the area.

If you are interested in joining please contact:

**Peter Preston by e-mail at:
prestons@onetel.com
or by phone: 01548 831324**

MODBURY CARING 100 CLUB DRAW WINNERS

MAY 2008

1 st	Helen Prosser	£15
2 nd	E C Lamb	£10
3 rd	H F Johnson	£5

JUNE 2008

1 st	Roy Smith	£15
2 nd	L M Lloyd	£10
3 rd	Pamela Maltby	£5

JULY 2008

1 st	H F Johnson	£15
2 nd	Nigel Spence	£10
3 rd	Pat Holness	£5

USED TONERS

A big Thank You to everyone who has sent in their old toners for re-cycling in aid of the MARS Project.

Sadly, we are now only able to accept the following Cartridges:

- ❖ Hewlett Packard **Laserjet** Cartridges
- ❖ Hewlett Packard and Lexmark **Inkjet** Cartridges

ALL mobiles are still very welcome

**Collection Point:
LUSCOMBE MAYE
CHURCH STREET, MODBURY**

SCHOOL REPORT

NO PAIN NO GAIN

So, were you inspired by the guts, glamour and glory on display in Beijing? Then pull on your trainers and join us for a 3-mile run to raise money for school funds.

Rest assured, though, that Modbury Fun Run is not yet an Olympic event and everyone qualifies to take part, stranger to a pair of trainers or not.

This will be the third annual fun run and organisers want it to be bigger and better than before, with runners, walkers and toddlers of all ages and abilities taking part. Come in fancy dress, if you like. Money raised this time will go towards buying new gym equipment for the school.

For those who really don't fancy it, the school field will be crammed with other activities. There's a children's run, live bands, a bar and barbeque, go-karts, a jungle fun bouncy castle and sumo wrestling competition amongst many other attractions. Retail therapy will be available in the form of market stalls. To book a pitch, contact Hilary Garry on 831468. They cost £5 for a private or charity stall, £10 for retail.

So, whether you're picturing yourself on a podium, are content to saunter the course, or just want a fun day out, there will be something for you. Be at the school field at 11am on Saturday, September 27th, ready for the off. Entry is £5 for adults, £3 for under 14s and £1 for the children's races.

ANYONE FOR TENNIS?

Memories of Wimbledon are fading as fast as the leaves on the trees but that's no excuse for mothballing the racquet until next year. Building on the huge popularity of its summer tennis coaching, Modbury Tennis Club is offering after-school sessions this autumn term. If you would like to reserve a place for your child, contact Sue Birch.

LIFE IN THE FREEZER

Despite facetious comments from some quarters that the swimming pool would get more use as an ice rink, it will remain open for use until the weather becomes too cold. (Cue uproarious laughter.)

BE THERE OR BE...LATE

There's an added incentive to be organised on the first day of term – the school day now starts at 9am sharp. Pick-up time has also changed and has been moved back to 3.30 pm.

Ellen

Modbury Tourist Information Centre

5 Modbury Court, Modbury
Devon PL21 0QR
Tel: 01548 830159

Summer Opening Times Monday to Saturday 10am – 5pm

Still lots to enjoy, (in spite of the weather), so here are just a few of the exciting events on offer in September. For further information on these and many others call in and see us. Don't forget we do have **discount vouchers** for some attractions.

DEVON OPEN STUDIOS 2008 6TH – 21ST SEPTEMBER

We now have the Devon Open Studios Arts Trail Guides. This fantastic very popular event runs from the 6th – 21st September and we have copies of all 9 guides.

KINGSBRIDGE AGRICULTURAL SHOW 6TH SEPTEMBER

WIDECOMBE FAIR 9TH SEPTEMBER

See you soon - *Sue Birch*

AMERICAN LITERATURE

This informal literary course of twelve lessons will consider the development of American literature from pre-colonial times to the present day. We shall examine some of the major themes pertinent to the emerging national literature, the construction of a national voice and the absorption or rejection of its multi-faceted heritage from the many cultures imported to and pre-existing on the North American continent.

There will be a coffee morning at the address below on Wednesday 24th September at which a full prospectus will be available, and places may be reserved. If you are unable to attend, give Ann a ring for information. Classes will be held on both Monday and Tuesday afternoons as previously.

Tutor: Ann Oakins M.A. PhD.
Tel: 01548 830550 **e-mail:** ann.oakins@virgin.net
Where: 1 Benedict Way
When: Commencing 2.30pm Monday 5th & Tuesday 6th January 2009
Duration: Sessions will run for 2 hours, plus 20 min. break
NB: There will be no class in half-term week **Fee:** £42



**The Royal
British Legion
Modbury
Branch**

Our **Annual General Meeting** will take place on **Monday 6th October** in the Modbury Club, commencing at 7.30 pm; all members are asked to attend. If you are interested in becoming a member of the British Legion please ring the Chairman, Bill Sloman, Tel: 830425. You do not have to be ex-service to join.

In August we held another street collection for the Poppy Appeal, which yielded the sum of £180.83. Many thanks to everyone who supported this event. Sometimes visitors to the town are surprised to find that we are collecting in the 'summer' but it does remind people that the Poppy Appeal is continuous and not just a November Remembrance Annual Appeal. The Legion is the UK's leading charity providing financial, social and emotional support to millions who have served and are currently serving in the Armed Forces. Currently 10.5 million people are eligible for our support and over 5000 people are helped each month.

During the next few weeks we shall be organising Coffee Mornings and Cake Stalls. Notices will be displayed to advise venues and dates. We look forward to receiving your continued support.

David Mitchell

**MODBURY SILVER
THREADS -
SEPTEMBER**

Tuesday 9th
Meeting in Club 1.45 pm

Tuesday 23rd
Trip to Sidmouth
10.00 am - £9.50



**MODBURY LOCAL
HISTORY SOCIETY**

**LECTURE PROGRAMME
2008-2009**

**Wednesday 10 September
Terry Pearson, from Paignton
- The White Hart**

Terry has researched the meaning of the White Hart emblem, familiar throughout the country. A creature of mystery and religious significance in medieval times and adopted by King Richard II as his personal badge.

**Wednesday 8 October
Bernard Hughes from
Exmouth - Inland Waterways
of England.**

The speaker is an expert on the Waterways and we look forward to a very interesting evening to which members of the Modbury Society are cordially invited.

**Wednesday 12 November
Susan Laithwaite from the
Devon Record Office in
Exeter.**

Now that we have successfully recovered the Modbury Tithes Map and had it digitally copied, Susan has kindly offered to come and describe the background and details of these maps and their functions.

**Wednesday 10th December
Annual General Meeting
followed by a Social Evening.**
Our popular Christmas
entertainment!

**Wednesday 14 January 2009
Michael Vyner from Torquay
- The Haytor Granite
Tramway.**

This talk traces the history of Granite and the historic tramway, following it from Haytor to Teignmouth, via the Stover Canal.

**Wednesday 11 February 2009
Felicity Goodall,** from Kingsbridge has produced a book with the title 'Lost Devon'. It will be interesting to find out her discoveries, and how she found them.

**Wednesday 11 March 2009
Ken Doughty** from Aveton Gifford with another talk. This time with the title 'Coping with the Poor of the Parish'. Ken's talks are always fascinating - no doubt this will be no exception!

**Wednesday 8 April 2009
Len Copley** returns - this time his illustrated talk covers the South Cornish Coast.

Meetings commence at 7.30 pm in The White Hart Assembly Room, Church Street, Modbury, by kind permission of the Management.

Annual Membership £5.00. Casual visitors welcome @ £2.00 per meeting. Annual Subscription due at first meeting on 10 September 2008.

*David Mitchell
01548 830446*

**MODBURY
MUSICATHON**

Well done to Alex Pitcher, James Aston and Matt Aston aka 'The Noise Boys'.

You all proved you know your stuff in the sounds department for the Musicathon.

Obviously your time at uni was well spent!

Way back in June (when we were all looking forward to a long, hot summer) Modbury Tennis Club organised their first Safari Supper with great support and hosting from fourteen households in the town. It was a great success and we all had fun finding our way from one mystery household to another for each course and enjoying all the delicious suppers provided.

There were several confirmed sightings of wild dog in the area and, early in the evening, there was even a report of a herd of elephant blocking the route to Long Park!! But as one safari-goer reported 'the natives were very friendly'. Late rains in the conservation area caused water levels to rise rapidly and one camp raised

the alarm when they found themselves marooned and surrounded by hippos and crocs and demanded a canoe and immediate evacuation! It is possibly more than a coincidence that this was the same group that had encountered the elephant and is more likely to be due to too much wine rather than changes in migratory patterns resulting from climate change.

However, it is certainly true that another party had a narrow escape during the floods and their hosts kindly provided them with a complete change of safari gear and home-made coconut ice cream to revive them after their determined trek through the torrential rain. And to round up, we were then all able to gather at The Bistro - so a special thanks to Annabel and Barry for coffee, biscuits and a chance to chat about our safari experiences.

We'll be having another one - so if you couldn't make it last time, we hope you'll be able to join us on Safari then.

JUNIOR COACHING

We are the envy of clubs far and wide, why... because we had so many enthusiastic (and talented) junior tennis players at our junior coaching sessions. So a big thank you to all who participated, to Modbury School for their support and to Matt and Harry for all their hard work. We had a fantastic end of term tennis tea and I can honestly say I have never seen so many biscuits and cakes disappear so quickly, puts me in mind of one of Rafael Nadal's serves!!

The coaching isn't quite over for this year as we are running the sessions for a further **6 weeks from 9th September** but we have to have sufficient numbers, so please get those forms to us as soon as possible.

See you on the courts!!



Modbury Tennis Club

1ST MODBURY SEA SCOUTS

This summer we've had another exciting packed programme, centred on activities and challenges needed to complete the Hurdlestone Challenge at the end of June. We have also been finishing badge requirements for the Scout Adventure Challenge/Outdoor Challenge/Fitness Challenge.



Two fun filled evenings at Courtlands Mountain Water Experience Centre saw us crate-stacking, completing the assault course and enjoying archery. Another evening at Dartmouth Scout HQ was spent rifle shooting and making bivouacs.

Although unfortunately our hike across Dartmoor had to be curtailed due to atrocious weather earlier in the year, we had good weather for the District Camp in June. This year it was held at Beesands with 'an incident hike' as the theme for Scouts which was ideal for us. We followed route cards

whilst solving puzzles and problems en route. Toasted marshmallows and sausages cooked over the fires we had lit at Dukes Mill went down a treat.

The Hurdlestone Challenge itself was great. Approximately 600 Scouts and Guides from all over Devon attend this annual event near Teignmouth. The hike on Saturday is 8½ miles with a good variety of challenges on the way. Our two teams did well and we look forward to taking part again next year.

The Sailing Day at Island Cruising Club, Salcombe, for Modbury Scouts and Cubs was excellent. We were well looked after and due to the wind (well that's our excuse!) most of us capsized at least once.

We look forward to welcoming new Scouts in September. Several of our Senior Scouts are going on to join the newly reformed Explorer Group. All credit to Edward Smith and Laura Thorns who have received their Gold Award – the highest award in scouting – Well done!

Lynn Green - Skip



MODBURY FRUIT & PRODUCE SHOW 2008

This year Modbury Show had 115 people enter, making it a record number of exhibitors. Despite the very bad weather we have all suffered this year, the show was still a great success and the Memorial Hall was once again a blaze of colour with all the exhibits. Mr J Ellis walked away with five cups and many first prizes, as usual. He works very hard in his allotment and garden to up his high standard; he entered 40 classes I really don't know how he does it. What a show we could have if Modbury were ever to get the allotments.

The cookery was well up on previous years and it was good to see a few men had entered in this section. In the class for a jar of marmalade there were nine entries, four of them men, and the class was won by Mr Mike Tillet. The best in show with her lemon cake was Miss Verity Ryder for which she was presented the cookery prize given by Mrs Scott Bevis. Mrs M Watts walked away with four cups. The handicraft entries were well down this year with only ten exhibits - I hope to see more next time.

The children did us proud this year with all their exhibits. The Modbury Brownies entered 12 decorated wooden spoons and there were some lovely ideas. Some had dresses made of paper, some had plaited hair and they all had lovely faces painted or drawn on them. The children of Modbury School had some wonderful exhibits in the class 'A drawing of my Teacher', which was won by Emily Marshall.

I would like to thank Beth and Tracy for encouraging the children to take part in the show. In the 'Animal made from fruit or vegetable' there was a beautiful penguin and a lovely woolly looking sheep made from a cauliflower. When it came to the children's prizegiving I don't know who were more excited - the mothers or the children.

Thank you to all the Vice Presidents for their support with finance and prizes; also all those who have given me donations for show funds. These have all been passed to the treasurer.

I would like to thank all the exhibitors who gave towards the auction, which was conducted by committee member, Mr David Edwards. He has now taken over from Geoff Fielden, who has been unwell and felt he was unable to continue. I would like to thank Geoff for conducting the auction so successfully for the show over the past few years.

A special thank you, to Joan for preparing such a delicious lunch and to the ladies - Peggy and the two Beryls - who worked so hard in the kitchen helping with lunch and afternoon refreshments; also to Pat for writing the results on the prize cards - we can't do without you.

I would like to thank Mr John Burns for all the help he gave me after the committee had set up the tables, placing all the class numbers and plates; also for presenting the prizes. I would like to mention Cicely Edwards who was a great help to me on show morning doing all the running with the prize cards - **thank you Cicely.**

**NEXT YEAR THE SHOW WILL BE HELD ON
SATURDAY 25TH JULY
AND I HOPE TO SEE YOU THEN.**

Angela Peters, Show Secretary

MODBURY SHOW WINNERS CUP LIST 2008			
Cup / Trophy	Classes	Class	Winner
BL Cup	Best in show classes 49-71	Hybrid Shallots	Mr J Ellis
Percy Rogers Cup	Best exhibit classes 72-84	Perennials	Mrs A Peters
Meatherel Cup	Most points classes 32-33	Dahlias	Mr W Perkins
Reuben Mears Cup	Most points classes 49-84	Cottagers	Mr J Ellis
Gladys Moysey Cup	Most points classes 1-40	Open	Mr W Perkins
Wilkinson Cup	Most points classes 85-105	Cookery	Mrs P Ryder
Axon Shield	Most points over 60s	n/a	Mrs M Watts
Children's Prize	Best exhibit class 128	Miniature garden	Matthew Hagger
Special Prize	Best exhibit classes 41-47	Floral art Petite	Brenda Lee
Treasurer's Cup	Most points classes 106-113	Handicraft	Mrs M Watts
Joan Law Trophy	Most points classes 41-46	Floral Art	Mrs B Lee
Ray How Trophy	Most points class 13	15 Potatoes	Mr W Perkins
Cookery Prize	Best exhibit classes 85-105	Lemon Cake	Verity Ryder
Art Palette	Best exhibit classes 114-118	Charcoal drawing	Christopher Brown
Children's Cup - Boys	Most points classes 134-145	n/a	Esmee Kitt
Children's Cup - Girls	Most points classes 134-145	n/a	Cecily Edwards
Marjorie Cross Trophy	Most points classes 124-133	n/a	Mrs M Watts
Mable Williams Trophy	Most points classes 147-149	Cookery over 60	Mrs M Watts
William Baker Cup	Best exhibit photography	Digital	Neil Barker
M & R Jackman Cup	Best exhibit class 83	Potted Fuchsia	Mrs A Peters
Pete's News Prize	Best exhibit class 123	Pre-School	Gabriel Brown
Special Prize	Best exhibit class 82	Vase of Flowers	Mr J Ellis
William Jackman Cup	Most points classes 73 & 74	Roses	Mr J Ellis
Bill Spink Cup	Best exhibit class 150	5 Flowers	Mrs M Watts
Pickles Prize	Best in Show classes 1-24	Decorative Dahlia	Mr W Perkins
SPECIAL PRIZES			
Mary Rose Rogers	Best exhibit class 149	Fruit Cake	Lesley Preston
Mrs V Flatman	Best exhibit Class 63	Coloured Potatoes	Mr J Ellis
Muriel How Cup	Best exhibit class 132	Drawing	Emily Marshall
R & N Mitchell	Best in Show classes 25-40	Hybrid Shallots	Mr R Jackman

MODBURY FAIR 2008

After a successful May Fair this year, the time has come for us to distribute the proceeds.

If you would like to be considered for a contribution please write to the Fair Committee explaining what you need the money for and how much it will cost.

Please send your letter to:

Pauline Ryder
68 Champernowne
Modbury
PL21 0RE

NO LATER THAN 20TH SEPTEMBER 2008

The meeting for the distribution of funds will be on
1st October 2008
at the Modbury Inn at 7.30 pm
ALL WELCOME

THE MODBURY SOCIETY

Visit to
Shilstone

On Saturday 20th September
At 10.30 am at Shilstone

*Robert Waterhouse will conduct the tour
and give a short talk on the history of the
house and gardens and what has been
uncovered in recent years*

Any member needing a lift please ring
Nicky Shepley on 830193

Basket Making Course at Modbury



As part of an initiative by Basketmakers South West Group we have booked the Modbury Memorial Hall for two courses.

Wednesday 1st & Thursday 2nd October 2008

&

Saturday 18th and Sunday 19th October 2008

Each course will take beginners through making a simple round basket. If you can only stay for day 1 it will be finished as a waste paper basket. If you can stay for both days you will build the basket higher and add a handle to make a shopping basket.

The one day course will cost £40 including materials. The two days will be £70 including all materials.

Please contact:

Richard Kerwood
Higher Barn Sidmouth Road Aylesbeare Exeter EX5 2JJ
Tel & Fax: 01395 233669
Website: www.windrushwillow.com E-mail: windrushw@aol.com

THE GREEN CORNER

Sustainability is a word we hear of more and more, and it's about using resources sensibly and responsibly – especially when we are so dependent on the earth's rapidly diminishing stocks of oil. One aspect of this is the amount of packaging we have been used to. But the days of buying goods multi-wrapped in plastic and card and cellophane along with the automatic supply of plastic shopping bags are rapidly becoming a thing of the past, and Modbury was in the forefront! Just a few good news examples:

Asda has reduced the amount of packaging by 20% on its own brands. Many of Boots gifts this Christmas will be packaged in recycled packaging materials, some of them reducing the weight from 470 grams to just 25 grams, with subsequent savings in transportation and storage.

Coca Cola and Britvic have redesigned many of their bottles, with the new lighter more compact bottles saving hundreds of tons of plastic and glass, reducing transport costs by 25% and saving many tons of carbon emissions.



You may have noticed the Co-op's own label whisky bottle which is now believed to be the lightest in the world!

Dairy Crest have an environmentally friendly innovative "Milk in a Bag" system, and Heinz save 9% of plastic in their new tomato ketchup bottle.

Sainsbury's, Waitrose, Kellogg's, M & S, Mars, Duchy Originals, Morrisons, Mullers, Warburtons, Northern Foods, Somerfield and Tescos and many others have realised that reducing packaging not only saves material, storage and fuel costs, but reduces the amount of waste we put into our bins. A few steps towards a sustainable world. Cheers!

Jeff Booth

MODBURY EDUCATIONAL FOUNDATION

A small grant is available to students who are resident in Modbury and are starting either a course of Further/Higher Education or a Vocational Course, this Autumn.

Applications, in writing, should be made by:

10th October 2008

To: Rev Neil Barker
The Vicarage, Church Lane
Modbury
PL21 0QN

ST GEORGE'S SUMMER FETE

Bishop Malanga from the Congo, who visited England with his wife, Mary, for the Lambeth Conference in July, opened St George's Church Summer Fete on Saturday June 21st with a rousing song. Whilst staying in Modbury for the weekend Bishop Malanga and his wife also visited Rockshop, preached at all the services on Sunday, both at Modbury and Aveton Gifford, enjoyed a bring and share Sunday lunch in the Vicarage garden with parishioners and attended evening service at Ringmore.

Due to inclement weather the venue was changed from the Vicarage gardens to the Church but thanks to South Hams Radio and Radio Devon announcing this several times during the Saturday morning the Fete was a huge success – better than ever, with crowds of people supporting the event from far and wide. The church buzzed with the sound of people of all ages having fun in what was a truly happy atmosphere.

Wonderful prizes were won in the lucky programme draw, donated by local traders. Numerous stalls could be enjoyed: plants, books, bric-a-brac, bottle stall, produce, cakes, children's games, face painting and competitions for young and old – including a quiz to tax the mind which was won by Angela Hickman.

Tom O'Neill was the doughnut eating champion for the second year running. There was plenty of opportunity to relax and enjoy delicious cream teas and cakes whilst being beautifully entertained by Modbury Primary School choir who sang delightfully.

Many thanks to everyone who supported this event by making,

baking, planting, running stalls, training the school choir, working hard behind the scenes and on the day and donated items for sale. Also a big thank you to everyone who came to enjoy the afternoon enabling us to raise over £1400 for church funds which is magnificent. Watch out for the date of next year's Fete and see you there!

Rachel Taylor

HARVEST AT ST GEORGE'S

We will again be supporting three local charities with our harvest gifts; the Salvation Army (Plymouth), the Shekinah Mission and Plymouth Women's Refuge.

Gifts of fresh produce, tinned and packet foods, or useful household products such as bin liners, washing-up liquid, etc will be very welcome. Please bring them (or flowers for decoration) to the church on the morning of Saturday 4th October. If you cannot do that you can leave them during the week at:

Bella's Flower Shop
in Broad Street
or 7 Brownston Street

Thank you for your help.
Bridget Robinson

WORSHIP GROUP WORKSHOP

On Saturday 20th September Mark Tailyour is coming to lead a Worship Workshop at St George's Church to encourage everyone who is prepared to offer their musical talent, however great or small, in leading worship in a contemporary style.

Do you play an instrument? Do you like singing? Come along. For details see the church noticeboard.

Neil Barker

Caroline Barker

Printmaker and Calligrapher

Is taking part in

DEVON OPEN STUDIOS
6th-14th September

10.30am- 4.30pm
(except Monday)

The Vicarage, Church Lane
Modbury PL21 0QN
01548 830260

All welcome

MACMILLEN COFFEE MORNING

At Bistro 35
10.00 – 12.00



Home Produce
Stalls
of Cakes, Jams
Savouries
Chutneys
and Raffle

Tickets sold on the day
Draw - 11.45 am

Anyone wishing to
contribute to stalls please
call 831429



**WE WOULD LIKE A NEW TREASURER
TO JOIN OUR TEAM**

We provide practical and creative support for young families and children after the death of a family member; be that child or adult.

SWINGS is a South West Charity. We are presently seeking to heighten awareness among the business community and encourage them to adopt and sponsor our charity.

We are a happy, positive group. We get enormous satisfaction from what we do on a part-time, voluntary basis. We enjoy each other's company and have fun as well as the serious side to the administration. Yep! We're terrific to work with.....

JOB DESCRIPTION

- To receive, check and record all monetary transactions
- To oversee, and present accounts and financial statements to the board of trustees.
- To ensure that proper accounts and records are kept, ensuring financial resources are spent and invested in line with SWINGS' policies, good governance, legal and regulatory requirements.

Contact: **SWINGS** 01803 393917
swings@tiscali.co.uk

Registered Charity No: 1099255

**CHERNOBYL
CHILDREN'S LIFELINE**

TOTNES AND IVYBRIDGE LINK

BREAKFAST CAFÉ

We are holding a Breakfast Café in
DIPTFORD VILLAGE HALL
SUNDAY SEPTEMBER 14TH
9.15 UNTIL 12 O'CLOCK

PLEASE JOIN US and MEET THE CHILDREN

This is a fund raising event to enable us to bring children from Belarus for a month enjoying our clean food, water and fresh air

For more information call
Sue Wyeth 01548 821201
www.ccll.org.uk/totnes

**MODBURY
MEMORIAL HALL**

**THE TRUSTEES OF THE MEMORIAL HALL
INVITE
THE PARISHIONERS OF MODBURY
TO ATTEND A**

SECOND PUBLIC MEETING

**REGARDING THE NEW PLANS FOR
THE EXTENSION OF
THE MEMORIAL HALL**

**THE PUBLIC MEETING
WILL BE HELD AT**

**THE MODBURY CLUB
31 CHURCH STREET
MODBURY**

**ON
SATURDAY 20TH SEPTEMBER
From 9.30 to 11.30 am**

KNIT AND NATTER



Are you interested in coming along to a knitting/crochet evening group in Modbury?

If so, contact Kay on 01548 830715 or call in at 'Wild Goose' 34 Church Street, Modbury

THANK YOU

Personal Announcement

Paddy O'Neil would like to express thanks to all those in Modbury who came to the celebration of his Civil Partnership with Rodney. We had a wonderful day with around one hundred and fifty guests, most of them from Modbury and representing a real cross-section of our local community.

We have tried to thank personally those who brought gifts. It was the presence of so many which gave us the biggest pleasure. Sadly there was some false and malicious press coverage inspired by the inevitable dash of prejudice, but who cares about that when we have the support of our families and all our friends?

MODBURY CARING

Office Hours

Monday 2 – 5 pm
Thursday 9 – 12 noon



EDEN TREE AND HEDGE CARE

- All tree surgery undertaken (NPTC Qualified)
- Felling/reduction/pruning
- 24 hr call out on trees
- Lawn mowing
- Hedge cutting
- Garden clearances
- Chipping and chainsaw work
- Fully insured to £5 million
- Strimming
- Turfing
- Pressure washing

Logs and wood chip for sale all year round
For a free friendly quote call Adam Sloman on
01548 830611 or (07760 324419)

Mrs C V Harrington MCSP; MMACP

Chartered Physiotherapist

Registered with the Health Professional Council
And all Health Insurance Companies

DOMICILIARY SERVICE / HOME VISITS



Tel: 01548 810023
Mobile: 07776393927

Member of the Organisation of
Chartered Physiotherapists in Private Practice



IVYBRIDGE
AND
DISTRICT
RNLI

Present and evening

with

GOOD TIME JAZZ

on

Saturday 18th October 2008
7 - 11 pm

at

The Memorial Hall
Modbury

Tickets and full details available
in Mid-September

SOUTH HAMS MOBILE LIBRARY

The Mobile Library will be at the following
locations on FRIDAY mornings

Aylestone Pk (arr 0930 - dep 0955)
Cromwell Pk (arr 1000 - dep 1015)
The Green (arr 10.20 - dep 10.35)

Also on MONDAY afternoons
(excluding Bank Holidays) at
Poundwell
(arr 4.00 pm - dep 4.30 pm)

CLEANER/FRESHER & NEWER LOOKING CARPETS & UPHOLSTERY AT AMAZING LOW PRICES



- ALL Stains Dirt & Odours Removed
- Affordable & Professional
- Local & Friendly Service
- LOW COMPETITIVE PRICES
- Residential, Business or Contract
- Fast Drying Times!
- In just 1-8 Hours



Call us now
for a FREE
no obligation
quote

CLEARVIEW-PLUS

Tel: 01548 550906

Mob: 07971 877772

www.clearview-plus.co.uk



1st Class Carpet & Upholstery Cleaning
from your local NCCA Approved Member
email: info@clearview-plus.co.uk

AQUA HAIR DESIGN

PRESENTS

Modern Organic Products

As the marketplace for
environmentally friendly products
continues to grow MOP provides a
natural alternative to consumers
who are concerned about the
impact that their beauty regime has
on their bodies and the earth

Open 'til 8.00 pm Fridays
No 7 Modbury Court
01548 831260

Drop your trousers at Pickles!

**Quality Professional Dry Cleaning
and Laundry by**



care for what you wear

**Available at Pickles of Modbury
Collection every Wednesday & Saturday**

Accountancy Services

- Accounts
- Tax Returns
- Start-ups and Business Plans
- Bookkeeping, Payroll & VAT
- Fixed fees in advance
- Self-Assessment and CIS

Contact Alex Smith (ACA) on

01752 551 888

To arrange a free initial, no
obligation meeting



TALL ORDERS

**Landscaping & grounds
maintenance**

*~lawn mowing ~hedge trimming
~brushcutting ~clearance.....*

HARD LANDSCAPING

~fencing ~decking ~patios

~natural stone walling

CHAINSAW & TREE WORK

UNDERTAKEN

Chipper & Mini-digger available

logs supplied

For a friendly free quote call James

Tall on 01548 831139 or mobile

07967258318 (fully insured)

drewpearce^{dp}

Chartered Surveyors and Estate Agents

**7 THE CRESCENT PLYMOUTH
AND 14 CATHEDRAL CLOSE EXETER**

THINKING OF MOVING?

In the present climate it pays to plan ahead.

Our prestigious offices in
EXETER AND PLYMOUTH

are well positioned to offer a professional
PROPERTY SALES SERVICE
throughout SOUTH DEVON.

We specialise in providing personal selling for individual homes and can offer either full marketing or you could talk to us about our more confidential low key service.

Contact **PHILIP HUGHES FNAEA 01752 201748**
For an informal and without obligation discussion



Kingsbridge Eye Care
1 The Promenade
The Quay,
Kingsbridge
Tel 01548 856 854

'Look no further...'

NHS/Private Eye Examinations
Everything from designer sunglasses
to low cost lens and frame packages
Contact Lens Specialists

Testing daily

**A personal and professional
service by Optometrists:**

Nigel Frost BSc (Hons) F.C.Optom,
Angela Hickman BSc (Hons) F.C. Optom
Kathryn Poole BSc (Hons) M. C. Optom

Nigel Frost
Optometrist
3 Chene Court
Modbury
Tel 01548 830 944





MARTIN LEY
PLUMBING & HEATING

- Oil Installations, Servicing & Repairs
- Unvented Cylinders
- Bathrooms & Showers
- General Plumbing

Tel: Mobury 01548 830609
Mobile: 07811 934551

A.R.B.
GARDEN SERVICES

EXPERIENCED
TRADITIONAL GARDENER
MAINTENANCE &
SENSITIVE RESTORATION
CV AND
REFERENCES AVAILABLE

Alan Boyce
16 Cromwell Park Modbury
Ivybridge Devon PL21 0RS

01548 830747
07989 415385

Wild Goose

34 Church Street,
Modbury, PL21 0QR

01548 830715

Stockists of Rowan &
Colinette wool/patterns

English Blue & White China

Various Range of jewellery

Fashion Accessories

Pine Furniture

GOLDWELL
Hair Cosmetics

LAMAUR
Hair Care Products



a new religion for hair

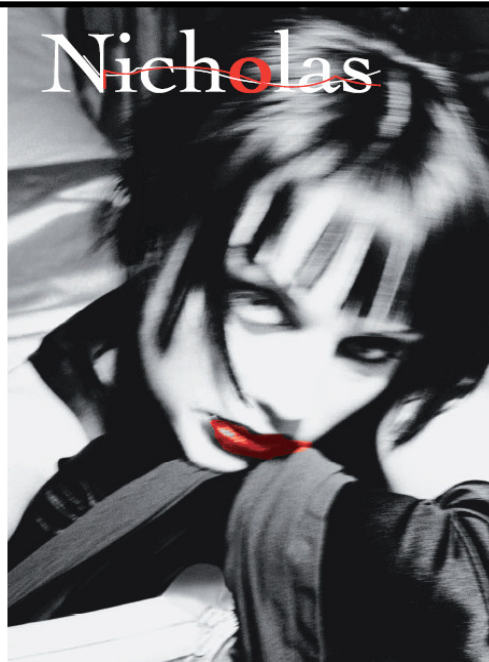
dermalogica

Beauty Therapy

- Skincare Treatments
- Holistic Massage
- Reflexology
- Body Firming and Reducing Treatments
- St. Tropez Spray Tanning
- Acrylic Nails
- Waxing
- Manicure and Pedicure
- Eyelash and Eyebrow Treatments

Early morning or late night appointments available.

London House,
Church Street, Modbury, S. Devon
Tel: (01548) 830152



Nicholas

**MODBURY
BADMINTON
CLUB**

Memorial Hall
Tuesdays

7.30 – 10 pm

New members always
welcome

For further information please
contact:

Gill Jolly

Tel: 01548 831263

KITCHENS BY
DeZine

Form and Function
Working in Harmony

Our services provide you with a one point of contact for all your needs and we offer both a trustworthy and reliable service but also one that remains personalised to you.

Our team of highly trained kitchen designers can cater for your every need
- no matter how small or large it may be.

t. 01548 830 819 f. 01548 831 519
27 Church Street □ Modbury □ Devon □ PL21 0QR

info@kitchensbydezine.co.uk
www.kitchensbydezine.co.uk

Advertising Tariff for The Messenger

In order to support the publication of The Messenger, advertising relating to business or of a commercial nature will be charged at the rates shown below.

Information for community use will continue to be published free of charge.

Single Insertion

1/9 th page	£10.50 per insertion
2/9 th page	£21.00 per insertion
1/3 rd page	£31.50 per insertion
1/2 page	£42.00 per insertion

Three Insertions

1/9 th page	£8.40 per insertion
2/9 th page	£16.80 per insertion
1/3 rd page	£25.20 per insertion
1/2 page	£33.60 per insertion

Six Insertions

1/9 th page	£6.30 per insertion
2/9 th page	£12.60 per insertion
1/3 rd page	£18.90 per insertion
1/2 page	£25.70 per insertion

Eleven Insertions

1/9 th page	£4.20 per insertion
2/9 th page	£8.40 per insertion
1/3 rd page	£12.60 per insertion
1/2 page	£16.80 per insertion

Artwork of good black and white copy to be supplied.
Payment must be made in advance.

Cheques should be made payable to 'Modbury Parish Council' and sent to The Parish Office, 6 Modbury Court, Church Street Modbury PL21 0QR.

**For further information
please contact**

**David Hansford on
01548 830222**

MODBURY PARISH COUNCIL PARISH OFFICE

6 Modbury Court, Church Street
Modbury
Tel: 01548 830222
e-mail modburypc@tiscali.co.uk

Hours of Business-
Mondays 9.00am-1.00pm

Parish Surgery
10 – 11 am every Saturday

Planning Applications

Notices of planning applications lodged with SHDC are displayed on the Parish Noticeboard outside the Post Office. Copies of plans relating to these applications can be inspected at the Parish Office during above office hours or when a Councillor is on duty.

Contacting Parish Councillors

Parish Councillors attend the Parish Office, on a rota basis, on Saturday mornings from 10.00 - 11.00am. Should you have any parish matter you would like to discuss come along to the Office at 6 Modbury Court. You can also call in to the Office on Mondays from 9.00am - 1.00pm and speak to the Clerk, David Hansford.

He can also be contacted by phone on 01548 830222 or e-mail at modburypc@tiscali.co.uk

At all other times you can leave a message either by phone or e-mail (see above) or alternatively you can write a letter or speak at the public forum held at the beginning of each monthly meeting of the Parish Council, held on the second Monday of each month at 7.00pm in the annexe of the Memorial Hall.

MESSENGER CLOSING DATE

*The closing date for the
October Messenger is
16th September 2008*

Please send all copy, by e-mail to prestons@onetel.com or deliver to the **Parish Office** (please note that all advertisements should be submitted **ONLY** via the Parish office – see below).

Payment for all advertisements must be made in advance. Cheques should be made payable to 'Modbury Parish Council' and sent to The Parish Office, 6 Modbury Court, Church Street, Modbury PL21 0QR. For further information please contact David Hansford on 01548 830222.

The Modbury Messenger is published by The Modbury Parish Council and is printed by SHDC, Follaton House, Totnes.

The views expressed in the Modbury Messenger do not necessarily represent those of The Modbury Parish Council.

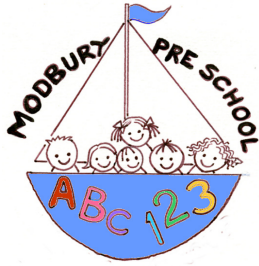
SOUTH HAMS DISTRICT COUNCILLORS

Our South Hams District Councillors are:

**Geoffrey Fielden –
830916, or
[councillorfielden@
southhams.gov.uk](mailto:councillorfielden@southhams.gov.uk)**

**Mark Lawrence –
830423, or
mark.lawrence@totalise.co.uk**

Our representative on DEVON COUNTY COUNCIL is William Mumford and he can be contacted on:
**01752 873002 or
william.mumford@devon.gov.uk**



**FULL DAYCARE
5 DAYS A WEEK**

Outstanding OFSTED Report
Among top 3% of country!
Your 2½ - 5 year old can now
attend preschool all day

Toddler Group Thursday
1.15 - 3.45 pm, all welcome, with
parent/adult

2 year olds are welcome
Tuesday to Friday afternoons
Please phone or drop by to enquire
about sessions to suit your needs.

Modbury Preschool
Back St, Modbury
01548 831477

Registered Charity No. 1039616

ROCKSHOP

Fridays 7.00 - 9.00 pm

Modbury School Hall
10p Entrance

Younger Group Ages 8 - 11
Older Group Year 7 Upwards

Hockey, Basketball
Giant Skipping, Football
Craft, Drama, Tuckshop
and also for the older group:
Community Activities, Occasional
Discos and Live Bands.

A Christian Youth Group
Established in Modbury
For over 30 years

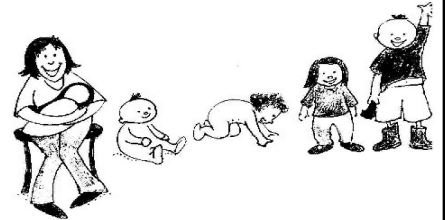
EVERYONE WELCOME

Contact David - 831589
or Simon - 830857

MODBURY TIDDLERS

A Community Run Group for
Small People aged 0 - 5
(and for the people who wipe
their noses!)

**PLAYTIME FOR THEM!
COFFEE AND A CHAT
FOR US!**



Fridays 9.30 - 12 noon
£1.50 per child
@Modbury Memorial Hall

Enquiries ring Angie:
01548 831139

Selling Your Home?

For a **FREE** no obligation
pre-market appraisal
contact **Luscombe Maye**
Estate Agents

01548 830831

Your Property - Our Passion



Ivybridge
01752 690077

Kingabridge
01548 857474

Modbury
01548 830831

Newton Ferrers
01752 872417

South Brent
01364 646170

Totnes
01803 869920

Yealmpton
01752 880044

