



MODBURY MESSENGER



The Glamour Models - See Page 5

BEST KEPT VILLAGE COMPETITION

It is time for one last "Tidy up" before the final judging. Please can we all keep the area in front of our houses free from litter and clear away weeds growing in the pavement.

Another area which could still cost us points is the dog mess. If you put your dog mess in a bag, please then either take it home with you or put it in the special bin in the car park, not in the Churchyard or by the side of the road. There is a lot of rubbish left around the seat outside Red Devon Court. This does not all come from Take Aways. It is left by people using the seat and then leaving their rubbish, although there is a large rubbish bin opposite, outside the Co-Op. Otherwise I think the town is looking pretty good and ready for the inspectors.
Thank you.

Nicky Shepley

Hon Secretary, Modbury Society


**The first ever
Modbury Musicathon**
 **Takes place on** 
Sat 26th July
At the recreation field from
12 midday to 12 midnight

**A range of different musical styles will
play throughout
as well as some belly dancing**

Fun for all the family with face painting, games,
BBQ, cakes, ice-creams, Ram Roast and bar.
So make a day of it, bring you rugs and warm
clothes for the evening



**The event is in aid of St Luke's Hospice
Programmes will be on sale mid July from
various shops-
Look out for the signs**

You can dip in and out - so don't forget to visit
the fruit and produce show
in the Memorial Hall too!

**For further information or to book a slot
to play call Sarah Wyatt 830458**

AROUND THE CHURCHES



St Monica's Roman Catholic Church

St Austin's Priory
01752 892606
Sundays
9.00 am Mass
Everyone Welcome

Modbury Methodist Church

Superintendent Minister

Rev John Beadle
(Tel 01548 852073)

Ministers

Rev Gordon Davis
(Tel 01803 862350)
Rev Margaret Johnson
(Tel 01548 531455)

Sunday Services

10.30 am in
St Monica's Church

This is a small friendly group
Do come and join us

July Services

6th – Dr J Prebble
13th – Mrs H Hibbard
20th – Mrs J Harvey
27th – Rev J Beadle
(Holy Communion)

August Services

3rd – Rev M Johnson
10th – Mrs C Tucker
17th – Mrs J Rotas-Clements
24th – Rev J Beadle
(Holy Communion)
31st – Mr & Mrs R Hamblin

Can you see?



The Narnia series of books by C.S. Lewis who became a Christian later on in his life, give a picture of Christian faith, although many people who read them are unaware of it.

In *The Lion, The Witch, and the Wardrobe*, the four Pevensie children, Peter, Edmund, Susan and Lucie, discover the way into the unseen world of Narnia. They meet the great lion Aslan (who represents Jesus). Aslan offers himself for sacrifice in the place of Edmund, but after being killed he comes back to life and with his help, the four children defeat the White Witch and her forces. To the land which was always winter, comes spring.

In *Prince Caspian*, the children return to Narnia (this time through a tube station near London's Trafalgar Square). Although they are only a year older, 1,300 years have passed in their former kingdom. The evil Miraz has stolen the throne from Prince Caspian and forced the true Narnians into hiding and the wonder of the old Narnia seems to have faded.

Aslan has not been seen for centuries and some of the Old Narnians feel that Aslan has abandoned them. When Lucy says that she saw Aslan, Peter asks why he didn't see him too. Lucy replies, "Maybe you weren't looking."

The search for Aslan is a metaphor for faith. Following Aslan is the most important thing you can do—especially when no one else can even see him. Will Moseley the person who plays Peter in the film says:

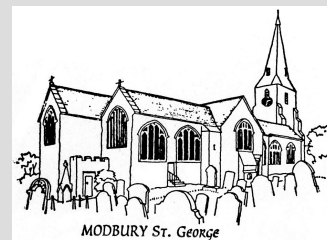


"You believe, *then* you see. People say every day 'if God is there why can't I see him?' Peter, Susan and Edmund say the same thing, 'why didn't I see him, he is an unbelievably huge lion why can't I see him?' Because they don't believe. When Peter feels remorse, then the magic starts to happen. Almost like you open yourself up to believe, then you can see."

Enjoy the film (be aware there are a lot of battle scenes). You'll also meet characters like Reepicheep the valiant mouse, and Trufflehunter the faithful badger. It may inspire you to read the book and perhaps take a step of faith yourself and see more than you did before.

We will be using "Prince Caspian" material at our Family services on July 27th.

Neil Barker



St George's Parish Church, Modbury

*Give love - Receive strength
Jesus is for everyone*

SERVICES AND EVENTS IN JULY

Wednesday 2nd

7.30 am – Worship Group Practice

Sunday 6th

10.30 am – Family Communion led by Charmion Mann

Sunday 13th (Sea Sunday)

10.30 am - Holy Communion

Wednesday 16th

7.30 pm – Modbury PCC

Sunday 20th

10.30 am – Holy Communion

Thursday 24th

7.30 pm – 'Messy Church' Meeting in the Lower Vestry

Sunday 27th

8.00 am – Holy Communion
9.30 am – Family Service – Prince Caspian Theme

WEEKDAYS

9.00 am Morning Prayer

THURSDAYS

9.30 am Holy Communion

**St George's & St Andrew's
are open every day for prayer**

PLANNING

Modbury Parish Council made the following recommendations:

Brownston Hall – Re-submission of 35/0381/08/F alterations to include new roof windows, re-slating of roof and installation of solar panels - to be approved.

27 Church Street – Construction of inner shell wall – to be approved.

Field at SZ670496 Kennedon Farm – Reserved matters application for erection of agricultural building – to be refused.

SHDC granted the following applications:

Deer House, 22 Church Street – Alteration to external steps.

Hillcrest House, 18 Brownston Street – Consent to install handrail to front steps.

Greenovens – Erection of agricultural barn.

The following application has been withdrawn:

5 Oakwood Drive – Demolition of single storey extension and erection of two storey extension.

MARS 50 – 50 LOTTERY RESULTS

May 2008

1 st :037	Pauline Ryder	£27.50
2 nd :043	Gareth Janes	£16.50
3 rd :104	Mike Passman	£11.00

June 2008

1 st :095	Gill West	£29.00
2 nd :033	Mrs Rickman (Snr)	£17.40
3 rd :088	Miss H Jones	£11.60

MODBURY AFFORDABLE HOUSING – A REMINDER

In May we said that the Parish Council was looking at ways of getting more affordable housing for local Modbury people (or those who have strong links to Modbury but have moved away). If you want to be considered for such housing, either rented or part-owned you have to be registered with the appropriate organisation.

- ❖ For rented housing it is SHDC, phone 01803 861234
- ❖ For shared ownership, it is Home2Own, phone: 0800 975 1915

We would also like to know what the level of demand is, so could you please tell the Parish Clerk, David Hansford, who will treat the information in confidence. His contact details are on the last but one page of the Messenger.

THE BOUNDARY COMMISSION

The Boundary Commission is currently considering options to change the current Unitary Authority Boundaries in Devon. The Modbury Society, affiliated to the CPRE (Campaign for the Protection of Rural England) fully endorses its view that a proposal coming forward for a South Devon and Dartmoor Unitary Authority comprising South Hams District Council, Teignbridge District Council, West Devon Borough Council and the Dartmoor National Park would be the best option for Modbury.

If you think this to be so please say so now to The Boundary Committee for England, Trevelyan House, Great Peter Street, London SW1P 2HW or email - reviews@boundarycommittee.org.uk

*Roger Gage, Chairman
Modbury Society*

USED TONERS

A big Thank You to everyone who has sent in their old toners for re-cycling in aid of the MARS Project. Sadly, we are now only able to accept the following Cartridges:

- ❖ Hewlett Packard **Laserjet** Cartridges
- ❖ Hewlett Packard and Lexmark **Inkjet** Cartridges

All mobiles are still very welcome

**Collection Point:
LUSCOMBE MAYE
CHURCH STREET, MODBURY**

MESSANGER ON HOLIDAY!!

Please note that, as usual, there will be no Modbury Messenger produced in August.

The next issue will be distributed at the beginning of September and therefore the deadline is 16 August 2008.

Have a good summer.

Lesley Preston



THE GREEN CORNER

GAIA IN A NUTSHELL

Planet Earth has a wonderful, self-regulating system that has evolved so that the Earth's temperature and atmosphere remain reasonably steady. For example plants in cold climates have darker leaves to absorb more of the sun's heat, whereas in hot climates lighter green leaves reflect some of the heat back out of the atmosphere. Rainforests have a permanent cloud cover reflecting masses of energy back into space. Animals produce carbon dioxide and plants absorb it, producing oxygen for animals to breathe and carbon for them to eat as food. Of course it's much more complicated than that, but in its most simplistic form it sounds like and is Paradise.

When humans discovered oil and coal (basically stored carbon) we started to produce a lot more carbon dioxide than the Earth's plant life can absorb – in fact about 3 times as much. To avoid climate change, humans must emit no more than 12 billion tons, about 2 tons each. In the UK carbon output is about 10 tons per person but luckily, for us anyway, lots of people in southern countries emit hardly any so the average is 6 tons per person. If we can reduce our carbon emissions by just 5% a year, in 31 years time we will reduce it to 2 tons per person. Perfect! – assuming there is no increase in world population or cars or planes, and that we don't cut down any more rainforests.

Another solution would be to find another 3 or 4 Planet Earths. The Mars exploration mission is beginning to look interesting

www.lowcarbonlifestyle.org is a good source of information on how to reduce carbon and at the same time improve our lifestyle and quality of life.

Jeff Booth

Modbury Rovers Junior Football Club



Chair: Colin Low (01548 830089)

On behalf of MRJFC may we say a heartfelt thank you to all those who supported our Car Boot Sale and football day on 1st June. Having been postponed from a very wet and windy bank holiday Monday, we were blessed with blue skies and sunshine. Approximately 30 cars sold their wares, whilst the boys and Lucy Romney, played some excellent football. We would like to commend our youngsters on not only the standard of their play, but also the wonderful team spirit and camaraderie displayed by all.

We were delighted with the sum raised at the event and those well-filled 'Wilkinson's' bacon butties certainly went down a treat. We will be using the funds to purchase much needed kit.

Our budding Beckhams have come on enormously over this past year. Heartfelt thanks to Jim Ogle for his coaching skills, to Peter Watts, Richard Teague and Mike Andrews for running around muddy, wet pitches shouting encouragement, and to Colin Low for the surprisingly endless administrative task of setting up the club. Many thanks also to Jim Petford for his support and for voluntarily taking on the task of securing the field on a daily basis.

Training starts again 30th August on which date there will be a friendly match for the Under 9s. In the meantime feel free to join us on Bigbury beach on Saturday 28th June for cricket/body-boarding etc, and then at the recreation ground on Saturday 12th July for rounders and a BBQ (bring your own food).

The start of next season will see our Under 11s joining the local Pioneer league, and Richard and Mike will have completed their FA training course. We are planning, through available grants and fundraising, to lay a junior pitch on the left hand side of the field and also are giving our full support to **MARS** in their efforts to put up a new pavilion with changing

rooms/showers/kitchen to replace the hut. The re-scheduled football tournament will be held on Saturday 6th September. Refreshments will again be available.

Training is on a **Saturday morning 10am until 11.30/12.00 at the recreation ground** and is open to all **children 6 years and over**. It costs £1 to join as a family, and £1 subs at each training session attended.

Come and join us, have fun and put Modbury Rovers on the map!

*Eileen Berry, Secretary 831307
robindavidberry@mac.com*

ROAD TRAFFIC INCIDENT BROAD STREET MAY 2008

A report by a local motorist who witnessed the potentially dangerous incident

"Last month whilst turning into Broad Street from Brownston Street, I noticed that a car parked outside Pickles had started to move across the road heading for the bakers. At the bus stop there was a group of local parishioners waiting to travel to Plymouth. A young woman who realised that, as the car was without a driver, there was a potential accident waiting to happen, leapt into the road and into the car, where she rapidly applied the handbrake, before locating the owner of the car".

This remarkable reaction deserves recognition - if only in our Messenger. The lady in question was in fact Lynn Weeks. Thanks Lynn. You averted what could have been a serious accident.

R Sims

MODBURY SOCIETY SUMMER PARTY

Saturday 12 July : 7 - 9 pm

at 1 Traine Paddock
(off Brownston Street)
Opposite Silverwell Park
by kind permission of
Mr & Mrs P Hyde

**Tickets on sale at Pickles
£4 to include a light buffet**

(Please buy tickets in advance
to help with the catering)

Modbury Tourist Information Centre

5 Modbury Court, Modbury, Devon PL21 0QR
Tel: 01548 830159

Summer Opening Times

Monday - Saturday 10 am - 5pm

WHAT TO DO

AND WHERE TO GO THIS SUMMER

JULY

- 5th Ivybridge Filham Fun Day
- 6th-11th Merlin Rocket Week,
Salcombe
- 11th-20th Ways With Words -
Dartington
- 12th Ugborough Village Fair
- 14th - 19th Music of the Night -
Citadel, Plymouth
- 19th - 26th Kingsbridge Fair Week
- 30th Yealmpton Show
- 31st Totnes Show

AUGUST

- 3rd - 9th Salcombe Town Regatta
- 4th - 16th Newton & Noss Regatta,
Firework Display on the 16th
- 10th - 17th Totnes Carnival Week
- 13th & 14th National Fireworks
Competition - Plymouth
- 23rd - 25th Plymouth Navy Days
- 23rd - 25th Hope Cove Festival
- 28th - 30th Dartmouth Royal Regatta

For full details of the above and many other exciting events call in to the Information Centre and see us

Have a great summer!

Sue Birch



Handbell Ringers

required
to form a new team in

Modbury

A set of 54 bells (over 4 octaves)
awaits willing hands
to make beautiful music.
No previous experience necessary.
An ability to read music is an
advantage
but not essential.

For more information contact

Gill Jolly
Tel. 01548 831263

SCHOOL REPORT

A PASSION FOR FASHION

There are reports of pandemonium in Paris following Modbury's bid for fashion capital status with a stunningly successful fundraising extravaganza which brought in a staggering £750 for the school.



Around 140 people packed into the White Hart to see some of the best fashion and beauty ranges the South Hams has to offer hit the runway on the backs of a string of lovely local models. Fashion impresario Claire Hagger coaxed household names Kate, Liz, Hilary, Nessa and Emma out of retirement and into the limelight for the occasion whilst giving newcomers Sarah, Heather, Claire and Zoe their first taste of the big time.

Cool summer styles from Silhouette in Kingsbridge and Beach Divas and Top O' the Steps in Modbury were complemented by show-stopping hats from The Hat Studio and beautiful bouquets from Bella's Flowers. Backstage crimping and elegant make-up from the staff at Nicholas Hair and Beauty lent a thoroughly professional gloss to the event which was compered in style by Liz Hughes.



Thanks to everyone who worked so hard to make the evening such a success, to the White Hart for providing a fantastic venue free of charge and to John Hardy for the much coveted tickets.

COME ON IN – THE WATER'S LOVELY

And that's official. Swimming is back on the curriculum now that the school's water testing procedures are in place. The children are already having a splashing time practising for the swimming gala scheduled for July 7th, failing that July 10th. At the time of writing, details of first aid training for family swimming had not been finalised but will be available at the school. So what are you waiting for? Pull on your armbands and take the plunge.

BERRY NICE

Half a ton of strawberries, several vats of cream, twenty gallons of tea, first class entertainment, a sea of desirable merchandise – and no need to travel to W12 to get your share. Wimbledon may be over for another year but that other famous excuse for a berry blow-out, the Strawberry Fete, is almost upon us – this Friday, 2pm at the school. There's still time to donate items for sale or to offer your help with serving teas or manning stalls. Contact Kim Wilson or Emma Harvey-Doddridge.

END OF TERM REPORT

So that's it. Another school year has passed in a blur of harvest, bonfire, Christmas, performing arts week, Easter, SATs, swimming and the Strawberry Fete.

The frustrated teacher in me is itching to write 'must try harder' or 'could do better', but it's difficult to see how the school could top a year like this one. Much has already been said about the outstanding Ofsted report which has eclipsed all the staff and pupils' other achievements and there's nothing more to add to this particular school report other than to fall back on that old favourite – 'keep up the good work'.

Ellen

CRE8 CLUB

Children's Craft Workshop
Crafts, music, stories

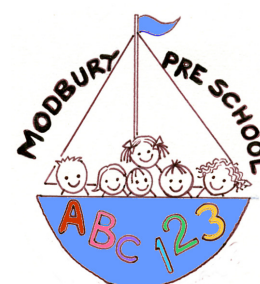
5 – 11 year olds
in St. George's Church
20th, 21st & 22nd August
2-4pm

£2 per afternoon to cover costs

**Limited places – reply by
12th August**

Booking form
from:

Caroline Barker
(830260)
The Vicarage
Church Lane
Modbury



**FULL DAYCARE
5 DAYS A WEEK**

**Outstanding OFSTED Report
Among top 3% of country!**
Your 2½ – 5 year old can now
attend preschool all day

Toddler Group Thursday
1.15 – 3.45 pm, all welcome, with
parent/adult

2 year olds are welcome
Tuesday to Friday afternoons

Please phone or drop by to enquire about
sessions to suit your needs.

Modbury Preschool
Back St, Modbury
01548 831477

Registered Charity No.1039616

As an acknowledgement for the many interesting school reports provided by Chris Birch, I thought that an extract from the 'Baker Collection' that related to the school was appropriate.

Roy Sims, Modbury Heritage Co-ordinator

INTERESTING EXTRACTS FROM SCHOOL LOG 1871 – 1916

1871 July 20 th	Received set of books and slates from Vicarage.
Aug 28 th	Many girls absent gleaning.
1872 Feb 26 th	Gave children home lessons to please parents.
May 6 th	Modbury Annual Fair. Only one girl present.
July 1 st	Many absent for hay harvest.
Aug 12 th	Only five present. Open air concert in Barrack yard. Many absent gleaning.
Oct 7 th	Emma Fox sent home to fetch school money. Did not return for the week.
1873 March 10 th	Coal famine. Many children sent to gather sticks for parents.
April 23 rd	New organ opened in the church.
April 28 th	Week's holiday for Modbury Fair.
Sept 8 th	Jane Hingston (in service) allowed to return to compete in examination.
June 13 th	Children absent through cattle market. Waxworks in town in afternoon.
Nov 23 rd	Kept in children for neglecting home lessons.
1875 Jan 18 th	Mr Harris called to pay for the children under supervision of the Poor Law.
July 26 th	Sent parcel of needlework to Kingsbridge to compete for prize offered by Kingsbridge Sewing and Knitting Association.
Aug 22 nd	Received prize money – pleased with success of children.
Dec 13 th	Annie Bartlett kept from school. Mother refused to pay 2 pence instead of 1 pence. Girl being passed 7 th birthday.



**The Royal
British Legion
Modbury
Branch**

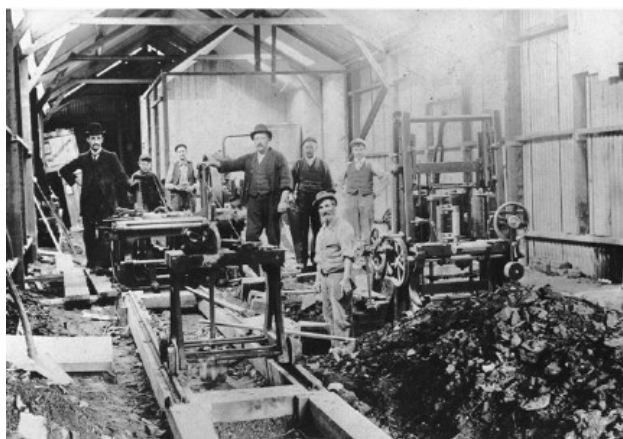
The next
General
Meeting will
take place on

Monday 4th August at the Modbury Club, commencing at 7.30 pm. New members welcome. Details available from our Chairman – Bill Sloman, Tel. 830425.

The Poppy Appeal continues throughout the year and during the summer we shall be organising fund raising events – such as Coffee Mornings and Cake Stalls. Watch out for the posters which will indicate venues.....

David Mitchell

DO YOU HAVE MEMORIES OF REEVES TIMBER YARD?



This is a picture of the first sawmill, part of F J REEVES, a business which began in Totnes in 1891. From this small beginning the firm went on to operate for more than 100 years, becoming one of the town's largest employers.

The Totnes Heritage Group, with support from the Heritage Lottery Fund, is aiming to record the history of the Reeves timber yard and its impact on the local economy throughout the 20th century. Working in conjunction with the Totnes Image Bank, the Totnes Heritage Group is planning to produce an illustrated book about Reeves, as well as mounting a large photographic exhibition.

We are eager to talk to people who worked for Reeves, or anyone who lived in Totnes and had any dealings with the firm, or may have memories or photographs of the various activities connected with the timber yard.

Please contact either Diana Reeves on 01803 863170 or the secretary of the Totnes Heritage Group on 01803 867461 or e-mail thkendall@phonecoop.coop

ROCKSHOP

Fridays 7.00 - 9.00 pm

Modbury School Hall

10p Entrance

Younger Group Ages 8 - 11

Older Group Year 7 Upwards

Hockey, Basketball, Giant Skipping, Football
Craft, Drama, Tuckshop

and also for the older group: Community Activities,
Occasional Discos and Live Bands.

A Christian Youth Group
Established in Modbury
For over 30 years

EVERYONE WELCOME

Contact David – 831589
or Simon - 830857



MODBURY LOCAL HISTORY SOCIETY

SUMMER OUTING – MONDAY 14 JULY

Our destination this year is **Forde Abbey**, near Chard. Coach leaves Modbury Post Office at 9.30 am. Cost £17.50, which includes a guided tour of the house visit to the famous gardens (30 acres) and coach fare. Light lunches available.

We have booked the guided tour for 12 o'clock, then we can have lunch before visiting the gardens.

Justine and Peter have kindly allowed us to put a list in the Post Office. Ring David Mitchell on 830446, or Mary Timmis on 803768, if you require further information or if you would like us to put your names on the list.

Forde Abbey was 2006 South West Tourism Small Visitor attraction of the year and is well worth seeing. The gardens include the spectacular Centenary Fountain, England's tallest powered fountain.

We welcome everyone to join us; you do not have to be a member of the Society!

Since advertising this outing (in June) most of the seats have been booked, so check the list in the Post Office if you are intending to join us.

Many thanks to those who have already booked – you can pay on the coach, cash or cheque (made out to 'Modbury Local History Society').

Our 2008 – 2009 series of lectures will begin on **Wednesday, September 10th** – Programmes are being finalised and some very interesting speakers have been booked....

David Mitchell

MODBURY CLUB SUCCESSES WINTER SEASON 2007 - 2008

The Euchre Team, under the Captaincy of Mrs S Hannaford, came top of the League, having played 30 matches and won 23. Sue Hannaford and her husband, Gerald, were runners up in the League Knock Out Competition.

The snooker A Team in Division One of the Totnes League were 4th in the League, winning the Division Knock Out Trophy. Our number one player, Michael Collings, won the division individual competition, the Handicap Knock Out Competition, and the season's highest break competition of 75.

The B Team in Division Two had an enjoyable time but were not so competitive.

The Darts Team have had an improved season and are pleased to report that they will be higher up the League this season. They have another match to play to complete their long season.

Anyone wishing to play any of the above sports please contact the Secretary, Geoff Fielden, on 01548 830916.

SOUTH HAMS (WEST) LIBERAL DEMOCRATS

Invite you to

CELEBRATE SUMMER AND MEET OLD AND NEW FRIENDS

At Anniversary House
Poundwell Street

6.00 pm 'til 8.00 pm
SATURDAY 2ND AUGUST

Refreshments Provided

Tickets @ £6
From Mark Lawrence 830423
Or Mary-Rose Rogers 830310

OPEN GARDENS

Sunday June 1st
in aid of
St George's Church

What a wonderfully successful community afternoon we had; the weather was kind – hot and sunny enabling us to have a really enjoyable time.

Many thanks to everyone who worked so hard to open their gardens to the public, sold tickets, baked cakes and biscuits for the teas and served them, loaned the gazebo and garden furniture, sold plants and ice-creams.

Thank you, too, to all those who supported this event by visiting the gardens. Katherine and Andy Pemberton won the quiz prize draw, the title of the book being "The Secret Garden" and the author was Frances Hodgson Burnett. We raised a magnificent £583 for St. George's Church.

Rachel and Richard Taylor

COME AND JOIN US AT

KINGSTON'S FUN DAY

The Playing Field, Kingston

2.00 p.m. Saturday

2 August 2008



Children's Races
& Assault Course

Cream Teas ☼ Coconut Shy

Music ☼ Magician

Hog Roast ☼ Small Pet Show

Vintage Bus Rides

Greasy Pole ☼ Village Stocks

Tombola

Beer Tent & Food

A.R.B. GARDEN SERVICES

EXPERIENCED
TRADITIONAL GARDENER

**MAINTENANCE &
SENSITIVE RESTORATION**

CV AND
REFERENCES AVAILABLE

Alan Boyce
16 Cromwell Park Modbury
Ivybridge Devon PL21 0RS

**01548 830747
07989 415385**

Martin Ley PLUMBING REPAIRS AND NEW INSTALLATIONS

- * Bathrooms
- * Showers
- * Kitchens
- * General Repairs

Small jobs welcome

**Tel: Modbury 830609
Mobile: 07811 934551**

Accountancy Services

- Accounts
- Tax Returns
- Start-ups and Business Plans
- Bookkeeping, Payroll & VAT
- Fixed fees in advance
- Self-Assessment and CIS

Contact Alex Smith (ACA) on

01752 551 888

To arrange a free initial, no
obligation meeting



Acupuncture Can Help



Fiona Matthews SRN LicAc MBACC

Registered acupuncturist and a member of the British Acupuncture Council, providing acupuncture treatment since 1997, from her clinic at Sunnysdale Natural Health Centre in Ivybridge and also at the Plymouth Nuffield Hospital

Specialising in :-
stress relief, pain management, fertility, menopausal symptoms,
digestive disorders and facial enhancement acupuncture (non
surgical facelift)

Sunnysdale Natural Health Centre,
Cornwood Road, Ivybridge

For further information or to make an appointment please
contact Fiona Matthews

Telephone 01752 895401
Mobile 07767 665677

JOHN'S PRIVATE HIRE TAXI

Local & Long Distance

**All Air & Ferry Ports
24 hour service
Competitive Rates**

For a reliable service
Ring John Edwards
on 01548 830859
Mobile 07967 374502

CLEANER/FRESHER & NEWER LOOKING CARPETS & UPHOLSTERY AT AMAZING LOW PRICES



- ALL Stains Dirt & Odours Removed
- Affordable & Professional
- Local & Friendly Service
- LOW COMPETITIVE PRICES
- Residential, Business or Contract
- Fast Drying Times!
- In just 1-8 Hours



Call us now
for a FREE
no obligation
quote

CLEARVIEW-PLUS

Tel: 01548 550906

Mob: 07971 877772

www.clearview-plus.co.uk

NCCA
NATIONAL CARPET CLEANERS ASSOCIATION
CLEANING THE NATION'S CARPETS AND UPHOLSTERY

1st Class Carpet & Upholstery Cleaning
from your local NCCA Approved Member
email: info@clearview-plus.co.uk

AQUA HAIR DESIGN

PRESENTS

Modern Organic Products

As the marketplace for environmentally friendly products continues to grow MOP provides a natural alternative to consumers who are concerned about the impact that their beauty regime has on their bodies and the earth

Open 'til 8.00 pm Fridays
No 7 Modbury Court
01548 831260

The Lupridge Singers

The Lupridge Singers, singing in aid of the
Aveton Gifford Shop Association

**in St Andrew's Church
on Sunday 6th July at 3.00 pm**

will give voice to something of an Elizabethan
Pop Concert in a programme that Good
Queen Bess in her heyday might well have
relished had she attended the equivalent of a
Royal Command Performance.

Pastoral and amatory poems set to music for
unaccompanied voices, light hearted lyrics
with a good deal of Fa-la-la-ing and praises to
Oriana are all included in this selection of
madrigals balanced by the serenity of William
Byrd's Mass for Four Voices.

**Tickets £5.00 available from
Aveton Gifford Shop**

**Strawberries and cream and cream teas
available afterwards.**



EDEN TREE AND HEDGE CARE

- Tree surgery undertaken (NPTC Qualified)
- Lawn mowing Strimming
- Hedge cutting Turfing
- Garden clearances Pressure washing
- Chipping and chainsaw work
- **Fully insured**

**Logs and wood chip for sale all year round
For a free friendly quote call Adam Sloman on
01548 830611 or (07760 324419)**

Mrs C V Harrington MCSP; MMACP *Chartered Physiotherapist*

Registered with the Health Professional Council
And all Health Insurance Companies

DOMICILIARY SERVICE / HOME VISITS



Tel: 01548 810023
Mobile: 07776393927

Member of the Organisation of
Chartered Physiotherapists in Private Practice

Drop your trousers at Pickles!

**Quality Professional Dry Cleaning
and Laundry by**



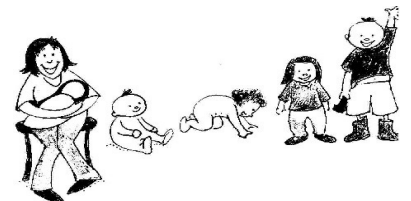
care for what you wear

**Available at Pickles of Modbury
Collection every Wednesday & Saturday**

MODBURY TIDDLERS

A Community Run Group for
Small People aged 0 - 5
(and for the people who wipe
their noses!)

**PLAYTIME FOR THEM!
COFFEE AND A CHAT
FOR US!**



Fridays 9.30 - 12 noon
£1.50 per child
@Modbury Memorial Hall
Enquiries ring Angie:
01548 831139

ANTIQUE FURNITURE REPAIRS & RESTORATION

Veneer Repairs, French Polishing
Hand stripping & Re-finishing
Wood-turning

CANEWORK & RUSH SEATING
Danish Cord & Seagrass



Guye Roberts
MASTHEAD
Parsonage Road
Newton Ferrers
Plymouth
DEVON PL8 1AS
01752 872805

Website : www.guye.co.uk
Email : guye@guye.co.uk



Kingsbridge Eye Care
1 The Promenade
The Quay,
Kingsbridge
Tel 01548 856 854

'Look no further...'

NHS/Private Eye Examinations
Everything from designer sunglasses
to low cost lens and frame packages
Contact Lens Specialists

Testing daily

**A personal and professional
service by Optometrists:**

Nigel Frost BSc (Hons) F.C. Optom,
Angela Hickman BSc (Hons) F.C. Optom
Kathryn Poole BSc (Hons) M. C. Optom

Nigel Frost
Optometrist
3 Chene Court
Modbury
Tel 01548 830 944



TALL ORDERS

**Landscaping & grounds
maintenance**

~lawn mowing ~hedge trimming
~brushcutting ~clearance....

HARD LANDSCAPING

~fencing ~decking ~patios
~natural stone walling

**CHAINSAW & TREE WORK
UNDERTAKEN**

Chipper & Mini-digger available
logs supplied

For a friendly free quote call James
Tall on 01548 831139 or mobile
07967258318 (fully insured)

drewpearce

Chartered Surveyors and Estate Agents

**7 THE CRESCENT PLYMOUTH
AND 14 CATHEDRAL CLOSE EXETER**

THINKING OF MOVING?

In the present climate it pays to plan ahead.

Our prestigious offices in
EXETER AND PLYMOUTH
are well positioned to offer a professional
PROPERTY SALES SERVICE
throughout SOUTH DEVON.

We specialise in providing personal selling for individual homes and can offer either full marketing or you could talk to us about our more confidential low key service.

Contact **PHILIP HUGHES FNAEA 01752 201748**
For an informal and without obligation discussion


beach divas

**64 Brownston
Street
Modbury
Devon PL21 0RQ
Tel: 01548 831666**

Ladies surf boutique
stocking a mix of surf
fashion and eco-friendly
ranges such as Roxy,
Billabong, Element,
Fenchurch, People Tree and
Gentle Fawn

Robert Houcke
**DOMESTIC
APPLIANCE
REPAIRS**

All makes of electrical
appliances repaired by an
experienced engineer
covering the South Hams.
Specialising in

BOSCH

NEFF

SIEMENS

01803 858411

07714 386745

MODBURY SILVER THREADS - JULY

Tuesday 1st

Meeting in Club 1.45 pm

Tuesday 15th

Meeting in Club 1.45 pm

Tuesday 29th

Trip to Topsham and Exmouth
10.00 am - £9.50

MODBURY CARING

Office Hours

Monday 2 - 5 pm

Thursday 9 - 12 noon

Telephone

01548 830118

Advertising Tariff for The Messenger

In order to support the publication of The Messenger, advertising relating to business, or of a commercial nature will be charged at the rates shown below.

Information for community use will continue to be published free of charge.

Single Insertion

1/9 th page	£10.00 per insertion
2/9 th page	£20.00 per insertion
1/3 rd page	£30.00 per insertion
1/2 page	£40.00 per insertion

Three Insertions

1/9 th page	£8.00 per insertion
2/9 th page	£16.00 per insertion
1/3 rd page	£24.00 per insertion
1/2 page	£32.00 per insertion

Six Insertions

1/9 th page	£6.00 per insertion
2/9 th page	£12.00 per insertion
1/3 rd page	£18.00 per insertion
1/2 page	£24.00 per insertion

Eleven Insertions

1/9 th page	£4.00 per insertion
2/9 th page	£8.00 per insertion
1/3 rd page	£12.00 per insertion
1/2 page	£16.00 per insertion

Artwork of good black and white copy to be supplied.
Payment must be made in advance.

Cheques should be made payable to Modbury Parish Council and sent to The Parish Office, 6, Modbury Court, Church St. Modbury PL21 0QR.

**For further information
please contact**

**David Hansford on
01548 830222**

MODBURY PARISH COUNCIL PARISH OFFICE

6 Modbury Court, Church Street
Modbury
Tel: 01548 830222
e-mail modburypc@tiscali.co.uk

Hours of Business-
Mondays 9.00am-1.00pm

Parish Surgery
10 – 11 am every Saturday

Planning Applications

Notices of planning applications lodged with SHDC are displayed on the Parish Noticeboard, outside the Post Office. Copies of plans relating to these applications can be inspected at the Parish Office during above office hours or when a Councillor is on duty.

Contacting Parish Councillors

Parish Councillors attend the Parish Office, on a rota basis, on Saturday mornings from 10.00 - 11.00am. Should you have any parish matter you would like to discuss come along to the Office at 6 Modbury Court. You can also call in to the Office on Mondays from 9.00am - 1.00pm and speak to the Clerk, David Hansford.

He can also be contacted by phone on 01548 830222 or e-mail at modburypc@tiscali.co.uk

At all other times you can leave a message either by phone or e-mail (see above) or alternatively you can write a letter or speak at the public forum held at the beginning of each monthly meeting of the Parish Council, held on the second Monday of each month at 7.00pm in the annexe of the Memorial Hall.

MESSENGER CLOSING DATE

*The closing date for the
September Messenger is
16th August 2008*

Please send all copy, by e-mail to prestons@onetel.com or deliver to the **Parish Office** (please note that all advertisements should be submitted **ONLY** via the Parish office – see below).

Payment for all advertisements must be made in advance. Cheques should be made payable to Modbury Parish Council and sent to The Parish Office, 6, Modbury Court, Church Street. Modbury PL21 0QR. For further information please contact David Hansford on 01548 830222.

The Modbury Messenger is published by The Modbury Parish Council and is printed by SHDC, Follaton House, Totnes.

The views expressed in the Modbury Messenger do not necessarily represent those of The Modbury Parish Council.

SOUTH HAMS DISTRICT COUNCILLORS

Our South Hams District Councillors are:

**Geoffrey Fielden –
830916, or
[councillorfielden@
southhams.gov.uk](mailto:councillorfielden@southhams.gov.uk)**

**Mark Lawrence –
830423, or
mark.lawrence@totalise.co.uk**

Our representative on DEVON COUNTY COUNCIL is William Mumford and he can be contacted on:
**01752 873002 or
william.mumford@devon.gov.uk**

KITCHENS BY

DeZine



Form and Function Working in Harmony

Quality kitchens, appliances and accessories designed and installed
around you and your home

All of our kitchens are individually designed to suit your lifestyle

t. 01548 830 819 m. 07766 821 548 f. 01548 831 519 info@kitchensbydezine.co.uk
Mackintosh House □ Palm Cross □ Modbury □ Devon □ PL21 0QZ www.kitchensbydezine.co.uk



**Fresh Seafood Light Bites
for Lunch**
Winter Opening Times -
Gone Fishing Mondays & Tuesdays!
**Open Wednesday to Sunday -
Breakfast, Lunch and Dinner**

Oyster Shack, Bigbury 01548 810876
Oyster Shack Salcombe 01752 843596
www.oystershack.co.uk

SOUTH HAMS MOBILE LIBRARY

The Mobile Library will be at the following
locations on **FRIDAY** mornings

Aylestone Pk (arr 0930 - dep 0955)
Cromwell Pk (arr 1000 - dep 1015)
The Green (arr 10.20 - dep 10.35)

Also on **MONDAY** afternoons
(excluding Bank Holidays) at
Poundwell
(arr 4.00 pm - dep 4.30 pm)

HAIRDRESSING

GOLDWELL
Hair Cosmetics

LAMAUR
Hair Care Products

ghd
a new religion for hair

BEAUTY THERAPY

Skincare St Tropez Tanning
Reflexology Acrylic Nails
Aromatherapy Waxing
Massage

Early morning or late night appointments on request.

London House,
Church Street, Modbury, S. Devon
Tel: (01548) 830152
e-mail: info@nicholashair.co.uk



MODBURY SHORT MAT BOWLS

*Are you fed up or bored
of an evening?*
Well why not come along
and try a game of Short Mat
bowls. It is great fun, and it
keeps you fit. At the
moment we are meeting
once a month on these
dates: May 14th, June 18th,
July 16th and Aug 13th

If you would like to come
along and have a go on
these dates you would be
made very welcome. We
have the equipment for you
to use and we meet in
Modbury Memorial Hall at
7pm.

**Any enquiries please ring
Pauline Ryder 830133.**