



MODBURY MESSENGER



To celebrate a 'Plastic Shopping Bag Free' Year, the Modbury traders invite you all to a **Massive Beach Clean up and Barbeque**. From mid-day onwards on Sunday April 27 a number of Modbury traders will be present on each of the following beaches:

- ❖ Wonwell Beach
(on the beach cove and also up the estuary)
- ❖ Westcombe Beach
- ❖ Ayrmer Cove
- ❖ Challaborough Beach
- ❖ Bigbury on Sea

Everyone is welcome to come and help. (Any children under the age of 17 must be escorted by responsible adults for insurance reasons).

We are also inviting the communities of Ringmore, Kingston, Bigbury, Challaborough and Bigbury-on-Sea.

Please wear old clothes and bring a pair of gloves, and a soft drink should you need. If we get enough people and if anyone is keen enough we may ask them to travel on to Mothecombe, Bantham or Thurlestone. Our aim is to try and clean as many beaches as possible in one day!

We are working alongside the Marine Conservation Society 'Adopt-A-Beach' campaign. Therefore on each beach we will carry out a small survey of litter that will then be fed back to the MCS UK database. We have arranged for 4x4s and trailers to collect the sacks of rubbish and drive all our findings to Bigbury-on-Sea car park where we can see the results of all our hard work. **The most prevalent piece of rubbish we find that day will be the next thing the Modbury traders will work to eliminate from their shops.**

BEACH BARBECUE

To round off the day, a large barbeque will be held on Bigbury Beach – run by Wilkinson's Butchers – from 3.00 pm onwards

Profits from the barbeque will go to the 'Plastic Bag Free' fund to help support future projects

This year we wanted to do something that included everyone from the start. As a community we can look after our local environment!

For more information please telephone:
The Brownston Gallery on 01548 831338
e-mail info@modburydevoninfo.co.uk
or Wilkinson's Butchers on 01548 830240.



AROUND THE CHURCHES



St Monica's Roman Catholic Church

St Austin's Priory
01752 892606
Sundays
9.00 am Mass
Everyone Welcome

Modbury Methodist Church

Superintendent Minister

Rev John Beadle
(Tel 01548 852073)

Ministers

Rev Gordon Davis
(Tel 01803 862350)

Rev Margaret Johnson
(Tel 01548 531455)

Sunday Services

10.30 am in
St Monica's Church

This is a small friendly group
Do come and join us

April Services

6th – Rev Gordon Davis
(Holy Communion)

13th – Mrs J Rotas-Clements

20th – Mrs Sally Sargent

27th – Rev John Beadle
(Holy Communion)

Coming and going

Easter has
come and
gone....or has it?



You may have noticed that our Cre8 Easter Children's workshop takes place on Tues. 8th April. That's not because of the strange comings and goings with the Easter school holiday this year, but rather that the Church will keep celebrating Easter for the whole of this month. Christians believe that God visited this planet in his Son Jesus; coming as a baby and going after death into heaven. Jesus showed the way that each of us can choose to follow; and that is what we celebrate all of the time, as we consider where we are going.



There is some going and coming this month at Aveton Gifford Church Primary School, as we say thank you and farewell to Val Moody as she goes into retirement and say welcome to James Elford coming as the new head teacher. James will be coming to our Family service at St Andrew's Church on April 27th at 11am and has already agreed to open the Fete.



We welcome people to come and go on our 2nd Parish walk of the year. We will be leaving from St Andrew's Church car park, Aveton Gifford at 2pm on Sat. 12th April for a walk of about an hour and a half. There will be refreshments in the church when we get back.



All this coming and going may sound rather exhausting and confusing, so make sure you take some time to stop, to rest and to listen. April 13th is "Vocation" Sunday, where our focus is on God's calling. Sometimes people think that "vocation" only applies to Vicars, missionaries,

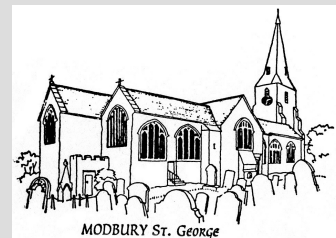
teachers and doctors; but the story of faith, down through the centuries, echoes with the voice of God calling all sorts of different people in all sorts of different ways to come to Him and to go with Him.

*"May the road rise up to meet you,
may the wind be ever at your back.*

*May the sun shine warm upon your face
and the rain fall softly on your fields.*

*And until we meet again, May
God hold you in the hollow of his hand."*

Neil Barker



St George's Parish Church, Modbury

*Give love - Receive strength
Jesus is for everyone*

SERVICES AND EVENTS IN APRIL

Sunday 6th

10.30 am – Family Communion

Tuesday 8th

2.00 – 4.00 pm – Cre8 Easter
Children's Workshop
6.30 pm – Old Testament course

Saturday 12th

Parish Walk at Aveton Gifford

Sunday 13th

10.30 am – Holy Communion
6.30 pm – Prayer and Praise

Sunday 20th

10.30 am – Holy Communion

Sunday 27th

8.00 am – Holy Communion
9.30 am – Family Service

WEEKDAYS

9.00 am Morning Prayer

THURSDAYS

9.30 am Holy Communion

**St George's & St Andrew's
are open every day for prayer**

PLANNING

Modbury Parish Council recommended and SHDC granted permission for:

Old Wheelwrights, Poundwell Street:

Self-contained accommodation.

SHDC Tree Committee:

- ❖ Approved work to tree at 4 Treveor Gardens
- ❖ Approved 20% reduction of tree crown at 6 Oakwood Drive
- ❖ Refused work to trees at 4 Ayleston Park

Modbury Parish Council made the following recommendations:

Undermeadows, Back Street: Addition of garden room and replacement of retaining wall, patio and landscaping – to be approved.

Champernowne Cottage, Palm Cross: Erection of dwelling in rear garden – to be refused.

Treveor, Treveor Gardens: Erection of conservatory, study and cloakroom – to be approved.

Brownston Hall, Brownston: Alteration to include roof, windows, solar panels and re-roofing – to be approved.

DOG FOULING

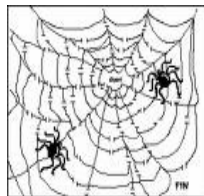
Grossly irresponsible dog owners continue to allow dog fouling to occur in the town. It is a particular problem around the Poundwell Car Park area and the footpath through Swanbridge Mill and the adjacent fields. You would not be happy if other people's dogs fouled your garden or doorstep so why do you think it is OK to leave your dog's mess on the footpath and fields? This really is a disgusting practice. **PLEASE STOP IT HAPPENING.**

REFUSE

When placing your refuse sacks out for collection please ensure that they are tightly tied to prevent spillage on to the pavements and

roads. We would ask that all residents of the town endeavour to keep the immediate area around their properties free of litter and rubbish.

PARISH COUNCIL WEBSITE



Is there a volunteer in Modbury who would like to be responsible for the maintenance of a Modbury Parish Council website?

Do you have good PC skills, ideally with some previous experience of working on websites. It will probably involve 4 – 6 hours work per month.

If you are interested please contact:

*David Hansford, Parish Clerk
6 Modbury Court, Church Street
Modbury PL21 0QR
Tel: 01548 830222*

e-mail modburypc@tiscali.co.uk

MARS UPDATE

The MARS Committee has taken the opportunity to review the project at the Recreation Field in light of the currently unsuccessful lottery bid.

We recognise that to raise the required level of funds in one go is a tall order and we have therefore agreed a phased approach to provide a community sports facility at the recreation ground. The first phase will concentrate on building good quality male and female changing facilities, together with a storage room(s), meeting room and modern kitchen. We are redesigning the current plans to reflect this and will publish these shortly.

In the meantime thank you to **everyone** who has so generously supported the project to date and we look forward to continued support going forward.

*Peter Watts
Chairman, MARS*

MODBURY OIL SYNDICATE - *Cheaper Domestic Oil*

There has been an excellent response to the idea of a **Modbury Bulk Oil Purchasing Syndicate** (details in last month's Messenger). Over 20 people have indicated an interest in joining and we hope to finalise a scheme in the next three to four weeks.

It is not too late to register your interest and have the opportunity of significant savings on your heating costs.

Either e-mail prestons@onetel.com with the following information:

- ❖ Name, Address & Postcode
- ❖ Telephone Number
- ❖ Size of Oil Tank
- ❖ Approx annual usage

or ring me on 01548 831324. If I am not in then leave me a contact number and I will call you back.

Peter Preston



MODBURY MEMORIAL HALL

THE ANNUAL GENERAL MEETING

WILL BE HELD IN THE
MEETING/SUPPER ROOM
OF THE
MEMORIAL HALL
ON
MONDAY 21ST APRIL 2008
@ 7.30 PM

A WARM WELCOME IS
EXTENDED TO ALL
PARISHIONERS
PLEASE COME ALONG AND
SUPPORT
YOUR COMMUNITY HALL



Come to the White Hart to experience some exquisite food, freshly prepared, locally sourced and reasonably priced.

Up-and-Coming Events April 2008

Beer & Burger Week- 5th-12th April

This week we will be serving a great selection of gourmet burgers, along with the beer of your choice for just £7.50.

Murder Mystery Evening-18th April With The Candlelight Theatre Company

Join us for an evening full of unusual goings on! Along with the task of solving crimes you will be served a fantastic 4-course meal to help keep your mind in focus.

Only £25.00 per person.

St Georges Day- 23rd April

We will be supporting St George's Day by serving some classic British dishes for everyone to enjoy!

Bollywood Night -26th April 7pm In Aid of Modbury Pre-School

Support your local community and join us at The White Hart for an evening full of Indian Culture.

£10 per ticket, per person.

Please contact us for more information about forthcoming events.

Church Street, Modbury, Ivybridge, PL21 0QW
T: 01548 831561

E: info@whitehart-inn.co.uk
W: www.whitehart-inn.co.uk

MODBURY CHAMBER OF COMMERCE

The Chamber of Commerce collection boxes for the Christmas Lights, which were in the local shops and pubs, raised a total of £234.99

Thank you to everybody who donated - every penny helps towards funding future Christmas Lights

Kay Freeman (Secretary)

THE GREEN CORNER

A bit of a mixed bag this month



So we've had a slightly green tinged Budget encouraging people to buy environmentally friendly cars and a financial discouragement to buy a gas-guzzler. With fuel prices also at an all-time high, hopefully the message about carbon emissions is getting through, although in a rural community we have to rely on our cars for transport most of the time. Devon County Council have worked in partnership with Plymouth City Council and Torbay Council to set up www.carsharedevon.com, but there's nothing to stop individuals getting together to share their car journeys - in fact several Modbury residents already do so. Perhaps we could set up an easily accessible system so that offers or requests for transport can be centralised.

Also in the Budget, the plastic bag revolution continues its snowball effect throughout the country just as Rebecca Hosking hoped it would.

You may have noticed in the booklet with your Council Tax bill a report that Devon now recycles 50% of its rubbish. In fact South Hams does even better and at 57% puts it fifth in the whole country. Apparently just another 2% and we could be top! Computer equipment becomes obsolete very quickly these days and the recycling facilities for this kind of waste at Tor Quarry and Ivybridge are financed by the electrical industry. So please take all old electrical rubbish there, and avoid putting it into your bins. There are still a few black bins to be seen overflowing with rubbish that should be in the recycle bags, but we can be proud of Modbury's green credentials.

A note for your diary! April 21 - 27 is Real Nappy Week, organised by The Women's Environmental Network. Kay Wagland of WEN said: "Parents can help to counter climate change and protect their babies' future with easy to use, modern, self-fastening real nappies. The most climate friendly option is washing nappies at home in the recommended way. It could save them money too." Should you want to celebrate the event, (and I know I will) there are lots of ideas on www.wen.org.uk

Jeff Booth

SCHOOL REPORT

Easter has come and gone and hopefully spring is just around the corner. In March the rain and gales lashed the area with the school surviving the high winds and the deluge with little more than a waterlogged football pitch and break time having to move indoors!

Talking of **football** the after school football club remains very popular for both boys and girls. With Modbury Rovers looking to form a junior section, the school could be a good source of talent for future teams. Jim Ogle who kindly trains our budding footballers is also the trainer for Modbury Juniors and invites any interested children over the age of 7 to come to the Recreation field on a Saturday morning between 10.00am and 11.45 am. Thanks Jim for your enthusiasm and support of our young sports people.

During the third week of March, Modbury School took a team to play at Sparkwell School. The result of this will be reported in next month's Messenger.

THE NEXT WIMBLEDON CHAMPION?

Modbury Tennis Club have arranged for a tennis-coaching programme, delivered by Level 4 qualified instructors to be made available to children from our school. These will be held after school on Tuesdays at the Modbury Tennis Courts. The cost to the students is as little as £2.00 per hour for members and £3.00 for non-members. These are discounted prices, which are kindly being subsidised by Modbury Tennis Club. This could be a great opportunity to introduce your children to tennis or to develop the skills they have learned to date. For full details please phone either Sue Birch 01548 831187 or Naomi Ainsley 01548 830794.

BUDDING SCIENTISTS

Year 5-6 children recently visited Ivybridge Community College as part of National Science and Engineering Week. Not to be left

out years 3 - 4 applied their scientific brains by turning into Willy Wonka, learning to re-engineer chocolate! (I can make it disappear too!) Not only but also, years 1 & 2 were being inventive, experimenting with ice and steam.

DRESSED TO THRILL

World Book Day took place in early March. Children of the school were further encouraged in their love of reading and as part of this celebration the children came to school dressed as their favourite character from the world of books. It really was an incredible sight seeing the 'cast of Harry Potter' walking to school alongside pirates and Vikings!

BOOGIE NIGHTS

Modbury PTA are providing the whole community with the opportunity to dress up on April 5th! They have organised a 70/80's Disco at The White Hart. The invitation is to come in fancy dress, which will qualify you for a free drink, or to come as you are and just enjoy what should be a fun evening. For tickets contact a member of the PTA or call Emma on 01548 830162.

PAVEMENTS OF GOLD

Well not gold exactly but DOG POO! How many times does this subject get a mention in the Messenger? I have mentioned on occasions the odd incidents of fouling in the school field but around the town at times the state of our pavements is disgraceful. Is it school business? Yes it is!

OUR CHILDREN WALK OUR STREETS going to and from School, OUR PARENTS WALK OUR STREETS going to and from school and they all walk the gauntlet of dog faeces! The irresponsible dog owners who KNOWINGLY fail to clean up after their dogs are potentially spreading disease and causing distress and disgust to the unfortunate people who step in this

dreadful mess. As a dog lover I defend the dogs but am saddened by the actions of some of their owners. I know it's only a minority but let's please tell the minority to literally get a grip of this and clean up their act. We are able to save the world from 'plastic bags' so how about saving our world from the curse of dog poo.

Sorry to end up having a moan but some things just have to be said.

Chris

OPEN GARDENS AND QUIZ TRAIL

Book the date
Sunday afternoon 1st June

A fun-filled afternoon for everyone exploring some Modbury gardens

In aid of St George's Church
Further details to follow

Paul and Elaine

WOULD LIKE TO SAY A BIG, HEART-FELT THANK YOU

For all the wonderful cards and gifts received following the birth of their beautiful daughter Jasmine on January 27th

X X X X X X



MODBURY SILVER THREADS - APRIL

Tuesday 8th

Meeting at The Club - 1.45 pm

Tuesday 22nd

Meeting at The Club - 1.45 pm



THE NATIONAL TRUST

THE NATIONAL TRUST SOUTH HAMS CENTRE

The summer programme was very full with coach trips to Cornwall, Dorset, Somerset and Devon. There were two organised local walks, a delightful evening boat trip from Salcombe to Kingsbridge and back, a most enjoyable luncheon at the Dartmouth Golf and Country Club and of course, our Grand Summer Fair in Kingsbridge, which was very successful.

Our winter programme was again full and very varied. We had some fascinating talks taking us as far afield as New England, then Worcester, back to Devon to Exeter and the South Hams. There was an Autumn walk from Bolberry Downs, more great coach trips, not just in our own county; one going as far as Bristol to see Brunel's fantastic ship, the SS Great Britain, and one to Exeter Cathedral for a wonderful Christmas concert given by the pupils of Exeter School. It is hoped that we can repeat this next winter. Our winter was equally good – a real fun evening with Skittles and Skoff at The Jolly Sailor at East Ogwell, a very happy and well attended coffee morning at the Thurlestone Hotel and a most enjoyable luncheon at the Cottage Hotel at Hope Cove. These social events are also a great opportunity to meet our new members.

Our new summer programme is now set up and is very full with coach trips, again to all four counties, some more delightful guided walks, and of course our Summer Fair in Kingsbridge. If anyone needs further information either about membership or the summer programme, Mrs S Barnes, Membership Secretary, 852751, or Mrs J Johnstone, Programme Secretary, 842540, will be pleased to help.

Modbury

Tourist Information Centre

5 Modbury Court, Modbury, Devon PL21 0QR
Tel: 01548 830159

Spring Opening Times

Monday to Saturday 10 m – 1pm

With the Easter School break upon us, come and see the exciting array of things to do with your family and friends this Spring.

Visit the beautiful **National Trust Properties and Gardens**. Look out for the nature trails that many have to offer. Spring has definitely sprung and the properties and gardens look truly amazing!

Paignton Zoo and Living Coasts have made, and are making exciting changes to both venues. Paignton Zoo is currently creating a huge Crocodile Swamp, due to open at the end of March. The highlight at Living Coasts will be Britain's first major exhibit based on a Mangrove Swamp habitat, due to open in July.

Woodlands have been busy installing their amazing new ride, the Sea Dragon Swing Ship, the biggest swing ship ride in the South West!

For these and more exciting ideas, call in for details and pick up your **discount vouchers** for Paignton Zoo, Living Coasts and Woodland Adventure Park. *Sue Birch*

TEA@THREE

AT KITLEY HOUSE HOTEL

IN AID OF ST LUKE'S HOSPICE

on

BANK HOLIDAY MONDAY

5TH MAY

1 – 5 PM

Cream Teas

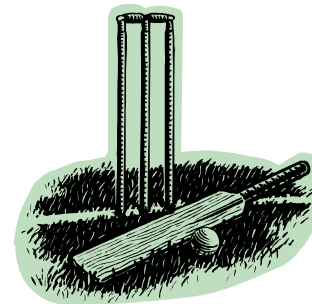
Stalls

Live Music

Further information - and tickets:

01752 492626

ERMINGTON CRICKET CLUB



Do you want to play cricket? Ermington play friendly matches on Sundays and Wednesdays throughout the season.

If interested call Mike Tilleff (830597) or Jon Morley (01752 892578) or come along to any of our pre season net sessions at Ridgeway School, Plympton on April 2nd, 9th, 16th & 23rd April – 7.00pm – 8.00pm

THE LUPRIDGE SINGERS

The Lupridge Singers will perform

Rossini's Messe Solennelle

at Ermington Church

on Sunday 20th April at 7.30pm

This is the last work he wrote
and he said of it

"You will know I was born to write Comic
Opera - it contains scant learning
but all my heart"

**Tickets £8.00 at the door or £7.00 in
advance from Pickles Hardware.**



MODBURY LOCAL HISTORY SOCIETY

The Totnes Image Bank contains thousands of photographs, many of which have been transferred on to slides. We were privileged to have the chance to see many of these at our February meeting. Moira Mellor from the Image Bank gave a detailed description of each slide, most of them concerned two families from the Torbay area who lived there during the 1800s, and one family purchased a farm on Dartmoor in the Manaton district.

Many of the images were of farming scenes in those days and of the characters who were employed. One of the families occupied Marley House, near Rattery, which later became Syon Abbey, and has now been converted to private apartments. Many other scenes were depicted; too many to mention all of them, but the photograph of Torquay centre before it was built up was particularly fascinating.

Mrs Mellor was warmly thanked by our Chairman, Mary Timmis, and a well deserved round of applause followed.

Our final meeting of the current series took place on Wednesday 12 March when we welcomed back Len Copley. He gave the well attended meeting a most interesting illustrated talk about the north Cornwall coast. That part of our neighbouring county is well worth visiting because it is so different to Devon, and Len told us about the many superstitions and customs which abound there.

We were lucky to book Len again; he is always in great demand. Derek Smith warmly congratulated him and said that he has heard many of Len's talks, which always fascinate him because of their quality and content, especially the quality of the illustrations.

The description of the pilchard industry and the method of curing was a revelation – not a single item was wasted! Hopefully we shall invite Len back next year to tell us some more about Cornwall.

Soon we shall put together another programme of talks which will begin on 12 September. Miss Terry Pearson has already agreed to come on that date to tell us all about the origin of the ancient symbol 'The White Hart'. But before then look out for news of our summer outing, yet to be arranged.

We are grateful to the management of the White Hart for the use of the Assembly Room - an ideal venue which is much appreciated, not only by ourselves, but also by our visiting speakers.

Ringmore Historical Society have informed us that an addition has been made to their programme – an illustrated talk will be given on Wednesday 16 April by Dr Eileen Wilkes from Bournemouth University, on the excavation of the Romano-British site at Folly Farm, Bigbury. Dr Wilkes is an excellent speaker and presents a very informative talk, looking at why a settlement might have been established here and, from the evidence, an insight into what life might have been like in the South Hams 2000 years ago.

Ringmore Historical Society meet in the WI Hall at 7.30 pm. Non-members £2. Contact Di Collinson on 810286.

David Mitchell



The Royal British Legion Modbury Branch

The next General Meeting will take place on Monday 7 April at the Modbury Club, commencing at 7.30 pm. New members welcome. Details available from our Chairman – Bill Sloman. Tel. 830425.

FIREFIGHTERS IN SUPPORT OF SPRING CLEAN

As spring is in the air it is a natural instinct for us to tidy, clean and freshen up our homes. Fire-fighters from Devon & Somerset Fire & Rescue Service have got their dusters at the ready!

Chief Fire Officer of Devon & Somerset Fire & Rescue Service, Paul Young said: "Many fires, which occur in homes, industry or businesses, are because of poor house keeping. Litter and waste can cause serious fires. Apart from the damage to property and the environment, those fires could cost

lives. Some simple steps can prevent risk. Spring is a time for a fresh look".

By following this advice your safety can be improved and the risk of fire reduced.

- ❖ Never empty smoking materials into bins in the house. Empty them into a separate metal container with a lid and preferably place outside.
- ❖ In the house make sure your escape routes through external doors are not blocked.
- ❖ Close all doors before going to bed at night.
- ❖ Never burn rubbish on an open fire in the home and always have a fireguard in place.

Try and keep combustible rubbish away from buildings, this is especially true for businesses with large amounts of waste and rubbish. If it catches fire or is set alight it can spread to the building.

In closing the CFO said: "We all have a part to play in helping to create a cleaner and safer environment. Our experience as fire-fighters tells us that all too often fires could have been prevented and we want to stop them starting in the first place. We ask you to join us in taking a fresh look at the way you treat and dispose of litter and help us to make our community a safer place."

Janet Booth, Devon & Somerset Fire & Rescue Service

MODBURY PRE-SCHOOL

A **HUGE** thank you to all who helped make the Modbury Pre-School Bring & Buy such a success.

**To everyone who brought & bought
To everyone who baked for the
cake stall; and everyone
who manned the stalls!!**

Last, but by no means least we owe a Big Thank You to Howie, Manger of The White Hart, Modbury who let us store the goods, let the room for free and made tea and coffee for all who wanted it. Thanks Howie.

**Modbury Pre-School made
over £360.**

Georgie Byrom

MODBURY FAIR WEEK PROGRAMME OF EVENTS - 2008

Fri. 2 May

- 6.00 pm Glove Ceremony and Crowning of the May Queen – Broad Street
6.30 pm Entertainment in the upper car park by Elfik the Jester

Sat. 3 May

- 10.30 am The Knights of Know-How on their Hobby Horses
An exhibition of Craft & Hobbies by local people – St George's Church
2.00 pm Grand Opening of the Millennium Garden
3.00 pm Teddy Bears' Picnic – Millennium Garden
8.30 pm Heroes and Villains – Entertainment with Disco and Bar

Sun. 4 May

- 8.30 am Modbury Fair Walks – Memorial Hall
10.30 am The Knights of Know-How on their Hobby Horses – St George's
6.30 pm Interdenominational Songs of Praise – St George's
8.00 pm Euchre – Donald Hill Memorial Trophy – The Modbury Inn

Mon. 5 May

- 10.30 am The Knights of Know-How on their Hobby Horses – St George's
10.30 am Treasure Hunt – Outside Chene Court
12 noon BBQ – Crepes – The Old Byre Brownston Street
12.30 pm Modbury Mile Registration – The Old Byre
2.30 pm Modbury Mile Race – Brook House
9.15 pm Quiz – The Modbury Inn

Tues. 6 May

- 10.30 am The Knights of Know-How on their Hobby Horses – St George's
6.30 pm Pet Show – Memorial Hall

Wed. 7 May

- 2.00 pm Tea Dance – Memorial Hall
7.30 pm Bingo – Memorial Hall

Thurs. 8 May

- 6.30 pm Beetle Drive – School Hall
8.00 pm Euchre Drive – Modbury Club

Fri. 9 May

- 2.00 pm Amanda's Pop Party – The White Hart
8.00 pm Gospel Singing – The White Hart

Sat. 10 May

- 9.30 am Street Market
11.00 am Judging of Shop Windows
5.00 pm Carnival Procession
8.30 pm Dance Live Music with Crazy Penguins

BASKET MAKERS SOUTH WEST

We hope to have a stall at the market to demonstrate the art of Traditional Willow Basket Making. If there is sufficient local interest, we would like to organise a course in Modbury later in the summer to enable people to make their own Willow Shopping Basket.

DONKEY DAYZE

There will be donkey rides for the children in the field by the Car Park. These donkeys are very friendly and ideal for the children

MODBURY FAIR 2008

MODBURY FAIR DESPERATELY NEEDS YOU



**WYATT EARP NEEDS MARSHALLS !!!
ROBIN HOOD NEEDS HELPERS !!!
DON'T BE A VILLAIN – BE A HERO
AND HELP THE FAIR**

Without these people

Modbury Fair will not go ahead

People are required for the following:
Marshalling, putting up market stalls,
programme delivering, assisting with
organising events etc.

**If you are interested in helping please
ring Pauline Ryder on 01548 830133**

MODBURY CARNIVAL

Entering Modbury Carnival is lots of fun

This year there is a new class for Best Overall Motorized Float. The winner will receive a cup and £50 prize money.

So why not get together with friends, family or neighbours and have some fun? A float can be as small or as large as you like, even an open-top car or the back of a pick up truck.

**If you need help getting vehicles telephone
01548 830133**



R.N.L.I.

Another year comes around and the annual Street Collection (Flag Day) will take place on Saturday 26 April.

As before, we need some more volunteers standing for one hour each outside the 'Brownston Gallery' and the 'White Hart'.

I welcome your support.

*John Robinson
Hon. Sec. 831143*



P3 MODBURY FAIR WALKS SUNDAY 4th May 2008

This year we are presenting **FIVE NEW WALKS**, three of which start outside the Parish. Do join with your friends and have a day out in our lovely South Hams countryside. If you have not ventured out before, now is the time to go and explore!

Signing on from 8.30 am in the Memorial Hall. Donation £1 per person.



Time your walk to finish with a cream tea 2.30 – 4-00pm kindly provided by the Modbury Society. There will be a slide show at various times through the day - "MAKING MODBURY"

Non walkers are very welcome in the Hall.

Routes and maps can be made available before the day for early starters.

Circular walks:

- | | |
|---|-------------------------------------|
| 1. Modbury/Battlefields/Trehele/Babland | 2-3½ miles (1-2 hrs) <i>EASY</i> |
| 2. Modbury/Orcheton/Butland | 6 miles (3 hrs) <i>MODERATE</i> |
| Walk back to Modbury from: | |
| 3. Aveton Gifford via Lixton | 6½ miles (3½ hrs) <i>MODERATE</i> |
| 4. Aveton Gifford via Bigbury and Kingston | 13 miles (7 hrs) <i>HARD</i> |
| 5. Bantham via Aveton
Gifford/Bigbury/Kingston | 18 miles (7½ hrs) <i>VERY HARD!</i> |

PLEASE NOTE:

You need to arrange your own transport for walks 3, 4 & 5. There are two buses from Modbury to Aveton Gifford (10.18am & 12.48pm) or arrange car sharing with your friends).

If you would like to discuss anything please feel free to call Mike or Brian: 01548 830550/830007

Modbury Millennium Meadow



As the original owners of the land, the Rogers family have continued to take an interest and been very supportive of the Modbury Millennium Meadow project. They have recently kindly agreed to a permissive path across land adjacent to the Meadow to link with Public Footpath 2, forming a circular walk and an additional

access point. With the agreement of the Rogers family the MMM Committee decided that the gate opening onto this path should be named after Mary-Rose, and Mary-Rose finally opened the gate and path on 16th February to coincide with her birthday.

NEW ACCESS BRIDGE

The construction team from SHDC arrived on site as promised on 3rd March and at the time of writing construction of the bridge and path are well under way. We hope that when you read this the work will be complete and the bridge in use, giving level access to the meadow from the town centre.

OPENING OF THE MEADOW

There are plans for an opening ceremony in Fair Week – at 2.00 pm on Saturday 3rd May. The event will be conducted by Gordon Waterhouse, who will follow the official opening with a 'Nature Ramble' through the Meadow in his own inimitable style. Do come along and take part in another milestone for Modbury.



ROSEMARY'S FLORIST



After 24 very happy years in Modbury I regret to advise all my customers that I shall be retiring this Easter.

I would like to thank everyone for their support and custom over the years.

The good news is that Lisa Chadwick will be taking over and Bella's Florist will be opening on 31st March.

Rosemary

Modbury Rovers Junior Football Club

If your son/daughter is a budding Ronaldo or just has bags of energy and likes to kick a ball around with their mates, our Saturday Morning training sessions 10.00 - 11.45 at the Recreation Ground, Chatwell Lane could be just what s/he needs. Annual membership is only £1 per family with a weekly £1 subscription for each player. We are aiming to be the friendliest junior football club in Devon. Just turn up and join in with the fun!



Last summer Peter Watts started up football sessions on Saturday mornings at the Recreation Ground for local children. Numbers were initially thin on the ground but this was countered by much enthusiasm and dedication. Jim Ogly (helps with after school football club) subsequently kindly volunteered his time & skills which are considerable, whilst Colin Low went about organising the administrative side. We are now established with a 10 person committee of parents and other volunteers interested in developing junior football in Modbury. Two of the dads Richard Teague & Mike Andrews are to attend an FA coaching course (the course fees are being paid for by MARS).

Our age range is currently 6 to 16, boys & girls. We are intending to join a local league but the teams we are able to enter are dependant upon the numbers available in each age group. Currently we are looking at a team of under 11s to start regular fixtures from next season. We are very keen to welcome new children and encourage family participation ie; bacon butties on the touchlines!

For any further information contact Colin Low on 830089 or colinalow@hotmail.com.

On a personal note I would like to say a big THANKYOU to Peter, Jim & Colin in providing the motivation in getting this project up and running and in giving freely of their time & skills.

Report from Eileen Berry (Minutes Secretary & Mum to 3 active boys)

Advance notice of Modbury's very own CAR BOOT SALE Spring Bank Holiday Monday (26th May)

It will provide you with the opportunity of getting rid of all those unwanted items you have been meaning to for years, without having to get up at a ridiculous hour.

Modbury Rovers Junior FC is organising a **Football Festival & Family Fun day** including the **Car Boot Sale, 6 aside competitions, BBQ, side shows & stalls** from 10.30 - 16.30 at the Recreation Ground.

Book in advance to get the best price and ensure a pitch - cars only £6 and vans £8 (£8 & £10 on the day if there is any space left). Contact Beverley Andrews on 830826 or email madscot7777@tiscali.co.uk for an application form.

Any local organisation/charity that is interested in putting on a stall or sideshow for £5 or 5% of profits

(whichever is the greater) should contact Colin Low on 830089 or colinalow@hotmail.com.

So put this date in your diary now - Monday 26th May 10.30 -16.30. Further details of this event will appear in next month's Messenger.

Colin Low, Chairman

Modbury Rovers Football Club (Seniors)

As our season comes to a close I am pleased to report that Modbury Rovers are 2nd in Division 3 and with four games to play we need only 1 point to gain promotion. If we can win our remaining games we could actually finish up as Champions of Division 3.

*Jim Petford, Secretary
Modbury Rovers*



PLASTIC MILK BOTTLE TOPS

Is anyone in Modbury collecting the plastic tops from milk bottles for charity? This is another way of reducing waste and recycling materials for a good cause. The person I have been saving them for has just given up collecting. If someone out there can make use of them please ring me on 01548 830021 or put a message in the Messenger to let people know.

Rachel Taylor

Modbury School P.T.A.

Presents

The Incompetent Brothers 70s/80s Disco

At the White Hart
On the 5th April
At 8pm - Midnight

Come in fancy dress and
Receive your first drink free

Tickets £5.00

Contact Emma

830162





Form and Function
Working in Harmony

Quality kitchens, appliances and accessories designed and installed
around you and your home

All of our kitchens are individually designed to suit your lifestyle

t. 01548 830 819 m. 07766 821 548 f. 01548 831 519 info@kitchensbydezine.co.uk
Mackintosh House □ Palm Cross □ Modbury □ Devon □ PL21 0QZ www.kitchensbydezine.co.uk



EDEN TREE AND HEDGE CARE

- Tree surgery undertaken (NPTC Qualified)
- Lawn mowing Strimming
- Hedge cutting Turfing
- Garden clearances Pressure washing
- Chipping and chainsaw work
- Fully insured

Logs and wood chip for sale all year round
For a free friendly quote call Adam Sloman on
01548 830611 or (07760 324419)

Mrs C V Harrington MCSP; MMACP
Chartered Physiotherapist

Registered with the Health Professional Council
And all Health Insurance Companies

DOMICILIARY SERVICE / HOME VISITS



Tel: 01548 810023
Mobile: 07776393927

Member of the Organisation of
Chartered Physiotherapists in Private Practice

HAIRDRESSING
GOLDWELL Hair Cosmetics

LAMAUR
Hair Care Products



BEAUTY THERAPY

- | | |
|--------------|-------------------|
| Skincare | St Tropez Tanning |
| Reflexology | Acrylic Nails |
| Aromatherapy | Waxing |
| Massage | |

Early morning or late night appointments on request.

London House,
Church Street, Modbury, S. Devon
Tel: (01548) 830152
e-mail: info@nicholashair.co.uk



**SHORT
MAT
BOWLS**

The Modbury
Short Mat Bowls
Club

Meet every

WEDNESDAY

7.00 pm at the
Memorial Hall

**New members
are welcome**

*Come along and
try it – it's fun!*

A.R.B. GARDEN SERVICES

EXPERIENCED
TRADITIONAL GARDENER

**MAINTENANCE &
SENSITIVE RESTORATION**

CV AND
REFERENCES AVAILABLE

Alan Boyce
16 Cromwell Park Modbury
Ivybridge Devon PL21 0RS

**01548 830747
07989 415385**

Martin Ley PLUMBING REPAIRS AND NEW INSTALLATIONS

- * Bathrooms
- * Showers
- * Kitchens
- * General Repairs

Small jobs welcome

**Tel: Modbury 830609
Mobile: 07811 934551**

Accountancy Services

- Accounts
- Tax Returns
- Start-ups and Business Plans
- Bookkeeping, Payroll & VAT
- Fixed fees in advance
- Self-Assessment and CIS

Contact Alex Smith (ACA) on

01752 551 888

To arrange a free initial, no
obligation meeting



Acupuncture Can Help



Fiona Matthews SRN LicAc MBACC

Registered acupuncturist and a member of the British Acupuncture Council, providing acupuncture treatment since 1997, from her clinic at Sunnysdale Natural Health Centre in Ivybridge and also at the Plymouth Nuffield Hospital

Specialising in :-
stress relief, pain management, fertility, menopausal symptoms,
digestive disorders and facial enhancement acupuncture (non
surgical facelift)

Sunnysdale Natural Health Centre,
Cornwood Road, Ivybridge

For further information or to make an appointment please
contact Fiona Matthews

Telephone 01752 895401
Mobile 07767 665677

Architects

We all want something different from our homes, that's what makes them ours. At Living Space we listen to what you want and use our experience to turn your vision into a reality.

For more information about our different approach, or to get a copy of our brochure, contact

01752 664888

or email

studio@livingspacearchitects.com



SPACE

CLEANER/FRESHER & NEWER LOOKING CARPETS & UPHOLSTERY AT AMAZING LOW PRICES



- ALL Stains Dirt & Odours Removed
- Affordable & Professional
- Local & Friendly Service
- LOW COMPETITIVE PRICES
- Residential, Business or Contract
- Fast Drying Times!
- In just 1-8 Hours



Call us now
for a FREE
no obligation
quote

CLEARVIEW-PLUS

Tel: 01548 550906

Mob: 07971 877772

www.clearview-plus.co.uk



1st Class Carpet & Upholstery Cleaning
from your local NCCA Approved Member
email: info@clearview-plus.co.uk

MODBURY BADMINTON CLUB

Memorial Hall
Tuesdays
7.30 – 10 pm

*New members always welcome
For further information please contact:*

Gill Jolly

Tel: 01548 831263

AQUA HAIR DESIGN

PRESENTS

Modern Organic Products

Each of our products are fortified with Organic and food derived ingredients. Our mission is simple and approachable - to maintain the highest standard in salon quality hair care, while respecting the environment

Late opening Fridays
8.00 pm

No 7 Modbury Court
01548 831260

JOHN'S PRIVATE HIRE TAXI

Local & Long Distance

**All Air & Ferry Ports
24 hour service
Competitive Rates**

For a reliable service
Ring John Edwards
on 01548 830859
Mobile 07967 374502



TALL ORDERS

Landscaping & grounds maintenance

*~lawn mowing ~hedge trimming
~brushcutting ~clearance.....*

HARD LANDSCAPING

*~fencing ~decking ~patios
~natural stone walling*

CHAINSAW & TREE WORK

UNDERTAKEN

*Chipper & Mini-digger available
logs supplied*

*For a friendly free quote call James
Tall on 01548 831139 or mobile
07967258318 (fully insured)*

Avonberry Garden Service:

Time to revitalise your garden or create something new?

We offer a full, professional gardening service, from help with design, to renovation, pruning, and general care.

Call for advice and quotations.

Year round care given to your garden



Telephone 01548 830536

Or 07977 534125

Email: Gandhservices@aol.com

MODBURY CARING

Office Hours

**Monday 2 – 5 pm
Thursday 9 – 12 noon**

**Telephone
01548 830118**

Drop your trousers at Pickles!

**Quality Professional Dry Cleaning
and Laundry by**



care for what you wear

**Available at Pickles of Modbury
Collection every Wednesday & Saturday**

★
beach diva

**64 Brownston
Street
Modbury**

**Devon PL21 0RQ
Tel: 01548 831666**

Ladies surf boutique
stocking a mix of surf
fashion and eco-friendly
ranges such as Roxy,
Billabong, Element,
Fenchurch, People Tree and
Gentle Fawn

**ANTIQUE FURNITURE
REPAIRS & RESTORATION**

Veneer Repairs, French Polishing
Hand stripping & Re-finishing
Wood-turning

CANEFWORK & RUSH SEATING
Danish Cord & Seagrass



Guye Roberts
MASTHEAD
Parsonage Road
Newton Ferrers
Plymouth
DEVON PL8 1AS
01752 872805

Website : www.guye.co.uk
Email : guye@guye.co.uk



Kingsbridge Eye Care
1 The Promenade
The Quay,
Kingsbridge
Tel 01548 856 854

'Look no further...'

NHS/Private Eye Examinations
Everything from designer sunglasses
to low cost lens and frame packages
Contact Lens Specialists

Testing daily

**A personal and professional
service by Optometrists:**

Nigel Frost BSc (Hons) F.C. Optom,
Angela Hickman BSc (Hons) F.C. Optom
Kathryn Poole BSc (Hons) M. C. Optom

Nigel Frost
Optometrist
3 Chene Court
Modbury
Tel 01548 830 944



**G H W Rosevear
& Co**

**Your Resident Accountant
& Chartered Secretary**

**Accountancy & Taxation
services**

Accounts for Sole Traders,
Partnerships and Private Limited
Companies by Share or Guarantee

Reporting Accountant and Audit
Services available

Self-Assessment Tax Returns for
Individuals & Partnerships
Including Capital Gains Tax

Corporation Tax Returns for
Companies

Construction Industry Scheme
(CIS)

Business Start-ups & Business
Plans

Bookkeeping, VAT and Payroll

**Hours 8 a.m. to 6 p.m.
Monday to Friday
Weekends by appointment**

Practice Address:

3 Modbury Court
32 Church Street, Modbury
Ivybridge, Devon, PL21 0QR

Telephone: 01548 831427

Fax: 01548 830977

Email address:

george@holbrookass.com

drewpearce 

Chartered Surveyors and Estate Agents

**7 THE CRESCENT PLYMOUTH
AND 14 CATHEDRAL CLOSE EXETER**

THINKING OF MOVING?

In the present climate it pays to plan ahead.

Our prestigious offices in
EXETER AND PLYMOUTH
are well positioned to offer a professional
PROPERTY SALES SERVICE
throughout **SOUTH DEVON.**

We specialise in providing personal selling for
individual homes and can offer either full
marketing or you could talk to us about our more
confidential low key service.

Contact **PHILIP HUGHES FNAEA 01752 201748**
For an informal and without obligation discussion



**Fresh Seafood Light Bites
for Lunch**
Winter Opening Times -
Gone Fishing Mondays & Tuesdays!
**Open Wednesday to Sunday -
Breakfast, Lunch and Dinner**

Oyster Shack, Bigbury 01548 810876
Oyster Shack Salcombe 01752 843596
www.oystershack.co.uk

Robert Houcke
**DOMESTIC
APPLIANCE
REPAIRS**

All makes of electrical
appliances repaired by an
experienced engineer
covering the South Hams.
Specialising in

BOSCH

NEFF

SIEMENS

01803 858411

07714 386745

Advertising Tariff for The Messenger

In order to support the publication of The Messenger, advertising relating to business, or of a commercial nature will be charged at the rates shown below.

Information for community use will continue to be published free of charge.

Single Insertion

1/9 th page	£10.00 per insertion
2/9 th page	£20.00 per insertion
1/3 rd page	£30.00 per insertion
1/2 page	£40.00 per insertion

Three Insertions

1/9 th page	£8.00 per insertion
2/9 th page	£16.00 per insertion
1/3 rd page	£24.00 per insertion
1/2 page	£32.00 per insertion

Six Insertions

1/9 th page	£6.00 per insertion
2/9 th page	£12.00 per insertion
1/3 rd page	£18.00 per insertion
1/2 page	£24.00 per insertion

Eleven Insertions

1/9 th page	£4.00 per insertion
2/9 th page	£8.00 per insertion
1/3 rd page	£12.00 per insertion
1/2 page	£16.00 per insertion

Artwork of good black and white copy to be supplied.
Payment must be made in advance.

Cheques should be made payable to Modbury Parish Council and sent to The Parish Office, 6, Modbury Court, Church St. Modbury PL21 0QR.

**For further information
please contact**

**David Hansford on
01548 830222**

MODBURY PARISH COUNCIL PARISH OFFICE

6 Modbury Court, Church Street
Modbury
Tel: 01548 830222
e-mail modburypc@tiscali.co.uk

Hours of Business-
Mondays 9.00am-1.00pm

Parish Surgery
10 – 11 am every Saturday

Planning Applications

Notices of planning applications lodged with SHDC are displayed on the Parish Noticeboard, outside the Post Office. Copies of plans relating to these applications can be inspected at the Parish Office during above office hours or when a Councillor is on duty.

Contacting Parish Councillors

Parish Councillors attend the Parish Office, on a rota basis, on Saturday mornings from 10.00 - 11.00am. Should you have any parish matter you would like to discuss come along to the Office at 6 Modbury Court. You can also call in to the Office on Mondays from 9.00am - 1.00pm and speak to the Clerk, David Hansford.

He can also be contacted by phone on 01548 830222 or e-mail at modburypc@tiscali.co.uk

At all other times you can leave a message either by phone or e-mail (see above) or alternatively you can write a letter or speak at the public forum held at the beginning of each monthly meeting of the Parish Council, held on the second Monday of each month at 7.00pm in the annexe of the Memorial Hall.

MESSENGER CLOSING DATE

*The closing date for the
May Messenger is
16th April 2008*

Please send all copy, by e-mail to prestons@onetel.com or deliver to the **Parish Office** (please note that all advertisements should be submitted **ONLY** via the Parish office – see below).

Payment for all advertisements must be made in advance. Cheques should be made payable to Modbury Parish Council and sent to The Parish Office, 6, Modbury Court, Church Street. Modbury PL21 0QR. For further information please contact David Hansford on 01548 830222.

The Modbury Messenger is published by The Modbury Parish Council and is printed by SHDC, Follaton House, Totnes.

The views expressed in the Modbury Messenger do not necessarily represent those of The Modbury Parish Council.

SOUTH HAMS DISTRICT COUNCILLORS

Our South Hams District Councillors are:

**Geoffrey Fielden –
830916, or
[councillorfielden@
southhams.gov.uk](mailto:councillorfielden@southhams.gov.uk)**

**Mark Lawrence –
830423, or
mark.lawrence@totalise.co.uk**

Our representative on DEVON COUNTY COUNCIL is William Mumford and he can be contacted on:
**01752 873002 or
william.mumford@devon.gov.uk**

MODBURY DIARY – APRIL 2008



Tuesday 1 st	Badminton Club	Memorial Hall	7.30 pm – 10.00 pm
Wednesday 2 nd	Short Mat Bowls	Memorial Hall	7.00 pm
Friday 4 th	Modbury Tiddlers Rock Shop	Memorial Hall School Hall	9.30 am – 12 noon 7.00 pm – 9.00 pm
Saturday 5 th	School PTA 70s/80s Disco	The White Hart	8.00 pm - Midnight
Tuesday 8 th	Cre8 Easter Workshop Badminton Club	St George's Church Memorial Hall	2.00 pm – 4.00 pm 7.30 pm – 10.00 pm
Wednesday 9 th	Short Mat Bowls	Memorial Hall	7.00 pm
Friday 11 th	Modbury Tiddlers Rock Shop	Memorial Hall School Hall	9.30 am – 12 noon 7.00 pm – 9.00 pm
Tuesday 15 th	Badminton Club	Memorial Hall	7.30 pm – 10.00 pm
Wednesday 16 th	Short Mat Bowls	Memorial Hall	7.00 pm
Friday 18 th	Modbury Tiddlers Rock Shop	Memorial Hall School Hall	9.30 am – 12 noon 7.00 pm – 9.00 pm
Sunday 20 th	The Lupridge Singers	Errington Church	7.30 pm
Tuesday 22 nd	Badminton Club	Memorial Hall	7.30 pm – 10.00 pm
Wednesday 23 rd	Short Mat Bowls	Memorial Hall	7.00 pm
Friday 25 th	Modbury Tiddlers Rock Shop	Memorial Hall School Hall	9.30 am – 12 noon 7.00 pm – 9.00 pm
Saturday 26 th	RNLI Flag Day	Modbury	All day
Sunday 27 th	Modbury Beach Clean & Barbecue	Local Beaches Bigbury Beach	12 noon 3.00 pm
Tuesday 29 th	Badminton Club	Memorial Hall	7.30 pm – 10.00 pm
Wednesday 30 th	Short Mat Bowls	Memorial Hall	7.00 pm

FIR TREE GARAGE

Used Car Sales

MOT. MOT. MOT

Now re-open under new Tester



FREE Delivery & Collection Service

FREE Courtesy Car (by appointment)

10% DISCOUNT on your MOT

Excellent Service & Repair Rates

LOOKING FOR A GOOD QUALITY USED VEHICLE?
CHECK OUT OUR WEBSITE OR CALL IN –
OUR STOCK CHANGES WEEKLY. WE HAVE BEEN SUPPLYING
LOCAL PEOPLE WITH OUR CARS FOR OVER 20 YEARS

MOTs & Service www.firtreegarage.co.uk

t: 01548 550063 m: 07918 032041

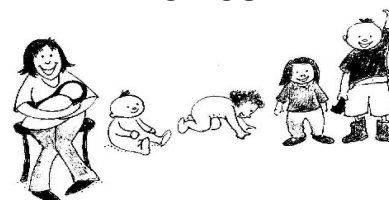
Located on A379 between Aveton Gifford & Modbury

MODBURY

TIDDLERS

A Community Run Group for
Small People aged 0 – 5
(and for the people who wipe
their noses!)

**PLAYTIME FOR THEM!
COFFEE AND A CHAT
FOR US!**



Fridays 9.30 – 12 noon

£1.50 per child

@Modbury Memorial Hall

Enquiries ring Georgie:

01548 831038