

MODBURY MESSENGER



Modbury Tennis Club celebrated the completion of the re-surfacing of their

all-weather tennis courts in July with an Open Afternoon and Strawberry Cream Tea. They've certainly had all weathers thrown at them this season but players are delighted with the new surface which is playing well in all conditions. A strategically placed gazebo kept the scones and cream dry and the odd shower couldn't dampen their spirits! This is a great facility for the community and hopefully we still have some fine weather to look forward to for everyone to enjoy some tennis.

Photo: Treasurer Gerry Kendrick thanks MARS Chairman and Parish Councillor Peter Watts for their support with the project.



MODBURY SCHOOL AND PRE-SCHOOL FUN RUN 2007

There's still time to clock up a few more training miles before this year's Fun Run in aid of Modbury School and Pre-School which takes place on September 30th.

The run will start and finish on the School Field, which will also be hosting a fun day for all the family with bar, BBQ, market stalls, a bouncy castle and plenty of games and amusements. The testing three-mile course will be the same as last year, through Sheephams and back through Weeke, in order to avoid the town centre. A run for younger children will take place at the same time on the School Field.

Runners can register on the day, the gates open at 11 am and the run will start at 12 noon. Anyone who would like to lend a hand on the day can contact Claire Hagger on 830957 or Ellen James on 831230.

MESSENGER MESSAGE

Welcome back to all readers. We hope you had a good summer break (despite the weather).

Please note that due to the restraints of space and cost it is sometimes necessary to précis articles or omit them from the Messenger altogether. Please therefore keep all articles as succinct as possible to minimise the risk of change. Many thanks.

AROUND THE CHURCHES



St Monica's Roman Catholic Church

St Austin's Priory
01752 892606
Sundays
9.00 am Mass
Everyone Welcome

Modbury Methodist Church

Superintendent Minister
Rev John Kendall
(Tel 01548 852073)
Assistant to Minister
Rev Margaret Johnson
(Tel 01548 531455)
10.30 am in St Monica's
Church

This is a small friendly group
Do come and join us

September Services

2nd – Mrs H Hibbard
9th – Mrs J Harvey
16th – Mrs C Tucker
23rd – Rev J Beadle
30th – Rev G Davis

Giving thanks and more....

Dear Friends

As we draw near to Harvest
Thanksgiving Festivals, we
remember all the hard work our

farmers do and the special
challenges they have had this
year. Aveton Gifford will
celebrate with a service at 6.30pm
on Friday 21st Sept in St.
Andrew's Church followed by a
Harvest Supper in the Memorial
Hall. Modbury will have a
Harvest Supper in the Memorial
Hall on Sat. 6th October at 6.30pm
with the Harvest Festival on
Sunday 7th October at 10.30am.



This month in
Modbury we
are
undertaking a
"Harvest of
Talents and Ministries", inviting
people to consider prayerfully
what they can give in practical
service of the Lord in the local
church. Leaflets are available in
church, which outline the
opportunities from leading
worship to photocopying,
bereavement follow-up to being a
mission link. I am asking people
to bring their offers of practical
help in the leaflet to the Harvest
Service on Sunday 7th October.
Jesus said: "The harvest is
plentiful, but the workers are few.
Ask the Lord of the harvest
therefore to send out workers into
his harvest field."

In Aveton Gifford we are thankful
for all that Sue Stanger has done
in her time as Church Warden.
There will be an Extraordinary
General Meeting of
Parishioners on 20th
Sept at 7.30pm to
elect a new Church
Warden.



Harvest Thanksgiving helps us to
remember that God calls us to
look after his creation. On Wed 3rd
October at 7.30pm in St George's
Church we will be showing the Al
Gore film "An inconvenient truth"
about global warming. Come and
join us as we think about our
responsibility.

Neil Barker

St George's Parish Church, Modbury SERVICES AND EVENTS IN SEPTEMBER

Sunday 2nd

10.30 am – Family Holy Communion

Wednesday 5th

7.30 pm – Modbury PCC

Saturday 8th

Devon Historic Churches Bike Ride

Sunday 9th

10.30 am – Holy Communion

6.30 pm – Praise and Prayer

Sunday 16th

10.30 am – Holy Communion

Sunday 23rd

8.00 am – Holy Communion

9.30 am – Family Service

6.30 pm – Taize

Wednesday 26th

7.30 pm Team Council

Also

WEEKDAYS

9.00 am Morning Prayer

THURSDAYS

9.30 am Holy Communion

MONDAYS

8.00 pm Housegroup
(13 Benedict Way)

TUESDAYS

7.30 pm Bellingring Practice
8.00 pm Housegroup
(3 Sun Terrace)

THURSDAYS

7.30 pm (1st & 3rd of the month)
St George's Singers
6.30 pm (3rd of month)

Julian Group

FRIDAYS

7.00 pm Rock Shop (School Hall)

Harvest at St George's

We will again be supporting 3 local
charities with our harvest gifts: the
Salvation Army (Plymouth), the
Shekinah Mission and Plymouth
Women's Refuge. Gifts of fresh
produce, tinned and packet foods,
or useful household products such
as bin liners, washing-up liquid etc
will be very welcome. Please bring
them (or flowers for decoration) to
the church on the morning of Sat. 6
October. If you cannot do that
please leave them during the week
at:

**Rosemary's Flower Shop or
7 Brownston Street.**

Thank you for your help.



Angela's Garden Corner

Your Garden in September

After all the rain we've had this summer, the autumn is going to involve a lot more trimming and tidying up than usual...

Lawns

Lawns have grown long and rank this year. If you have kept up with the mowing this will not be a problem, but if the grass has been allowed to get long, perhaps because of holidays, you will need to return to a Spring type of mowing with the blades set higher at first. Don't leave the clippings on the lawn because, with so much moisture in the ground, there will be a strong chance of fungal outbreaks.

Beds and Borders

Plant spring bulbs, such as daffodils and tulips, in natural groups following an oval or boat shaped design. This looks better than a formal shape like a square. Some people like to throw handfuls of bulbs on the ground and plant them where they land, but in my experience you always lose quite a few and they can be bruised too!

If you want to have Spring bedding, like wallflowers and polyanthus, these can be planted now. Remove summer bedding and fork over the ground, removing weeds as you go. Add some fertiliser before planting.

Cut back any herbaceous plants and seedheads and lightly fork over to leave the bed tidy.

Autumn flowering plants are very useful at this time of year, giving a last burst of colour before winter. If your garden looks a bit tired, why not add some nerines or schizostylis, hardy fuchsias or abelias to give late colour next year.

Think about the winter months in September and plant

something which will help the cold season seem shorter. Even when it's icy the Christmas Box, sarcococca, will flower, and even if you can't get outside to see it, you will smell its perfume on a still day. Daphne odora will also flower in the depths of winter, and for those with only a small garden, the Algerian Iris, iris unguicularis, will flower all through the cold months whenever there is a milder spell.

Vegetables and Fruit

Remove the old canes from fruit like raspberries and tayberries and tie the new canes into their framework.

Pick plums, pears and apples as soon as ripe. Do not tug apples off the tree. If they are ripe they will come away easily when cupped in the hand. Store perfect fruit carefully and use the less than perfect for juice or cooking.

Tidy up the vegetable garden and the greenhouse. Put down compost or straw on vegetable beds to protect the soil. When you have picked the last of a crop, remove the plants along with support sticks and debris. The courgettes should crop until next month. Brassicas can be protected from the cabbage white butterfly by covering them with fleece. Clean the greenhouse glass to maximise light levels in the coming months. Greenhouse hygiene is more important now too, so clear any debris and tidy up old leaves.

Pots and Patios

Summer bedding has not flowered as well as usual for a lot of people this summer, due to the rain, so it might be best to

scrap any old plants and replant with pansies or violas for the winter. However if your bedding is still healthy, cut it back, removing all faded flowers, give it a good feed, and leave it. If we get a fine warm autumn it will surprise you!

Six Great Non-Stop Bloomers to plant now

Osteospermum These flowers (there are several varieties) are daisies from South Africa which will flower virtually all year, sometimes having a break for part of the winter. In my garden they have flowered in every month including January.

Poppy *Papaver rupifragum* flore plenum, sometimes called Orange Feathers, is a perennial poppy which just keeps on flowering, on and off, throughout the year.

Erigeron mucronatus is the pink and white daisy that grows here in Devon in walls and banks. Rarely out of bloom.

Viola cornuta is a bedding viola but it is hardy and flowers non stop for



months. When you think it's finished it will start again.

Verbena bonariensis, from Buenos Aires, has tall stems with purple flowers on the top. Not only does it flower all summer but the flowers will dry in situ and stay attractive most of the winter.

Clematis tangutica will not only flower from May until October, but the seedheads last for most of the winter and look like silvery stars.

MODBURY MEMORIAL HALL

Revised Terms of Hire – Effective 1.9.07

TIMES OF HIRE

Monday to Saturday: 10.00 am – 11.30 pm

Sundays: 10.00 am – 10.30 pm

(both including organisers' clearing time)

All patrons of functions must vacate the Hall and its environs by 11 pm (10 pm on Sundays).

CHARGES

Main Hall or Meeting/Supper Room

Mornings and Afternoons: £19.00

Evenings: £20.00

Children's Parties, afternoons to 5.30pm: £19.00

Evening functions 6.00–11.00pm with Hall Licence: £60

Use of kitchen and equipment for any event: £7.

All charges are inclusive of heating and lighting.

DEPOSIT:

All evening function bookings require a £25 deposit – non-refundable in event of cancellations. Bookings only confirmed on receipt of deposit.

CANCELLATION CHARGE: Any user (including regular users who block book) will be charged a minimum of £10 for any cancellation with less than 14 clear days notice.

APPLICATION FORMS:

New application forms are available from Pickles Hardware, together with a copy of the new charges and conditions of hire.

Modbury Memorial Hall Trustees

EXTENSION OF FARE CAR SERVICE TO IVYBRIDGE STATION

From Monday 13 August 2007 Fare Car Service F7 from Bigbury, Ringmore, Modbury and Ugborough areas will additionally serve Ivybridge Station.

RUNNING TIMES

Into Ivybridge Station on Mondays to Saturdays:

- 0755 (connects with 0801 to Plymouth on Mondays to Fridays)
- 1120 (connects with 1125 to Exeter on Mondays to Fridays, 1125 to Newton Abbot on Saturdays)
- 1300 (connects with 1310 to Plymouth on Mondays to Fridays, 1309 to Plymouth on Saturdays).

From Ivybridge Station on Mondays to Saturdays:

- 1715 (connects with 1659 arrival from Plymouth on Mondays to Fridays)
- 1815 (connects with 1803 arrival from Plymouth on Mondays to Fridays, 1757 arrival from Plymouth on Saturdays, 1759 arrival from Newton Abbot on Mondays to Fridays, 1758 arrival from Newton Abbot on Saturdays)
- 2130 (connects with 2126 arrival from Plymouth on Mondays to Fridays)

There is no service on Sundays. Bookings must be made at least one day in advance by calling the provider, Bridge Cabs.

USED INJET CARTRIDGES TONERS & OLD MOBILES

Be green and contribute to the **MARS Project** at the same time.

We can send inkjet cartridges, toners and old mobiles for recycling and receive funds in return. Please take your old cartridges, toners and mobiles to the **Inkjet Collection Point** at:

**LUSCOMBE MAYE
BROAD STREET, MODBURY**

GEOFFREY SHEERS: 1914 – 2007

Geoffrey Sheers spent many years of his life as a Chest Physician and Radiologist carrying out research that would affect thousands of people in many countries. He worked on Tuberculosis in Cornwall but primarily on Industrial Disease caused by exposure to coal, China Clay and asbestos. I had the privilege of working with Geoffrey for over thirty years, during which time he contributed a great deal to our knowledge of Industrial Medicine and also gave of himself as a sympathetic, caring and supportive Medical Practitioner.

Ruth Robinson

Geoffrey and his wife Jean left Modbury where they had lived for some 20 years to live in Raglan in 1995. Jean died in 2000 and now sadly Geoffrey has gone. They both, in their individual and distinctive ways, made a huge contribution to life in Modbury; Jean with her brilliant town models and intricate patchworks of house frontages and Geoffrey as staunch supporter and Vice Chairman of the Modbury Society. His advice and fine judgement in planning matters that ranged from broad policy to particular detail were invaluable. The plethora of housing projection, employment land and transport statistics in weighty consultation documents were grist to the mill to him and he always came up with a sound response. He was not just office bound though; I recall sitting with him in an upstairs window above the chemist's shop in Broad Street sometime in the late 70s whilst we monitored traffic flow through Modbury as evidence against the day when we might need some juggernaut relief. The Modbury Society is grateful for all that he did for us.

Roger Gage

MODBURY FAIR UPDATE

All monies collected for Modbury Fair have now all been received.

Would all people who wish to make a claim please apply to Mrs P Ryder at 68 Champernowne, Modbury, PL21 0RE

Closing date Saturday 22nd September

There will be a meeting on September 25th in the Side Hall of the Memorial Hall at 7.30 pm.

SCHOOL REPORT

WHOOSH...

Summer holidays have come and gone! When I was at Primary school the summers just went on and on. Every day it seems was sunshine and I was out the door at the crack of dawn and only returned home for grub! A day out with mum and dad was an exception rather than the rule and meant a trip to boring relatives, travelling around the countryside squashed in the back of a turquoise Ford Anglia arguing with my brothers and sisters. Given the choice my mates and my old fixed wheel push bike and the open road won every time!

How times have changed, speed of time must be an age thing, but as a child my parents told us to go out and make our own fun, 'find something to do and make sure you are back for lunch.' Now it's the children saying "please entertain me....make my fun" and we say, "and make sure you stay in sight of me!" Are we teaching dependence or independence?

Who cares about holidays anyway, what we want is schooling, good schooling. What have we got, **GREAT SCHOOLING!**

The end of year Year 6 SAT results have illustrated the quality of teaching and student ability at Modbury School. Statistics illustrate the attainment of our pupils, grading them into levels agreed nationally. These highlight attainments: below the expected level, expected level and above expected level. In English overall 100% of the children attained expected level or above with 60% above expected level. In reading alone 72% of children were above the expected level. In maths 94% achieved expected level or above with 54% above expected level. In Science 100% of the children have achieved expected level or above, with 76% above expected level.

Further evidence of our excellent schooling can be found by viewing

the recent government CVA (Contextual Value Added) reports for 2006. This analysis looks at how much progress each child makes in their learning from their KS1 (Year 2) results to the end of KS2 (Year 6) SATs results. This is a measure not only of the grade attained at the end of Y6, but the achievements in progress throughout KS2. The report asks what value the school added. What difference was made? Did the children make expected, or above expected progress?

We are delighted to say that in the government analysis of the **2006** Y6 results, the children at Modbury Primary School made significantly above expected progress. This placed the school in the top 5% of schools nationally for the progress made in the 4 years in KS2.

These are excellent results and we applaud all the teaching staff and the pupils for their hard work. These results, along with the social skills taught within the school make us a school truly **Second to None!**

NEW APPOINTMENTS

We are delighted to let you know that at interviews held late last term, Mrs Caroline Strachan was appointed as a permanent teacher at the school and Mr Simon Hill as a temporary teacher to cover the secondment of the Deputy Headteacher, Denise Plant, until September 2008. We wish them well and welcome them as valued members of Modbury School.

POETRY

During the second half of the school year, Year 4 pupils entered a Young Writers poetry competition, by Forward Press. About 60% of the entries nationally are being published.

The children in Year 4 are thrilled as every child in the class has had one of their poems selected for publication. The book is to be published 31/10/07 and we will advise you when we have a copy available to view.

OUT WITH THE OLD YEAR IN WITH THE NEW

The Sports day, Swimming gala and Years 5 & 6 residential visit to River Dart Country Park concluded the scurry of activity that closed the 2007 academic year. Thank you to our Y5 and year Y6 children for conducting themselves so well on their residential trip to the River Dart Country Park in July. They came home with the expected heaps of laundry but importantly lots of tales of their adventures and tired but happy smiles. Thank you to Mrs Garnett and Mrs Dixon (did you really go on the zip-wire and up the climbing wall?) for accompanying them and also to those parents and teaching assistants who provided transport and support during the trip - the rewards are clear to see.

We are so fortunate that our children's attitude and courtesy without exception receive notice when we go on day or residential trips, which makes us even more proud of the children than we are already!

Mrs Bridie Thong, our head teacher, and her team have spent part of their summer planning the new year ahead. A full agenda of academic learning, music, art and sport, inside and outside of the classroom will be in place and no doubt the themes and activities will as ever be challenging and stimulating.

MODBURY SCHOOL AND PRE-SCHOOL FUN RUN 30 SEPTEMBER

Time to get your running shoes on and start training. The venue is the school field and there will be a BBQ/ram roast, bouncy castle and various other activities to keep the children amused, as well as live music and a beer tent. **DON'T MISS IT.** Good luck for the coming year to all children, parents and teachers who are new to our school and to those who are have been with us some time.

Enjoy...

Chris



**The Royal
British Legion
Modbury
Branch**

Our next meeting will take place on **Monday 1st October 2007** and will be **The Annual General Meeting**. Contact Bill Sloman, Chairman, 830425, if you require details. New members welcome, you do not have to be ex-service.

Many thanks to everyone who contributed items for our Cake Stall on July 21st which resulted in the sum of £137.00; also we are grateful to all who supported the street collection on 4th August when we raised £172.70. Watch out for news of a Coffee Morning which will be the next fund raising event in aid of the Poppy Appeal.

David Mitchell

**MODBURY LOCAL
HISTORY SOCIETY**

Programmes for our next series of talks have now been distributed and we begin on **September 12th at 7.30 pm** in the Assembly Rooms at the White Hart, by kind permission of the management. The speaker on this occasion will be Bill Scarratt from Kingston whose subject will be 'William King, Master Mariner. Born at Wonwell in 1816, he died at Salcombe in 1883, and he was involved in the fruit trade. This illustrated talk is sure to be interesting!

At the end of the evening our Treasurer, Stephanie Linnell will be collecting subscriptions, which remain at £5.00 for the 2007 – 2008 series, or £2.00 per meeting for casual visitors – who are always welcome. Coffee will be available.

David Mitchell

**MODBURY
SOCIETY NEWS**

**A date for your Diary
Sunday 30 September**

A circular walk around Bigbury
Meet at 2.00 pm in the
Royal Oak Car Park

Parts of the walk are hilly and the duration is about 2 hours, returning to the Royal Oak, where teas are available.

*Anyone requiring transport
Contact 830595.*

M Barnett

**MODBURY FRUIT
AND PRODUCE
SHOW - 2007**

There has been some material discovered that describes the Modbury Show back in 1904, making this one of the longest-running shows in this area - 103 years, with a break for war years.

Despite the bad weather we have all suffered this year, the show was a great success and the Memorial Hall was once again a blaze of colour with all the exhibits. I was not expecting to see so many garden flowers because of the wet weather but the exhibitors did very well. The fruit section was well down as the wet had turned much of it mouldy. There is a great shortage of pollinating insects this year because it has been so cold so the runner beans are a little behind, as with many other vegetables.

The cookery was well up on previous years with 103 entries. The lemon cake section had eight entries and first prize was won by a gentleman who also took first prize in the over 60's class for fruitcake. It is not often we have men entering the cookery.

The children did us proud with all their exhibits. The Modbury Brownies entered 15 drawings in the section 'Draw a Farm Animal' and the winner was a cow with lovely long eyelashes - it was drawn really well and caught the judge's eye. In the 'Animal made from Fruit or Vegetable' there was a beautiful penguin; I think the idea came from a series on the television. When it came to the children's prizegiving I don't know who was more excited- the mothers or the children.

There was an exhibition from The Modbury School Art Club, ages ranging from 5-11 years old. There

were paintings pottery and models; the display was excellent and was the talking point of the afternoon. We will probably have a class for pottery in next year's show so I hope to see some entries from you all.

I would like to thank Mr John Burns, our president, for presenting the prizes.

As the show's funds are in good health we were able to present Mr Peter Watts with a cheque for £100 towards the MARS Pavilion Building Fund.

I would like to thank the people who gave their exhibits, and Mr Geoff Fielden once again for conducting the auction - this raised just under £200 for the show funds. I must apologise to those people who had their exhibits taken for the auction without their permission, due to someone over-enthusiastically clearing away – very sorry! I hope this won't put you off entering another time.

Thank you to Joan and the ladies for the lovely lunch and to everyone who helped during the day.

I hope to see you all again next year.

Angela Peters, Show Secretary

**See Page 9 for a list of the
Prize Winners**

**THANK YOU
MODBURY**

We would like to say thank you to all our Modbury friends for the wonderful wedding gifts presented to us on 30th June. The bowl has pride of place in our lounge and the goblets make the champagne taste even better!

The biggest thank you however, goes to Sarah Wyatt for organising a surprise party where many of our friends were able to enjoy a pre wedding celebration with us. Despite the rain on our wedding day, we had had a fabulous time and I can report that the only murder committed during the evening was purely fictional and part of the entertainment!

Bee and Richard Griffiths

MODBURY PARISH COUNCIL MEETING

Minutes of Parish Council meetings are published in full on the Parish Notice Board outside the Post Office.

PLANNING DECISIONS

Modbury Parish Council recommended approval and SHDC granted permission for:

Unit 10C, New Mills Industrial Estate – Change of use to kitchen display.

1 Oakwood Drive – re-submitted plans for erection of conservatory.

Modbury Parish Council recommended refusal and SHDC granted permission for:

The Old Surgery, Moon Lane – Retrospective application for erection of shed, fencing and canopy over patio doors.

Modbury Parish Council recommended refusal and SHDC refused permission for:

5A Church Street – Conversion of detached garage to dwelling.

SHDC refused permission for:
11 Oakwood Drive – Work to trees under Tree Preservation Order.

SHDC advised:

Spriddlescombe Manor – Agricultural determination for erection of extension to existing barn – prior approval not required.

Modbury Parish Council made the following planning recommendations:

Key Cottage, Brownston – Extension to dwelling for disabled use – recommended as submitted.

Methodist Church, New Road – Re-submission of application for conversion to two dwellings – recommended as submitted.

TEMPORARY ROAD CLOSURE

Galpin Street will be closed between 10th – 13th September 2007

EQUAL OPPORTUNITIES POLICY

The Parish Council formally adopted an Equal Opportunities Policy Statement which will be displayed in the Parish Office.

COMMUNITY SUPPORT GRANT

Devon County Council has advised the Modbury Parish Council that a Community Support Grant of £850 will be available for distribution to support community activities within the Parish. The grant will be distributed on a 'matched funds' basis – i.e. for every £1 of grant the successful applicant organisation must match the grant on a £ for £ basis. Any organisation wishing to apply for grant support must apply in the first instance to David Hansford, Clerk to the Council, 6 Modbury Court, Church Street, who can provide advice on the application process and submission to Devon County Council for consideration.

POLICE SURGERIES

PCSO Stacy Thorn – Our local Community Support Officer will hold open surgeries on the first Monday of every month from 5.00 pm to 10.00 pm – commencing Monday 3rd September. These will be held in the Parish Office at 6 Modbury Court, Church Street.

Stacy will be happy to discuss any neighbourhood concerns that you may have so please **do** make use of this service, which will improve the overall policing of our town and make the Policy Family more accessible to all of the community.

MEMORIAL HALL

The Memorial Hall has several large specimen trees within the grounds that have recently been tempting adventurous young spirits to try their climbing skills. Parents are advised that the Trustees of the Memorial Hall **cannot be held liable** if accidents or injuries occur as a result of this type of activity.

Memorial Hall Trustees

MODBURY SILVER THREADS SEPTEMBER

Tuesday 11th
Meeting at Club - 1.45 pm

Tuesday 25th
Trip to Torcross & Dartmouth
11.00 am - £8

Tel: 01548 830845

MACMILLEN COFFEE MORNING

**Saturday 29 September
10.00 – 12.00**

*Coffee and Biscuits: £1.20
Homemade Cakes & Produce*

Raffle

**Bistro 35
Church Street**

MODBURY EDUCATIONAL FOUNDATION

A small grant is available to students who are resident in Modbury and are starting either a course of Further/Higher Education or a Vocational Course this autumn.

Applications in writing should be made by October 6th 2007 to:

**Rev Neil Barker
The Vicarage
Church Lane
Modbury PL21 0QN**

PROPOSED MODBURY COMMUNITY, SPORTS AND RECREATION CENTRE – Fund Raising Appeal

In the July Messenger we carried a leaflet setting out the background to the above appeal and indicated some of the support and help we need if we are to be successful. In this edition we would like to give you more information on both progress and ways you can help:

YOU MAY RECALL:

- We need approximately £383,000 to build a community, sports and recreation centre.
- We have raised approximately £19,000.
- We have applied for £316,000 from the Big Lottery.

HOW ARE WE DOING?

- Our lottery application is going through the Stage 1 process – the first step telephone interview has been completed. We expect to know in early September if we can progress to Stage 2.
- If we get clearance to go on to Stage 2 then this could take up to 9 months before we will know if we have been successful.
- We have a small team working on fund raising events but need help - see below.

WHAT YOU CAN DO

- If you are feeling generous (and a special thank you to those who have already done so) then donations should be sent to P Jolly, Treasurer at Silverhill, 3 Trevear Gardens, Modbury. (Made payable to 'Modbury Association of Recreation and Sports').
- Please support our events during the next 18 months – not only will you have some fun but you will be making a vital contribution to the appeal.
- We urgently need helpers to run with specific fund raising projects. We have lots of ideas but need people who will be responsible for an event. If you are willing to get involved contact either Nikki Mitchell on 831160 or Peter Preston on 831324.

➤ Any lottery grant money over £250,000 has to be matched £ for £ by cash or services that the appeal committee have raised. So an electrician who has a charge out rate of £30 per hour who gives us 30 hours work will count as £1,050 worth of matched funds. So you can see that this type of support from skilled tradesmen and women is vital.

➤ JOIN THE MARS LOTTERY

The lottery is drawn every month. 50% of the income each month goes to the fund and 50% to prize money split 1st prize 30%, 2nd prize 20% and 3rd prize 10%. **If you would like to join then contact Lynn Weeks or any member of the MARS committee.**

£13 means you are in the draw for twelve months or £7 for six months. We can even arrange to collect your subscription from your home. **Call Lyn Weeks now on 01548 830007 to join** or if you would like to pay by standing order **call Phil Jolly on 01548 831263.**

WHO WE ARE AND WHAT WE WILL DO:

- ❖ Modbury Parish Council established the Modbury Association of Recreation and Sports (MARS) as a sub committee several years ago. It is the MARS committee who are sponsors of the new facilities planned building and associated fund raising. The committee is made up of: Peter Watts, Grace Webb, Phil Jolly, Jim Pefford, David Rickman, Roy Sims, Mike Tillett, Brian Weeks, Lyn Weeks, Nikki Mitchell and Peter Preston.
- ❖ Through the Messenger and public forums we will keep parishioners advised of progress on both the building plans and fund raising.

THE PLAN OF THE PROPOSED NEW BUILDING IS SHOWN ON THE OPPOSITE PAGE

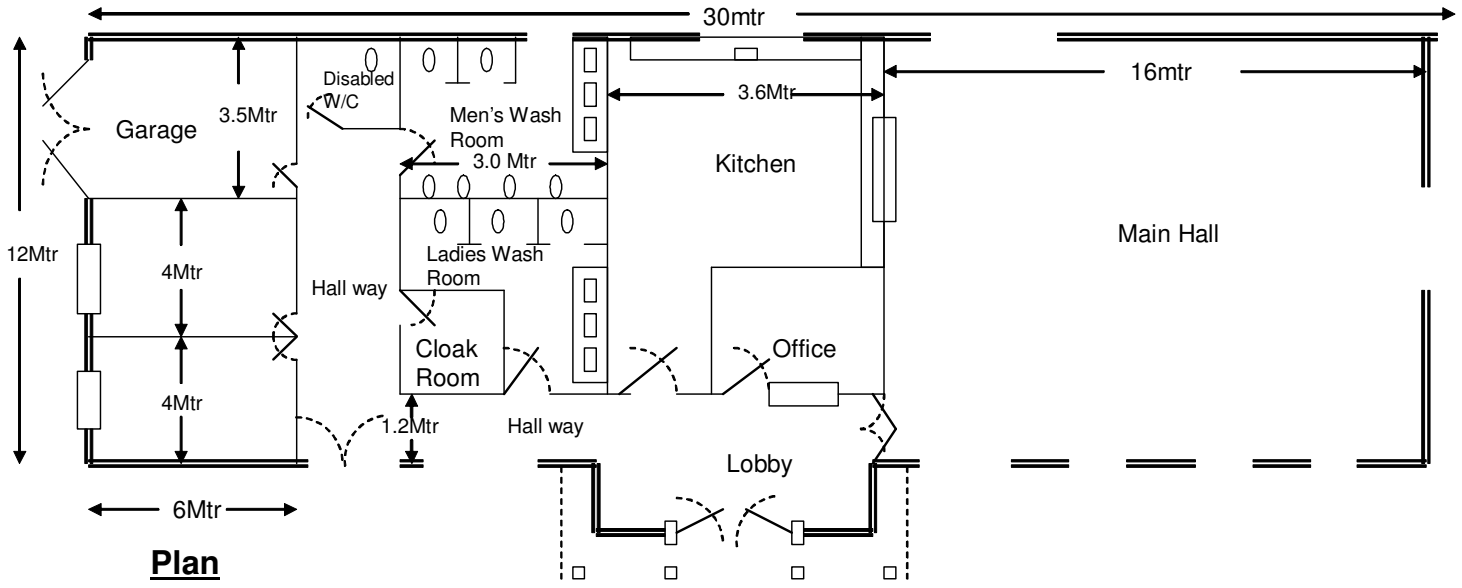
CALLING ALL COOKS

We are going to publish a **MODBURY COOKBOOK** in aid of the **MARS APPEAL** and need all your favourite recipes so that not only can we claim to be 'Plastic Bag Free' but we will have the best recipes in the South Hams, if not England!! You know the ones that always work and always get the "Oh great, my favourite" from Dad, the children or friends. Tell us why it is so popular and why not add a little bit about yourself and where you live in the South Hams, which will add a real interest when we put your favourite into print.

Starters, Mains, Puds, Salads, Jams/Chutneys, Cakes/Biscuits – whatever you like as long as it is great to eat.

Don't be shy – send your recipes by e-mail to prestons@onetel.com or on paper to the Parish Office, c/o David Hansford, 6 Modbury Court, Church Street, Modbury PL21 0QR.

Please be quick as we would like to get something prepared in time for Christmas.
Your chance for a bit of fame - and it will make a great Christmas present too.



MODBURY FRUIT AND PRODUCE SHOW LIST OF WINNERS



Cup/Trophy	Winner	Cup/Trophy	Winner
BL Cup	Mr J Ellis	Children's Cup - Girls	Miss S Laurence-King
Percy Rogers Cup	Mr J Ellis	Marjorie Cross Trophy	Miss C Edwards
Garden Voucher	Mr J Ellis & Mr W Perkins	Mable Williams Trophy	Mrs M Timmis
Reuben Mears Cup	Mr J Ellis	William Baker Cup	Mr I Davies
Gladys Moysey Cup	Mr W Perkins	M & R Jackman Cup	Mr D Watts
Wilkinson Cup	Mrs A Hickman	Pete's News Prize	Miss M Fox
Axon Shield	Mrs M Watts	Special Prize	Mr J Ellis
Children's Prize	Miss S Laurence-King	William Jackman Cup	Mr R Jackman
Special Prize	Mrs G Whitford	Bill Spink Cup	Mrs S Hoskins
Treasurer's Cup	Mrs M Watts	Garden Voucher	Mr W Perkins
Joan Law Trophy	Mrs G Whitford	SPECIAL PRIZES	
Ray How Trophy	Mr W Perkins	Mary Rose Rogers	Mr P Preston
Cookery Prize	Mrs G West	R & H Pickles	Mr W Perkins
Art Palette	Mr T Harris	Mrs V Flatman	Mrs J Coultas
Children's Cup - Boys	Master J Laurence-King	Murial How Cup	Miss J Grace



MODBURY MILLENNIUM MEADOW

VOLUNTEER WORK PARTY

We will be having another working session on site on: Sunday 16th September – 10.00 am start

A variety of tasks are planned including the removal of a post and wire fence, moving a quantity of stone in readiness for building up a hedge bank and scrub clearance to prepare for the planting of a new orchard area.

We will be providing the usual refreshments of drinks (hot and cold) plus a hot pasty for lunch. Please call to let us know if you can make it so we have some idea of numbers.

If you have some tools suitable for scrub clearance please feel free to bring them along. Stay as long or as short as you wish.

*Thank you as always for your kind support
Modbury Millennium Meadow Committee
(Contact numbers 830550/830007)*

MODBURY P3

Congratulations to Robert Brown of Cromwell Park for winning the Norman Fuzeland Cup!



This splendid cup has been kindly donated by Roy Sims in memory of Norman who was a well known and highly respected lifelong resident of Modbury. The cup will be presented annually to anyone who has achieved something special in the P3 Fair Walks. Robert, who is only 10 years old, completed the longest 21 mile route with his father and is a credit to his generation. The cup was presented to him at Modbury Primary School during assembly time at end of term by Headmistress, Bridie Thong.

*Mike Oakins & Brian Weeks
(Tel 830550/830007)*

St George's Church Fete Nursery Rhyme Quiz

Many thanks to everyone who bought a copy of the Nursery Rhyme Quiz at the Church Fete.

All 100 copies were sold, raising £100 for church funds. 27 entries were returned, of which 14 were correct.

Congratulations to the winners: Fran, Helen and Fiona Locke - being the people with the first correct entry. Well done.

CALLIGRAPHY CLASSES SEPTEMBER

Calligraphy and small book making will re-start in St George's Undercroft on:

Tuesday mornings: 10-12 - 18 September
Tuesday evenings: 7-9 - 18 September
Thursday mornings 10.15-12.15 - 20 September

For 10 weeks: Cost £65

**If you are interested in joining please phone
Caroline Barker: 830260**

DEVON COUNTY COUNCIL CLASSES @ MEMORIAL HALL

Beginners' Italian

Thursday 27 September
12.45 pm – 2.45 pm

Furniture Decoration – Prepare & Paint

Saturday 20 October
10.00 am – 4.00 pm

THE GREEN CORNER



“Global Warming” is out – the preferred term now being “Climate Change”. How many people remember an Environment Minister last year urging us to conserve water in the garden by planting Mediterranean type plants to cope with the expected arid summers? No consolation to the flooded communities of Gloucester, but it does remind us that Climate Change is a fact of life, the only debateable point being the proportion due to human activity.

Grant aid is available to everyone to reduce their carbon emissions through Government, energy suppliers and Local Authorities, so if you're thinking of changing your central heating boiler or putting in new or extra loft or wall insulation it's worth finding out about them. For example, everyone is entitled to a grant of between 30% and 70% of insulation costs, and you may be entitled to 100% if you are on certain benefits or tax credits. Have a look at www.energysavingtrust.org.uk, or telephone a really helpful Andy in Plymouth on 0800 512 012 for all manner of green advice. It pays to save the planet!

Or if the summer days are too wet to get out, visit www.devon.gov.uk, follow the links to Environment and Climate Change and look at “Making Devon Greener”.

Jeff Booth, Parish Plan Green Issues Group

MADCAP MONDAYS!

For one day a week only...

You can have a 3 course dinner, including a glass of wine, for just £15...*you can't get better than that!*

Not to be used in conjunction with any other offer, at Manager's discretion



Church Street, Modbury
T: 01548 831561

E: info@whitehart-inn.co.uk

KIDS' PARTIES

FOR ANY CHILD ATTENDING
MODBURY SCHOOL, HIRE THE
FUNCTION ROOM FOR A
PARTY FOR £10 AND WE
WILL DONATE THE FEE BACK
TO MODBURY SCHOOL PTA
CALL TRACY FOR DETAILS OF
FOOD/ENTERTAINMENT

WHITE HART PUB QUIZ!

Starting on Wednesday 5th September and
continuing every other Wednesday
throughout the year.

Bring your friends along and try your luck!

No more than 6 to a team.



Fabulous set lunch menus...

2 courses - £9.95 3 courses - £12.95

If it is a lighter bite that you are after, sample our
new tapas menu...*a true taste of the Mediterranean!*

1 dish - £2.95, 3 dishes - £8.50, 5 dishes - £13.95

SALSA CLASSES

Join us for our beginners salsa classes
starting on Thursday 13th September...
learn a new dance form or just perfect
what you already know, either way these
classes promise to be excellent fun -
please phone for more details.



'UNION NEWS'

Fore Street, Holbeton T: 01752 830288 E: info@dartmoorunion.co.uk

Winner of the Les Routiers National Dining Pub of the Year
AA Rosette award winner

Tuesday 4th September-

'It's a Lottery!'

One table will win their entire evening's meal.... At 8:45pm names will be pulled out
of a hat and everything ordered up until that point will be complimentary.

This offer only applies to tables of 4 or less - larger tables can still participate, please note the
value of 4 covers will be complimentary



Live music dates

Tues 11th - Pete Canter Duo

Tues 25th - Steve Jenner Guitar Duo



Wednesday 26th September - A Taste of Autumn Supper

7-course Gourmet Supper -£29.95 pp

Each month we hold delicious gourmet supper evenings where we match the foods and wines to create
a truly delicious evening meal experience...Evenings not to be missed!



TALL ORDERS

Landscaping & property maintenance

~lawn mowing ~hedge trimming

~brushcutting ~clearance...

HARD LANDSCAPING

~fencing ~decking ~patios

~natural stone walling

CHAINSAW & TREE WORK

UNDERTAKEN

Chipper available/logs supplied

For a friendly free quote call

James Tall on 01548 831139 or

mobile 07967258318

(fully insured)

Accountancy Services

- Accounts
- Tax Returns
- Start-ups and Business Plans
- Bookkeeping, Payroll & VAT
- Fixed fees in advance
- Self-Assessment and CIS

Contact Alex Smith (ACA) on

01752 551 888

To arrange a free initial, no obligation meeting



RH

TAXIS

Tel Richard:
07876 072 441

Modbury * South Hams

Safe * Reliable *
Friendly

Local and long distance

Acupuncture Can Help



Fiona Matthews SRN LicAc MBACc

Registered acupuncturist and a member of the British Acupuncture Council, providing acupuncture treatment since 1997, from her clinic at Sunnydale Natural Health Centre in Ivybridge and also at the Plymouth Nuffield Hospital

Specialising in :-
stress relief, pain management, fertility, menopausal symptoms, digestive disorders and facial enhancement acupuncture (non surgical facelift)

Sunnydale Natural Health Centre,
Cornwood Road, Ivybridge

For further information or to make an appointment please
contact Fiona Matthews

Telephone 01752 895401
Mobile 07767 665677



Kingsbridge Eye Care
1 The Promenade
The Quay,
Kingsbridge
Tel 01548 856 854

'Look no further...'

NHS/Private Eye Examinations
Everything from designer sunglasses
to low cost lens and frame packages
Contact Lens Specialists

Testing daily

**A personal and professional
service by Optometrists:**

Nigel Frost BSc (Hons) F.C. Optom,
Angela Hickman BSc (Hons) F.C. Optom
Kathryn Poole BSc (Hons) M. C. Optom

Nigel Frost
Optometrist
3 Chene Court
Modbury
Tel 01548 830 944



NATWEST MOBILE BANK

The NatWest Mobile
Bank

Visits Modbury every
Friday morning

It can be found in the

**Poundwell Meadow
Car Park**

between

10.15 am and 11.00 am

ANTIQUe FURNITURE REPAIRS & RESTORATION

Veneer Repairs, French Polishing
Hand stripping & Re-finishing
Wood-turning

CANEWORk & RUSH SEATING
Danish Cord & Seagrass



Guye Roberts
MASTHEAD
Parsonage Road
Newton Ferrers
Plymouth
DEVON PL8 1AS

01752 872805

Website : www.guye.co.uk
Email : guye@guye.co.uk

Robert Houcke DOMESTIC APPLIANCE REPAIRS

All makes of electrical
appliances repaired by an
experienced engineer
covering the South Hams.
Specialising in

BOSCH

NEFF

SIEMENS

01803 858411

07714 386745

Avonberry Garden Service:

Time to revitalise your garden or create something new?
We offer a full, professional gardening service, from help
with design, to renovation, pruning, and general care.

Call for advice and quotations.

Year round care given to your garden



Telephone: 01548 830536
or 07977 534125
Email: Gandhservices@aol.com



Auction of Promises

12th October 2007 @ 7.30pm

1st lot drawn @ 8pm

Interval and entertainment 9 – 9.30

Tickets £2.50

(programme of lots available soon)

**LOTS AND LOTS OF FANTASTIC *LOTS*
on offer - bring your pennies and
your pounds! It all adds up!!**

*A joint fundraising event between
(Modbury Twinning Association, Modbury
School, Modbury Pre School)*



EDEN LANDSCAPING AND TREE CARE

- Lawn Mowing
 - Hedge cutting
 - Garden clearances
 - All tree work (NPTC Qualified)
 - Chipping and chainsaw work
 - **Fully insured**
- Strimming
Turving
Pressure washing

**Logs and wood chip for sale all year round
for a free friendly quote call Adam Sloman on
01548 830611 or (07760 324419)**

AQUA Hair Design

**Modern Organic Products
(M.O.P.)**

**MOP is a brand that offers a new
standard in professional products
It creates simple solutions that
are organic**

Late opening Fridays
8.00 pm
No 7 Modbury Court

01548 831260

**Modbury Tennis Club
invites you to see**

'Behind the scenes at Agatha Christie's House'

Sunday 23 September 2007 from 2pm

A private view of Greenway on the River Dart
former home of Agatha Christie
with a talk by Robyn Brown, the Property Manager in charge
Followed by tea and home-made cakes in the Courtyard and time to
explore the glorious gardens

Car Parking available at Greenway, or take the ferry from Dittisham
Price: £12.50 - All funds to go to Modbury Tennis Club courtside hut project

Tickets from:
Naomi Ainsley
4 Brownston Street
Modbury. Tel: 01548 830794

Modbury tennis club members will be happy to provide transport.
If you would like a lift, please phone Naomi.

VOICES OF THE WEST

This informal literary course of twelve lessons will take authors with a natal, domiciliary or strong artistic link to the West Country as its unifying theme. We shall consider a wide range of writers from those of the first rank to a reappraisal of the almost forgotten. The area of study will be how their love of the West inspired some writers to explore great universal themes while limiting others to localised interest and appreciation. There will be a coffee morning at the address below on Wednesday 26 September at which a full prospectus will be available and places may be reserved. If you are unable to attend, give Ann a ring for information. Classes will be held on both Monday and Tuesday afternoons as previously.

Tutor: Ann Oakins MA PhD
Telephone: 01548 830550 e-mail ann.oakins@virgin.net
Where: 1 Benedict Way, Modbury
When: Commencing 2.30 pm Monday 7th and Tuesday 8th January 2008
Duration: Sessions will run for 2 hours, plus 20 minutes break

ROCKSHOP

Fridays 7.00 – 9.00 pm
Modbury School Hall
10p Entrance

Younger Group Ages 8 – 11

Older Group Year 7
Upwards

Hockey, Basketball, Giant
Skipping, Football, Craft,
Drama, Tuckshop and
also for the older
group: Community
Activities, Occasional
Discos and Live Bands.

A Christian Youth Group
established in Modbury
for over 30 years.

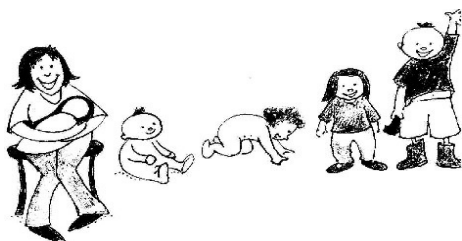
EVERYONE WELCOME

Contact: David 831589 or
Simon 830857

MODBURY TIDDLERS

A Community Run Group for
Small People aged 0 – 5
(and for the people who wipe their
noses!)

**PLAYTIME FOR THEM!
COFFEE AND A CHAT FOR
US!**



Fridays 9.30 – 12 noon
£1.50 per child
@Modbury Memorial Hall
Enquiries ring Georgie:
01548 831038

A.R.B. GARDEN SERVICES

EXPERIENCED
TRADITIONAL GARDENER

**MAINTENANCE &
SENSITIVE
RESTORATION**

CV AND
REFERENCES AVAILABLE

Alan Boyce
16 Cromwell Park Modbury
Ivybridge Devon PL21 0RS

01548 830747

07989 415385

MODBURY BADMINTON CLUB

Memorial Hall
Tuesdays
7.30 – 10 pm

*New members always
welcome
For further information
please contact:*

Gill Jolly

Tel: 01548 831263

SHORT MAT BOWLS

The Modbury Short Mat
Bowls Club

Meet every

WEDNESDAY

7.00 pm at the
Memorial Hall

**New members are
welcome**

Come along and try it – it's fun!



NOVEL FORUM

Following the summer break we
shall be meeting at the home of Ann
and Mike Oakins, 1 Benedict Way
(with many thanks) on Wednesday
5 September at 7.45 pm when we
shall discuss the following books:

Wilkie Collins
Armada

Kent Haruf
Plainsong

Evelyn Waugh
Brideshead Revisited

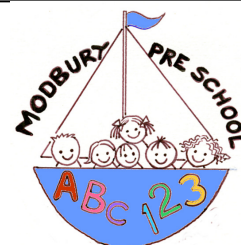
The books for November (same
time and place, meeting on 21
November are as follows:

Robert Harris
Imperium

Somerset Maugham
The Painted Veil

Tim Pears
In the Place of Fallen Leaves

To enquire about the availability of
books, please contact
Ann on 830550 or
Mary-Rose on 830310



**FULL DAYCARE
5 DAYS A WEEK**

Outstanding OFSTED Report
Among top 3% of country!
Your 2½ - 5 year old can now
attend preschool all day

Toddler Group Thursday
1.15 - 3.45 pm, all welcome, with
parent/adult

2 year olds are welcome
Tuesday to Friday afternoons
Please phone or drop by to enquire
about sessions to suit your needs.

**Modbury Preschool
Back St, Modbury**

01548 831477

Registered Charity No. 1039616

Advertising Tariff for The Messenger

In order to support the publication of The Messenger, advertising relating to business, or of a commercial nature will be charged at the rates shown below.

Information for community use will continue to be published free of charge.

Single Insertion

1/9 th page	£10.00 per insertion
2/9 th page	£20.00 per insertion
1/3 rd page	£30.00 per insertion
1/2 page	£40.00 per insertion

Three Insertions

1/9 th page	£8.00 per insertion
2/9 th page	£16.00 per insertion
1/3 rd page	£24.00 per insertion
1/2 page	£32.00 per insertion

Six Insertions

1/9 th page	£6.00 per insertion
2/9 th page	£12.00 per insertion
1/3 rd page	£18.00 per insertion
1/2 page	£24.00 per insertion

Eleven Insertions

1/9 th page	£4.00 per insertion
2/9 th page	£8.00 per insertion
1/3 rd page	£12.00 per insertion
1/2 page	£16.00 per insertion

Artwork of good black and white copy to be supplied.
Payment must be made in advance.

Cheques should be made payable to Modbury Parish Council and sent to The Parish Office, 6, Modbury Court, Church St. Modbury PL21 0QR.

**For further information
please contact**

**David Hansford on
01548 830222**

MODBURY PARISH COUNCIL PARISH OFFICE

6 Modbury Court, Church Street
Modbury
Tel: 01548 830222
e-mail modburypc@tiscali.co.uk

Hours of Business-
Mondays 9.00am-1.00pm

Parish Surgery
10 – 11 am every Saturday

Planning Applications

Notices of planning applications lodged with SHDC are displayed on the Parish Noticeboard, outside the Post Office. Copies of plans relating to these applications can be inspected at the Parish Office during above office hours or when a Councillor is on duty.

Contacting Parish Councillors

Parish Councillors attend the Parish Office, on a rota basis, on Saturday mornings from 10.00 - 11.00am. Should you have any parish matter you would like to discuss come along to the Office at 6 Modbury Court. You can also call in to the Office on Mondays from 9.00am - 1.00pm and speak to the Clerk, David Hansford.

He can also be contacted by phone on 01548 830222 or e-mail at modburypc@tiscali.co.uk

At all other times you can leave a message either by phone or e-mail (see above) or alternatively you can write a letter or speak at the public forum held at the beginning of each monthly meeting of the Parish Council, held on the second Monday of each month at 7.00pm in the annexe of the Memorial Hall.

MESSENGER CLOSING DATE

*The closing date for the
October Messenger is
16th September*

Please send all copy, by e-mail to prestons@onetel.com or deliver to the **Parish Office** (please note that all advertisements should be submitted **ONLY** via the Parish office – see below).

Payment for all advertisements must be made in advance. Cheques should be made payable to Modbury Parish Council and sent to The Parish Office, 6, Modbury Court, Church Street, Modbury PL21 0QR. For further information please contact David Hansford on 01548 830222.

The Modbury Messenger is published by The Modbury Parish Council and is printed by SHDC, Follaton House, Totnes.

The views expressed in the Modbury Messenger do not necessarily represent those of The Modbury Parish Council.

SOUTH HAMS DISTRICT COUNCILLORS

Our South Hams District
Councillors are:

**Geoffrey Fielden –
830916**

**Mark Lawrence –
830423, or
mark.lawrence@totalise.co.uk**

Our representative on
DEVON COUNTY COUNCIL
is William Mumford and he
can be contacted on:

**01752 340967 or
william.mumford@devon.gov.uk**

MODBURY DIARY – SEPTEMBER 2007



Monday 3 rd	Police Surgery	Parish Office	5.00 pm – 10.00 pm
Tuesday 4 th	Badminton Club	Memorial Hall	7.30 pm – 10.00 pm
Wednesday 5 th	Short Mat Bowls	Memorial Hall	7.00 pm
Friday 7 th	Rock Shop	School Hall	7.00 pm – 9.00 pm
Monday 10 th	Parish Council Meeting	Memorial Hall Annexe	7.00 pm
Tuesday 11 th	Badminton Club	Memorial Hall	7.30 pm – 10.00 pm
Wednesday 12 th	Short Mat Bowls Local History Society	Memorial Hall White Hart	7.00 pm 7.30 pm
Friday 14 th	Rock Shop	School Hall	7.00 pm – 9.00 pm
Sunday 16th	Messenger Closing Date		
Sunday 16 th	Working Party	Millennium Meadow	10.00 am
Tuesday 18 th	Badminton Club	Memorial Hall	7.30 pm – 10.00 pm
Wednesday 19 th	Short Mat Bowls	Memorial Hall	7.00 pm
Friday 21 st	Rock Shop	School Hall	7.00 pm – 9.00 pm
Tuesday 25 th	Badminton Club	Memorial Hall	7.30 pm – 10.00 pm
Wednesday 26 th	Short Mat Bowls	Memorial Hall	7.00 pm
Thursday 27 th	DCC: Beginners' Italian	Memorial Hall	12.45 pm – 2.45 pm
Friday 28 th	Rock Shop	School Hall	7.00 pm – 9.00 pm
Saturday 29 th	MacMillen Coffee Morning	Bistro 35, Church Street	10.00 am – 12 noon
Sunday 30 th	School Fun Run Modbury Society Walk	School Field Royal Oak, Bigbury	11.00 am 2.00 pm

Kitchens By deZine

An individual kitchen service from design to installation

Quality fitted kitchens installed with
leading brand appliances and accessories of your choice

Tel: 01548 830819 Mob: 07766 821548 Fax: 01548 831519

Mackintosh House, Palm Cross, Modbury

email: info@deziner.co.uk

A Member of the Guild of Master Craftsmen