



illustration - Jennifer Johnston

For the People of Modbury - Best Kept Large Village 2013

Volume 15, Issue No. 194

May 2015



Organisers of the Modbury May Fair 2015 are hoping this year's annual celebration will draw visitors from far and wide.

From Sunday May 3, to Sunday May 10 the town will hum with activity with a huge range of events, designed to ensure there is something for everyone.

The theme of Great Inventions is to mark some of the ingenious ideas in Modbury's history and perhaps discover a few new ones.

One of the pioneers of the creation of steam engine, Thomas Savery, was a former local name, as well as the Stetson family, originators of the famous cowboy hat.

New to the celebrations this year are a VE day street party as well as the new-look market, which has an exciting range of stalls from vintage linens to jewellery and shabby chic furniture. The Modbury Barrow Market will also make it's first appearance along with Pop-up Art, featuring a selection of Modbury artists.

There will be all the traditional events such May Fair walks, Maypole dancing, complete with new maypole made by Mark and Allayne Harris, the famous Modbury Mile, pet show, the Great Modbury Bake Off, the Treasure Hunt and many more events.

The traditional highlight of the week, the carnival procession, accompanied by the high-energy Crooked Tempo Samba band, takes place on Saturday, May 9. Anyone can join in whether on truck, trailer, milk float, pushbike, horse-back or on foot. There are cash prizes for the winners

Andrea Kuhn

Hoedown with Hot Diggety!



One of last year's most popular May Fair events, the South Hams Hoedown, is back for 2015 – this time at the slightly more weather-proof venue of the Memorial Hall - on Friday 8th May at 1930. Modbury's own Hillbilly boppers *Hot Diggety!* will once again provide the live music along with world-famous square dance caller Jeremy Child.



"The marquee on the QE2 field was great last year", says singer Dave Fardon, "but when we played the Memorial Hall for a party in January we realised there's a much bigger dance area. We can do things we couldn't do last year - bigger and better dances - and there'll be a lot less mud!"

So sharpen your spurs, round up your posse and get ready for a great night of family fun, which includes bar and barbecue. Tickets are £7 on the door, or £6 in advance from Pickles. An advance family ticket for 4 is £20.

For more Fair Events, see page 10

Parish Council News

Neighbourhood Plan

An opportunity to shape the long term future of Modbury Parish! Making a balanced, vibrant and healthy place to live.

What is a Neighbourhood Plan?

In 2011 the Government passed the "Localism Act" which established the rights of communities to produce Neighbourhood Plans. Neighbourhood planning gives communities direct power to develop a shared vision for their neighbourhood and shape the development and growth of their local area. The **community led plan** can influence how Modbury Parish develops up to and beyond 2031.

How to get involved?

- ◆ Visit our stand at Modbury Fair
- ◆ Take part in our meetings
- ◆ Join our Facebook page (Modbury Neighbourhood Planning Group)
- ◆ Look out for future events and consultations

All meetings and events will be publicised in the Messenger, Facebook and on the Parish notice board.

The aim of the Neighbourhood Plan and its success will be measured by the responses from the community and our ability to effectively present all views and opinions; this is a **Community Driven** initiative.

A core group of interested volunteers has developed to organise information and plan events. If you are keen to be involved in the helping your community by taking part in this please contact Ann Turner (Chair) 01548 830606, annc.turner@hotmail.co.uk

**VISIT US on our Stand at
MODBURY FAIR Saturday 9th May**

Royal British Legion VE celebrations

The Modbury Branch has prepared an exhibition to commemorate the VE Day celebrations. It will be displayed at Modbury Fair, and it is hoped also within the Church and at the Devon Rural Archives. If any Parishioners have any photographs or documents relating to VE day Celebrations in Modbury, we would like to arrange to copy them for the Modbury History Society Archive.

Roy Sims 01548 830530

Elections May 7th

The Parish Council is pleased that enough people have agreed to stand for the Parish Council so that a vote will take place on May 7th, at the same time as the General Election. A full list of candidates is given below.

BARNES Christopher Gerrard	37 Long Park
BERRY Robin	1 Ayleston Park
BROWN Lucy Caroline Mary	The Green, Palm Cross
COLE Bill	Tree Tops, Plymouth Rd
HARVEY John	Old Farm, Shearlangston
JENKINS Allan	9 St. Georges Close
JOSEPH John Leonard	1 Barracks Rd
LAWRENCE Mark	11 Poundwell Street
RAYNER Stephanie Jane	15 The Priory
RICKMAN David John	11 Wakeham`s Close
ROSEVEAR George Henry William	The Quoin, 4 Bigbury Court
TAYLOR Bernard	4 Silverwell Park
TURNER Daniel Joseph	20 Brownston St
WARD Trevor Norman	Taormina, Barracks Rd

There will also be a vote for the new ward of Charterlands on South Hams District Council. This ward comprises the parishes of Bigbury, Kingston, Modbury and Ringmore. The candidates are:-

- ◆ Jan Chapman (Green Party)
- ◆ George Rosevear (Independent)
- ◆ Lindsay Ward (Conservative)

Annual Meeting

At the Annual meeting on April 13th many organisations gave a report of their activities over the past year. A copy of these reports is on the parish website.

The Chairman of the Parish Council, Peter Watts, gave a report on the main events of the past year, highlighting the completion of the TRO, the South West Water works in the lower car park, the installation of high speed broadband and the new Green Boxes and the controversial planning applications at Palm Cross Green. He thanked the many people in the Town who help voluntarily with many aspects of community life, be it maintaining our network of footpaths, looking after the Millennium Meadow, helping out at the new MARS Pavilion and the QE 11 Recreation Field. In particular he thanked Jean Carlyle-Lyon who had helped with the parish website for many years and Mary McClary who had edited the Messenger and who had both now stepped down.


The Editorial Committee reserve the right to précis/abbreviate any copy submitted for inclusion in the Modbury Messenger.

The contents of the Modbury Messenger may not be reproduced in any form without the prior written permission of Modbury Parish Council.

Around the Churches



St. Monica's
Roman Catholic Church
St Austin 's Priory
01752 892606
Sundays 8.45 am Mass
Everyone Welcome



The Kingsbridge Estuary
Decorative and Fine Arts Society

History of the Medici

Jacqueline Hyman
May 27th - 7 for 7.30pm
May 28th - 10 for 10.30am
Methodist Church, 100, Fore Street, Kingsbridge
No need to be a member – all welcome
Donation £8 including a coffee or tea

ST GEORGE'S CHURCH
SUMMER FETE
SATURDAY JUNE 20TH 2-5.00PM
BOOK THE DATE.
MORE DETAILS NEXT MONTH

MARS, Royal British Legion
Modbury
Garden of Remembrance

The proposal to build a Garden of Remembrance, on a site at the entrance to the QEII Field is still a commitment. As we have so far failed to obtain external funding; we therefore have to find some volunteers within the community to help create the garden. It will be adjacent to the flagstaff and provide two seats for visitors to enjoy the fantastic views. We are unable to utilise the superb design that Andrew Rathbone produced but we will embrace the circular concept.

We are compiling a list of names of volunteers who would be willing and able, in any capacity, to assist in the realisation of this worthwhile community project.

For further details contact:
Roy Sims. 3 Cromwell Park. 01548 830530.

St George's, Modbury

Services and Events in
May



Sunday 3rd	9.30am	Holy Communion
Thursday 7th	9.15am	Noah's Ark
Sunday 10th	8.00am	Holy Communion
	9.30am	Family Service – May Fair
Thursday 14th	9.30am	Ascension Day Holy Communion
Sunday 17th	9.30am	Family Communion with Sunday Club
Thursday 21st	9.30am	Noah's Ark
Sunday 24th	8.00am	Holy Communion
	9.30am	Morning Prayer
	6.30pm	Deanery Confirmation at Malborough
Tuesday 26th	2pm	Wedding
Thursday 28th	9.30am	Holy Communion
Sunday 31st	10.30am	Team Service at Kingston
	6pm	Living room
Thursday 4th	9.30am	Noah's Ark
Sun 7 th June	9.30am	Holy Communion



A contemporary, Café style evening service
Sunday 31st May at 6pm
St George's Church, Modbury
All welcome. Refreshments.



CORNWOOD PARISH CHURCH
PL21 9QJ
FLOWER FESTIVAL
22 - 25 MAY 2015 10am to 6-00pm
Theme 'Lest We Forget' in Remembrance of WW1
Admission free/ donations for church funds

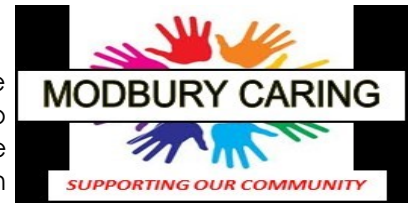
CONCERT OF
MUSIC AND READINGS
Saturday 23rd May 7-30pm
Tickets £10 to include a glass of wine'

SPECIAL SONGS OF PRAISE SERVICE
Sunday 24th May 6-00pm
Contact 01752 837441 www.cornwoodchurch.com

Parish Council Page

Volunteers

The need for more helpers was a common theme in the reports that were given to the Parish meeting. **Modbury Caring** would like more people to help drive patients to appointments. They have recently approved some people to be "befrienders" of elderly / lonely residents but could do with more. Contact **Modbury Caring** at the Parish Office.



The **Christmas Lights "switch on"** needs someone to take on responsibility for organising the events that take place on the evening.

The **Community Emergency Plan** could do with some more wardens for that unpredictable moment when it's "all hands to the pump". If you can help in any way, our Clerk can point you in the right direction.

Flood Warning Equipment

As part of their flood resilience programme Devon County Council have put a river level gauge in the stream above Burns Court. This sends out warning texts or emails should the water rise above certain levels so as to alert flood wardens and property owners to "be prepared". If you would like to receive these warnings, please contact the Clerk. There will be a small fee but it might help with your flood insurance.

MESSENGER CLOSING DATE

For the June edition the closing date for submissions is 10th May

Please send all copy, by e-mail to modburymessenger@live.co.uk.

Payment for all advertisements must be made in advance. Cheques should be made payable to 'Modbury Parish Council' and sent to The Parish Office.

For advertising tariff info please email parishclerk@modburypc.co.uk or telephone 01548 830222

For further information please contact Sally Walsh on 01548 830222 (Monday mornings – or leave a message).

The Modbury Messenger is published by the Modbury Parish Council and is printed by Hardy Print, Ivybridge.

The views expressed in the Messenger do not necessarily represent those of Parish Council.

PERSONAL ANNOUNCEMENTS

(Births, Deaths, Marriages, Thanks etc)

£5 per insertion—Max. 50 words
(Subject to available space)

MODBURY PARISH COUNCIL OFFICE.

2 Galpin Street, Modbury PL21 0QA

Tel: 01548 830222

parishclerk@modburypc.co.uk

Hours of Business- Mondays 9.00am – 1.00pm

Parish Surgery 10 – 11 am every Saturday

Planning Applications: Notices of planning applications lodged with SHDC are displayed on the Parish Noticeboard outside the Post Office. Copies of plans relating to these applications can be inspected at the Parish Office during the above office hours.

Contacting Parish Councillors: Parish Councillors attend the Parish Office, on a rota basis, on Saturday mornings from 10.00 - 11.00am. Should you have any parish matter you would like to discuss come along to the Office or call in to the Office and speak to the Parish Clerk, Sally Walsh. Alternatively you can write a letter or speak at the public forum held at the beginning of each monthly meeting of the Parish Council, on the second Monday of each month at 7.15pm in the Pavilion, QEII Recreation Ground.

NB the May meeting is on the 18th May due to the elections.

Letters to the Editor

After seeing several people walking their dogs around Modbury off leads, I would like to bring it to their attention that it is ILLEGAL not to have your dog on a lead on a public highway. This can be referred to by visiting the Highways website in particular the Road Traffic Act 1988 (Introductory Text, Part 1, Principal Road Safety Divisions, Section 27, Controlling Dogs On Roads).

Jennifer Trigg, Modbury

This morning, Monday 16th March, dog fouling greeted us when we stepped into Burns Lane. It is not the only area of Modbury that has recently seen an increase in dog fouling; Poundwell car park is often seen to be covered with traipsed dog fouling. That area is at least a public area; Burns Lane is private property. There has been a general increase in dogs being allowed off their leads in Burns Lane. Could I please ask you again to remind dog walkers that Burns Lane is private property and that dogs should be kept on a lead while transiting the area. Thank you.

Raymond Jones, Modbury

Local Adverts

**ARE YOU PAYING TOO MUCH TAX ?
ARE YOU GETTING VALUE FOR MONEY FROM
ACCOUNTING SERVICES ?**

*For a free confidential review, and a service second to none
contact :*

MARTIN RANWELL, FCA

ELLIOTT & PARTNERS

Chartered Accountants

Tuckers Brook House, Modbury, Devon PL21 0UT
Tel 01548 830452

e-mail: ranwell@modbury2.eclipse.co.uk
www.elliottpartners.co.uk

**EXTENSIVE EXPERIENCE IN BOTH THE PROFESSION AND
COMMERCIAL MANAGEMENT
IRIS (iXBRL compliant) and Sage software
PROPERTY MANAGEMENT SERVICES**

KINGSBRIDGE EYE CARE GROUP

Nigel Frost Optometrist

3, Chene Court, Modbury

01548 830944

Clinical Excellence

Full Eye Health Examinations
Contact Lens Specialist
Eye Examination Packages
OCT screening packages
Diabetic and Glaucoma Examinations
Retinal Photography
Luxury Designer Brands

Kingsbridge Eye Care
1, The Promenade
Kingsbridge
01548 856854

Salcombe Eye Care
84, Fore Street
Salcombe
01548 843207

www.kingsbridgeeyecare.co.uk



Tel- 01364 72418 Mobile- 07710453118
www.srplumbingheating.co.uk

- LPG & Natural Gas
- Oil
- Plumbing
- Heating
- Boiler Service and Repair
- Bathroom Installations
- Underfloor Heating
- Domestic Electrical Installer
- All Work Guaranteed
- Modbury Based Engineer



LOCAL DOMESTIC ELECTRICIAN

- ✓ Installations, Cookers, showers, fans, inside and outside lights
- ✓ Alterations / additions / sockets / rewiring / Earth bonding
- ✓ Consumer Units – no better price fitted
- ✓ No job too large or too small
- ✓ Honest and reliable service
- ✓ PAT (portable appliance testing) inc certificate

All work guaranteed/ certificated
Fully insured / qualified & registered with NICEIC

- Call **Phil** for a free, no obligation quote or callout;


Tel: 01548 859041

Mob: 07769 840012

email: lightworkselectrics@gmail.com

Local Adverts

solereflexions
for mind, body & spirit




I am an Ingham Qualified, Fully Insured Reflexologist who can offer treatments at either my rural treatment room just outside **Modbury**, within the comfort of your own home and now also available at **Fifth Sense** in Modbury.

So why not call me today to see how reflexology may help you.

Gift Vouchers available Gift Vouchers available

Bridget Thomas, **MAR IIR**
Tel: Modbury 01548 831629
Mob: 07973 506083



Frenchy's Beauty

Your Local Mobile Beauty
Therapist & Nail Technician in
the Modbury area

Contact Victoria on:
07432 643900
www.frenchysbeauty.co.uk

OFFERING SALON TREATMENTS
IN THE COMFORT OF YOUR
OWN HOME

...relax & feel pampered

**MODBURY MAY FAIR
ROAD CLOSURES
ROAD TRAFFIC
REGULATION ACT 1984
SECTION 16A
THE COUNTY OF DEVON
TEMPORARY PROHIBITION
OF THROUGH TRAFFIC**

NOTICE is hereby given that Devon County Council has made the above titled order. No person shall cause or permit any vehicle to proceed on the sections of Affected Roads except for access to land or premises on or adjacent to those length of roads.

Monday 4th May

May Fair Opening Ceremony
Poundwell Short Stay car park closed from 0800 - 1400
1415-1430 & 1440-1455
Town Centre (Palm Cross Green - Galpin St), Brownston Street, Dark Lane,
Barracks Lane closed to all traffic - Modbury Mile Road Races

**Saturday 9th May
1500 - 1700***

Town Centre (Palm Cross Green - Galpin St) 1600-1630
Brownston Street, 1600 - 1700
Dark Lane, Barracks Lane 1600-1610 / 1630 - 1700
Carnival Parade
*Barracks Lane closed between Palm Cross Green and Long Park from 1500

**Friday 8th May 1800 -
Saturday 9th May 1300**

Poundwell Short Stay Car Park closed for May Fair Market. Access to Poundwell from 0700 on Saturday via Church Lane & Bunker Hill only

*Materia Aromatica
&
Fifth Sense*

Offer a large range of

- Organic skin care, essential oils, soaps & accessories
- Fair-trade gifts, homeware & toys
- Local crafts, British-made & eclectic items
- Exclusive summer wear & jewellery

The Modbury Therapy Centre,
for a relaxing experience

Beauty, breathwork, counselling,
hypnotherapy, massage, reflexology, reiki ...

Book or walk in on the spur of the moment

01548 831671 or 07757 165828
5 Church Street, Modbury PL21 0QW

HARDY PRINT

DO YOU HAVE A NEED FOR
**HIGH QUALITY
LOW COST PRINTING ?
THEN WE CAN HELP YOU**

FLYERS, POSTERS, BROCHURES, BOOKLETS
& MUCH MORE

HIGHLY COMPETITIVE COSTS,
AMAZING TURNAROUND !
DESIGN SERVICE AVAILABLE

WE CAN ALSO OFFER, WEBSITE DEVELOPMENT,
MAILING SERVICES, MARKETING CONSULTANCY,
SEARCH ENGINE OPTIMISATION
AND PUBLISHING SERVICES.

LET US KNOW WHAT YOU WANT TO DO

CONTACT JON HARDY
07801 238859
OR
jon.hardy@btconnect.com

LOCATED IN IVYBRIDGE
FOR A VERY PERSONAL SERVICE

AQUA
HAIR DESIGN
Modbury
Unisex Experienced Stylists

7, Modbury Court
Church Street
01548 831260

Modbury Physio

Sue May, a local physiotherapist with many years' experience now offering private physiotherapy

Based at Modbury Osteopathic Clinic Monday (Coppers Corner - The old police house on the Plymouth Road)
Monday pm and Thursday am

If you would like to make an appointment or discuss if physiotherapy is for you, please contact us on:

07980 922273 or modburyphysio@yahoo.com

Modbury Societies

Save the Date

Saturday 13th June, 7.30pm,

Modbury Memorial Hall

Think Pink Hampers and Champers Evening

in aid of the Primrose Breast Cancer

Look out for posters and tickets next month

For more info tel- Jackie 07748999700

or Rebecca - 07770740605

rebeccapepperell91@gmail.com

Ivybridge Food Bank

The Ivybridge Food Bank continues to be very grateful for all the contributions left in the boxes at Petty Cache and in the Church.

In order to help them to 'balance' the bags they make up they would, especially, like some 'pudding' supplies (eg canned fruit, rice pudding and sponge puddings.) Many thanks to all who contribute.



SOUTH HAMS MOBILE LIBRARY



Saturday 9th May

Poundwell Square 09:30 to 12:30

Tuesday May 19

Ayleston Park 14:45 to 15:30

Poundwell Square 15:35 to 16:35

Modbury Silver Threads Over 60s Group

Tuesday 5th May and Tuesday 19th May

1:45pm to 4:00pm, Modbury Social Club

All old and new members welcome

All enquiries to Zena 830923 Liz 830313

walk&talk

**3rd May - Special May Fair
Walk - Please Meet at
Poundwell Car Park at 1.30pm**

New walk dates:-

12th May and 26th May

9th June and 23rd June

14th July and 28th July

Contact Modbury Volunteer walk leaders

Sue Rogers (831289), Sandra Sidey
(830582), Jenny Pannell (83006)

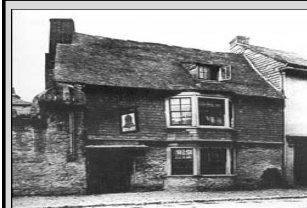
Andy Sloper - Walking for Health
Lead for Active Devon on 01392
263674



**South Hams
District Council**



Supporting you to
get active and stay active



Modbury Local History Society

The last talk in our current series took place on 8th April and was given by Mr Gordon Waterhouse whose subject was a famous local naturalist George Montagu, 1753-1815. He made a number of interesting discoveries which Gordon explained in great detail with the aid of many coloured illustrations. George Montagu lived in Kingsbridge at the top of Fore Street. Our Chairman, Mary Timmis, thanked Gordon for giving us such an interesting lecture. We are already booking Speakers for our next programme which will begin in September. If anyone would like to volunteer to talk on any interesting subject please contact the Chairman or Secretary. **A NOTE FOR YOUR DIARY – THE SUMMER OUTING THIS YEAR WILL TAKE PLACE ON 1st JULY – DESTINATION MORWELLHAM** near Tavistock. We have already booked a coach and a booking form will be on display in the Modbury P.O. Departure time 9.30am Cost £22.00 which will include coach, entry and a ride on the Mine Train. Everyone welcome! If you require any further information please ring me-830446, **David Mitchell**

The next meeting will take place on 1st JUNE, in the Modbury Club, commencing at 7.30pm. We shall be including a video film and look forward to welcoming new members, you do not have to be ex-service. Also any visiting RBL members are welcome. Look out for our stand at the MODBURY FAIR MARKET where we shall be holding a raffle in aid of the POPPY APPEAL. Prizes welcome.
David Mitchell.



**The Royal
British Legion
Modbury
Branch**



The Breakfast Club & Business Chamber



Taken from Little Modbury looking Northwest towards Dartmoor, Francis John has really captured the green and pleasant countryside around Modbury.

When one thinks of May one always thinks of butterflies and this is what Jennifer Johnson painted for the month of May in the Modbury Calendar. The detail is superb and the colours dynamic - you feel the butterflies could fly off the page!

Ken Watson - An Irishman in Modbury!

Whilst other people were chasing Easter bunnies, I captured Ken in a corner of his sunny allotment to find out about his new business enterprise.

Originally from Northern Ireland, Ken left at the age of 18 to go to University in Lancaster. Having travelled and worked in many countries, he eventually settled in Luxembourg, where he met his wife Lizi. It wasn't long before they started a family and now have three children, all at University.

What did you do in Luxembourg?

Despite studying ecology, I took a computer programming course and soon found myself working in the financial software industry in Paris. I stayed in the business for around 25 years working all over Europe, Asia and North America. After a while, the family moved to a permanent base in Modbury but I missed them so much, I had to think of a business venture to allow me to join them. It was a huge life change for all of us!



So what exactly are your two businesses?

Well...as Modbury Home Maintenance I offer roof insulating, painting and decorating, repairs and of course, gardening. I love gardening and being out in the open, and with my ecological background I'm a plant enthusiast and have green fingers! I can mow, weed, trim and cut - anything except hair! I also have Devon Business Systems where I implement Business Management Systems for companies on a project basis. With my knowledge of computers I can also help sort out any domestic computer problems, install your new computer and help set up home audio visual systems.

What do like to do in your spare time?

I love nature. I am also a keen photographer and love to take photographs whilst walking my two dogs.

Tell us something we may not know about you.

I like to collect and sample fine wines, "et je parle Francais!"



NEST DESIGN

ARCHITECTURAL DESIGN & SERVICES

Contact Jon & Emily Sullivan

- Planning Applications
- Building Regulations
- On Site Supervision

28 Galpin Street, Modbury
www.nestdesignstudio.co.uk
01548 830409

A fishy night at The Oyster Shack - with Chris Yandell

On 24th February a group of around 30 members of the Modbury and District Business Chamber gathered at the Oyster Shack in the early evening. Owner Chris Yandell and his welcoming team met us with Rocktails, a new frozen fresh fruit cocktail due to launch on the drinks market soon. Look out for sample tasters at the Modbury Barrow Market during the summer.

After some time spent networking over rocktails, we sat down to hear the story of the Oyster Shack.

Chris took us on a verbal journey, from the early days of taking over the Oyster Shack in a wooden hut, to the successful enterprise that it is today. Having embarked on the restaurant business at an early age, just out of university, it's not surprising that Chris has been inventive, energetic and sometimes over enthusiastic with his ideas!

The gathering appreciated the candour with which Chris discussed his business successes and trials and tribulations. His biggest bit of advice, was to keep your feet on the ground

and concentrate on the jewel in your crown/best part of the business. In his case The Oyster Shack. The huge benefit to all the restaurant guests today, is that his entrepreneurial ideas have ensured the Oyster Shack remains a unique owner run restaurant offering a colourful, delicious and quirky eating experience.

The restaurant is a valuable employer of local kitchen and front of house staff. And not to forget a great venue for an excellent and superbly fishy three course dinner.



The Modbury Barrow Market 2015

A guest appearance of the Barrow Market will happen at the Modbury May Fair on Saturday 9th May.

If you are interested in bringing your wheelbarrow full of delights to this event, please email trish.berry@gmail.com to reserve your place. All proceeds from this day will go straight to the May Fair fund.

The main Barrow Market will open for the summer from June to September 9.30 to 12.30 pm. A website is in progress and once completed, you'll be able to find information on booking a barrow. If you're a visitor to the South Hams, a shopper or a local Modbury resident, you'll be able to find out the latest news and information.

Keep an eye on: www.barrowmarket.co.uk

Breakfast Club - join us every Thursday morning from 8.15 a.m at the Lazy Cow for coffee, advice and ideas!

Business networking evening. A few faces spotted at a recent business networking evening in Modbury



Join our 600+ followers. Search **Modbury News** on Facebook

Modbury May Fair

MODBURY PRE-SCHOOL FAIR EVENTS

Modbury Preschool will be taking part in this year's carnival, we will have a float, so do look out for us!

In the morning we will be running a cake stall at the market. So do come and see us and eat cake!

If you would like to donate a cake for us to sell on our stall it would be very much appreciated! Either pop it into the preschool on the Friday or you can give it to us on actual market day. Massive thanks as always!

All proceeds raised from the cake stall will go towards Modbury Preschool.

Registered Charity Number - 1039616
OFSTED Registration Number - EY334684

Nicolle McKenzie, Committee Member

IT'S FOR YOU – WHY NOT USE IT? MARS SPORTS AND COMMUNITY FACILITY

We now have a fully equipped community facility on the Recreation Ground – including a large multi-purpose Events Room for up to 60 people, catering facilities, sport changing rooms and showers, disabled facilities and access, plus extensive free parking.

- Extremely competitive hire rates
- Ideal for children's parties and private social events
- Choir/band practice
- Training and meeting events
- Keep Fit, Yoga, Pilates classes
- Art classes etc.

Check availability/rates, book online or contact us at:

www.marsport.org

Modbury Fair: Pop-Up Art Show

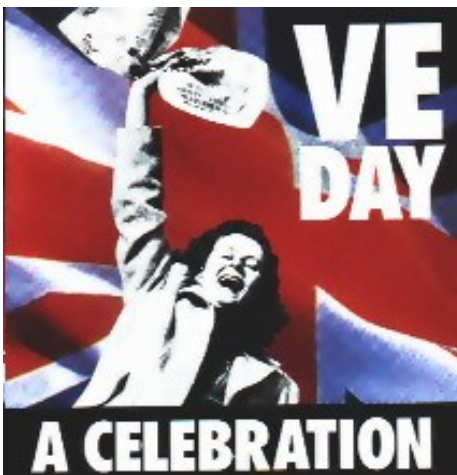
Following the successful shows at the May Fair and Christmas Lights last year, ten Modbury artists are once again exhibiting at a 'Pop-Up Art Show' in the Assembly Rooms in the White Hart on the morning of the Modbury Fair Market, May 9th, 10.00 – 12.30. Come and see what an exciting variety of artistic talent there is in Modbury.

May Fair Market St George's Church Stall Saturday May 9th

We will be having a stall as usual at the May Fair Market and would greatly appreciate plants, cakes, preserves, pies etc. With your help we can have a really successful morning. Please bring your contribution to the Market stall on the Saturday morning or phone Rachel and Richard 830021 beforehand for collection.

Also if you could help out on the stall for a while we would be very grateful. Thank you.

Richard & Rachel Taylor



Step Back in Time

Why not pack up your troubles and join a proper VE style knees up on May 9th? You can join the street party at the Memorial Hall to celebrate the 70th anniversary of the end of World War II.

You can don your best demob gear and even get your hair done by Nicholas Hairdressers who are offering the chance to get an authentic post-war hairstyle for just £5, although places are limited.

There will be live music featuring many wartime favourites, a host of comedy sketches and a special 1940s themed meal. There will also be a prize for the best outfit. Tickets are available from Pickles at £6 each or £8 on the door.

ST LUKE'S HOSPICE

RACE NIGHT

Many thanks to all the generous people of Modbury who came to the Race Night and made it such a lively event. Thanks also to the committee, the barmaids, the men on the tote, David Hourahane as MC and particularly to Mike Tillett without whom we would have had no screen, projector or subtle lighting.

We are proud to say that we raised £1810 for the Hospice, so well done to all.

Joan Ellis

Local News and Events

The Green Corner



THE UNIVERSITY OF THE THIRD AGE

IVYBRIDGE U3A

The May General Meeting of Ivybridge U3A will be held in the Watermark on Monday 18th May at 2 pm. The Speaker will be Diana Lawer on "The Great Cornish Pasty".

Two performances of the Spring Charity Concert will take place on Saturday 16th May in the Methodist Church Ivybridge at 2.30 and 7.00pm. Taking part will be The U3A Choir and the Mayflower Quartets and Chorus. These concerts are in aid of St Luke's Hospice, and tickets priced at £6.50 and £3.00 (under 14) will be on sale from the Watermark from Friday 17th April.

KINGSBRIDGE U3A

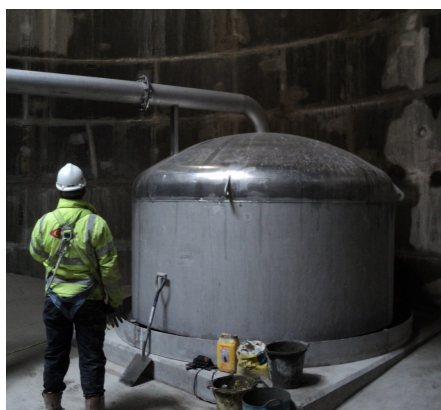
AGM followed by Guest Speaker, Ian Varndell (Chairman): "**Devon Gardens Trust**". Conservation lies at the heart of the Devon Gardens Trust. They research and record the origins of Devon's historic gardens and parks through the generations in order to give advice and support to garden owners and public authorities today. The Trust's mission is to preserve and enhance.

Membership Sec: Judy Tyler
judyat Tyler@icloud.com

Royal British Legion VE Celebrations

The Modbury Branch has prepared an exhibition to commemorate the VE Day celebrations. It will be displayed at Modbury Fair, and it is hoped also within the Church and at the Devon Rural Archives. If any Parishioners have any photographs or documents relating to VE Day Celebrations in Modbury, we would like to arrange to copy them for the Modbury History Society Archive.

Roy Sims 01548 830530



What is it?

Could it be a small nuclear reactor, giant kettle or something out of a brewery? No - none of these - in fact it's a bit of equipment at the bottom of the giant hole that South West Water have been digging in Poundwell Meadow car park as part of the sewage improvement scheme to make water quality on our beaches better.

The work has taken longer than planned as the rock which had to be excavated was a lot harder than expected. The tank will be used to store excess storm water (a mixture of waste water from properties and surface water run-off from roads and roofs). When levels in the sewers return to normal, pumps will return the storm water to the network for treatment at Modbury Sewage Treatment Works.

The main tank has now been covered and when another smaller holding tank is completed, the car park and neighbouring field will be restored to its original state, probably by mid-May.

South West Water apologises for the delay and thank Modbury residents for their patience. With the new system up and running, having a dip in the sea this summer at Wonwell will be even greener.

Jeff Booth

Birth Announcement



PHILIP AND CORINNA EVERETT-LYONS
PROUDLY ANNOUNCE THE BIRTH OF

Henrietta Georgia Everett-Lyons

BORN ON THE 4TH MARCH 2015

WEIGHING EIGHT POUNDS, EIGHT OUNCES

MODBURY ARTISTS

POP-UP ART SHOW

SATURDAY 9TH MAY
10 - 12.30 UPSTAIRS IN
THE WHITE HART
ASSEMBLY ROOMS

Summer Timetable Now Available Online

We have a fantastic, fun timetable of free events for families with children up to the age of 5 years

For full details please visit:
www.southhamschildrenscentres.org.uk



SeaMoor

Like Us On
facebook **f**



A Sure Start Children's Centre

in partnership with
Devon
County Council

Town Hall, Erme Court, Leonards Rd
Ivybridge, PL21 0SZ 01752 896356

Local Adverts

G H W Rosevear & Co

Chartered Secretaries and
Incorporated Financial Accountants

We specialise in the following services:

Accountancy and Taxation
Probate and Inheritance Tax (IHT)
Company Secretarial Services
Legal Support Services
Property Management

We can also provide you with Book-keeping,
Payroll Services and VAT Returns

Office Hours

G H W Rosevear & Co
3, Modbury Court, 32 Church Street
Modbury, Ivybridge, Devon, PL21 0QR

9¹⁵ a.m. - 6 p.m.
Monday - Friday
Weekends by appointment

Tel: 01548 831427
Fax: 01548 830977
Email: george@holbrookass.com
www.accountantsouthdevon.co.uk

BISTRO 35

35. Church Street. Modbury

Art Room at the Bistro
Tutored Life Drawing Classes
starting in April
Tuesdays 10:30am to 1pm
Twice a month
Booking Essential

Phone: 01548 831273

Opening Times
Mondays—closed
Tuesday to Friday 6pm-11pm
Saturday 6pm-Midnight
Sunday 4pm-11pm



MARTIN LEY
PLUMBING & HEATING

- Oil Installations,
Servicing & Repairs
- Unvented Cylinders
- Bathrooms & Showers
- General Plumbing

Tel: Modbury 01548 830609
Mobile: 07811 934551

Rest Assured Laundry

New Mills Business Park, Modbury

Collection & Delivery Service Available

Duvets : Bed Linen : Table Linen : Pillows
: Blankets : Towels : Curtains

01548 831488 / 07722294060

www.restassuredproperties.co.uk



MR BUILDER CO.

A friendly, honest
and reliable service, covering all
aspects of the building trade.
Fully insured and guaranteed.

Transforming any part of your home,
'from foundation to decoration'

Office: 01548 831303 (Modbury)
Mr Builder James: 07825 214368
Mr Builder Paul: 07974 508947

jamesandpaul@mrbuilderco.com

MICHAEL HAGGER

Professional Interior
& Exterior Painter
& Decorator.

Friendly and reliable, trained to City &
Guilds advanced craft level with
32years experience.



Lankwells Farm
Burraton
Ermington

Tel: 01752881438.
Or 07977445521.

Free
Estimates & References.

HULU



See & try
our range
of sewing
machines

Yarn • Fabrics • Sewing Machines

Open Mon-Fri 9am - 5pm
Sentinel House, Poundwell, Modbury
Call us on 01548 831911

Modbury Tiddlers

A community run group for
children aged 0-5 (and for the
people who wipe their noses!)

Playtime for them
Coffee and chat for us!



Fridays 9.30 - 12 noon
Modbury Memorial Hall
£1.50 per child

Enquiries ring Nicky on 559172
or Julia on 830963

MODBURY BADMINTON CLUB

Memorial Hall

Tuesdays

7.30 - 10 pm

(September to May)

New members always welcome

For further information please
contact:

Gill Jolly

Tel: 01548 831263

Local Information & Adverts

SOUTH HAMS SOCIETY



Why not join members of the South Hams Society for a **beach clean**, at **West Charleton**, on **Saturday 2 May**? You will be made very welcome. **Meet in Marsh Lane at 11 am** for the ten minute walk to this lovely isolated patch. There is a bird hide nearby so best not to bring dogs but you could bring a picnic. We will leave rubbish by the stile for Salcombe Harbour to collect when the tide is right. **LW 11.54 BST**

More beach cleans are scheduled for 2015: South Milton (13 June, 10 October), Soar Mill (4 July, 12 September), Gara (1 August, 12 December), Yarmer/Lease Foot (29 August) and West Charleton (14 November),

For more information, please contact Vivien Napper, t: 01548 842405 e: viv@rathlyn.eclipse.co.uk or visit the South Hams Society website at <http://www.southhamssociety.org>



Traditional Butcher, Farm Shop & Cafe

You will be surprised just what we do!

Providing local produce. Beef, Pork, Lamb & Poultry for the retail & catering trade.
Delicatessen, Fresh Fruit & Veg, Vintage Style Café

**Free Local
Delivery available**

Rake Farm, Loddiswell & 6 Church Street, Modbury

Loddiswell: 01548 550413 | Café: 01548 559126 / Modbury: 01548 830240

www.aunevalleymeat.co.uk

Marchand Petit

ESTATE AGENTS
www.marchandpetit.co.uk



Specialists in coastal and country houses holiday cottages
and apartments. For any property related help and advice

Please contact us on
01548 831163

email: modbury@marchandpetit.co.uk

Dartmouth | **Kingsbridge** | **Modbury** | **Newton Ferrers** | **Salcombe** | **Totnes** | **London**
01803 839190 | 01548 857588 | 01548 831163 | 01752 873311 | 01548 844473 | 01803 847979 | 0870 1127099

Local Adverts & Information

DEVON RURAL ARCHIVE

Shilstone, Modbury, PL21 0TW 01548 830832



Picture Perfect:

Yesteryear in local towns and villages.

This special photographic exhibition, commissioned by the Devon Rural Archive, showcases the buildings and landscapes of local towns and villages. The images have been chosen from the tens of thousands of pictures, from all over Devon, that are stored in our Image Bank.

If you have any old photographs of Modbury that you would like to add to our Image Bank please bring them in so we may scan them and return the original to you.

Open Monday*, Tuesday and Thursday (*excluding Bank Holidays) from March to October. Free entry.

CAN MODBURY LADIES HELP

My ladies group from church have a great project you may like to support! **Sanctuary House, Plymouth** provides emergency care for abused women who often arrive on the doorstep with nothing but their children.

To show that someone cares about them, we ladies are making emergency bags and want to fill them with, essential toiletries tooth paste/brushes, combs and hair brushes, soap, shampoo, bath salts, flannels and all those sort of things: plus all kinds of nice girl-stuff like new cosmetics.

This worthwhile project offers Modbury ladies the chance to empty that cupboard of the new and never to be used talc, perfumes, creams etc. and recycle them to a woman in need.

If you have something to donate please let us know.

Claire Williams 830355

Modbury Pre-School, Barracks Road

Open 9am-3.30pm Mon-Fri, during term time. For children 2 - 4 years. Toddler sessions on a Thursday afternoon 1-3.30pm. Please contact us for more information or to discuss your needs. The preschool also operates a breakfast, afterschool and holiday club for 3-11 year olds.

www.modbury-preschool.org modburypreschool@hotmail.co.uk 01548 831477



CAKE AND COFFEE FOR HANNAH'S



Celebrate the end of April showers and embrace Spring with coffee and cake in Yealmpton. It is the perfect way to start the week and to help raise money for the Dame Hannah Rogers Trust.

The Hannah's team would like to invite everyone to a charity coffee morning in the Community Room, Yealmpton Community Association, on Monday 11 May from 10.30am-12.30pm. Friends and family are all welcome.

Hannahs is a local charity that aims to empower, advocate and enrich the lives of those with a range of disabilities.

For more information, please contact Imogen Middleton on 01626 325838 or imogen.middleton@discoverhannahs.org



Robyn Dylan (ARPS) Professional and Experienced Photographer specialising in Natural Photography.

- * Weddings
- * Civil Partnerships
- * Informal portraiture
- * Celebrations
- * Pet/Animal Portraits.

Business and Corporate enquiries welcome.

Giclee prints and canvasses of this beautiful area (and beyond) available to purchase.

For more information, please visit:

www.robzydylan.co.uk

Tel: 01548 811 112

Email: robyn.dylan@btinternet.com

Follow me on facebook: Robyn Dylan Photography.

Local Adverts



Pauline Young
Hairdressing Modbury
The salon experience at mobile prices

25% DISCOUNT FOR ALL NEW CLIENTS

Tel: 07796 184301 www.gchqhair.com
4 Galpin Street, Modbury, PL21 0QA



RLS **WILLS & PROBATE**
LASTING POWERS OF ATTORNEY
PRE-PAID FUNERAL PLANS
FREE Home call services for OVER 60's

Over 60's Specialists

HOME PROTECTION TRUSTS
David Says: *A Home Protection Trust gives all the following advantages:*

- Immediate protection for your home from all unforeseen eventualities
- Saves Probate costs which can be substantial
- Saves waiting months for probate to deal with your property
- Makes things simpler for your beneficiaries after your death

Telephone for a **Free Home Protection information leaflet**

* Richardsons Legal Services are a friendly local firm, fully insured, qualified, regulated, and give FREE consultations. *

RLS RICHARDSONS LEGAL SERVICES
PROTECTING YOUR ASSETS

TEL: 0800 014 8031
Free from any BT line | www.rls-uk.com

CAUTION WITH CONFIDENCE
Plymouth City Council Trading Standards Approved



Exceptional journeys across Africa
Africa House Modbury PL21 0QJ Tel 01548 830059
www.zambezi.com

ZAMBEZI SAFARI & TRAVEL COMPANY

Local Adverts



After the Catch - Anthony Amos

ANTHONY AMOS

of land and sea

8 - 23 May

the**brownstongallery**

36 Church Street, Modbury, Devon PL21 0QR tel - 01548 831338

www.thebrownstongallery.co.uk

BIGBURY GOLF CLUB



MEMBERSHIP OPTIONS TO SUIT ALL LIFESTYLES
 FULL MEMBERSHIP STARTS AT UNDER £5 PER WEEK
 PLEASE CALL IN ADVANCE AND BRING THIS
 ADVERT TO CLAIM A **FREE** ROUND OF
 GOLF FOR TWO AND MEET OUR TEAM



Telephone: 01548 810557 | www.bigburygolfclub.co.uk

- GREAT VALUE DELICIOUS SUNDAY LUNCHES
- SOCIAL MEMBERSHIP - ONLY £35 PA



Fresh Local Seafood

Steak & Lobster £16

Seared steak, Salcombe lobster tail, skinny fries,
 grilled tomato & garlic butter £16
 Monday - Friday 12-9pm.

Afternoon Tea

New to The Oyster Shack we'll be serving
 afternoon tea! Indulge in a selection of the most
 delicious homemade cakes, sandwiches and teas for
 you to enjoy, weekdays between 3 & 6pm.

Shack Set Menu

1 Course £10 | 2 for £12 | 3 for £14
 A set menu of scrumptious local seafood 7 daily.

**All offers run until Friday 22nd May and
 exclude Monday 4th May.**

01548 810876 | Bigbury TQ7 4BE
www.oystershack.co.uk | bigbury@oystershack.co.uk

